

AECOM

PROJECT

Former MTL Site - Pop-Up Studio

CLIENT

Morgan Sindall

CONSULTANT

AECOM
Mid Point, Alencon Link,
Basingstoke, Hants,
RG21 7PP
Tel +44 (0) 1256 310 200
www.aecom.com

GENERAL NOTES

1. TREE CATEGORIES AS DEFINED BY BS 5837:2012
2. TREE LOCATIONS ARE BASED ON THE TOPOGRAPHICAL SURVEY AND GPS CO-ORDINATES FROM ON SITE WALKOVER.
3. * INDICATES A TREE / GROUP WHOSE POSITION IS APPROXIMATE AS BASED UPON AERIAL PHOTOGRAPHY AND ON SITE OBSERVATIONS.
4. PLANS SHOULD BE READ IN CONJUNCTION WITH THE AECOM ARBORCULTURAL REPORT.
5. THE ORIGINAL OF THIS DRAWING WAS PRODUCED IN COLOUR - A MONOCHROME COPY SHOULD NOT BE RELIED UPON.
6. DRAWING REFERENCES:
"OS_MasterMap_623242_823159_OS_Mastermap.dwg"

KEY PLAN



KEY

SITE BOUNDARY

EXISTING TREE, GROUP, HEDGE, OR WOODLAND TO BE RETAINED

EXISTING TREE, GROUP, HEDGE, OR WOODLAND TO BE REMOVED OR PRUNED

ROOT PROTECTION AREAS (RPA) OF RETAINED TREES
(AS DEFINED BY BS 5837:2012)

TREE PROTECTION FENCING

CONSTRUCTION EXCLUSION ZONE
(TRAFFICKING OF PLANT, MATERIALS STORAGE, EXCAVATION AND ALL OTHER CONSTRUCTION ACTIVITIES ARE EXCLUDED WITHIN THESE AREAS FOR THE PURPOSES OF PROTECTING TREE HEALTH)

CONSTRUCTION WORKING ZONE
(MANAGED CONSTRUCTION PROCESSES PERMITTED IN ACCORDANCE WITH THE PRINCIPLES SET OUT WITHIN THE ARBORCULTURAL IMPACT ASSESSMENT)

PROPOSED DEVELOPMENT LAYOUT
(BASED UPON DRAWING REFERENCE:
"031600-0BS-XX-XX-DR-4-1202_Proposed Site Plan_S0P01")

ISSUE/REVISION

I/R	DATE	DESCRIPTION
A	31-07-2020	First Issue

DRAWING STATUS

ISSUE

PROJECT NUMBER

60539643

SHEET TITLE

TREE PROTECTION PLAN
SHEET: 000

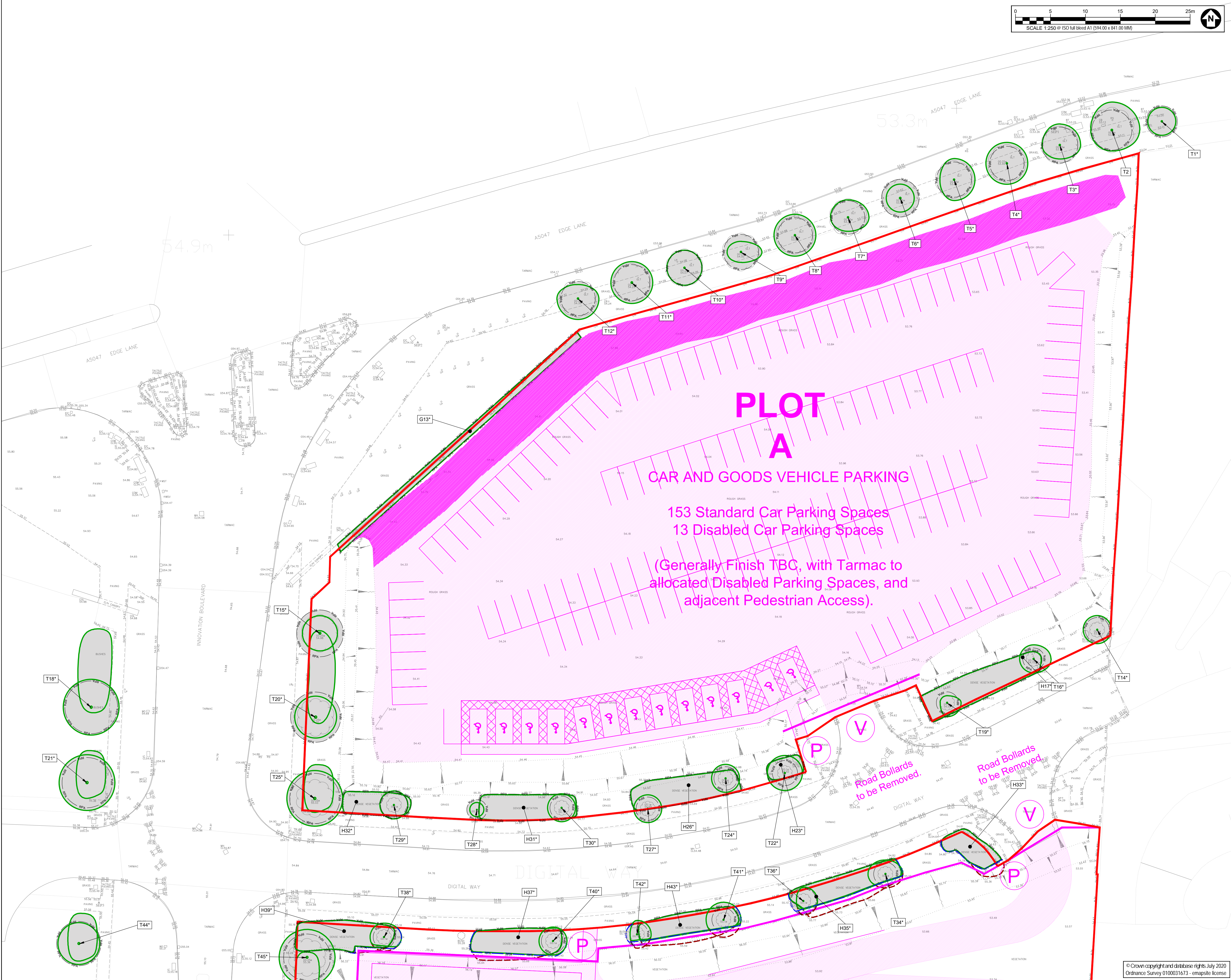
SHEET NUMBER

60539643-ACM-XX-XX-DR-AB-TPP000

REV.

A

This drawing has been prepared for the use of AECOM's client. It may not be used, modified, reproduced or relied upon by third parties, except as agreed by AECOM or as required by law. AECOM accepts no responsibility, and denies any liability whatsoever, to any party that uses or relies on this drawing without AECOM's express written consent. Do not scale this document. All measurements must be obtained from the stated dimensions.



PROJECT
Former MTL Site - Pop-Up Studio

CLIENT
Morgan Sindall

CONSULTANT

AECOM
Mid Point, Alencon Link,
Basingstoke, Hants,
RG21 7PP
Tel +44 (0) 1256 310 200
www.aecom.com

GENERAL NOTES

1. TREE CATEGORIES AS DEFINED BY BS 5837:2012
2. TREE LOCATIONS ARE BASED ON THE TOPOGRAPHICAL SURVEY AND GPS CO-ORDINATES FROM ON SITE WALKOVER
3. * INDICATES A TREE / GROUP WHOSE POSITION IS APPROXIMATE AS BASED UPON AERIAL PHOTOGRAPHY AND ON SITE OBSERVATIONS
4. PLANS SHOULD BE READ IN CONJUNCTION WITH THE AECOM ARBORICULTURAL REPORT
5. THE ORIGINAL OF THIS DRAWING WAS PRODUCED IN COLOUR - A MONOCHROME COPY SHOULD NOT BE RELIED UPON.
6. DRAWING REFERENCES:
OS_MasterMap_623242_823159_OS_Mastermap.dwg

KEY PLAN



KEY

- SITE BOUNDARY
- EXISTING TREE, GROUP, HEDGE, OR WOODLAND TO BE RETAINED
- EXISTING TREE, GROUP, HEDGE, OR WOODLAND TO BE REMOVED OR PRUNED
- ROOT PROTECTION AREAS (RPA) OF RETAINED TREES (AS DEFINED BY BS 5837:2012)
- TREE PROTECTION FENCING
- CONSTRUCTION EXCLUSION ZONE (TRUNKING OF PLANT, MATERIALS STORAGE, EXCAVATION AND ALL OTHER CONSTRUCTION ACTIVITIES ARE EXCLUDED WITHIN THESE AREAS FOR THE PURPOSES OF PROTECTING TREE HEALTH)
- CONSTRUCTION WORKING ZONE (MANAGED CONSTRUCTION PROCESSES PERMITTED IN ACCORDANCE WITH THE PRINCIPLES SET OUT WITHIN THE ARBORICULTURAL IMPACT ASSESSMENT)
- PROPOSED DEVELOPMENT LAYOUT (BASED UPON DRAWING REFERENCE: 151600/005-XX-XX-DR-4-1202_Proposed Site Plan_S0P01)

ISSUE/REVISION

A	31-07-2020	First Issue
I/R	DATE	DESCRIPTION

DRAWING STATUS

ISSUE

PROJECT NUMBER

60539643

SHEET TITLE

TREE PROTECTION PLAN
SHEET: 001

SHEET NUMBER

60539643-ACM-XX-XX-DR-AB-TPP001

REV.

A