

Tree ID	Species	Estimated Height (m)	Stem Diameter (mm)	Canopy Spread (N)	Canopy Spread (S)	Canopy Spread (E)	Canopy Spread (W)	First Significant Branch (m)	Canopy Clearance (m)	Physiological Condition	Life Stage	Structural Condition	Condition Comments	Preliminary Management Comments	Works to Facilitate the Proposed Development	Estimated Remaining Contribution	Category
													adjacent o footway. - High contribution and future potential. - Established on edge of low-lying shrub mass, of ornamental plants, such as box. - Normal crown form and leaf density.				
T21*	Austrian Pine ( <i>Pinus nigra</i> )	111	300	4	4	4	4	2.0/SE	1	Good	EM	Good	- Forms part of single line avenue adjacent o footway. - High contribution and future potential. - Established within low lying shrub mass, of ornamental plants, such as box. - Normal crown form and leaf density.			20+	B2
T22*	Dawn Redwood ( <i>Metasequoia glyptostroboides</i> )	6	150#	2.5	2.5	2.5	2.5	2.0/W	2	Good	SM	Good	- No access to base. - Forms part of single line avenue adjacent to footway. - High contribution and future potential. - Established within dense shrub bed and bamboo hedge, formally managed. - Likely easily replaceable. Consider transplanting tree if required.			10+	C1,2
H23*	Bamboo ( <i>Bambusoideae sp.</i> )	1.5	50	1	1	1	1	n/a	n/a	Good - Fair	SM	Good - Fair	- Bamboo hedge.			10+	C2
T24*	Dawn Redwood ( <i>Metasequoia glyptostroboides</i> )	5	140#	2	2	2	2	2.0/SE	2	Fair	SM	Good	- No access to base. - Forms part of single line avenue			10+	C1,2

Tree ID	Species	Estimated Height (m)	Stem Diameter (mm)	Canopy Spread (N)	Canopy Spread (S)	Canopy Spread (E)	Canopy Spread (W)	First Significant Branch (m)	Canopy Clearance (m)	Physiological Condition	Life Stage	Structural Condition	Condition Comments	Preliminary Management Comments	Works to Facilitate the Proposed Development	Estimated Remaining Contribution	Category
													adjacent to footway. - High contribution and future potential. - Established within dense shrub bed and bamboo hedge, formally managed. - Likely easily replaceable. Consider transplanting tree if required. - Minor crown dieback to the northeast of small diameter limbs. - Leaf scorch. Likely from drought stress induced by dense understory planting.				
T25*	Austrian Pine ( <i>Pinus nigra</i> )	10	300	4	4	4	4	2.0/NE	0.5	Good	EM	Good	- Forms part of single line avenue adjacent o footway. - High contribution and future potential. - Established within low lying shrub mass, of ornamental plants, such as box. - Normal crown form and leaf density.			20+	B2
H26*	Bamboo ( <i>Bambusoideae sp.</i> )	1.5	50	1	1	1	1	n/a	n/a	Good - Fair	SM	Good - Fair	- Bamboo hedge.			10+	C2
T27*	Dawn Redwood ( <i>Metasequoia glyptostroboides</i> )	6	140#	2	2	2	2	2.0/NW	2	Good	SM	Good	- No access to base. - Forms part of single line avenue adjacent o footway. - High contribution and future potential. - Established within dense shrub bed and bamboo			10+	C1,2

Tree ID	Species	Estimated Height (m)	Stem Diameter (mm)	Canopy Spread (N)	Canopy Spread (S)	Canopy Spread (E)	Canopy Spread (W)	First Significant Branch (m)	Canopy Clearance (m)	Physiological Condition	Life Stage	Structural Condition	Condition Comments	Preliminary Management Comments	Works to Facilitate the Proposed Development	Estimated Remaining Contribution	Category
													hedge, formally managed. - Likely easily replaceable. Consider transplanting tree if required. - Leaf scorch visible.				
T28*	Dawn Redwood ( <i>Metasequoia glyptostroboides</i> )	6	120#	1	1	1	1	2.0/S	2	Good	SM	Good	- No access to base. - Forms part of single line avenue adjacent to footway. - High contribution and future potential. - Established within dense shrub bed and bamboo hedge, formally managed. - Likely easily replaceable. Consider transplanting tree if required. - Leaf scorch and small diameter limb dieback visible. Likely drought stress from dense understory planting.			10+	C2
T29*	Dawn Redwood ( <i>Metasequoia glyptostroboides</i> )	7	160	2	2	2	2	2.0/NW	2	Good	SM	Good	- Limited access to base. - Forms part of single line avenue adjacent o footway. - High contribution and future potential. - Established within dense shrub bed and bamboo hedge, formally managed. - Likely easily replaceable. Consider transplanting tree if required. - Dominant in line.			10+	C1,2

Tree ID	Species	Estimated Height (m)	Stem Diameter (mm)	Canopy Spread (N)	Canopy Spread (S)	Canopy Spread (E)	Canopy Spread (W)	First Significant Branch (m)	Canopy Clearance (m)	Physiological Condition	Life Stage	Structural Condition	Condition Comments	Preliminary Management Comments	Works to Facilitate the Proposed Development	Estimated Remaining Contribution	Category
T30*	Dawn Redwood ( <i>Metasequoia glyptostroboides</i> )	6	140#	2	2	2	2	2.0/S	2	Good	SM	Good	- No access to base. - Forms part of single line avenue adjacent o footway. - High contribution and future potential. - Established within dense shrub bed and bamboo hedge, formally managed. - Likely easily replaceable. Consider transplanting tree if required. - Leaf scorch visible.			10+	C1,2
H31*	Bamboo ( <i>Bambusoideae sp.</i> )	1.5	50	1	1	1	1	n/a	n/a	Good - Fair	SM	Good - Fair	- Bamboo hedge, managed.			10+	C2
H32*	Bamboo ( <i>Bambusoideae sp.</i> )	1.5	50	1	1	1	1	n/a	n/a	Good - Fair	SM	Good - Fair	- Bamboo hedge, managed.			10+	C2
H33*	Bamboo ( <i>Bambusoideae sp.</i> )	1.5	50	1	1	1	1	n/a	n/a	Good - Fair	SM	Good - Fair	- Bamboo hedge, managed.		Prune back to provide adequate clearance.	10+	C2
T34*	Dawn Redwood ( <i>Metasequoia glyptostroboides</i> )	5	140#	2	2	2.5	2.5	2.0/E	2	Good	SM	Good	- No access to base. - Forms part of single line avenue adjacent o footway. - High contribution and future potential. - Established within dense shrub bed and bamboo hedge, formally managed. - Likely easily replaceable. Consider transplanting tree if required.		Prune crown to provide adequate clearance up to 2.5m, back to suitable lateral branch.	10+	C1,2
H35*	Bamboo ( <i>Bambusoideae sp.</i> )	1.5	50	1	1	1	1	n/a	n/a	Good - Fair	SM	Good - Fair	- Mix of low lying ornamental shrubs present.		Prune back to provide	10+	C2

Tree ID	Species	Estimated Height (m)	Stem Diameter (mm)	Canopy Spread (N)	Canopy Spread (S)	Canopy Spread (E)	Canopy Spread (W)	First Significant Branch (m)	Canopy Clearance (m)	Physiological Condition	Life Stage	Structural Condition	Condition Comments	Preliminary Management Comments	Works to Facilitate the Proposed Development	Estimated Remaining Contribution	Category
															adequate clearance.		
T36*	Dawn Redwood ( <i>Metasequoia glyptostroboides</i> )	6	155	2	2	2	1	2.0/S	2	Good	SM	Good	- Forms part of single line avenue adjacent to footway. - High contribution and future potential. - Established within dense shrub bed and bamboo hedge, formally managed. - Likely easily replaceable. Consider transplanting tree if required.		Prune crown to provide adequate clearance up to 2.5m, back to suitable lateral branch.	10+	C1,2
H37*	Bamboo ( <i>Bambusoideae sp.</i> )	1.5	50	1	1	1	1	n/a	n/a	Good - Fair	SM	Good - Fair	- Bamboo hedge, managed.		Prune back to provide adequate clearance.	10+	C2
T38*	Dawn Redwood ( <i>Metasequoia glyptostroboides</i> )	5	130	2	2	2.5	2	2.5/E	2	Good	Y	Good	- Forms part of single line avenue adjacent o footway. - High contribution and future potential. - Established within dense shrub bed and bamboo hedge, formally managed. - Likely easily replaceable. Consider transplanting tree if required.		Prune crown to provide adequate clearance up to 2.5m, back to suitable lateral branch.	10+	C1,2
H39*	Bamboo ( <i>Bambusoideae sp.</i> )	1.5	50	1	1	1	1	n/a	n/a	Good - Fair	SM	Good - Fair	- Bamboo hedge, managed.		Prune back to provide adequate clearance.	10+	C2
T40*	Dawn Redwood ( <i>Metasequoia glyptostroboides</i> )	5	140	2	2	2	2	2.0/N	1.8	Good	Y	Good	- Forms part of single line avenue adjacent to footway. - High contribution and future potential. - Established within dense shrub bed and bamboo		Prune crown to provide adequate clearance up to 2.5m, back to suitable lateral branch.	10+	C1,2

Tree ID	Species	Estimated Height (m)	Stem Diameter (mm)	Canopy Spread (N)	Canopy Spread (S)	Canopy Spread (E)	Canopy Spread (W)	First Significant Branch (m)	Canopy Clearance (m)	Physiological Condition	Life Stage	Structural Condition	Condition Comments	Preliminary Management Comments	Works to Facilitate the Proposed Development	Estimated Remaining Contribution	Category
													hedge, formally managed. - Likely easily replaceable. Consider transplanting tree if required.				
T41*	Dawn Redwood ( <i>Metasequoia glyptostroboides</i> )	5	140#	2.5	2.5	2.5	2.5	2.0/N	2	Good	Y	Good	- No access to base. - Forms part of single line avenue adjacent to footway. - High contribution and future potential. - Established within dense shrub bed and bamboo hedge, formally managed. - Likely easily replaceable. Consider transplanting tree if required.		Prune crown to provide adequate clearance up to 2.5m, back to suitable lateral branch.	10+	C1,2
T42*	Dawn Redwood ( <i>Metasequoia glyptostroboides</i> )	5	135	2	2	2	1	2.0/W	2	Good	Y	Good	- Forms part of single line avenue adjacent to footway. - High contribution and future potential. - Established within dense shrub bed and bamboo hedge, formally managed. - Likely easily replaceable. Consider transplanting tree if required.		Prune crown to provide adequate clearance up to 2.5m, back to suitable lateral branch.	10+	C1,2
H43*	Bamboo ( <i>Bambusoideae sp.</i> )	1.5	50	1	1	1	1	n/a	n/a	Good - Fair	SM	Good - Fair	- Bamboo hedge, managed.			10+	C2
T44*	Austrian Pine ( <i>Pinus nigra</i> )	5	265	3	3	3	3	2.0/N	1.5	Good	SM	Good	- Forms part of single line avenue adjacent to footway. - High contribution and future potential.			10+	C1,2

Tree ID	Species	Estimated Height (m)	Stem Diameter (mm)	Canopy Spread (N)	Canopy Spread (S)	Canopy Spread (E)	Canopy Spread (W)	First Significant Branch (m)	Canopy Clearance (m)	Physiological Condition	Life Stage	Structural Condition	Condition Comments	Preliminary Management Comments	Works to Facilitate the Proposed Development	Estimated Remaining Contribution	Category
													- Established within low lying shrub mass, of ornamental plants, such as box. - Normal crown form and leaf density. Squat height, dense upper crown formation restricting view, potentially previous loss of apical leader, resulting in prolific lateral growth of previously subordinate branches.				
T45*	Austrian Pine ( <i>Pinus nigra</i> )	6	280	4	4	4	4	2.0/NW	1	Good	SM	Fair	- Forms part of single line avenue adjacent to footway. - High contribution and future potential. - Established within low lying shrub mass, of ornamental plants, such as box. - Codominant stem at circa 5m, U shaped union, with interlocking branches.	Consider pruning to remove interlocking branches to stimulate adaptive growth of union. (When funds allow)		20+	B2
T46*	Austrian Pine ( <i>Pinus nigra</i> )	8	305	4	4	4	4	1.8/SE	0.1	Good	SM	Good	- Forms part of single line avenue adjacent to footway. - High contribution and future potential. - Established within low lying shrub mass, of ornamental plants, such as box. - Secondary limb west at 2.5m growing straight up through crown. Formative prune to remove limb	Remove limb at 2.5m west extending into crown back to branch collar. (When funds allow)		20+	B2

Tree ID	Species	Estimated Height (m)	Stem Diameter (mm)	Canopy Spread (N)	Canopy Spread (S)	Canopy Spread (E)	Canopy Spread (W)	First Significant Branch (m)	Canopy Clearance (m)	Physiological Condition	Life Stage	Structural Condition	Condition Comments	Preliminary Management Comments	Works to Facilitate the Proposed Development	Estimated Remaining Contribution	Category
T47*	Austrian Pine ( <i>Pinus nigra</i> )	8	250	4	4	4	4	2.0/S	1.5	Fair	SM	Good	cutting back to branch collar. - Forms part of single line avenue adjacent o footway. - High contribution and future potential. - Established within low lying shrub mass, of ornamental plants, such as box. - Normal crown form and leaf density. - Minor crown sparsity, minor small diameter deadwood, no deviation in branching pattern. Small branch shedding likely cause by drought stress.			20+	B2
T48*	Austrian Pine ( <i>Pinus nigra</i> )	8	270	3	3	3	3	2.0/S	1	Good	SM	Good	- Forms part of single line avenue adjacent to footway. - High contribution and future potential. - Established within low lying shrub mass, of ornamental plants, such as box. - Normal crown form and leaf density. - Previously pruned back from footpath, internodal branch dieback, dead stub retained. No target.			20+	B2
T49*	Austrian Pine ( <i>Pinus nigra</i> )	8	315	4	4	4	4	2.0/SE	0.1	Good	SM	Good	- Forms part of single line avenue adjacent to footway. - High contribution and future potential.			20+	B2



Tree ID	Species	Estimated Height (m)	Stem Diameter (mm)	Canopy Spread (N)	Canopy Spread (S)	Canopy Spread (E)	Canopy Spread (W)	First Significant Branch (m)	Canopy Clearance (m)	Physiological Condition	Life Stage	Structural Condition	Condition Comments	Preliminary Management Comments	Works to Facilitate the Proposed Development	Estimated Remaining Contribution	Category
													- Established within low lying shrub mass, of ornamental plants, such as box. - Previous internodal pruning to lower crown, branch dieback. Stubs retained. No target.				
T50*	Austrian Pine ( <i>Pinus nigra</i> )	8	270	3	3	3	3	3.0/NW	1.7	Good	SM	Good	- Forms part of single line avenue adjacent to footway. - High contribution and future potential. - Established within low lying shrub mass, of ornamental plants, such as box. - Bird's nest within crown. - Patch of resin exudate on main stem northwest at circa 1.3m. Likely minor cambial damage, unknown cause. Normal crown form and leaf density.			20+	B2
T51*	Austrian Pine ( <i>Pinus nigra</i> )	8	285	3	3	3	3	2.0/S	0.5	Good	SM	Good	- Forms part of single line avenue adjacent to footway. - High contribution and future potential. - Established within low lying shrub mass, of ornamental plants, such as box. - Lower crown previously pruned back from footway. Internodal pruning, one limb with dieback to lateral branch, other limb likely dead.			20+	B2
T52*	Paper Birch ( <i>Betula papyrifera</i> )	7	140	2.5	1	2	1	2.0/E	1.5	Good	SM	Good	- Forms part of single line avenue			10+	C1,2

Tree ID	Species	Estimated Height (m)	Stem Diameter (mm)	Canopy Spread (N)	Canopy Spread (S)	Canopy Spread (E)	Canopy Spread (W)	First Significant Branch (m)	Canopy Clearance (m)	Physiological Condition	Life Stage	Structural Condition	Condition Comments	Preliminary Management Comments	Works to Facilitate the Proposed Development	Estimated Remaining Contribution	Category
													adjacent to footway. - High contribution and future potential. - Established within dense shrub bed. - Likely replaceable. - No visual of base due to shrubs mass.				
T53*	Paper Birch ( <i>Betula papyrifera</i> )	6	135	1	2	2	2	2.0/W	1.5	Good	SM	Good	- Forms part of single line avenue adjacent to footway. - High contribution and future potential. - Established within dense shrub bed. - Likely replaceable.			10+	C1,2
T54*	Paper Birch ( <i>Betula papyrifera</i> )	7	135	1	1	2	1	2.0/E	1	Good	SM	Good	- Forms part of single line avenue adjacent to footway. - High contribution and future potential. - Established within dense shrub bed. - Likely replaceable. - No visual of base due to shrubs mass.			10+	C1,2
T55*	Paper Birch ( <i>Betula papyrifera</i> )	8	165	2	2	2	2	2.0/N	1.5	Good	SM	Good	- Forms part of single line avenue adjacent to footway. - High contribution and future potential. - Established within dense shrub bed. - Likely replaceable. - No visual of base due to shrubs mass.			10+	C1,2

Tree ID	Species	Estimated Height (m)	Stem Diameter (mm)	Canopy Spread (N)	Canopy Spread (S)	Canopy Spread (E)	Canopy Spread (W)	First Significant Branch (m)	Canopy Clearance (m)	Physiological Condition	Life Stage	Structural Condition	Condition Comments	Preliminary Management Comments	Works to Facilitate the Proposed Development	Estimated Remaining Contribution	Category
G56*	Pine ( <i>Pinus sp.</i> ), Bamboo ( <i>Bambusoideae sp.</i> ), Box ( <i>Buxus sempervirens</i> ).	3	50	1	1	1	1	n/a	n/a	Good	Y-SM	Good	- Assorted ornamental planting. - Pine densely planted, typical of standard hedge planting densities. Potentially a dwarf ornamental pine cultivar. Short needles, two to a peg.			10+	C2
T57*	Himalayan Birch ( <i>Betula utilis</i> )	7	150#	3	3	3	3	2.0/W	1.3	Good	SM	Good	- No access to base. - Within dense ornamental planting. - Crown form and leaf density typical of species. - Likely easily replaceable. - Ornamental Fatsia plantings around stem.			10+	C1,2
T58*	Small-leaved Lime ( <i>Tilia cordata</i> )	5	90#	1.5	1.5	1.5	0.5	2.0/SE	1.7	Fair	SM	Fair	- No access to base. - Within dense ornamental planting. - Slight chlorosis of assumed younger growth. Suppressed form, no obvious suppression from neighbouring limes or birch. Potentially due to limited water and nutrient availability from dense ornamental planting. - Likely easily replaceable due to size and estimated age.			10+	C2
T59*	Small-leaved Lime ( <i>Tilia cordata</i> )	6	150#	2	2	2	2	2.0/SE	1	Good	SM	Good	- No access to base. - Within dense ornamental planting. - Dominant in group. - Likely easily replaceable.			10+	C1,2

Tree ID	Species	Estimated Height (m)	Stem Diameter (mm)	Canopy Spread (N)	Canopy Spread (S)	Canopy Spread (E)	Canopy Spread (W)	First Significant Branch (m)	Canopy Clearance (m)	Physiological Condition	Life Stage	Structural Condition	Condition Comments	Preliminary Management Comments	Works to Facilitate the Proposed Development	Estimated Remaining Contribution	Category
													- Part of single line formal avenue planting.				
T60*	Small-leaved Lime ( <i>Tilia cordata</i> )	6	150#	2	2	2	2	2.0/SE	1.8	Good	SM	Good	- No access to base. - Within dense ornamental planting. - Codominant in group. - Likely easily replaceable. - Part of single line formal avenue planting.			10+	C1,2
T61*	Small-leaved Lime ( <i>Tilia cordata</i> )	5	140#	1.5	1.5	1.5	1.5	2.0/S	1.8	Good	SM	Fair	- No access to base. - Within dense ornamental planting. - Codominant in group. - Likely easily replaceable. - Part of single line formal avenue planting. - Lean of main stem east by circa 10 degrees. No gravitropic reorientation or corrective growth. No gaps in adjacent avenue canopy.			10+	C2
G62*	Pine ( <i>Pinus sp.</i> ), Bamboo ( <i>Bambusoideae sp.</i> ), Box ( <i>Buxus sempervirens</i> )	3	50	1	1	1	1	n/a	n/a	Good	Y-SM	Good	- Assorted ornamental planting. - Pine densely planted, typical of standard hedge planting densities. Potentially a dwarf ornamental pine cultivar. Short needles, two to a peg.			10+	C2
T63*	Himalayan Birch ( <i>Betula utilis</i> )	6	145	3	3	3	2	2.0/E	1.3	Good	SM	Good	- Limited access to base. - Within dense ornamental planting. - Crown form and leaf density typical			10+	C1,2

Tree ID	Species	Estimated Height (m)	Stem Diameter (mm)	Canopy Spread (N)	Canopy Spread (S)	Canopy Spread (E)	Canopy Spread (W)	First Significant Branch (m)	Canopy Clearance (m)	Physiological Condition	Life Stage	Structural Condition	Condition Comments	Preliminary Management Comments	Works to Facilitate the Proposed Development	Estimated Remaining Contribution	Category
													of species. - Likely easily replaceable.				
T64*	Small-leaved Lime ( <i>Tilia cordata</i> )	6	140#	2	2	2	1	2.0/S	1.5	Good	SM	Good	- No access to base. - Within dense ornamental planting. - Codominant in group. - Likely easily replaceable. - Part of single line formal avenue planting.			10+	C1,2
T65*	Small-leaved Lime ( <i>Tilia cordata</i> )	6	190	2	2	2	2	2.0/E	1.5	Good	SM	Good	- Very limited access to base. - Within dense ornamental planting. - Codominant in group. - Likely easily replaceable. - Part of single line formal avenue planting. - Avenue of moderate quality however, each tree which forms the collective group is likely easily replaceable and is therefore of lower constraint.			10+	C1,2
T66*	Small-leaved Lime ( <i>Tilia cordata</i> )	6	165	2	2	1	2	2.0/S	1.5	Good	SM	Good	- Very limited access to base. Within dense ornamental planting. - Codominant in group. - Likely easily replaceable. - Part of ingle line formal avenue planting.			10+	C1,2
T67*	Small-leaved Lime ( <i>Tilia cordata</i> )	5	120	2	2	1	1	2.0/NW	2	Fair	SM	Good	- Very limited access to base, within dense ornamental planting. - Subdominant in group.			10+	C2

Tree ID	Species	Estimated Height (m)	Stem Diameter (mm)	Canopy Spread (N)	Canopy Spread (S)	Canopy Spread (E)	Canopy Spread (W)	First Significant Branch (m)	Canopy Clearance (m)	Physiological Condition	Life Stage	Structural Condition	Condition Comments	Preliminary Management Comments	Works to Facilitate the Proposed Development	Estimated Remaining Contribution	Category
													- Signs of structural suppression. - Likely easily replaceable. - Part of ingle line formal avenue planting.				
T68*	Small-leaved Lime ( <i>Tilia cordata</i> )	7	190	3	3	3	2	2.0/NW	1.5	Good	SM	Good	- Very limited access to base. Within dense ornamental planting. - Dominant in group. - Likely easily replaceable. - Part of single line formal avenue planting.			10+	C1,2
T69*	Himalayan Birch ( <i>Betula utilis</i> )	6	150#	3	3	3	3	2.0/NW	1.2	Good	SM	Good	- No access to base. - Within dense ornamental planting. - Crown form and leaf density typical of species. - Likely easily replaceable.			10+	C1,2
G70*	Pine ( <i>Pinus sp.</i> ), Bamboo ( <i>Bambusoideae sp.</i> ), Box ( <i>Buxus sempervirens</i> )	3	50	1	1	1	1	n/a	n/a	Good	Y-SM	Good	- Assorted ornamental planting. - Pine densely planted, typical of standard hedge planting densities. Potentially a dwarf ornamental pine cultivar. Short needles, two to a peg.			10+	C2
T71*	Small-leaved Lime ( <i>Tilia cordata</i> )	8	210	3	3	2	2	2.0/N	1	Good	SM	Good	- Very limited access to base. Within dense ornamental planting. - Identified as small leaved lime from orange tufts at leaf petiole base. – Central formal group planting of collectively on average larger stem size, crown			10+	C1,2

Tree ID	Species	Estimated Height (m)	Stem Diameter (mm)	Canopy Spread (N)	Canopy Spread (S)	Canopy Spread (E)	Canopy Spread (W)	First Significant Branch (m)	Canopy Clearance (m)	Physiological Condition	Life Stage	Structural Condition	Condition Comments	Preliminary Management Comments	Works to Facilitate the Proposed Development	Estimated Remaining Contribution	Category
													spread and height. Likely due to assumed increased size of dedicated central planting area. - Likely easily replaceable. - Part of single line formal avenue planting. - Avenue of moderate quality however, each tree which forms the collective group is likely easily replaceable and is therefore of lower constraint.				
G72*	Pine ( <i>Pinus sp.</i> ), Bamboo ( <i>Bambusoideae sp.</i> ), Box ( <i>Buxus sempervirens</i> )	3	50	1	1	1	1	n/a	n/a	Good	Y-SM	Good	Assorted ornamental planting.			10+	C2
T73*	Small-leaved Lime ( <i>Tilia cordata</i> )	7	150#	2	2	1	1	2.0/SE	1.5	Good	SM	Good	- No access to base. Within dense ornamental planting. - Codominant in group. - Likely easily replaceable. - Part of single line formal avenue planting.			10+	C1,2
T74*	Small-leaved Lime ( <i>Tilia cordata</i> )	7.5	180#	2	2	2	1	3.0/N	2	Good	SM	Good	- No access to base. - Within dense ornamental planting. - Codominant in group. - Likely previously crown raised due to slight swelling of main stem at 3m, typical of occluded wounds. - Likely easily replaceable. - Part of single line formal avenue planting.			10+	C1,2

Tree ID	Species	Estimated Height (m)	Stem Diameter (mm)	Canopy Spread (N)	Canopy Spread (S)	Canopy Spread (E)	Canopy Spread (W)	First Significant Branch (m)	Canopy Clearance (m)	Physiological Condition	Life Stage	Structural Condition	Condition Comments	Preliminary Management Comments	Works to Facilitate the Proposed Development	Estimated Remaining Contribution	Category
T75*	Small-leaved Lime ( <i>Tilia cordata</i> )	7	175	2	2	2	2	2.0/E	1.8	Good	SM	Good	- Limited access to base. - Within dense ornamental planting. - Small diameter deadwood throughout eastern crown, adjacent onto streetlight. - Codominant in group. Likely previously crown raised due to slight swelling of main stem at 3m, typical of occluded wounds. - Likely easily replaceable. - Part of single line formal avenue planting.			10+	C1,2
T76*	Small-leaved Lime ( <i>Tilia cordata</i> )	7	170	3	3	2	2	2.0/S	0.5	Good	SM	Good	- Limited access to base. Within dense ornamental planting - Codominant in group. - Adjacent to overhead light, basal position circa 1m southeast of lighting column base. - Likely easily replaceable. - Part of single line formal avenue planting.			10+	C1,2
T77*	Small-leaved Lime ( <i>Tilia cordata</i> )	7	180	2	2	2	2	2.0/N	1	Good	SM	Good	- Limited access to base. - Within dense ornamental planting. - Codominant in group. - Likely easily replaceable. - Part of single line formal avenue planting.			10+	C1,2
T78*	Small-leaved Lime ( <i>Tilia cordata</i> )	6	185	2	2	1	1	2.0/S	1	Good	SM	Good	- Limited access to base. - Within dense ornamental planting.			10+	C1,2



Tree ID	Species	Estimated Height (m)	Stem Diameter (mm)	Canopy Spread (N)	Canopy Spread (S)	Canopy Spread (E)	Canopy Spread (W)	First Significant Branch (m)	Canopy Clearance (m)	Physiological Condition	Life Stage	Structural Condition	Condition Comments	Preliminary Management Comments	Works to Facilitate the Proposed Development	Estimated Remaining Contribution	Category
													- Codominant in group. - Likely easily replaceable. - Part of single line formal avenue planting.				
T79*	Small-leaved Lime ( <i>Tilia cordata</i> )	6	150#	2	2	2.5	1	2.0/S	1.8	Good	SM	Good	- No access to base. - Within dense ornamental planting - Codominant in group. - Likely easily replaceable. - Part of single line formal avenue planting.			10+	C1,2
G80*	Small-leaved Lime ( <i>Tilia cordata</i> ), Common Lime ( <i>Tilia X europaea</i> )	8	170	2	2	2	2	n/a	n/a	Good	SM	Good	- 10 individual trees within group. Viewed from footway. - Good contribution to local character however, likely easily replaceable due to size and likely age.			10+	C1,2
T81*	Small-leaved Lime ( <i>Tilia cordata</i> )	5	135	1.5	1.5	1.5	1	2.0/NE	2	Good	SM	Good	- Established within single line avenue. - Very limited access to base due to low lying shrubs. - Crown form and leaf density typical of species. - Likely easily replaceable.			10+	C1,2
T82*	Common Lime ( <i>Tilia X europaea</i> )	6	185	2	2	2	2	2.0/N	1	Good	SM	Good	- Established within single line avenue. Very limited access to base due to low lying shrubs. - Crown form and leaf density typical of species. - Likely easily replaceable.			10+	C1,2

Tree ID	Species	Estimated Height (m)	Stem Diameter (mm)	Canopy Spread (N)	Canopy Spread (S)	Canopy Spread (E)	Canopy Spread (W)	First Significant Branch (m)	Canopy Clearance (m)	Physiological Condition	Life Stage	Structural Condition	Condition Comments	Preliminary Management Comments	Works to Facilitate the Proposed Development	Estimated Remaining Contribution	Category
T83*	Common Lime ( <i>Tilia X europaea</i> )	6	190	3	3	3	3	2.0/N	1	Good	SM	Good	<ul style="list-style-type: none"> <li>- Forms part of formal planting scheme, forming tree avenue with adjacent mixed shrubs.</li> <li>- Identified as common lime due to white tufts of hair at leaf petiole base.</li> <li>- Within grass formal planting area.</li> <li>- Avenue feature is of overall high landscape value however, each constituent tree is of low value due to overall size, age and therefore likely ease of replaceability.</li> <li>- Consider potential to transplant tree stock if required.</li> <li>- Low lying shrubs and bamboo restricting access to inspect base.</li> </ul>			10+	C1,2
T84*	Common Lime ( <i>Tilia X europaea</i> )	6	165	2.5	2.5	1	1	2.5/SW	2	Good	SM	Good	<ul style="list-style-type: none"> <li>- Forms part of formal planting scheme, forming tree avenue with adjacent mixed shrubs.</li> <li>- Identified as common lime due to white tufts of hair at leaf petiole base.</li> <li>- Within grass formal planting area.</li> <li>- Low lying shrubs and bamboo restricting access to inspect base.</li> </ul>			10+	C1,2
T85*	Common Lime ( <i>Tilia X europaea</i> )	6	170	2	2	2	2	2.5/NE	2	Good	SM	Good	<ul style="list-style-type: none"> <li>- Forms part of formal planting scheme, forming tree avenue with adjacent mixed shrubs.</li> </ul>			10+	C1,2

Tree ID	Species	Estimated Height (m)	Stem Diameter (mm)	Canopy Spread (N)	Canopy Spread (S)	Canopy Spread (E)	Canopy Spread (W)	First Significant Branch (m)	Canopy Clearance (m)	Physiological Condition	Life Stage	Structural Condition	Condition Comments	Preliminary Management Comments	Works to Facilitate the Proposed Development	Estimated Remaining Contribution	Category
													- Identified as common lime due to white tufts of hair at leaf petiole base. - Within grass formal planting area. - Low lying shrubs and bamboo restricting access to inspect base.				
T86*	Common Lime ( <i>Tilia X europaea</i> )	6	155	2	2	2	2	2.0/SW	2	Good	SM	Good	- Forms part of formal planting scheme, forming tree avenue with adjacent mixed shrubs. - Identified as common lime due to white tufts of hair at leaf petiole base. - Within grass formal planting area. - Low lying shrubs and bamboo restricting access to inspect base. - Epicormic development from base, typical of species.			10+	C1,2
T87*	Small-leaved Lime ( <i>Tilia cordata</i> )	5	140	2	2	2	2	2.0/W	2	Good	SM	Good	- Forms part of formal planting scheme, forming tree avenue with adjacent mixed shrubs. - Identified as small leaved lime due to as small leaved lime due to orange tufts of hair at leaf petiole base. - Within grass formal planting area. - Low lying shrubs and bamboo restricting access to inspect base. - One Small diameter limb			10+	C2

Tree ID	Species	Estimated Height (m)	Stem Diameter (mm)	Canopy Spread (N)	Canopy Spread (S)	Canopy Spread (E)	Canopy Spread (W)	First Significant Branch (m)	Canopy Clearance (m)	Physiological Condition	Life Stage	Structural Condition	Condition Comments	Preliminary Management Comments	Works to Facilitate the Proposed Development	Estimated Remaining Contribution	Category
													dying back within crown. - Previous crown raising works to stem, wounds with asymmetrical woundwood, most fully occluded.				
T88*	Small-leaved Lime ( <i>Tilia cordata</i> )	6	165	2	2	2	1	2.0/E	1.5	Good	SM	Good	- Forms part of formal planting scheme, forming tree avenue with adjacent mixed shrubs. - Identified as small leaved lime due to orange tufts of hair at leaf petiole base. - Within grass formal planting area. - Low lying shrubs and bamboo restricting access to inspect base. - Dominant in avenue.			10+	C1,2
T89*	Small-leaved Lime ( <i>Tilia cordata</i> )	4	130	1.5	1.5	1.5	1.5	2.0/N	2	Fair	SM	Good	- Forms part of formal planting scheme, forming tree avenue with adjacent mixed shrubs. - Identified as small leaved lime due to orange tufts of hair at leaf petiole base. - Low lying shrubs and bamboo restricting access to inspect base. - Established within area of hard landscaping, formed of a mix of block paving and asphalt type material or visually similar laid up to base. - Avenue feature is of overall high landscape value however, each	Consider removing asphalt or similar wearing course, replace with 2 inches of wood chip mulch. (When funds allow)		10+	C1,2

Tree ID	Species	Estimated Height (m)	Stem Diameter (mm)	Canopy Spread (N)	Canopy Spread (S)	Canopy Spread (E)	Canopy Spread (W)	First Significant Branch (m)	Canopy Clearance (m)	Physiological Condition	Life Stage	Structural Condition	Condition Comments	Preliminary Management Comments	Works to Facilitate the Proposed Development	Estimated Remaining Contribution	Category
													constituent tree is of low value due to overall size, age and therefore likely ease of replaceability. - Consider potential to transplant tree stock if required. - Inappropriate graffiti on stem, etched into bark. May require removal to mitigate if deemed necessary for sensitive sites. - Minor decline of crown. - Dominant in immediate group, showing signs of comparative least stress.				
T90*	Small-leaved Lime ( <i>Tilia cordata</i> )	4	130	1	1	1.5	1.5	2.0/N	2	Poor	SM	Good	- Forms part of formal planting scheme, forming tree avenue with adjacent mixed shrubs, predominantly bamboo. - Identified as small leaved lime due to orange tufts of hair at leaf petiole base. - Established within area of hard landscaping. - Decline of crown, dieback of crown with symmetrical chlorosis of leaves with scorching of leaf edges.	Consider removing asphalt or similar wearing course, replace with 2 inches of wood chip mulch. (When funds allow)		10+	C1,2
T91*	Small-leaved Lime ( <i>Tilia cordata</i> )	5	140	2	2	2	2	2.0/N	1.8	Poor	SM	Good	- Forms part of formal planting scheme, forming tree avenue with adjacent mixed shrubs, predominantly bamboo.	Consider removing asphalt or similar wearing course, replace with 2 inches of wood chip		10+	C1,2

Tree ID	Species	Estimated Height (m)	Stem Diameter (mm)	Canopy Spread (N)	Canopy Spread (S)	Canopy Spread (E)	Canopy Spread (W)	First Significant Branch (m)	Canopy Clearance (m)	Physiological Condition	Life Stage	Structural Condition	Condition Comments	Preliminary Management Comments	Works to Facilitate the Proposed Development	Estimated Remaining Contribution	Category
													- Identified as small leaved lime due to orange tufts of hair at leaf petiole base. - Established with area of hard landscaping with assumed sealed surface. - Decline of crown, dieback of crown with symmetrical chlorosis of leaves with scorching of leaf edges.	mulch. (When funds allow)			
T92*	Small-leaved Lime ( <i>Tilia cordata</i> )	6	150	2.5	2	1	1	2.0/N	1.5	Good	SM	Good	- Forms part of formal planting scheme, forming tree avenue with adjacent mixed shrubs, predominantly bamboo. - Identified as small leaved lime due to orange tufts of hair at leaf petiole base. - Within grass formal planting area. - Significant leaf scorch throughout crown. - Main stem leaning east with slight corrective growth. Asymmetrical crown. Dense herb layer preventing inspection of ground for cracks or signs of root plate heave.			10+	C2
T93*	Small-leaved Lime ( <i>Tilia cordata</i> )	6	165	2	2	2	2	2.0/E	1	Good	SM	Good	- Forms part of formal planting scheme, forming tree avenue with adjacent mixed shrubs, predominantly bamboo. - Identified as small leaved lime	Remove children's scooter.  ( < 12 months)		10+	C1,2

Tree ID	Species	Estimated Height (m)	Stem Diameter (mm)	Canopy Spread (N)	Canopy Spread (S)	Canopy Spread (E)	Canopy Spread (W)	First Significant Branch (m)	Canopy Clearance (m)	Physiological Condition	Life Stage	Structural Condition	Condition Comments	Preliminary Management Comments	Works to Facilitate the Proposed Development	Estimated Remaining Contribution	Category
													due to orange tufts of hair at leaf petiole base. - Within grass formal planting area. - Significant increase in visual crown vitality outside of hard surfaced planting pits. - Consider potential to transplant tree stock if required. - Children's scooter hung up in crown.				
T94*	Small-leaved Lime ( <i>Tilia cordata</i> )	6	180	2	2	2	2	2.0/N	0.5	Good	SM	Good	- Forms part of formal planting scheme, forming tree avenue with adjacent mixed shrubs, predominantly bamboo. - Identified as small leaved lime due to orange tufts of hair at leaf petiole base. - Within grass formal planting area. - Consider potential to transplant tree stock if required. - Epicormic shoot development on main stem, typical of species.			10+	C1,2
T95*	Small-leaved Lime ( <i>Tilia cordata</i> )	4	135	1	1	1	1	2.0/S	2	Poor	SM	Good	- Forms part of formal planting scheme, forming tree avenue with adjacent mixed shrubs, predominantly bamboo. - Identified as small leaved lime due to orange tufts of hair at leaf petiole base.	Consider removing asphalt or similar wearing course, replace with 2 inches of wood chip mulch. (When funds allow)		10+	C2

Tree ID	Species	Estimated Height (m)	Stem Diameter (mm)	Canopy Spread (N)	Canopy Spread (S)	Canopy Spread (E)	Canopy Spread (W)	First Significant Branch (m)	Canopy Clearance (m)	Physiological Condition	Life Stage	Structural Condition	Condition Comments	Preliminary Management Comments	Works to Facilitate the Proposed Development	Estimated Remaining Contribution	Category
													- Established with area of hard landscaping, formed of block paving and asphalt type material wearing course or visually similar laid up to base. - Decline of crown, dieback of crown with symmetrical chlorosis of leaves with scorch.				
G96*	Bamboo ( <i>Bambusoideae</i> sp.), Box ( <i>Buxus sempervirens</i> )	1	25	1	1	1	1	n/a	n/a	Good	Y	Good	Bamboo with significantly high growth rate, likely requires intensive management cycle.			10+	C2
T97*	Common Lime ( <i>Tilia X europaea</i> )	5	150	2	2	1	1	2.0/NW	2	Fair	SM	Good	- Forms part of formal planting scheme, forming tree avenue with adjacent mixed shrubs, predominantly bamboo. - Identified as common lime due to white tufts of hair at leaf petiole base. - Limited visuals of base due to herb layer. - Minor lower stem epicormic development, typical of species. - Minor swelling on main stem likely from previous pruning, with signs of previously fully occluded wound.			10+	C1,2
T98*	Common Lime ( <i>Tilia X europaea</i> )	7	195	2	2	2	2	2.0/N	2	Good	SM	Good	- Forms part of formal planting scheme, forming tree avenue with adjacent mixed shrubs, predominantly bamboo. - Identified as common lime due			10+	C1,2



Tree ID	Species	Estimated Height (m)	Stem Diameter (mm)	Canopy Spread (N)	Canopy Spread (S)	Canopy Spread (E)	Canopy Spread (W)	First Significant Branch (m)	Canopy Clearance (m)	Physiological Condition	Life Stage	Structural Condition	Condition Comments	Preliminary Management Comments	Works to Facilitate the Proposed Development	Estimated Remaining Contribution	Category
													to white tufts of hair at leaf petiole base. - Limited visuals of base due to herb layer. - Minor lower stem epicormic development, typical of species. - Mass of secondary stems originating at circa 3m. Included bark seams visible. Typical growth habit and attachment point formation of species. - Dominant in avenue.				
T99*	Common Lime ( <i>Tilia X europaea</i> )	5	135	2	2	1	2	2.0/SW	1.8	Fair	SM	Good	- Forms part of formal planting scheme, forming tree avenue with adjacent mixed shrubs, predominantly bamboo. - Identified as common lime due to white tufts of hair at leaf petiole base. - Limited visuals of base due to herb layer. - Minor lower stem epicormic development, typical of species. Swelling on main stem likely from previous pruning, with signs of occluded tissue.			10+	C2
T100*	Small-leaved Lime ( <i>Tilia cordata</i> )	6	150	2	2	2	1	2.0/W	1.8	Good	SM	Good	- Forms part of formal planting scheme, forming tree avenue with adjacent mixed shrubs, predominantly bamboo.			10+	C1,2

Tree ID	Species	Estimated Height (m)	Stem Diameter (mm)	Canopy Spread (N)	Canopy Spread (S)	Canopy Spread (E)	Canopy Spread (W)	First Significant Branch (m)	Canopy Clearance (m)	Physiological Condition	Life Stage	Structural Condition	Condition Comments	Preliminary Management Comments	Works to Facilitate the Proposed Development	Estimated Remaining Contribution	Category
													- Identified as small leaved lime due to tufts of orange hair at leaf petiole base. - Limited visuals of base due to herb layer. - Minor lower stem epicormic development, typical of species. - Codominant stem from circa 4m with bark ridge and minor adaptive growth. Likely part of similar genetic stock resulting in similar growth habits.				
T101*	Common Lime ( <i>Tilia X europaea</i> )	6	170	2.5	2.5	1	2	2.0/S	2	Good	SM	Fair	- Forms part of formal planting scheme, forming tree avenue with adjacent mixed shrubs, predominantly bamboo. - Identified as common lime due to white tufts of hair at leaf petiole base. - Limited visual of base due to herb layer. - Likely previously crown raised due to signs on stem of occluded wounds. - Minor lower stem epicormic development, typical of species. - Mass of secondary stems originating at circa 3m. Included bark seams visible. Higher potential for branch union failure due to stress of multiple attachments in the			10+	C1,2

Tree ID	Species	Estimated Height (m)	Stem Diameter (mm)	Canopy Spread (N)	Canopy Spread (S)	Canopy Spread (E)	Canopy Spread (W)	First Significant Branch (m)	Canopy Clearance (m)	Physiological Condition	Life Stage	Structural Condition	Condition Comments	Preliminary Management Comments	Works to Facilitate the Proposed Development	Estimated Remaining Contribution	Category
													same area on parent stem.				
T102*	Small-leaved Lime ( <i>Tilia cordata</i> )	6	155	2	2	2	2	2.0/S	1.8	Good	SM	Good	<ul style="list-style-type: none"> <li>- Forms part of formal planting scheme, forming tree avenue with adjacent mixed shrubs, predominantly bamboo.</li> <li>- Identified as small leaved lime due to tufts of orange hair at leaf petiole base.</li> <li>- Limited visuals of base due to herb layer.</li> <li>- Minor lower stem epicormic development, typical of species.</li> </ul>			10+	C1,2
T103*	Common Lime ( <i>Tilia X europaea</i> )	6	155	2	2	1	2	2.0/W	1.8	Good	SM	Good	<ul style="list-style-type: none"> <li>- Forms part of formal planting scheme, forming tree avenue with adjacent mixed shrubs, predominantly bamboo.</li> <li>- Identified as common lime due to white tufts of hair at leaf petiole base.</li> <li>- Limited visual of base due to herb layer.</li> <li>- Minor lower stem epicormic development, typical of species. Codominant stem from circa 4m with bark ridge and minor adaptive growth. Likely part of similar genetic stock to neighbouring limes.</li> </ul>			10+	C1,2
T104*	Small-leaved Lime ( <i>Tilia cordata</i> )	6	180	2	2	1	2	2.0/N	2	Good	SM	Good	<ul style="list-style-type: none"> <li>- Forms part of formal planting scheme, forming tree avenue with adjacent mixed</li> </ul>			10+	C1,2

Tree ID	Species	Estimated Height (m)	Stem Diameter (mm)	Canopy Spread (N)	Canopy Spread (S)	Canopy Spread (E)	Canopy Spread (W)	First Significant Branch (m)	Canopy Clearance (m)	Physiological Condition	Life Stage	Structural Condition	Condition Comments	Preliminary Management Comments	Works to Facilitate the Proposed Development	Estimated Remaining Contribution	Category
													shrubs, predominantly bamboo. - Limited visuals of base due to herb layer. - Minor lower stem epicormic development, typical of species. Codominant stem from circa 4m. Bark ridge visible, adaptive growth.				
G105*	Bamboo ( <i>Bambusoideae sp.</i> ), Fatsia ( <i>Fatsia japonica</i> )	2	50	1	1	1	1	n/a	n/a	Good	SM	Good	Bamboo and fatsia forming pseudo screen, utilising dense ornamental shrubs. Highly replaceable with like for like planting.			10+	C2
T106*	Small-leaved Lime ( <i>Tilia cordata</i> )	6	160	2	2	2.5	2.5	2.0/E	2	Good	SM	Good	- Forms part of formal planting scheme, forming tree avenue with adjacent mixed shrubs, predominantly bamboo. - Minor lower stem epicormic development, typical of species.			10+	C1,2
T107*	Small-leaved Lime ( <i>Tilia cordata</i> )	6	170	2	2	2	2	2.0/N	1	Good	SM	Good	- Forms part of formal planting scheme, forming tree avenue with adjacent mixed shrubs, predominantly bamboo. - Limited visuals of base due to herb layer. - Minor lower stem epicormic development, typical of species.			10+	C1,2
T108*	Small-leaved Lime ( <i>Tilia cordata</i> )	6	155	2	2	1	2	2.0/E	1.5	Good	SM	Good	- Forms part of formal planting scheme, forming tree avenue with adjacent mixed shrubs,			10+	C1,2

Tree ID	Species	Estimated Height (m)	Stem Diameter (mm)	Canopy Spread (N)	Canopy Spread (S)	Canopy Spread (E)	Canopy Spread (W)	First Significant Branch (m)	Canopy Clearance (m)	Physiological Condition	Life Stage	Structural Condition	Condition Comments	Preliminary Management Comments	Works to Facilitate the Proposed Development	Estimated Remaining Contribution	Category
													predominantly bamboo. - Limited visual of base due to herb layer. - Consider potential to transplant tree stock if required. - Minor lower stem epicormic development, typical of species.				
T109*	Small-leaved Lime ( <i>Tilia cordata</i> )	7	175	2	2	3	1	2.5/E	1.5	Good	SM	Good	- Forms part of formal planting scheme, forming tree avenue with adjacent mixed shrubs, predominantly bamboo. - Limited visuals of base due to herb layer. - Minor lower stem epicormic development, typical of species.			10+	C1,2
G110*	Bamboo ( <i>Bambusoideae sp.</i> )	1	25	1	1	1	1	n/a	n/a	Good	Y	Good	Managed bamboo hedge. High growth rate, likely requires intensive management cycle.			10+	C2
T111*	Paper Birch ( <i>Betula papyrifera</i> )	7	140	2	2	2	2	2.0/SW	1.3	Good	SM	Good	Established within bamboo hedge. - Very limited access to base. Crown form and leaf density typical of species. - Likely easily replaceable due to size and estimated age.			10+	C1,2
T112*	Paper Birch ( <i>Betula papyrifera</i> )	6	110	1.5	1.5	1.5	1.5	2.0/W	2	Good	SM	Good	- Good future potential. - Part of single line widely spaced path side avenue. - Likely good future contribution. - Established within bamboo hedging.			10+	C1,2

Tree ID	Species	Estimated Height (m)	Stem Diameter (mm)	Canopy Spread (N)	Canopy Spread (S)	Canopy Spread (E)	Canopy Spread (W)	First Significant Branch (m)	Canopy Clearance (m)	Physiological Condition	Life Stage	Structural Condition	Condition Comments	Preliminary Management Comments	Works to Facilitate the Proposed Development	Estimated Remaining Contribution	Category
T113*	Paper Birch ( <i>Betula papyrifera</i> )	7	150	2	2	2	2	2.0/E	1.2	Good	SM	Good	- Established within group of formal ornamental planting. - Very limited access to base. - Crown form typical of species. Minor crown sparsity and leaf scorch, likely environmental stress. - Likely easily replaceable.			10+	C1,2
T114*	Paper Birch ( <i>Betula papyrifera</i> )	7	150#	2	2	2	2	2.0/SE	1.2	Good	SM	Good	- Good future potential. - Part of single line widely spaced path side avenue. - Good contribution. - Likely good future contribution. - No access to base. Established within likely box hedging.			10+	C1,2
G115*	Box ( <i>Buxus sempervirens</i> ), Red Robin ( <i>Photinia × fraseri</i> 'Red Robin')	1	25	1	1	1	1	n/a	n/a	Good	Y	Good	Ornamental shrubs of box and red robin.			10+	C2
T116*	Paper Birch ( <i>Betula papyrifera</i> )	8	150	2	2	2	2.5	2.0/E	1.5	Good	SM	Good	- Established within group of ornamental planting. - Very limited access to base. - Crown form and leaf density typical of species.			10+	C1,2
H117*	Bamboo ( <i>Bambusoideae</i> sp.), Red Robin ( <i>Photinia × fraseri</i> 'Red Robin')	2	50	1	1	1	1	n/a	n/a	Good	SM	Good	- Bamboo and red robin, forming pseudo screen, utilising dense ornamental shrubs. - Easily replaceable with like for like planting.			10+	C2

Tree ID	Species	Estimated Height (m)	Stem Diameter (mm)	Canopy Spread (N)	Canopy Spread (S)	Canopy Spread (E)	Canopy Spread (W)	First Significant Branch (m)	Canopy Clearance (m)	Physiological Condition	Life Stage	Structural Condition	Condition Comments	Preliminary Management Comments	Works to Facilitate the Proposed Development	Estimated Remaining Contribution	Category
T118*	Paper Birch ( <i>Betula papyrifera</i> )	7	150	2	2.5	2	2	2.0/SW	1.5	Good	SM	Good	- Established on edge of bamboo. - Very limited access to base. - Crown form and leaf density typical of species. - Likely easily replaceable.			10+	C1,2
H119*	Bamboo ( <i>Bambusoideae sp.</i> )	1	25	1	1	1	1	n/a	n/a	Good	Y	Good	Manged bamboo hedge with small boundary ornamental planting, likely box.			10+	C2
T120*	Paper Birch ( <i>Betula papyrifera</i> )	7	150	2	2	2.5	2	0.1/S	0.5	Good	SM	Good	- Established on edge of bamboo. - Very limited access to base. - Crown form and leaf density typical of species. - Likely easily replaceable. - Multiple birch shoots arising at assumed base of stem, no visual. - Young shoots potentially self-sown as no physiological signs or symptoms present in crown to indicate stress response.			10+	C1,2
T121*	Paper Birch ( <i>Betula papyrifera</i> )	7	155	2.5	2	2	2	2.0/W	1.8	Good	SM	Good	- Good future potential. - Part of single line widely spaced path side avenue. - Likely good future contribution. - Likely easily replaceable due to size and estimated age. - Established on edge of bamboo hedge. - Very limited access to base.			10+	C1,2
T122*	Paper Birch ( <i>Betula papyrifera</i> )	7	160	2	2	2	2	2.2/E	1.5	Good	SM	Good	- Established within ornamental shrub bed.			10+	C1,2

Tree ID	Species	Estimated Height (m)	Stem Diameter (mm)	Canopy Spread (N)	Canopy Spread (S)	Canopy Spread (E)	Canopy Spread (W)	First Significant Branch (m)	Canopy Clearance (m)	Physiological Condition	Life Stage	Structural Condition	Condition Comments	Preliminary Management Comments	Works to Facilitate the Proposed Development	Estimated Remaining Contribution	Category
													- Very limited access to base. - Crown form and leaf density typical of species. - Likely easily replaceable.				
H123*	Red Robin ( <i>Photinia</i> × <i>fraseri</i> 'Red Robin')	2	50	2	2	2	2	n/a	n/a	Good	SM	Good	Red robin, forms screen utilising dense ornamental shrubs forming pseudo hedgerow. - Easily replaceable with like for like planting.			10+	C2
T124*	Paper Birch ( <i>Betula papyrifera</i> )	7	150#	2	2	2	2	2.2/S	1.5	Good	SM	Good	- Established within red robin 'hedgerow'. - No access to base. - Crown form and leaf density typical of species. - Likely easily replaceable.			10+	C1,2
G125*	Hybrid black poplar ( <i>Populus</i> × <i>canadensis</i> )	< 30	500#	4	4	4	4	n/a	n/a	Fair - Poor	EM-M	Fair - Poor	- Third party trees. - Very limited access to view trees due to field conditions. - Total group height estimated from footway. - Previously pollarded at an average height of circa 5m. - Overcrowding of boles. - Significant decline of numerous trees with structural defects throughout. Numerous dead and dying back pollard poles. - Requires safety survey and will require tree works to make target area safe prior to any proposed development.	Safety survey.  (< 1 month)  Re pollard above previous points and remove deadwood. May require staged reduction to stimulate dormant and epicormic buds near bole.  (Following safety survey)		20+	B2



Tree ID	Species	Estimated Height (m)	Stem Diameter (mm)	Canopy Spread (N)	Canopy Spread (S)	Canopy Spread (E)	Canopy Spread (W)	First Significant Branch (m)	Canopy Clearance (m)	Physiological Condition	Life Stage	Structural Condition	Condition Comments	Preliminary Management Comments	Works to Facilitate the Proposed Development	Estimated Remaining Contribution	Category
													- High risk. Stems around 200mm and over in diameter. Likely that lapse in pollard pruning is too great to pollard back to original bole, likely requiring staged pole removal.				
G126*	Hybrid black poplar ( <i>Populus x canadensis</i> ), Goat Willow ( <i>Salix caprea</i> ), Common Alder ( <i>Alnus glutinosa</i> )	10	150	2	2	2	2	n/a	n/a	Good - Fair	Y-SM	Good - Fair	- Likely self-sown on assumed floodplain or wet grassland area. Very wet conditions underfoot at time of survey. - Species indicative of wet environments.			10+	C2
T127*	Paper Birch ( <i>Betula papyrifera</i> )	7	160	2	2	2	2	2.0/NW	1.3	Good	SM	Good	- Good future potential. - Part of single line widely spaced path side avenue. - Likely easily replaceable. - Established on edge of bamboo hedge.			10+	C1,2
G128*	Red Robin ( <i>Photinia x fraseri</i> 'Red Robin')	1	25	1	1	1	1	n/a	n/a	Good	Y	Good	Ornamental shrubs, predominantly red robin.			10+	C2
H129*	Bamboo ( <i>Bambusoideae</i> sp.)	2	50	2	2	2	2	n/a	n/a	Good	Y-SM	Good	Bamboo hedge, managed.			10+	C2
T130*	Paper Birch ( <i>Betula papyrifera</i> )	7	135	1.5	1.5	1.5	1	2.0/SE	1.5	Good	SM	Good	- Established within bamboo 'hedgerow'. - Very limited access to base. - Crown form and leaf density typical of species. - Likely easily replaceable.			10+	C1,2
H131*	Bamboo ( <i>Bambusoideae</i> sp.)	2	50	2	2	2	2	n/a	n/a	Good	Y-SM	Good	Bamboo hedge, managed.			10+	C2

Tree ID	Species	Estimated Height (m)	Stem Diameter (mm)	Canopy Spread (N)	Canopy Spread (S)	Canopy Spread (E)	Canopy Spread (W)	First Significant Branch (m)	Canopy Clearance (m)	Physiological Condition	Life Stage	Structural Condition	Condition Comments	Preliminary Management Comments	Works to Facilitate the Proposed Development	Estimated Remaining Contribution	Category
T132*	Paper Birch ( <i>Betula papyrifera</i> )	7	135	2	2	2	2	2.0/NW	2	Good	SM	Good	- Good future potential. - Part of single line widely spaced path side avenue. - Likely good future contribution. - Likely easily replaceable. - Established on edge of bamboo hedge.			10+	C1,2
G133*	Red Robin ( <i>Photinia × fraseri</i> 'Red Robin'), Buddleja ( <i>Buddleja sp.</i> ), sycamore ( <i>Acer pseudoplatanus</i> ).	2	50	1	1	1	1	n/a	n/a	Good	Y-SM	Good	Red robin, and ornamental planting. Buddleja and young sycamore likely self-sown to the immediate west.			10+	C2
T134*	Paper Birch ( <i>Betula papyrifera</i> )	7	150	2	2	2	2	2.0/E	1.3	Good	SM	Good	- Good future potential. - Part of single line widely spaced path side avenue. - Likely easily replaceable. - Wounding to base, likely mechanical contact damage, good adaptive growth, partially occluded.			10+	C1,2
G135*	Aspen ( <i>Populus tremula</i> ),	15	200#	3	3	3	3	n/a	n/a	Good - Fair	Y-SM	Good - Fair	- Third party trees. - Stems within 1m of fence line. - High stand density. - Growth habit typical of suckering species. - Future growth increments will likely cause future damage to infrastructure.			10+	C1,2
T136*	Paper Birch ( <i>Betula papyrifera</i> )	7	140	1.5	1.5	1.5	1.5	2.0/N	1.7	Good	SM	Good	- Good future potential. - Part of single line widely spaced path side avenue. - Likely easily replaceable.			10+	C1,2

Tree ID	Species	Estimated Height (m)	Stem Diameter (mm)	Canopy Spread (N)	Canopy Spread (S)	Canopy Spread (E)	Canopy Spread (W)	First Significant Branch (m)	Canopy Clearance (m)	Physiological Condition	Life Stage	Structural Condition	Condition Comments	Preliminary Management Comments	Works to Facilitate the Proposed Development	Estimated Remaining Contribution	Category
T137*	Paper Birch ( <i>Betula papyrifera</i> )	7	145	2	2	2	2	2.0/E	2	Good	SM	Good	- Established on edge of within bamboo 'hedgerow'. - Very limited access to base. - Crown form and leaf density typical of species. - Likely easily replaceable.			10+	C1,2
G138*	Bamboo ( <i>Bambusoideae sp.</i> )	2	50	2	2	2	2	n/a	n/a	Good	SM	Good	Bamboo hedge, managed.			10+	C2
H139*	Bamboo ( <i>Bambusoideae sp.</i> ), Cherry Laurel ( <i>Prunus laurocerasus</i> )	3	100	2	2	2	2	n/a	n/a	Good - Fair	Y-SM	Good - Fair	Mixed Laurel and bamboo hedge, managed.			10+	C2
T140*	Paper Birch ( <i>Betula papyrifera</i> )	7	130#	2	2	2	2	2.0/S	2	Good	SM	Good	No access to base , within dense bamboo and laurel hedge. - Likely easily replaceable.			10+	C1,2
T141*	Paper Birch ( <i>Betula papyrifera</i> )	5	150#	2	2	2	2	2.0/W	2	Good	SM	Good	No access to base, within dense bamboo and laurel hedge. - Likely easily replaceable.			10+	C1,2

## Key to Abbreviations Used in the Survey

Ref No	Specific identification number given to each tree or group. T=Tree/H=Hedge/G=Group.	
Species	Common name followed by botanical name shown in <i>italics</i>	
RPA	Root Protection Area (As defined by BS5837)	
Stem diameter	Diameter of main stem, measured in millimetres at 1.5 m above ground level. (MS = Multi-stem tree measured in accordance with BS5837 Annexe C)	Av / Average:  indicates an average representative measured dimension for the group or feature
Spread	The width and breadth of the crown. Estimated on the four compass points in metres.	
Crown clearance	The estimated height (in metres) above ground level of the lowest significant branch attachments.	
#	Estimated dimensions	
*	Indicates estimated position of tree (not indicated on topographical survey).	
Category	Categorisation of the quality and benefits of trees on Site as per Table 1 and 2 of BS5837:2012. 1=Arboricultural quality/value 2=Landscape quality/value 3=Cultural quality/value (including conservation)	
	A=High quality/value 40yrs+ (light green). B=Moderate quality/value 20yrs+ (mid blue) C=Low quality/value min 10yrs/stem diameter less than 150mm (grey). U=Unsuitable for retention (dark red).	
Life stage	<b>Young (Y):</b> Newly planted tree 0-10 years. <b>Semi-Mature (SM):</b> Tree in the first third of its normal life expectancy for the species (significant potential for future growth in size). <b>Early Mature (EM):</b> Tree in the second third of its normal life expectancy for the species (some potential for future growth in size) <b>Mature (M):</b> Tree in the final third of its normal life expectancy for the species (having typically reached its approximate ultimate size). <b>Over Mature (OM):</b> Tree beyond the normal life expectancy for the species. <b>Veteran (V):</b> Tree which is of interest biologically, aesthetically or culturally because of its condition, size or age.	
Structural condition	<b>Good:</b> No significant structural defects <b>Fair:</b> Structural defects which can be resolved via remedial works. <b>Poor:</b> Structural defects which cannot be resolved via remedial works. <b>Dead:</b> Dead.	
Physiological condition	<b>Good:</b> Normal vitality including leaf size, bud growth, density of crown and wound wood development. <b>Fair:</b> Lower than normal vitality, reduced bud development, reduced crown density, reduced response to wounds. <b>Poor:</b> Low vitality, low development and distribution of buds, discoloured leaves, low crown density, little extension growth for the species. <b>Dead:</b> Dead <b>Fair/Good =</b> Indicates an intermediate condition <b>Fair – Good =</b> Indicates a range of conditions (e.g. within a group)	
Preliminary management recommendations	Works identified during the tree survey as part of sound arboricultural management, based on the current context of the Site (where relevant reference has been made to tree management based on the potential future context of the site).	

## Appendix C Site Photography





Figure 2. Showing third party tree avenue.



Figure 3. Third party tree avenue with damage to surfacing.



Figure 4. Looking south with T45 left.



Figure 5. Looking east with T55.





Figure 6. Looking west central to the lime avenue on Site.



Figure 7. Looking south at G125.



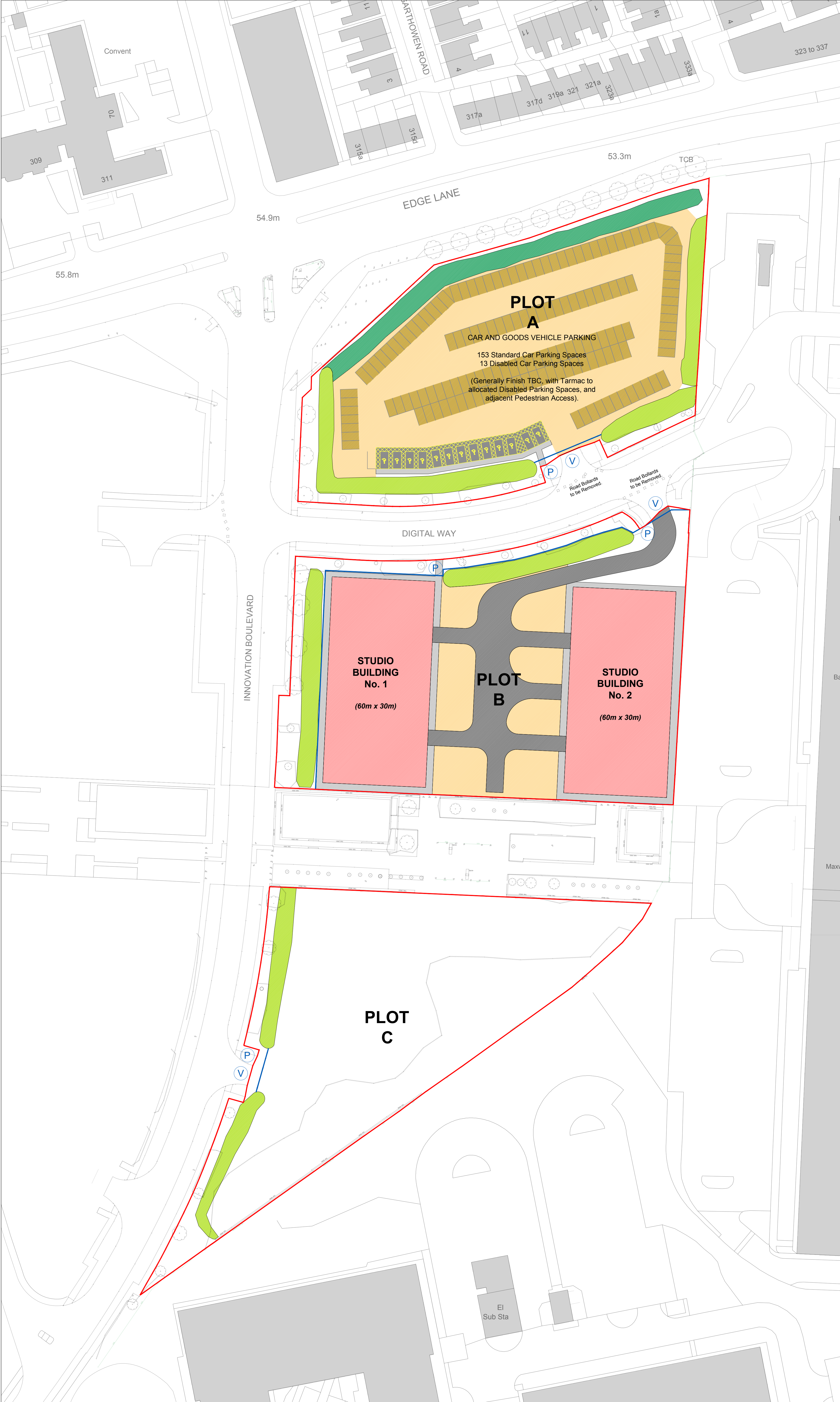
Figure 8. View north of Innovation Boulevard.



Figure 9. View west along Digital Way.

## Appendix D Proposed Development





**Notes**

This Drawing is an instrument of service and shall remain the property of Kier. It may not be reproduced or copied in any form. It shall not be used for the construction, enlargement or alteration of a building or area other than the said project without the authorisation of the issuing office.

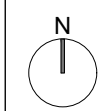
Contractors shall verify and be responsible for all dimensions and conditions and shall report any discrepancies to the issuing office before proceeding with any work. Drawings shall not be scaled.

- KEY**
- SITE BOUNDARY
  - VEHICULAR GRADE SURFACING.  
To be Tarmac or suitable surface for Heavy Vehicle Movements.
  - PEDESTRIAN FOOTWAY.  
To be Tarmac or suitable surface for DDA Access.
  - HARDSTANDING FOR VEHICLE PARKING.  
Type 1 MOT or Truqapave system, TBC.
  - HARDSTANDING FOR VEHICLE PARKING.  
Type 1 MOT or Truqapave system, TBC.
  - EXISTING PERIMETER BUNDS TO BE RETAINED.
  - PROPOSED PERIMETER GRASSED BUND TO BE FORMED FROM EXISTING SECTIONS REMOVED.
  - NEW PERIMETER WELDMESH FENCE.  
Height: 2.4m  
Colour: Green
  - INDICATES POSITION OF NEW PEDESTRIAN ACCESS GATE WITHIN WELDMESH FENCING.  
Width: 1.2m
  - INDICATES POSITION OF NEW VEHICLE ACCESS GATES WITHIN WELDMESH FENCING.  
Width: To match Bellmouth Width.
  - INDICATES POSITION OF NEW VEHICLE ACCESS HEIGHT RESTRICTION GATES.  
Width: To match Bellmouth Width.


**NOTE**

AREAS OF EXISTING BUND ARE TO BE REMOVED ADJACENT TO EACH OF THE 3No. EXISTING BELMOUTHS.

A LENGTH OF BUND ADJACENT TO STUDIO BUILDING No. 1 ALSO REQUIRES REMOVAL.



P03	Amendments to Plot B. Building footprints and associated circulation routes amended. West Fence Line amended to avoid mature trees.	AB	06.08.20	GT	06.08.20	GT	06.08.20
P02	Amendments to Plot A finish. Bund added to Plot A and pedestrian level access added to Plot B.	AB	03.08.20	GT	03.08.20	GT	03.08.20
P01	First Issue	AB	28.07.20	GT	28.07.20	GT	28.07.20
Rev.	Details	Author & Date	28.07.20	Checked & Date	28.07.20	Approved & Date	28.07.20



**KIER**

Issuing Office  
LIVERPOOL

Tel. no.

email

Internal Project Number  
031658

Client  
Morgan Sindall

Project name  
Liverpool - Pop Up Studios

Drawing Title  
Proposed GA Plan - Site General Arrangement

Scale 1:500	Original Size A1	RBA Stage Stage 03
Date of First Issue 28/07/2020	Author AB	Checked GT
Drawing Number 031658-DBS-XX-XX-DR-A-1200		Status S0
Project   Originator   Volume   Type   Role   Number		Rev. P03



## Appendix E Tree Protection Plan