



Contract: <b>Project Blue</b>			Client: <b>Buro Happold</b>		Trial Pit: <b>TPSS1.4</b>
Contract Ref: <b>764393</b>	Start: <b>12.01.18</b> End: <b>12.01.18</b>	Ground Level (m): <b>6.54</b>	National Grid Co-ordinate: <b>E:333387.4 N:392559.5</b>		Sheet: <b>2 of 4</b>

Eastern face



North and west faces

Method Used: <b>Machine dug</b>	Plant Used: <b>13 Ton Tracked Excavator</b>	Logged By: <b>GGoldthorpe</b>	Checked By: <b>pmr</b>	
---------------------------------	---	-------------------------------	------------------------	--





Contract: <b>Project Blue</b>		Client: <b>Buro Happold</b>		Trial Pit: <b>TPSS1.4</b>
Contract Ref: <b>764393</b>	Start: <b>12.01.18</b> End: <b>12.01.18</b>	Ground Level (m): <b>6.54</b>	National Grid Co-ordinate: <b>E:333387.4 N:392559.5</b>	Sheet: <b>3 of 4</b>

North eastern corner of pit



Spoil

Method Used: <b>Machine dug</b>	Plant Used: <b>13 Ton Tracked Excavator</b>	Logged By: <b>GGoldthorpe</b>	Checked By: <b>pmr</b>	
---------------------------------	---	-------------------------------	------------------------	--



Contract: <b>Project Blue</b>			Client: <b>Buro Happold</b>		Trial Pit: <b>TPSS1.4</b>
Contract Ref: <b>764393</b>	Start: <b>12.01.18</b> End: <b>12.01.18</b>	Ground Level (m): <b>6.54</b>	National Grid Co-ordinate: <b>E:333387.4 N:392559.5</b>		Sheet: <b>4 of 4</b>

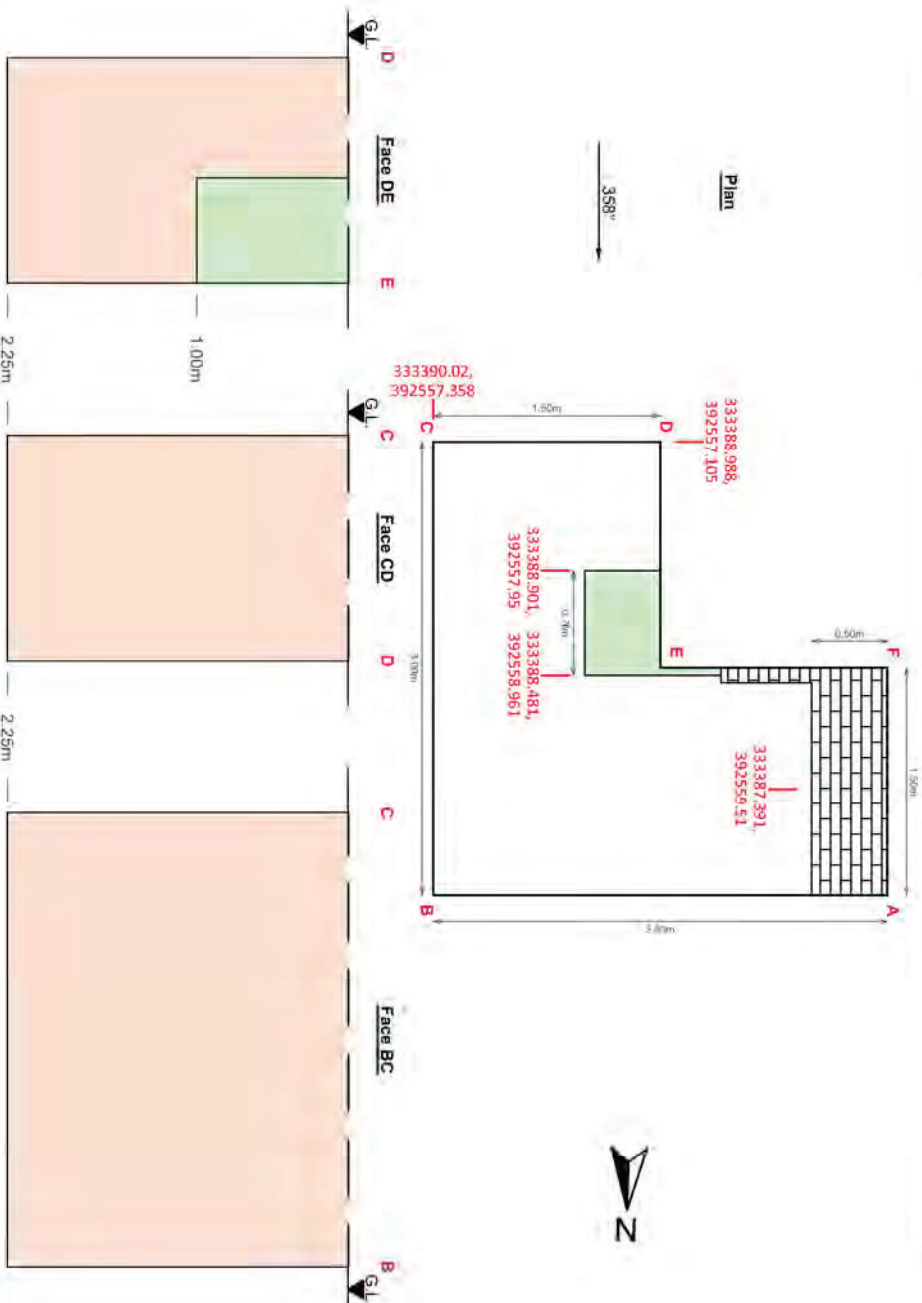
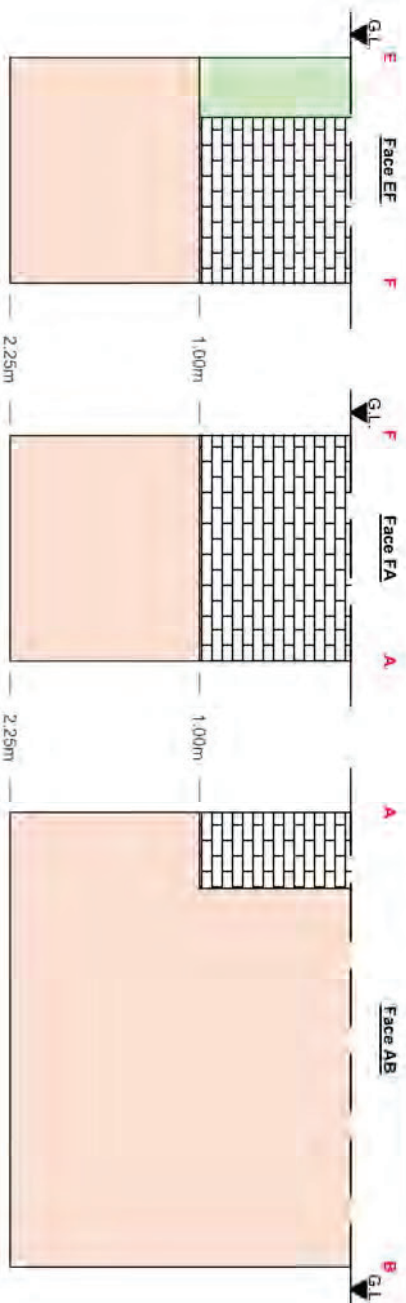
Metallic piping from spoil



GINT LIBRARY\_V8\_06.GLB LibVersion: v8\_06 - Core+Full Castleford SI - 008 | Log TRIAL PIT LOG - A4P | 764393 - PROJECT BLUE.GPJ - v8\_06.  
Structural Soils Ltd, Branch Office - Castleford, The Potteries, Pottery Street, Castleford, West Yorkshire, WF10 1NJ. Tel: 01977-552255, Fax: 01977-552299, Web: www.soils.co.uk, Email: ask@soils.co.uk, | 31/05/18 - 15:10 | AJ4 |

Method Used: <b>Machine dug</b>	Plant Used: <b>13 Ton Tracked Excavator</b>	Logged By: <b>GGoldthorpe</b>	Checked By: <b>PMR</b>	
---------------------------------	---	-------------------------------	------------------------	--





- LEGEND**
- Brick Wall (1c 1.00m depth)
  - Concrete Slab (45° slope)
  - Orangish Sand and Gravel

01	23.05.2018	Amendments	MW	AJ	AJ
00	21.02.2018	Trial Pit Drawing	MW	AJ	AJ
REV	DATE	DESCRIPTION	BY	CHD	APR
DIMENSION			ORIGIN SIZE		
m			A4		

**STRUCTURAL SOILS**

The Pollenree  
Pollery Street  
Castletford  
WF10 1NL

Tel: 01977 552255  
ask@soils.co.uk  
www.soils.co.uk



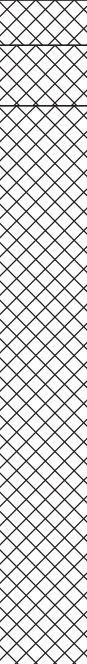
CLIENT		Burc Happold	
PROJECT		Project Blue	
TITLE		Trial Pit Drawings - TPSS1.4	
REF. NO.	FIGURE	1	
764393			
DRAWING STATUS	REV	01	
Final			







Contract: <b>Project Blue</b>			Client: <b>Buro Happold</b>		Trial Pit: <b>TPSS1.5</b>
Contract Ref: <b>764393</b>	Start: <b>11.01.18</b> End: <b>11.01.18</b>	Ground Level (m): <b>6.55</b>	National Grid Co-ordinate: <b>E:333416.3 N:392560.1</b>		Sheet: <b>1 of 4</b>

Samples and In-situ Tests				Water	Backfill	Description of Strata	Depth (Thick ness)	Material Graphic Legend
Depth	No	Type	Results					
1.50	101	ES				MADE GROUND: Reinforced CONCRETE with subrounded to subangular fine to coarse gravel sized clasts of mixed lithologies. . . . Metal bar found in pit, appears to used as shuttering for some concrete present on east edge of pit.	0.15	
						MADE GROUND: Coarse gravel sized angular layer of bitumen. Strong ofour of 'tar'.	0.35	
						MADE GROUND: Orangish reddish brown SAND and GRAVEL. Gravel is subangular to subrounded fine to coarse of sandstone. Sand is fine to coarse.	(1.85)	
							2.20	
Trial pit terminated at 2.20m depth.								

Plan (Not to Scale)			General Remarks		
			<div>1. Trial pit scanned with GPR, CAT and Genny prior to excavation.</div> <div>2. Water seepage at 2.00m.</div> <div>3. Excavation unstable on all sides during excavation.</div> <div>4. Trial pit similar on sides.</div> <div>5. On completion, borehole backfilled with arisings.</div>		
All dimensions in metres			Scale: <b>1:25</b>		
Method Used: <b>Machine dug</b>	Plant Used: <b>13 Ton Tracked Excavator</b>		Logged By: <b>GGoldthorpe</b>	Checked By: <b>PmR</b>	

GINT LIBRARY V8 06 018 ProjVersion: v8\_06 - Core+Full Castleford SI - 008 | Log TRIAL PIT LOG - A4P | 764393 - PROJECT BLUE.GPJ - v8\_06.  
Structural Soils Ltd, Branch Office - Castleford: The Potteries, Pottery Street, Castleford, West Yorkshire, WF10 1NJ. Tel: 01977-552255, Fax: 01977-552299, Web: www.soils.co.uk, Email: ask@soils.co.uk | 31/05/18 - 15:10 | A/J4 |



Contract: <b>Project Blue</b>			Client: <b>Buro Happold</b>		Trial Pit: <b>TPSS1.5</b>
Contract Ref: <b>764393</b>	Start: <b>11.01.18</b> End: <b>11.01.18</b>	Ground Level (m): <b>6.55</b>	National Grid Co-ordinate: <b>E:333416.3 N:392560.1</b>		Sheet: <b>2 of 4</b>

Pit facing northward



Pit facing southward

Method Used: <b>Machine dug</b>	Plant Used: <b>13 Ton Tracked Excavator</b>	Logged By: <b>GGoldthorpe</b>	Checked By: <b>pmr</b>	
---------------------------------	---	-------------------------------	------------------------	--





Contract: <b>Project Blue</b>		Client: <b>Buro Happold</b>		Trial Pit: <b>TPSS1.5</b>
Contract Ref: <b>764393</b>	Start: <b>11.01.18</b> End: <b>11.01.18</b>	Ground Level (m): <b>6.55</b>	National Grid Co-ordinate: <b>E:333416.3 N:392560.1</b>	Sheet: <b>3 of 4</b>

Eastern face



Western face

Method Used: <b>Machine dug</b>	Plant Used: <b>13 Ton Tracked Excavator</b>	Logged By: <b>GGoldthorpe</b>	Checked By: <b>pmr</b>	
---------------------------------	---	-------------------------------	------------------------	--





Contract: <b>Project Blue</b>			Client: <b>Buro Happold</b>		Trial Pit: <b>TPSS1.5</b>
Contract Ref: <b>764393</b>	Start: <b>11.01.18</b> End: <b>11.01.18</b>	Ground Level (m): <b>6.55</b>	National Grid Co-ordinate: <b>E:333416.3 N:392560.1</b>		Sheet: <b>4 of 4</b>

Spoil



Steel from eastern face of pit

GINT LIBRARY\_V8\_06.GLB LibVersion: v8\_06\_018 PriVersion: v8\_06 - Core+Full Castleford SI - 008 | Log TRIAL PIT LOG - A4P | 764393 - PROJECT BLUE.GPJ - v8\_06.  
Structural Soils Ltd, Branch Office - Castleford, The Potteries, Pottery Street, Castleford, West Yorkshire, WF10 1NJ. Tel: 01977-552255, Fax: 01977-552299, Web: www.soils.co.uk, Email: ask@soils.co.uk, | 31/05/18 - 15:11 | AJ4 |

Method Used: <b>Machine dug</b>	Plant Used: <b>13 Ton Tracked Excavator</b>	Logged By: <b>GGoldthorpe</b>	Checked By: <b>pmr</b>	
---------------------------------	---	-------------------------------	------------------------	--







Contract: <b>Project Blue</b>			Client: <b>Buro Happold</b>		Trial Pit: <b>TPSS2.1</b>
Contract Ref: <b>764393</b>	Start: <b>12.01.18</b> End: <b>12.01.18</b>	Ground Level (m): <b>6.66</b>	National Grid Co-ordinate: <b>E:333360.9 N:392418.2</b>		Sheet: <b>1 of 2</b>

Samples and In-situ Tests				Water	Backfill	Description of Strata	Depth (Thickness)	Material Graphic Legend
Depth	No	Type	Results					
						MADE GROUND: Black tarmacadam containing clasts of mixed lithologies, fine gravel in size.	0.05	
						MADE GROUND: Dark grey rectangular to square granite cobbles making a floor (0.10m x 1.0m x 1.0m)	0.15	
						MADE GROUND: Dark grey to black CONCRETE with subrounded fine to medium sized gravel clasts of mixed lithologies. Some brick.	(0.30)	
						MADE GROUND: Orangish reddish brown clayey SAND and GRAVEL. Sand is fine to coarse. Gravel is subangular fine to coarse of sandstone.	0.45	
							(1.85)	
						Trial pit terminated at 2.30m depth.	2.30	

Plan (Not to Scale)		General Remarks			
		<div>1. Trial pit scanned with GPR, CAT and Genny prior to excavation.</div> <div>2. Trial pit remained stable during excavation.</div> <div>3. Water strike at 2.10m.</div> <div>4. Trial pit backfilled with arisings on completion.</div> <div>5. In northern end of pit (against warehouse wall), foundations are present (see trial pit sketches/projections).</div>			
		All dimensions in metres		Scale:	1:25
Method Used: <b>Machine dug</b>	Plant Used: <b>13 Ton Tracked Excavator</b>	Logged By: <b>GGoldthorpe</b>	Checked By: <b>PmR</b>		

GINT LIBRARY V8 06.GLB LibVersion: v8\_06 018 ProjVersion: v8\_06 - Core+Full Castleford SI - 008 | Log TRIAL PIT LOG - A4P | 764393 - PROJECT BLUE.GPJ - v8\_06.  
Structural Soils Ltd, Branch Office - Castleford, The Potteries, Pottery Street, Castleford, West Yorkshire, WF10 1NJ. Tel: 01977-552255, Fax: 01977-552299, Web: www.soils.co.uk, Email: ask@soils.co.uk | 31/05/18 - 15:44 | A/J4 |





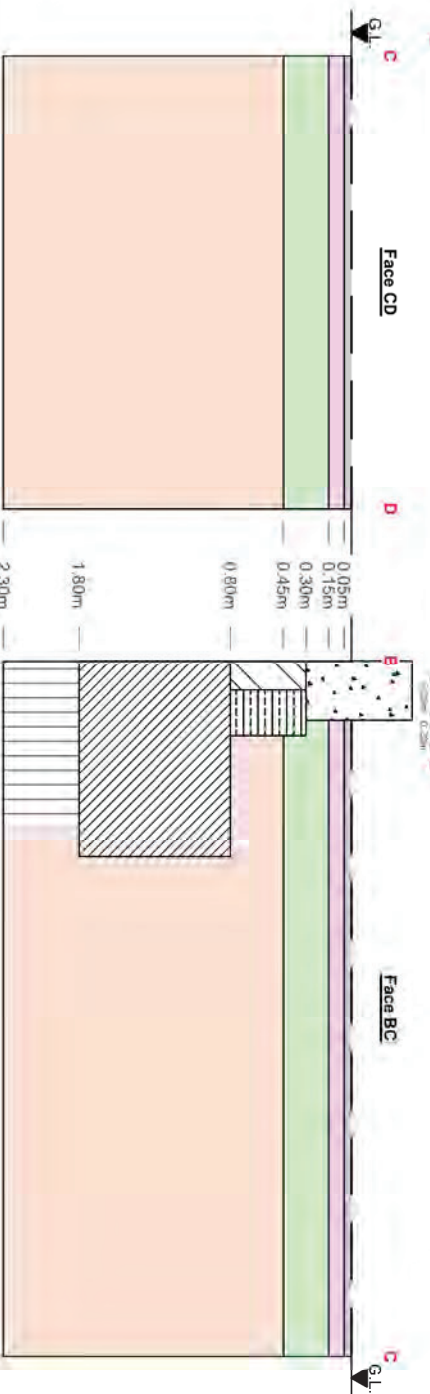
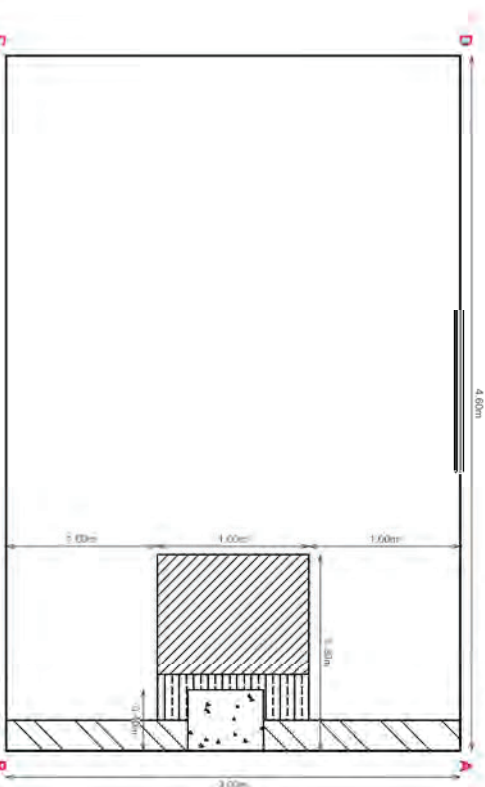
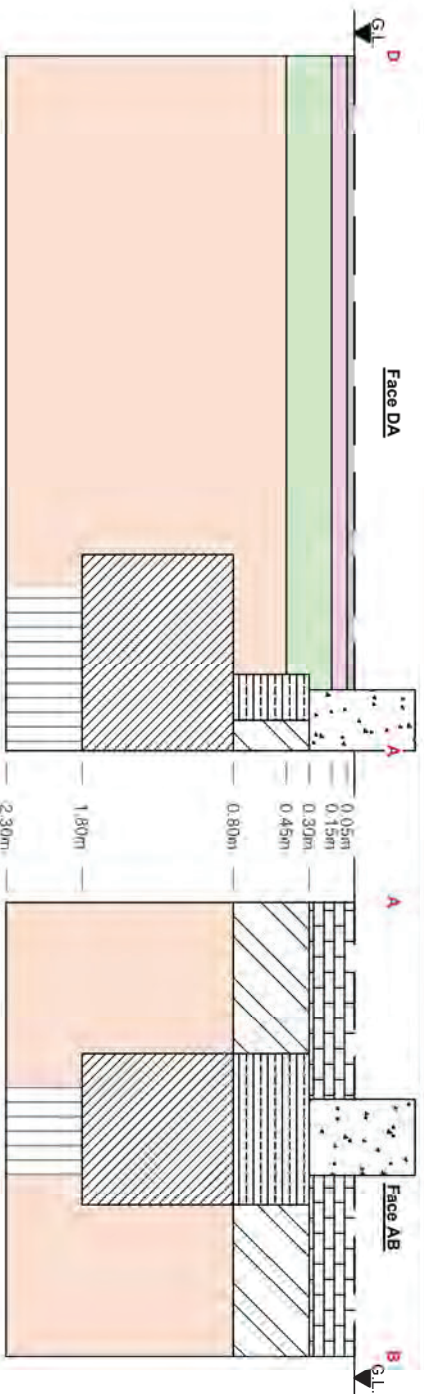
Contract: <b>Project Blue</b>		Client: <b>Buro Happold</b>		Trial Pit: <b>TPSS2.1</b>
Contract Ref: <b>764393</b>	Start: <b>12.01.18</b> End: <b>12.01.18</b>	Ground Level (m): <b>6.66</b>	National Grid Co-ordinate: <b>E:333360.9 N:392418.2</b>	Sheet: <b>2 of 2</b>

Excavated foundation and possible pile cap



GINT LIBRARY\_V8\_06.GLB LibVersion: v8\_06\_018 ProjVersion: v8\_06 - Core+Full Castleford SI - 008 | Log TRIAL PIT LOG - A4P | 764393 - PROJECT BLUE.GPJ - v8\_06.  
Structural Soils Ltd, Branch Office - Castleford, The Potteries, Pottery Street, Castleford, West Yorkshire, WF10 1NJ. Tel: 01977-552255, Fax: 01977-552299, Web: www.soils.co.uk, Email: ask@soils.co.uk, | 31/05/18 - 15:45 | AJ4 |

Method Used: <b>Machine dug</b>	Plant Used: <b>13 Ton Tracked Excavator</b>	Logged By: <b>GGoldthorpe</b>	Checked By: <b>PMR</b>	
---------------------------------	---	-------------------------------	------------------------	--



LEGEND				
	Tarmacadam			
	Granite Cobbles			
	Concrete			
	Orange Sand and Gravel			
	Concrete Column			
	Foundation			
	Ring Beam Foundation			
	Possible Pile Cap			
	Possible Pile			

REV	DATE	DESCRIPTION	BY	CHD	APR
01	23.05.2018	Amendments	MW	AJ	AJ
00	21.02.2018	Trial Pit Drawing	MW	AJ	AJ

UNIT	SCALE	ORIGIN SIZE
m	1:50	A4

**STRUCTURAL SOILS**  
 The Pollenree  
 Pollery Street  
 Castletford  
 WF10 1NL  
 Tel: 01977 552255  
 ask@soils.co.uk  
 www.soils.co.uk

CLIENT	Burc Happold
PROJECT	Project Blue
TITLE	Trial Pit Drawings - TPSS2.1
JOB NO	764393
DRAWING STATUS	Final
SCALE BAR	0 0.5 1 1.5 2 2.5m





Samples and In-situ Tests				Water	Backfill	Description of Strata	Depth (Thickness)	Material Graphic Legend
Depth	No	Type	Results					
						MADE GROUND: Light grey (black on fresh surface) TARMACADAM with subangular to angular fine to medium gravel of mixed lithologies.	0.05	
						MADE GROUND: Light grey CONCRETE containing cobble to coarse gravel sized clasts of mixed lithologies, mostly granite.	0.30	
						MADE GROUND: Orangish reddish brown sandy gravelly CLAY. Gravel is subrounded of sandstone. Sand is fine to coarse overlaying in places rectangular blocks of granite (30x10x15).	(1.70)	
							2.00	
						Trial pit terminated at 2.00m depth re-emptying water ingress and instability.		

SINT\_LIBRARY\_V8\_06.GLB LibVersion: v8\_06\_018 PriVersion: v8\_06\_Core+Full Castleford SI - 008 | Log TRIAL PIT.LOG - A4P | 764393 - PROJECT BLUE.GPJ - v8\_06  
 Structural Soils Ltd Branch Office - Castleford: The Potteries Pottery Street, Castleford, West Yorkshire, WF10 1NJ. Tel: 01977-552255. Fax: 01977-552299. Web: www.soils.co.uk. Email: ask@soils.co.uk | 31/05/18 - 15:45 A.J.



Contract: <b>Project Blue</b>			Client: <b>Buro Happold</b>		Trial Pit: <b>TPSS2.2</b>
Contract Ref: <b>764393</b>	Start: <b>15.01.18</b> End: <b>15.01.18</b>	Ground Level (m): <b>6.81</b>	National Grid Co-ordinate: <b>E:333377.4 N:392405.2</b>		Sheet: <b>2 of 4</b>

Northern face



Southern face

Method Used: <b>Machine dug</b>	Plant Used: <b>13 Ton Tracked Excavator</b>	Logged By: <b>GGoldthorpe</b>	Checked By: <b>pmr</b>	
---------------------------------	---	-------------------------------	------------------------	--





Contract: <b>Project Blue</b>			Client: <b>Buro Happold</b>		Trial Pit: <b>TPSS2.2</b>
Contract Ref: <b>764393</b>	Start: <b>15.01.18</b> End: <b>15.01.18</b>	Ground Level (m): <b>6.81</b>	National Grid Co-ordinate: <b>E:333377.4 N:392405.2</b>		Sheet: <b>3 of 4</b>

Eastern face



Western face

Method Used: <b>Machine dug</b>	Plant Used: <b>13 Ton Tracked Excavator</b>	Logged By: <b>GGoldthorpe</b>	Checked By: <b>pmr</b>	
---------------------------------	---	-------------------------------	------------------------	--





Contract: <b>Project Blue</b>			Client: <b>Buro Happold</b>		Trial Pit: <b>TPSS2.2</b>
Contract Ref: <b>764393</b>	Start: <b>15.01.18</b> End: <b>15.01.18</b>	Ground Level (m): <b>6.81</b>	National Grid Co-ordinate: <b>E:333377.4 N:392405.2</b>		Sheet: <b>4 of 4</b>

Spoil






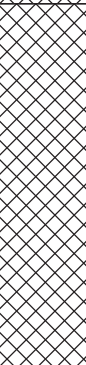
Cobbles spoil

Method Used: <b>Machine dug</b>	Plant Used: <b>13 Ton Tracked Excavator</b>	Logged By: <b>GGoldthorpe</b>	Checked By: <b>pmr</b>	
---------------------------------	---	-------------------------------	------------------------	--





Contract: <b>Project Blue</b>			Client: <b>Buro Happold</b>		Trial Pit: <b>TPSS2.3</b>
Contract Ref: <b>764393</b>	Start: <b>16.01.18</b> End: <b>16.01.18</b>	Ground Level (m): <b>6.80</b>	National Grid Co-ordinate: <b>E:333356.2 N:392409.8</b>		Sheet: <b>1 of 4</b>

Samples and In-situ Tests				Water	Backfill	Description of Strata	Depth (Thick ness)	Material Graphic Legend
Depth	No	Type	Results					
0.30-1.00	1	B				MADE GROUND: Grey to black TARMACADAM with clasts of subrounded fine to medium gravel of mixed lithologies.	0.05	
						MADE GROUND: Light grey CONCRETE containing subangular to rounded fine to coarse gravel of mixed lithologies.	0.30	
						MADE GROUND: Light grey CONCRETE supporting brick wall of warehouse. Likely a foundation (only on western face, against warehouse wall- see trial pit sketches/projections).	(0.50)	
1.00-2.00	2	B				MADE GROUND: Orangish reddish brown cobbly SAND and GRAVEL. Gravel is subrounded to subangular fine to coarse of sandstone. Sand is fine to coarse. Low to medium cobble content, subrounded to subangular of sandstone and red brick.	0.80	
							(1.20)	
							2.00	
Trial pit terminated at 2.00m depth due to client inspection having not found piles.								

Plan (Not to Scale)			General Remarks		
			<ul style="list-style-type: none"><li>1. Location scanned with CAT and Genny and GPR prior to excavation.</li><li>2. Trial pit remained dry and stable during excavation.</li><li>3. All sides similar.</li><li>4. On completion, borehole backfilled with arisings.</li></ul>		
All dimensions in metres			Scale: <b>1:25</b>		
Method Used: <b>Machine dug</b>	Plant Used: <b>13 Ton Tracked Excavator</b>	Logged By: <b>GGoldthorpe</b>	Checked By: <b>PmR</b>		

GINT LIBRARY V8 06 018 ProjVersion: v8\_06 - Core+Full Castleford SI - 008 | Log TRIAL PIT LOG - A4P | 764393 - PROJECT BLUE.GPJ - v8\_06.  
Structural Soils Ltd, Branch Office - Castleford, The Potteries, Pottery Street, Castleford, West Yorkshire, WF10 1NJ. Tel: 01977-552255, Fax: 01977-552299, Web: www.soils.co.uk, Email: ask@soils.co.uk | 31/05/18 - 15:46 | A/J4 |



Contract: <b>Project Blue</b>			Client: <b>Buro Happold</b>		Trial Pit: <b>TPSS2.3</b>
Contract Ref: <b>764393</b>	Start: <b>16.01.18</b> End: <b>16.01.18</b>	Ground Level (m): <b>6.80</b>	National Grid Co-ordinate: <b>E:333356.2 N:392409.8</b>		Sheet: <b>2 of 4</b>

Northern face



Eastern face

GINT LIBRARY\_V8\_06.GLB LibVersion: v8\_06\_018 PriVersion: v8\_06 - Core+Full Castleford SI - 008 | Log TRIAL PIT LOG - A4P | 764393 - PROJECT BLUE.GPJ - v8\_06.  
Structural Soils Ltd, Branch Office - Castleford: The Potteries, Pottery Street, Castleford, West Yorkshire, WF10 1NJ. Tel: 01977-552255, Fax: 01977-552299, Web: www.soils.co.uk, Email: ask@soils.co.uk, | 31/05/18 - 15:46 | AJ4 |

Method Used: <b>Machine dug</b>	Plant Used: <b>13 Ton Tracked Excavator</b>	Logged By: <b>GGoldthorpe</b>	Checked By: <b>pmr</b>	
---------------------------------	---	-------------------------------	------------------------	--





Contract: <b>Project Blue</b>			Client: <b>Buro Happold</b>		Trial Pit: <b>TPSS2.3</b>
Contract Ref: <b>764393</b>	Start: <b>16.01.18</b> End: <b>16.01.18</b>	Ground Level (m): <b>6.80</b>	National Grid Co-ordinate: <b>E:333356.2 N:392409.8</b>		Sheet: <b>3 of 4</b>

Western face



Spoil

Method Used: <b>Machine dug</b>	Plant Used: <b>13 Ton Tracked Excavator</b>	Logged By: <b>GGoldthorpe</b>	Checked By: <b>pmr</b>	
---------------------------------	---	-------------------------------	------------------------	--



Contract: <b>Project Blue</b>			Client: <b>Buro Happold</b>		Trial Pit: <b>TPSS2.3</b>
Contract Ref: <b>764393</b>	Start: <b>16.01.18</b> End: <b>16.01.18</b>	Ground Level (m): <b>6.80</b>	National Grid Co-ordinate: <b>E:333356.2 N:392409.8</b>		Sheet: <b>4 of 4</b>

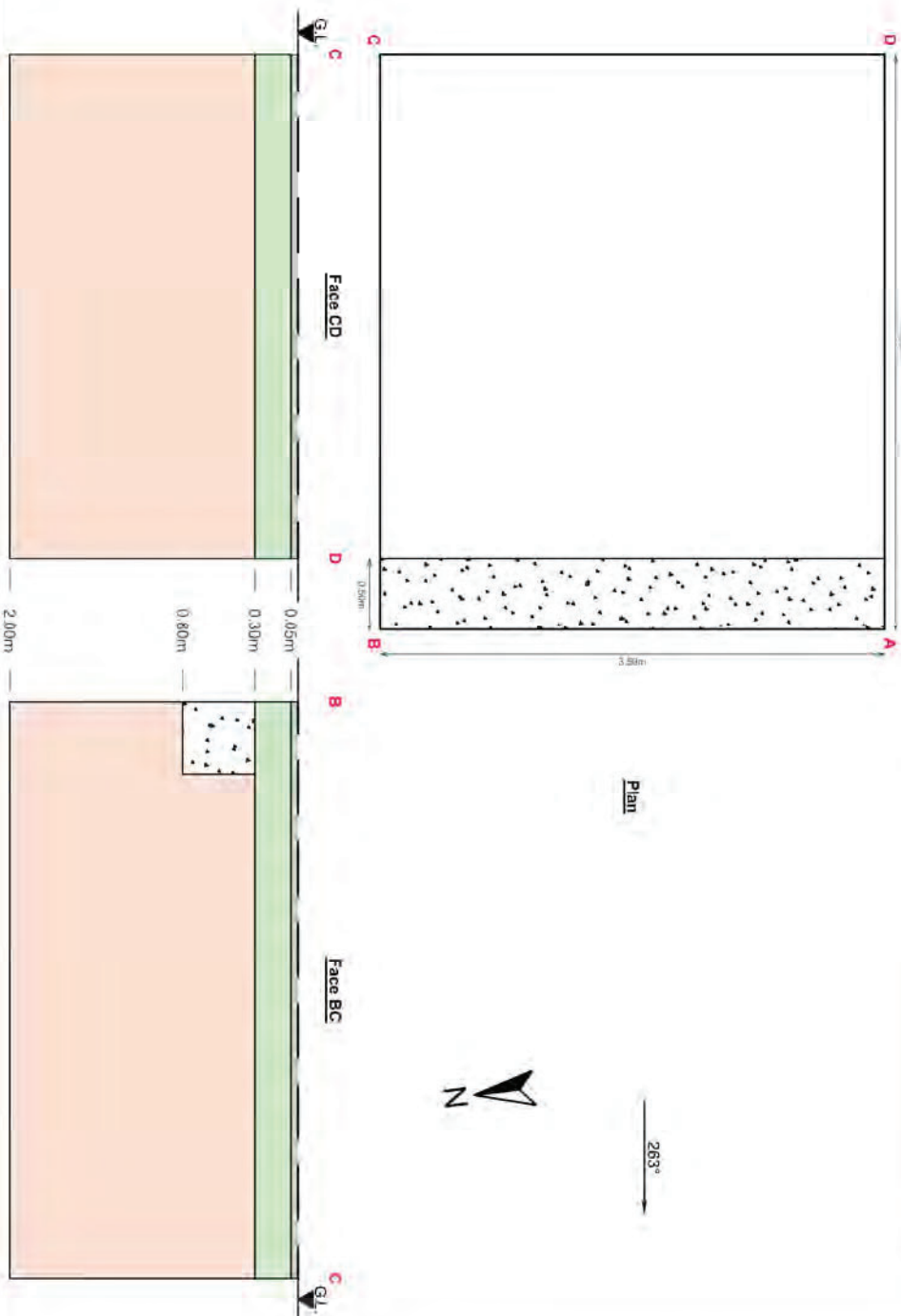
Concrete and tarmac spoil



GINT LIBRARY\_V8\_06.GLB LibVersion: v8\_06\_018 PriVersion: v8\_06 - Core+Full Castleford SI - 008 | Log TRIAL PIT LOG - A4P | 764393 - PROJECT BLUE.GPJ - v8\_06.  
Structural Soils Ltd, Branch Office - Castleford, The Potteries, Pottery Street, Castleford, West Yorkshire, WF10 1NJ. Tel: 01977-552255, Fax: 01977-552299, Web: www.soils.co.uk, Email: ask@soils.co.uk, | 31/05/18 - 15:47 | AJ4 |

Method Used: <b>Machine dug</b>	Plant Used: <b>13 Ton Tracked Excavator</b>	Logged By: <b>GGoldthorpe</b>	Checked By: <b>PMR</b>	
---------------------------------	---	-------------------------------	------------------------	--





- LEGEND**
- Tarmaccadam
  - Concrete
  - Orangish Sand and Gravel
  - Concrete Beam Foundation

01	23.05.2018	Amendments	MW	AJ	AJ
00	21.02.2018	Trial pit Drawing	MW	AJ	AJ
REV	DATE	DESCRIPTION	BY	CHD	APR
INFORMATION		SCALE	ORIGIN SIZE		
m		1:50	A4		

**STRUCTURAL SOILS**

The Pollenree  
Pollery Street  
Castletford  
WF10 1NL

Tel: 01977 552255  
ask@soils.co.uk  
www.soils.co.uk

CLIENT		Burc Happold
PROJECT		Project Blue
TITLE		Trial Pit Drawings - TPSS2.3
REF/ACC	FIGURE	1
764393		
DRAWING STATUS	REV	01
Final		
SCALE BAR		0 0.5 1 1.5 2 2.5m



Contract: <b>Project Blue</b>			Client: <b>Buro Happold</b>		Trial Pit: <b>TPSS2.4</b>
Contract Ref: <b>764393</b>	Start: <b>17.01.18</b> End: <b>17.01.18</b>	Ground Level (m): <b>6.81</b>	National Grid Co-ordinate: <b>E:333368.3 N:392407.0</b>		Sheet: <b>1 of 4</b>

Samples and In-situ Tests				Water	Backfill	Description of Strata	Depth (Thickness)	Material Graphic Legend
Depth	No	Type	Results					
						MADE GROUND: Light grey to black TARMACADAM containing clasts of subangular to subrounded fine to medium gravel of mixed lithologies.	0.05	
						MADE GROUND: Light grey CONCRETE containing clasts of subangular to subrounded fine to coarse gravel of mixed lithologies. . . . from 0.30m, in southern face brickwork present with drainage channels and pipes. Drainage covered by steel sheeting.	(0.45)	
						MADE GROUND: Orangish-reddish brown SAND and GRAVEL. Sand is fine to coarse. Gravel is subangular to subrounded fine to coarse of sandstone. . . . at 0.80m, eastern face has a large sandstone block protruding into pit and is 0.50m thick laying above 0.15m of concrete. The block is 1.0m wide. Block was excavated during trial pitting.	0.50	
							(1.50)	
							2.00	
						Trial pit terminated at 2.00m depth as water started to seep into pit.		

Plan (Not to Scale)		General Remarks			
		<div>1. Location scanned with CAT and Genny and GPR prior to excavation.</div> <div>2. Trial pit remained stable during excavation.</div> <div>3. Water seepage started at 2.00m</div> <div>4. See trial pit sketches/projections for details of structures in pit.</div> <div>5. On completion, borehole backfilled with arisings.</div>			
		All dimensions in metres		Scale:	1:25
Method Used: <b>Machine dug</b>	Plant Used: <b>13 Ton Tracked Excavator</b>	Logged By: <b>GGoldthorpe</b>	Checked By: <b>PmR</b>		

GINT LIBRARY V8 06.GLB LibVersion: v8.06 018 ProjVersion: v8.06 - Core+Full Castleford SI - 008 | Log TRIAL PIT LOG - A4P | 764393 - PROJECT BLUE.GPJ - v8.06. Structural Soils Ltd, Branch Office - Castleford, The Potteries, Pottery Street, Castleford, West Yorkshire, WF10 1NJ. Tel: 01977-552255, Fax: 01977-552299, Web: www.soils.co.uk, Email: ask@soils.co.uk | 31/05/18 - 15:47 | AJ4 |





Contract: <b>Project Blue</b>			Client: <b>Buro Happold</b>	Trial Pit: <b>TPSS2.4</b>
Contract Ref: <b>764393</b>	Start: <b>17.01.18</b> End: <b>17.01.18</b>	Ground Level (m): <b>6.81</b>	National Grid Co-ordinate: <b>E:333368.3 N:392407.0</b>	Sheet: <b>2 of 4</b>

Northern face



Southern face (brickwork and drainage above)

Method Used: <b>Machine dug</b>	Plant Used: <b>13 Ton Tracked Excavator</b>	Logged By: <b>GGoldthorpe</b>	Checked By: <b>pmr</b>	
---------------------------------	---	-------------------------------	------------------------	--





Contract: <b>Project Blue</b>			Client: <b>Buro Happold</b>		Trial Pit: <b>TPSS2.4</b>
Contract Ref: <b>764393</b>	Start: <b>17.01.18</b> End: <b>17.01.18</b>	Ground Level (m): <b>6.81</b>	National Grid Co-ordinate: <b>E:333368.3 N:392407.0</b>		Sheet: <b>3 of 4</b>

Drainage on top of southern face



Eastern face (with sandstone block present, block excavated during trial pitting)

Method Used: <b>Machine dug</b>	Plant Used: <b>13 Ton Tracked Excavator</b>	Logged By: <b>GGoldthorpe</b>	Checked By: <b>pmr</b>	
---------------------------------	---	-------------------------------	------------------------	--





Contract: <b>Project Blue</b>			Client: <b>Buro Happold</b>		Trial Pit: <b>TPSS2.4</b>
Contract Ref: <b>764393</b>	Start: <b>17.01.18</b> End: <b>17.01.18</b>	Ground Level (m): <b>6.81</b>	National Grid Co-ordinate: <b>E:333368.3 N:392407.0</b>		Sheet: <b>4 of 4</b>

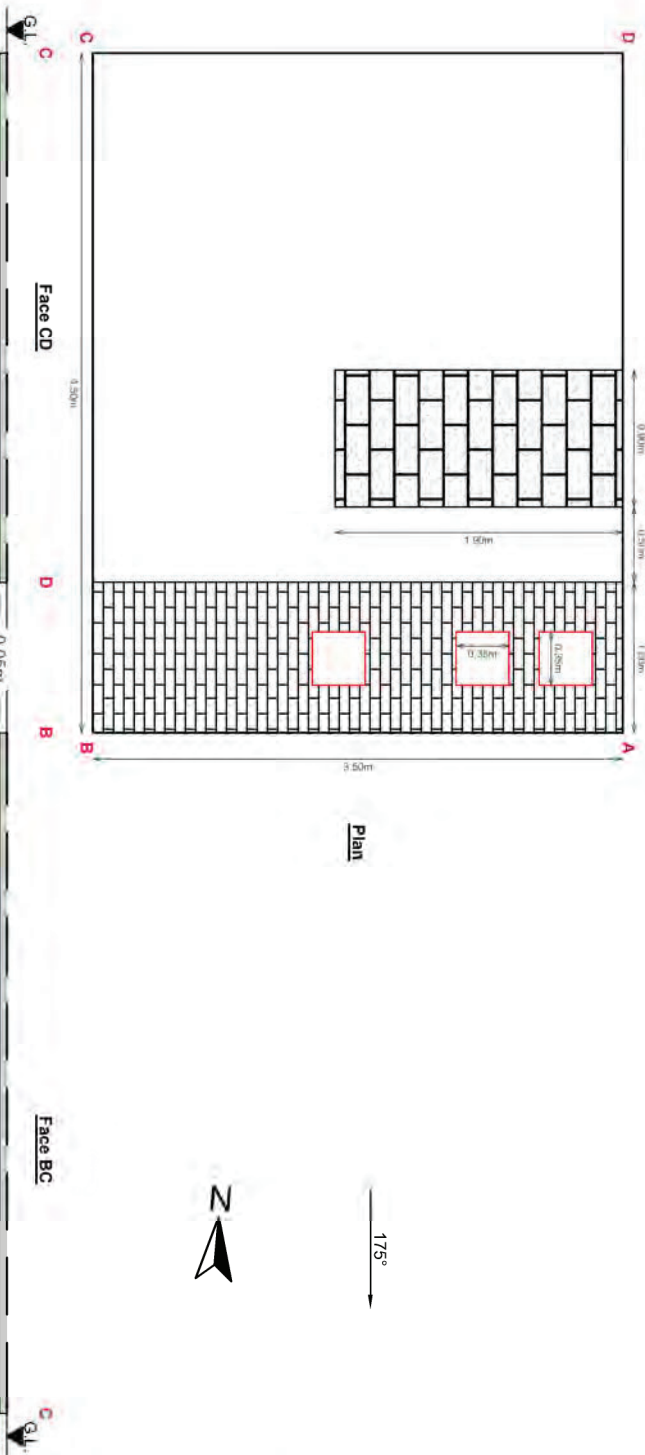
Western face



Spoil

GINT LIBRARY V8 06.GLB LibVersion: v8 06 018 PriVersion: v8 06 - Core+Full Castleford SI - 008 | Log TRIAL PIT LOG - A4P | 764393 - PROJECT BLUE.GPJ - v8 06.  
Structural Soils Ltd, Branch Office - Castleford, The Potteries, Pottery Street, Castleford, West Yorkshire, WF10 1NJ. Tel: 01977-552255, Fax: 01977-552299, Web: www.soils.co.uk, Email: ask@soils.co.uk, | 31/05/18 - 15:48 | AJ4 |

Method Used: <b>Machine dug</b>	Plant Used: <b>13 Ton Tracked Excavator</b>	Logged By: <b>GGoldthorpe</b>	Checked By: <b>pmr</b>	
---------------------------------	---	-------------------------------	------------------------	--



01	23.05.2018	Amendments	MW	AJ	AJ
00	21.02.2018	Trial 2: Drawing	MW	AJ	AJ
REV	DATE	DESCRIPTION	BY	CHD	APR
DIMENSION			SCALE		
M		1:50	A4		



**STRUCTURAL SOILS**

The Pollerres  
Pottery Store  
Westerford  
Wiltshire

Tel: 01977 552255  
ask@soils.co.uk  
www.soils.co.uk

CLIENT		Burt Happold	
PROJECT		Project Blue	
TITLE		Trial Pit Drawings - TPSS2.4	
NO. IN SET	FIGURE		
764393	1		
DRAWING STATUS	REV		
Final	01		
SCALE BAR			

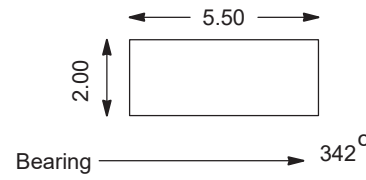







Contract: <b>Project Blue</b>			Client: <b>Buro Happold</b>		Trial Pit: <b>TPSS2.5</b>
Contract Ref: <b>764393</b>	Start: <b>18.01.18</b> End: <b>18.01.18</b>	Ground Level (m): <b>6.75</b>	National Grid Co-ordinate: <b>E:333354.7 N:392414.8</b>		Sheet: <b>1 of 4</b>

Samples and In-situ Tests				Water	Backfill	Description of Strata	Depth (Thickness)	Material Graphic Legend
Depth	No	Type	Results					
						MADE GROUND: Light grey to black TARMACADAM containing clasts of subrounded fine to medium gravel of mixed lithologies.	0.05	
						MADE GROUND: Light grey CONCRETE containing clasts of subangular to subrounded fine to coarse gravel of mixed lithologies.	0.20	
						MADE GROUND: Light grey granite COBBLES (0.10x0.15x0.15)	0.35	
						MADE GROUND: Orangish reddish brown SAND and GRAVEL. Sand is fine to coarse. Gravel is subrounded to subangular fine to coarse of sandstone.		
						... at 0.95m, In western face of pit, a concrete foundation supporting warehouse wall and pile cap. Cap is 1.00m wide (see trial pit sketches/projections for details of structures). Beam foundation has corrugated appearance- presumed corrugated iron used as shuttering.	(1.15)	
							1.50	
						Trial pit terminated at 1.50m depth.		

Plan (Not to Scale)		General Remarks			
		<div>1. Location scanned with CAT and Genny and GPR prior to excavation.</div> <div>2. Trial pit remained dry and stable during excavation.</div> <div>3. See trial pit sketches/projections for details on structures in pit.</div> <div>4. On completion, borehole backfilled with arisings.</div>			
		All dimensions in metres		Scale: <b>1:25</b>	
Method Used: <b>Machine dug</b>	Plant Used: <b>13 Ton Tracked Excavator</b>	Logged By: <b>GGoldthorpe</b>	Checked By: <b>PmR</b>		

GINT LIBRARY V8 06 018 ProjVersion: v8\_06 - Core+Full Castleford SI - 008 | Log TRIAL PIT LOG - A4P | 764393 - PROJECT BLUE.GPJ - v8\_06.  
Structural Soils Ltd, Branch Office - Castleford, The Potteries, Pottery Street, Castleford, West Yorkshire, WF10 1NJ. Tel: 01977-552255, Fax: 01977-552299, Web: www.soils.co.uk, Email: ask@soils.co.uk | 31/05/18 - 15:48 | A/J4 |



Contract: <b>Project Blue</b>			Client: <b>Buro Happold</b>		Trial Pit: <b>TPSS2.5</b>
Contract Ref: <b>764393</b>	Start: <b>18.01.18</b> End: <b>18.01.18</b>	Ground Level (m): <b>6.75</b>	National Grid Co-ordinate: <b>E:333354.7 N:392414.8</b>		Sheet: <b>2 of 4</b>

Northern face



Western face, showing foundation and possible pile cap

Method Used: <b>Machine dug</b>	Plant Used: <b>13 Ton Tracked Excavator</b>	Logged By: <b>GGoldthorpe</b>	Checked By: <b>pmr</b>	
---------------------------------	---	-------------------------------	------------------------	--





Contract: <b>Project Blue</b>			Client: <b>Buro Happold</b>		Trial Pit: <b>TPSS2.5</b>
Contract Ref: <b>764393</b>	Start: <b>18.01.18</b> End: <b>18.01.18</b>	Ground Level (m): <b>6.75</b>	National Grid Co-ordinate: <b>E:333354.7 N:392414.8</b>		Sheet: <b>3 of 4</b>

Southern face



Eastern face

Method Used: <b>Machine dug</b>	Plant Used: <b>13 Ton Tracked Excavator</b>	Logged By: <b>GGoldthorpe</b>	Checked By: <b>pmr</b>	
---------------------------------	---	-------------------------------	------------------------	--



Contract: <b>Project Blue</b>			Client: <b>Buro Happold</b>		Trial Pit: <b>TPSS2.5</b>
Contract Ref: <b>764393</b>	Start: <b>18.01.18</b> End: <b>18.01.18</b>	Ground Level (m): <b>6.75</b>	National Grid Co-ordinate: <b>E:333354.7 N:392414.8</b>		Sheet: <b>4 of 4</b>

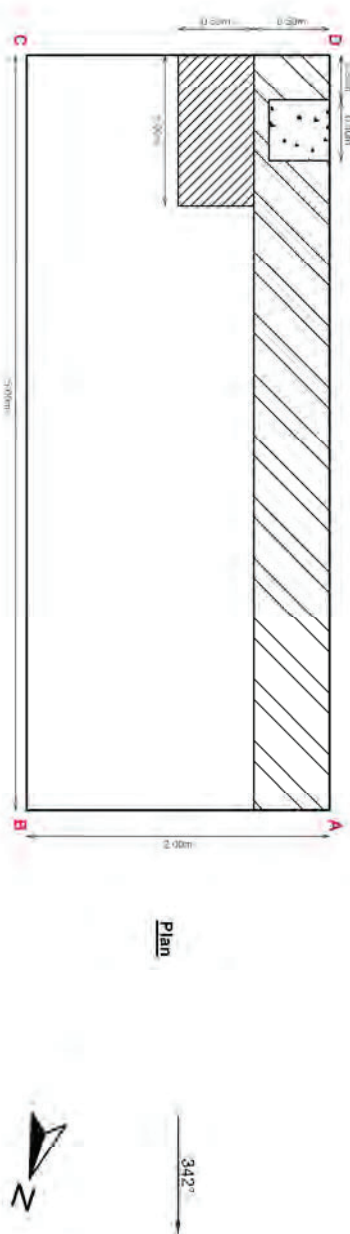
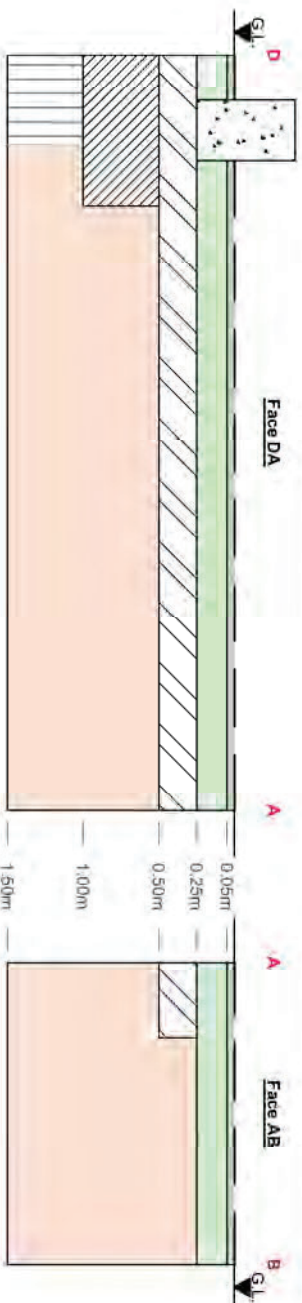
Spoil



GINT LIBRARY\_V8\_06.GLB LibVersion: v8\_06 018 PriVersion: v8\_06 - Core+Full Castleford SI - 008 | Log TRIAL PIT LOG - A4P | 764393 - PROJECT BLUE.GPJ - v8\_06.  
Structural Soils Ltd, Branch Office - Castleford, The Potteries, Pottery Street, Castleford, West Yorkshire, WF10 1NJ. Tel: 01977-552255, Fax: 01977-552299, Web: www.soils.co.uk, Email: ask@soils.co.uk, | 31/05/18 - 15:49 | AJ4 |

Method Used: <b>Machine dug</b>	Plant Used: <b>13 Ton Tracked Excavator</b>	Logged By: <b>GGoldthorpe</b>	Checked By: <b>PMR</b>	
---------------------------------	---	-------------------------------	------------------------	--





Plan



- LEGEND**
- Tarmacadam
  - Concrete
  - Orangish Sand and Gravel
  - Concrete Column
  - Ring Beam Foundation
  - Possible Pile Cap
  - Possible Pile

01	23.05.2018	Amendments	MW	AJ	AJ
00	21.02.2018	Trial pit Drawing	MW	AJ	AJ
REV	DATE	DESCRIPTION	BY	CHD	APR
INTERIM		SCALE	ORIGIN SIZE		
m		1:50	A4		

**STRUCTURAL SOILS**

The Pollenree  
Pollery Street  
Castletford  
WF10 1NL

Tel: 01977 552255  
ask@soils.co.uk  
www.soils.co.uk

CLIENT		Burc Happold	
PROJECT		Project Blue	
TITLE		Trial Pit Drawings - TPSS2.5	
REF NO.	764393	FIGURE	1
DRAWING STATUS	Final	REV	01
SCALE BAR		0 0.5 1 1.5 2 2.5m	



# STRUCTURAL SOILS

## SUMMARY TABLE OF GROUND LEVELS AND CO-ORDINATES AT EXPLORATORY HOLE LOCATIONS

Contract: <b>Project Blue</b>		Client: <b>Buro Happold</b>		Contract Ref: <b>764393</b>
Exploratory Position ID	Grid Co-Ordinates		Ground Level (m)	Hole Type Codes
	Eastings (m)	Northings (m)		
BH1	333601.4	392565.4	6.93	RO
BH101	333259.5	392529.6	6.55	CC+IP+DS+RC
BH102	333278.4	392411.3	6.73	CC+IP+DS+RC
BH102A	333278.3	392411.8	6.72	RO
BH103	333298.3	392491.8	-3.16	DS+RC
BH104	333338.4	392535.5	-1.88	DS+RC
BH105	333327.2	392443.9	-2.86	DS+RC
BH106	333375.7	392522.9	-2.62	DS+RC
BH107	333381.5	392452.6	-2.88	DS+RC
BH108	333401.2	392408.7	6.81	CC+IP+DS+RC
BH108A	333402.2	392408.9	6.80	RO
BH109	333457.1	392569.5	6.63	IP+DS+RC+DS+RC
BH110	333458.7	392487.8	-2.65	DS+RC
BH111	333528.5	392567.7	6.70	CC+IP+DS+RC
BH112	333549.3	392515.5	-2.45	DS+RC
BH113	333544.3	392470.8	-2.68	DS
BH113A	333553.0	392472.0	-2.98	DS+RC
BH114	333502.4	392415.2	6.76	CC+IP+DS+RC
OH101	333368.2	392383.3	6.82	RO
OH102	333393.5	392565.0	6.71	RO
OH103	333613.1	392465.2	6.81	RO
P101	333391.4	392550.0	6.46	TP
P101A	333395.0	392551.7	6.44	RO+RC
P101B	333394.4	392551.0	6.50	RO
P101C	333390.9	392550.0	6.46	RO+RC
P102	333534.9	392557.1	6.62	TP
P102.1	333532.6	392556.9	6.62	TP
P102A	333537.6	392556.6	6.62	RO
P103A	333405.0	392419.9	6.67	RO+RC
P103B	333403.9	392423.3	6.60	RO+RC
P104A	333502.3	392423.8	6.63	RO+RC
P104B	333502.2	392426.7	6.61	RC

Notes:

Hole type codes: CC = Concrete core, IP = Inspection pit, DS = Dynamic sampling, RC = Rotary Cored, RO = Rotary open hole, TP = Trial Pit/trench







# STRUCTURAL SOILS

## SUMMARY TABLE OF GROUND LEVELS AND CO-ORDINATES AT EXPLORATORY HOLE LOCATIONS

Contract:		Client:		Contract Ref:
<b>Project Blue</b>		<b>Buro Happold</b>		<b>764393</b>
Exploratory Position ID	Grid Co-Ordinates		Ground Level (m)	Hole Type Codes
	Eastings (m)	Northings (m)		
P105	333289.2	392474.4	6.65	TP
P105A	333289.1	392473.2	6.65	RO+RC
P105B	333288.4	392473.1	6.66	RO
P105C	333289.8	392473.2	6.66	RO
P106	333285.9	392521.7	6.67	TP
P106A	333285.7	392521.6	6.63	RO+RC
P106B	333286.6	392521.6	6.61	RO
P106C	333286.2	392521.7	6.64	RO+RC
P106D	333285.0	392521.7	6.70	RO
PAC01A	333300.9	392534.4	---	
PAC01B	333314.0	392516.2	---	
PAC02A	333321.0	392428.1	---	
PAC02B	333313.7	392446.7	---	
PAC03A	333390.6	392452.1	---	
PAC03B	333393.9	392472.7	---	
PAC04A	333420.6	392542.2	---	
PAC04B	333436.3	392543.3	---	
PAC05A	333416.6	392488.7	---	
PAC05B	333456.3	392502.2	---	
PAC06A	333469.8	392458.0	---	
PAC06B	333495.1	392453.6	---	
PAC07A	333591.3	392527.2	---	
PAC07B	333573.3	392537.8	---	
PAC08A	333548.3	392449.7	---	
PAC08B	333555.4	392473.5	---	
TPSS1.1	333393.0	392568.2	6.56	TP
TPSS1.2	333406.0	392568.3	6.57	TP
TPSS1.3	333396.4	392554.7	6.58	TP
TPSS1.4	333387.4	392559.5	6.54	TP
TPSS1.5	333416.3	392560.1	6.55	TP
TPSS2.1	333360.9	392418.2	6.66	TP
TPSS2.2	333377.4	392405.2	6.81	TP

Notes:

Hole type codes: CC = Concrete core, IP = Inspection pit, DS = Dynamic sampling, RC = Rotary Cored, RO = Rotary open hole, TP = Trial Pit/trench





# STRUCTURAL SOILS

## SUMMARY TABLE OF GROUND LEVELS AND CO-ORDINATES AT EXPLORATORY HOLE LOCATIONS

Contract:		Client:		Contract Ref:
Project Blue		Buro Happold		764393
Exploratory Position ID	Grid Co-Ordinates		Ground Level (m)	Hole Type Codes
	Eastings (m)	Northings (m)		
TPSS2.3	333356.2	392409.8	6.80	TP
TPSS2.4	333368.3	392407.0	6.81	TP
TPSS2.5	333354.7	392414.8	6.75	TP

### Notes:



Hole type codes: CC = Concrete core, IP = Inspection pit, DS = Dynamic sampling, RC = Rotary Cored, RO = Rotary open hole, TP = Trial Pit/trench





SUMMARY OF INSTALLATION AND PIEZOMETER CHARACTERISTICS

Exploratory Position ID	Pipe Caption	Cover Level	Pipe Top Level (m)	Ground Level	Length of Pipe (m)	Piezo meter Depth (m)	Response Zone Top (m)	Response Zone Base (m)	Slotted Pipe Top (m)	Slotted Pipe Base (m)	Pipe Internal Diameter (mm)	Targetted Ground	Remarks
BH101	---	---	---	6.55	3.50	---	0.50	3.50	0.50	3.50	50	---	
BH102	---	---	---	6.73	4.50	4.50	0.50	5.50	---	---	19	---	
BH102A	---	---	---	6.72	5.00	---	1.00	5.50	1.00	5.00	35	---	
BH108	---	---	---	6.81	14.00	14.00	12.00	15.00	---	---	19	---	
BH108A	---	---	---	6.80	14.50	---	12.00	15.00	12.50	14.50	35	---	
BH114	---	---	---	6.76	5.00	---	0.50	5.00	4.50	5.00	50	---	
OH101	---	---	---	6.82	3.00	---	0.50	3.00	0.50	3.00	50	---	
OH102	---	---	---	6.71	4.00	---	0.50	4.50	0.50	4.00	50	---	
OH103	---	---	---	6.81	5.50	---	0.50	5.50	0.50	5.50	50	---	

 <b>STRUCTURAL SOILS</b> The Potteries Pottery Street Castleford W. Yorkshire WF10 1NJ	Compiled By		Contract Ref:	
			Date	764393
	Contract:		13.04.18	
Project Blue			Page: 1 of 1	

AGS

## **APPENDIX C - IN-SITU TESTING**

---

- (i) Standard Penetration Test (SPT) Summary Sheet
- (ii) SPT N value versus Elevation Plot
- (iii) Permeability Test Results