



Contract: Project Blue		Client: Buro Happold		Trial Pit: P102
Contract Ref: 764393	Start: 12.12.17 End: 12.12.17	Ground Level (m): 6.62	National Grid Co-ordinate: E:333534.9 N:392557.1	Sheet: 2 of 4

Pit facing north



Eastern face

Method Used: Machine dug	Plant Used: Mini tracked excavator	Logged By: GGoldthorpe	Checked By: pmr	
---------------------------------	---	-------------------------------	------------------------	--



Contract: Project Blue		Client: Buro Happold		Trial Pit: P102
Contract Ref: 764393	Start: 12.12.17 End: 12.12.17	Ground Level (m): 6.62	National Grid Co-ordinate: E:333534.9 N:392557.1	Sheet: 3 of 4

Western face



Northern face of pit

Method Used: Machine dug	Plant Used: Mini tracked excavator	Logged By: GGoldthorpe	Checked By: PMR	
---------------------------------	---	-------------------------------	------------------------	--



Contract: Project Blue		Client: Buro Happold		Trial Pit: P102
Contract Ref: 764393	Start: 12.12.17 End: 12.12.17	Ground Level (m): 6.62	National Grid Co-ordinate: E:333534.9 N:392557.1	Sheet: 4 of 4

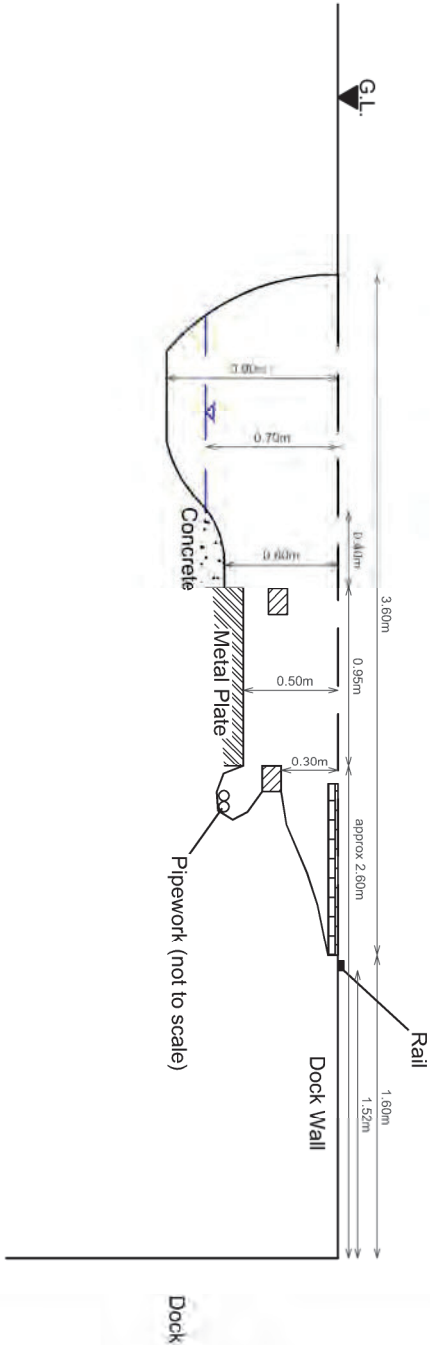
Wooden boards on northern side of pit



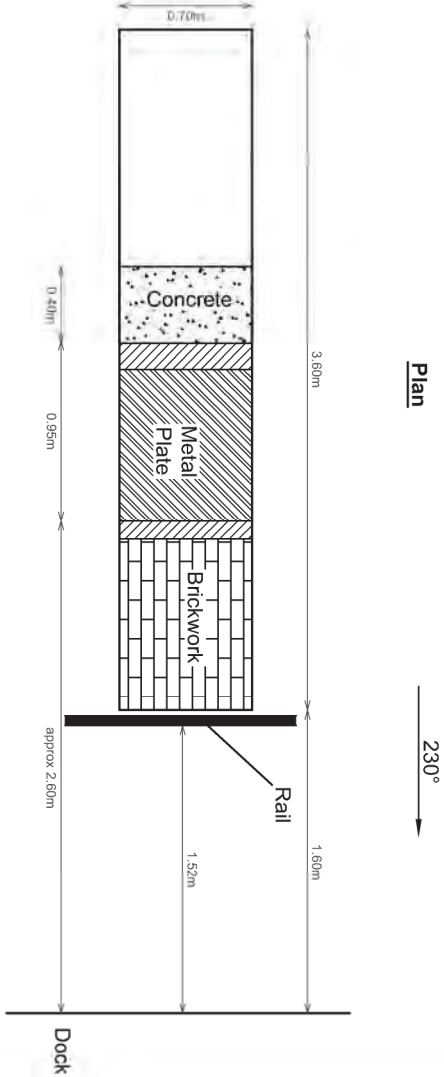
Spoil

Method Used: Machine dug	Plant Used: Mini tracked excavator	Logged By: GGoldthorpe	Checked By: pmr	
---------------------------------	---	-------------------------------	------------------------	--

Cross section



Plan



LEGEND

- Brickwork
- Sleeper
- Groundwater Level

01	23.05.2018	Arrangements	MW	AJ	AJ
00	22.02.2018	Trial Pit Drawing	MW	AJ	AJ
REV	DATE	DESCRIPTION	BY	CHD	APR
DIMENSION		SCALE	ORIGIN SIZE		
m		1:40	A4		

STRUCTURAL SOILS

The Pollenree
Pollery Street
Castletford
WF10 1NL

Tel: 01977 552255
ask@soils.co.uk
www.soils.co.uk

CLIENT		Burc Happold	
PROJECT		Project Blue	
TITLE		Trial Pit Drawings - P102	
INSR NO.	FIGURE		
764393	1		
DRAWING STATUS	REV		
Final	01		
SCALE BAR			





Contract: Project Blue			Client: Buro Happold		Trial Pit: P102.1
Contract Ref: 764393	Start: 13.12.17 End: 13.12.17	Ground Level (m): 6.62	National Grid Co-ordinate: E:333532.6 N:392556.9		Sheet: 1 of 4

Samples and In-situ Tests				Water	Backfill	Description of Strata	Depth (Thickness)	Material Graphic Legend
Depth	No	Type	Results					
0.00-0.50	1	B				MADE GROUND: Loose yellow fine to coarse SAND (Stockpile sand)	0.05	
						MADE GROUND: Rectangular granite 'bricks' average 0.20 x 0.10m in size	0.25	
0.50	102	ES PID	1.2ppm			MADE GROUND: Red brick wall (0.60m width) Western side of the wall exposed is a water filled 'void'/channel depth 1.10m. In central part of pit wall recovered as orange not brown sandy very coarse gravel of red bricks, some concrete and tarmacadam. Sand is coarse of ash and weathered sandstone.	(0.45)	
0.50								
0.70	103	ES PID	1.5ppm			MADE GROUND: Wooden board over 'void'/channel. Inaccessable for sampling.	0.70	
0.70								
							(0.40)	
							1.10	
						Trial pit terminated at 1.10m depth.		

Plan (Not to Scale)		General Remarks			
		<div>1. Trial pit scanned with CAT and Genny and GPR prior to excavation.</div> <div>2. Trial pit remained dry and stable during excavation.</div> <div>3. On completion, borehole backfilled with arisings.</div>			
		All dimensions in metres		Scale: 1:25	
Method Used: Machine dug	Plant Used: Mini tracked excavator	Logged By: GGoldthorpe	Checked By: PmR		

GINT LIBRARY V8 06 018 ProjVersion: v8_06 - Core+Full Castleford SI - 008 | Log TRIAL PIT LOG - A4P | 764393 - PROJECT BLUE.GPJ - v8_06.
Structural Soils Ltd, Branch Office - Castleford: The Potteries, Pottery Street, Castleford, West Yorkshire, WF10 1NJ. Tel: 01977-552255, Fax: 01977-552299, Web: www.soils.co.uk, Email: ask@soils.co.uk | 31/05/18 - 16:23 | A/J4 |



Contract: Project Blue		Client: Buro Happold		Trial Pit: P102.1
Contract Ref: 764393	Start: 13.12.17 End: 13.12.17	Ground Level (m): 6.62	National Grid Co-ordinate: E:333532.6 N:392556.9	Sheet: 2 of 4

Pit facing north



Western face

Method Used: Machine dug	Plant Used: Mini tracked excavator	Logged By: GGoldthorpe	Checked By: pmr	
---------------------------------	---	-------------------------------	------------------------	--



Contract: Project Blue			Client: Buro Happold	Trial Pit: P102.1
Contract Ref: 764393	Start: 13.12.17 End: 13.12.17	Ground Level (m): 6.62	National Grid Co-ordinate: E:333532.6 N:392556.9	Sheet: 3 of 4

Western face



Southern face

Method Used: Machine dug	Plant Used: Mini tracked excavator	Logged By: GGoldthorpe	Checked By: pmr	
---------------------------------	---	-------------------------------	------------------------	--



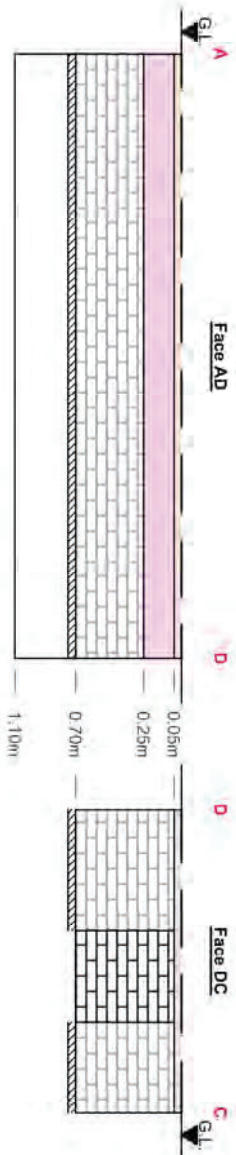
Contract: Project Blue			Client: Buro Happold	Trial Pit: P102.1
Contract Ref: 764393	Start: 13.12.17 End: 13.12.17	Ground Level (m): 6.62	National Grid Co-ordinate: E:333532.6 N:392556.9	Sheet: 4 of 4

Wooden boards and void in northern side of excavation



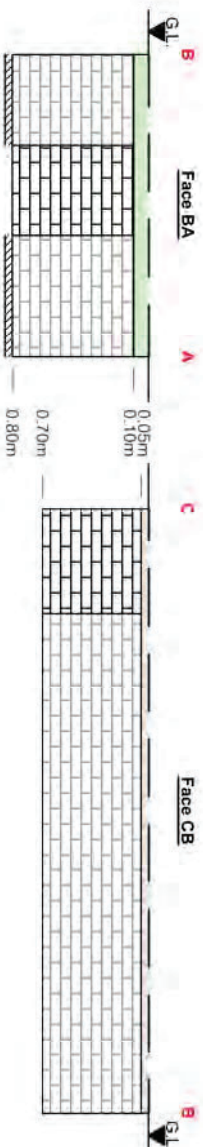
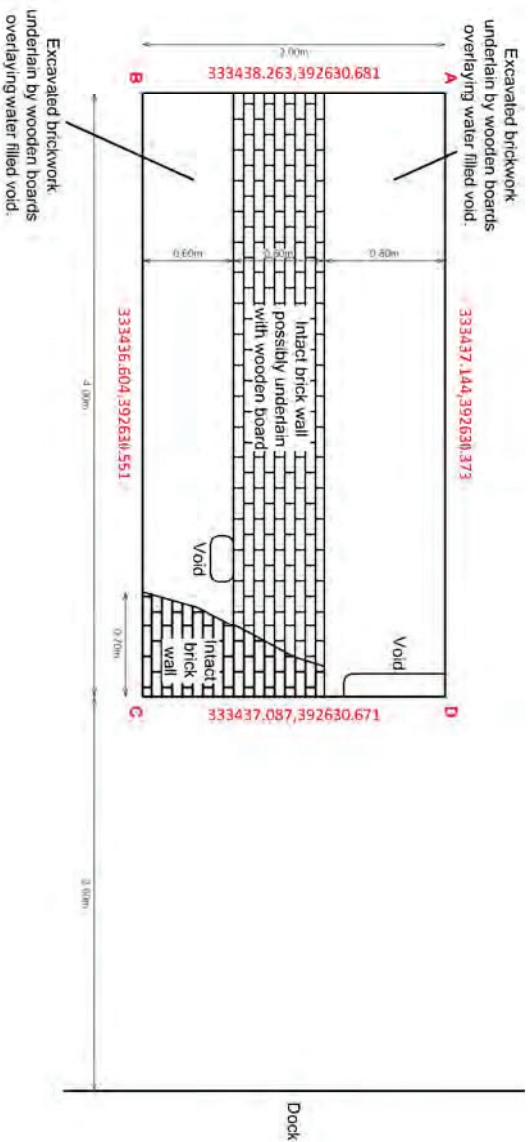
Void on western face

Method Used: Machine dug	Plant Used: Mini tracked excavator	Logged By: GGoldthorpe	Checked By: pmr	
---------------------------------	---	-------------------------------	------------------------	--



230°

Plan



LEGEND

- Granite Cobbles
- Concrete
- Orangish Sand and Gravel
- Intact Brick
- Excavated Brick
- Wooden Board

01	23.05.2018	Arrangements	MW	AJ	AJ
00	22.02.2018	Trial Pit Drawing	MW	AJ	AJ
REV	DATE	DESCRIPTION	BY	CHD	APR
DIMENSION		SCALE	ORIGIN SIZE		
m		1:50	A4		



STRUCTURAL SOILS

The Pollenree
Pollery, Stone
Castletford
WF10 1NL

Tel: 01977 552255
ask@soils.co.uk
www.soils.co.uk

CLIENT		Burc Happold
PROJECT		Project Blue
TITLE		Trial Pit Drawings - P102.1
REF NO.	FIGURE	764393 1
DRAWING STATUS	REV	Final 01
SCALE BAR		0 0.5 1 1.5 2 2.5m



Contract: Project Blue			Client: Buro Happold		Trial Pit: P105
Contract Ref: 764393	Start: 11.12.17 End: 11.12.17	Ground Level (m): 6.65	National Grid Co-ordinate: E:333289.2 N:392474.4		Sheet: 1 of 4

Samples and In-situ Tests				Water	Backfill	Description of Strata	Depth (Thickness)	Material Graphic Legend
Depth	No	Type	Results					
0.00-0.05	1	B				MADE GROUND: Tarmacadam with coarse gravel size rounded clasts of mixed lithologies.	0.05	
						MADE GROUND: Granite stone 0.10 x 0.10m in size.	0.15	
						MADE GROUND: Non reinforced CONCRETE with coarse gravel of cobble sized clasts of mixed lithologies over granite 'stones' (0.40 x 0.20 x 0.20m).	0.30	
0.50	103	ES				MADE GROUND: Non reinforced CONCRETE coarse gravel to cobble sized clasts of mixed lithologies.	0.50	
0.50	2	B						
0.50-1.00	4	B	0.7ppm			MADE GROUND: Orangish reddish brown fine to coarse SAND and GRAVEL of sandstone. Sand is fine to coarse. Sandstone is subrounded low cobble content.		
0.50		PID						
1.00	105	ES						
1.00-2.00	6	B	0.1ppm					
1.00		PID						
1.50	107	ES						
1.50		PID	0.1ppm				(2.20)	
2.00	108	ES						
2.00-2.70	9	B	0.1ppm					
2.00		PID						
2.50	110	ES						
2.50		PID	0.1ppm				2.70	
Trial pit terminated at 2.70m depth.								

Plan (Not to Scale)		General Remarks			
		<div>1. Trial pit scanned with CAT and Genny and GPR prior to excavation.</div> <div>2. No groundwater encountered.</div> <div>3. Trial pit sides 1, 2 and 4 remained stable during excavation. Trial pit abandoned around 2.70m due to collapse of side 3.</div> <div>4. On completion, borehole backfilled with arisings.</div>			
		All dimensions in metres		Scale: 1:25	
Method Used: Machine dug	Plant Used: Mini tracked excavator	Logged By: GGoldthorpe	Checked By: PmR		

GINT LIBRARY V8 06 018 ProjVersion: v8_06 - Core+Full Castleford SI - 008 | Log TRIAL PIT LOG - A4P | 764393 - PROJECT BLUE.GPJ - v8_06.
Structural Soils Ltd, Branch Office - Castleford, The Potteries, Pottery Street, Castleford, West Yorkshire, WF10 1NJ. Tel: 01977-552299, Web: www.soils.co.uk, Email: ask@soils.co.uk | 31/05/18 - 16:24 | A/J4 |



Contract: Project Blue		Client: Buro Happold		Trial Pit: P105
Contract Ref: 764393	Start: 11.12.17 End: 11.12.17	Ground Level (m): 6.65	National Grid Co-ordinate: E:333289.2 N:392474.4	Sheet: 2 of 4

Southern face



Northern face

Method Used: Machine dug	Plant Used: Mini tracked excavator	Logged By: GGoldthorpe	Checked By: pmr	
---------------------------------	---	-------------------------------	------------------------	--



Contract: Project Blue			Client: Buro Happold		Trial Pit: P105
Contract Ref: 764393	Start: 11.12.17 End: 11.12.17	Ground Level (m): 6.65	National Grid Co-ordinate: E:333289.2 N:392474.4		Sheet: 3 of 4

Western face



Eastern face

Method Used: Machine dug	Plant Used: Mini tracked excavator	Logged By: GGoldthorpe	Checked By: pmr	
---------------------------------	---	-------------------------------	------------------------	--



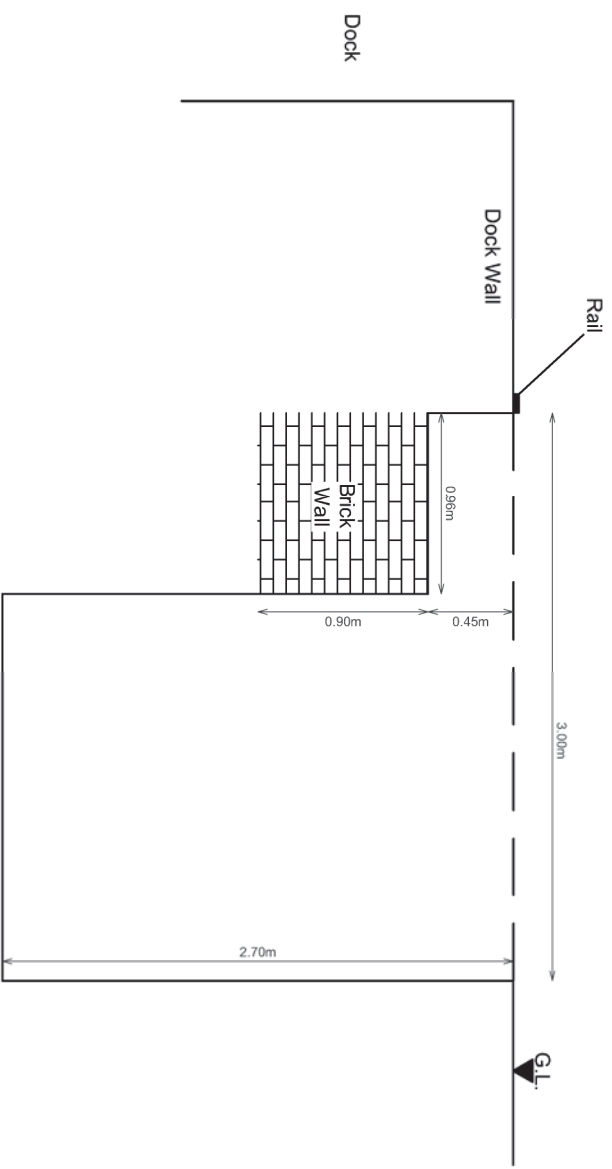
Contract: Project Blue		Client: Buro Happold		Trial Pit: P105
Contract Ref: 764393	Start: 11.12.17 End: 11.12.17	Ground Level (m): 6.65	National Grid Co-ordinate: E:333289.2 N:392474.4	Sheet: 4 of 4

Spoil

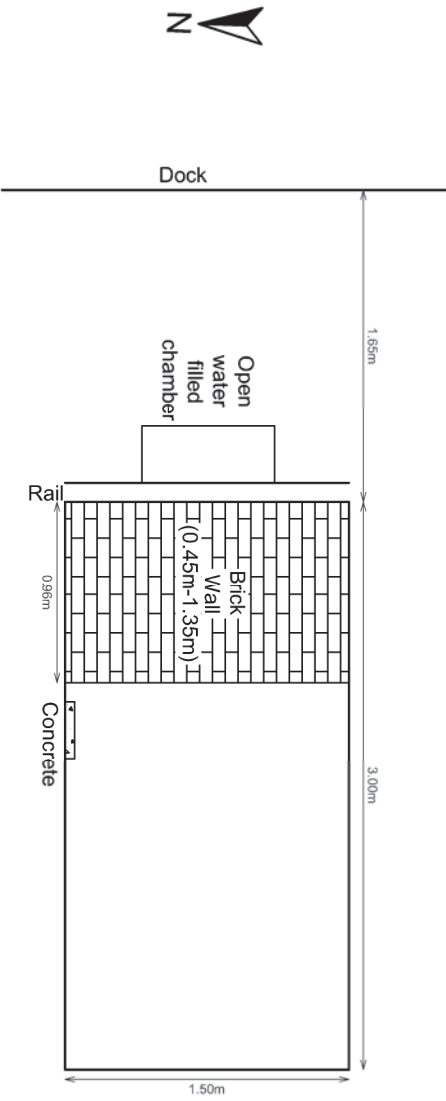


Method Used: Machine dug	Plant Used: Mini tracked excavator	Logged By: GGoldthorpe	Checked By: PMR	
---------------------------------	---	-------------------------------	------------------------	--

Cross section



Plan



LEGEND


01	23.05.2018	Amendments	MW	AJ	AJ
00	22.02.2018	Trial Pit Drawing	MW	AJ	AJ
REV	DATE	DESCRIPTION	BY	CHD	APR

DIMENSION	SCALE	ORIGIN SIZE
m	1:40	A4




STRUTURAL SOILS

The Potteries
Pottery Street
Castletford
WF10 1NJ

Tel: 01977 552255
ask@soils.co.uk
www.soils.co.uk

CLIENT	Burc Happold		
PROJECT	Project Blue		
TITLE	Trial Pit Drawings - P105		
JOB NO	764393	FIGURE	1
DRAWING STATUS	Final	REV	01
SCALE BAR			



Samples and In-situ Tests				Water	Backfill	Description of Strata	Depth (Thick ness)	Material Graphic Legend
Depth	No	Type	Results					
0.50-1.00 0.50 0.50	1 101	B ES PID	0.0ppm			MADE GROUND: TARMACADAM with coarse subrounded gravel of mixed lithologies. MADE GROUND: Extremely weak reinforced CONCRETE with rounded coarse gravel to cobble sized clasts of mixed lithologies. ... 0.55m - 1.25, on eastern part of face 1 a brick wall cobbles. Wall is 0.20m wide comprising 2 thickness red brick. Eastern wall of pit concrete wall, appearing to have been cast into wood. MADE GROUND: Orangish reddish brown sandy coarse subrounded to subangular GRAVEL and cobbles sized areas.	0.05 (0.55) 0.60	
1.00 1.00-2.00 1.00	102 2	ES B PID	0.1ppm					
1.50 1.50	103	ES PID	0.2ppm					
2.00 2.00	104	ES PID	0.1ppm					
2.50 2.50	105	ES PID	0.1ppm					
Trial pit terminated at 3.10m depth.						3.10		

SINT_LIBRARY v8.06.GLB LibVersion: v8.06.018 PriVersion: v8.06-Core+Full Castleford SI - 008 | Log TRIAL PIT LOG - A4P | 764393 - PROJECT BLUE GPU - v8.06.
Structural Soils Ltd, Branch Office - Castleford: The Potteries, Potters Street, Castleford, West Yorkshire, WF10 1NU. Tel: 01977-552255. Fax: 01977-552299. Web: www.soils.co.uk. Email: ask@soils.co.uk. | 31/05/18 - 16:25 AJ4



Contract: Project Blue			Client: Buro Happold		Trial Pit: P106
Contract Ref: 764393	Start: 15.12.17 End: 15.12.17	Ground Level (m): 6.67	National Grid Co-ordinate: E:333285.9 N:392521.7		Sheet: 2 of 3

Northern face



Southern face

Method Used: Machine dug	Plant Used: Mini tracked excavator	Logged By: GGoldthorpe	Checked By: PmR	
---------------------------------	---	-------------------------------	------------------------	--



Contract: Project Blue		Client: Buro Happold		Trial Pit: P106
Contract Ref: 764393	Start: 15.12.17 End: 15.12.17	Ground Level (m): 6.67	National Grid Co-ordinate: E:333285.9 N:392521.7	Sheet: 3 of 3

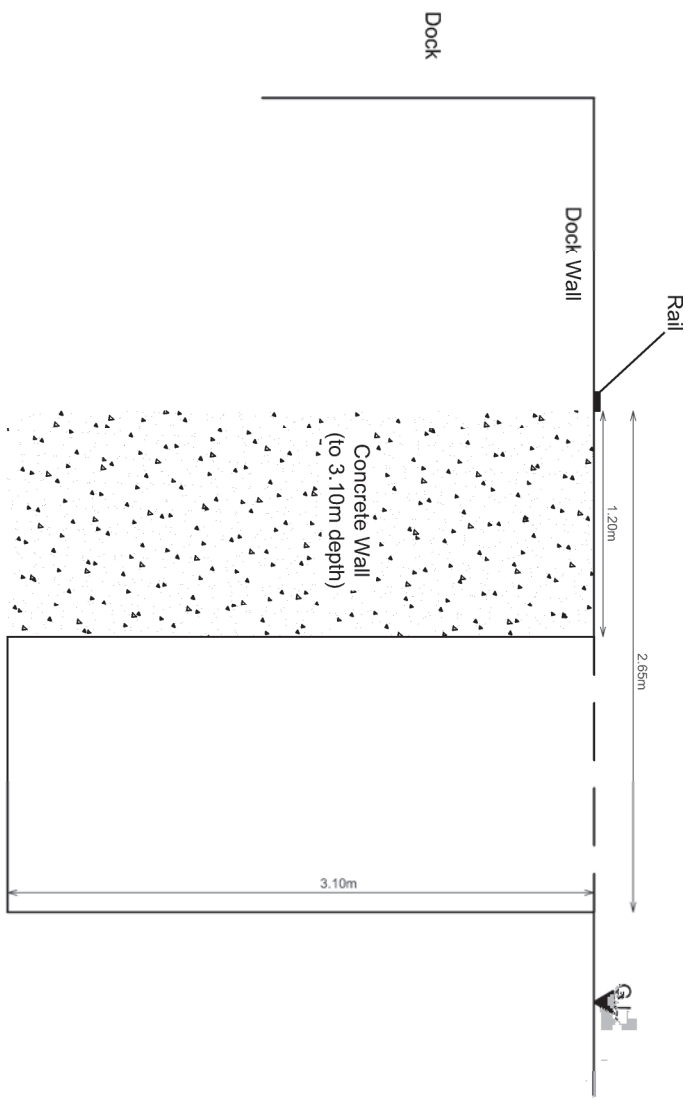
Eastern face



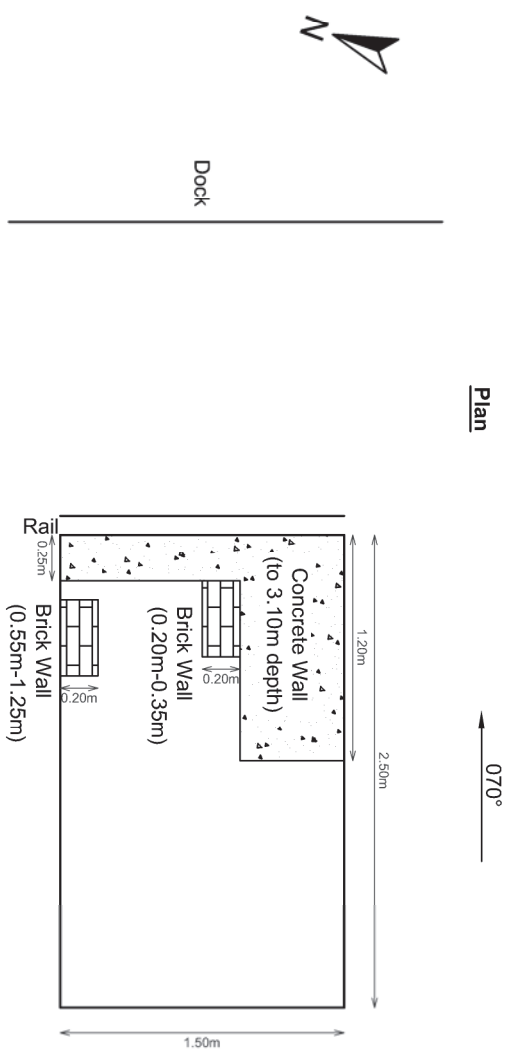
Western face

Method Used: Machine dug	Plant Used: Mini tracked excavator	Logged By: GGoldthorpe	Checked By: PMR	
---------------------------------	---	-------------------------------	------------------------	--

Cross section



Plan



LEGEND

01	23.05.2018	Amendments	MW	AJ	AJ
00	22.02.2018	Trial Pit Drawing	MW	AJ	AJ
REV	DATE	DESCRIPTION	BY	CHD	APR

DIMENSION	SCALE	ORIGIN SIZE
m	1:40	A4



STRUCTURAL SOILS

The Potteries
Pottery Street
Castletford
WF10 1NJ

Tel: 01977 552255
ask@soils.co.uk
www.soils.co.uk

CLIENT	Burc Happold
PROJECT	Project Blue
TITLE	Trial Pit Drawings - P106
JOB NO	764393
DRAWING STATUS	Final
SCALE BAR	0 0.5 1 1.5 2m



Contract: Project Blue			Client: Buro Happold		Trial Pit: TPSS1.1
Contract Ref: 764393	Start: 08.01.18 End: 08.01.18	Ground Level (m): 6.56	National Grid Co-ordinate: E:333393.0 N:392568.2		Sheet: 1 of 4

Samples and In-situ Tests				Water	Backfill	Description of Strata	Depth (Thick ness)	Material Graphic Legend
Depth	No	Type	Results					
						MADE GROUND: Dark brown to black (orangish yellow on a fresh surface) rectangular sandstone blocks (cobbles) (average 30cm x 10cm x 15cm). ... In northern part of excavation 'stepped' brickwork wall at 3 levels: Ground level-0.80m; 0.80-1.25m and 1.25m to bottom of pit. MADE GROUND: Orangish reddish brown slightly clayey SAND and GRAVEL. Gravel is subrounded coarse of sandstone. Medium cobble content also of coarse sandstone. Very strong odour of 'tar' and coarse gravel to cobble size pieces of bitumen excavated in the northern part of the excavation.	0.15	
							(2.05)	
							2.20	
						Trial pit terminated at 2.20m depth.		

Plan (Not to Scale)		General Remarks			
		<ol style="list-style-type: none">1. Trial pit scanned with GPR, CAT and Genny prior to excavation.2. Trial pit started to fill with water at 2.00m.3. Excavation unstable on long faces, leading to moderate collapses.4. Refer to trial pit sketch/projection5. On completion, borehole backfilled with arisings.			
		All dimensions in metres		Scale: 1:25	
Method Used: Machine dug	Plant Used: 13 Ton Tracked Excavator	Logged By: GGoldthorpe	Checked By: PmR		

GINT LIBRARY V8 06.GLB LibVersion: v8.06 018 ProjVersion: v8.06 - Core+Full Castleford SI - 008 | Log TRIAL PIT LOG - A4P | 764393 - PROJECT BLUE.GPJ - v8.06. Structural Soils Ltd, Branch Office - Castleford, The Potteries, Pottery Street, Castleford, West Yorkshire, WF10 1NJ. Tel: 01977-552255, Fax: 01977-552299, Web: www.soils.co.uk, Email: ask@soils.co.uk | 31/05/18 - 15:05 | AJ4 |



Contract: Project Blue			Client: Buro Happold		Trial Pit: TPSS1.1
Contract Ref: 764393	Start: 08.01.18 End: 08.01.18	Ground Level (m): 6.56	National Grid Co-ordinate: E:333393.0 N:392568.2		Sheet: 2 of 4

Whole pit looking northward



Eastern face

Method Used: Machine dug	Plant Used: 13 Ton Tracked Excavator	Logged By: GGoldthorpe	Checked By: pmr	
---------------------------------	---	-------------------------------	------------------------	--



Contract: Project Blue			Client: Buro Happold		Trial Pit: TPSS1.1
Contract Ref: 764393	Start: 08.01.18 End: 08.01.18	Ground Level (m): 6.56	National Grid Co-ordinate: E:333393.0 N:392568.2		Sheet: 3 of 4

Western face



Pit facing southward

Method Used: Machine dug	Plant Used: 13 Ton Tracked Excavator	Logged By: GGoldthorpe	Checked By: pmr	
---------------------------------	---	-------------------------------	------------------------	--



Contract: Project Blue		Client: Buro Happold		Trial Pit: TPSS1.1
Contract Ref: 764393	Start: 08.01.18 End: 08.01.18	Ground Level (m): 6.56	National Grid Co-ordinate: E:333393.0 N:392568.2	Sheet: 4 of 4

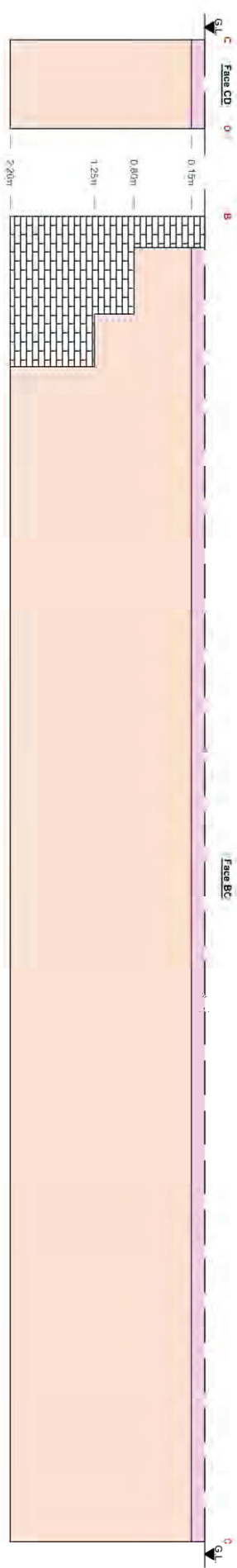
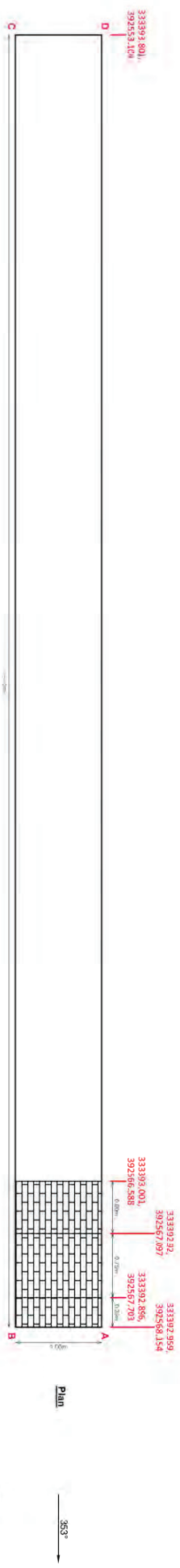
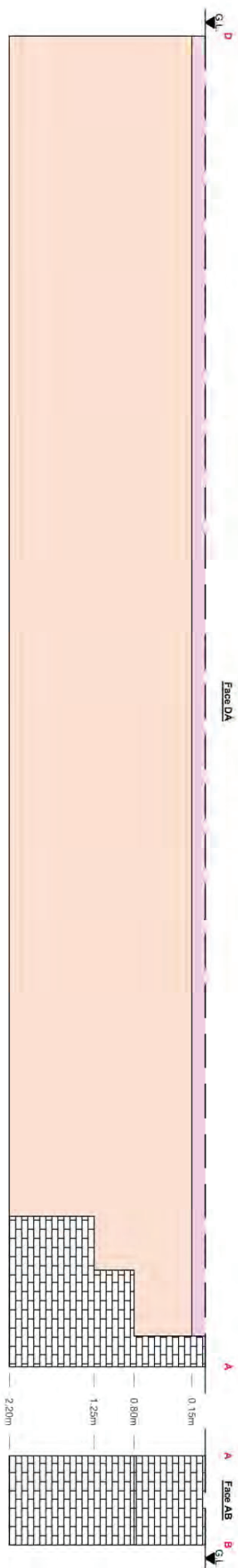
Close up of brickwork in northern end of pit





Spoil




GINT LIBRARY V8 06.GLB LibVersion: v8 06 018 PriVersion: v8 06 - Core+Full Castleford SI - 008 | Log TRIAL PIT LOG - A4P | 764393 - PROJECT BLUE.GPJ - v8 06.
Structural Soils Ltd, Branch Office - Castleford: The Potteries, Pottery Street, Castleford, West Yorkshire, WF10 1NJ. Tel: 01977-552255, Fax: 01977-552299, Web: www.soils.co.uk, Email: ask@soils.co.uk, | 31/05/18 - 15:06 | AJ4 |

Method Used: Machine dug	Plant Used: 13 Ton Tracked Excavator	Logged By: GGoldthorpe	Checked By: pmr	
---------------------------------	---	-------------------------------	------------------------	--



 <div> STRUCTURAL SOILS The Publishers Parkway Street Castleford WF10 1NJ Tel: 01937 823265 info@soils.co.uk www.soils.co.uk </div>				CLIENT	
00 22/02/2018 - MNV AL -				Buro Happold	
REV DATE DESCRIPTION BY CHD APR				DRAWING	
DRAWING SCALE 1:50				PROJECT	
CHD 1:50 A3				Project Blue	
TITLE				Trial P1 Drawings - TPSS1.1	
DRAWING NO 764393				SCALE BAR	
				1:50	

LEGEND

-  Sandstone Cobbles
-  Orangish Sand and Gravel
-  Brick Wall



Contract: Project Blue			Client: Buro Happold		Trial Pit: TPSS1.2
Contract Ref: 764393	Start: 09.01.18 End: 09.01.18	Ground Level (m): 6.57	National Grid Co-ordinate: E:333406.0 N:392568.3		Sheet: 1 of 4

Samples and In-situ Tests				Water	Backfill	Description of Strata	Depth (Thickness)	Material Graphic Legend
Depth	No	Type	Results					
1.50	101	ES				MADE GROUND: Black (yellow on fresh surface) rectangular blocks (cobbles) of sandstone (30cm x 10cm x 15cm) ... In northern part of excavation brickwork structure present from ground level to the bottom of the pit; wall on two levels: ground level-0.90m and 0.90 to bottom of pit.	0.15	
						MADE GROUND: Black fine to coarse subrounded to rounded SAND and GRAVEL with angular fine to coarse gravel sized bitumen. Very strong smell of 'tar' and hydrocarbon. ... at 0.50m, large sandstone block 0.70m x 0.70m.	(0.65) 0.80	
						MADE GROUND: Orangish reddish brown subangular fine to coarse GRAVEL and SAND. Gravel of sandstone.	(1.20)	
						... Water ingress at 2.00m: strongly discoloured with strong hydrocarbon odour. Trial pit terminated at 2.00m depth.	2.00	

Plan (Not to Scale)			General Remarks		
			<ol style="list-style-type: none">1. Trial pit scanned with GPR, CAT and Genny prior to excavation.2. Excavation unstable on all faces during excavation.3. Water seepage at 2.00m.4. On completion, borehole backfilled with arisings.		
All dimensions in metres			Scale: 1:25		
Method Used: Machine dug	Plant Used: 13 Ton Tracked Excavator		Logged By: GGoldthorpe	Checked By: PmR	

GINT LIBRARY V8 06 018 ProjVersion: v8_06 - Core+Full Castleford SI - 008 | Log TRIAL PIT LOG - A4P | 764393 - PROJECT BLUE.GPJ - v8_06.
Structural Soils Ltd, Branch Office - Castleford, The Potteries, Pottery Street, Castleford, West Yorkshire, WF10 1NJ. Tel: 01977-552255, Fax: 01977-552299, Web: www.soils.co.uk, Email: ask@soils.co.uk | 31/05/18 - 15:06 | A/J4 |



Contract: Project Blue			Client: Buro Happold		Trial Pit: TPSS1.2
Contract Ref: 764393	Start: 09.01.18 End: 09.01.18	Ground Level (m): 6.57	National Grid Co-ordinate: E:333406.0 N:392568.3		Sheet: 2 of 4

Pit looking northward



Southern face

Method Used: Machine dug	Plant Used: 13 Ton Tracked Excavator	Logged By: GGoldthorpe	Checked By: PMR	
---------------------------------	---	-------------------------------	------------------------	--



Contract: Project Blue			Client: Buro Happold		Trial Pit: TPSS1.2
Contract Ref: 764393	Start: 09.01.18 End: 09.01.18	Ground Level (m): 6.57	National Grid Co-ordinate: E:333406.0 N:392568.3		Sheet: 3 of 4

Eastern face



Western face

Method Used: Machine dug	Plant Used: 13 Ton Tracked Excavator	Logged By: GGoldthorpe	Checked By: pmr	
---------------------------------	---	-------------------------------	------------------------	--



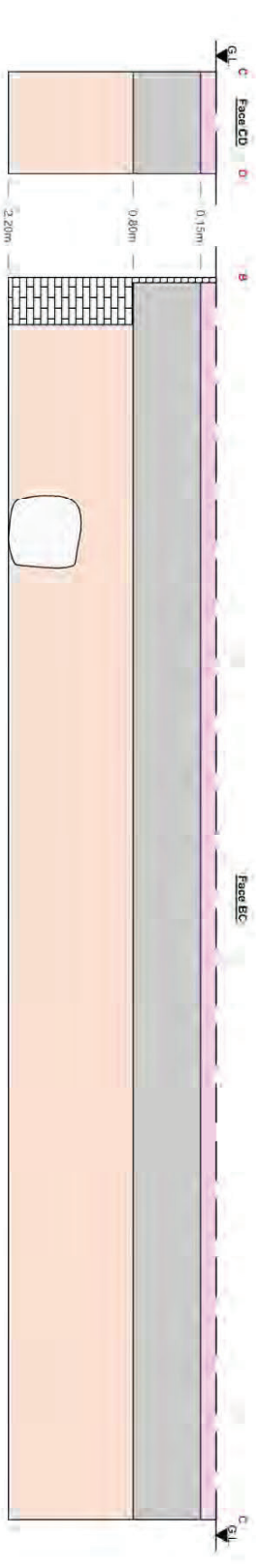
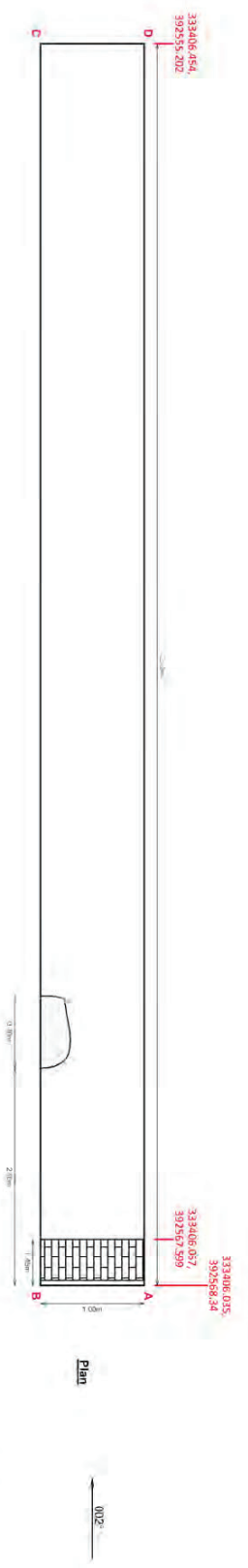
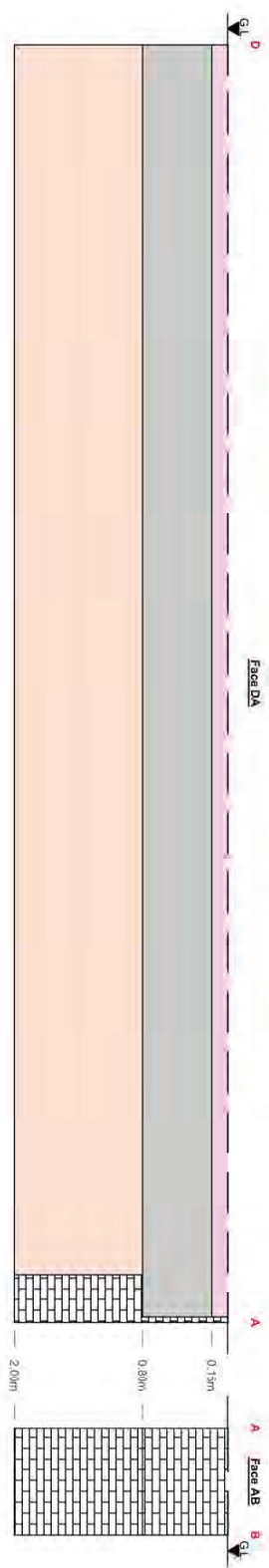
Contract: Project Blue		Client: Buro Happold		Trial Pit: TPSS1.2
Contract Ref: 764393	Start: 09.01.18 End: 09.01.18	Ground Level (m): 6.57	National Grid Co-ordinate: E:333406.0 N:392568.3	Sheet: 4 of 4

Brickwork in northern part of pit



Spoil

Method Used: Machine dug	Plant Used: 13 Ton Tracked Excavator	Logged By: GGoldthorpe	Checked By: pmr	
---------------------------------	---	-------------------------------	------------------------	--



STRUCTURAL SOILS
The Podlimes
Pottery Street
Castelford
WF10 1NJ

Tel: 01977 552255
ask@structsoils.co.uk
www.structsoils.co.uk

00	22.02.2016	-	MW	AJ	=	TITLE		
REV	DATE	DESCRIPTION	BY	CHKD	APPR	PROJECT		
01	22.02.2016	SCALE	BY	CHKD	APPR	Project Blue		
02	22.02.2016	SCALE	BY	CHKD	APPR	Trial Pit Drawings - TPSS1.2		
03	22.02.2016	SCALE	BY	CHKD	APPR	764393		
04	22.02.2016	SCALE	BY	CHKD	APPR	764393		
05	22.02.2016	SCALE	BY	CHKD	APPR	764393		
06	22.02.2016	SCALE	BY	CHKD	APPR	764393		
07	22.02.2016	SCALE	BY	CHKD	APPR	764393		
08	22.02.2016	SCALE	BY	CHKD	APPR	764393		
09	22.02.2016	SCALE	BY	CHKD	APPR	764393		
10	22.02.2016	SCALE	BY	CHKD	APPR	764393		
11	22.02.2016	SCALE	BY	CHKD	APPR	764393		
12	22.02.2016	SCALE	BY	CHKD	APPR	764393		
13	22.02.2016	SCALE	BY	CHKD	APPR	764393		
14	22.02.2016	SCALE	BY	CHKD	APPR	764393		
15	22.02.2016	SCALE	BY	CHKD	APPR	764393		
16	22.02.2016	SCALE	BY	CHKD	APPR	764393		
17	22.02.2016	SCALE	BY	CHKD	APPR	764393		
18	22.02.2016	SCALE	BY	CHKD	APPR	764393		
19	22.02.2016	SCALE	BY	CHKD	APPR	764393		
20	22.02.2016	SCALE	BY	CHKD	APPR	764393		
21	22.02.2016	SCALE	BY	CHKD	APPR	764393		
22	22.02.2016	SCALE	BY	CHKD	APPR	764393		
23	22.02.2016	SCALE	BY	CHKD	APPR	764393		
24	22.02.2016	SCALE	BY	CHKD	APPR	764393		
25	22.02.2016	SCALE	BY	CHKD	APPR	764393		
26	22.02.2016	SCALE	BY	CHKD	APPR	764393		
27	22.02.2016	SCALE	BY	CHKD	APPR	764393		
28	22.02.2016	SCALE	BY	CHKD	APPR	764393		
29	22.02.2016	SCALE	BY	CHKD	APPR	764393		
30	22.02.2016	SCALE	BY	CHKD	APPR	764393		
31	22.02.2016	SCALE	BY	CHKD	APPR	764393		
32	22.02.2016	SCALE	BY	CHKD	APPR	764393		
33	22.02.2016	SCALE	BY	CHKD	APPR	764393		
34	22.02.2016	SCALE	BY	CHKD	APPR	764393		
35	22.02.2016	SCALE	BY	CHKD	APPR	764393		
36	22.02.2016	SCALE	BY	CHKD	APPR	764393		
37	22.02.2016	SCALE	BY	CHKD	APPR	764393		
38	22.02.2016	SCALE	BY	CHKD	APPR	764393		
39	22.02.2016	SCALE	BY	CHKD	APPR	764393		
40	22.02.2016	SCALE	BY	CHKD	APPR	764393		
41	22.02.2016	SCALE	BY	CHKD	APPR	764393		
42	22.02.2016	SCALE	BY	CHKD	APPR	764393		
43	22.02.2016	SCALE	BY	CHKD	APPR	764393		
44	22.02.2016	SCALE	BY	CHKD	APPR	764393		
45	22.02.2016	SCALE	BY	CHKD	APPR	764393		
46	22.02.2016	SCALE	BY	CHKD	APPR	764393		
47	22.02.2016	SCALE	BY	CHKD	APPR	764393		
48	22.02.2016	SCALE	BY	CHKD	APPR	764393		
49	22.02.2016	SCALE	BY	CHKD	APPR	764393		
50	22.02.2016	SCALE	BY	CHKD	APPR	764393		
51	22.02.2016	SCALE	BY	CHKD	APPR	764393		
52	22.02.2016	SCALE	BY	CHKD	APPR	764393		
53	22.02.2016	SCALE	BY	CHKD	APPR	764393		
54	22.02.2016	SCALE	BY	CHKD	APPR	764393		
55	22.02.2016	SCALE	BY	CHKD	APPR	764393		
56	22.02.2016	SCALE	BY	CHKD	APPR	764393		
57	22.02.2016	SCALE	BY	CHKD	APPR	764393		
58	22.02.2016	SCALE	BY	CHKD	APPR	764393		
59	22.02.2016	SCALE	BY	CHKD	APPR	764393		
60	22.02.2016	SCALE	BY	CHKD	APPR	764393		
61	22.02.2016	SCALE	BY	CHKD	APPR	764393		
62	22.02.2016	SCALE	BY	CHKD	APPR	764393		
63	22.02.2016	SCALE	BY	CHKD	APPR	764393		
64	22.02.2016	SCALE	BY	CHKD	APPR	764393		
65	22.02.2016	SCALE	BY	CHKD	APPR	764393		
66	22.02.2016	SCALE	BY	CHKD	APPR	764393		
67	22.02.2016	SCALE	BY	CHKD	APPR	764393		
68	22.02.2016	SCALE	BY	CHKD	APPR	764393		
69	22.02.2016	SCALE	BY	CHKD	APPR	764393		
70	22.02.2016	SCALE	BY	CHKD	APPR	764393		
71	22.02.2016	SCALE	BY	CHKD	APPR	764393		
72	22.02.2016	SCALE	BY	CHKD	APPR	764393		
73	22.02.2016	SCALE	BY	CHKD	APPR	764393		
74	22.02.2016	SCALE	BY	CHKD	APPR	764393		
75	22.02.2016	SCALE	BY	CHKD	APPR	764393		
76	22.02.2016	SCALE	BY	CHKD	APPR	764393		
77	22.02.2016	SCALE	BY	CHKD	APPR	764393		
78	22.02.2016	SCALE	BY	CHKD	APPR	764393		
79	22.02.2016	SCALE	BY	CHKD	APPR	764393		
80	22.02.2016	SCALE	BY	CHKD	APPR	764393		
81	22.02.2016	SCALE	BY	CHKD	APPR	764393		
82	22.02.2016	SCALE	BY	CHKD	APPR	764393		
83	22.02.2016	SCALE	BY	CHKD	APPR	764393		
84	22.02.2016	SCALE	BY	CHKD	APPR	764393		
85	22.02.2016	SCALE	BY	CHKD	APPR	764393		
86	22.02.2016	SCALE	BY	CHKD	APPR	764393		
87	22.02.2016	SCALE	BY	CHKD	APPR	764393		
88	22.02.2016	SCALE	BY	CHKD	APPR	764393		
89	22.02.2016	SCALE	BY	CHKD	APPR	764393		
90	22.02.2016	SCALE	BY	CHKD	APPR	764393		
91	22.02.2016	SCALE	BY	CHKD	APPR	764393		
92	22.02.2016	SCALE	BY	CHKD	APPR	764393		
93	22.02.2016	SCALE	BY	CHKD	APPR	764393		
94	22.02.2016	SCALE	BY	CHKD	APPR	764393		
95	22.02.2016	SCALE	BY	CHKD	APPR	764393		
96	22.02.2016	SCALE	BY	CHKD	APPR	764393		
97	22.02.2016	SCALE	BY	CHKD	APPR	764393		
98	22.02.2016	SCALE	BY	CHKD	APPR	764393		
99	22.02.2016	SCALE	BY	CHKD	APPR	764393		
100	22.02.2016	SCALE	BY	CHKD	APPR	764393		

LEGEND

- ☐ Sandstone Cobbles
- ☐ Black Bitumen Sane and Gravel
- ☐ Orangish Sand and Gravel
- ☐ Brick Wall
- ☐ Sandstone Boulder



Contract: Project Blue			Client: Buro Happold		Trial Pit: TPSS1.3
Contract Ref: 764393	Start: 10.01.18 End: 10.01.18	Ground Level (m): 6.58	National Grid Co-ordinate: E:333396.4 N:392554.7		Sheet: 1 of 4

Samples and In-situ Tests				Water	Backfill	Description of Strata	Depth (Thickness)	Material Graphic Legend
Depth	No	Type	Results					
						MADE GROUND: Reinforced CONCRETE with angular sub to subrounded fine to medium gravel sized clasts of mixed lithologies.	(0.90)	
						MADE GROUND: Reddish orange brown clayey SAND and GRAVEL. Gravel is subrounded to subangular fine to coarse of sandstone. Sand is fine to coarse. Some fine to coarse fragments of bitumen, up to large cobble size. Faint hydrocarbon 'tar' odour.	0.90	
1.50	101	ES					(1.30)	
2.20	1102	ES				Trial pit terminated at 2.20m depth.	2.20	

Plan (Not to Scale)		General Remarks			
		<div>1. Trial pit scanned with GPR, CAT and Genny prior to excavation.</div> <div>2. Water seepage at 2.00m.</div> <div>3. Excavation unstable on all sides, frequent collapses.</div> <div>4. On completion, borehole backfilled with arisings.</div>			
		All dimensions in metres		Scale: 1:25	
Method Used: Machine dug	Plant Used: 13 Ton Tracked Excavator	Logged By: GGoldthorpe	Checked By: PmR		

GINT LIBRARY V8 06 018 LibVersion: v8 06 - Core+Full Castleford SI - 008 | Log TRIAL PIT LOG - A4P | 764393 - PROJECT BLUE.GPJ - v8 06.
Structural Soils Ltd, Branch Office - Castleford, The Potteries, Pottery Street, Castleford, West Yorkshire, WF10 1NJ. Tel: 01977-552255, Fax: 01977-552299, Web: www.soils.co.uk, Email: ask@soils.co.uk | 31/05/18 - 15:08 | A/J4 |



Contract: Project Blue		Client: Buro Happold		Trial Pit: TPSS1.3
Contract Ref: 764393	Start: 10.01.18 End: 10.01.18	Ground Level (m): 6.58	National Grid Co-ordinate: E:333396.4 N:392554.7	Sheet: 2 of 4

Northern face



Southern face

Method Used: Machine dug	Plant Used: 13 Ton Tracked Excavator	Logged By: GGoldthorpe	Checked By: PMR	
---------------------------------	---	-------------------------------	------------------------	--



Contract: Project Blue		Client: Buro Happold		Trial Pit: TPSS1.3
Contract Ref: 764393	Start: 10.01.18 End: 10.01.18	Ground Level (m): 6.58	National Grid Co-ordinate: E:333396.4 N:392554.7	Sheet: 3 of 4

Western face



Eastern face

Method Used: Machine dug	Plant Used: 13 Ton Tracked Excavator	Logged By: GGoldthorpe	Checked By: pmr	
---------------------------------	---	-------------------------------	------------------------	--



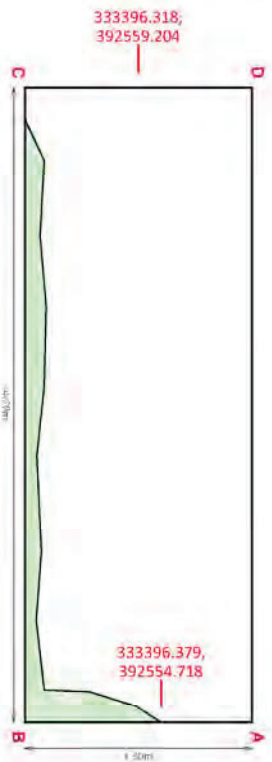
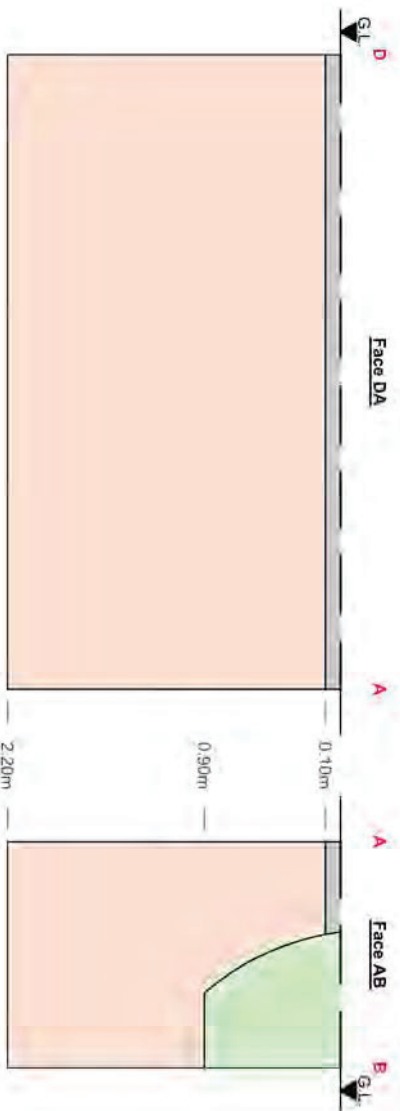
Contract: Project Blue			Client: Buro Happold		Trial Pit: TPSS1.3
Contract Ref: 764393	Start: 10.01.18 End: 10.01.18	Ground Level (m): 6.58	National Grid Co-ordinate: E:333396.4 N:392554.7		Sheet: 4 of 4

Spoil



GINT LIBRARY_V8_06.GLB LibVersion: v8_06_018 PriVersion: v8_06 - Core+Full Castleford SI - 008 | Log TRIAL PIT LOG - A4P | 764393 - PROJECT BLUE.GPJ - v8_06.
Structural Soils Ltd, Branch Office - Castleford, The Potteries, Pottery Street, Castleford, West Yorkshire, WF10 1NJ. Tel: 01977-552255, Fax: 01977-552299, Web: www.soils.co.uk, Email: ask@soils.co.uk, | 31/05/18 - 15:09 | AJ4 |

Method Used: Machine dug	Plant Used: 13 Ton Tracked Excavator	Logged By: GGoldthorpe	Checked By: PMR	
---------------------------------	---	-------------------------------	------------------------	--



Plan



348°

LEGEND

- Stockpile Sand
- Concrete
- Orangish Sand and Gravel

01	23.05.2018	Amendments	MW	AJ	AJ
00	21.02.2018	Trial Pit Drawing	MW	AJ	AJ
REV	DATE	DESCRIPTION	BY	CHD	APR
INTERIM		SCALE	ORIGIN SIZE		
m		1:50	A4		

STRUCTURAL SOILS

The Pollenree
Pottery Street
Castletford
WF10 1NL

Tel: 01977 552255
ask@soils.co.uk
www.soils.co.uk

Burc Happold

Project Blue

Trial Pit Drawings - TPSS1.3

764393 1

Final 01





Contract: Project Blue			Client: Buro Happold		Trial Pit: TPSS1.4
Contract Ref: 764393	Start: 12.01.18 End: 12.01.18	Ground Level (m): 6.54	National Grid Co-ordinate: E:333387.4 N:392559.5		Sheet: 1 of 4

Samples and In-situ Tests				Water	Backfill	Description of Strata	Depth (Thickness)	Material Graphic Legend
Depth	No	Type	Results					
0.00-1.50	101	ES				MADE GROUND: Greyish yellow rectangular to square sandstone blocks (0.10m x 0.10m x 0.15m).	0.15	
						MADE GROUND: On western face brick work is present to 1.00m depth with southern faces having hard angular shiny black bitumen present to 0.30m. Metallic piping/cablings found and excavatd at 0.30m. A concrete block also in centre of pit; dimensions visible 0.70m x 1.00m.	(0.85)	
							1.00	
						MADE GROUND: Orangish reddish brown fine to coarse SAND and GRAVEL. Gravel is subrounded of sandstone. Some course angular gravel of bitumen.	(1.25)	
							2.25	
						Trial pit terminated at 2.25m depth.		

Plan (Not to Scale)		General Remarks			
		<ol style="list-style-type: none">1. Trial pit scanned with GPR, CAT and Genny prior to excavation.2. Trial pit started to fill with water at 2.00m.3. Excavation unstable on all sides.4. Sides of trial pit vary in structures present.5. On completion, borehole backfilled with arisings.			
		All dimensions in metres		Scale:	1:25
Method Used: Machine dug	Plant Used: 13 Ton Tracked Excavator	Logged By: GGoldthorpe	Checked By: PmR		

GINT LIBRARY V8 06.GLB LibVersion: v8.06 018 ProjVersion: v8.06 - Core+Full Castleford SI - 008 | Log TRIAL PIT LOG - A4P | 764393 - PROJECT BLUE.GPJ - v8.06. Structural Soils Ltd, Branch Office - Castleford, The Potteries, Pottery Street, Castleford, West Yorkshire, WF10 1NJ. Tel: 01977-552255, Fax: 01977-552299, Web: www.soils.co.uk, Email: ask@soils.co.uk | 31/05/18 - 15:09 | AJ4 |