

BRAMLEY-MOORE HYDRAULIC ACCUMULATION TOWER		
LOC'N	DEFECT #	DEFECT DESCRIPTION
OFFICE OVER BOILER	1	West elevation drop in arch validated from loss of mortar not move in abutments (see photo)
	2	North elevation drop in arch validated. Coarse cracking up both sides internally, including spandrel below
	3	East elevation drop in arch validated. Coarse cracking up both sides internally, including spandrel below
	4	Window on chamfer at roof access coarsely cracked masonry spandrels below & overhead
	5	South face openings exhibit no structural defect of note internally
	6	Floor rotting, loss of boards. Joists appear adequate but will continue to rot. Roof failed



Bramley Moore Dock
Hydraulic Accumulation Tower
Visual Condition Appraisal - Update
Drawing: 75808-CUR-00-XX-DR-S-107
Date Prepared: 15/05/2020



1

2

3

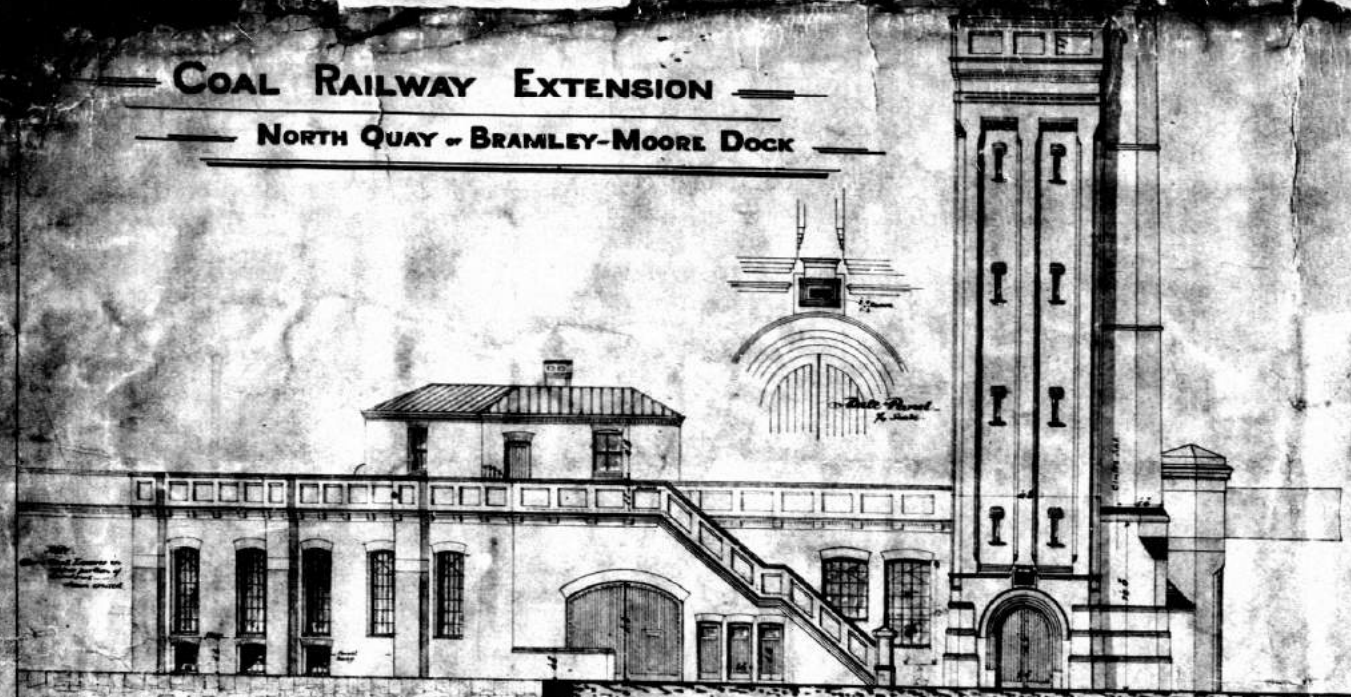
4



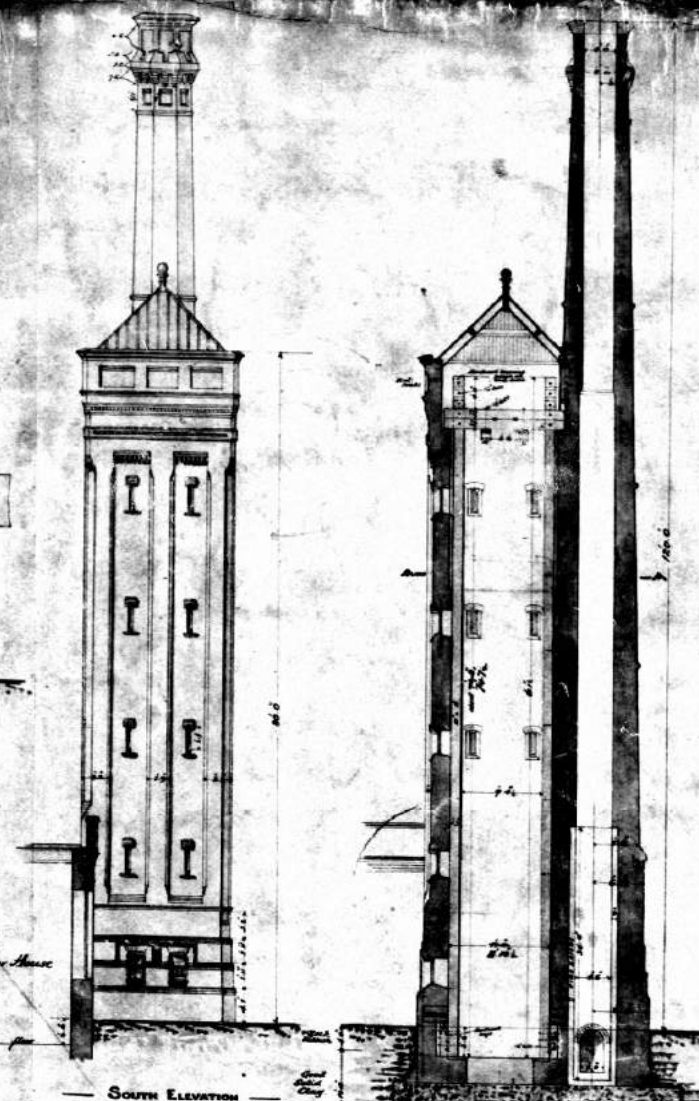
Appendix B: Historic Record Drawing

COAL RAILWAY EXTENSION

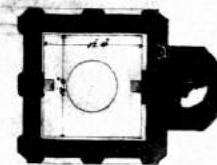
NORTH QUAY - BRAMLEY-MOORE DOCK



EAST ELEVATION



SOUTH ELEVATION



PLAN OF TOWER & CHIMNEY



PLAN OF OFFICES

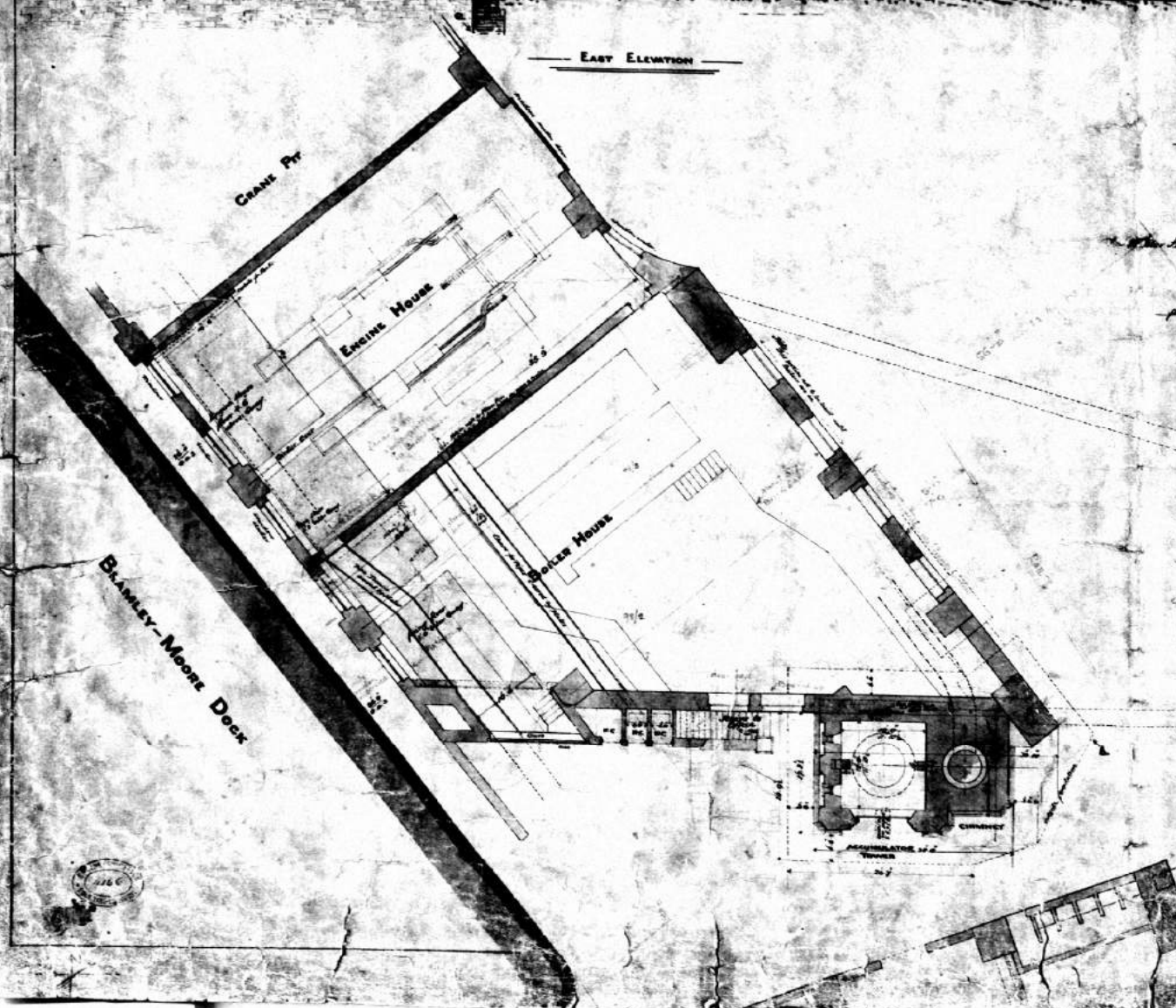
UPPER LEVEL



PLAN OF OFFICES

LOWER LEVEL

SECTION
ACCUMULATOR TOWER & CHIMNEY



BRAMLEY-MOORE DOCK

4166

Appendix C: Historic England Listing Entry

Name: HYDRAULIC ENGINE HOUSE AT BRAMLEY MOORE DOCK

List Entry Summary:

This building is listed under the Planning (Listed Buildings and Conservation Areas) Act 1990 as amended for its special architectural or historic interest.

List entry Number: 1072981

Grade: II

Details:

Engine house, accumulator tower and truncated octagonal chimney. 1883. Common brick with red brick dressings, slate roof. Round-headed windows and entrances; pyramidal roof to accumulator tower; chimney cap missing.

Appendix D: Matterport Survey QR Code and Web Link



<https://my.matterport.com/show/?m=FBjXgzR1P3z>

Appendix E: Significant Residual Hazards Identified

A preliminary list of significant residual hazards identified is noted below.

The list is non-exhaustive, and will be developed further into a formal CDM document during the next stage of detailed design development.

- Live HV Electrical Switch Room located within the building at ground floor on the North side.
- Potential presence of Asbestos containing materials.
- Unprotected dock edge and open water to the South side of the building.
- Potential for loose materials (roof tiles, bricks, mortar, roof timbers, ancillary lighting and bracketry etc.) to fall to ground from height.
- Localised collapse of rotten and unstable timber roofs to the Main Tower and its SW Extension, and to the Office Block on the Boiler House roof, with associated destabilising of wall heads locally.
- Potential voids below ground floor (pits, chutes, undocumented partial basements etc.) covered over with rotten flooring.
- Extensive infestation with Pigeons and associated guano, plus potential for further vermin such as rats or mice.
- Potential trespass into building, and associated drug paraphernalia or other contamination.

Our Locations

Birmingham

2 The Wharf
Bridge Street
Birmingham B1 2JS
T. 0121 643 4694
birmingham@curtins.com

Bristol

Quayside
40-58 Hotwell Road
Bristol BS8 4UQ
T. 0117 302 7560
bristol@curtins.com

Cardiff

3 Cwrt-y-Parc
Earlswood Road
Cardiff
CF14 5GH
T. 029 2068 0900
cardiff@curtins.com

Douglas

Varley House
29-31 Duke Street
Douglas
Isle of Man IM1 2AZ
T. 01624 624 585
douglas@curtins.com

Edinburgh

1a Belford Road
Edinburgh
EH4 3BL
T. 0131 225 2175
edinburgh@curtins.com

Kendal

28 Lowther Street
Kendal
Cumbria LA9 4DH
T. 01539 724 823
kendal@curtins.com

Leeds

Rose Wharf
Ground Floor
Leeds L29 8EE
T. 0113 274 8509
leeds@curtins.com

Liverpool

Curtin House
Columbus Quay
Riverside Drive
Liverpool L3 4DB
T. 0151 726 2000
liverpool@curtins.com

London

40 Compton Street
London EC1V 0BD
T. 020 7324 2240
london@curtins.com

Manchester

Merchant Exchange
17-19 Whitworth Street West
Manchester M1 5WG
T. 0161 236 2394
manchester@curtins.com

Nottingham

56 The Ropewalk
Nottingham
NG1 5DW
T. 0115 941 5551
nottingham@curtins.com