

Scale 1:5,000



Scale 1:1,250

Viewpoint 17: View looking north-west from second bus stop on Georges Pier Head

Viewpoint information:

OS reference: 333886, 390169
 Ground level: 6.5m AOD
 Direction of view: 348°
 Distance to site: 2220m

© Crown copyright and database rights 2020 Ordnance Survey 0100031673.
 Aerial Source: Esri, DigitalGlobe, GeoEye, Earthstar Geographics, CNES/Airbus DS,
 USDA, USGS, AeroGRID, IGN, and the GIS User Community.

**Viewpoint Photographs &
 Accurate Visual Representations**

LA.26.0

**Project no. A100795
 The People's Project**

August 2020

**Everton Stadium
 Development
 Limited**





Baseline Photograph

View flat at a comfortable arm's length



Type 4 Visualisation - Photowire

View flat at a comfortable arm's length

Viewpoint information:		Horizontal field of view: 90° (cylindrical projection)		Correct printed image size: 820 x 250mm	
OS reference:	333886, 390169	Vertical field of view:	27°	Camera:	EOS 5D Mk III
Ground level:	6.5m AOD	Enlargement factor:	96%	Lens:	50mm (Canon EF 50mm f/1.4 USM)
Direction of view:	348°	Principal distance:	812.5mm	Camera height:	1.6m AGL
Distance to site:	2220m	Paper size:	840 x 297mm (extended A3)	Date and time:	15/02/19 11:03

Viewpoint 17: View looking north-west from second bus stop on Georges Pier Head

Revision	
A	Sheet layout updated, photowire updated for revised stadium design

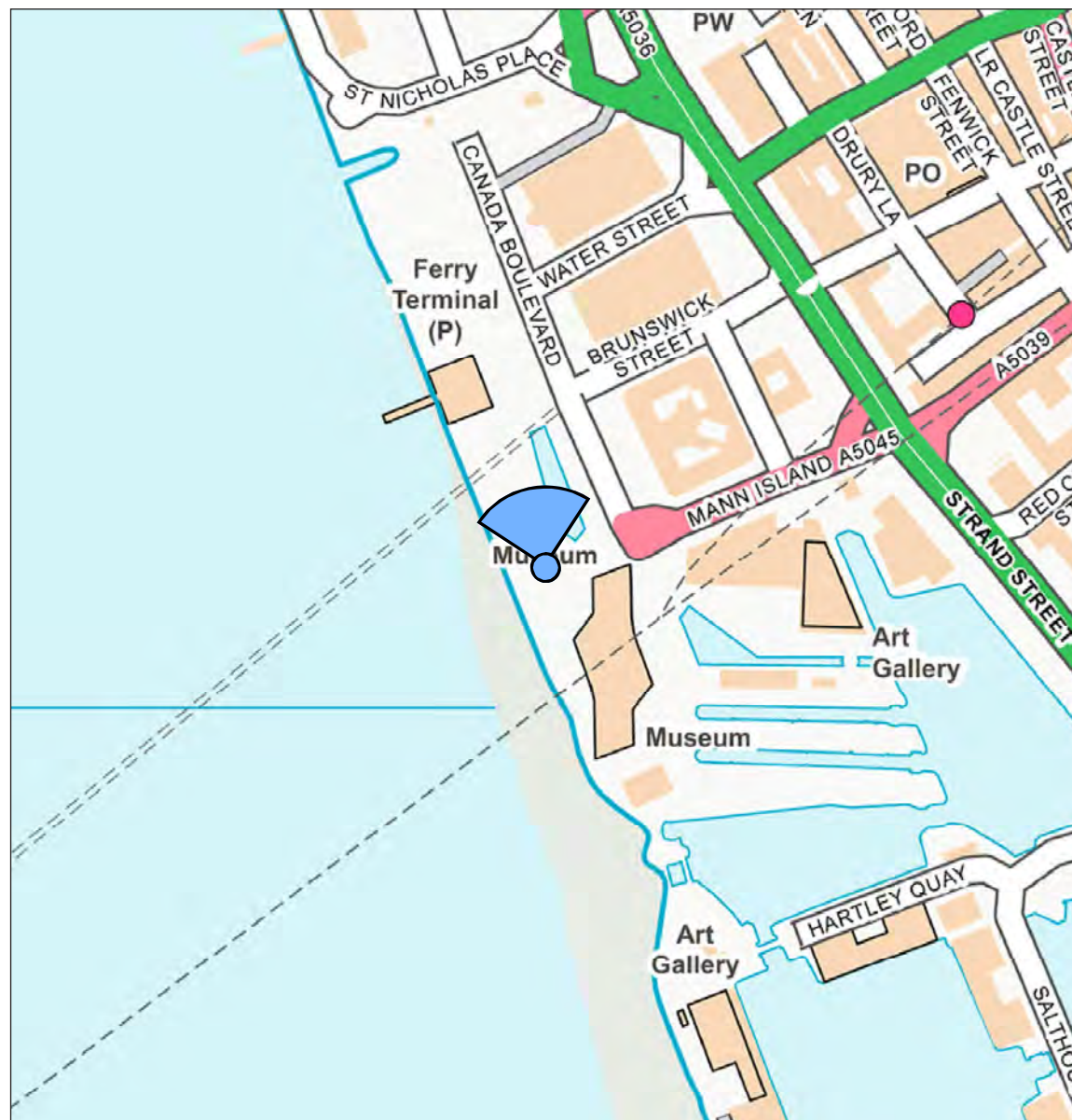
12/08/20

**Viewpoint Photographs &
Accurate Visual Representations**

LA.26.2[A]

Project no. A100795
The People's Project

August 2020

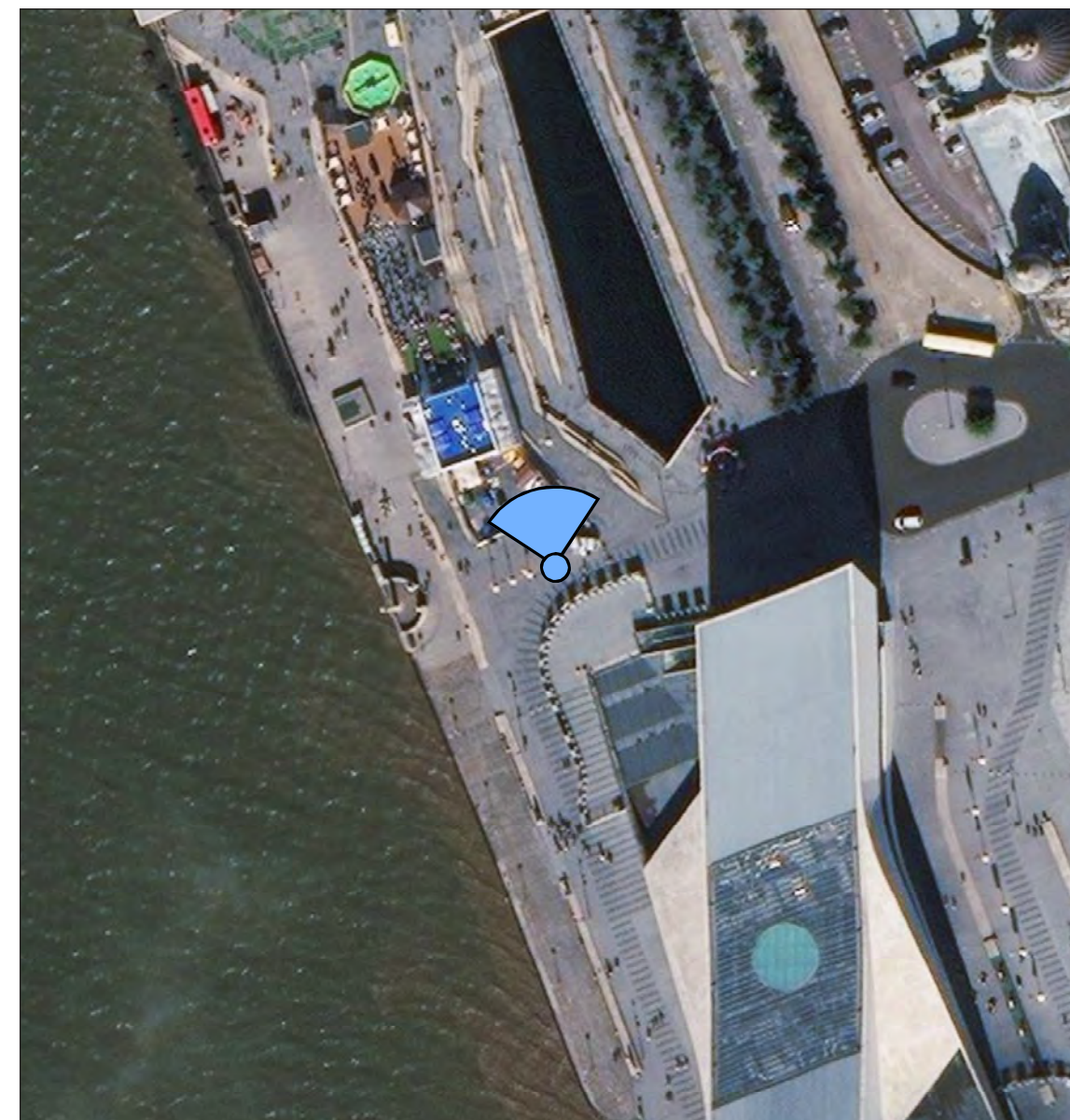


Scale 1:5,000

Viewpoint 18: View north-west from the south-west corner of Pier Head plaza area

Viewpoint information:

OS reference: 333860, 390095.5
 Ground level: 6.8m AOD
 Direction of view: 348°
 Distance to site: 2290m



Scale 1:1,250

© Crown copyright and database rights 2020 Ordnance Survey 0100031673.
 Aerial Source: Esri, DigitalGlobe, GeoEye, Earthstar Geographics, CNES/Airbus DS,
 USDA, USGS, AeroGRID, IGN, and the GIS User Community.

**Viewpoint Photographs &
 Accurate Visual Representations**

LA.27.0

Project no. A100795
 The People's Project

August 2020

**Everton Stadium
 Development
 Limited**





Baseline Photograph

View flat at a comfortable arm's length

Viewpoint information:		Horizontal field of view: 90° (cylindrical projection)		Correct printed image size: 820 x 250mm	
OS reference:	333860, 390095.5	Vertical field of view:	27°	Camera:	EOS 6D Mk II
Ground level:	6.8m AOD	Enlargement factor:	96%	Lens:	50mm (Canon EF 24-70mm f/4 IS USM)
Direction of view:	348°	Principal distance:	812.5mm	Camera height:	1.6m AGL
Distance to site:	2290m	Paper size:	840 x 297mm (extended A3)	Date and time:	12/09/19 14:25

Viewpoint 18: View north-west from the south-west corner of Pier Head plaza area

Revision	
A	Sheet layout updated

12/08/20

**Viewpoint Photographs &
Accurate Visual Representations**

LA.27.1 [A]

Project no. A100795
The People's Project

August 2020

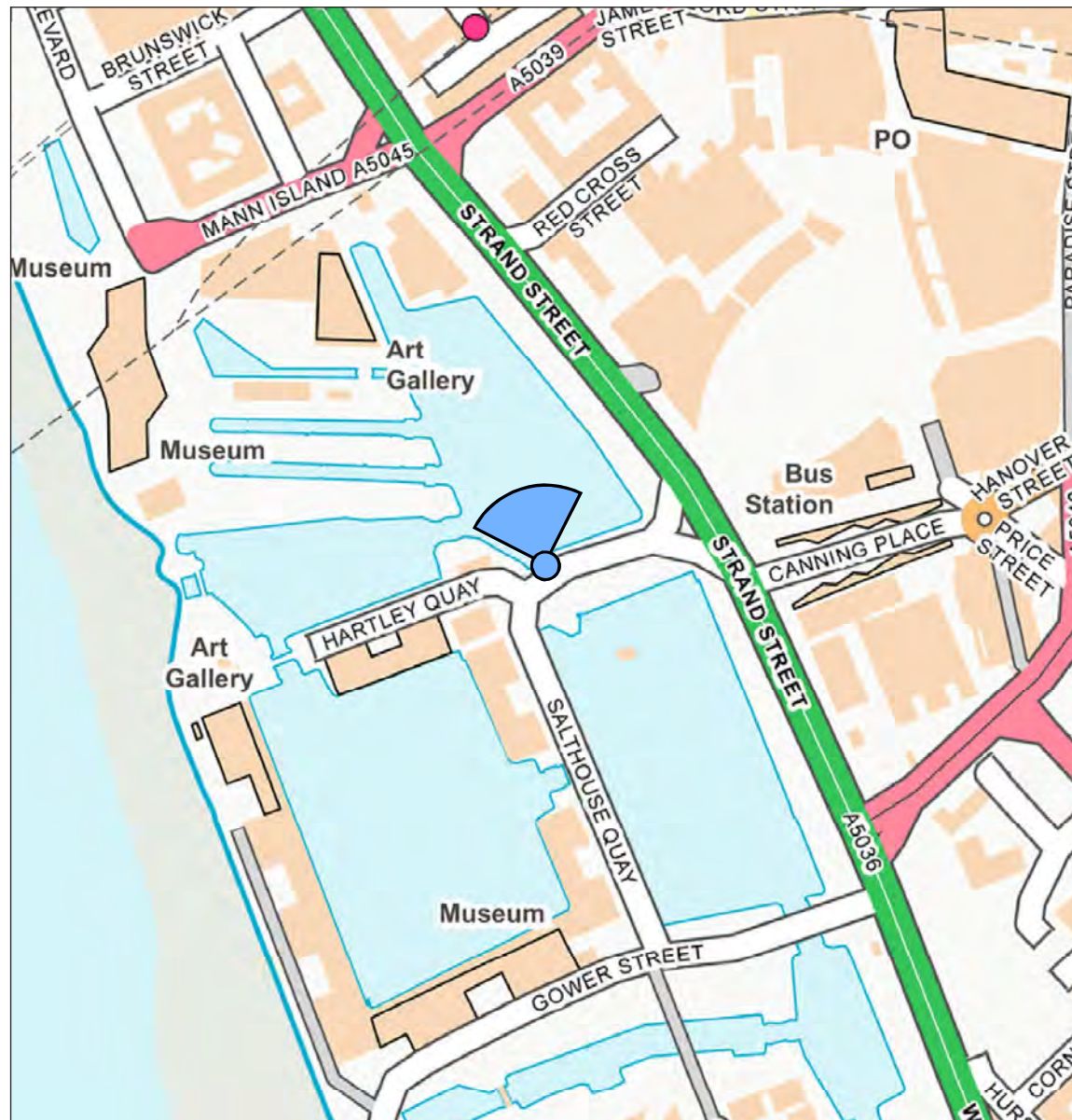
**Everton Stadium
Development
Limited**





Type 4 Visualisation - Photowire

View flat at a comfortable arm's length



Scale 1:5,000

Viewpoint 19: View looking north-west from Salthouse Quay across Canning Dock

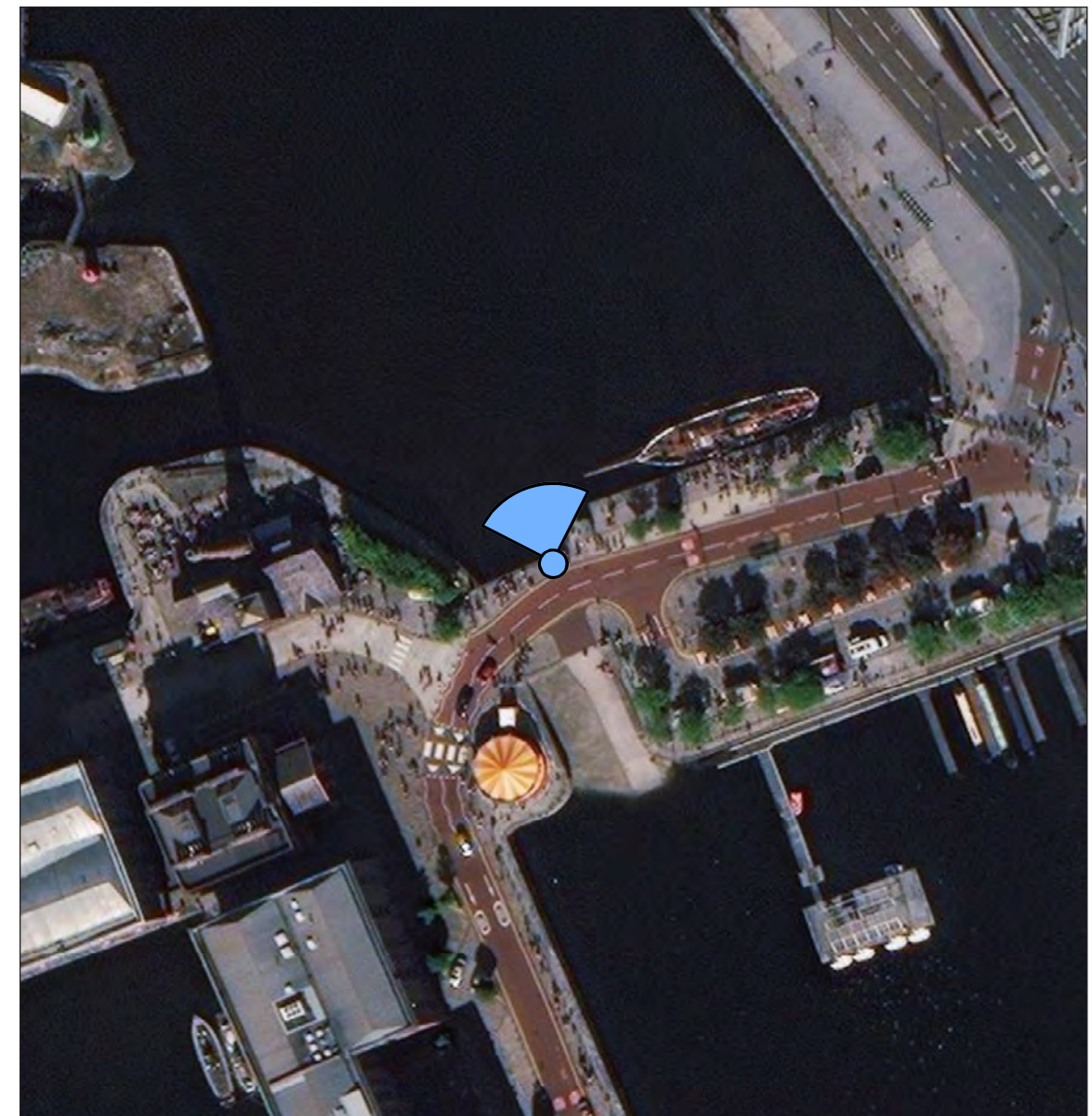
Viewpoint information:

OS reference: 334186.25, 389904

Ground level: 6.2m AOD

Direction of view: 342°

Distance to site: 2535m



Scale 1:1,250

© Crown copyright and database rights 2020 Ordnance Survey 0100031673.
Aerial Source: Esri, DigitalGlobe, GeoEye, Earthstar Geographics, CNES/Airbus DS,
USDA, USGS, AeroGRID, IGN, and the GIS User Community.

**Viewpoint Photographs &
Accurate Visual Representations**

LA.28.0

Project no. A100795
The People's Project

August 2020

**Everton Stadium
Development
Limited**





Baseline Photograph

View flat at a comfortable arm's length



Viewpoint information:
OS reference: 334186.25, 389904
Ground level: 6.2m AOD
Direction of view: 342°
Distance to site: 2535m

Horizontal field of view: 90° (cylindrical projection)
Vertical field of view: 27°
Enlargement factor: 96%
Principal distance: 812.5mm
Paper size: 840 x 297mm (extended A3)

Correct printed image size: 820 x 250mm
Camera: EOS 6D Mk II
Lens: 50mm (Canon EF 24-70mm f/4 IS USM)
Camera height: 1.6m AGL
Date and time: 12/09/19 15:05

Viewpoint 19: View looking north-west from Salthouse Quay across Canning Dock

Revision
A Sheet layout updated, photowire updated for revised stadium design

12/08/20

**Viewpoint Photographs &
Accurate Visual Representations**

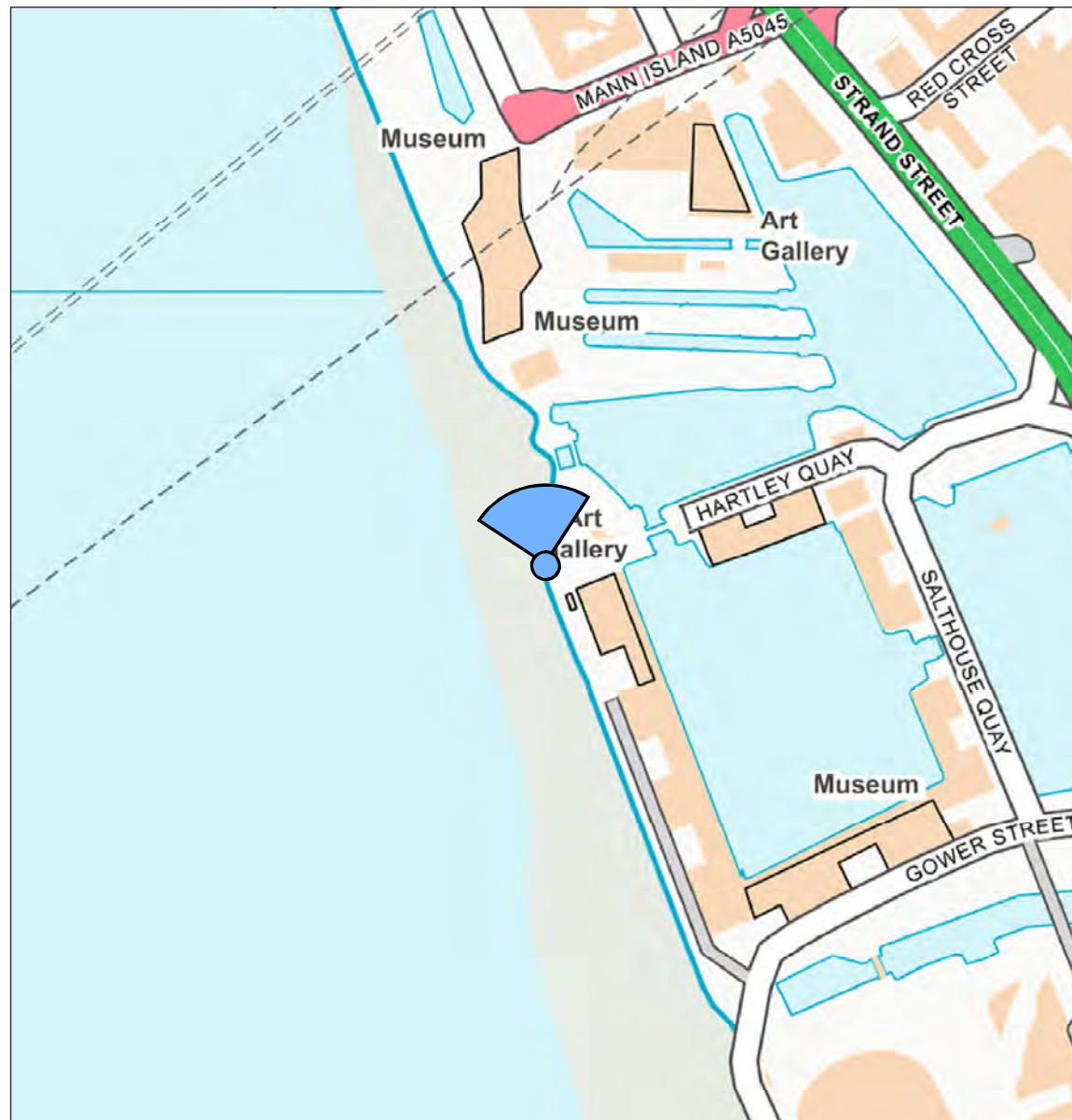
LA.28.2[A]

Project no. A100795
The People's Project

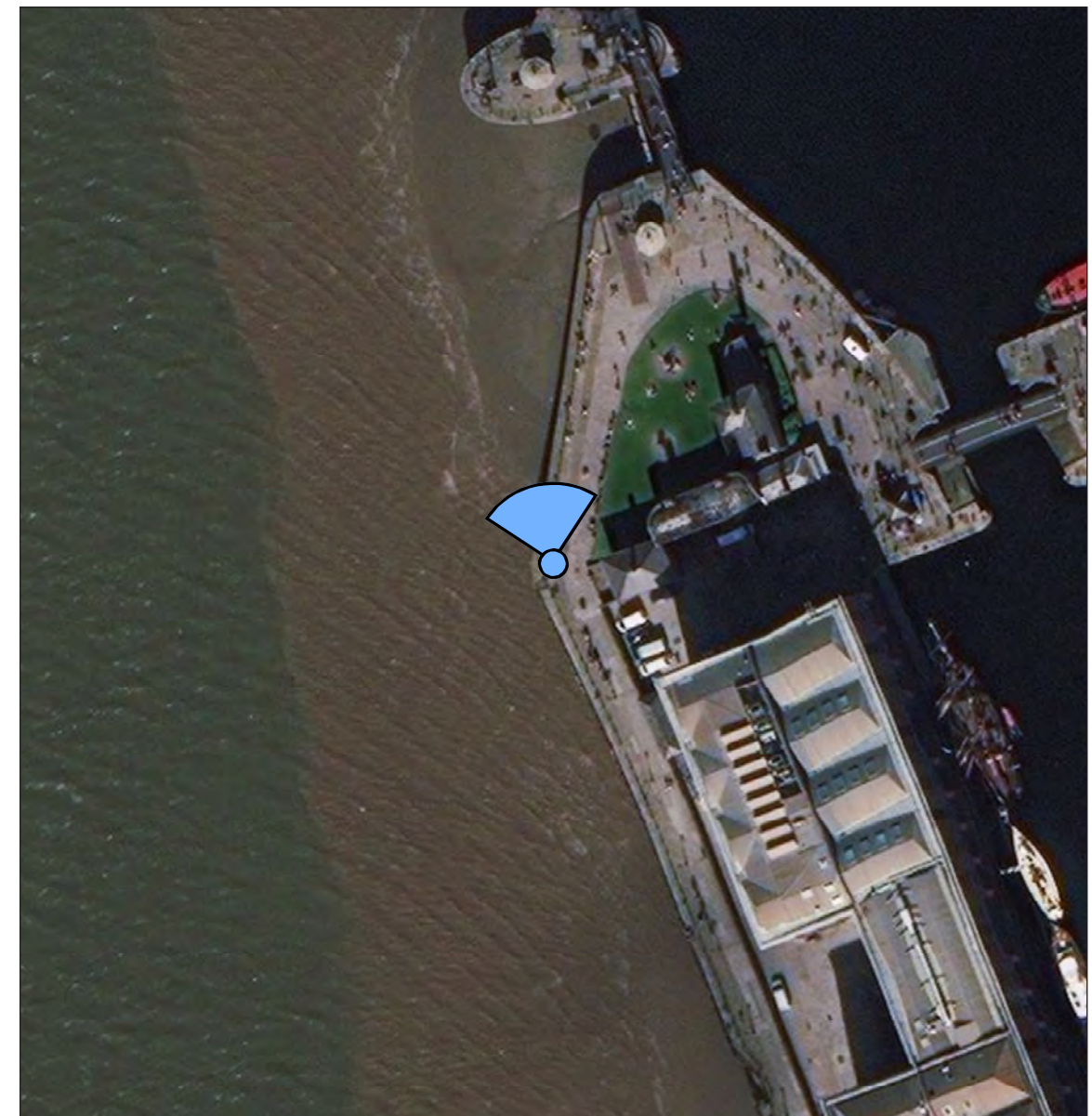
August 2020

**Everton Stadium
Development
Limited**





Scale 1:5,000



Scale 1:1,250

Viewpoint 20: View looking north-west from the waterside promenade at the north-west corner of Albert Dock

Viewpoint information:

OS reference: 333935, 389817.25

Ground level: 6.6m AOD

Direction of view: 348°

Distance to site: 2575m

© Crown copyright and database rights 2020 Ordnance Survey 0100031673.
Aerial Source: Esri, DigitalGlobe, GeoEye, Earthstar Geographics, CNES/Airbus DS,
USDA, USGS, AeroGRID, IGN, and the GIS User Community.

**Viewpoint Photographs &
Accurate Visual Representations**

LA.29.0

Project no. A100795
The People's Project

August 2020

**Everton Stadium
Development
Limited**





Baseline Photograph

View flat at a comfortable arm's length

Viewpoint information:		Horizontal field of view:	90° (cylindrical projection)	Correct printed image size:	820 x 250mm
OS reference:	333935, 389817.25	Vertical field of view:	27°	Camera:	EOS 6D Mk II
Ground level:	6.6m AOD	Enlargement factor:	96%	Lens:	50mm (Canon EF 24-70mm f/4 IS USM)
Direction of view:	348°	Principal distance:	812.5mm	Camera height:	1.6m AGL
Distance to site:	2575m	Paper size:	840 x 297mm (extended A3)	Date and time:	12/09/19 14:49

Viewpoint 20: View looking north-west from the waterside promenade at the north-west corner of Albert Dock

Revision	
A	Sheet layout updated

12/08/20

**Viewpoint Photographs &
Accurate Visual Representations**

LA.29.1 [A]

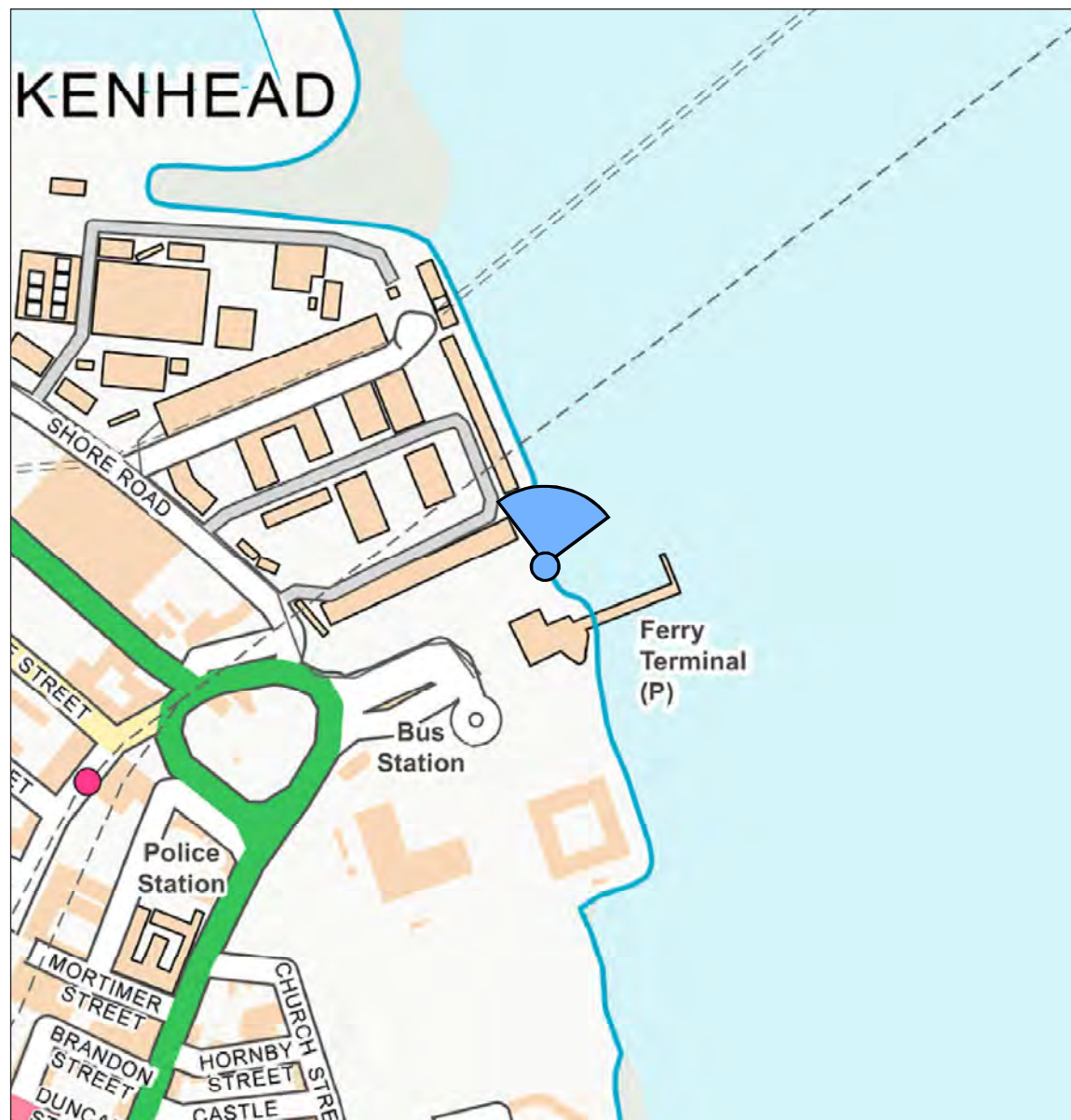
Project no. A100795
The People's Project

August 2020

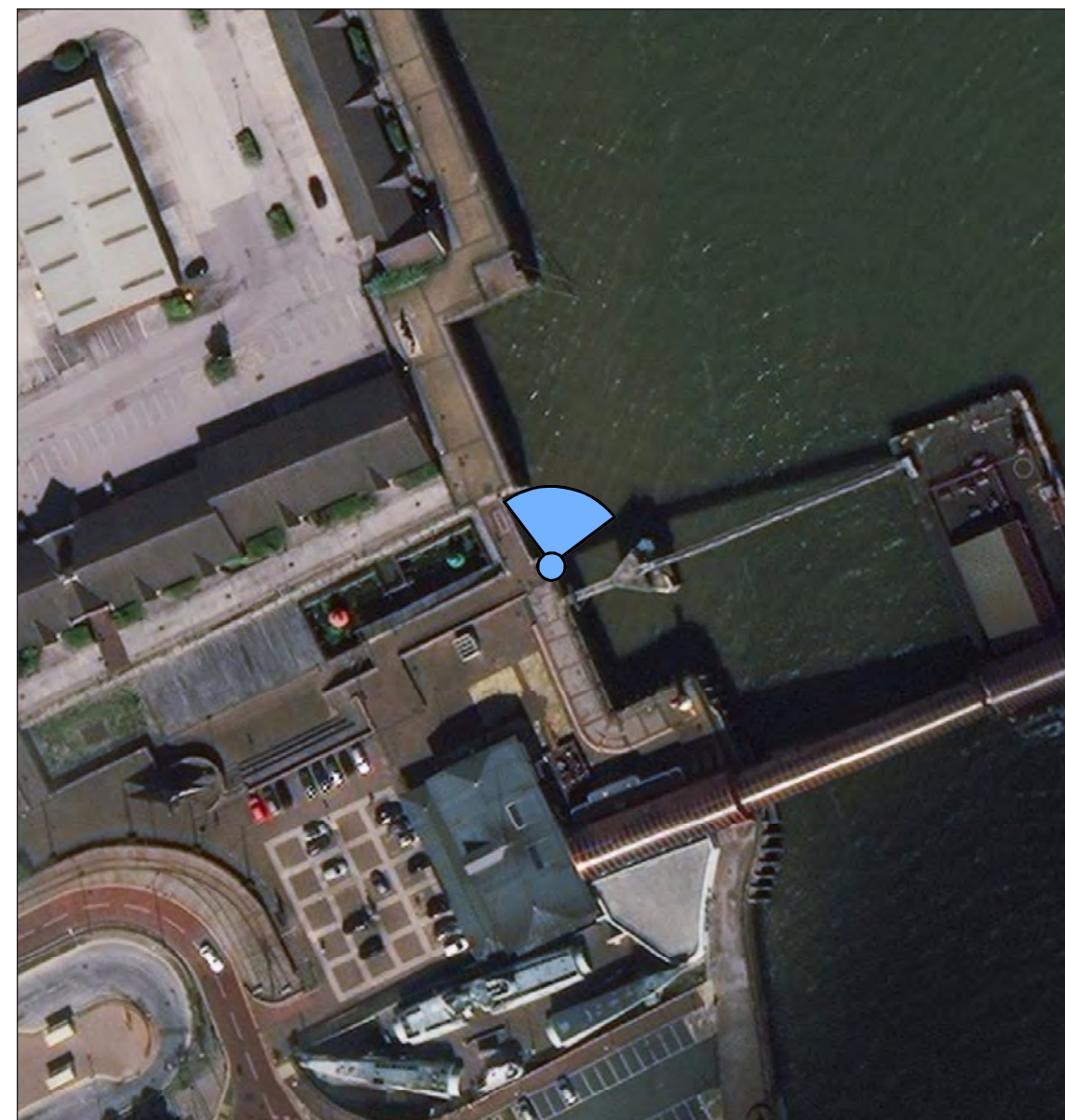


Type 4 Visualisation - Photowire

View flat at a comfortable arm's length



Scale 1:5,000



Scale 1:1,250

Viewpoint 21: View looking north-east from Woodside Ferry Terminal across the River Mersey

Viewpoint information:

OS reference: 332983.5, 389247.75

Ground level: 5.8m AOD

Direction of view: 8°

Distance to site: 3125m

© Crown copyright and database rights 2020 Ordnance Survey 0100031673.
Aerial Source: Esri, DigitalGlobe, GeoEye, Earthstar Geographics, CNES/Airbus DS,
USDA, USGS, AeroGRID, IGN, and the GIS User Community.

**Viewpoint Photographs &
Accurate Visual Representations**

LA.30.0

Project no. A100795
The People's Project

August 2020

**Everton Stadium
Development
Limited**





Baseline Photograph

View flat at a comfortable arm's length

Viewpoint information:	Horizontal field of view:	90° (cylindrical projection)	Correct printed image size:	820 x 250mm
OS reference: 332983.5, 389247.75	Vertical field of view:	27°	Camera:	EOS 5D Mark III
Ground level: 5.8m AOD	Enlargement factor:	96%	Lens:	50mm (Canon EF 50mm f/1.4 USM)
Direction of view: 8°	Principal distance:	812.5mm	Camera height:	1.6m AGL
Distance to site: 3125m	Paper size:	840 x 297mm (extended A3)	Date and time:	24/07/19 14:38

Viewpoint 21: View looking north-east from Woodside Ferry Terminal across the River Mersey

Revision	
A	Sheet layout updated

12/08/20

**Viewpoint Photographs &
Accurate Visual Representations**

LA.30.1 [A]

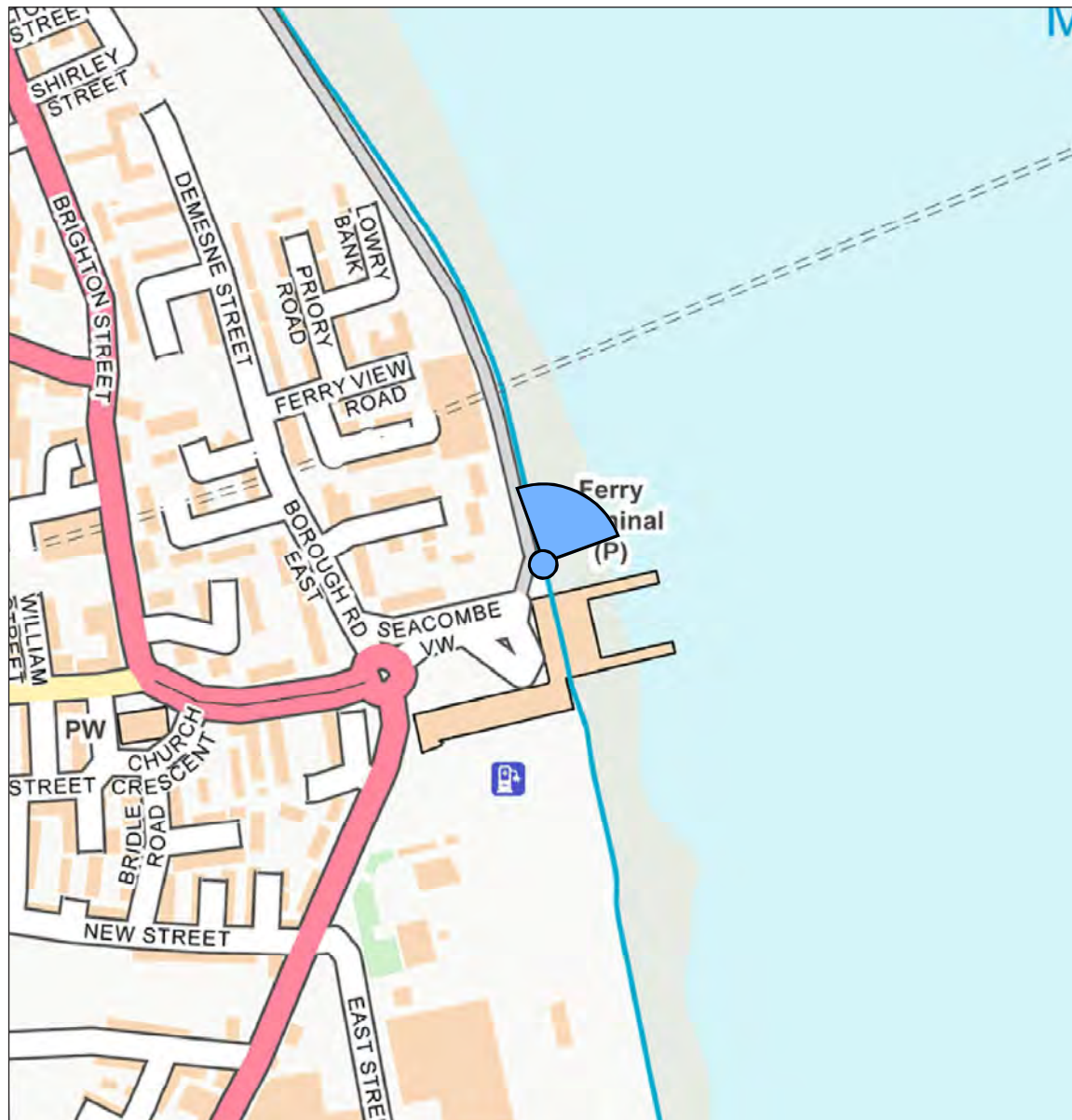
Project no. **A100795**
The People's Project

August 2020



Type 4 Visualisation - Photowire

View flat at a comfortable arm's length



Scale 1:5,000



Scale 1:1,250

Viewpoint 22: View looking north-east from Seacombe Ferry Terminal across the River Mersey

Viewpoint information:

OS reference: 332545.5, 390861.5

Ground level: 7.2m AOD

Direction of view: 25°

Distance to site: 1660m

© Crown copyright and database rights 2020 Ordnance Survey 0100031673.
Aerial Source: Esri, DigitalGlobe, GeoEye, Earthstar Geographics, CNES/Airbus DS,
USDA, USGS, AeroGRID, IGN, and the GIS User Community.

**Viewpoint Photographs &
Accurate Visual Representations**

LA.31.0

Project no. A100795
The People's Project

August 2020

**Everton Stadium
Development
Limited**

