

Dawn Coward

From: dawn coward <dawncoward@hotmail.co.uk>
Sent: 20 February 2015 10:10
To: Dawn Coward
Subject: Fwd: SFX Planning matters

Sent from my iPad

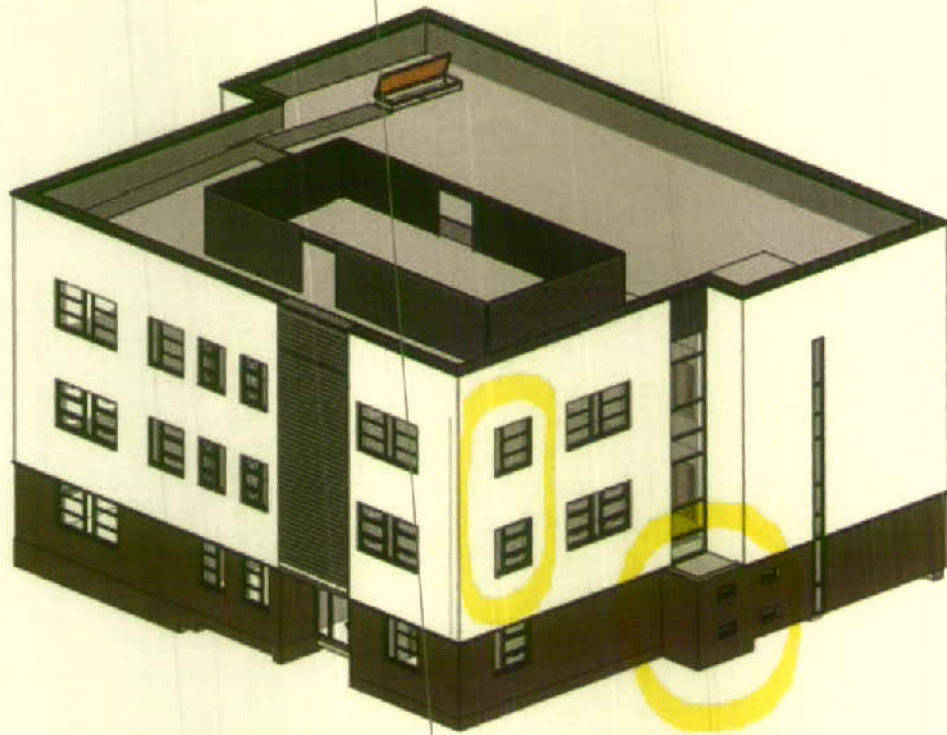
Begin forwarded message:

From: Chris Pickup <chris.pickup@ibigroup.com>
Date: 20 February 2015 09:36:32 GMT
To: Dawn Coward <DCoward@ryderarchitecture.com>, "'Dawn Coward (Dawn Coward Planning Consultancy (Liverpool))'" <dawncoward@hotmail.co.uk>
Cc: "Darling, Mike" <Mike.Darling@kier.co.uk>, "Chris.Hayes@Kier.co.uk" <Chris.Hayes@Kier.co.uk>, "Walsh, Martin" <Martin.Walsh@kier.co.uk>
Subject: SFX Planning matters

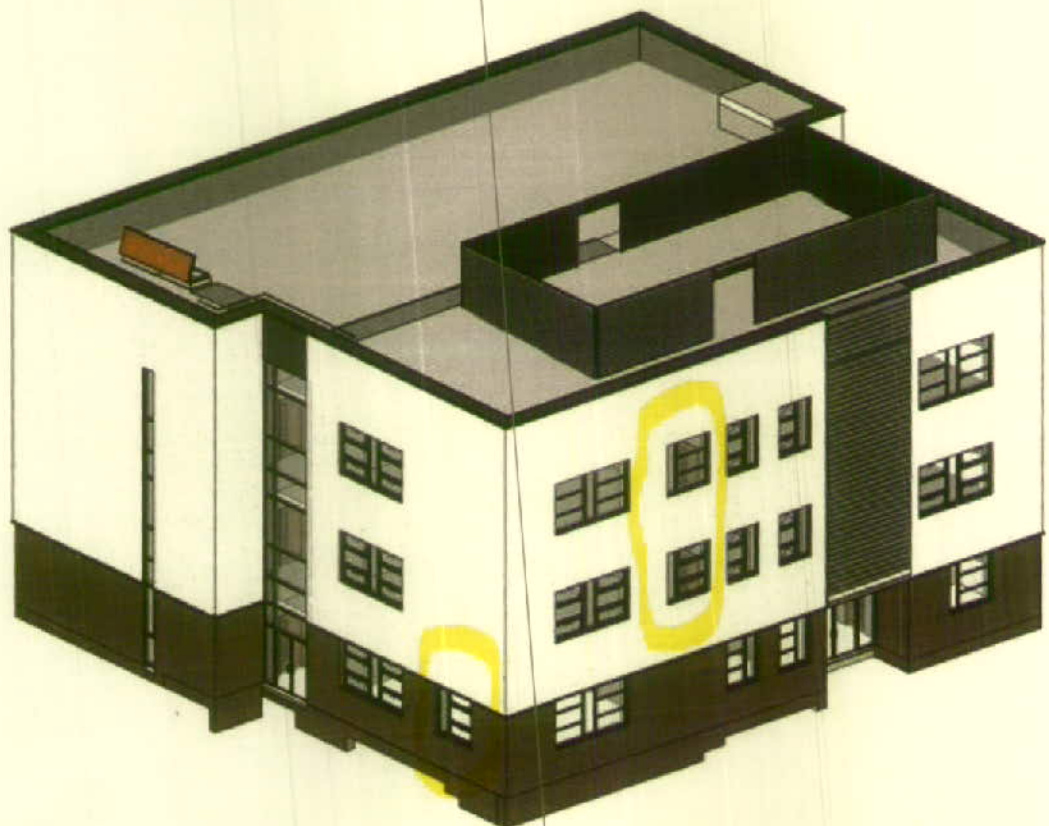
Morning Dawn,

As a quick update on the SFX design, the following amendments / changes have occurred since planning submission:

1. The brick has been changed from an Ibstock Staffordshire Red to a Blockleys Red Brindle. This was due to the original brick choice no longer being available within the timescales required so the closest match has been sourced by Kier's brick supplier. There is a sample on site if required.
2. Solvent store has been added to the ground floor science block. As this faces North West, it would not be visible from the adjacent neighbouring properties. The external door which previously provided access to the chemical store has now been made internal, with ventilation to both stores added to the West elevation. See attached image below:

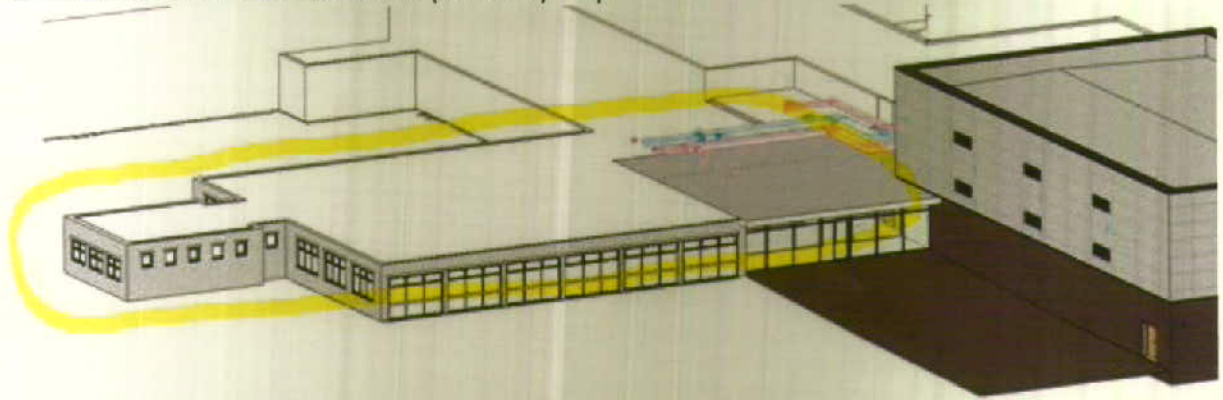


3. 5 number additional windows have been added to the science block following a detailed daylight and ventilation strategy review. 2 to the West elevation highlighted above, 1 to the East and 2 to the North as highlighted below. These additional windows do not overlook any neighbouring properties and cannot be seen from said properties.



4. Whilst not fully resolved, we are looking to mechanically ventilate the refurbished music department adjacent to the new main entrance. Because of existing building height restrictions, we will have to run the ductwork on the roof. As a result, we may also need a

handrail / screen to provide edge protection for maintenance. At present though, the roof M&E design has not been finalised so it may be better to review this in a few weeks when we have had chance to coordinate (and cost) fully.



If you are able to run these past Jon at your meeting today and advise on how we can deal with these changes, that would be greatly appreciated.

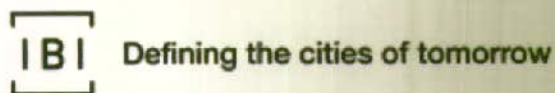
Kind regards,

Chris

Chris Pickup

Architect
email chris.pickup@ibigroup.com web www.ibigroup.com

IBI GROUP
The Plaza
100 Old Hall Street
Liverpool L3 9QJ United Kingdom
tel +44 151 702 6501 fax +44 151 255 2271



IBI Group (UK) Limited. Registered in England and Wales
Registered office: Chadsworth House, Wilmslow Road, Handforth, Cheshire SK9 3HP
COMPANY REGISTRATION NO. 3154411 ISO9001:2008 certification

NOTE: This email message/attachments may contain privileged and confidential information. If received in error, please notify the sender and delete this e-mail message.