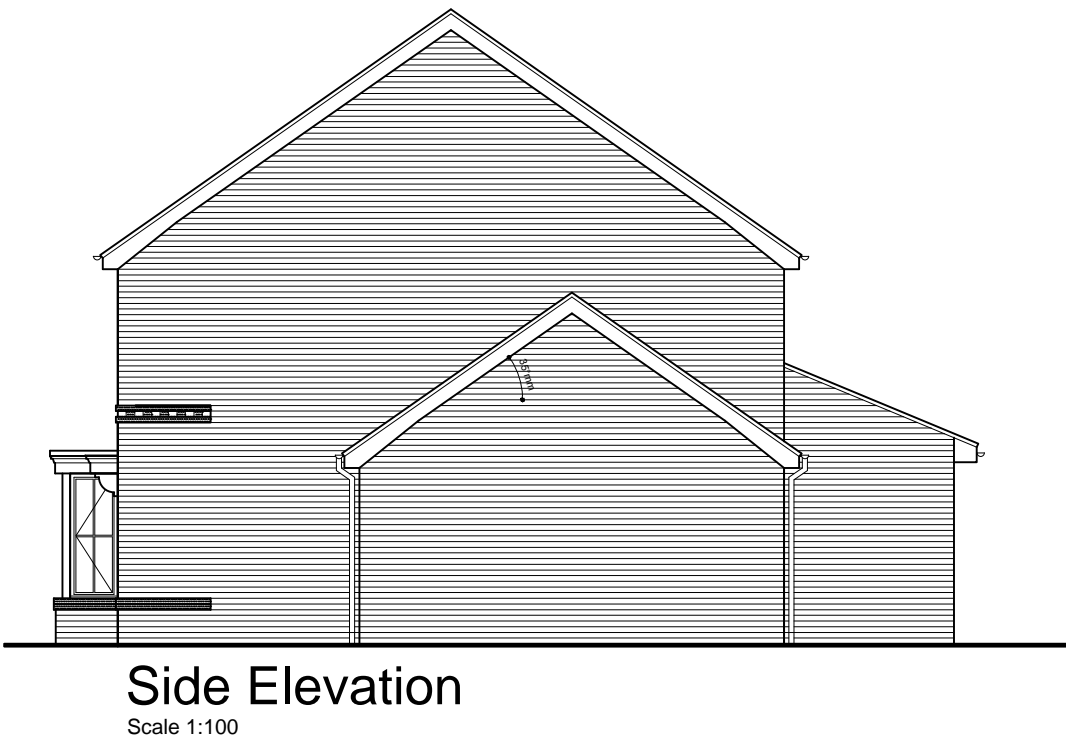
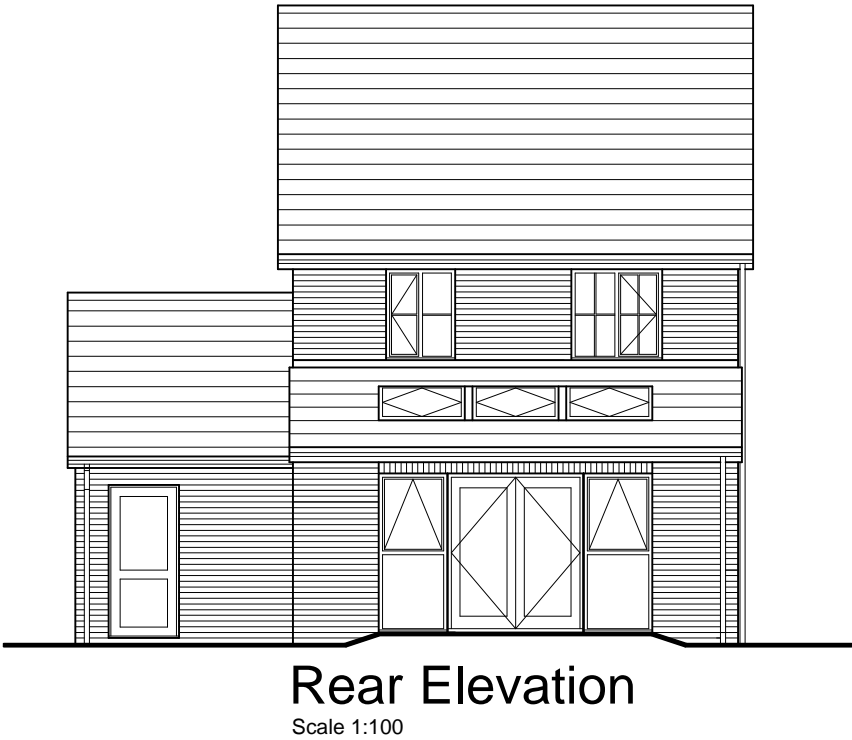


The Ashop	
Old Ref :	Lymington C
Gross Area :	1075 sqft
Ground Floor :	609 sqft
First Floor :	466 sqft
Circulation :	121 sqft
Net to Gross	11%
All Areas and dimensions are taken to STRUCTURAL FINISH.	



The Ashop

(1075sqft)

© This drawing is copyright of Countryside Properties (UK) Limited and must not be copied or reproduced in whole or in part, nor used in conjunction with any project without Countryside's written consent.





COUNTRYSIDE
Places People Love

Countryside Properties (UK) Limited
Regeneration North
600 Lakeside Drive
Centre Park
Warrington WA1 1RW
Tel: 01925 248900 Fax: 01925 248901
www.countryside-properties.com

site:
**Countryside Properties
Regeneration North
2014 Range**

title:
**The Ashop
Brick Elevations**

FS 53054 ISO 9001:2008
EMS 61920 ISO 14001:2004

drawn by: **APC**
 checked:
 scale: **1:100**
 @A3
 date: **Oct 2013**

drawing no: **ASHP(14)-6.0**
 sheet no:
 revision: **-**

g:\1. p&d\2. standard housetypes\1. private\ashop (1075)\6. planning drawing\ashop (1075).dwg