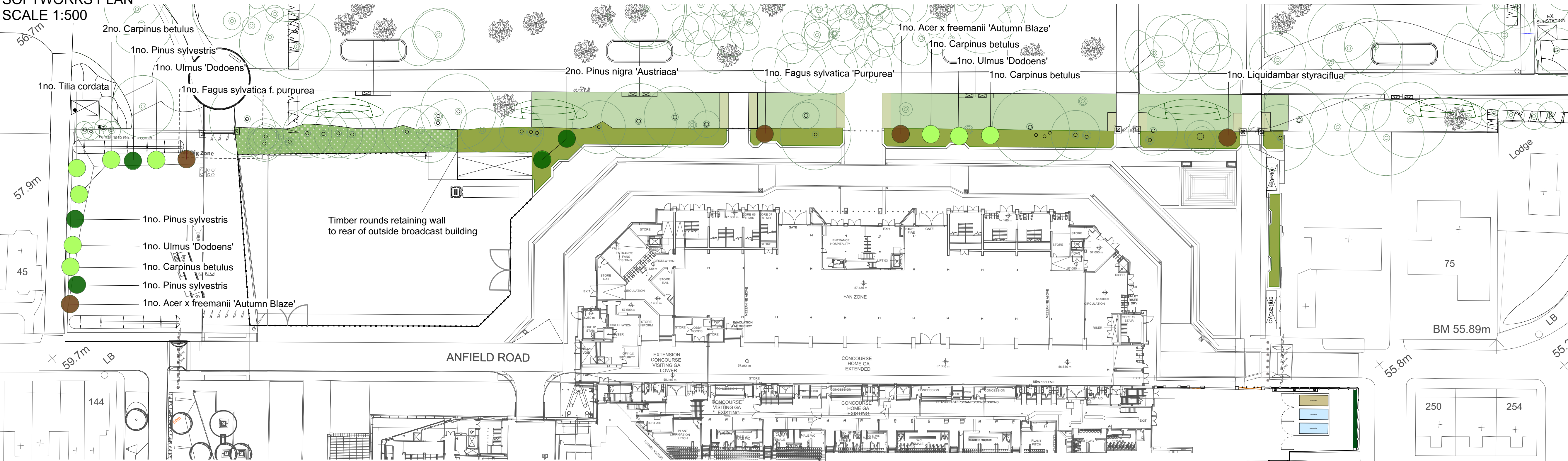


SOFTWORKS PLAN  
SCALE 1:500



Trees

Abbrev.	Botanical Name	Common Name	Girth/ Dia. cm	Height cm	Root Zone	Specification	Mix %	Ctr m	Qty
A x f 'Ab'	Acer x freemanii 'Autumn Blaze'	Freeman Maple 'Autumn Blaze'	20-25	600-650	RB	3x; Semi-mature; clear stem min. 200cm		1.00	1
A x f 'Ab'	Acer x freemanii 'Autumn Blaze' (ex. stock)	Freeman Maple 'Autumn Blaze'	40-50	600-700	Air pot	3x; Semi-mature; clear stem min. 200cm			1
C be	Carpinus betulus	Common Hornbeam	25-30	550-600	RB	4x; Semi-mature; clear stem min. 200cm		1.00	5
F s 'Pu'	Fagus sylvatica 'Purpurea'	Copper Beech	30-35	550-600	RB	4x; Semi-mature; clear stem min. 200cm		1.00	2
L st	Liquidambar styraciflua (ex. stock)	Sweet Gum	50-60	600-700	Air pot	6x; Semi-mature; clear stem min. 200cm		1.00	1
P ni	Pinus nigra 'Austriaca' (ex. stock)	Austrian Pine		500-600	Air pot	Clear stem min. 200cm		1.00	2
P sy	Pinus sylvestris	Scots Pine		350-400	RB	5x; Semi-mature; clear stem min. 200cm		1.00	3
T co	Tilia cordata	Small-leaved Lime	25-30	550-600	RB	4x; Semi-mature; clear stem min. 200cm		1.00	1
U 'D'	Ulmus 'Dodoens'	Elm 'Dodoens'	25-30	550-600	RB	4x; Semi-mature; clear stem min. 200cm		1.00	3

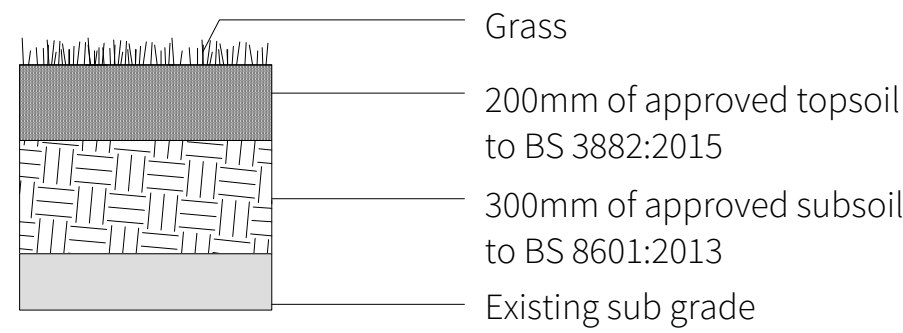
PLANTING

Name	Height (cm)	Root Type	Container Size	Density m <sup>2</sup>	Comments
Actaea simplex 'Brunette'		C	3L	2	Full pot; vegetative propagation
Anemone x hybrida 'Queen Charlotte'		CL		5	Vegetative propagation
Asplenium scolopendrium		C	3L	5	Full pot; seed propagation
Berberis thunbergii 'Orange rocket'	60-80	C	10L	1	Branched. Min 7 breaks
Carex buchananii	40-60	C	5L	4	Full pot; vegetative propagation
Cornus alba 'Ivory Halo'	40-60	C	3L	3	Branched. Min 4 breaks
Crocsmia 'Lucifer'		C	3L	7	Full pot; vegetative propagation
Epimedium x warleyense		C	3L	5	Full pot
Escallonia 'Red Elf'	30-40	C	2L	4	Bushy. Min 3 breaks
Heuchera 'Amethyst Mist'		C	3L	4	Full pot
Imperata cylindrica 'Rubra'		C	3L	5	Full pot; vegetative propagation
Luzula nivea		C	5L	2	Full pot; seed or vegetative propagation
Luzula sylvatica 'Marginata'		C	5L	5	Full pot; seed or vegetative propagation
Rosa 'Lancashire'	30-45	C	3	4	Full pot
Sarcococca humilis	25-30	C	5L	4	Bushy. Min 6 breaks
Skimmia japonica 'Rubella'	40-60	C	7.5L	4	Bushy. Min 4 breaks
Tiarella cordifolia		C	3L	4	Full pot; seed or vegetative propagation
Viburnum davidii	30-40	C	5-7.5L	4	Bushy. Min 4 breaks

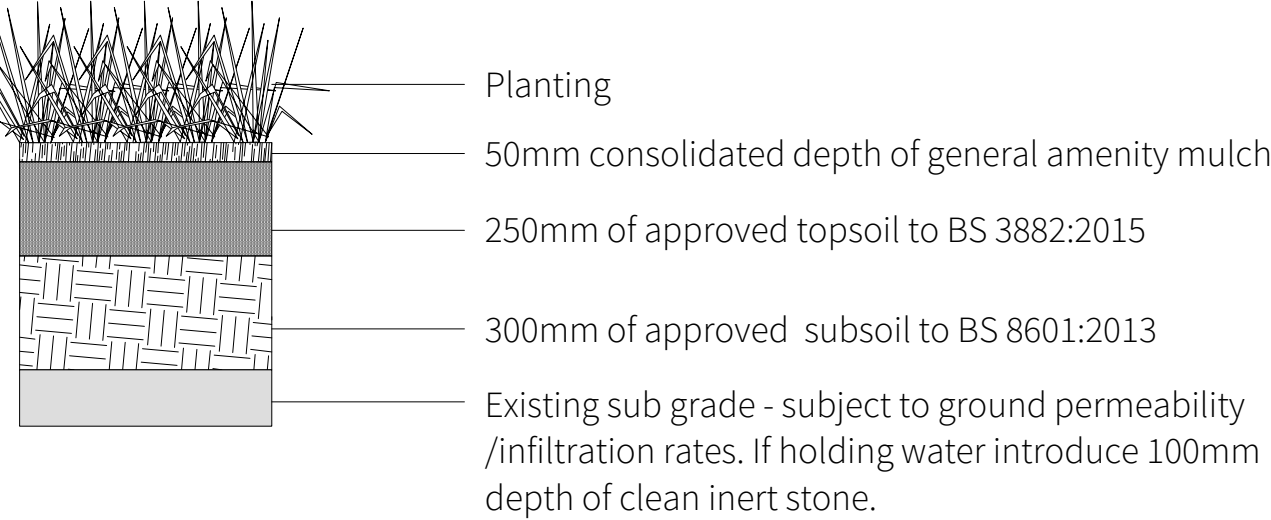
PLANTING NOTES

- Plant handling at the nursery, and during transit up to delivery, shall be in accordance with 'Plant Handling' the booklet published by the Committee for Plant Supply and Establishment (CPSE). The contractor shall comply with clauses 3 & 4 of the above booklet (obtained from the Horticulture Trades Association) which refers to the receipt, unloading and temporary storage of plants.
- Plants shall be first class examples of their species or variety, free from all pests and diseases with good fibrous root systems and materially undamaged. (Refer to relevant sections of BS3936 Parts 1-10 'Specification of Nursery Stock')
- All planting is to be in general compliance with BS4428: 1989 'Code of Practice for general landscape operations (excluding hard surfaces)'.
- All trees are to be staked and secured:
  - All semi-mature trees are to be underground guyed using a triple stake and approved anchor fixing system
- The contractor must ascertain for himself the exact location of any underground services and maintenance points.
- At the time of planting, areas will be covered by an approved depth of topsoil:
  - Topsoil to shrub areas to be 300mm deep
  - Topsoil to tree pits to be 300mm deep plus 600mm subsoilImported topsoil is to be approved via a sample delivery and soil testing results in accordance with the requirements of BS3882:2015 prior to installation
- Water as necessary to ensure the establishment and continued thriving of planted and grassed matter.
- Carry out all work when soil and weather conditions are suitable:
  - Do not plant during periods of frost or strong winds. Plant only during the following periods
    - Bare root deciduous trees and shrubs: Late October to late March
    - Container grown plants: At any time if ground water and weather conditions are favourable. Ensure that adequate watering and weed control is available.
    - Bulbs- autumn.
- All trees in grass are to have a 800mm diameter clear ring to the base to prevent damage from mowing equipment. This ring is to be mulched to a consolidated depth of 50mm using an approved Grade A Amenity Bark Mulch.
- All planting areas are to be mulched to a consolidated depth of 50mm using approved Grade A Amenity Bark.

SOFT LANDSCAPE



GRASS



PLANTING

TREE PIT DETAILS

DETAIL : Semi-mature Trees in shrub / herbaceous planting areas (Sitewide)

- Semi-mature tree planting.
- Hessian wrapping to trunk.
- Triple staked detail underground guying detail.
- 50mm Bark mulch layer 800mm diameter to each tree pit in grass.
- Water and air pipe system.
- Imported topsoil to top 300mm depth of tree pit / trench.
- Imported subsoil to bottom 600mm depth of tree pit / trench.
- Drainage layer 100mm clean stone to base of tree pits.
- Imported topsoil to top 250mm depth shrub / herbaceous planting beds.
- Imported subsoil to bottom 200mm depth shrub / herbaceous planting beds.
- Shrub / herbaceous planting. Refer to schedules for locations and schedules.

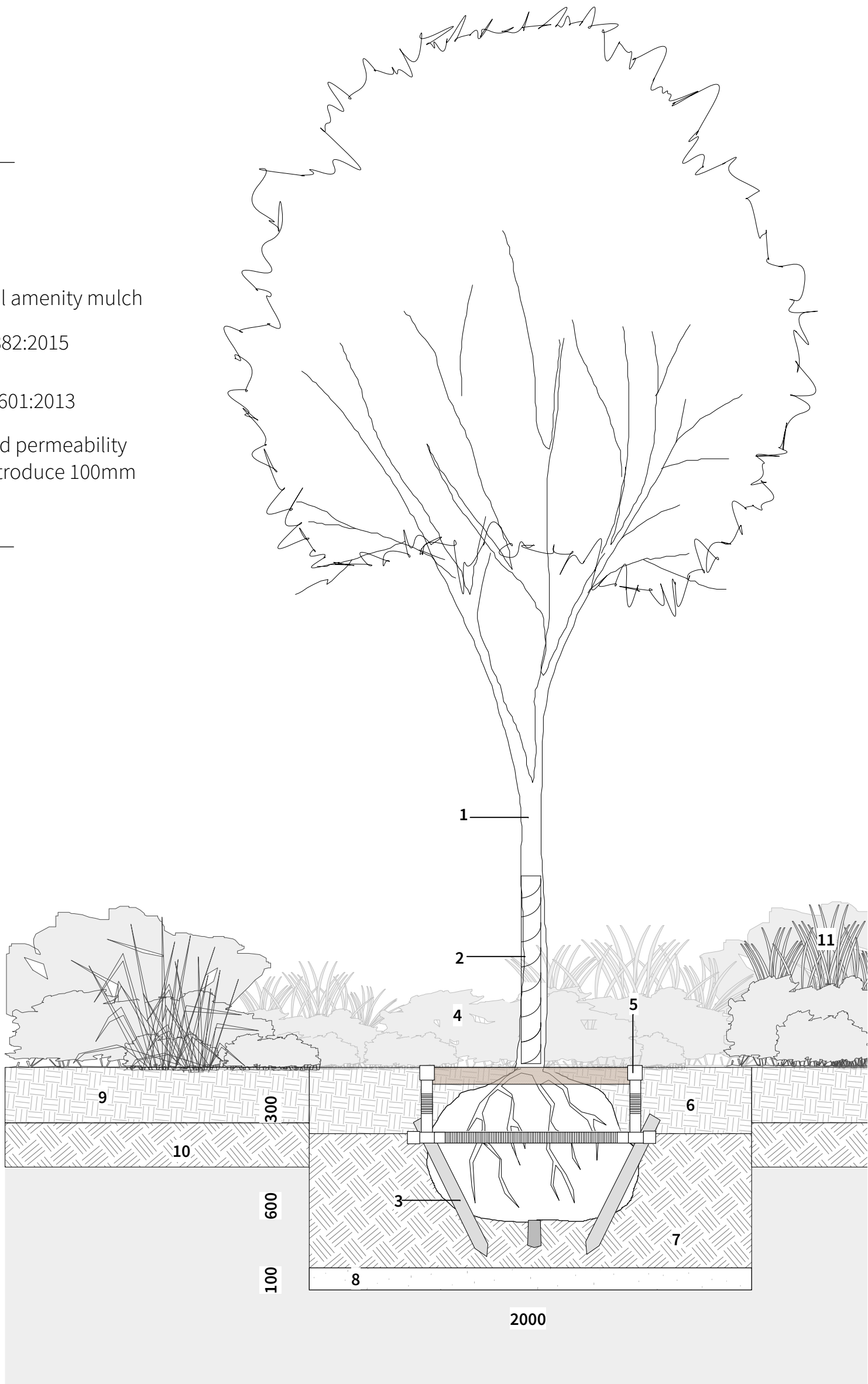
Workmanship and Maintenance Generally.

All works will be subject to the following British Standards :-

- Construction:**
- BS 4428 : 1989 General Landscape Operations
  - BS 3936 : Part 1 2013 Nursery Stock (Specification for trees and shrubs)
  - BS 3936 : Part 4 2013 Nursery Stock (Specification for forest trees)
  - BS 3936 : Part 9 2013 Nursery Stock (Specification for bulbs, corms and tubers)
  - BS 3936 : Part 10 2013 Nursery Stock (Specification for ground cover plants)
  - BS 5837 : 2012 Trees in Relation to Construction
  - BS 3882 : 2015 Topsoil
  - BS 4043 : 1989 Transplanting root based trees
  - BS 5236 : 1975 Cultivating and planting advance nursery stock

- Maintenance:**
- BS 7370:part1: 1991 Grounds maintenance (part 1. Recommendations for establishing and managing grounds maintenance organisations and design considerations
  - BS 7370:part2: 1994 Grounds maintenance part 2. Recommendations for the maintenance of hard areas (excluding sports surfaces)
  - BS 7370:part3: 1991 Grounds maintenance part 3. Recommendations for maintenance of amenity and functional turf (other than sports turf)
  - BS 7370:part4: 1993 Grounds maintenance part 4. Recommendations for maintenance of soft landscape (other than amenity turf)

SOFTWORKS AND TREE PIT DETAILS  
SCALE 1:20 @ A1



THIS DRAWING IS COPYRIGHT PROTECTED AND MAY NOT BE REPRODUCED IN WHOLE OR PART WITHOUT WRITTEN AUTHORITY FROM THE OWNER.

NOTES:

- Do not scale from this drawing.
- Always work to noted dimensions.
- All dimensions are in millimetres unless otherwise stated.
- All setting out, levels and dimensions to be agreed on site.
- The dimensions of all materials must be checked on site before being laid out.
- This drawing must be read with the relevant specification clauses and detail drawings.
- Order of construction and setting out to be agreed on site.

SOFTWORKS KEY

- EXISTING TREE TO BE RETAINED AND PROTECTED
- PROPOSED EVERGREEN TREE REFER TO SCHEDULE
- PROPOSED FEATURE TREE REFER TO SCHEDULE
- PROPOSED DECIDUOUS TREE REFER TO SCHEDULE
- EXISTING GRASSED AREA Overseed where necessary
- EXISTING PLANTED AREA
- PROPOSED TURF TO LOCALISED REGRADED OR DAMAGED AREAS Existing turf may be damaged in construction
- PROPOSED PLANTED AREA
- TIMBER ROUNDS TO PROVIDE RETAINING EDGE TO EMBANKMENT
- PRE-GROWN IVY SCREEN REFER TO DRAWING ARS-PLA-XX-XX-DR-L-0015

NOTE

REFER TO DRAWING  
ARS-PLA-XX-XX-DR-L-2002 FOR TREE STRATEGY

Revision	Date	Description	Drawn	Appr.
----------	------	-------------	-------	-------

**Planit I.E. Limited**  
E: info@planit-ie.com W: planit-ie.com  
**MANCHESTER**  
2 Back Grafton St., Altrincham, WA14 1DY  
T: 0161 963 9281  
**LONDON**  
Unit 6 Waterside, 44-48 Wharf Road, London, N1 7UX  
T: 0207 253 5678  
**LIVERPOOL**  
Tempest 5.3, 12 Tithebarn Street, Liverpool, L2 2DT  
T: 0151 363 1230

Client Liverpool FC

Project Anfield Road Stand Expansion

Drg Title Softworks general arrangement

Created on 18.02.20 Created by HT Approved by GB

Scale AS SHOWN Size A1 Workstage PLANNING

Drg No. ARS-PLA-XX-XX-DR-L-2000 Suitability S4 Revision P04