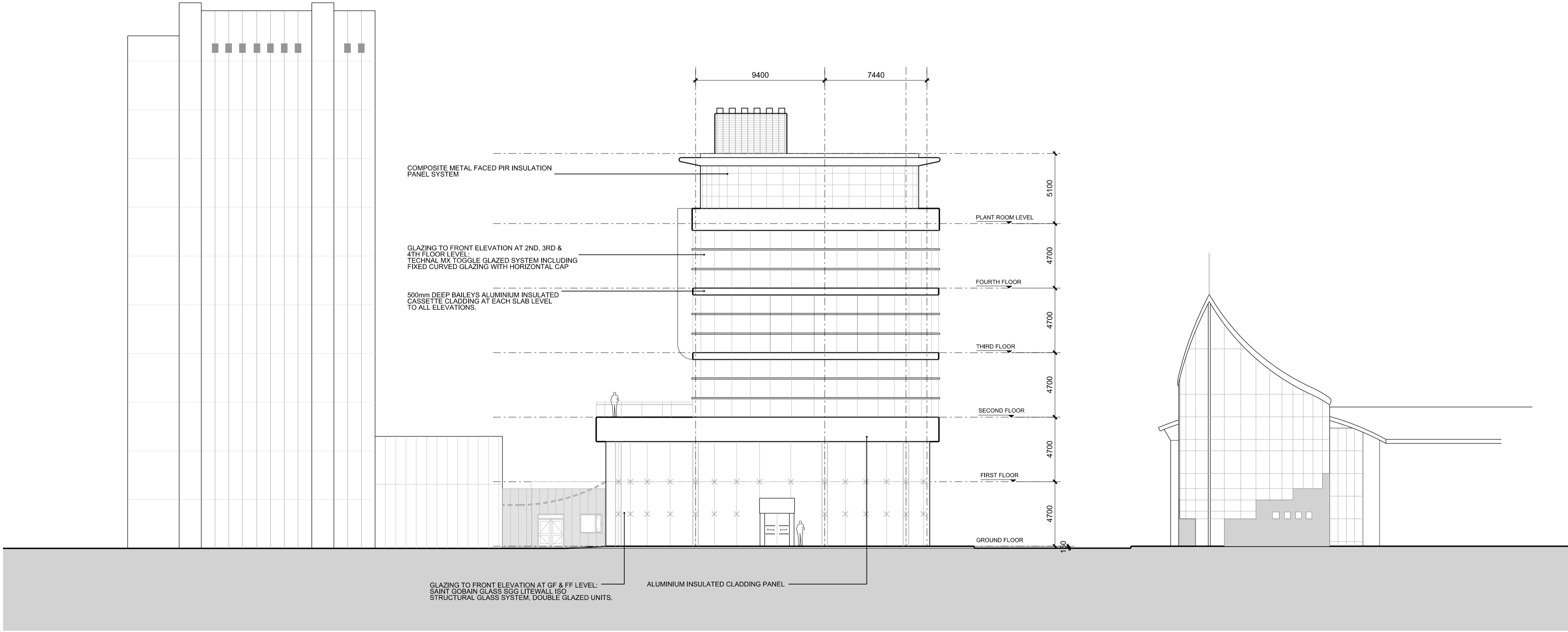
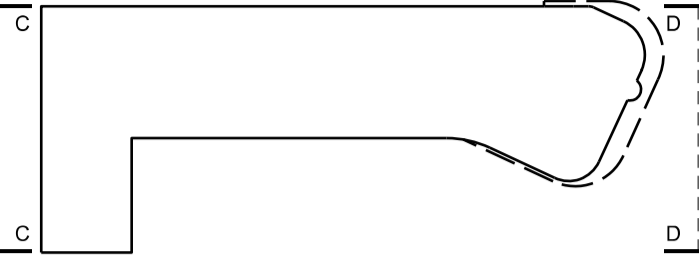


ELEVATION C



ELEVATION D

- NOTES:
- THIS DRAWING IS COPYRIGHT
 - DO NOT SCALE DIMENSIONS FROM DRAWING
 - ANY DISCREPANCIES ON DRAWING TO BE REPORTED TO NIGHTINGALE ASSOCIATES
 - DO NOT MODIFY DRAWING
 - USE DRAWING ONLY FOR PURPOSE(S) ISSUED



KEY:

- FIBRE CEMENT CLADDING PANEL (MARLEY ETERNIT NATURA)
- EXTRUDED ALUMINIUM LOUVRE BLADES IN EXTRUDED ALUMINIUM SECTION FRAMES
- COMPOSITE METAL FACED PIR INSULATION PANEL SYSTEM
- HORIZONTAL STACK BOND ROMAN BRICK
- GLAZING TO FRONT ELEVATION AT GF & FF LEVEL: SAINT GOBAIN GLASS SGG LITEWALL ISO STRUCTURAL GLASS SYSTEM, DOUBLE GLAZED UNITS.
- GLAZING TO FRONT ELEVATION AT 2ND, 3RD & 4TH FLOOR LEVEL: TECHNICAL MX TOGGLE GLAZED SYSTEM INCLUDING FIXED CURVED GLAZING WITH HORIZONTAL CAP
- GLAZING TO DAULBY STREET ELEVATION: TECHNICAL MX GD CURTAIN WALLING VISIBLE GRID WITH FRITTERING ON THE GLAZING
- GLAZING TO DUNCAN BUILDING ELEVATION: TECHNICAL MX GD CURTAIN WALLING VISIBLE GRID WITH SPANDREL PANELS
- AUTOMATED CURVED SLIDING DOORS TO MAIN ENTRANCE
- AUTOMATED SLIDING DOORS TO STAFF ENTRANCE
- FACTORY FINISHED STEEL DOORSETS WITH OVERPANELS COMPLETE WITH SS IRONMONGERY AND WEATHERSTRIPPING
- 500mm DEEP BAILEYS ALUMINIUM INSULATED CASSETTE CLADDING AT EACH SLAB LEVEL TO ALL ELEVATIONS. ALSO TO PRESCOT ST. ELEVATION AT TRUSS LEVEL.

No | Design Risk Register

A | 02/12/11 | General amendments and material key added
Rev | Date | Revision Notes
Client / Contractor

NIGHTINGALE architects
associates ■■■■■ www.nightingaleassociates.com

Project
LIVERPOOL BIO INNOVATION CENTRE

Drawing Title
Proposed End Elevations

Job No 10770			Date 07/11/11			Scale@A1 1:200		
Status Drawing Status								
Drawing No							Rev	
Origin	Zone	Level	Type	Content	Sequential	A		
AR	XX	XX	EL	251	011			