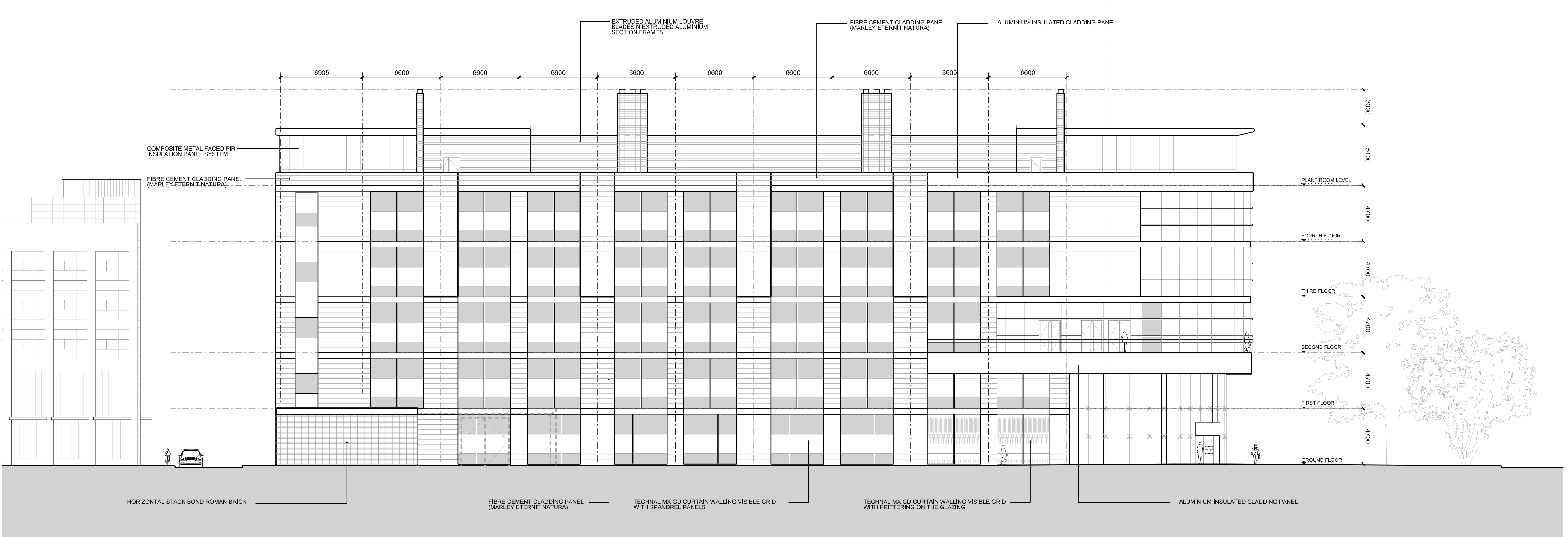
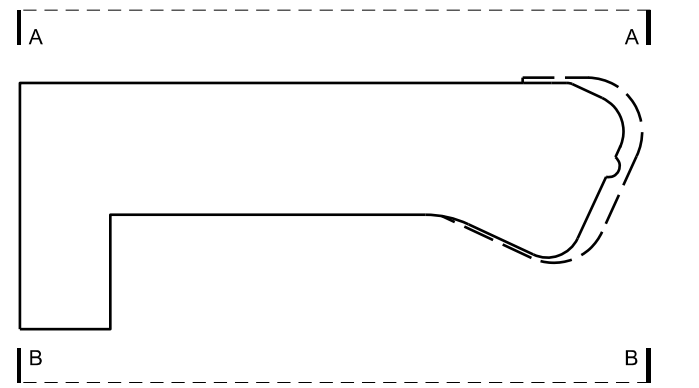


ELEVATION A



ELEVATION B

- NOTES:
- THIS DRAWING IS COPYRIGHT
 - DO NOT SCALE DIMENSIONS FROM DRAWING
 - ANY DISCREPANCIES ON DRAWING TO BE REPORTED TO NIGHTINGALE ASSOCIATES
 - DO NOT MODIFY DRAWING
 - USE DRAWING ONLY FOR PURPOSE(S) ISSUED



- KEY:
- FIBRE CEMENT CLADDING PANEL (MARLEY ETERNIT NATURA)
 - EXTRUDED ALUMINIUM LOUVRE BLADES IN EXTRUDED ALUMINIUM SECTION FRAMES
 - COMPOSITE METAL FACED PIR INSULATION PANEL SYSTEM
 - HORIZONTAL STACK BOND ROMAN BRICK
 - GLAZING TO FRONT ELEVATION AT GF & FF LEVEL: SAINT GOBAIN GLASS SGG LITEWALL ISO STRUCTURAL GLASS SYSTEM, DOUBLE GLAZED UNITS.
 - GLAZING TO FRONT ELEVATION AT 2ND, 3RD & 4TH FLOOR LEVEL: TECHNICAL MX TOGGLE GLAZED SYSTEM INCLUDING FIXED CURVED GLAZING WITH HORIZONTAL CAP
 - GLAZING TO DAULBY STREET ELEVATION: TECHNICAL MX GD CURTAIN WALLING VISIBLE GRID WITH FRITTING ON THE GLAZING
 - GLAZING TO DUNCAN BUILDING ELEVATION: TECHNICAL MX GD CURTAIN WALLING VISIBLE GRID WITH SPANDREL PANELS
 - AUTOMATED CURVED SLIDING DOORS TO MAIN ENTRANCE
 - AUTOMATED SLIDING DOORS TO STAFF ENTRANCE
 - FACTORY FINISHED STEEL DOORSETS WITH OVERPANELS COMPLETE WITH SS IRONMONGERY AND WEATHERSTRIPPING
 - 500mm DEEP BAILEYS ALUMINIUM INSULATED CASSETTE CLADDING AT EACH SLAB LEVEL TO ALL ELEVATIONS. ALSO TO PRESCOT ST. ELEVATION AT TRUSS LEVEL.

No Design Risk Register

Rev Date Revision Notes
Client / Contractor

NIGHTINGALE architects
associates

www.nightingaleassociates.com

Project
LIVERPOOL BIO INNOVATION CENTRE

Drawing Title
DAULBY STREET ELEVATION
DUNCAN BUILDING ELEVATION

Job No 10770 Date 25/11/11 Scale@A1 1:200
Status

Drawing No	Origin	Zone	Level	Type	Content	Sequential	Rev
AR XX XX EL 251 010							A