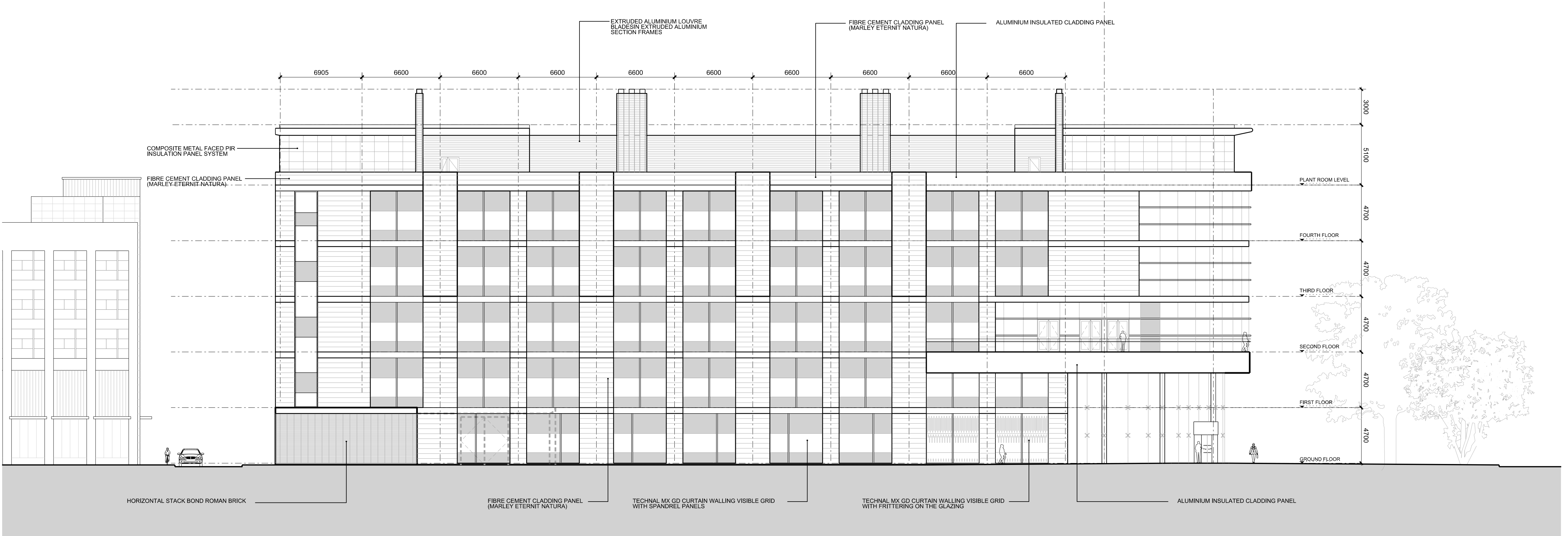
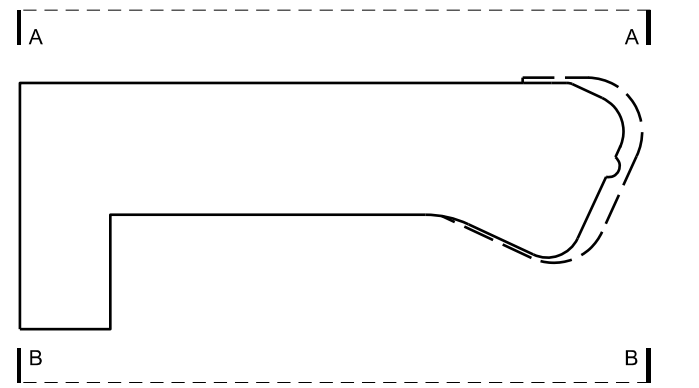


ELEVATION A



ELEVATION B

- NOTES:
- THIS DRAWING IS COPYRIGHT
  - DO NOT SCALE DIMENSIONS FROM DRAWING
  - ANY DISCREPANCIES ON DRAWING TO BE REPORTED TO NIGHTINGALE ASSOCIATES
  - DO NOT MODIFY DRAWING
  - USE DRAWING ONLY FOR PURPOSE(S) ISSUED



- KEY:
- FIBRE CEMENT CLADDING PANEL (MARLEY ETERNIT NATURA)
  - EXTRUDED ALUMINIUM LOUVRE BLADES IN EXTRUDED ALUMINIUM SECTION FRAMES
  - COMPOSITE METAL FACED PIR INSULATION PANEL SYSTEM
  - HORIZONTAL STACK BOND ROMAN BRICK
  - GLAZING TO FRONT ELEVATION AT GF & FF LEVEL: SAINT GOBAIN GLASS SGG LITEWALL ISO STRUCTURAL GLASS SYSTEM, DOUBLE GLAZED UNITS.
  - GLAZING TO FRONT ELEVATION AT 2ND, 3RD & 4TH FLOOR LEVEL: TECHNAL MX TOGGLE GLAZED SYSTEM INCLUDING FIXED CURVED GLAZING WITH HORIZONTAL CAP
  - GLAZING TO DAULBY STREET ELEVATION: TECHNAL MX GD CURTAIN WALLING VISIBLE GRID WITH FRITTING ON THE GLAZING
  - GLAZING TO DUNCAN BUILDING ELEVATION: TECHNAL MX GD CURTAIN WALLING VISIBLE GRID WITH SPANDREL PANELS
  - AUTOMATED CURVED SLIDING DOORS TO MAIN ENTRANCE
  - AUTOMATED SLIDING DOORS TO STAFF ENTRANCE
  - FACTORY FINISHED STEEL DOORSETS WITH OVERPANELS COMPLETE WITH SS IRONMONGERY AND WEATHERSTRIPPING
  - 500mm DEEP BAILEYS ALUMINIUM INSULATED CASSETTE CLADDING AT EACH SLAB LEVEL TO ALL ELEVATIONS. ALSO TO PRESCOT ST. ELEVATION AT TRUSS LEVEL.

No Design Risk Register

Rev Date Revision Notes  
Client / Contractor

**NIGHTINGALE** architects  
associates ■■■■■ www.nightingaleassociates.com

Project  
LIVERPOOL BIO INNOVATION CENTRE

Drawing Title  
DAULBY STREET ELEVATION  
DUNCAN BUILDING ELEVATION

Job No 10770 Date 25/11/11 Scale@A1 1:200  
Status

Drawing No						Rev
Origin	Zone	Level	Type	Content	Sequential	
AR	XX	XX	EL	251	010	A