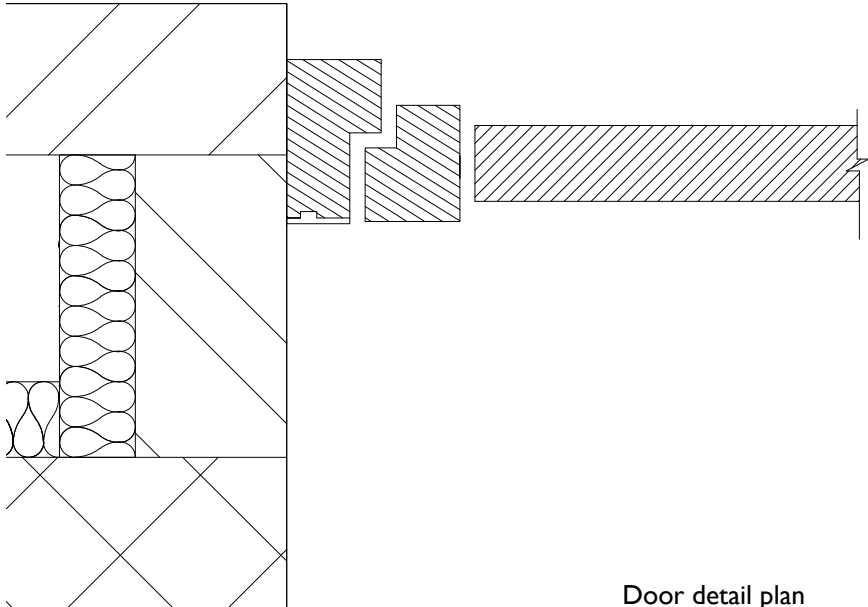


White painted RAL 9001  
existing concrete lintel

Obscured triple glazing  
Acoustic performance 43 decibels

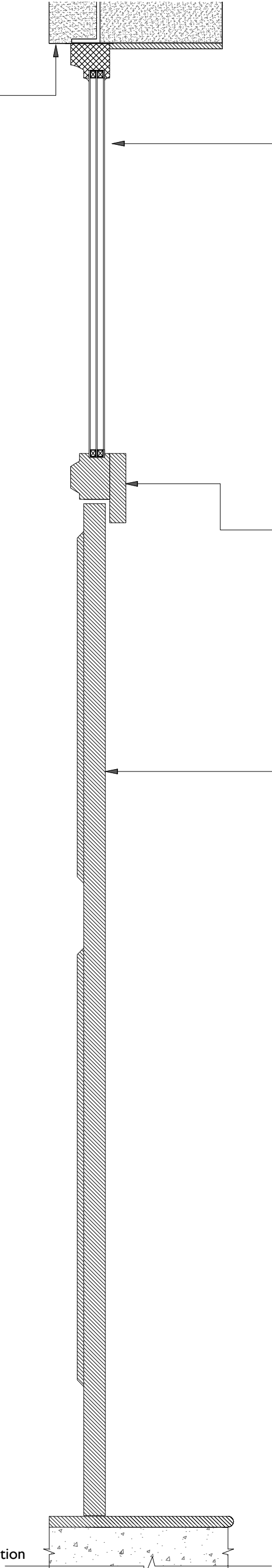
New timber frame door  
to match existing design

Wooden framing



Door detail plan  
scale 1.5

Type I Door detail section  
scale 1.10



Note: Pursuant to condition 5

<div>Revision</div>	<div>Description</div>	<div>Date</div>	<div>Project Jamaica Hotel 142-144 Upper Parliament Street Liverpool L8 7LG</div>	<div>Drawing Name Proposed new doors</div>	<div><div>Suburban</div><div>www.suburbanstudios.co.uk</div><div>COOMBE FARM, CR0 5HL 020-8654-2310 info@suburbanstudios.co.uk</div><div>Studios</div></div>	<div>Job No</div> 090502	<div>Date</div> 12/06/15
						<div>Drawing Number</div> AP207 - 1	<div>Rev</div>
						<div>Scale</div> 1:5;1:10 @ A3	
						<div>Drawn:</div> SNR	<div>Checked:</div> DV
						<div>DO NOT SCALE FROM THIS DRAWING: Any drawing errors or divergences should be brought to the attention of SubUrban Studios at the address shown.</div>	