



PROPOSED FRONT ELEVATION

NB ALL WINDOWS TO BASEMENT, GROUND, FIRST AND SECOND FLOORS TO BE TIMBER VERTICAL SLIDING SASH AND DORMER WINDOWS TO BE TIMBER FRAME INWARD OPENING

Rain water gutters and down pipes to match the existing pipes (black painted cast iron)

CCTV cameras

Proposed cable runs
Note: All cable runs to be clipped to facade and to match in colour (black at rear, white at front)

CCTV orientation angle

Access to meter cupboards

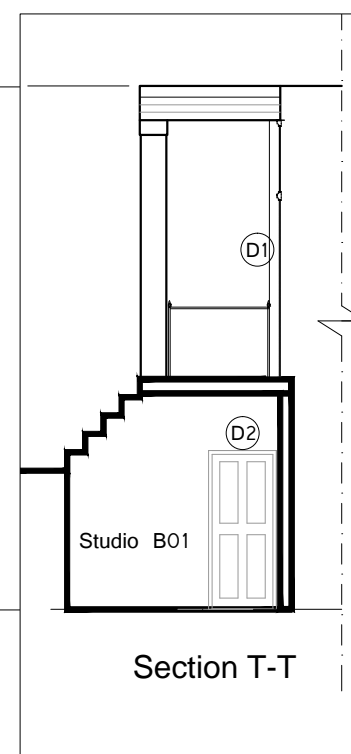
DOOR SCHEDULE

TYPE	SKETCH	COUNT. (pcs.)
D1		2
D2		2

Note: Height are approximative, before manufacture measure to match existing window height
Timber frame, colour - white

WINDOW SCHEDULE

TYPE	SKETCH	COUNT. (pcs.)
W -1		4
W -2		2
W -3		8
W -4		6
W -5		4
W -6		4



		<div>Project</div> <div>Jamaica Hotel 142-144 Upper Parliament Street Liverpool L8 7LG</div>	<div>Drawing Name</div> <div>Proposed Upper Parliament Street frontage (below pavement level)</div>	<div><div>Suburban Studios</div><div>www.suburbanstudios.co.uk</div><div>COOMBE FARM, CR0 5HL 020-8654-2310 info@suburbanstudios.co.uk</div></div>	Job No	090502	Date	12/06/15
					Drawing Number	090502-AP108	Rev	
					Scale	1:100 @A3		
					Drawn:	gsw, SR	Checked:	DV, AS
Revision	Description				Date	DO NOT SCALE FROM THIS DRAWING: Any drawing errors or divergences should be brought to the attention of SubUrban Studios at the address shown.		