

Scale 1:5,000

Viewpoint DW8: View looking west along Blackstone Street

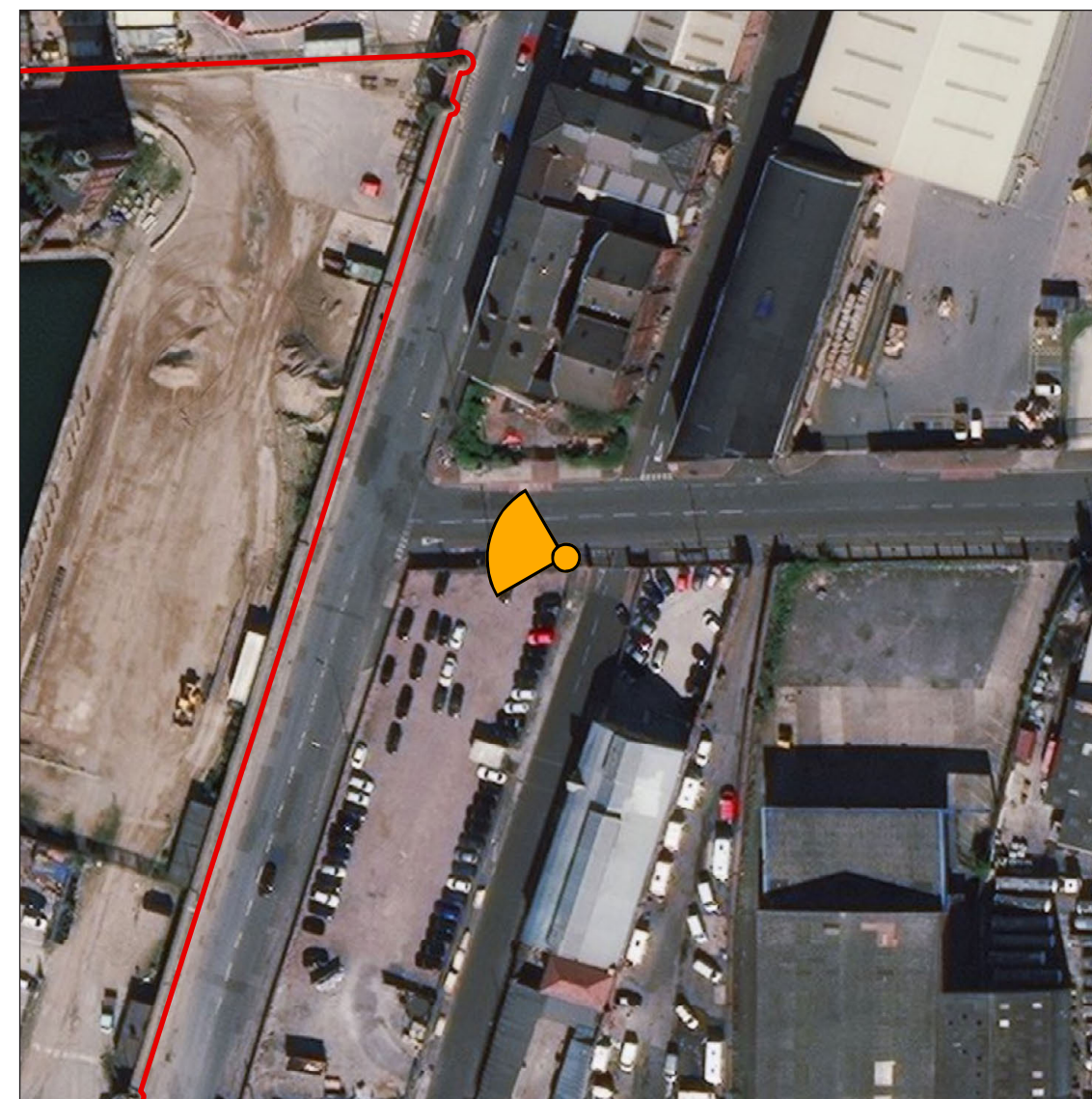
Viewpoint information:

OS reference: 333705, 392503.25

Ground level: 6.7m AOD

Direction of view: 285°

Distance to site: 42m



Scale 1:1,250

© Crown copyright and database rights 2020 Ordnance Survey 0100031673.
Aerial Source: Esri, DigitalGlobe, GeoEye, Earthstar Geographics, CNES/Airbus DS,
USDA, USGS, AeroGRID, IGN, and the GIS User Community.

**Dock Wall Photographs &
Accurate Visual Representations**

DW.8.0

Project no. A100795
The People's Project

August 2020

**Everton Stadium
Development
Limited**





Baseline Photograph

View flat at a comfortable arm's length

Viewpoint information:		Horizontal field of view:	90° (cylindrical projection)	Correct printed image size:	820 x 250mm
OS reference:	333705, 392503.25	Vertical field of view:	27°	Camera:	EOS 6D Mk II
Ground level:	6.7m AOD	Enlargement factor:	96%	Lens:	50mm (Canon EF 24-70mm f/4L IS USM)
Direction of view:	285°	Principal distance:	812.5mm	Camera height:	1.6m AGL
Distance to site:	42m	Paper size:	840 x 297mm (extended A3)	Date and time:	17/12/19 14:24

Viewpoint DW8: View looking west along Blackstone Street

Revision	
A	Sheet layout updated

21/08/20

Dock Wall Photographs & Accurate Visual Representations

DW.8.1[A]

Project no. **A100795**
The People's Project

August 2020



Type 4 Visualisation - Photomontage

View flat at a comfortable arm's length

N.B. Materials/specification of highways works to be confirmed with LCC as part of a Section 278 Agreement

Viewpoint information:		Horizontal field of view:	90° (cylindrical projection)	Correct printed image size:	820 x 250mm
OS reference:	333705, 392503.25	Vertical field of view:	27°	Camera:	EOS 6D Mk II
Ground level:	6.7m AOD	Enlargement factor:	96%	Lens:	50mm (Canon EF 24-70mm f/4L IS USM)
Direction of view:	285°	Principal distance:	812.5mm	Camera height:	1.6m AGL
Distance to site:	42m	Paper size:	840 x 297mm (extended A3)	Date and time:	17/12/19 14:24

Viewpoint DW8: View looking west along Blackstone Street

Revision		
A	Sheet layout updated, photomontage updated for revised stadium design	21/08/20
B	Photomontage updated for cycleway	20/10/20
C	Cycleway colour updated	11/11/20

Dock Wall Photographs & Accurate Visual Representations

dw.8.2[c]

Project no. A100795
The People's Project

November 2020