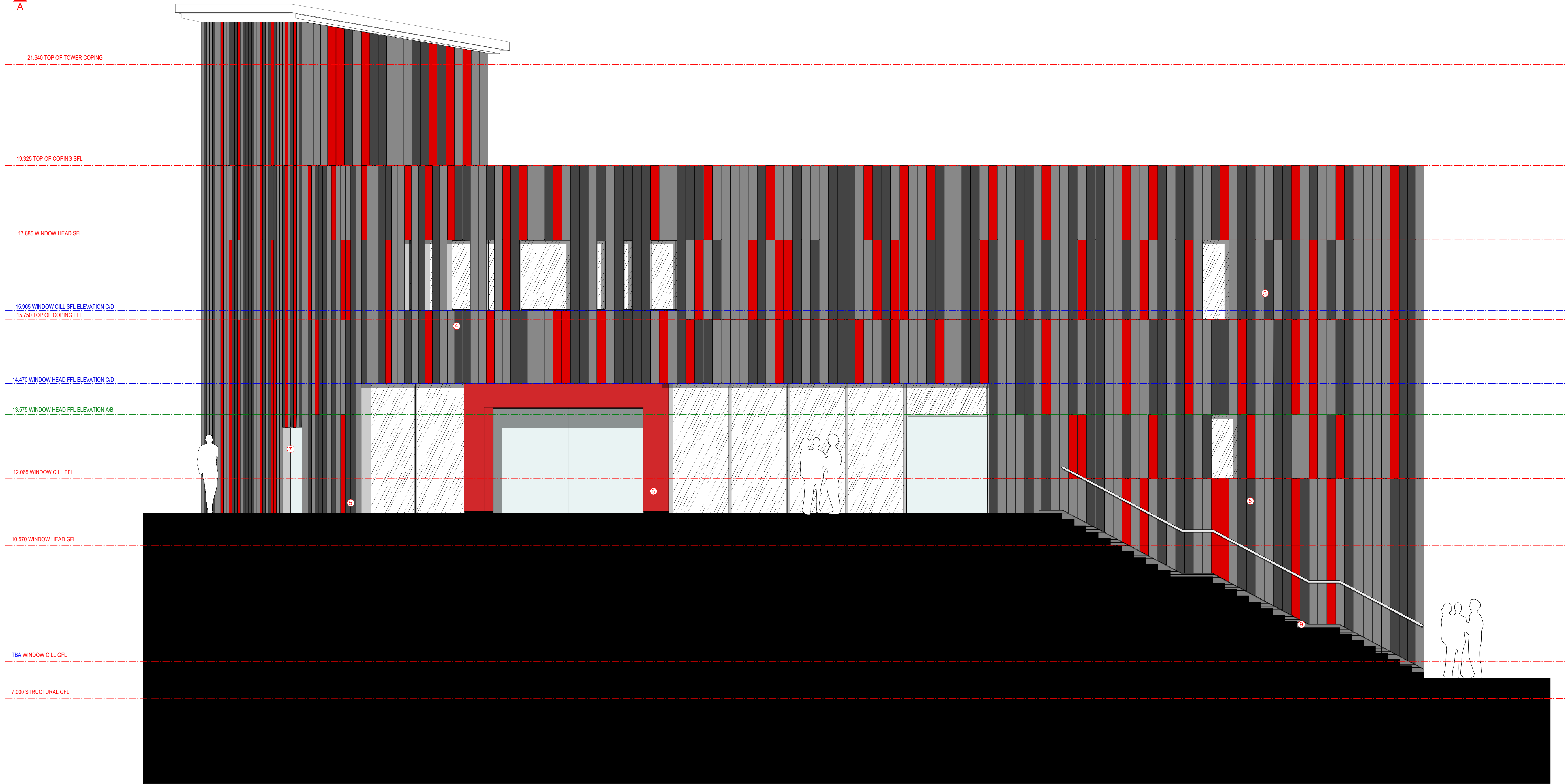
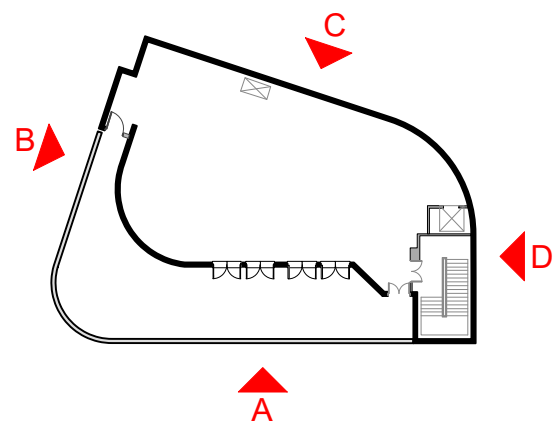
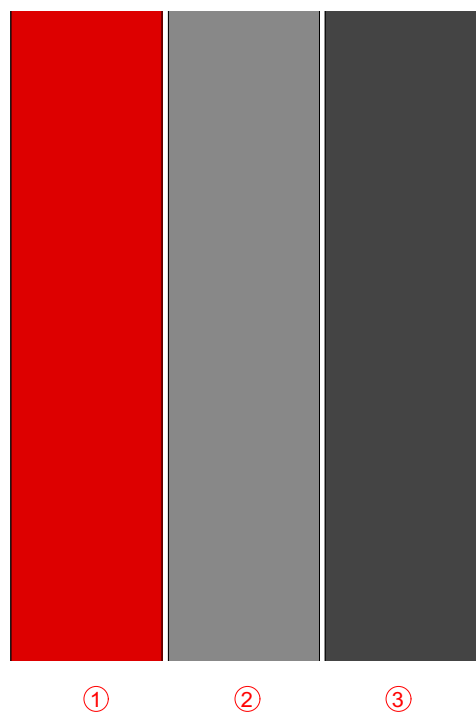


Elevation Key:



ELEVATION C



Material Key

- ① RAL 9006 (LED lit panel with perforation, see 969-D-30 for details)
- ② RAL 29/90003 cladding panel
- ③ ALESTA Grey Tenor 2 cladding panel
- ④ Retained existing windows (repainted frames in Anthracite Grey RAL 7016)
- ⑤ Proposed new windows
- ⑥ Powder coated alu. door surround Dulux 311YR 10/591
- ⑦ Powder coated alu. door surround pantone 202c
- ⑧ Retained existing doors (repainted frames in Anthracite Grey RAL 7016)
- ⑨ Retained existing blue-glazed bricks

CONSTRUCTION

DK-Architects

Job: 969 Rat and Parrot
Client: Neptune
Drawing Title: Elevation C Cladding Layout
Date: 08.08.2015
Drawing no: 969-E-04B
Scale: 1:50 @ A1
Drawn: IP

Revision table:
A: Approved panel arrangement on elevation A to ensure window units are a single colour 18.08.15
B: New windows and cladding layout on 17.09.2015 (revised) 18.08.15
C: Finalised panel arrangement on elevation C 18.08.15
D: Finalised panel arrangement on elevation D 18.08.15
E: Finalised panel arrangement on elevation E 18.08.15
F: Finalised panel arrangement on elevation F 18.08.15
G: Finalised panel arrangement on elevation G 18.08.15
H: Finalised panel arrangement on elevation H 18.08.15
I: Finalised panel arrangement on elevation I 18.08.15
J: Finalised panel arrangement on elevation J 18.08.15
K: Finalised panel arrangement on elevation K 18.08.15
L: Finalised panel arrangement on elevation L 18.08.15
M: Finalised panel arrangement on elevation M 18.08.15
N: Finalised panel arrangement on elevation N 18.08.15
O: Finalised panel arrangement on elevation O 18.08.15
P: Finalised panel arrangement on elevation P 18.08.15
Q: Finalised panel arrangement on elevation Q 18.08.15
R: Finalised panel arrangement on elevation R 18.08.15
S: Finalised panel arrangement on elevation S 18.08.15
T: Finalised panel arrangement on elevation T 18.08.15
U: Finalised panel arrangement on elevation U 18.08.15
V: Finalised panel arrangement on elevation V 18.08.15
W: Finalised panel arrangement on elevation W 18.08.15
X: Finalised panel arrangement on elevation X 18.08.15
Y: Finalised panel arrangement on elevation Y 18.08.15
Z: Finalised panel arrangement on elevation Z 18.08.15