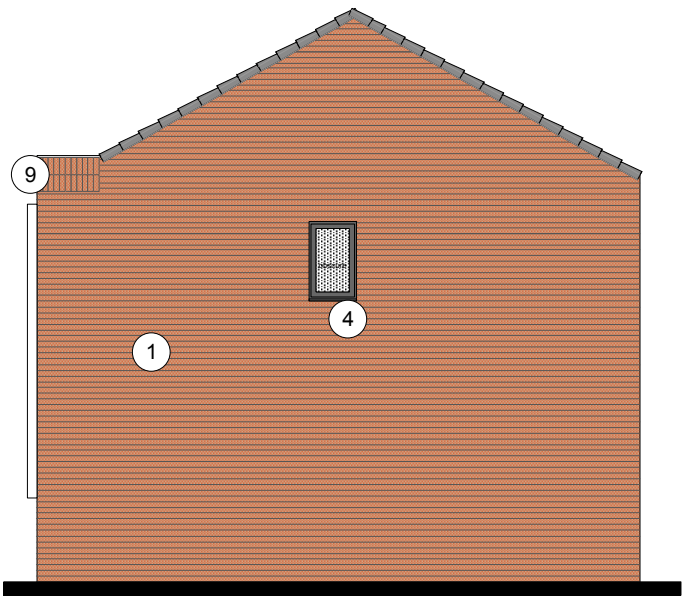
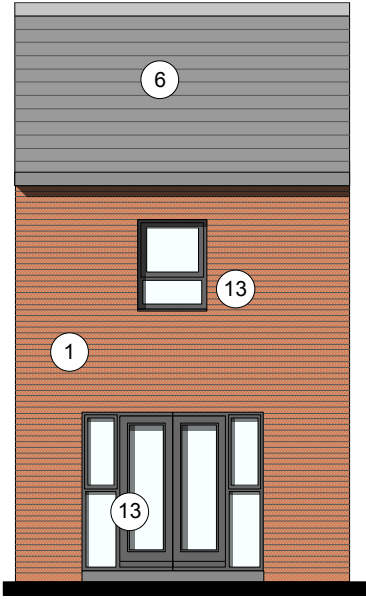


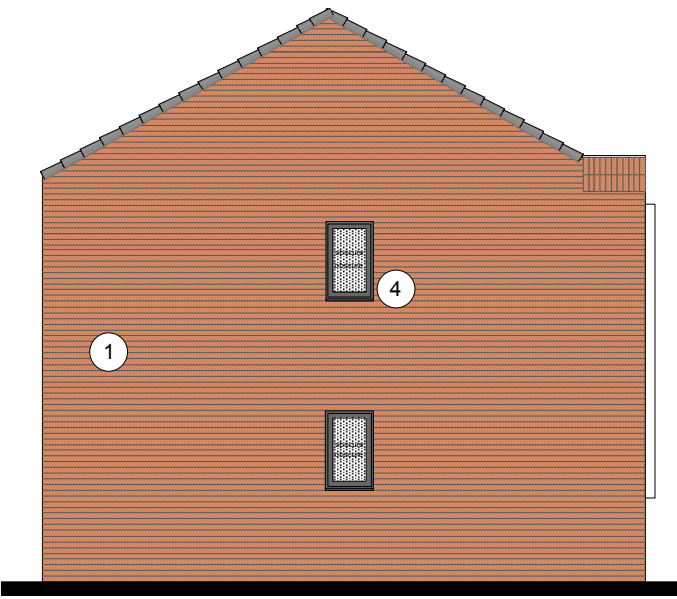
Front Elevation



Side Elevation A



Rear Elevation



Side Elevation B

MATERIAL KEY

[1] MAIN FACING MATERIAL : VARIES ACROSS SITE BETWEEN 2 COMPLIMENTARY FINISHES TO GENERATE CHARACTER VARIATIONS : REFER TO MATERIAL KEY DRAWING

COMPRISING

- i] MARLBOROUGH STOCK RED / BROWN MULTI BY IBSTOCK or similar
- ii] WHITE RENDER or similar

ALL BRICKWORK UP TO DPC TO BE STAFF SLATE BLUE or similar

[2] FEATURE SOLDIER BRICKWORK IN MAIN FACING BRICK

[3] CONTRASTING FACING BRICKWORK TO BE STAFF SLATE BLUE BY IBSTOCK or similar

[4] RAL 7016 [ANTHRACITE GREY] UPVC WINDOWS [WHITE INTERNAL].

[5] RAL 7016 [ANTHRACITE GREY] FIBRE CEMENT BOARD BY ROCKCLAD OR SIMILAR

[6] ROOF TILES TO BE GRAMPIAN SLATE GREY BY RUSSELL or similar

[7] WHITE POWDER COATED ALUMINIUM SURROUND TO FORM PROJECTING WINDOW FRAME

[8] WHITE RENDER BAY WITH RAL 7016 UPVC WINDOW SET IN

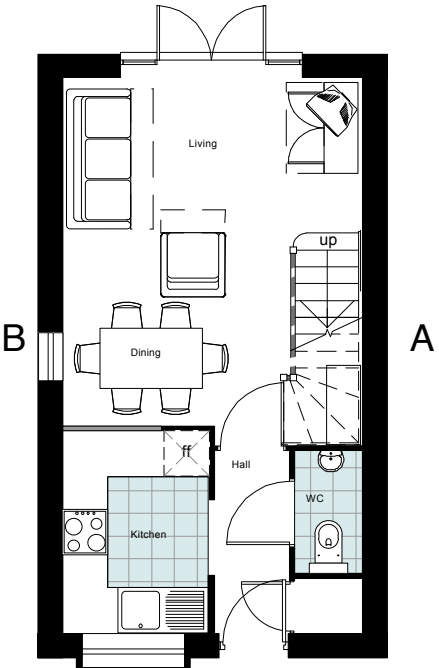
[9] SOLDIER BRICKWORK IN FACING BRICK

[10] FRONT DOORSET IN COLOUR PAINT FINISH TBC

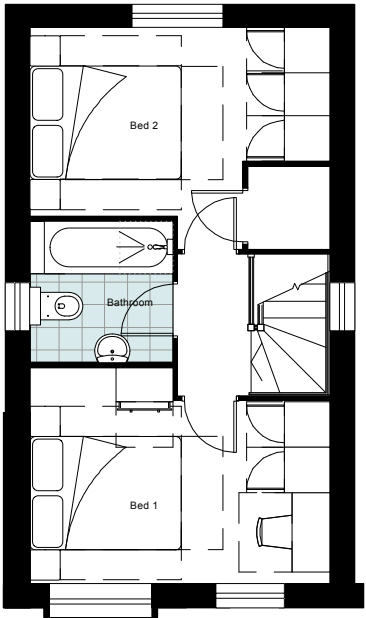
[11] BALUSTRADING TO ROOF TERRACE TO BE GLASS

[12] PROJECTING BALCONY IN GLASS WITH RAL 7016 PAINTED STEEL SUPPORT.

[13] REAR WINDOWS TO BE IN WHITE UPVC



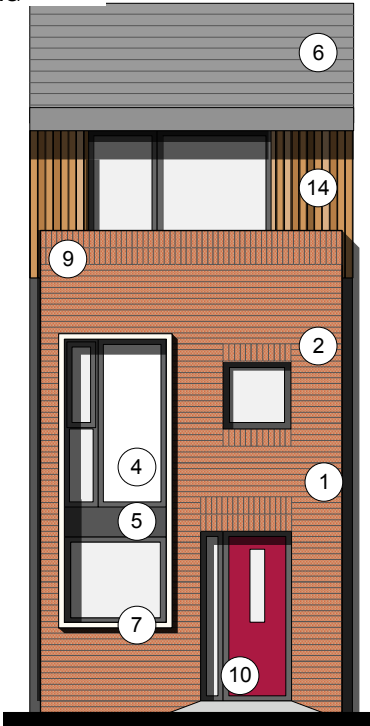
Ground Floor Plan



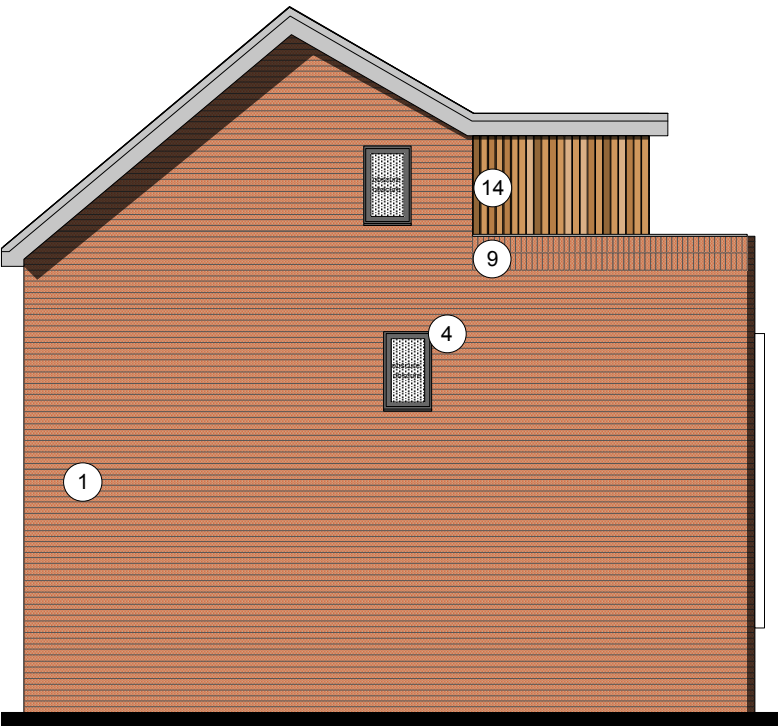
First Floor Plan

SITE PLAN COLOUR KEY

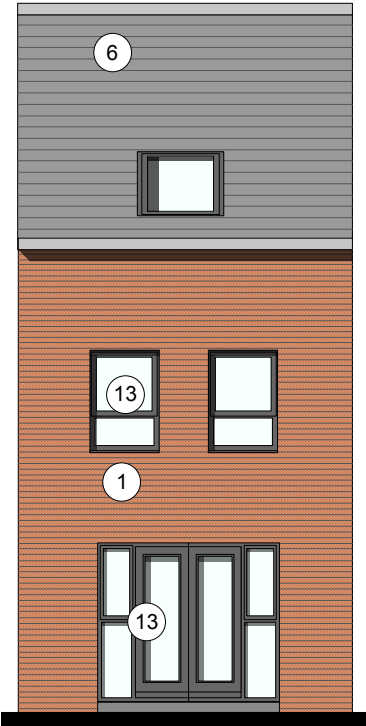




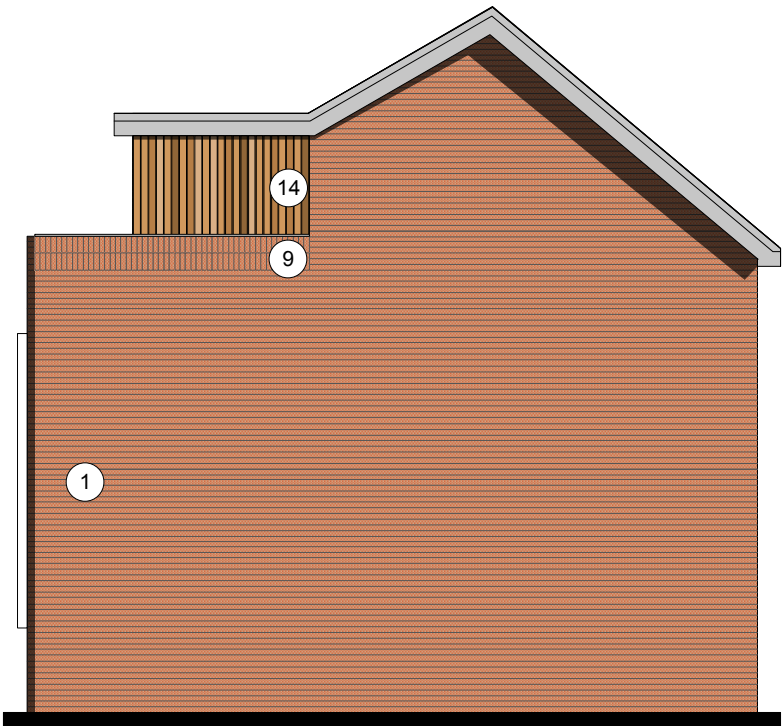
Front Elevation



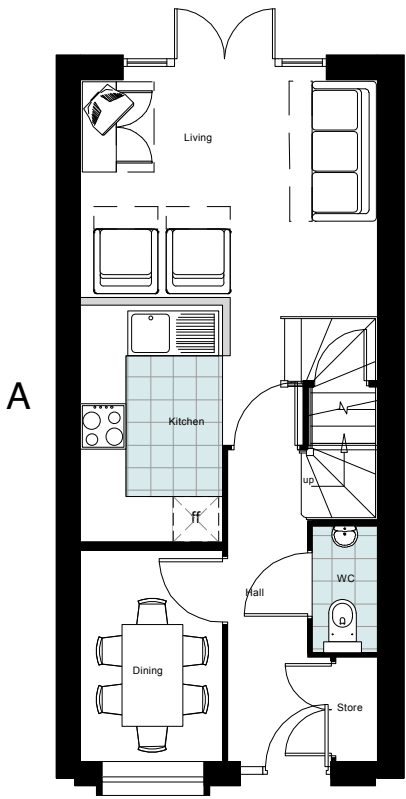
Side Elevation A



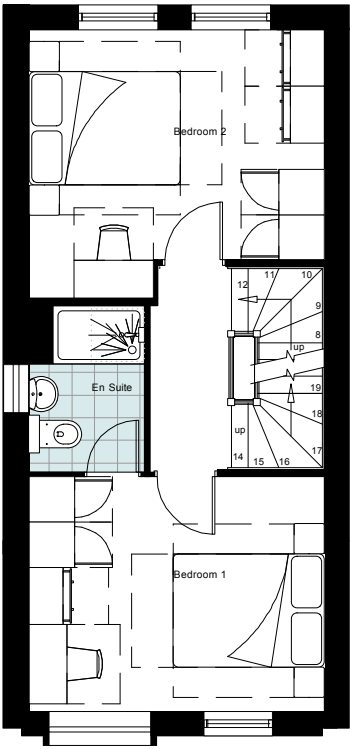
Rear Elevation



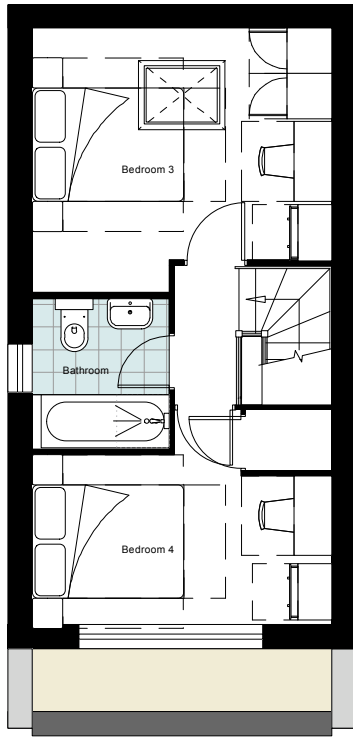
Side Elevation B



Ground Floor Plan



First Floor Plan



Second Floor Plan

SITE PLAN COLOUR KEY



MATERIAL KEY

[1] MAIN FACING MATERIAL : VARIES ACROSS SITE BETWEEN 2 COMPLIMENTARY FINISHES TO GENERATE CHARACTER VARIATIONS : REFER TO MATERIAL KEY DRAWING

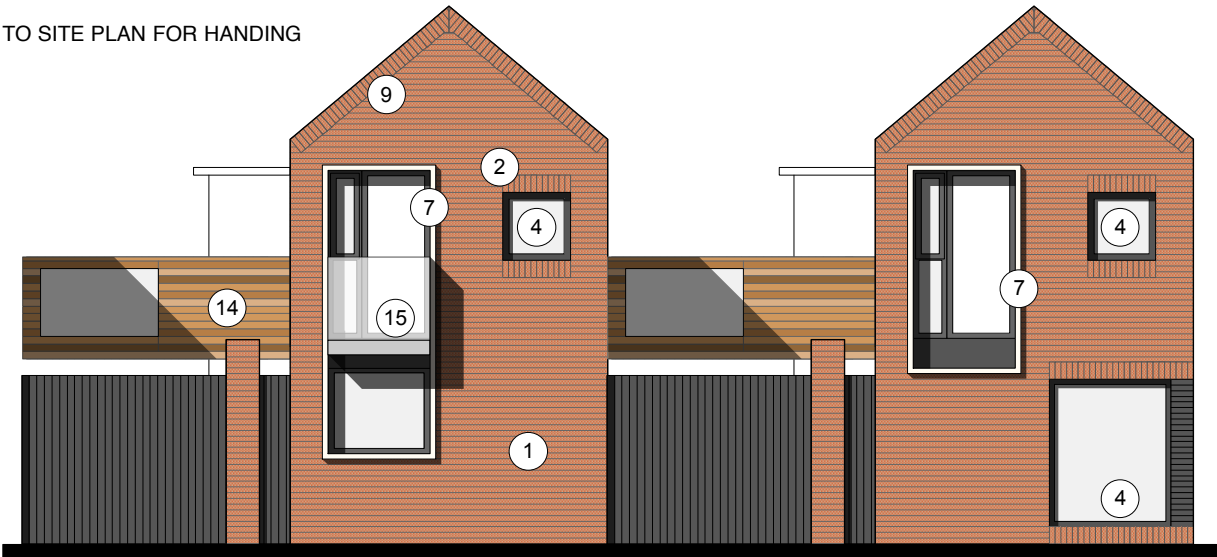
COMPRISING

- i] MARLBOROUGH STOCK RED / BROWN MULTI BY IBSTOCK or similar
- ii] WHITE RENDER or similar

ALL BRICKWORK UP TO DPC TO BE STAFF SLATE BLUE or similar

- [2] FEATURE SOLDIER BRICKWORK IN MAIN FACING BRICK
- [3] CONTRASTING FACING BRICKWORK TO BE STAFF SLATE BLUE BY IBSTOCK or similar
- [4] RAL 7016 [ANTHRACITE GREY] UPVC WINDOWS [WHITE INTERNAL].
- [5] RAL 7016 [ANTHRACITE GREY] FIBRE CEMENT BOARD BY ROCKCLAD OR SIMILAR
- [6] ROOF TILES TO BE GRAMPIAN SLATE GREY BY RUSSELL or similar
- [7] WHITE POWDER COATED ALUMINIUM SURROUND TO FORM PROJECTING WINDOW FRAME
- [8] WHITE RENDER BAY WITH RAL 7016 UPVC WINDOW SET IN
- [9] SOLDIER BRICKWORK IN FACING BRICK
- [10] FRONT DOORSET IN COLOUR PAINT FINISH TBC
- [11] BALUSTRADING TO ROOF TERRACE TO BE GLASS
- [12] PROJECTING BALCONY IN GLASS WITH RAL 7016 PAINTED STEEL SUPPORT.
- [13] REAR WINDOWS TO BE IN WHITE UPVC
- [14] STAINED SOFTWOOD TIMBER

REFER TO SITE PLAN FOR HANDING



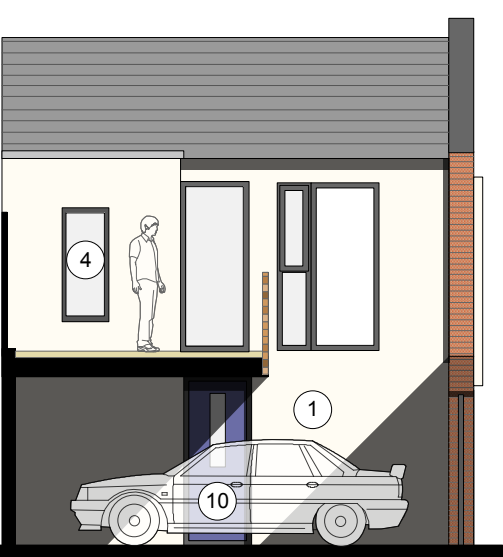
Front Elevation type 1

Front Elevation type 2

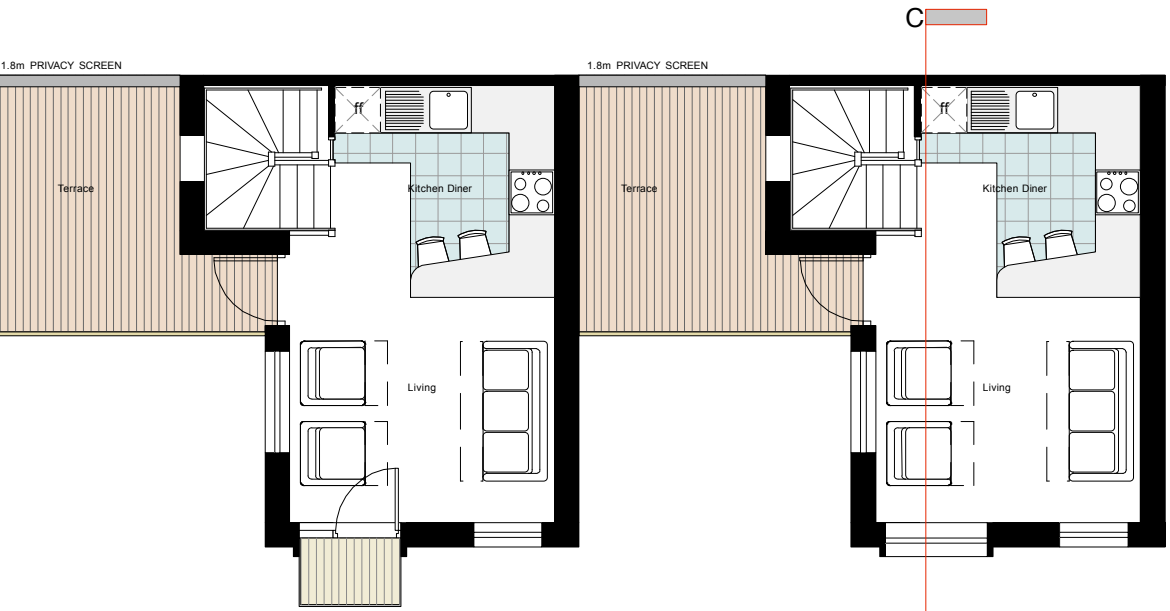


End Gable Elevation type 3

End Gable Elevation type 4

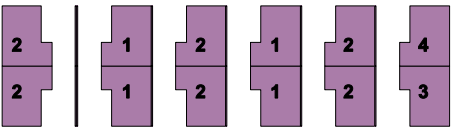


Sectional Elevation CC



First Floor Plan type 1

First Floor Plan type 2

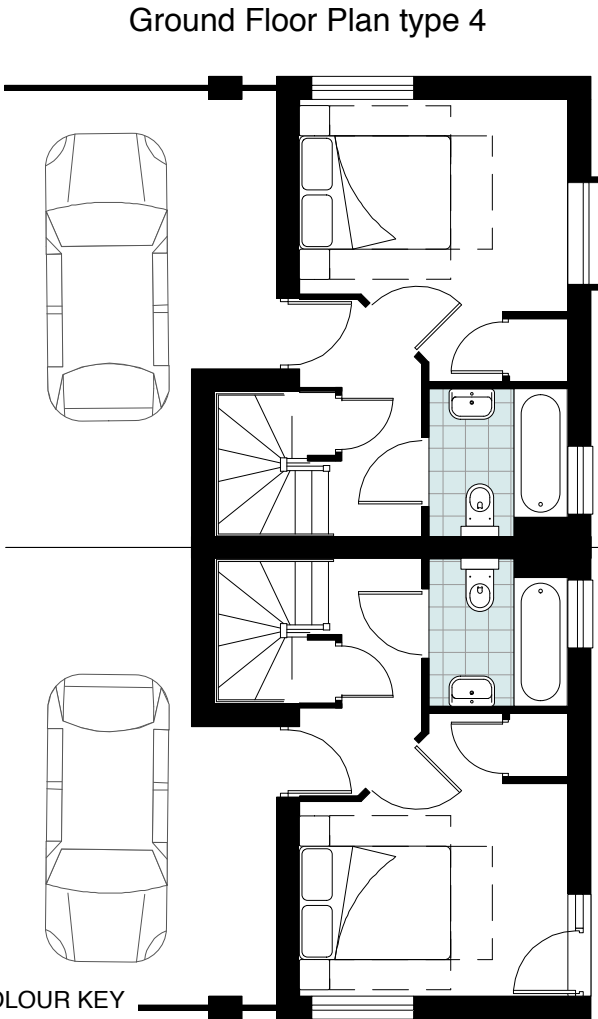


Type 1 Plot Nos
244, 246, 251, 253

Type 2 Plot Nos
243, 245, 247, 250, 252, 254

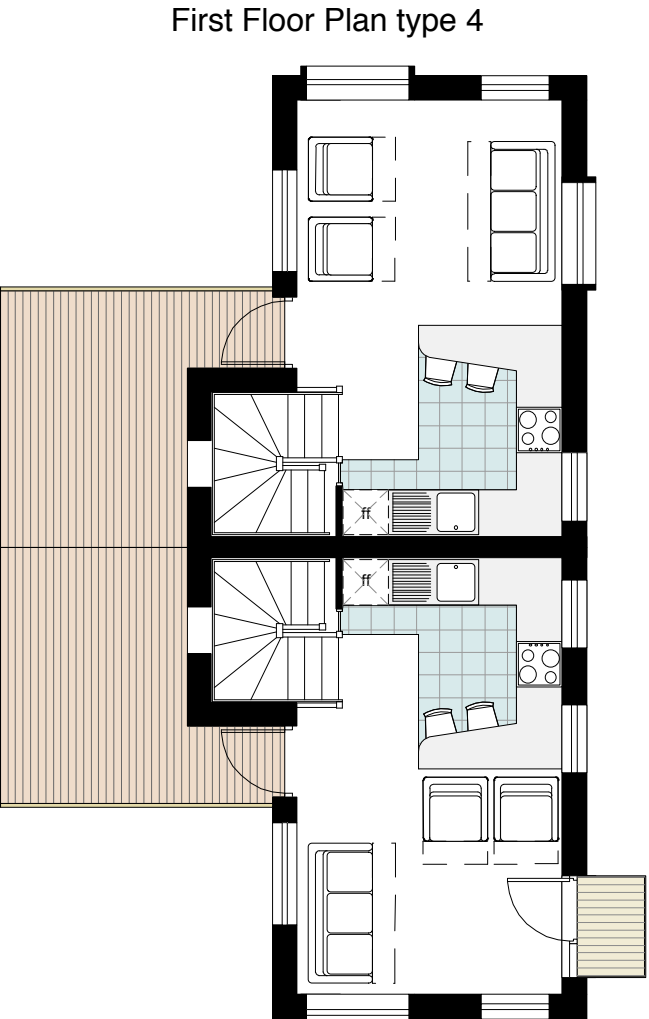
Type 3 Plot No
248

Type 4 Plot No
249



Ground Floor Plan type 4

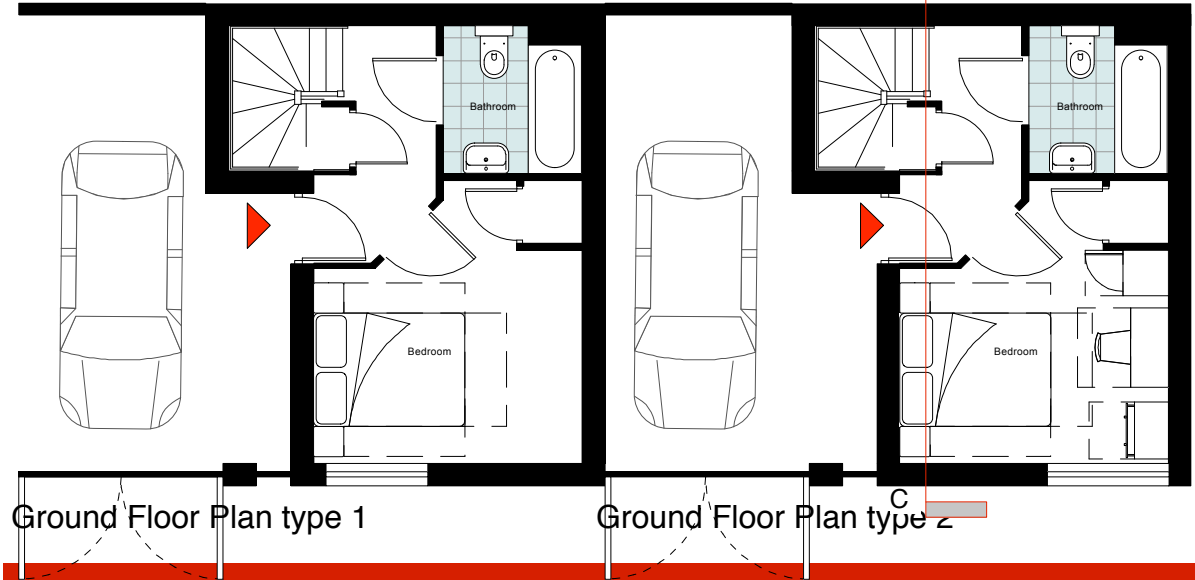
Ground Floor Plan type 3



First Floor Plan type 4

First Floor Plan type 3

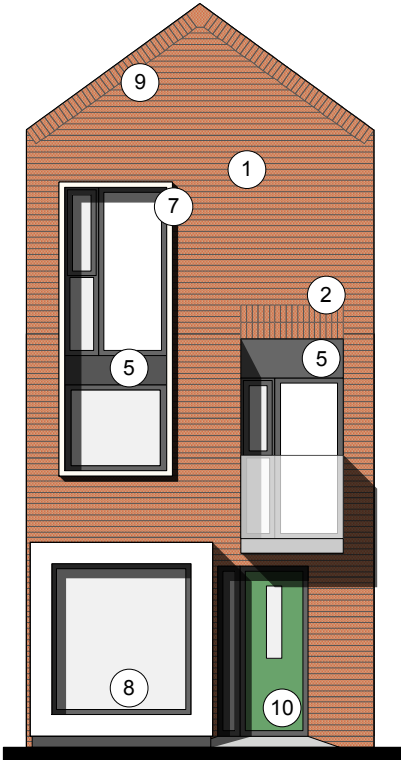
SITE PLAN COLOUR KEY



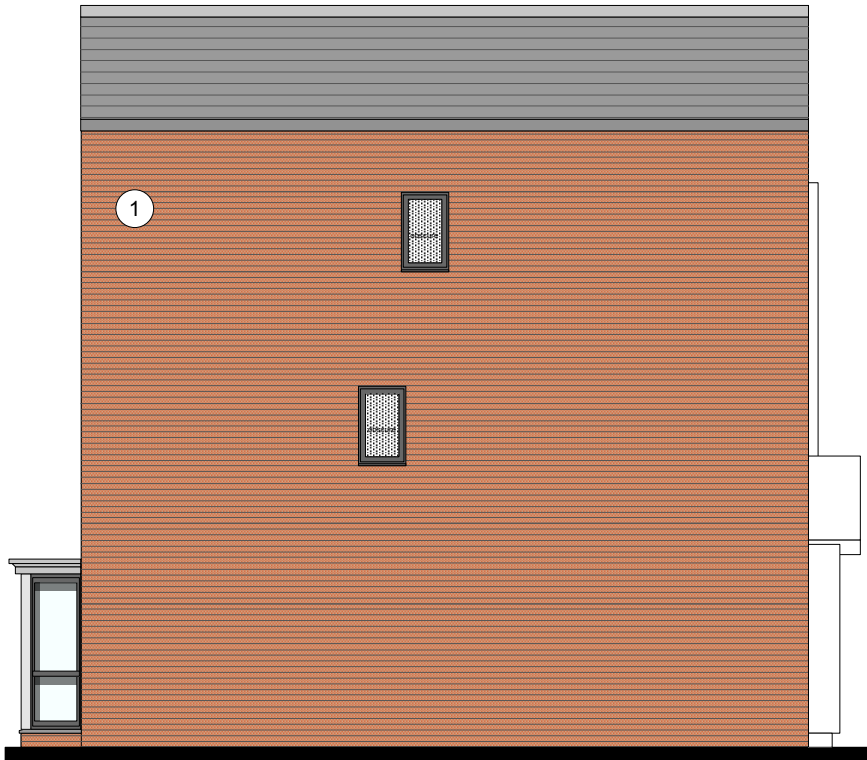
Ground Floor Plan type 1

Ground Floor Plan type 2

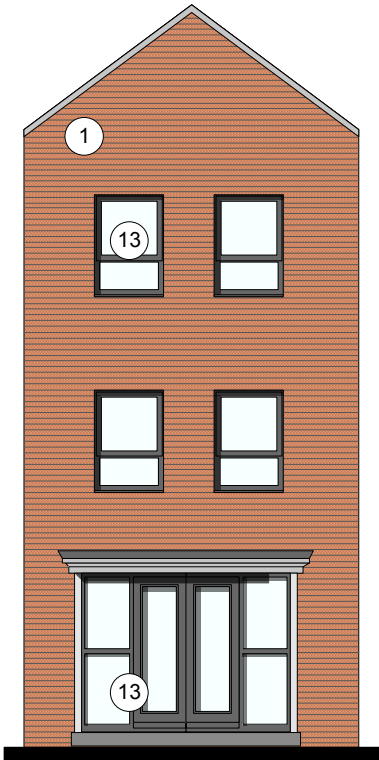




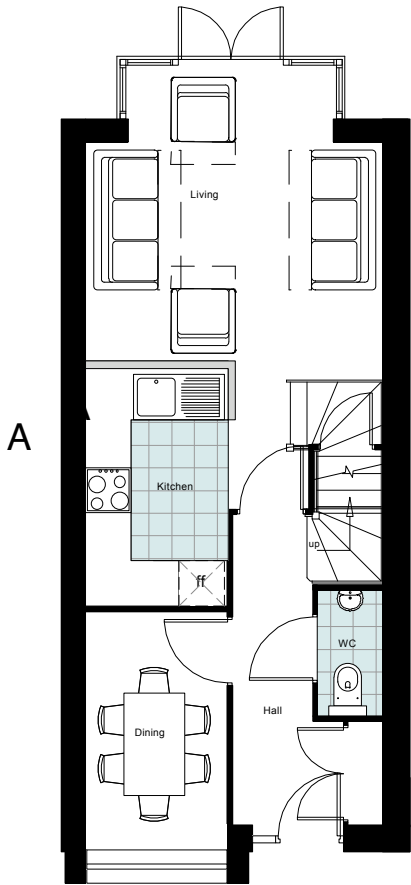
Front Elevation



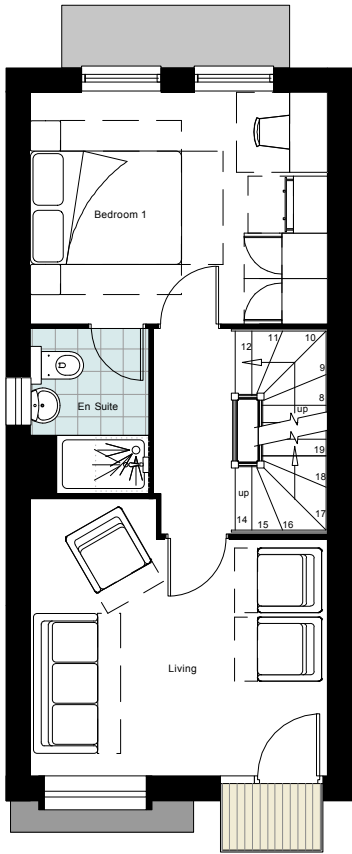
Side Elevation A



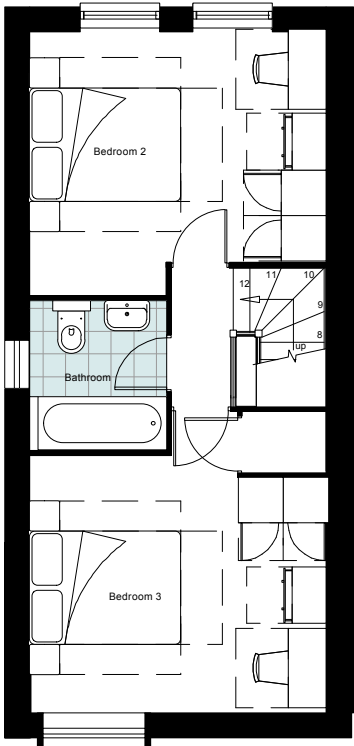
Rear Elevation



Ground Floor Plan



First Floor Plan



Second Floor Plan

SITE PLAN COLOUR KEY



MATERIAL KEY

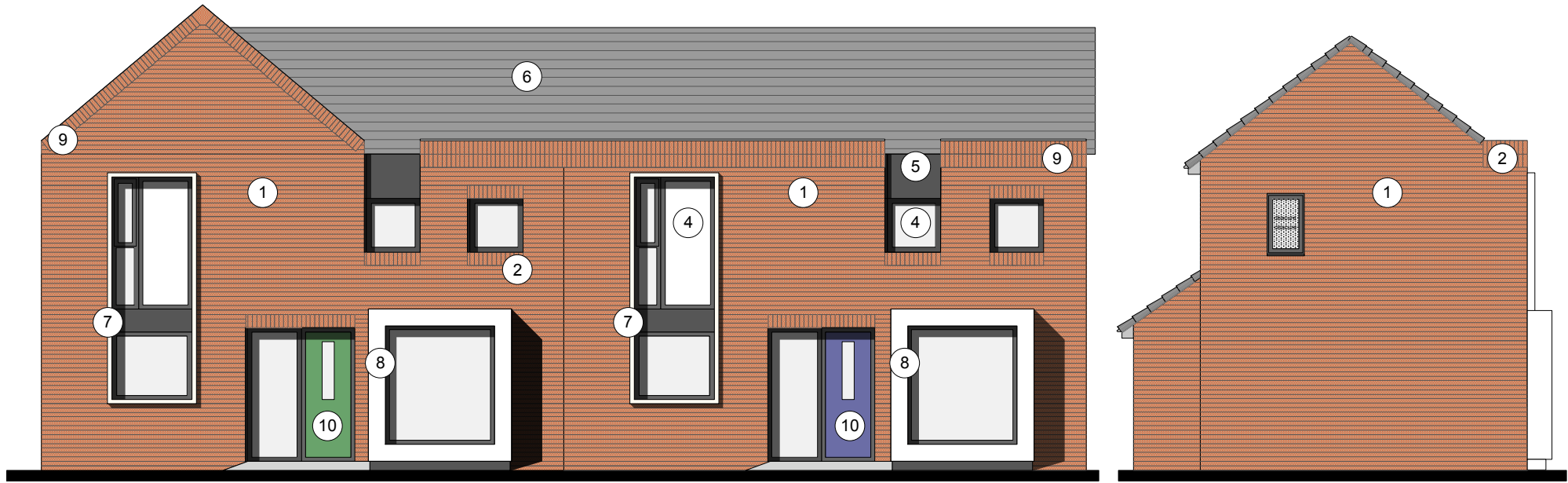
[1] MAIN FACING MATERIAL : VARIES ACROSS SITE BETWEEN 2 COMPLIMENTARY FINISHES TO GENERATE CHARACTER VARIATIONS : REFER TO MATERIAL KEY DRAWING

COMPRISING

- i] MARLBOROUGH STOCK RED / BROWN MULTI BY IBSTOCK or similar
- ii] WHITE RENDER or similar

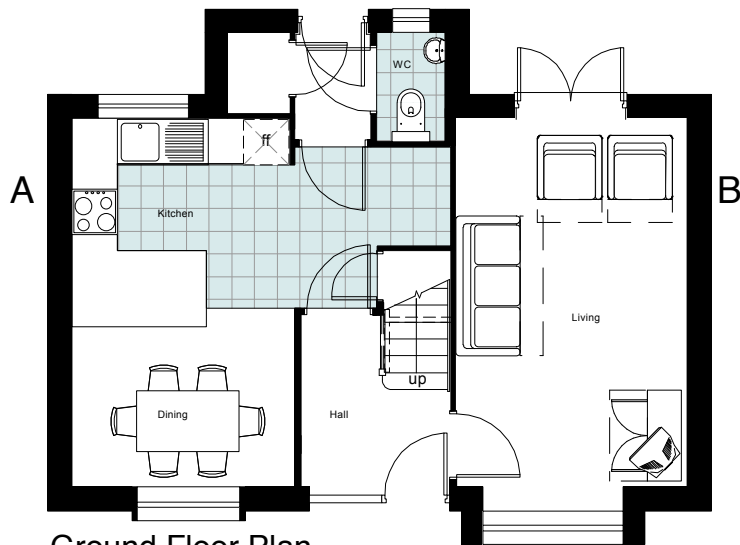
ALL BRICKWORK UP TO DPC TO BE STAFF SLATE BLUE or similar

- [2] FEATURE SOLDIER BRICKWORK IN MAIN FACING BRICK
- [3] CONTRASTING FACING BRICKWORK TO BE STAFF SLATE BLUE BY IBSTOCK or similar
- [4] RAL 7016 [ANTHRACITE GREY] UPVC WINDOWS [WHITE INTERNAL].
- [5] RAL 7016 [ANTHRACITE GREY] FIBRE CEMENT BOARD BY ROCKCLAD OR SIMILAR
- [6] ROOF TILES TO BE GRAMPIAN SLATE GREY BY RUSSELL or similar
- [7] WHITE POWDER COATED ALUMINIUM SURROUND TO FORM PROJECTING WINDOW FRAME
- [8] WHITE RENDER BAY WITH RAL 7016 UPVC WINDOW SET IN
- [9] SOLDIER BRICKWORK IN FACING BRICK
- [10] FRONT DOORSET IN COLOUR PAINT FINISH TBC
- [11] BALUSTRADING TO ROOF TERRACE TO BE GLASS
- [12] PROJECTING BALCONY IN GLASS WITH RAL 7016 PAINTED STEEL SUPPORT.
- [13] REAR WINDOWS TO BE IN WHITE UPVC
- [14] STAINED SOFTWOOD TIMBER
- [15] PROJECTING BALCONY IN GLASS WITH RAL 7016 PAINTED STEEL SUPPORT

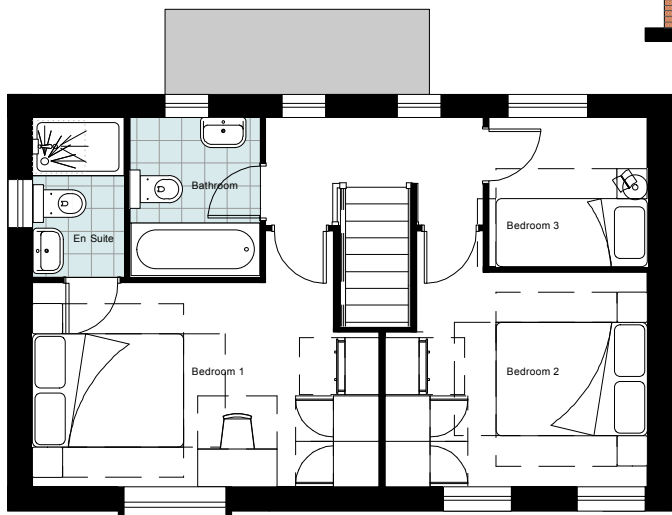


Front Elevation (Showing feature gable type and standard type)

SITE PLAN COLOUR KEY



Ground Floor Plan



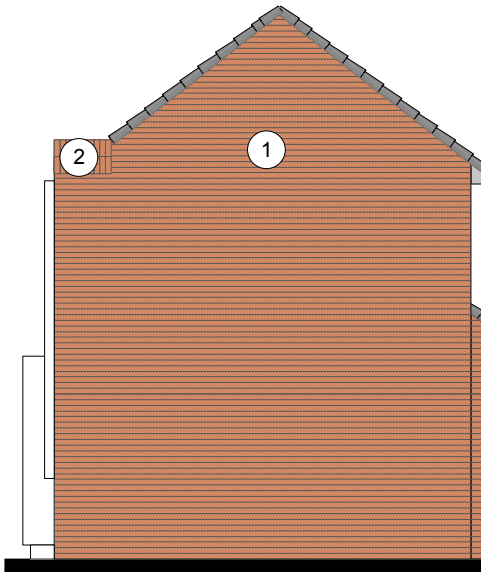
First Floor Plan



GABLE Elevation



Rear Elevation

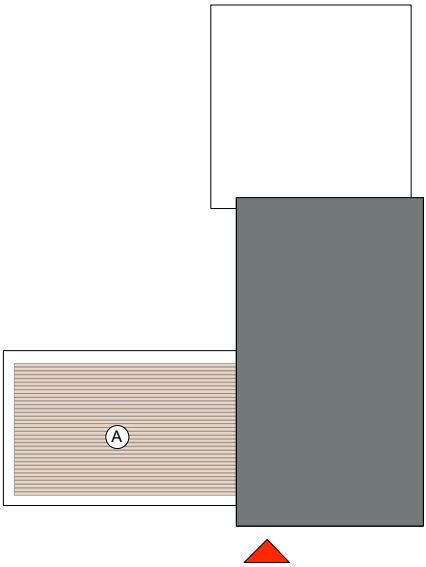


Side Elevation B

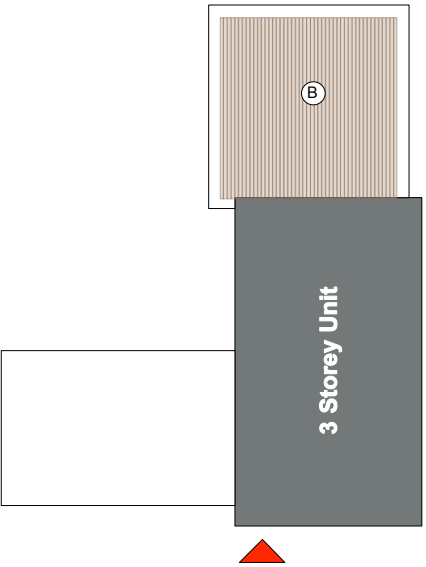
MATERIAL KEY

- [1] MAIN FACING MATERIAL : VARIES ACROSS SITE BETWEEN 2 COMPLIMENTARY FINISHES TO GENERATE CHARACTER VARIATIONS : REFER TO MATERIAL KEY DRAWING
- COMPRISING
- i] MARLBOROUGH STOCK RED / BROWN MULTI BY IBSTOCK or similar
- ii] WHITE RENDER or similar
- ALL BRICKWORK UP TO DPC TO BE STAFF SLATE BLUE or similar
- [2] FEATURE SOLDIER BRICKWORK IN MAIN FACING BRICK
- [3] CONTRASTING FACING BRICKWORK TO BE STAFF SLATE BLUE BY IBSTOCK or similar
- [4] RAL 7016 [ANTHRACITE GREY] UPVC WINDOWS [WHITE INTERNAL].
- [5] RAL 7016 [ANTHRACITE GREY] FIBRE CEMENT BOARD BY ROCKCLAD OR SIMILAR
- [6] ROOF TILES TO BE GRAMPIAN SLATE GREY BY RUSSELL or similar
- [7] WHITE POWDER COATED ALUMINIUM SURROUND TO FORM PROJECTING WINDOW FRAME
- [8] WHITE RENDER BAY WITH RAL 7016 UPVC WINDOW SET IN
- [9] SOLDIER BRICKWORK IN FACING BRICK
- [10] FRONT DOORSET IN COLOUR PAINT FINISH TBC
- [11] BALUSTRADING TO ROOF TERRACE TO BE GLASS
- [12] PROJECTING BALCONY IN GLASS WITH RAL 7016 PAINTED STEEL SUPPORT.
- [13] REAR WINDOWS TO BE IN WHITE UPVC
- [14] STAINED SOFTWOOD TIMBER
- [15] PROJECTING BALCONY IN GLASS WITH RAL 7016 PAINTED STEEL SUPPORT

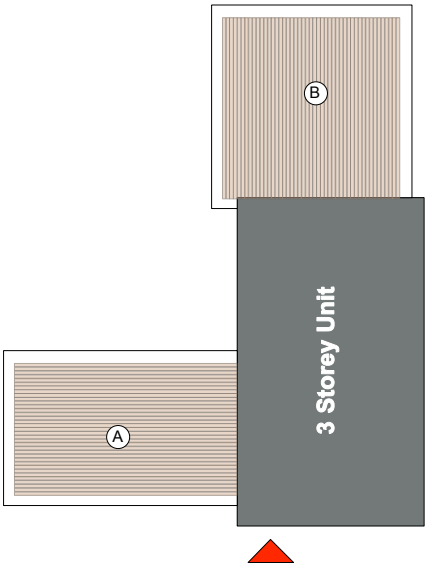
REFER TO SITE PLAN FOR HANDING



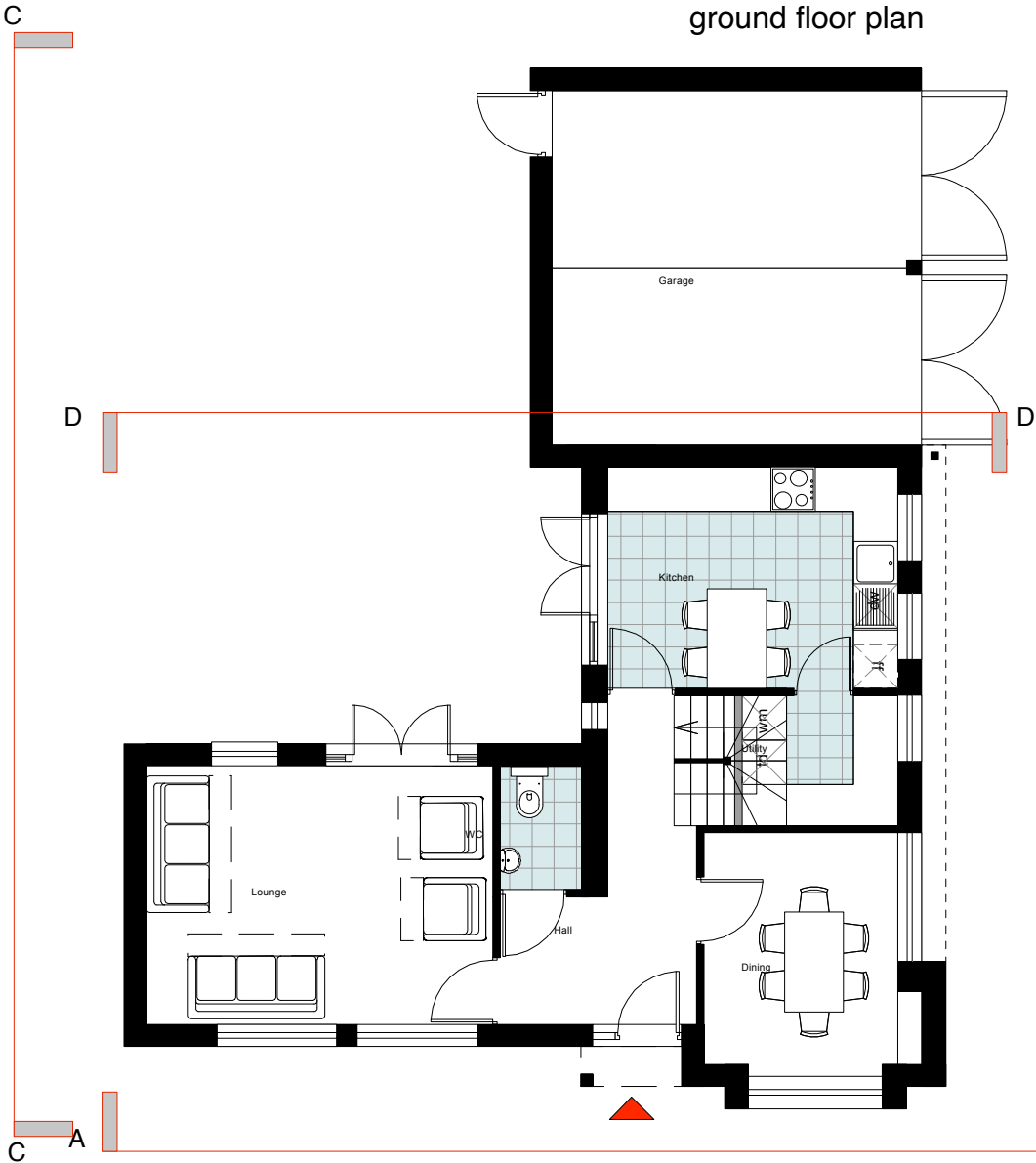
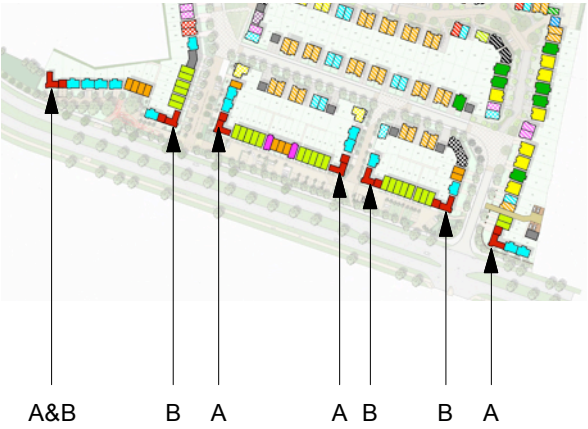
Terrace arrangement A
Plots 22, 38, 71



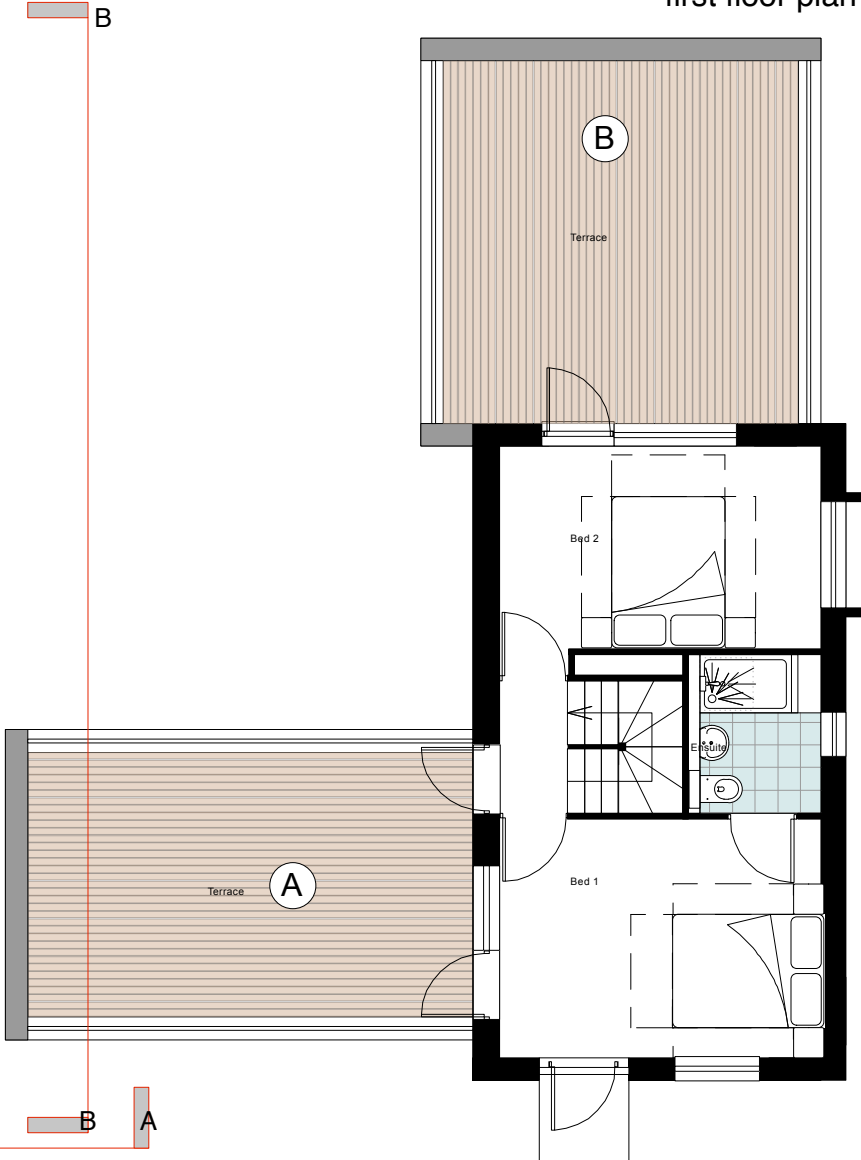
Terrace arrangement B
Plots 17,50,59



Terrace arrangement AB
Plot 1



ground floor plan



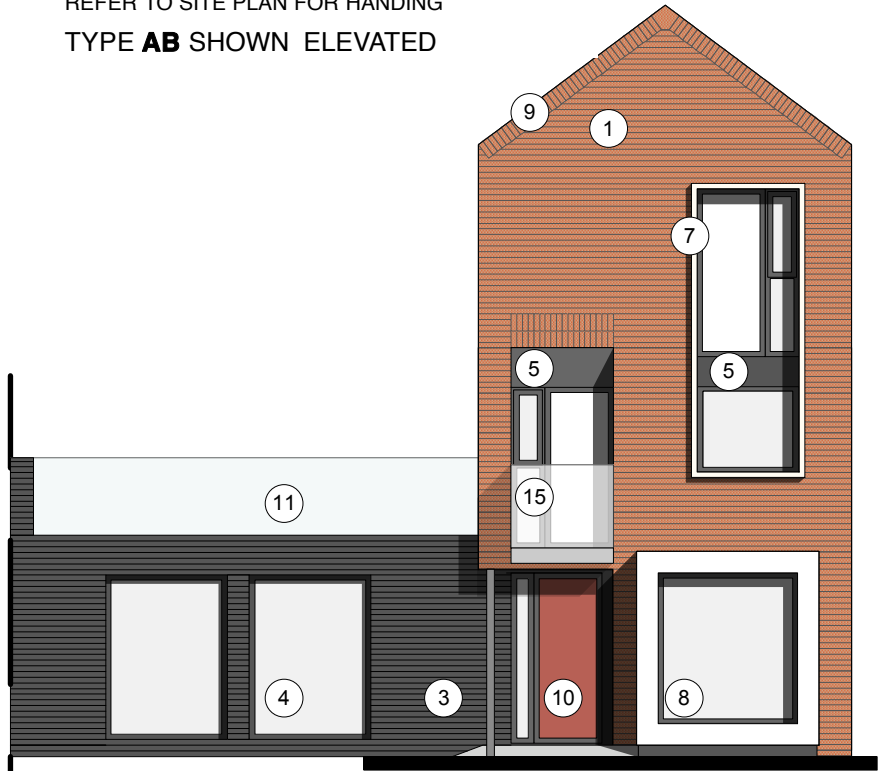
first floor plan



second floor plan



REFER TO SITE PLAN FOR HANDING
TYPE **AB** SHOWN ELEVATED



Elevation AA



Elevation BB

MATERIAL KEY

- [1] MAIN FACING MATERIAL : VARIES ACROSS SITE BETWEEN 2 COMPLIMENTARY FINISHES TO GENERATE CHARACTER VARIATIONS : REFER TO MATERIAL KEY DRAWING
- COMPRISING
- i] MARLBOROUGH STOCK RED / BROWN MULTI BY IBSTOCK or similar
ii] WHITE RENDER or similar
- ALL BRICKWORK UP TO DPC TO BE STAFF SLATE BLUE or similar
- [2] FEATURE SOLDIER BRICKWORK IN MAIN FACING BRICK
- [3] CONTRASTING FACING BRICKWORK TO BE STAFF SLATE BLUE BY IBSTOCK or similar
- [4] RAL 7016 [ANTHRACITE GREY] UPVC WINDOWS [WHITE INTERNAL].
- [5] RAL 7016 [ANTHRACITE GREY] FIBRE CEMENT BOARD BY ROCKCLAD OR SIMILAR
- [6] ROOF TILES TO BE GRAMPIAN SLATE GREY BY RUSSELL or similar
- [7] WHITE POWDER COATED ALUMINIUM SURROUND TO FORM PROJECTING WINDOW FRAME
- [8] WHITE RENDER BAY WITH RAL 7016 UPVC WINDOW SET IN
- [9] SOLDIER BRICKWORK IN FACING BRICK
- [10] FRONT DOORSET IN COLOUR PAINT FINISH TBC
- [11] BALUSTRADING TO ROOF TERRACE TO BE GLASS
- [12] PROJECTING BALCONY IN GLASS WITH RAL 7016 PAINTED STEEL SUPPORT.
- [13] REAR WINDOWS TO BE IN WHITE UPVC
- [14] STAINED SOFTWOOD TIMBER



Elevation CC



Sectional Elevation DD

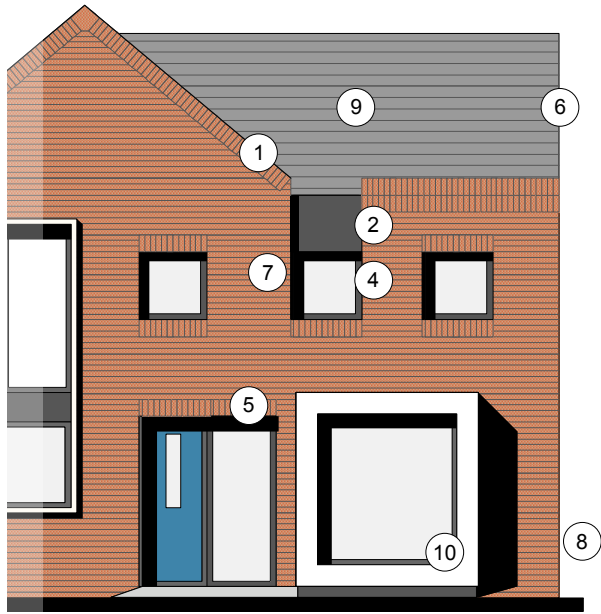
SITE PLAN COLOUR KEY



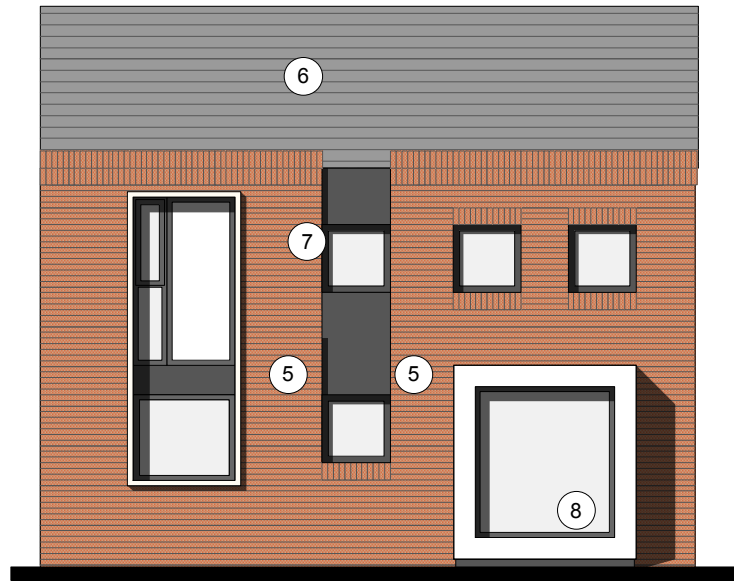
TERRACE ARRANGEMENT A
Scale 1:200



TERRACE ARRANGEMENT B
Scale 1:200



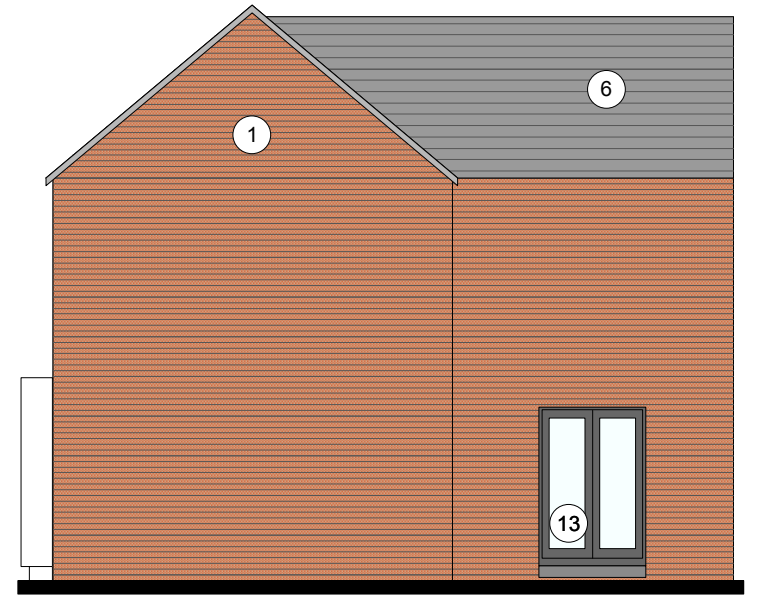
Front Elevation



Side Elevation A



Rear Elevation



Side Elevation B

MATERIAL KEY

[1] MAIN FACING MATERIAL : VARIES ACROSS SITE BETWEEN 2 COMPLIMENTARY FINISHES TO GENERATE CHARACTER VARIATIONS : REFER TO MATERIAL KEY DRAWING

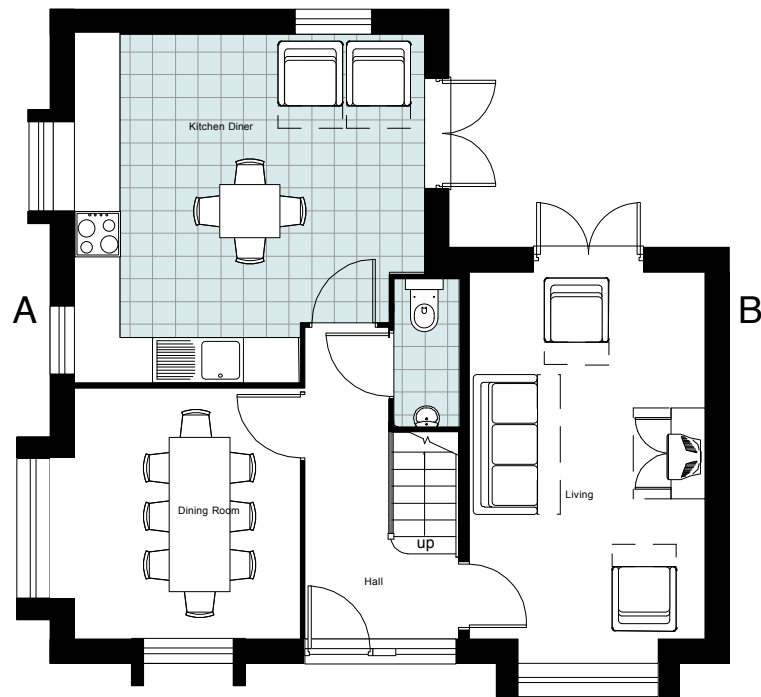
COMPRISING

- i] MARLBOROUGH STOCK RED / BROWN MULTI BY IBSTOCK or similar
- ii] WHITE RENDER or similar

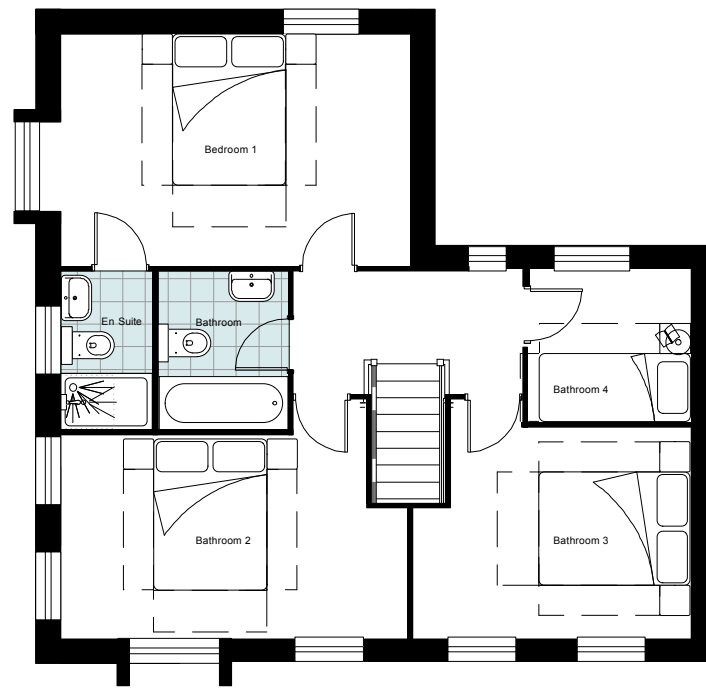
ALL BRICKWORK UP TO DPC TO BE STAFF SLATE BLUE or similar

- [2] FEATURE SOLDIER BRICKWORK IN MAIN FACING BRICK
- [3] CONTRASTING FACING BRICKWORK TO BE STAFF SLATE BLUE BY IBSTOCK or similar
- [4] RAL 7016 [ANTHRACITE GREY] UPVC WINDOWS [WHITE INTERNAL].
- [5] RAL 7016 [ANTHRACITE GREY] FIBRE CEMENT BOARD BY ROCKCLAD OR SIMILAR
- [6] ROOF TILES TO BE GRAMPIAN SLATE GREY BY RUSSELL or similar
- [7] WHITE POWDER COATED ALUMINIUM SURROUND TO FORM PROJECTING WINDOW FRAME
- [8] WHITE RENDER BAY WITH RAL 7016 UPVC WINDOW SET IN
- [9] SOLDIER BRICKWORK IN FACING BRICK
- [10] FRONT DOORSET IN COLOUR PAINT FINISH TBC
- [11] BALUSTRADING TO ROOF TERRACE TO BE GLASS
- [12] PROJECTING BALCONY IN GLASS WITH RAL 7016 PAINTED STEEL SUPPORT.
- [13] REAR WINDOWS TO BE IN WHITE UPVC
- [14] STAINED SOFTWOOD TIMBER
- [15] PROJECTING BALCONY IN GLASS WITH RAL 7016 PAINTED STEEL SUPPORT

REFER TO SITE PLAN FOR HANDING

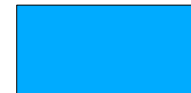


Ground Floor Plan



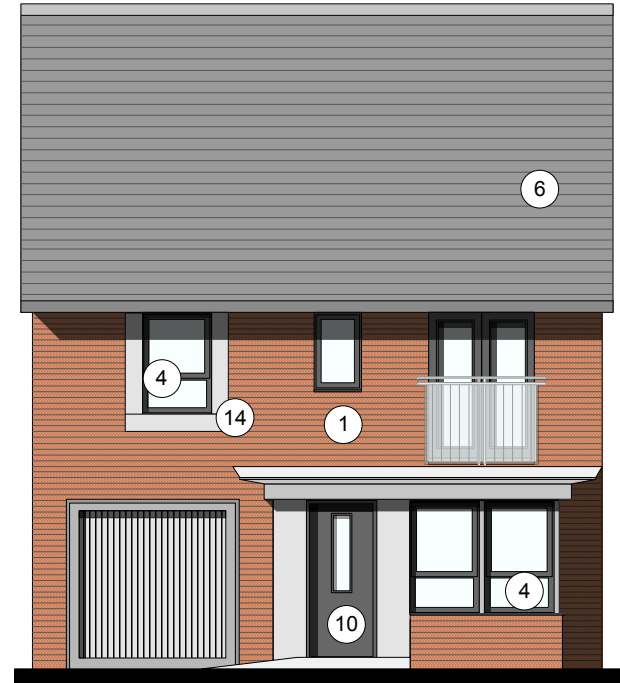
First Floor Plan

SITE PLAN COLOUR KEY

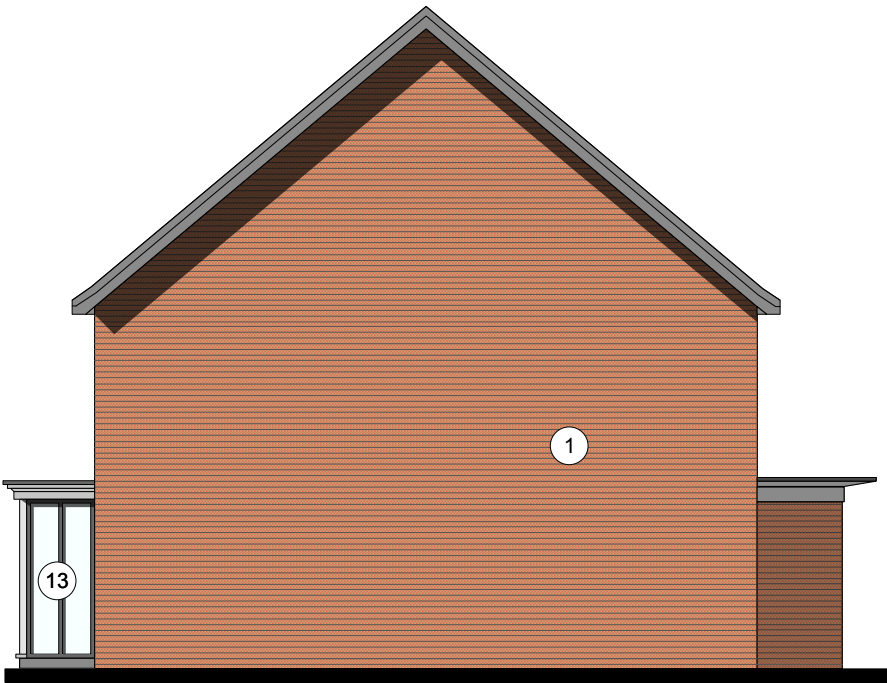


REFER TO SITE PLAN FOR HANDING

Front Elevation



Side Elevation A



Rear Elevation



Side Elevation B



MATERIAL KEY

[1] MAIN FACING MATERIAL : VARIES ACROSS SITE BETWEEN 2 COMPLIMENTARY FINISHES TO GENERATE CHARACTER VARIATIONS : REFER TO MATERIAL KEY DRAWING

COMPRISING

- i] MARLBOROUGH STOCK RED / BROWN MULTI BY IBSTOCK or similar
- ii] WHITE RENDER or similar

ALL BRICKWORK TO DPC TO BE STAFF SLATE BLUE or similar

[2] FEATURE SOLDIER BRICKWORK IN MAIN FACING BRICK

[3] CONTRASTING FACING BRICKWORK TO BE STAFF SLATE BLUE BY IBSTOCK or similar

[4] RAL 7016 [ANTHRACITE GREY] UPVC WINDOWS [WHITE INTERNAL].

[5] RAL 7016 [ANTHRACITE GREY] FIBRE CEMENT BOARD BY ROCKCLAD OR SIMILAR

[6] ROOF TILES TO BE GRAMPIAN SLATE GREY BY RUSSELL or similar

[7] WHITE POWDER COATED ALUMINIUM AND PROJECTING WINDOW FRAME

[8] WHITE RENDER BAY WITH RAL 7016 UPVC WINDOW SET IN

[9] SOLDIER COURSE AS FACING BRICK

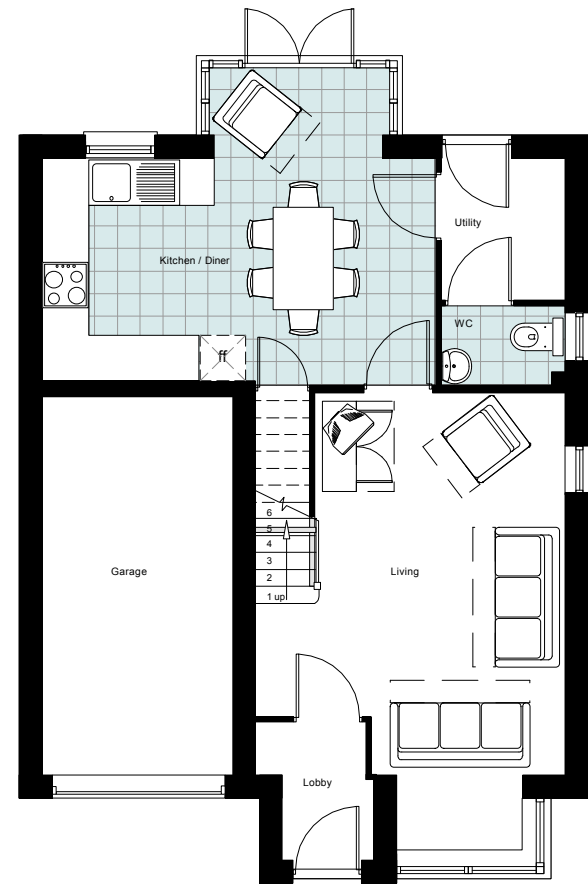
[10] FRONT DOORSET IN COLOUR PAINT FINISH TBC

[11] BALUSTRADING TO ROOF TERRACE TO BE GLASS

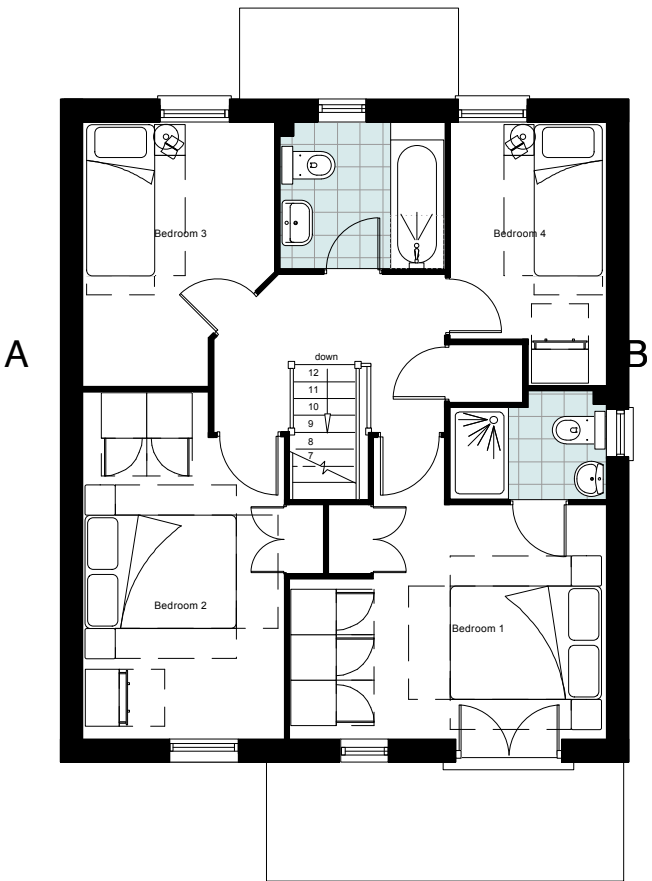
[12] PROJECTING BALCONY IN GLASS WITH RAL 7016 PAINTED STEEL SUPPORT.

[13] REAR WINDOWS AND DOORS TO BE IN WHITE UPVC

[14] ARTSTONE, COLOUR TBC



Ground Floor Plan



First Floor Plan



Alternative Render Elevation
Plot 108
Scale 1:200

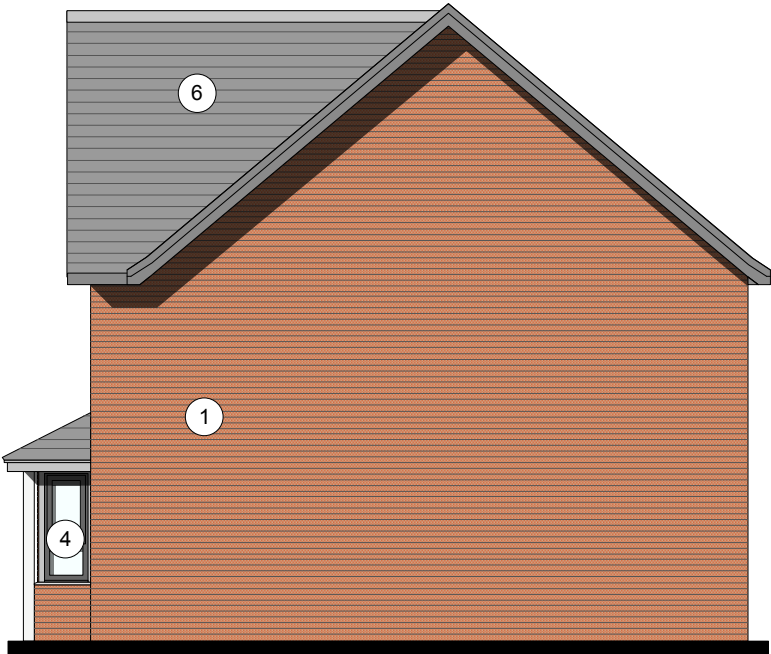
SITE PLAN COLOUR KEY



Front Elevation



Side Elevation A



Rear Elevation



Side Elevation B



MATERIAL KEY

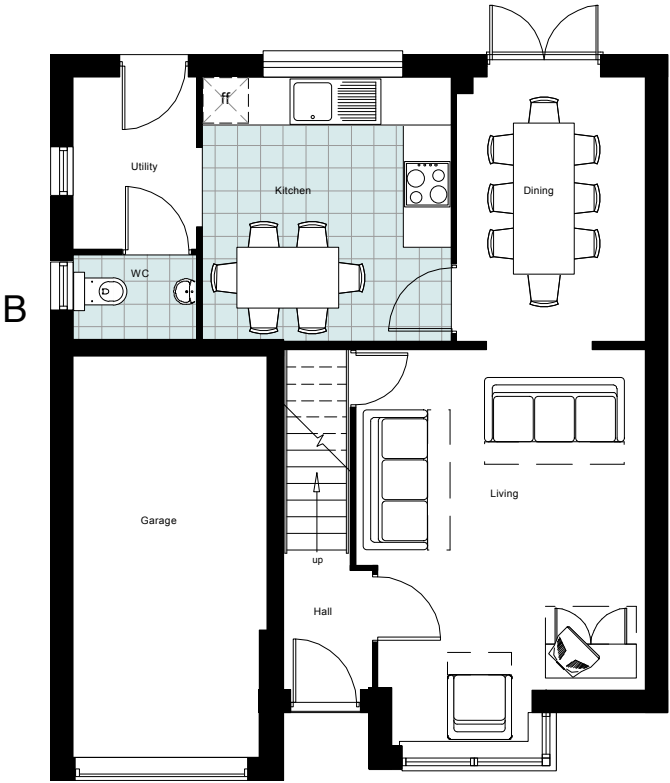
[1] MAIN FACING MATERIAL : VARIES ACROSS SITE BETWEEN 2 COMPLIMENTARY FINISHES TO GENERATE CHARACTER VARIATIONS : REFER TO MATERIAL KEY DRAWING

COMPRISING

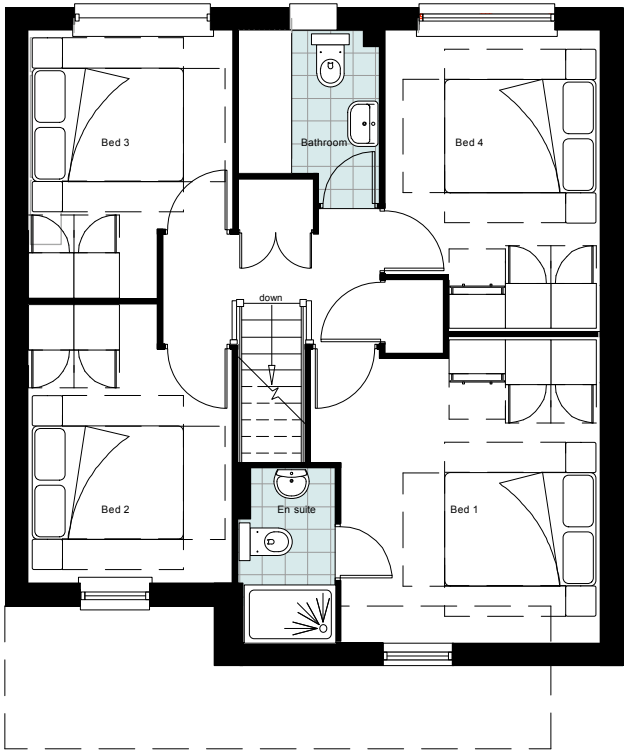
- i] MARLBOROUGH STOCK RED / BROWN MULTI BY IBSTOCK or similar
- ii] WHITE RENDER or similar

ALL BRICKWORK TO DPC TO BE STAFF SLATE BLUE or similar

- [2] FEATURE SOLDIER BRICKWORK IN MAIN FACING BRICK
- [3] CONTRASTING FACING BRICKWORK TO BE STAFF SLATE BLUE BY IBSTOCK or similar
- [4] RAL 7016 [ANTHRACITE GREY] UPVC WINDOWS [WHITE INTERNAL].
- [5] RAL 7016 [ANTHRACITE GREY] FIBRE CEMENT BOARD BY ROCKCLAD OR SIMILAR
- [6] ROOF TILES TO BE GRAMPIAN SLATE GREY BY RUSSELL or similar
- [7] WHITE POWDER COATED ALUMINIUM AND PROJECTING WINDOW FRAME
- [8] WHITE RENDER BAY WITH RAL 7016 UPVC WINDOW SET IN
- [9] SOLDIER COURSE AS FACING BRICK
- [10] FRONT DOORSET IN COLOUR PAINT FINISH TBC
- [11] BALUSTRADING TO ROOF TERRACE TO BE GLASS
- [12] PROJECTING BALCONY IN GLASS WITH RAL 7016 PAINTED STEEL SUPPORT.
- [13] REAR WINDOWS AND DOORS TO BE IN WHITE UPVC
- [14] ARTSTONE, COLOUR TBC



Ground Floor Plan



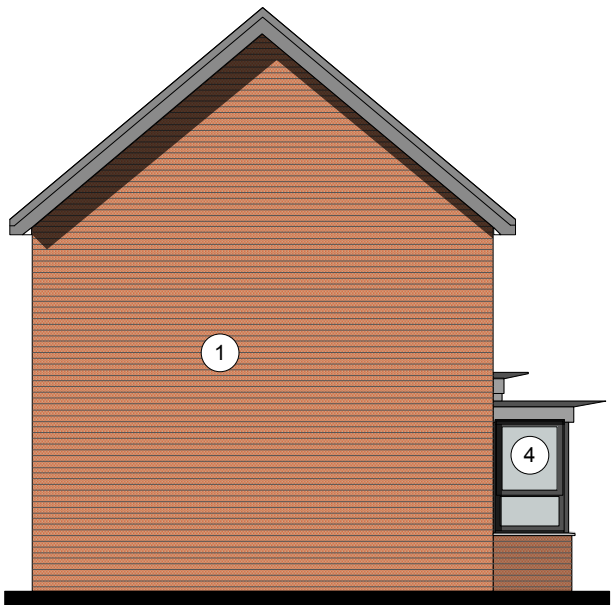
First Floor Plan

SITE PLAN COLOUR KEY





Front Elevation



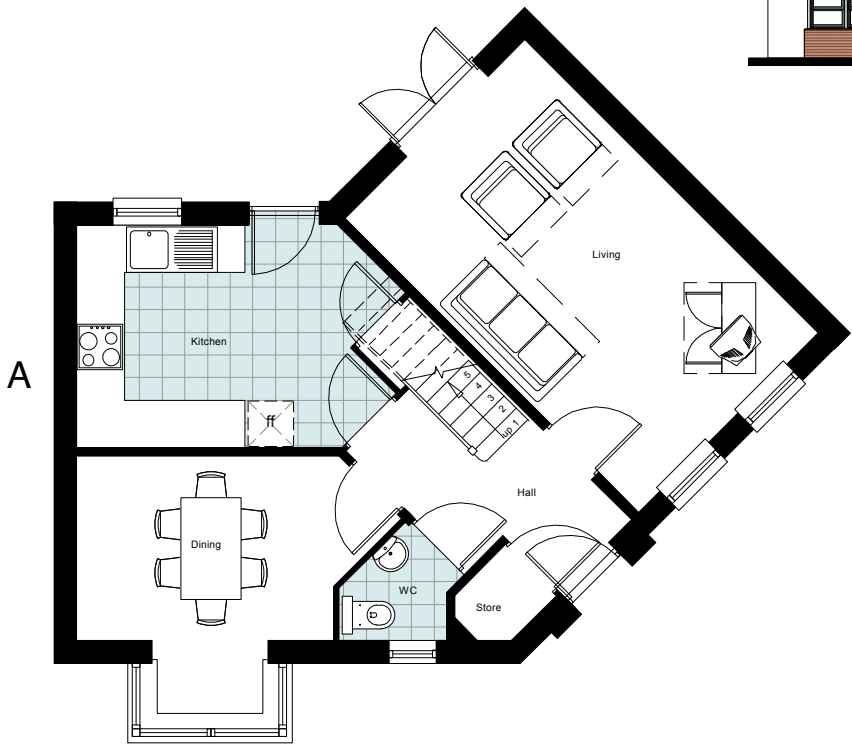
Side Elevation A



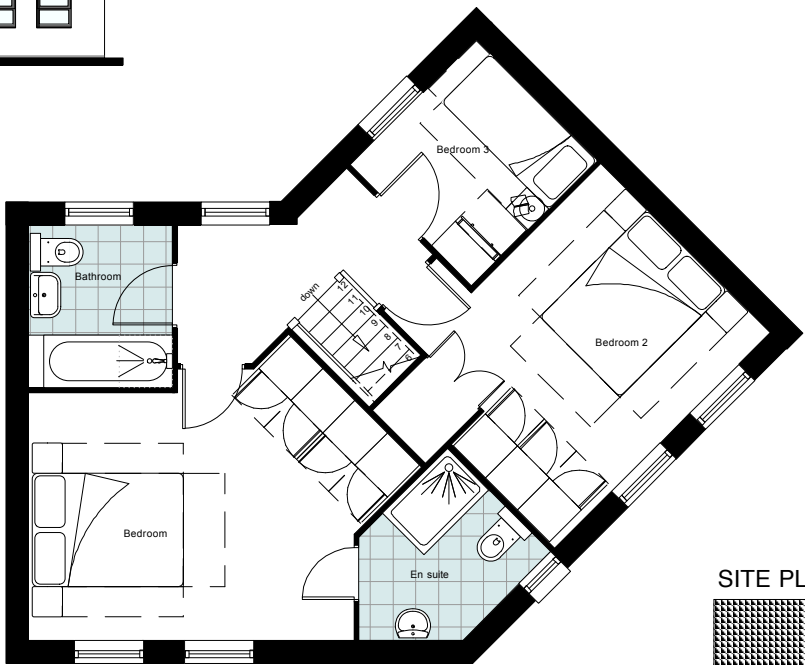
Rear Elevation



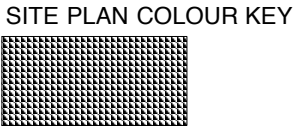
ALTERNATIVE ELEVATION
RENDER
PLOT 185,186
Scale 1:200



Ground Floor Plan



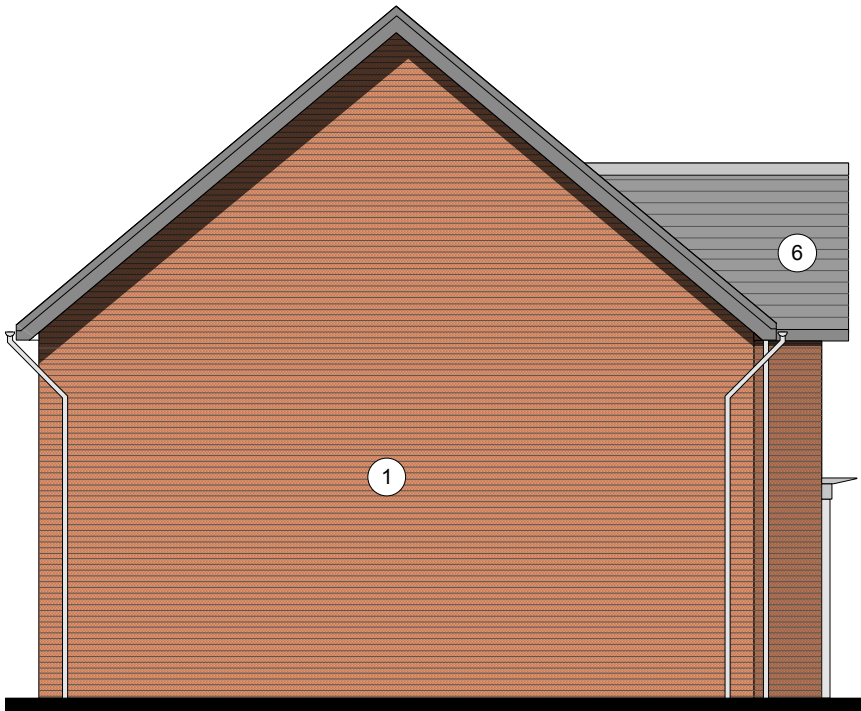
First Floor Plan



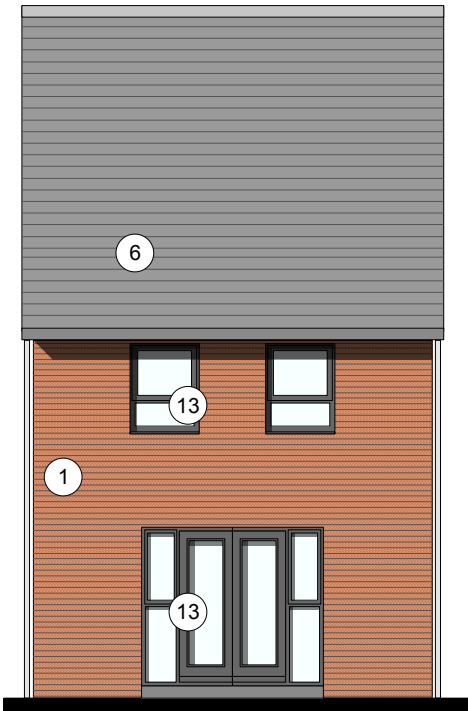
- MATERIAL KEY**
- [1] MAIN FACING MATERIAL : VARIES ACROSS SITE BETWEEN 2 COMPLIMENTARY FINISHES TO GENERATE CHARACTER VARIATIONS : REFER TO MATERIAL KEY DRAWING
- COMPRISING
- i] MARLBOROUGH STOCK RED / BROWN MULTI BY IBSTOCK or similar
- ii] WHITE RENDER or similar
- ALL BRICKWORK TO DPC TO BE STAFF SLATE BLUE or similar
- [2] FEATURE SOLDIER BRICKWORK IN MAIN FACING BRICK
- [3] CONTRASTING FACING BRICKWORK TO BE STAFF SLATE BLUE BY IBSTOCK or similar
- [4] RAL 7016 [ANTHRACITE GREY] UPVC WINDOWS [WHITE INTERNAL].
- [5] RAL 7016 [ANTHRACITE GREY] FIBRE CEMENT BOARD BY ROCKCLAD OR SIMILAR
- [6] ROOF TILES TO BE GRAMPIAN SLATE GREY BY RUSSELL or similar
- [7] WHITE POWDER COATED ALUMINIUM AND PROJECTING WINDOW FRAME
- [8] WHITE RENDER BAY WITH RAL 7016 UPVC WINDOW SET IN
- [9] SOLDIER COURSE AS FACING BRICK
- [10] FRONT DOORSET IN COLOUR PAINT FINISH TBC
- [11] BALUSTRADING TO ROOF TERRACE TO BE GLASS
- [12] PROJECTING BALCONY IN GLASS WITH RAL 7016 PAINTED STEEL SUPPORT.
- [13] REAR WINDOWS AND DOORS TO BE IN WHITE UPVC
- [14] ARTSTONE, COLOUR TBC



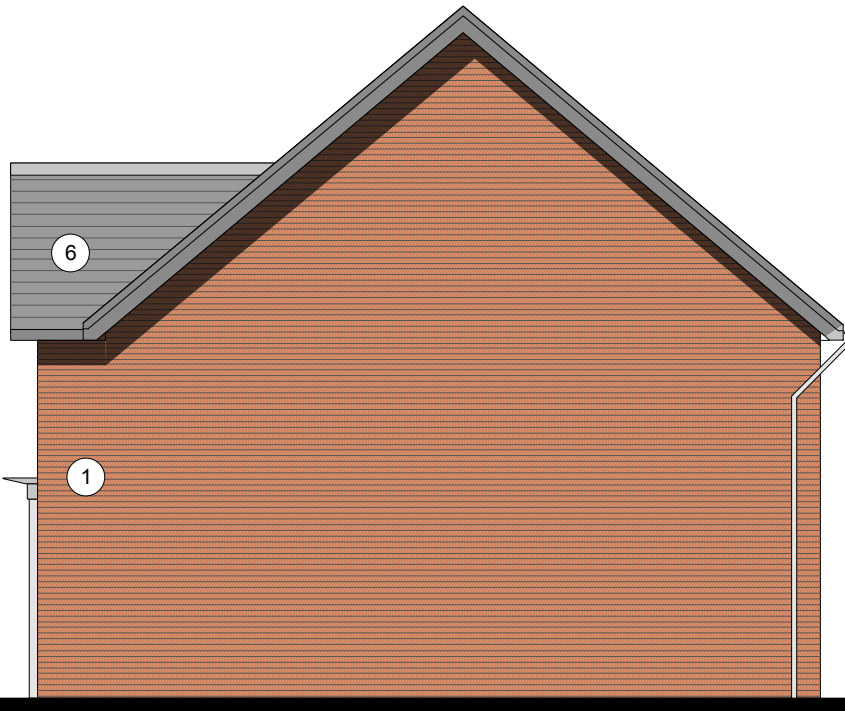
Front Elevation



Side Elevation A



Rear Elevation



Side Elevation B

MATERIAL KEY

[1] MAIN FACING MATERIAL : VARIES ACROSS SITE BETWEEN 2 COMPLIMENTARY FINISHES TO GENERATE CHARACTER VARIATIONS : REFER TO MATERIAL KEY DRAWING

COMPRISING

- i] MARLBOROUGH STOCK RED / BROWN MULTI BY IBSTOCK or similar
- ii] WHITE RENDER or similar

ALL BRICKWORK TO DPC TO BE STAFF SLATE BLUE or similar

[2] FEATURE SOLDIER BRICKWORK IN MAIN FACING BRICK

[3] CONTRASTING FACING BRICKWORK TO BE STAFF SLATE BLUE BY IBSTOCK or similar

[4] RAL 7016 [ANTHRACITE GREY] UPVC WINDOWS [WHITE INTERNAL].

[5] RAL 7016 [ANTHRACITE GREY] FIBRE CEMENT BOARD BY ROCKCLAD OR SIMILAR

[6] ROOF TILES TO BE GRAMPIAN SLATE GREY BY RUSSELL or similar

[7] WHITE POWDER COATED ALUMINIUM AND PROJECTING WINDOW FRAME

[8] WHITE RENDER BAY WITH RAL 7016 UPVC WINDOW SET IN

[9] SOLDIER COURSE AS FACING BRICK

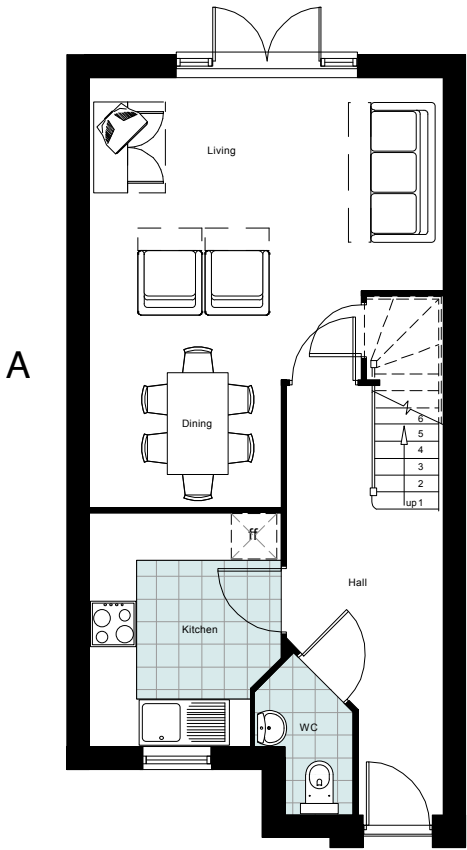
[10] FRONT DOORSET IN COLOUR PAINT FINISH TBC

[11] BALUSTRADING TO ROOF TERRACE TO BE GLASS

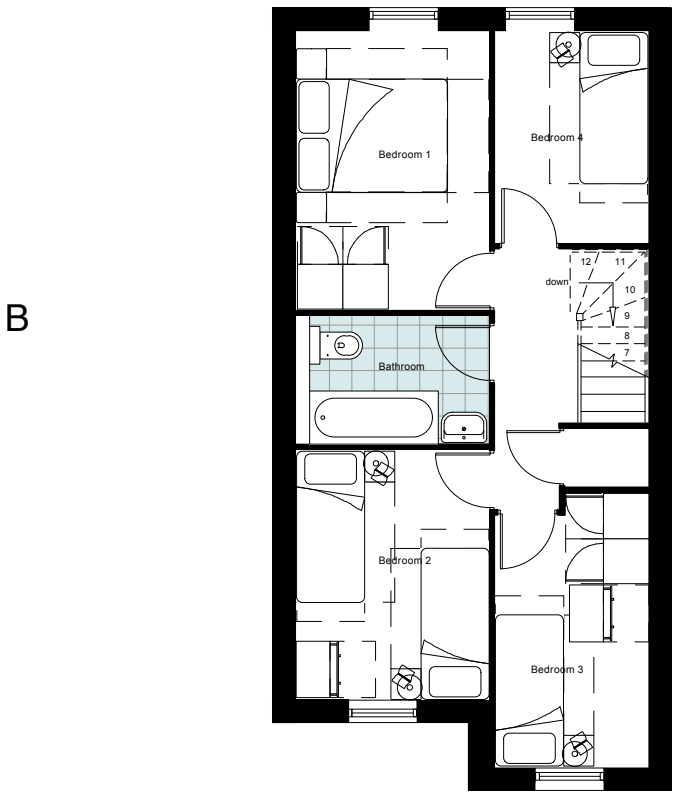
[12] PROJECTING BALCONY IN GLASS WITH RAL 7016 PAINTED STEEL SUPPORT.

[13] REAR WINDOWS AND DOORS TO BE IN WHITE UPVC

[14] ARTSTONE, COLOUR TBC

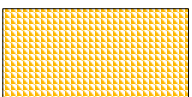


Ground Floor Plan



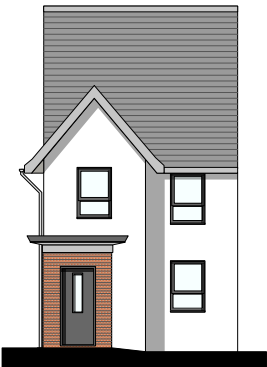
First Floor Plan

SITE PLAN COLOUR KEY



ALTERNATIVE ELEVATION
TRANSITION

PLOT 113,112,98,99
Scale 1:200

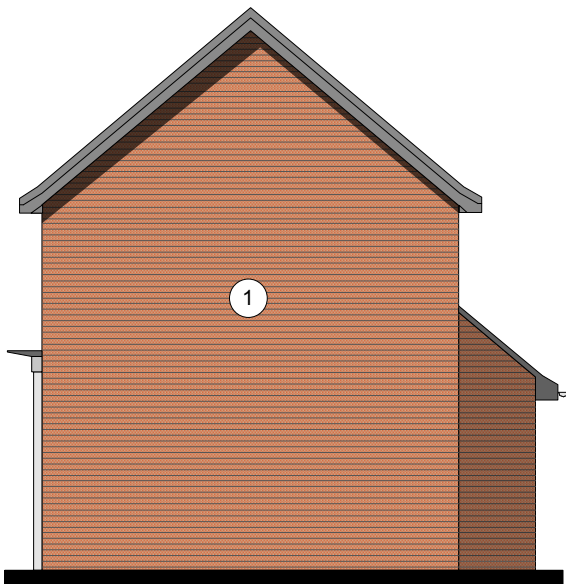


ALTERNATIVE ELEVATION
RENDER

PLOT 148-155, 187-192,
195-198
Scale 1:200



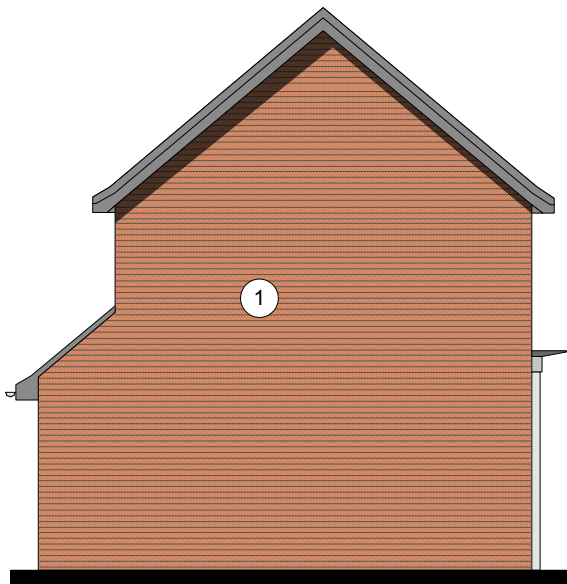
Front Elevation



Side Elevation A



Rear Elevation



Side Elevation B

MATERIAL KEY

[1] MAIN FACING MATERIAL : VARIES ACROSS SITE BETWEEN 2 COMPLIMENTARY FINISHES TO GENERATE CHARACTER VARIATIONS : REFER TO MATERIAL KEY DRAWING

COMPRISING

- i] MARLBOROUGH STOCK RED / BROWN MULTI BY IBSTOCK or similar
- ii] WHITE RENDER or similar

ALL BRICKWORK TO DPC TO BE STAFF SLATE BLUE or similar

[2] FEATURE SOLDIER BRICKWORK IN MAIN FACING BRICK

[3] CONTRASTING FACING BRICKWORK TO BE STAFF SLATE BLUE BY IBSTOCK or similar

[4] RAL 7016 [ANTHRACITE GREY] UPVC WINDOWS [WHITE INTERNAL].

[5] RAL 7016 [ANTHRACITE GREY] FIBRE CEMENT BOARD BY ROCKCLAD OR SIMILAR

[6] ROOF TILES TO BE GRAMPIAN SLATE GREY BY RUSSELL or similar

[7] WHITE POWDER COATED ALUMINIUM AND PROJECTING WINDOW FRAME

[8] WHITE RENDER BAY WITH RAL 7016 UPVC WINDOW SET IN

[9] SOLDIER COURSE AS FACING BRICK

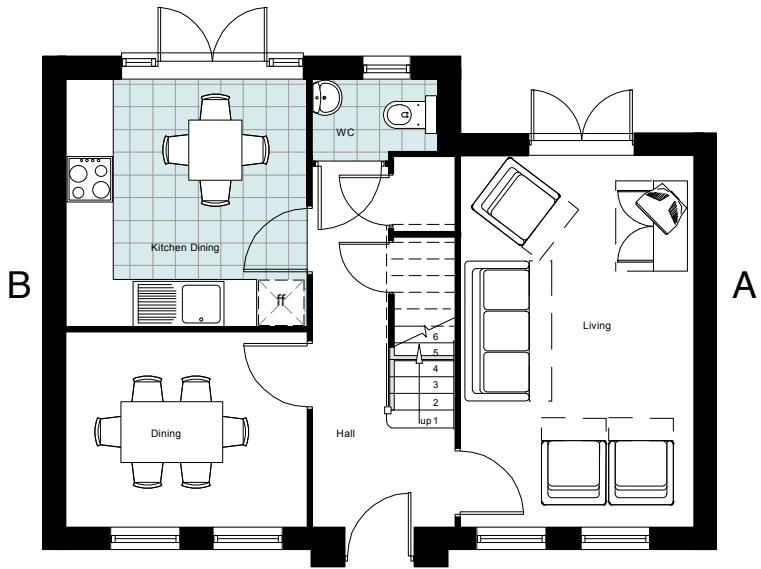
[10] FRONT DOORSET IN COLOUR PAINT FINISH TBC

[11] BALUSTRADING TO ROOF TERRACE TO BE GLASS

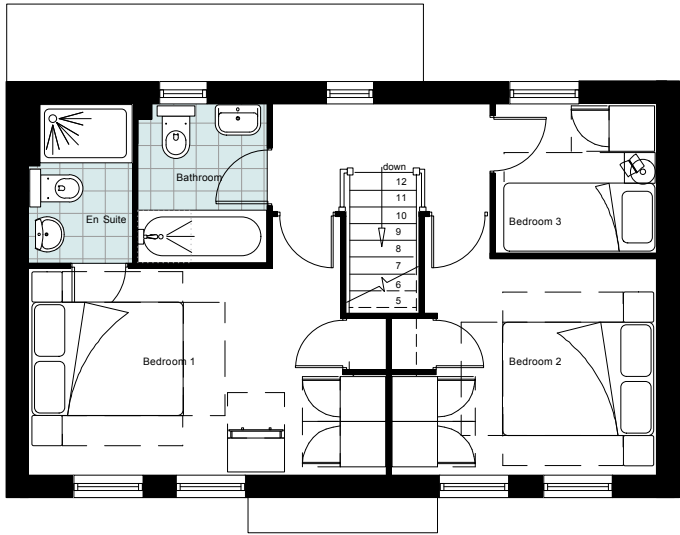
[12] PROJECTING BALCONY IN GLASS WITH RAL 7016 PAINTED STEEL SUPPORT.

[13] REAR WINDOWS AND DOORS TO BE IN WHITE UPVC

[14] ARTSTONE, COLOUR TBC

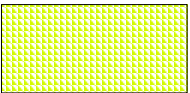


Ground Floor Plan



First Floor Plan

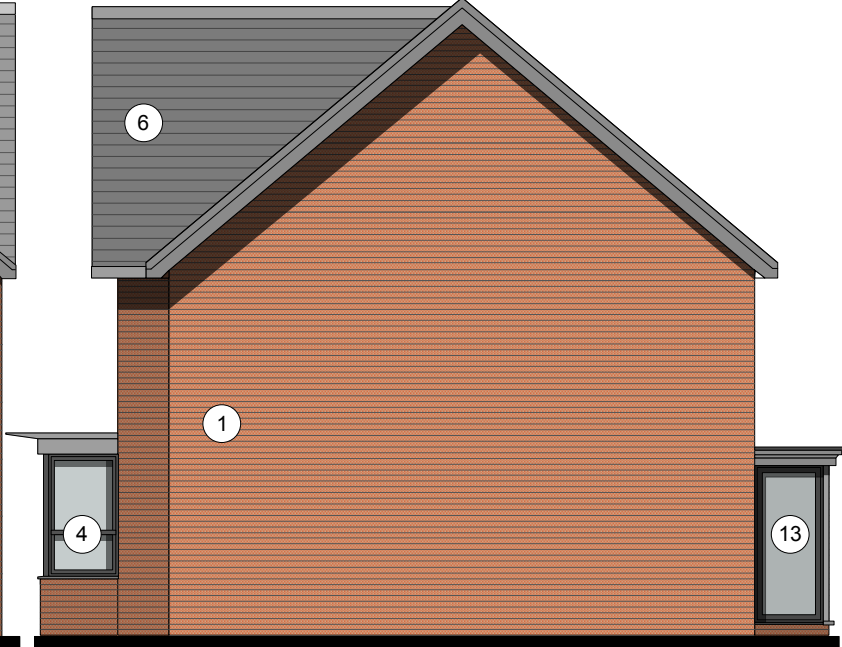
SITE PLAN COLOUR KEY



Front Elevation



Side Elevation A



Rear Elevation



Side Elevation B



MATERIAL KEY

[1] MAIN FACING MATERIAL : VARIES ACROSS SITE BETWEEN 2 COMPLIMENTARY FINISHES TO GENERATE CHARACTER VARIATIONS : REFER TO MATERIAL KEY DRAWING

COMPRISING

- i] MARLBOROUGH STOCK RED / BROWN MULTI BY IBSTOCK or similar
- ii] WHITE RENDER or similar

ALL BRICKWORK TO DPC TO BE STAFF SLATE BLUE or similar

[2] FEATURE SOLDIER BRICKWORK IN MAIN FACING BRICK

[3] CONTRASTING FACING BRICKWORK TO BE STAFF SLATE BLUE BY IBSTOCK or similar

[4] RAL 7016 [ANTHRACITE GREY] UPVC WINDOWS [WHITE INTERNAL].

[5] RAL 7016 [ANTHRACITE GREY] FIBRE CEMENT BOARD BY ROCKCLAD OR SIMILAR

[6] ROOF TILES TO BE GRAMPIAN SLATE GREY BY RUSSELL or similar

[7] WHITE POWDER COATED ALUMINIUM AND PROJECTING WINDOW FRAME

[8] WHITE RENDER BAY WITH RAL 7016 UPVC WINDOW SET IN

[9] SOLDIER COURSE AS FACING BRICK

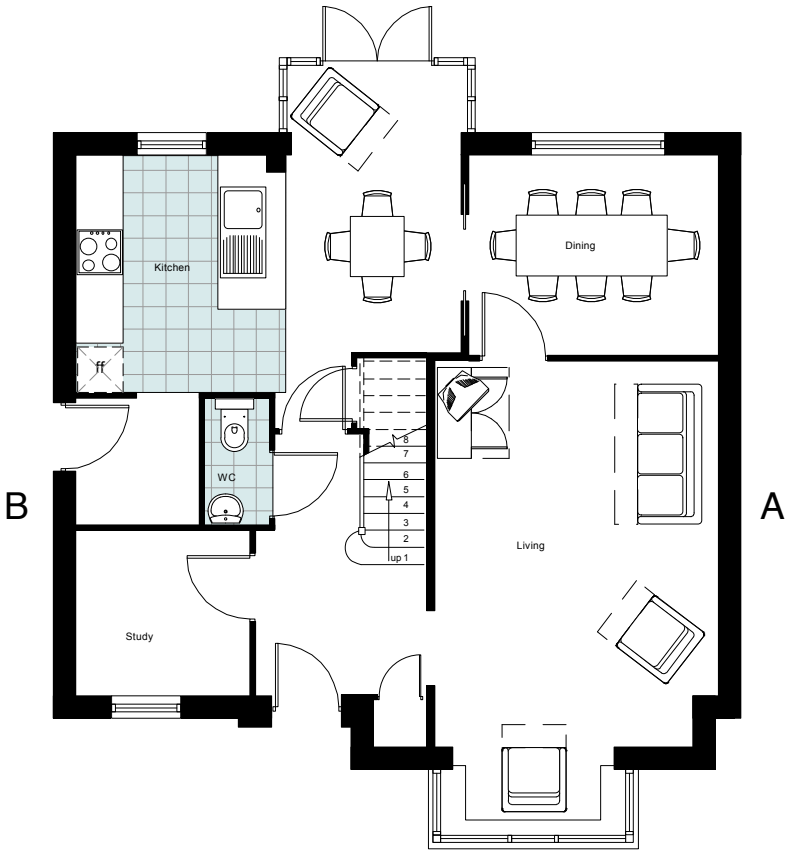
[10] FRONT DOORSET IN COLOUR PAINT FINISH TBC

[11] BALUSTRADING TO ROOF TERRACE TO BE GLASS

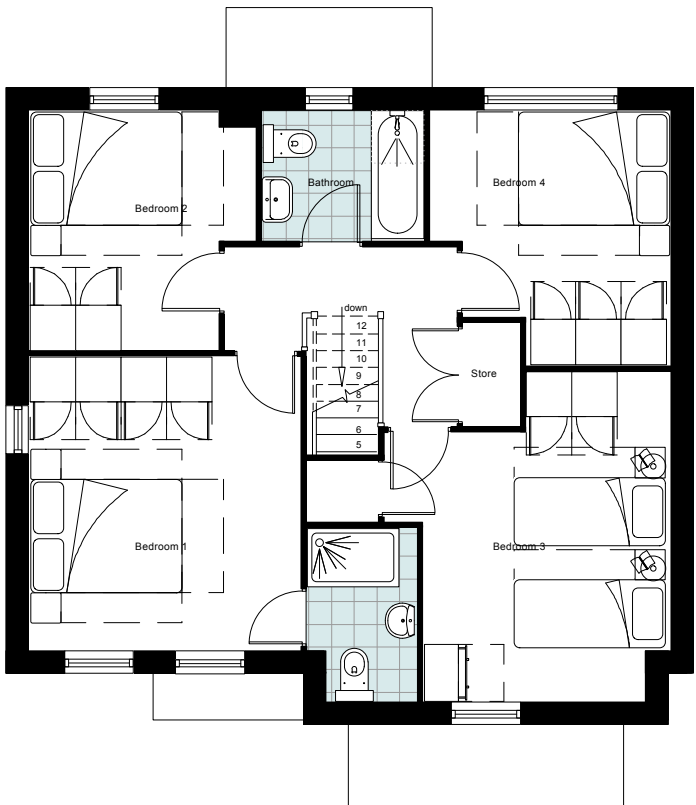
[12] PROJECTING BALCONY IN GLASS WITH RAL 7016 PAINTED STEEL SUPPORT.

[13] REAR WINDOWS AND DOORS TO BE IN WHITE UPVC

[14] ARTSTONE, COLOUR TBC



Ground Floor Plan

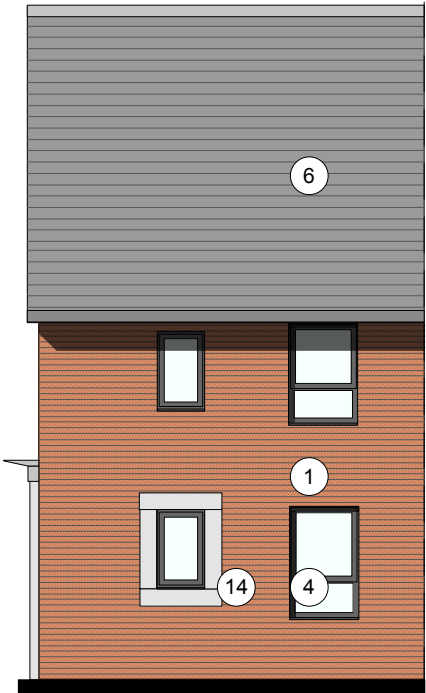


First Floor Plan

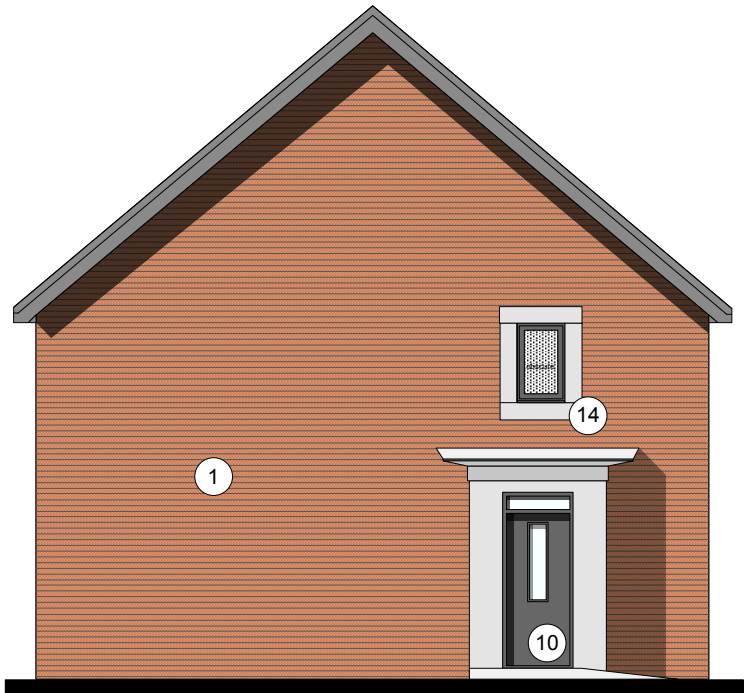
SITE PLAN COLOUR KEY



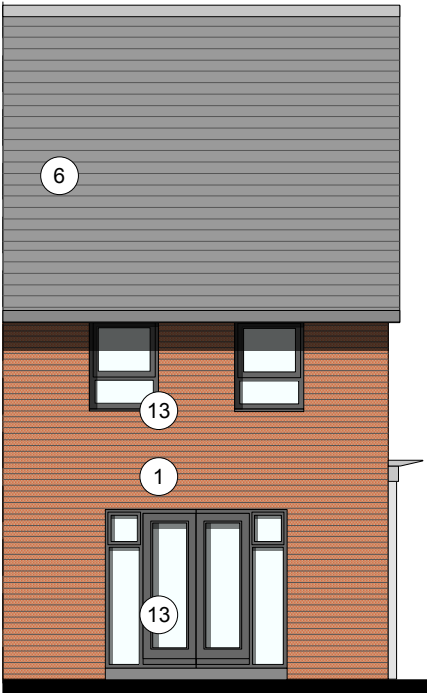
Front Elevation



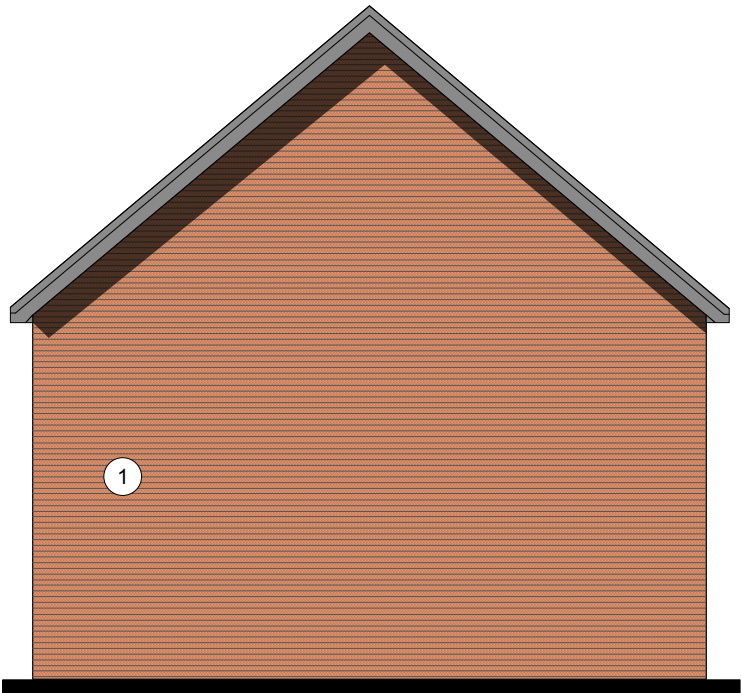
Side Elevation



Rear Elevation

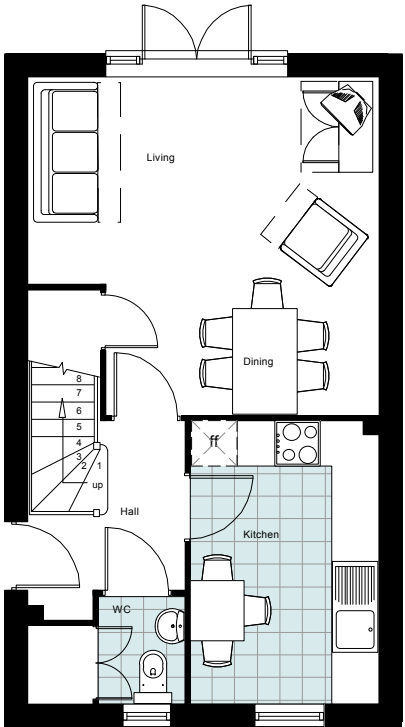


Rear Elevation



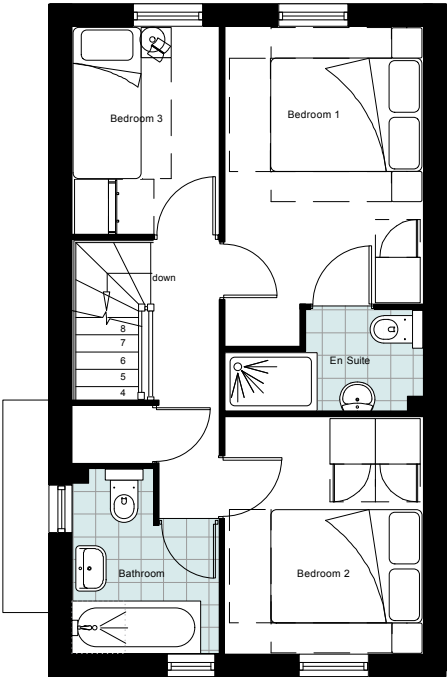
MATERIAL KEY

- [1] MAIN FACING MATERIAL : VARIES ACROSS SITE BETWEEN 2 COMPLIMENTARY FINISHES TO GENERATE CHARACTER VARIATIONS : REFER TO MATERIAL KEY DRAWING
- COMPRISING
- i] MARLBOROUGH STOCK RED / BROWN MULTI BY IBSTOCK or similar
- ii] WHITE RENDER or similar
- ALL BRICKWORK TO DPC TO BE STAFF SLATE BLUE or similar
- [2] FEATURE SOLDIER BRICKWORK IN MAIN FACING BRICK
- [3] CONTRASTING FACING BRICKWORK TO BE STAFF SLATE BLUE BY IBSTOCK or similar
- [4] RAL 7016 [ANTHRACITE GREY] UPVC WINDOWS [WHITE INTERNAL].
- [5] RAL 7016 [ANTHRACITE GREY] FIBRE CEMENT BOARD BY ROCKCLAD OR SIMILAR
- [6] ROOF TILES TO BE GRAMPIAN SLATE GREY BY RUSSELL or similar
- [7] WHITE POWDER COATED ALUMINIUM AND PROJECTING WINDOW FRAME
- [8] WHITE RENDER BAY WITH RAL 7016 UPVC WINDOW SET IN
- [9] SOLDIER COURSE AS FACING BRICK
- [10] FRONT DOORSET IN COLOUR PAINT FINISH TBC
- [11] BALUSTRADING TO ROOF TERRACE TO BE GLASS
- [12] PROJECTING BALCONY IN GLASS WITH RAL 7016 PAINTED STEEL SUPPORT.
- [13] REAR WINDOWS AND DOORS TO BE IN WHITE UPVC
- [14] ARTSTONE, COLOUR TBC

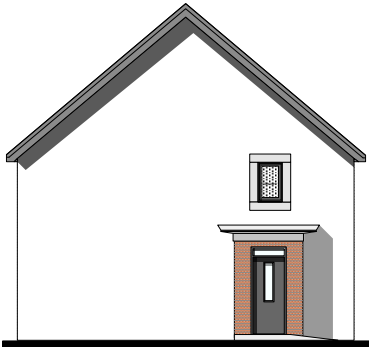


Ground Floor Plan

SITE PLAN COLOUR KEY



First Floor Plan



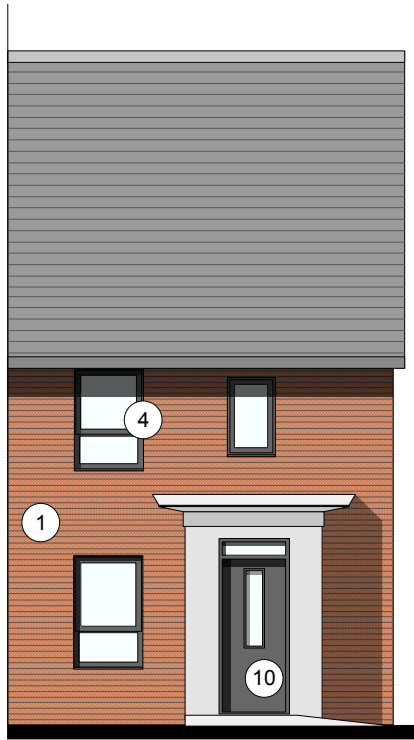
ALTERNATIVE ELEVATION

RENDER

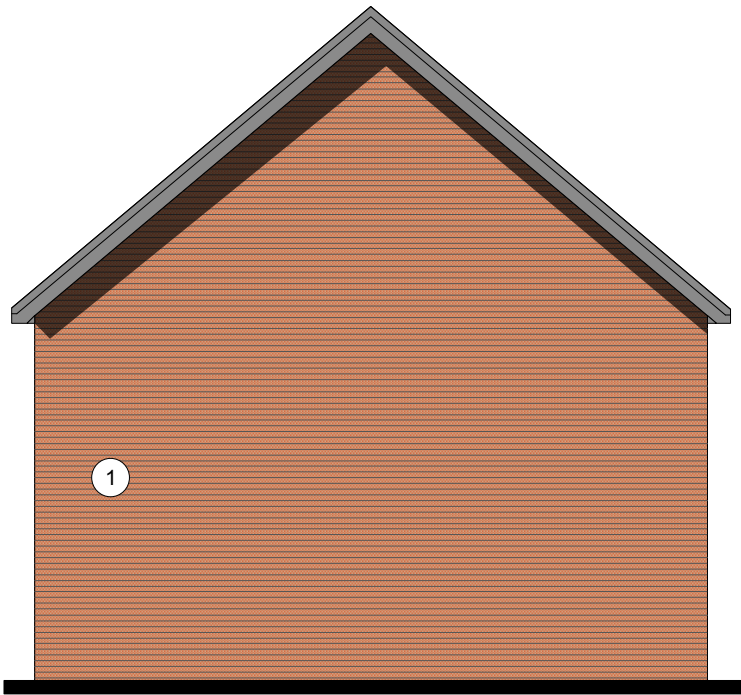
PLOT 179,180,206,205

Scale 1:200

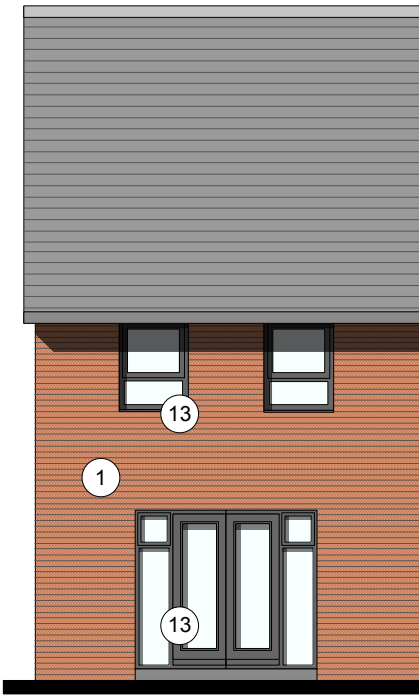
Side Elevation A



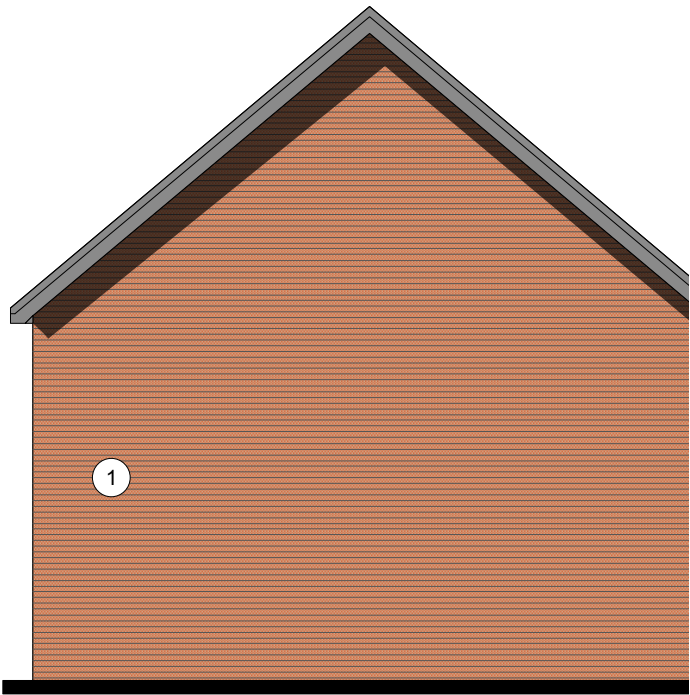
Rear Elevation



Front Elevation



Side Elevation B



MATERIAL KEY

- [1] MAIN FACING MATERIAL : VARIES ACROSS SITE BETWEEN 2 COMPLIMENTARY FINISHES TO GENERATE CHARACTER VARIATIONS : REFER TO MATERIAL KEY DRAWING
- COMPRISING
- i] MARLBOROUGH STOCK RED / BROWN MULTI BY IBSTOCK or similar
 - ii] WHITE RENDER or similar
- ALL BRICKWORK TO DPC TO BE STAFF SLATE BLUE or similar
- [2] FEATURE SOLDIER BRICKWORK IN MAIN FACING BRICK
- [3] CONTRASTING FACING BRICKWORK TO BE STAFF SLATE BLUE BY IBSTOCK or similar
- [4] RAL 7016 [ANTHRACITE GREY] UPVC WINDOWS [WHITE INTERNAL].
- [5] RAL 7016 [ANTHRACITE GREY] FIBRE CEMENT BOARD BY ROCKCLAD OR SIMILAR
- [6] ROOF TILES TO BE GRAMPIAN SLATE GREY BY RUSSELL or similar
- [7] WHITE POWDER COATED ALUMINIUM AND PROJECTING WINDOW FRAME
- [8] WHITE RENDER BAY WITH RAL 7016 UPVC WINDOW SET IN
- [9] SOLDIER COURSE AS FACING BRICK
- [10] FRONT DOORSET IN COLOUR PAINT FINISH TBC
- [11] BALUSTRADING TO ROOF TERRACE TO BE GLASS
- [12] PROJECTING BALCONY IN GLASS WITH RAL 7016 PAINTED STEEL SUPPORT.
- [13] REAR WINDOWS AND DOORS TO BE IN WHITE UPVC
- [14] ARTSTONE, COLOUR TBC

ALTERNATIVE ELEVATION

TRANSITION

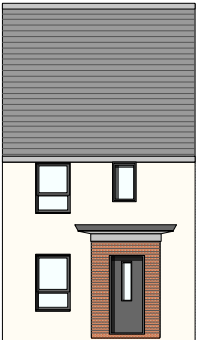
PLOT 146
Scale 1:200



ALTERNATIVE ELEVATION

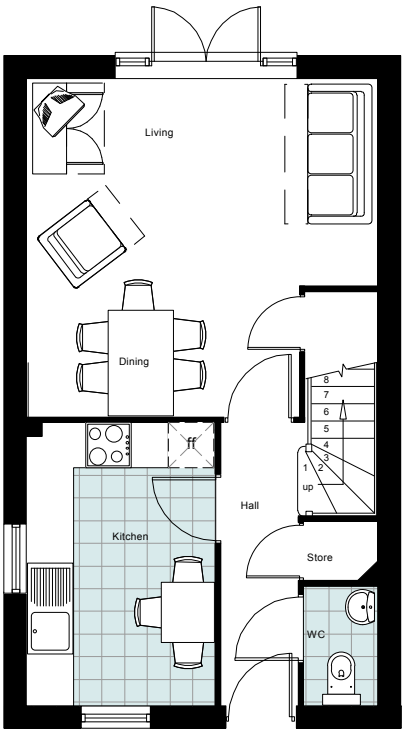
RENDER

PLOT 100-107, 199, 200
Scale 1:200



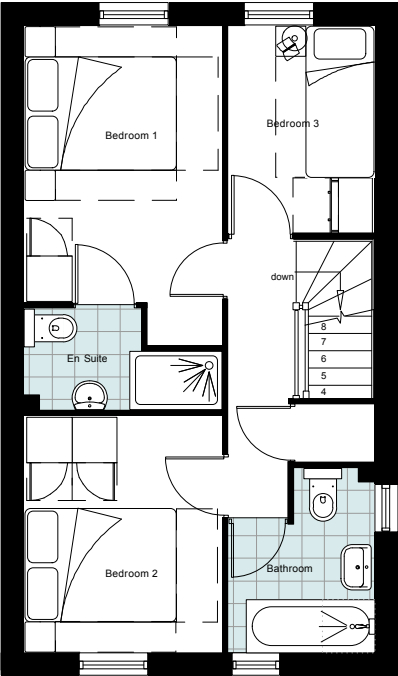
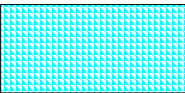
B

A



Ground Floor Plan

SITE PLAN COLOUR KEY

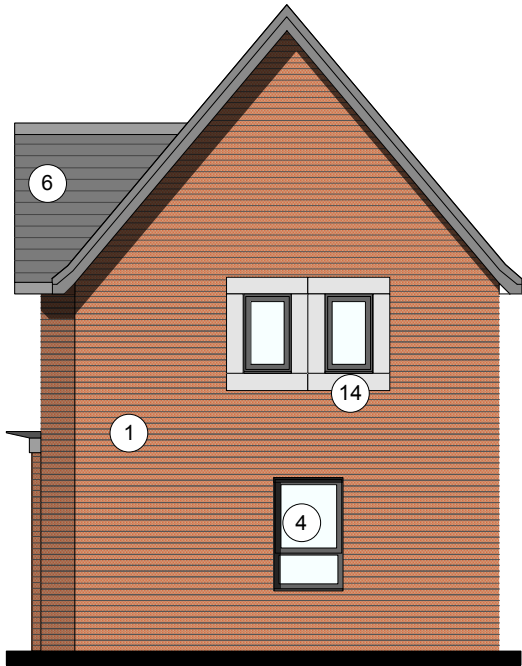


First Floor Plan

Side Elevation A



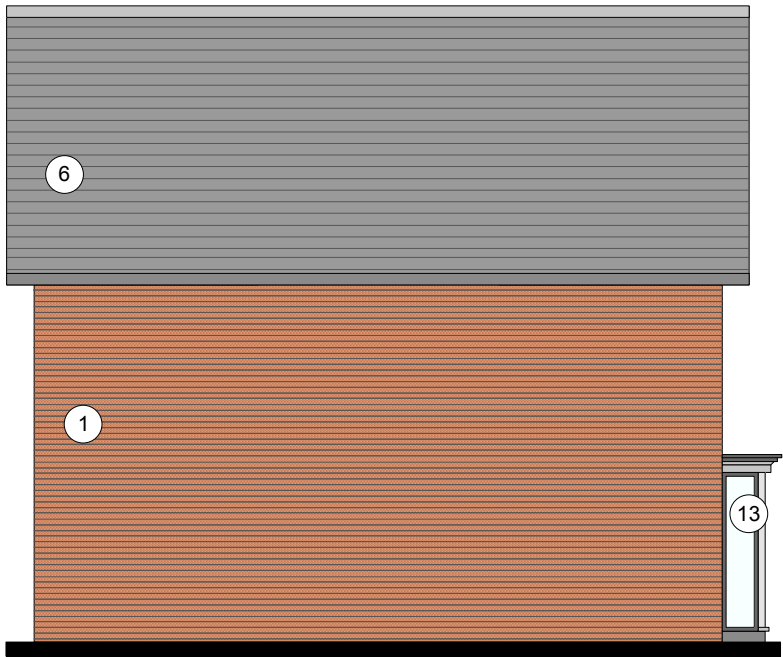
Rear Elevation



Front Elevation



Side Elevation B



MATERIAL KEY

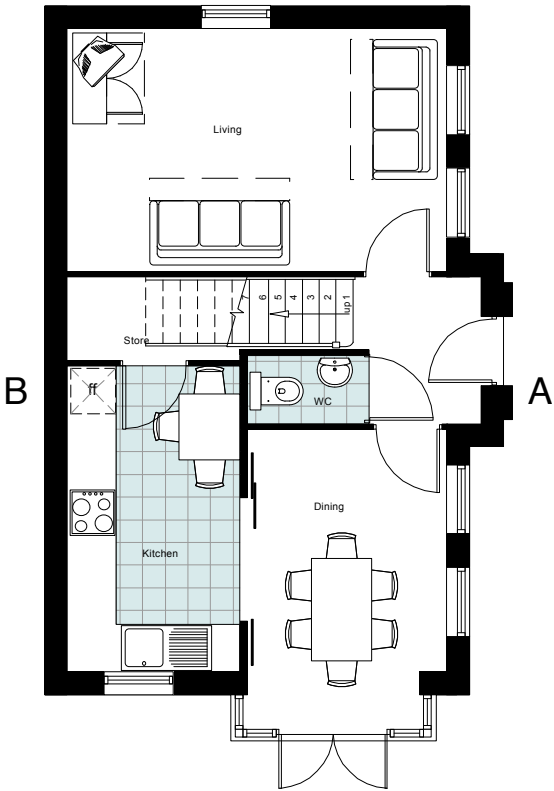
[1] MAIN FACING MATERIAL : VARIES ACROSS SITE BETWEEN 2 COMPLIMENTARY FINISHES TO GENERATE CHARACTER VARIATIONS : REFER TO MATERIAL KEY DRAWING

COMPRISING

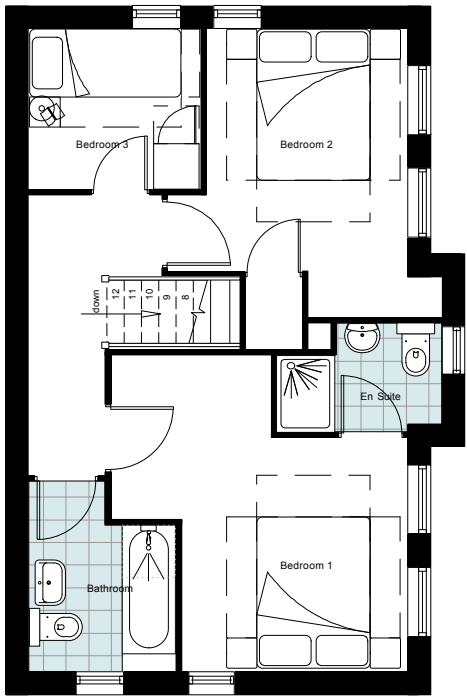
- i] MARLBOROUGH STOCK RED / BROWN MULTI BY IBSTOCK or similar
- ii] WHITE RENDER or similar

ALL BRICKWORK TO DPC TO BE STAFF SLATE BLUE or similar

- [2] FEATURE SOLDIER BRICKWORK IN MAIN FACING BRICK
- [3] CONTRASTING FACING BRICKWORK TO BE STAFF SLATE BLUE BY IBSTOCK or similar
- [4] RAL 7016 [ANTHRACITE GREY] UPVC WINDOWS [WHITE INTERNAL].
- [5] RAL 7016 [ANTHRACITE GREY] FIBRE CEMENT BOARD BY ROCKCLAD OR SIMILAR
- [6] ROOF TILES TO BE GRAMPIAN SLATE GREY BY RUSSELL or similar
- [7] WHITE POWDER COATED ALUMINIUM AND PROJECTING WINDOW FRAME
- [8] WHITE RENDER BAY WITH RAL 7016 UPVC WINDOW SET IN
- [9] SOLDIER COURSE AS FACING BRICK
- [10] FRONT DOORSET IN COLOUR PAINT FINISH TBC
- [11] BALUSTRADING TO ROOF TERRACE TO BE GLASS
- [12] PROJECTING BALCONY IN GLASS WITH RAL 7016 PAINTED STEEL SUPPORT.
- [13] REAR WINDOWS AND DOORS TO BE IN WHITE UPVC
- [14] ARTSTONE, COLOUR TBC



Ground Floor Plan



First Floor Plan



ALTERNATIVE TRANSITION ELEVATION

PLOT 147
Scale 1:200

SITE PLAN COLOUR KEY





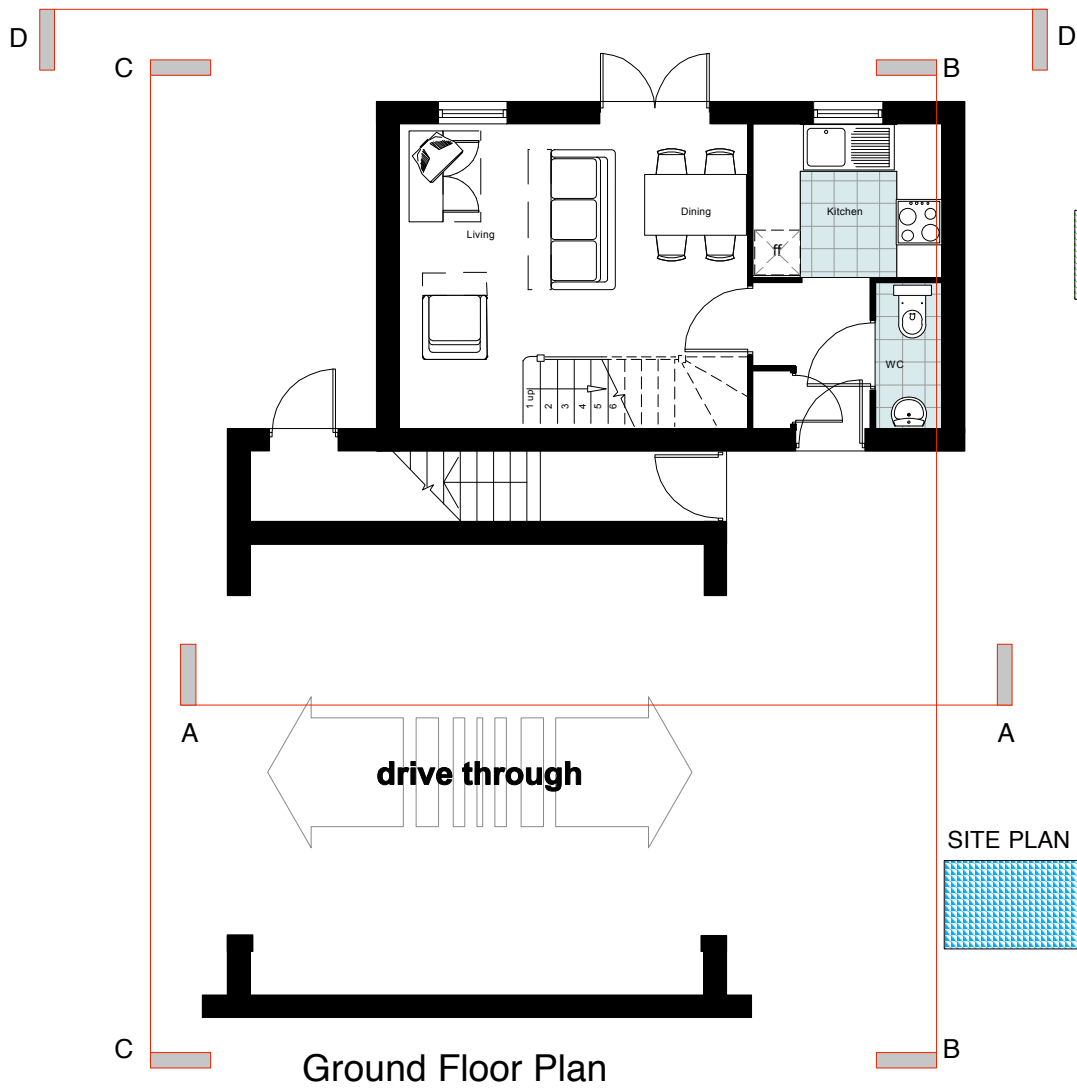
House Type 17 House Type 18
Sectional Elevation AA



House Type 17 House Type 18
Sectional Elevation BB



House Type 18 House Type 17
Rear Elevation CC



Ground Floor Plan

SITE PLAN COLOUR KEY



First Floor Plan

SITE PLAN COLOUR KEY



Elevation DD



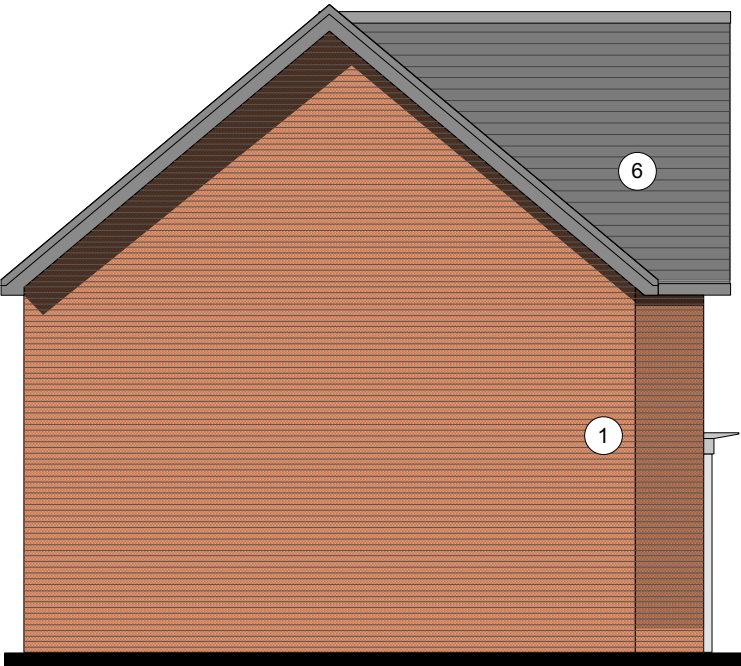
ALTERNATIVE RENDER
ELEVATION

PLOT 193,194
Scale 1:200

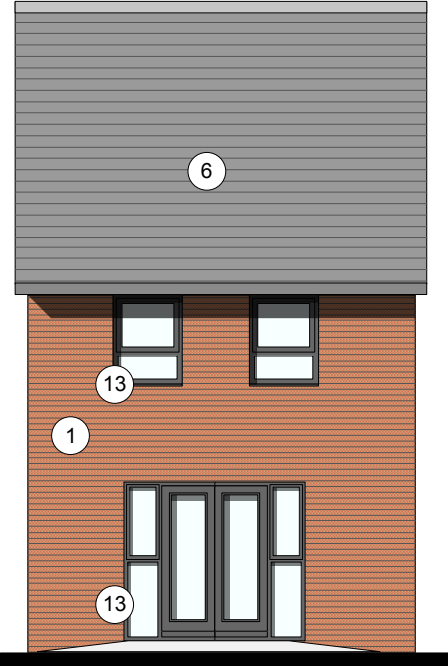
Front Elevation



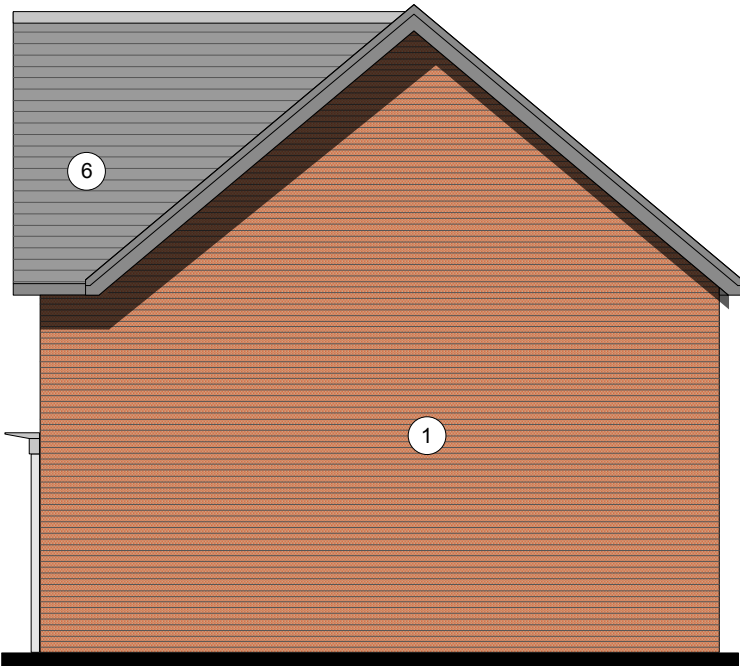
Side Elevation A



Rear Elevation



Side Elevation B



MATERIAL KEY

- [1] MAIN FACING MATERIAL : VARIES ACROSS SITE BETWEEN 2 COMPLIMENTARY FINISHES TO GENERATE CHARACTER VARIATIONS : REFER TO MATERIAL KEY DRAWING

COMPRISING

- i] MARLBOROUGH STOCK RED / BROWN MULTI BY IBSTOCK or similar
ii] WHITE RENDER or similar

ALL BRICKWORK TO DPC TO BE STAFF SLATE BLUE or similar

- [2] FEATURE SOLDIER BRICKWORK IN MAIN FACING BRICK
[3] CONTRASTING FACING BRICKWORK TO BE STAFF SLATE BLUE BY IBSTOCK or similar
[4] RAL 7016 [ANTHRACITE GREY] UPVC WINDOWS [WHITE INTERNAL].
[5] RAL 7016 [ANTHRACITE GREY] FIBRE CEMENT BOARD BY ROCKCLAD OR SIMILAR
[6] ROOF TILES TO BE GRAMPIAN SLATE GREY BY RUSSELL or similar
[7] WHITE POWDER COATED ALUMINIUM AND PROJECTING WINDOW FRAME
[8] WHITE RENDER BAY WITH RAL 7016 UPVC WINDOW SET IN
[9] SOLDIER COURSE AS FACING BRICK
[10] FRONT DOORSET IN COLOUR PAINT FINISH TBC
[11] BALUSTRADING TO ROOF TERRACE TO BE GLASS
[12] PROJECTING BALCONY IN GLASS WITH RAL 7016 PAINTED STEEL SUPPORT.
[13] REAR WINDOWS AND DOORS TO BE IN WHITE UPVC
[14] ARTSTONE, COLOUR TBC

ALTERNATIVE ELEVATION

TRANSITION

PLOT 160,161

Scale 1:200



ALTERNATIVE ELEVATION

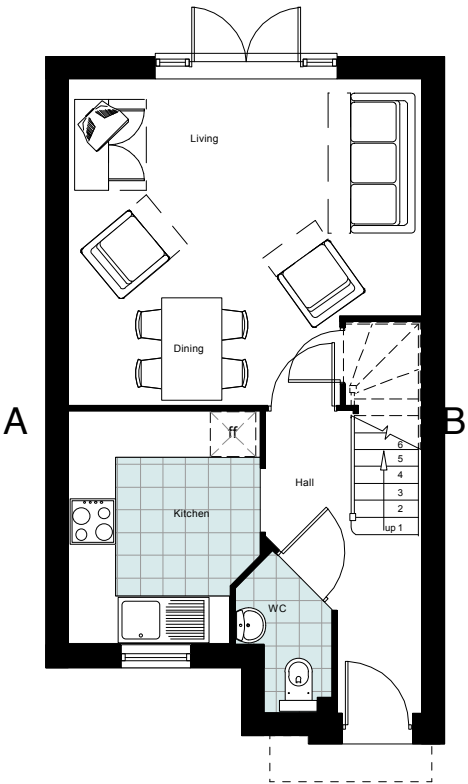
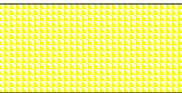
RENDER

PLOT 109-110, 158-159

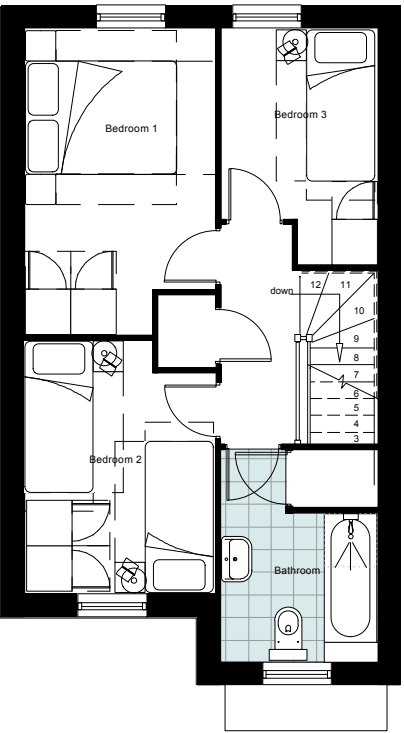
Scale 1:200



SITE PLAN COLOUR KEY



Ground Floor Plan

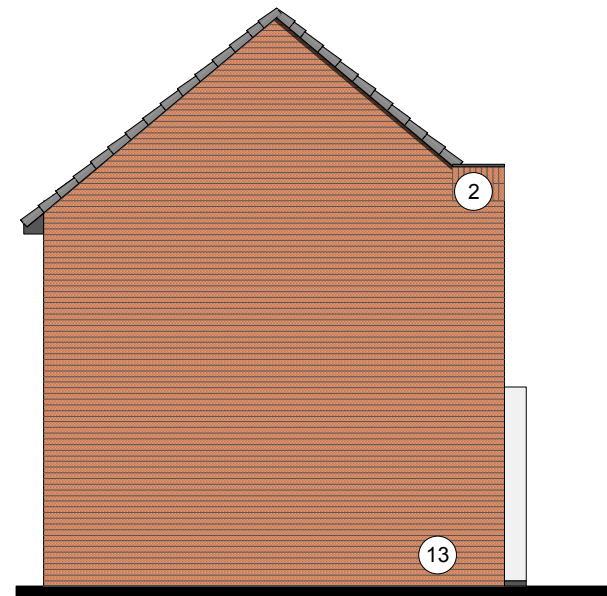


First Floor Plan





Front Elevation

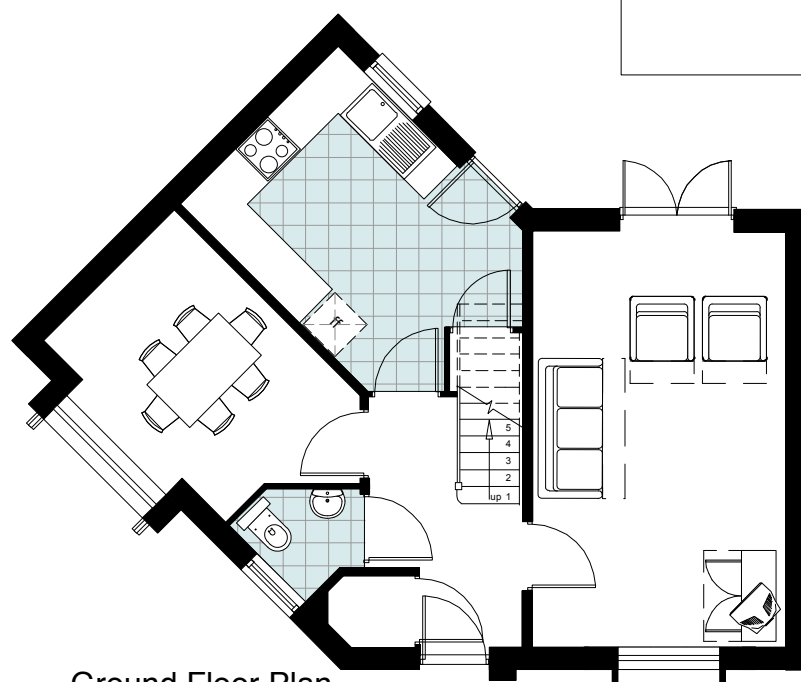


Side Elevation A

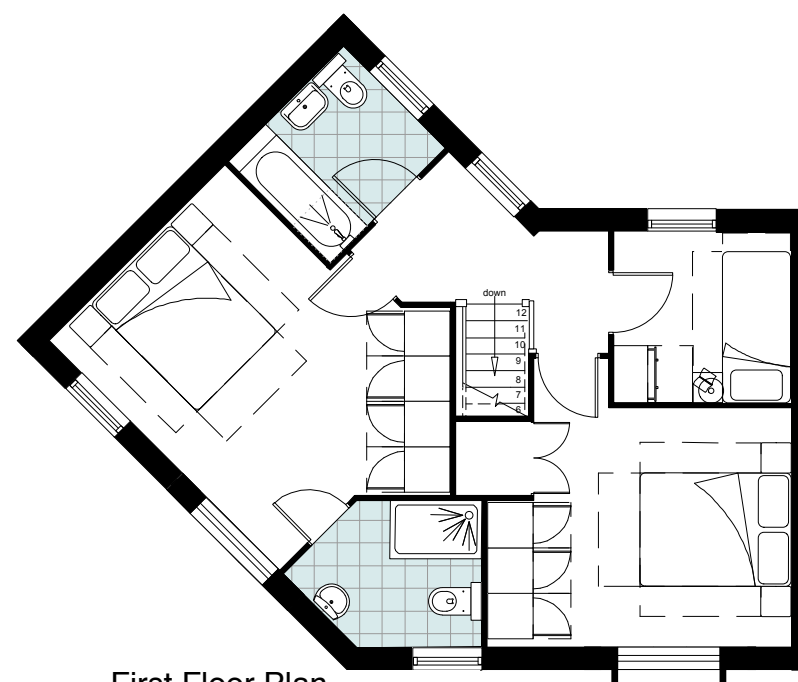


Rear Elevation

SITE PLAN COLOUR KEY



Ground Floor Plan



First Floor Plan

MATERIAL KEY

[1] MAIN FACING MATERIAL : VARIES ACROSS SITE BETWEEN 2 COMPLIMENTARY FINISHES TO GENERATE CHARACTER VARIATIONS : REFER TO MATERIAL KEY DRAWING

COMPRISING

- i] MARLBOROUGH STOCK RED / BROWN MULTI BY IBSTOCK or similar
- ii] WHITE RENDER or similar

ALL BRICKWORK UP TO DPC TO BE STAFF SLATE BLUE or similar

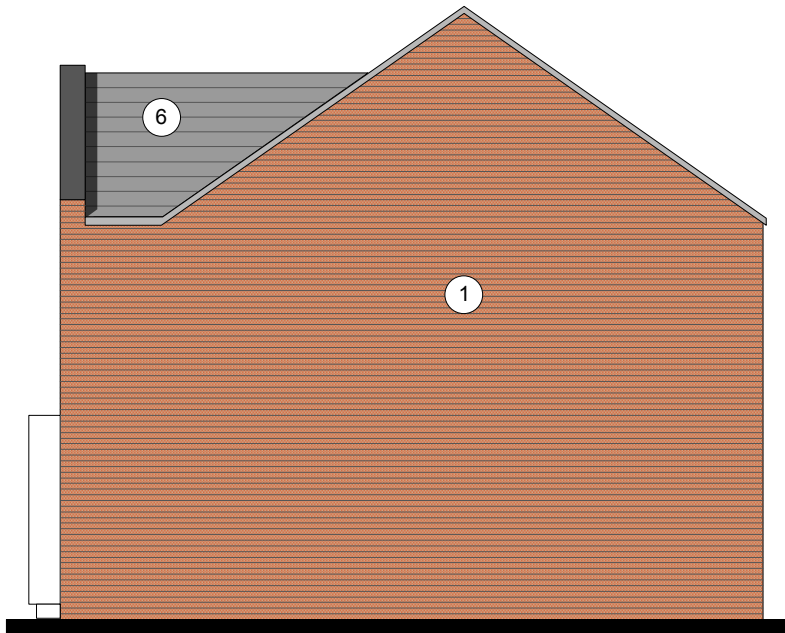
- [2] FEATURE SOLDIER BRICKWORK IN MAIN FACING BRICK
- [3] CONTRASTING FACING BRICKWORK TO BE STAFF SLATE BLUE BY IBSTOCK or similar
- [4] RAL 7016 [ANTHRACITE GREY] UPVC WINDOWS [WHITE INTERNAL].
- [5] RAL 7016 [ANTHRACITE GREY] FIBRE CEMENT BOARD BY ROCKCLAD OR SIMILAR
- [6] ROOF TILES TO BE GRAMPIAN SLATE GREY BY RUSSELL or similar
- [7] WHITE POWDER COATED ALUMINIUM SURROUND TO FORM PROJECTING WINDOW FRAME
- [8] WHITE RENDER BAY WITH RAL 7016 UPVC WINDOW SET IN
- [9] SOLDIER BRICKWORK IN FACING BRICK
- [10] FRONT DOORSET IN COLOUR PAINT FINISH TBC
- [11] BALUSTRADING TO ROOF TERRACE TO BE GLASS
- [12] PROJECTING BALCONY IN GLASS WITH RAL 7016 PAINTED STEEL SUPPORT.
- [13] REAR WINDOWS TO BE IN WHITE UPVC
- [14] STAINED SOFTWOOD TIMBER



REFER TO SITE PLAN FOR HANDING



Front Elevation



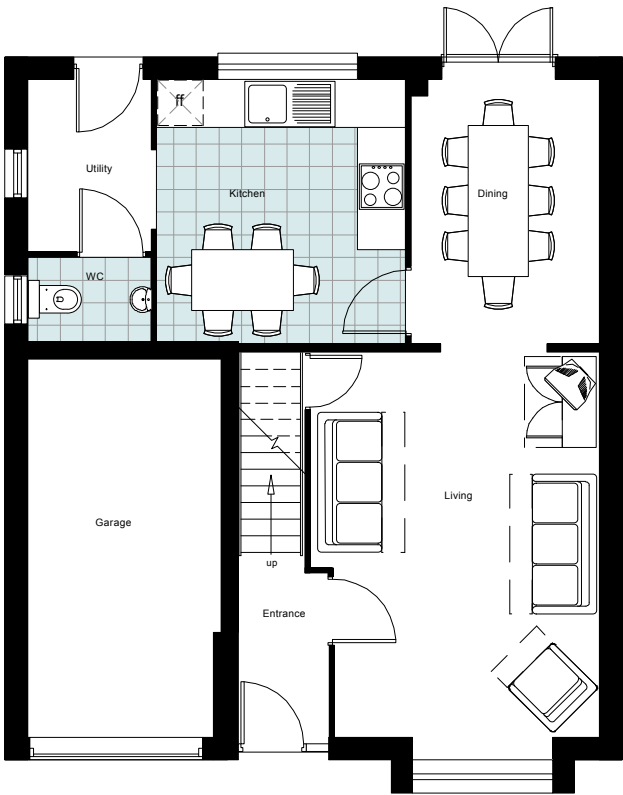
Side Elevation A



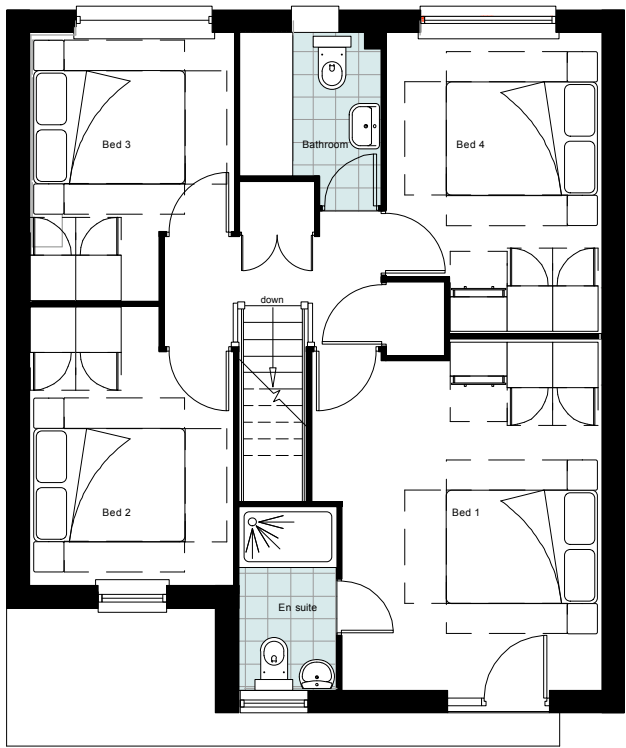
Rear Elevation



Side Elevation B



Ground Floor Plan



First Floor Plan

SITE PLAN COLOUR KEY



MATERIAL KEY

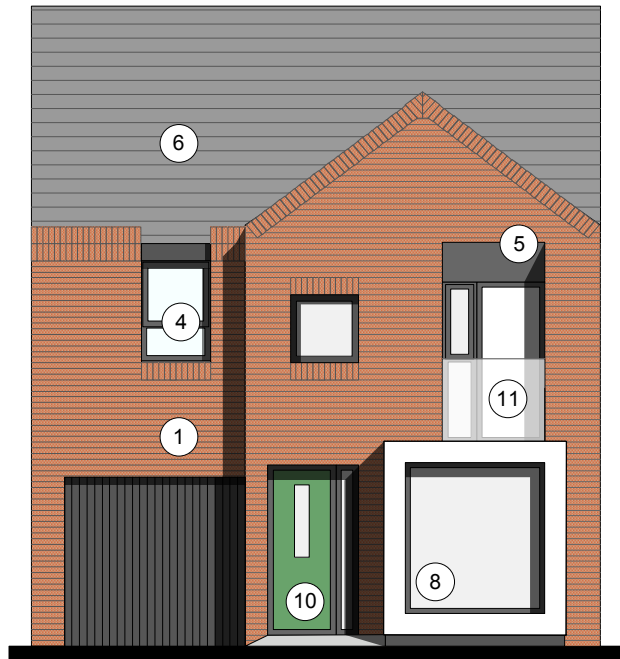
[1] MAIN FACING MATERIAL : VARIES ACROSS SITE BETWEEN 2 COMPLIMENTARY FINISHES TO GENERATE CHARACTER VARIATIONS : REFER TO MATERIAL KEY DRAWING

COMPRISING

- i] MARLBOROUGH STOCK RED / BROWN MULTI BY IBSTOCK or similar
- ii] WHITE RENDER or similar

ALL BRICKWORK UP TO DPC TO BE STAFF SLATE BLUE or similar

- [2] FEATURE SOLDIER BRICKWORK IN MAIN FACING BRICK
- [3] CONTRASTING FACING BRICKWORK TO BE STAFF SLATE BLUE BY IBSTOCK or similar
- [4] RAL 7016 [ANTHRACITE GREY] UPVC WINDOWS [WHITE INTERNAL].
- [5] RAL 7016 [ANTHRACITE GREY] FIBRE CEMENT BOARD BY ROCKCLAD OR SIMILAR
- [6] ROOF TILES TO BE GRAMPIAN SLATE GREY BY RUSSELL or similar
- [7] WHITE POWDER COATED ALUMINIUM SURROUND TO FORM PROJECTING WINDOW FRAME
- [8] WHITE RENDER BAY WITH RAL 7016 UPVC WINDOW SET IN
- [9] SOLDIER BRICKWORK IN FACING BRICK
- [10] FRONT DOORSET IN COLOUR PAINT FINISH TBC
- [11] BALUSTRADING TO ROOF TERRACE TO BE GLASS
- [12] PROJECTING BALCONY IN GLASS WITH RAL 7016 PAINTED STEEL SUPPORT.
- [13] REAR WINDOWS TO BE IN WHITE UPVC
- [14] STAINED SOFTWOOD TIMBER



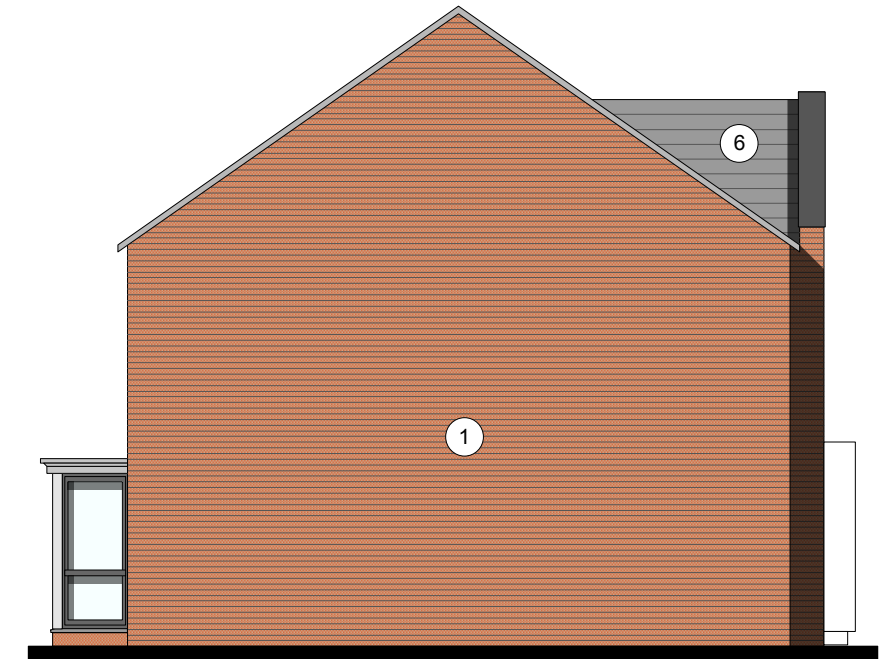
Front Elevation



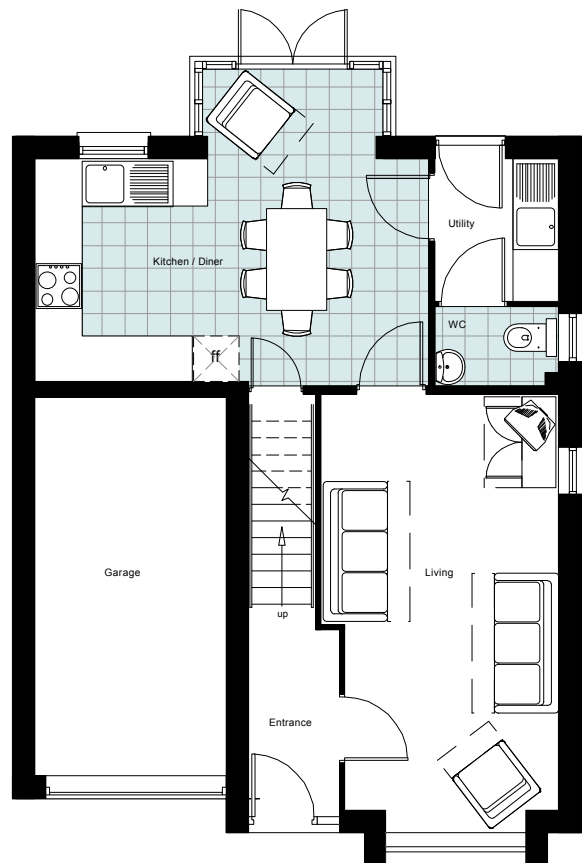
Side Elevation A



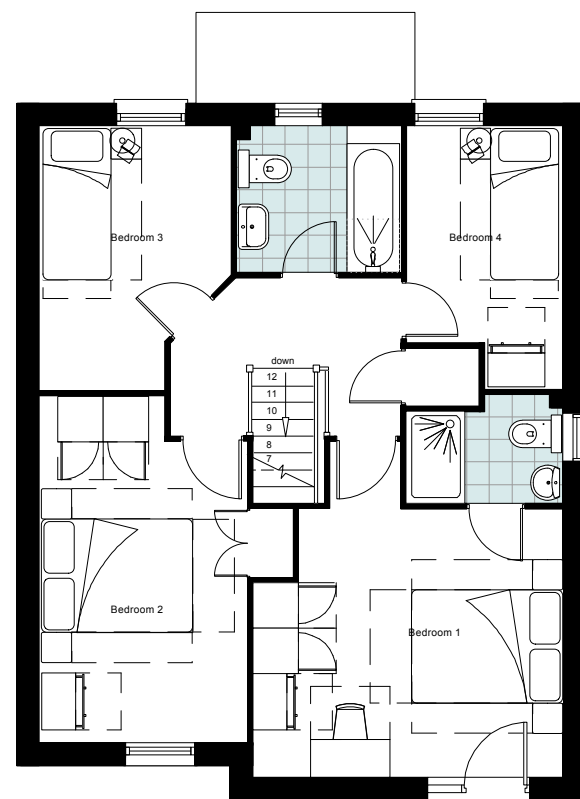
Rear Elevation



Side Elevation B



Ground Floor Plan



First Floor Plan

SITE PLAN COLOUR KEY



MATERIAL KEY

[1] MAIN FACING MATERIAL : VARIES ACROSS SITE BETWEEN 2 COMPLIMENTARY FINISHES TO GENERATE CHARACTER VARIATIONS : REFER TO MATERIAL KEY DRAWING

COMPRISING

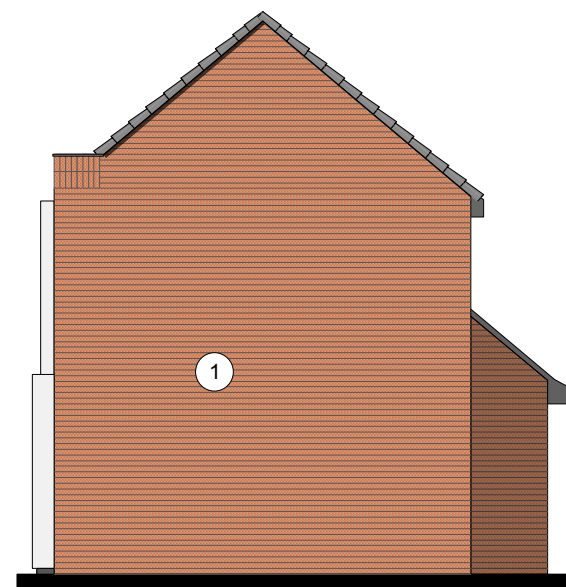
- i] MARLBOROUGH STOCK RED / BROWN MULTI BY IBSTOCK or similar
- ii] WHITE RENDER or similar

ALL BRICKWORK UP TO DPC TO BE STAFF SLATE BLUE or similar

- [2] FEATURE SOLDIER BRICKWORK IN MAIN FACING BRICK
- [3] CONTRASTING FACING BRICKWORK TO BE STAFF SLATE BLUE BY IBSTOCK or similar
- [4] RAL 7016 [ANTHRACITE GREY] UPVC WINDOWS [WHITE INTERNAL].
- [5] RAL 7016 [ANTHRACITE GREY] FIBRE CEMENT BOARD BY ROCKCLAD OR SIMILAR
- [6] ROOF TILES TO BE GRAMPIAN SLATE GREY BY RUSSELL or similar
- [7] WHITE POWDER COATED ALUMINIUM SURROUND TO FORM PROJECTING WINDOW FRAME
- [8] WHITE RENDER BAY WITH RAL 7016 UPVC WINDOW SET IN
- [9] SOLDIER BRICKWORK IN FACING BRICK
- [10] FRONT DOORSET IN COLOUR PAINT FINISH TBC
- [11] BALUSTRADING TO BE GLASS
- [12] PROJECTING BALCONY IN GLASS WITH RAL 7016 PAINTED STEEL SUPPORT.
- [13] REAR WINDOWS TO BE IN WHITE UPVC
- [14] STAINED SOFTWOOD TIMBER



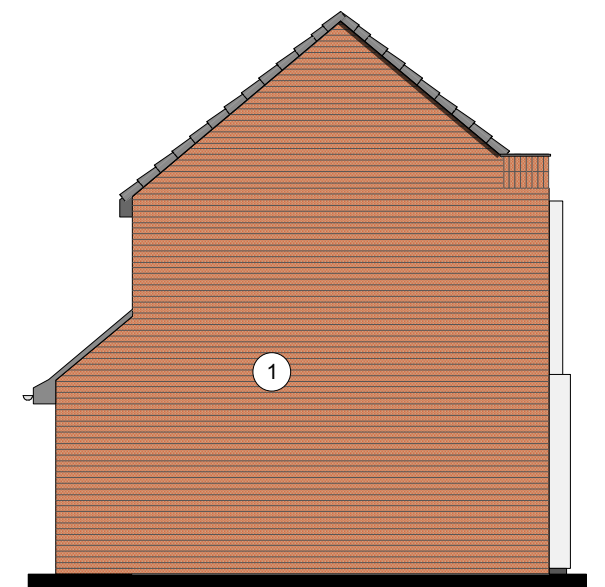
Front Elevation



Side Elevation A



Rear Elevation



Side Elevation B

MATERIAL KEY

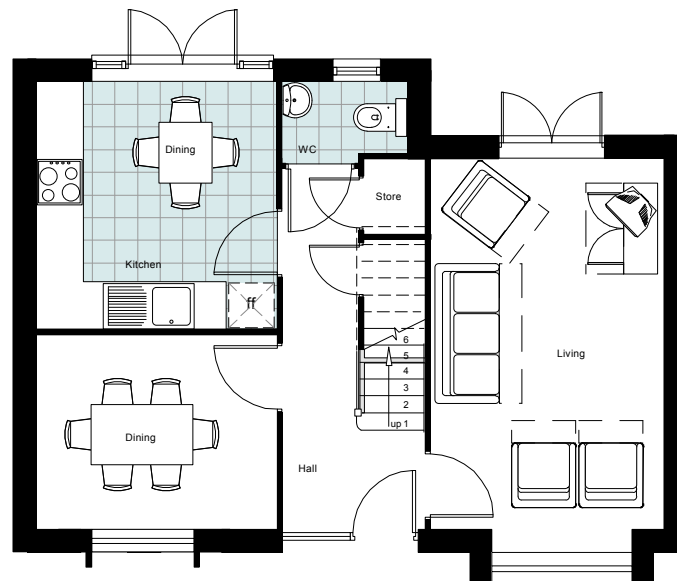
[1] MAIN FACING MATERIAL : VARIES ACROSS SITE BETWEEN 2 COMPLIMENTARY FINISHES TO GENERATE CHARACTER VARIATIONS : REFER TO MATERIAL KEY DRAWING

COMPRISING

- i] MARLBOROUGH STOCK RED / BROWN MULTI BY IBSTOCK or similar
- ii] WHITE RENDER or similar

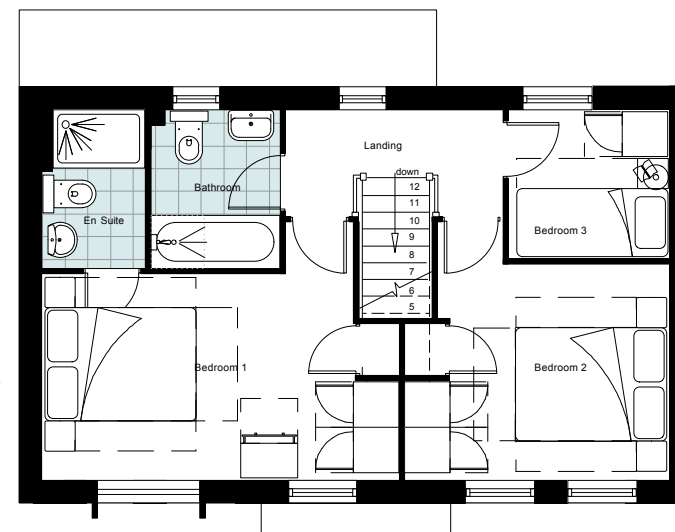
ALL BRICKWORK UP TO DPC TO BE STAFF SLATE BLUE or similar

- [2] FEATURE SOLDIER BRICKWORK IN MAIN FACING BRICK
- [3] CONTRASTING FACING BRICKWORK TO BE STAFF SLATE BLUE BY IBSTOCK or similar
- [4] RAL 7016 [ANTHRACITE GREY] UPVC WINDOWS [WHITE INTERNAL].
- [5] RAL 7016 [ANTHRACITE GREY] FIBRE CEMENT BOARD BY ROCKCLAD OR SIMILAR
- [6] ROOF TILES TO BE GRAMPIAN SLATE GREY BY RUSSELL or similar
- [7] WHITE POWDER COATED ALUMINIUM SURROUND TO FORM PROJECTING WINDOW FRAME
- [8] WHITE RENDER BAY WITH RAL 7016 UPVC WINDOW SET IN
- [9] SOLDIER BRICKWORK IN FACING BRICK
- [10] FRONT DOORSET IN COLOUR PAINT FINISH TBC
- [11] BALUSTRADING TO BE GLASS
- [12] PROJECTING BALCONY IN GLASS WITH RAL 7016 PAINTED STEEL SUPPORT.
- [13] REAR WINDOWS TO BE IN WHITE UPVC
- [14] STAINED SOFTWOOD TIMBER

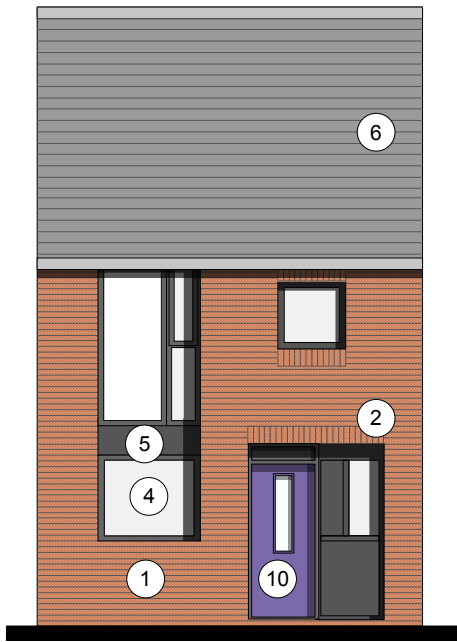


Ground Floor Plan

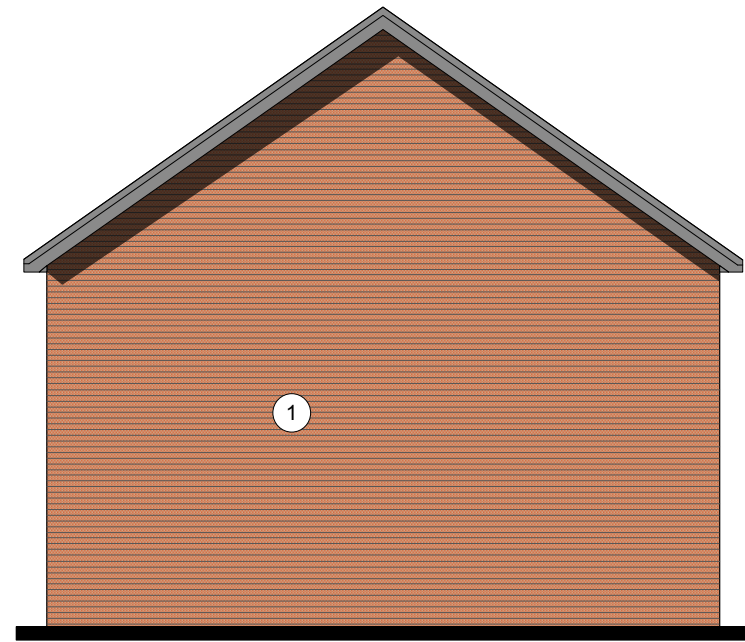
SITE PLAN COLOUR KEY



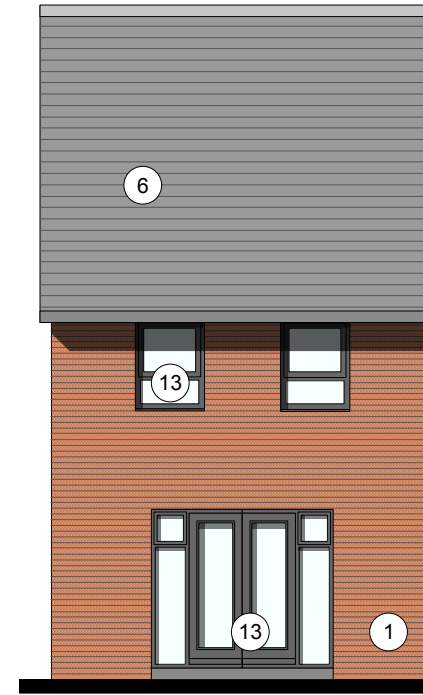
First Floor Plan



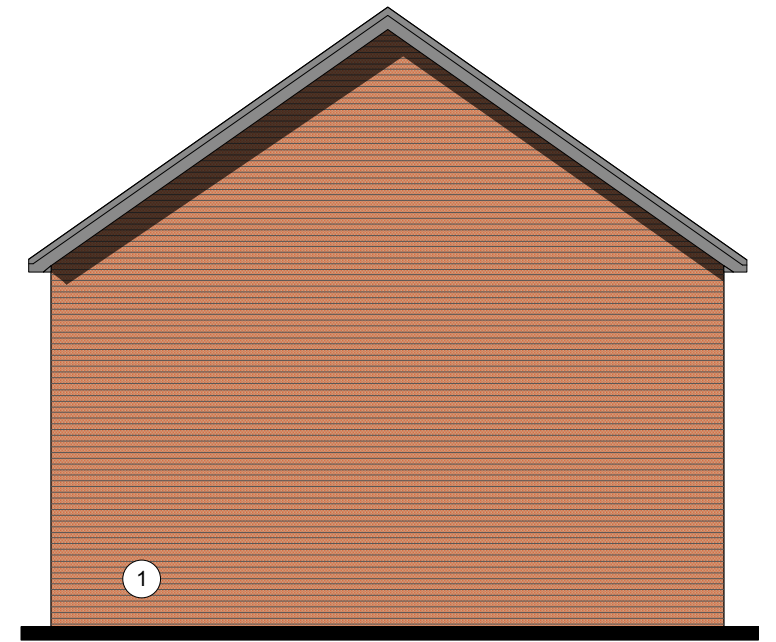
Front Elevation



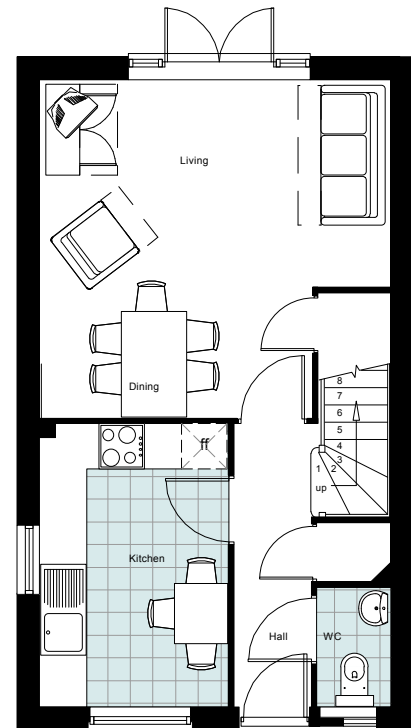
Side Elevation A



Rear Elevation

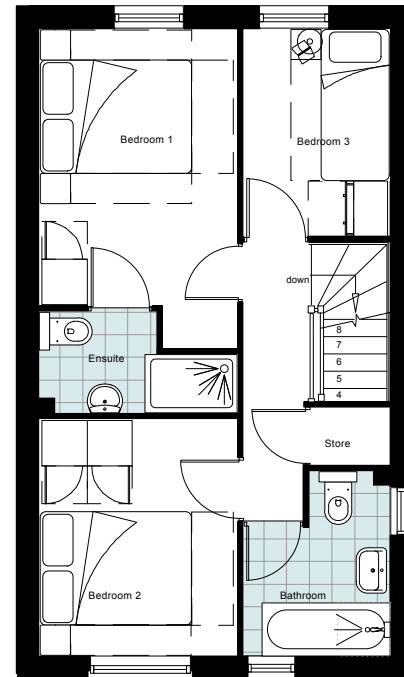


Side Elevation B



Ground Floor Plan

SITE PLAN COLOUR KEY



First Floor Plan

MATERIAL KEY

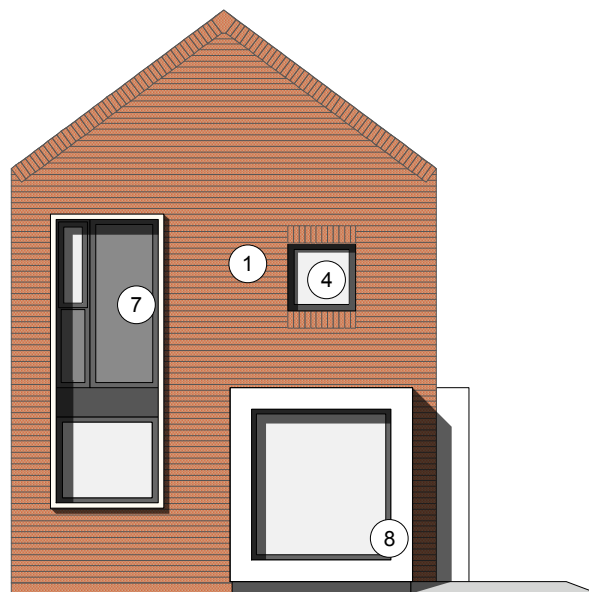
[1] MAIN FACING MATERIAL : VARIES ACROSS SITE BETWEEN 2 COMPLIMENTARY FINISHES TO GENERATE CHARACTER VARIATIONS : REFER TO MATERIAL KEY DRAWING

COMPRISING

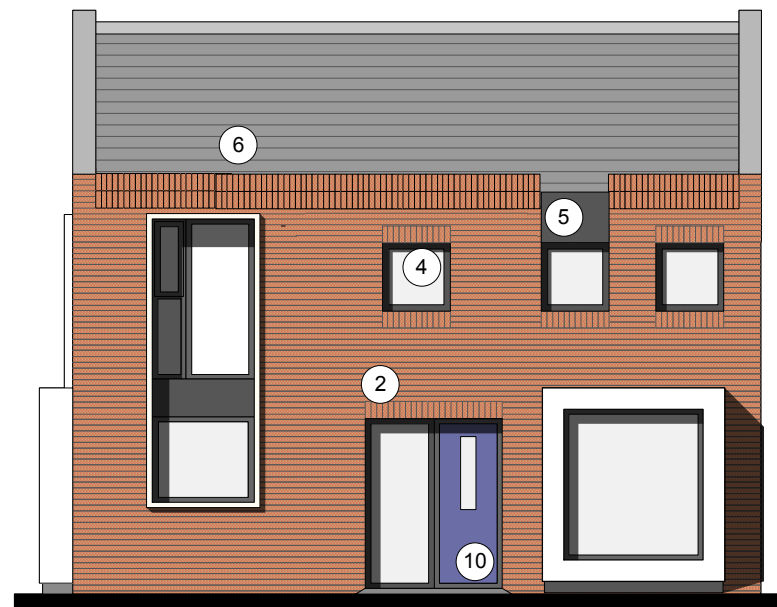
- i] MARLBOROUGH STOCK RED / BROWN MULTI BY IBSTOCK or similar
- ii] WHITE RENDER or similar

ALL BRICKWORK UP TO DPC TO BE STAFF SLATE BLUE or similar

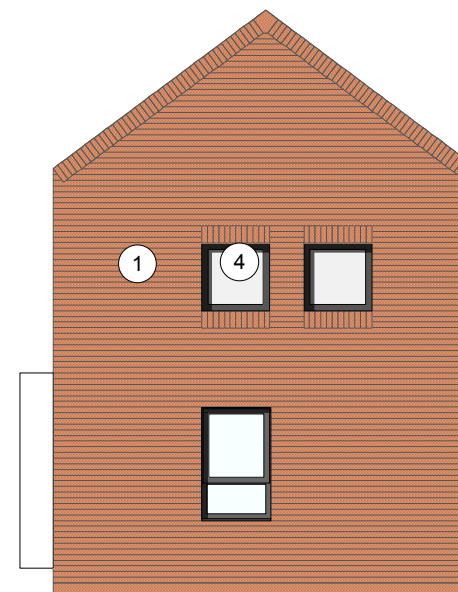
- [2] FEATURE SOLDIER BRICKWORK IN MAIN FACING BRICK
- [3] CONTRASTING FACING BRICKWORK TO BE STAFF SLATE BLUE BY IBSTOCK or similar
- [4] RAL 7016 [ANTHRACITE GREY] UPVC WINDOWS [WHITE INTERNAL].
- [5] RAL 7016 [ANTHRACITE GREY] FIBRE CEMENT BOARD BY ROCKCLAD OR SIMILAR
- [6] ROOF TILES TO BE GRAMPIAN SLATE GREY BY RUSSELL or similar
- [7] WHITE POWDER COATED ALUMINIUM SURROUND TO FORM PROJECTING WINDOW FRAME
- [8] WHITE RENDER BAY WITH RAL 7016 UPVC WINDOW SET IN
- [9] SOLDIER BRICKWORK IN FACING BRICK
- [10] FRONT DOORSET IN COLOUR PAINT FINISH TBC
- [11] BALUSTRADING TO BE GLASS
- [12] PROJECTING BALCONY IN GLASS WITH RAL 7016 PAINTED STEEL SUPPORT.
- [13] REAR WINDOWS TO BE IN WHITE UPVC
- [14] STAINED SOFTWOOD TIMBER



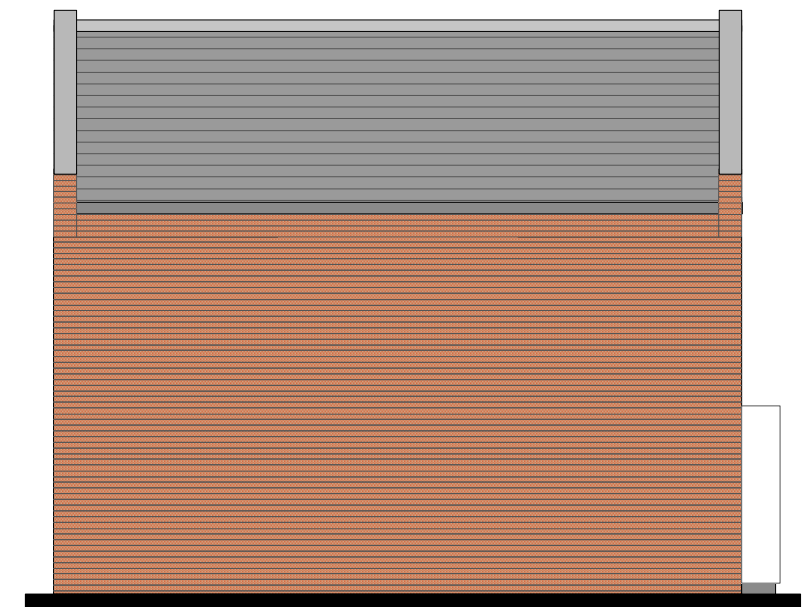
Front Elevation



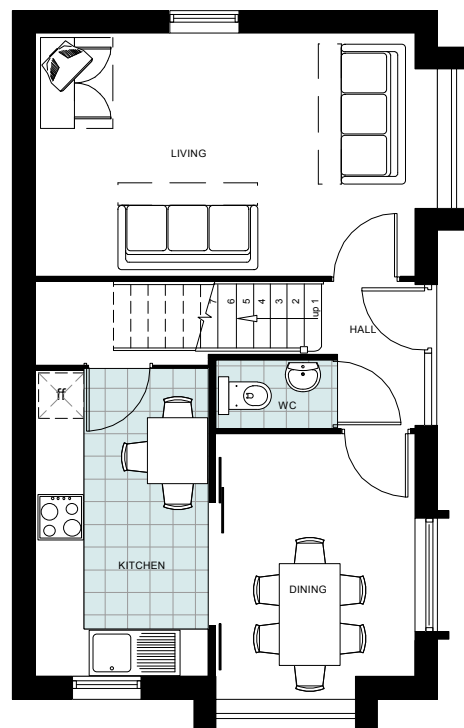
Side Elevation A



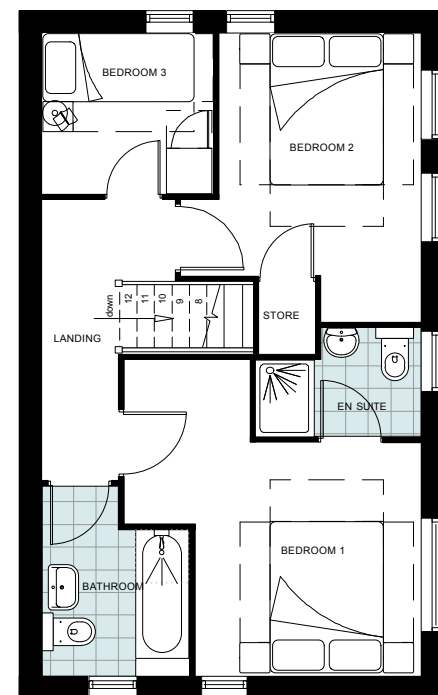
Rear Elevation



Side Elevation B



Ground Floor Plan



First Floor Plan

SITE PLAN COLOUR KEY



MATERIAL KEY

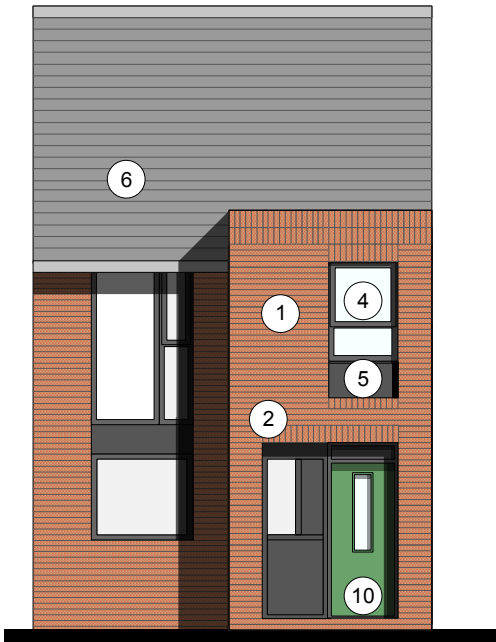
[1] MAIN FACING MATERIAL : VARIES ACROSS SITE BETWEEN 2 COMPLIMENTARY FINISHES TO GENERATE CHARACTER VARIATIONS : REFER TO MATERIAL KEY DRAWING

COMPRISING

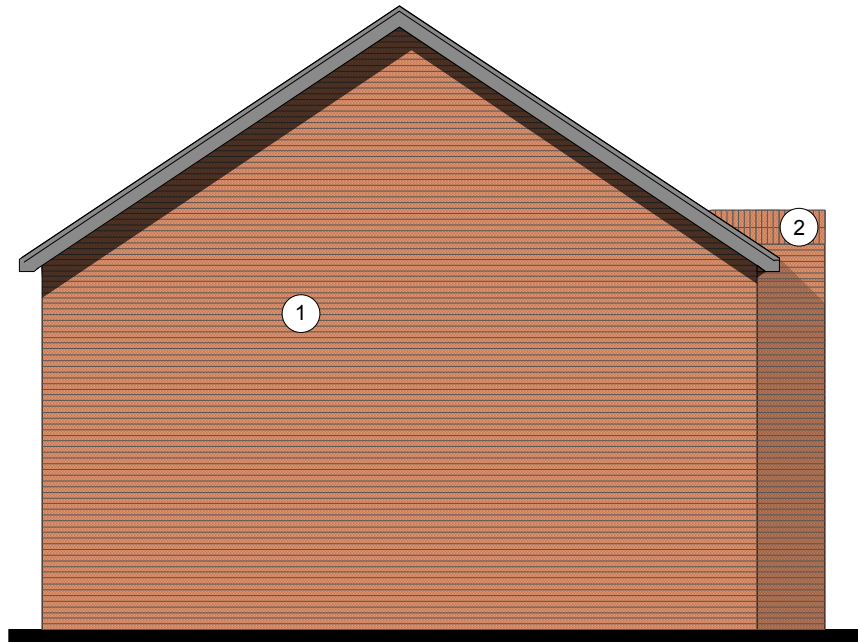
- i] MARLBOROUGH STOCK RED / BROWN MULTI BY IBSTOCK or similar
- ii] WHITE RENDER or similar

ALL BRICKWORK UP TO DPC TO BE STAFF SLATE BLUE or similar

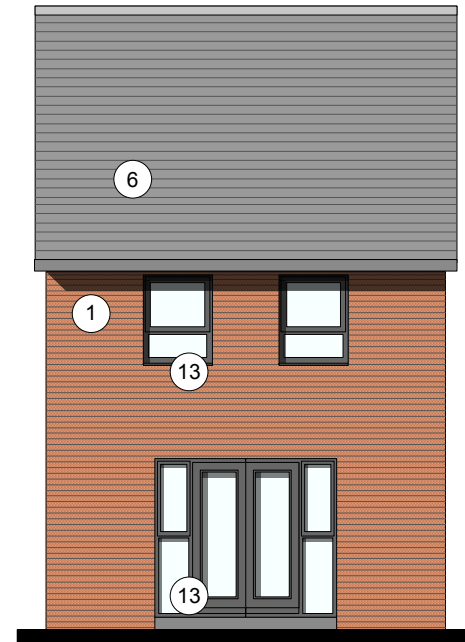
- [2] FEATURE SOLDIER BRICKWORK IN MAIN FACING BRICK
- [3] CONTRASTING FACING BRICKWORK TO BE STAFF SLATE BLUE BY IBSTOCK or similar
- [4] RAL 7016 [ANTHRACITE GREY] UPVC WINDOWS [WHITE INTERNAL].
- [5] RAL 7016 [ANTHRACITE GREY] FIBRE CEMENT BOARD BY ROCKCLAD OR SIMILAR
- [6] ROOF TILES TO BE GRAMPIAN SLATE GREY BY RUSSELL or similar
- [7] WHITE POWDER COATED ALUMINIUM SURROUND TO FORM PROJECTING WINDOW FRAME
- [8] WHITE RENDER BAY WITH RAL 7016 UPVC WINDOW SET IN
- [9] SOLDIER BRICKWORK IN FACING BRICK
- [10] FRONT DOORSET IN COLOUR PAINT FINISH TBC
- [11] BALUSTRADING TO BE GLASS
- [12] PROJECTING BALCONY IN GLASS WITH RAL 7016 PAINTED STEEL SUPPORT.
- [13] REAR WINDOWS TO BE IN WHITE UPVC
- [14] STAINED SOFTWOOD TIMBER



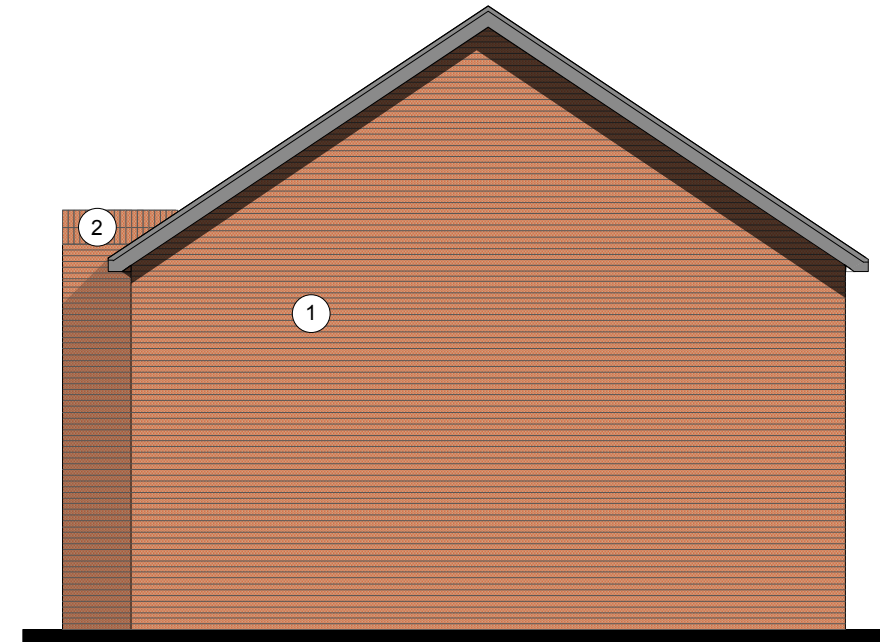
Front Elevation



Side Elevation A



Rear Elevation



Side Elevation B

MATERIAL KEY

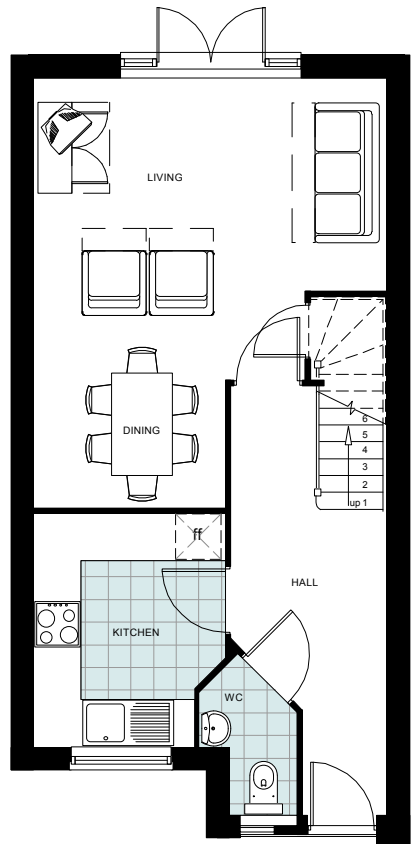
[1] MAIN FACING MATERIAL : VARIES ACROSS SITE BETWEEN 2 COMPLIMENTARY FINISHES TO GENERATE CHARACTER VARIATIONS : REFER TO MATERIAL KEY DRAWING

COMPRISING

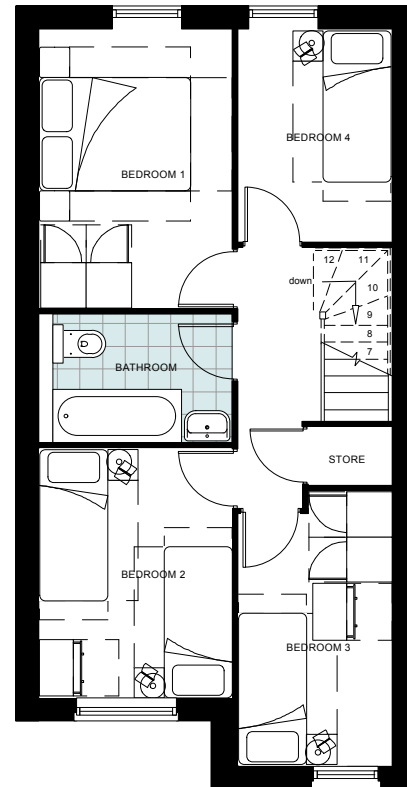
- i] MARLBOROUGH STOCK RED / BROWN MULTI BY IBSTOCK or similar
- ii] WHITE RENDER or similar

ALL BRICKWORK UP TO DPC TO BE STAFF SLATE BLUE or similar

- [2] FEATURE SOLDIER BRICKWORK IN MAIN FACING BRICK
- [3] CONTRASTING FACING BRICKWORK TO BE STAFF SLATE BLUE BY IBSTOCK or similar
- [4] RAL 7016 [ANTHRACITE GREY] UPVC WINDOWS [WHITE INTERNAL].
- [5] RAL 7016 [ANTHRACITE GREY] FIBRE CEMENT BOARD BY ROCKCLAD OR SIMILAR
- [6] ROOF TILES TO BE GRAMPIAN SLATE GREY BY RUSSELL or similar
- [7] WHITE POWDER COATED ALUMINIUM SURROUND TO FORM PROJECTING WINDOW FRAME
- [8] WHITE RENDER BAY WITH RAL 7016 UPVC WINDOW SET IN
- [9] SOLDIER BRICKWORK IN FACING BRICK
- [10] FRONT DOORSET IN COLOUR PAINT FINISH TBC
- [11] BALUSTRADING TO BE GLASS
- [12] PROJECTING BALCONY IN GLASS WITH RAL 7016 PAINTED STEEL SUPPORT.
- [13] REAR WINDOWS TO BE IN WHITE UPVC
- [14] STAINED SOFTWOOD TIMBER

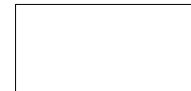


Ground Floor Plan



First Floor Plan

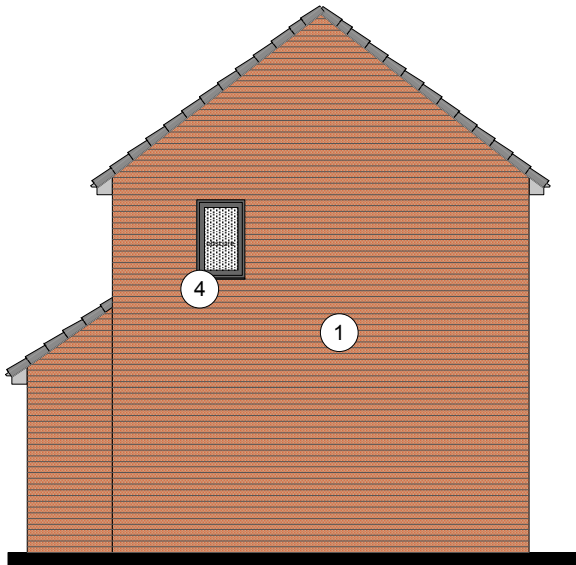
SITE PLAN COLOUR KEY



Front Elevation



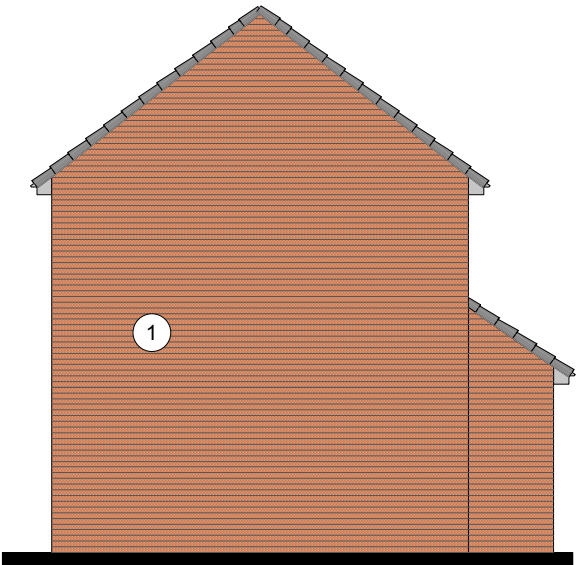
Side Elevation A



Rear Elevation

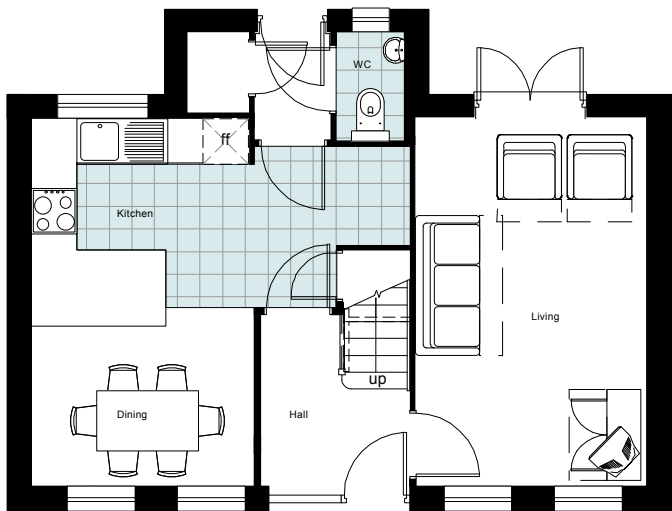


Side Elevation B

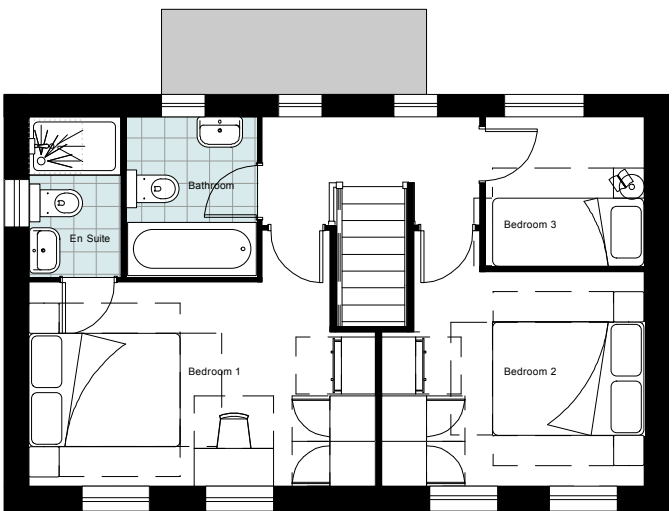


MATERIAL KEY

- [1] MAIN FACING MATERIAL : VARIES ACROSS SITE BETWEEN 2 COMPLIMENTARY FINISHES TO GENERATE CHARACTER VARIATIONS : REFER TO MATERIAL KEY DRAWING
- COMPRISING
- i] MARLBOROUGH STOCK RED / BROWN MULTI BY IBSTOCK or similar
- ii] WHITE RENDER or similar
- ALL BRICKWORK TO DPC TO BE STAFF SLATE BLUE or similar
- [2] FEATURE SOLDIER BRICKWORK IN MAIN FACING BRICK
- [3] CONTRASTING FACING BRICKWORK TO BE STAFF SLATE BLUE BY IBSTOCK or similar
- [4] RAL 7016 [ANTHRACITE GREY] UPVC WINDOWS [WHITE INTERNAL].
- [5] RAL 7016 [ANTHRACITE GREY] FIBRE CEMENT BOARD BY ROCKCLAD OR SIMILAR
- [6] ROOF TILES TO BE GRAMPIAN SLATE GREY BY RUSSELL or similar
- [7] WHITE POWDER COATED ALUMINIUM AND PROJECTING WINDOW FRAME
- [8] WHITE RENDER BAY WITH RAL 7016 UPVC WINDOW SET IN
- [9] SOLDIER COURSE AS FACING BRICK
- [10] FRONT DOORSET IN COLOUR PAINT FINISH TBC
- [11] BALUSTRADING TO ROOF TERRACE TO BE GLASS
- [12] PROJECTING BALCONY IN GLASS WITH RAL 7016 PAINTED STEEL SUPPORT.
- [13] REAR WINDOWS AND DOORS TO BE IN WHITE UPVC
- [14] ARTSTONE, COLOUR TBC



Ground Floor Plan



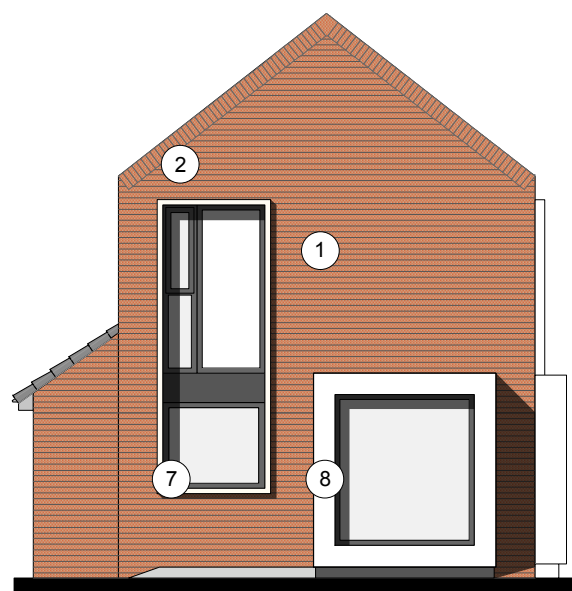
First Floor Plan

SITE PLAN COLOUR KEY





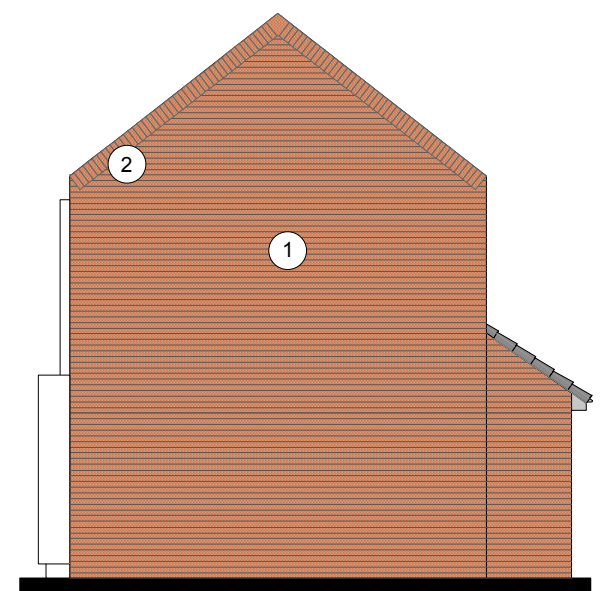
Front Elevation



Side Elevation A

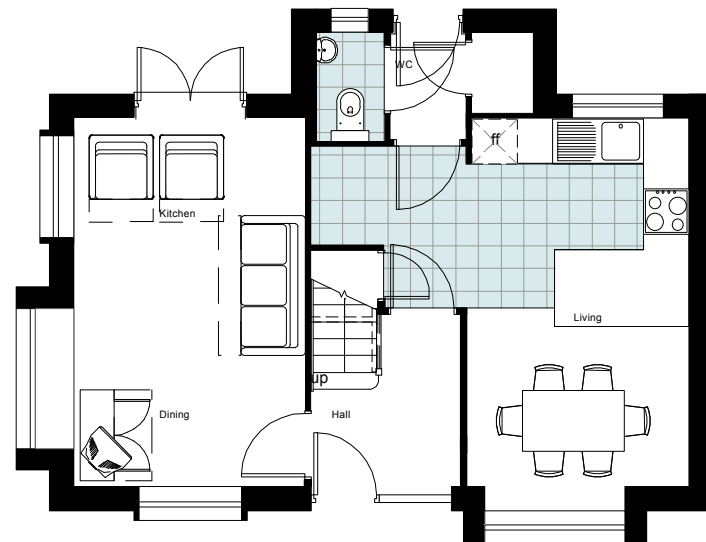


Rear Elevation

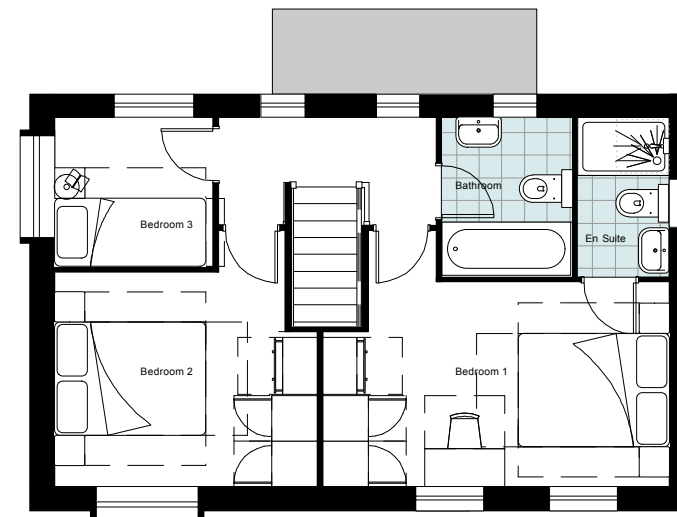


Side Elevation B

SITE PLAN COLOUR KEY



Ground Floor Plan



First Floor Plan

MATERIAL KEY

[1] MAIN FACING MATERIAL : VARIES ACROSS SITE BETWEEN 2 COMPLIMENTARY FINISHES TO GENERATE CHARACTER VARIATIONS : REFER TO MATERIAL KEY DRAWING

COMPRISING

- i] MARLBOROUGH STOCK RED / BROWN MULTI BY IBSTOCK or similar
- ii] WHITE RENDER or similar

ALL BRICKWORK UP TO DPC TO BE STAFF SLATE BLUE or similar

- [2] FEATURE SOLDIER BRICKWORK IN MAIN FACING BRICK
- [3] CONTRASTING FACING BRICKWORK TO BE STAFF SLATE BLUE BY IBSTOCK or similar
- [4] RAL 7016 [ANTHRACITE GREY] UPVC WINDOWS [WHITE INTERNAL].
- [5] RAL 7016 [ANTHRACITE GREY] FIBRE CEMENT BOARD BY ROCKCLAD OR SIMILAR
- [6] ROOF TILES TO BE GRAMPIAN SLATE GREY BY RUSSELL or similar
- [7] WHITE POWDER COATED ALUMINIUM SURROUND TO FORM PROJECTING WINDOW FRAME
- [8] WHITE RENDER BAY WITH RAL 7016 UPVC WINDOW SET IN
- [9] SOLDIER BRICKWORK IN FACING BRICK
- [10] FRONT DOORSET IN COLOUR PAINT FINISH TBC
- [11] BALUSTRADING TO BE GLASS
- [12] PROJECTING BALCONY IN GLASS WITH RAL 7016 PAINTED STEEL SUPPORT.
- [13] REAR WINDOWS TO BE IN WHITE UPVC
- [14] STAINED SOFTWOOD TIMBER

Front Elevation



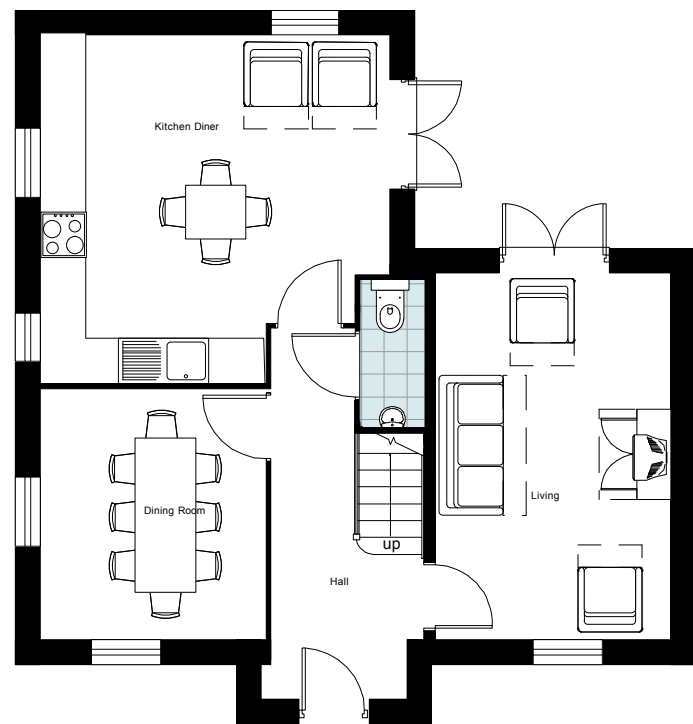
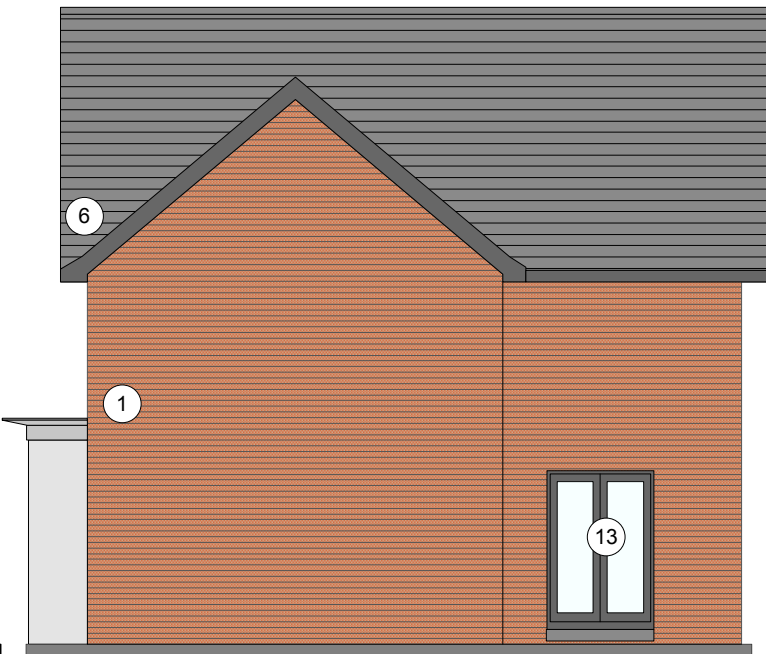
Side Elevation A



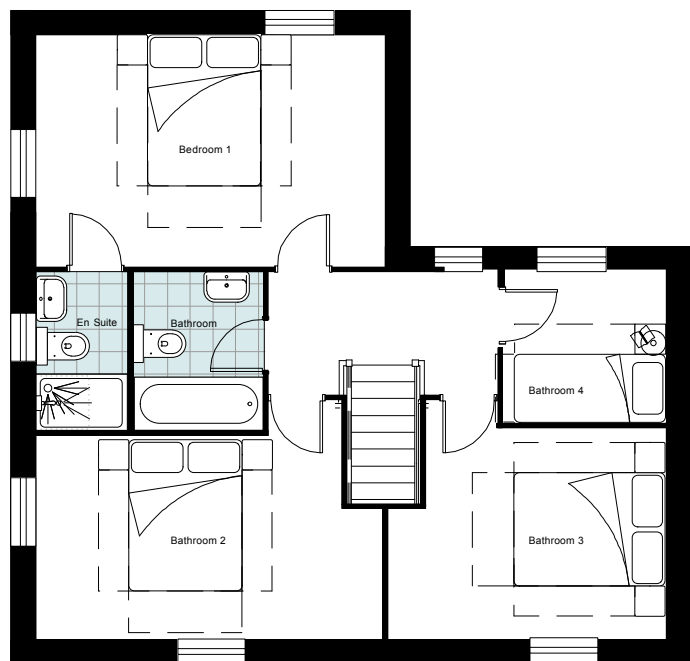
Rear Elevation



Side Elevation B



Ground Floor Plan



First Floor Plan

SITE PLAN COLOUR KEY



MATERIAL KEY

[1] MAIN FACING MATERIAL : VARIES ACROSS SITE BETWEEN 2 COMPLIMENTARY FINISHES TO GENERATE CHARACTER VARIATIONS : REFER TO MATERIAL KEY DRAWING

COMPRISING

- i] MARLBOROUGH STOCK RED / BROWN MULTI BY IBSTOCK or similar
- ii] WHITE RENDER or similar

ALL BRICKWORK TO DPC TO BE STAFF SLATE BLUE or similar

- [2] FEATURE SOLDIER BRICKWORK IN MAIN FACING BRICK
- [3] CONTRASTING FACING BRICKWORK TO BE STAFF SLATE BLUE BY IBSTOCK or similar
- [4] RAL 7016 [ANTHRACITE GREY] UPVC WINDOWS [WHITE INTERNAL].
- [5] RAL 7016 [ANTHRACITE GREY] FIBRE CEMENT BOARD BY ROCKCLAD OR SIMILAR
- [6] ROOF TILES TO BE GRAMPIAN SLATE GREY BY RUSSELL or similar
- [7] WHITE POWDER COATED ALUMINIUM AND PROJECTING WINDOW FRAME
- [8] WHITE RENDER BAY WITH RAL 7016 UPVC WINDOW SET IN
- [9] SOLDIER COURSE AS FACING BRICK
- [10] FRONT DOORSET IN COLOUR PAINT FINISH TBC
- [11] BALUSTRADING TO ROOF TERRACE TO BE GLASS
- [12] PROJECTING BALCONY IN GLASS WITH RAL 7016 PAINTED STEEL SUPPORT.
- [13] REAR WINDOWS AND DOORS TO BE IN WHITE UPVC
- [14] ARTSTONE, COLOUR TBC