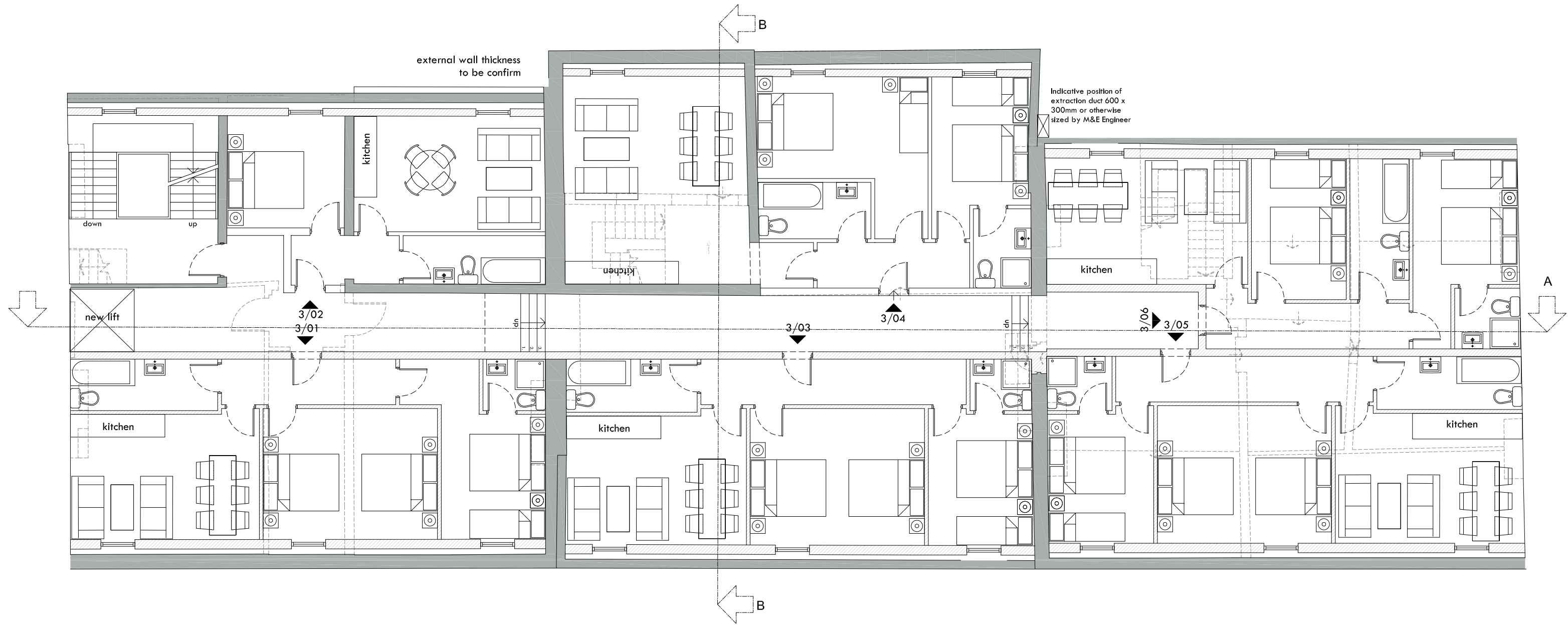


Proposed Second Floor Plan

Gross internal area: 461.7m<sup>2</sup> (4969.7ft<sup>2</sup>)



Proposed Third Floor Plan

Gross internal area: 438.3m<sup>2</sup> (4717.8ft<sup>2</sup>)

Key:

- Removed
- Existing construction
- New construction
- Retail/A3 uses to Iliad's retained areas

