



East Elevation

1
1 : 200



North Elevation

2
1 : 200



South Elevation

3
1 : 200



West Elevation

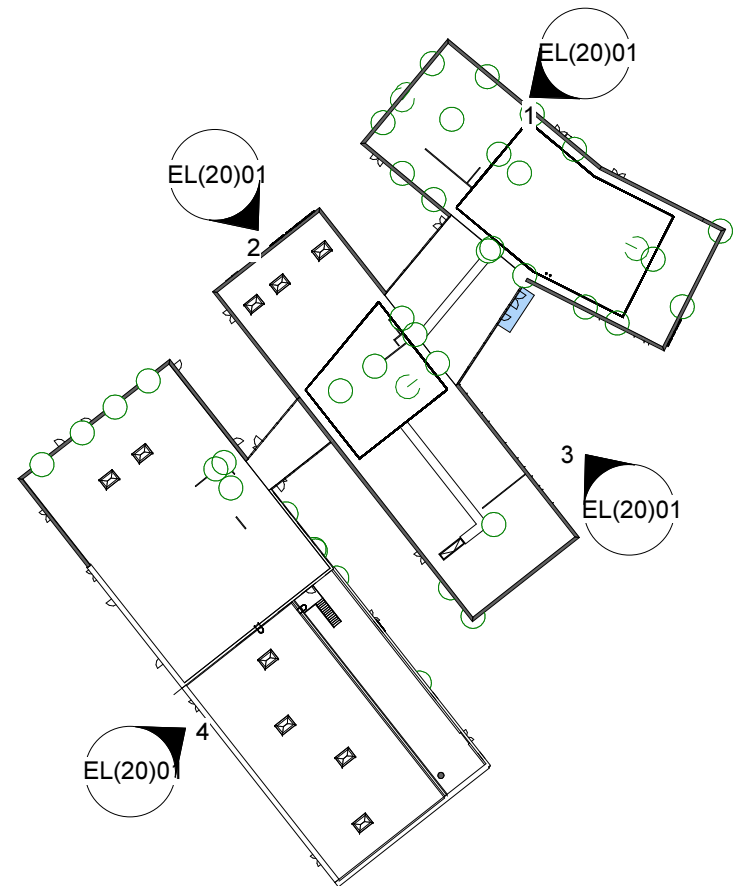
4
1 : 200

Notes:

- This drawing is copyright.
- Do not scale dimensions from this drawing.
- This drawing is to be read in conjunction with all other relevant drawings.
- All discrepancies on this drawing are to be reported to the architect.
- Do not modify any element of this drawing.
- Use drawing only for purpose(s) issued.

North Sign / Key Plan

The following external model files are included within this drawing:



Elevations Key Plan

5
1 : 1000

Rev	Date	Revision Notes	Dn	Rv
C	26.02.15	Amendments made to co-ordinate with engineering. Re-submitted to planning.	LE	
B	23.01.15	Windows added to MPL classrooms on West elevation. Sports hall door moved from South to West elevation.	LE	
A	23.12.14	Issued for Planning	LE	

Client
LCC / Kier Northern
Construction

Intelligence
Buildings
Infrastructure

Project
St. Julie's Catholic High School

Drawing Title
GA Elevations

Job Number 6629	Drawing Originated Date	PAS 1192 Status Code
Scale@A1 As indicated	Purpose	
Drawing Number EL(20)01	Revision C	