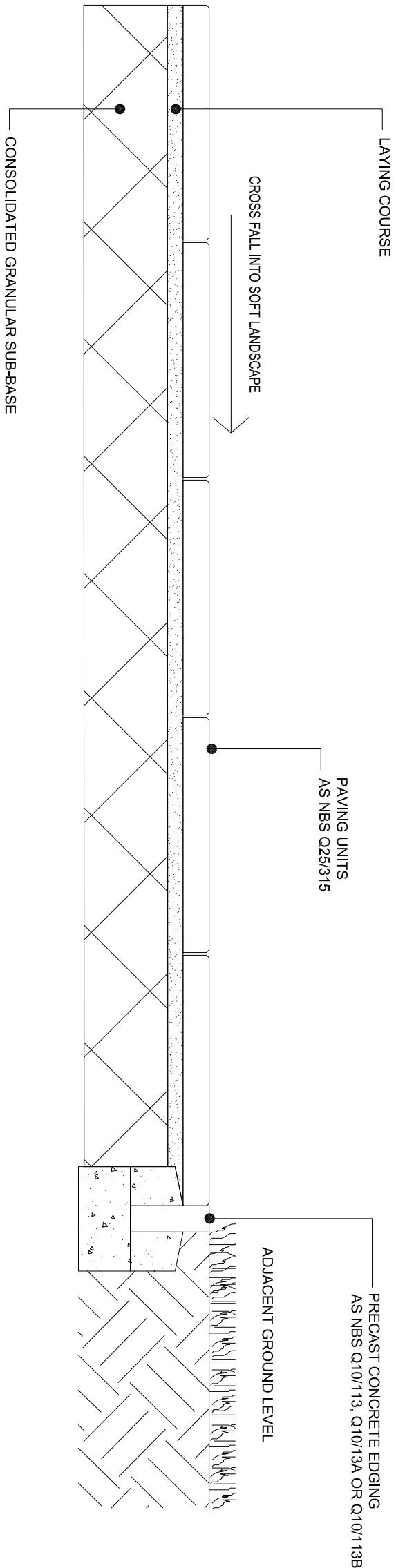
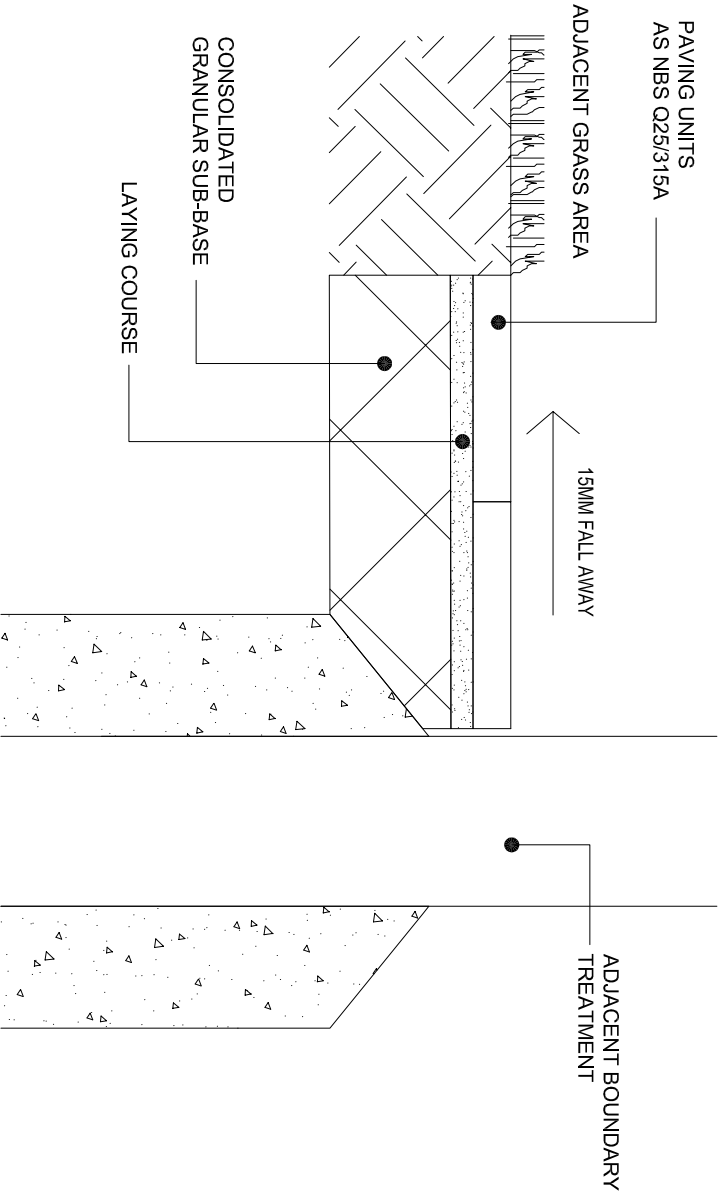


CONCRETE FLAG PAVING TO PATHS AND PEDESTRIAN AREAS  
AS NBS Q25/120



CONCRETE FLAG PAVING TO MOWING TRIM ADJACENT TO BUILDINGS/WALLS  
AS NBS Q25/120A



- NOTES:
- 1) UNDER NO CIRCUMSTANCES SHOULD DIMENSIONS BE SCALED FROM THIS DRAWING. IF IN DOUBT, ASK
  - 2) THIS DRAWING IS TO BE READ IN CONJUNCTION WITH ALL OTHER RELEVANT DRAWINGS. ANY DISCREPANCIES, ERRORS OR OMISSIONS TO BE BROUGHT TO THE ATTENTION OF TAYLOR YOUNG.
  - 3) ALL DIMENSIONS TO BE CHECKED BEFORE COMMENCEMENT
  - 4) THIS DRAWING IS THE PROPERTY OF TAYLOR YOUNG AND MUST NOT BE COPIED OR REPRODUCED EITHER IN WHOLE OR IN PART WITHOUT WRITTEN PERMISSION

drawing originated by: DM	date: 27/06/12	
revisions	drawn/reviewed	date
REV A	KR/DG	31/07/12
For planning submission.		
REV B	JE/DM	10/12/12
Drawing updated to match Landscape Specification. Titles and annotation amended. Consolidated subgrade removed from drawings.		

FOR CONSTRUCTION

LIVERPOOL MUTUAL HOMES  
ENVIRONMENTALS

TYPICAL DETAILS - CONCRETE FLAG  
PAVING

Scale: 1:10@A3  
Reviewed by : DG

job	drawing	rev
5898	DT(90)00	B

taylor young|ty

chadsworth house  
wilmslow road  
handforth  
cheshire  
sk9 3hp

tel: 01625 542 200  
fax: 01625 542 250  
mail@tayloryoung.co.uk  
www.tayloryoung.co.uk



architecture  
graphics  
healthcare planning  
interior design  
landscape architecture  
regeneration  
town planning  
urban design  
3D visualisation

NOTES:

- 1) UNDER NO CIRCUMSTANCES SHOULD DIMENSIONS BE SCALED FROM THIS DRAWING. IF IN DOUBT, ASK
- 2) THIS DRAWING IS TO BE READ IN CONJUNCTION WITH ALL OTHER RELEVANT DRAWINGS. ANY DISCREPANCIES, ERRORS OR OMISSIONS TO BE BROUGHT TO THE ATTENTION OF TAYLOR YOUNG.
- 3) ALL DIMENSIONS TO BE CHECKED BEFORE COMMENCEMENT
- 4) THIS DRAWING IS THE PROPERTY OF TAYLOR YOUNG AND MUST NOT BE COPIED OR REPRODUCED EITHER IN WHOLE OR IN PART WITHOUT WRITTEN PERMISSION

drawing originated by : DM	date: 27/06/12
revisions	drawn//reviewed
REV A	KR/DG
For planning submission.	31/07/12
REV B	JE/DM
HBK NBS reference updated. Annotation amended to match spec.	10/12/12

FOR CONSTRUCTION

LIVERPOOL MUTUAL HOMES  
ENVIRONMENTALS

TYPICAL DETAILS - KERBS AND  
EDGINGS

Scale: 1:5@A3  
Reviewed by : DG

job	drawing	rev
5898	DT(90)01	B

taylor young|ty

chadsworth house  
wilmslow road  
handforth  
cheshire  
sk9 3hp

tel: 01625 542 200  
fax: 01625 542 250  
mail@tayloryoung.co.uk  
www.tayloryoung.co.uk



ENIS 77584 7584  
BS EN10 7400 2004

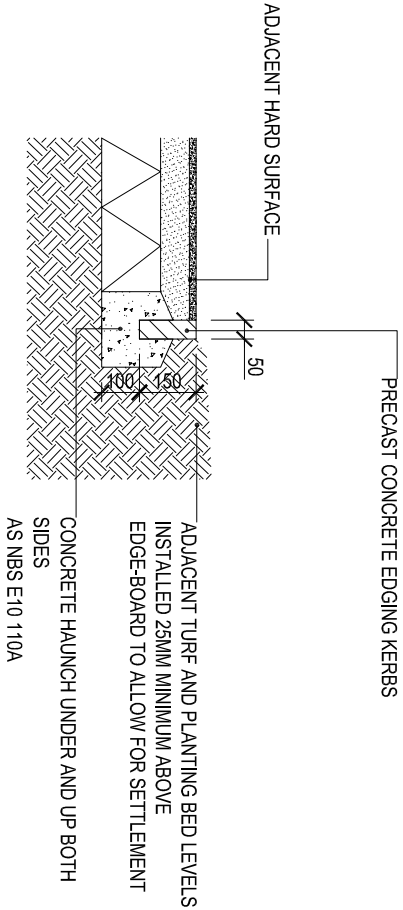


ISO 9001 2008  
ISO 14001 2004

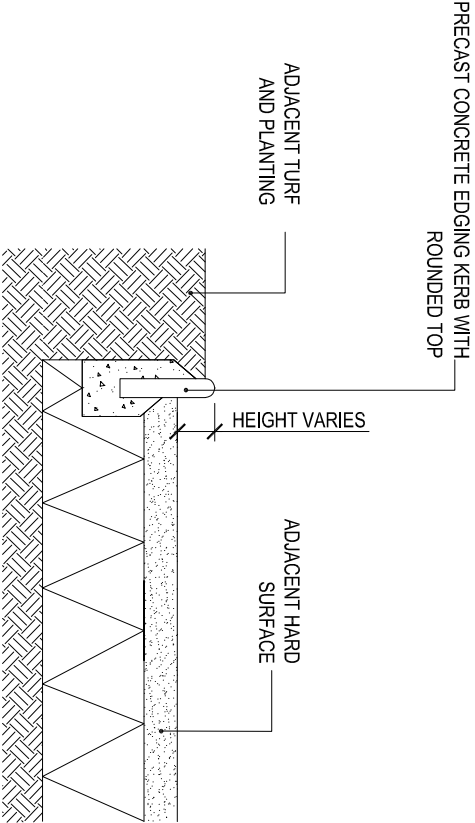


architecture  
graphics  
healthcare planning  
interior design  
landscape architecture  
regeneration  
town planning  
urban design  
3D visualisation

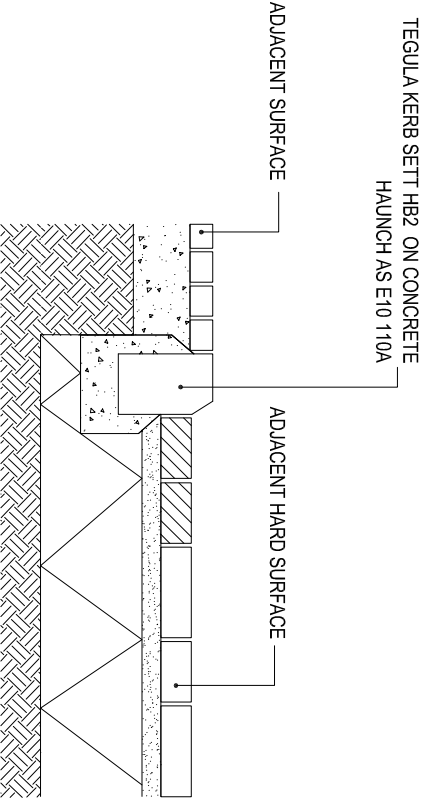
A. PRECAST CONCRETE FLUSH EDGING  
AS NBS Q10/113A



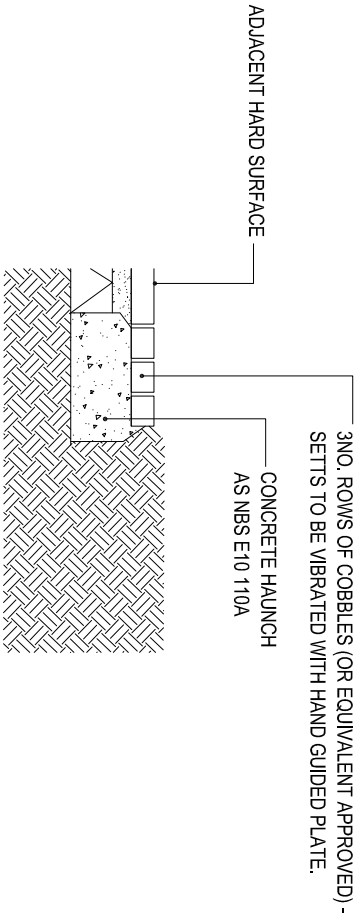
B. PRE CAST CONCRETE UPSTAND EDGING  
AS NBS Q10/113



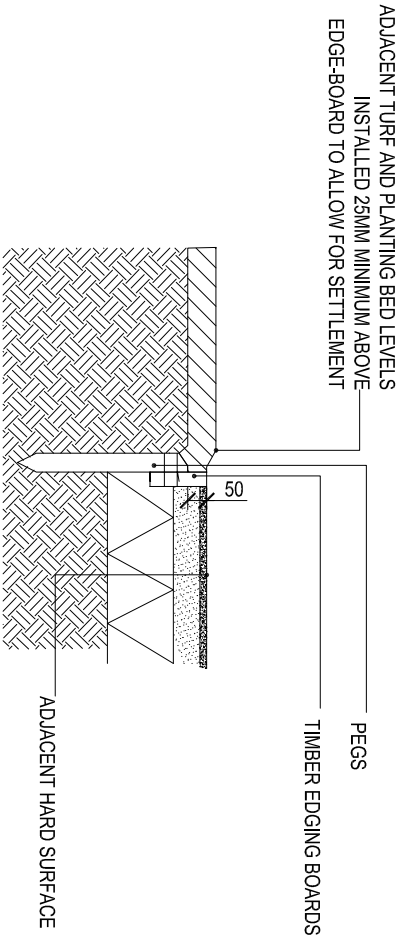
C. KERB-SETT EDGE  
AS NBS Q10/150



D. TEGULA COBBLE EDGE  
AS NBS Q10/150A



E. TIMBER EDGE  
AS NBS Q23/310A



- NOTES:
- 1) UNDER NO CIRCUMSTANCES SHOULD DIMENSIONS BE SCALED FROM THIS DRAWING IF IN DOUBT ASK
  - 2) THIS DRAWING IS TO BE READ IN CONJUNCTION WITH ALL OTHER RELEVANT DRAWINGS. ANY DISCREPANCIES, ERRORS OR OMISSIONS TO BE BROUGHT TO THE ATTENTION OF TAYLOR YOUNG.
  - 3) ALL DIMENSIONS TO BE CHECKED BEFORE COMMENCEMENT
  - 4) THIS DRAWING IS THE PROPERTY OF TAYLOR YOUNG AND MUST NOT BE COPIED OR REPRODUCED EITHER IN WHOLE OR IN PART WITHOUT WRITTEN PERMISSION

drawing originated by: DM	date: 27/06/12
revisions	drawn/reviewed
REV A	KR/DG
For planning submission.	31/07/12
REV B	JE/DM
Added note about tanking. For planning submission.	14/09/2012
REV C	KR/BR
Added references (A,B,C, etc) to details and re-ordered details on sheet. Amended NBS reference to detail A.	02/11/2012
REV D	JE/DM
Annotation amended and specification updated.	10/12/2012

FOR CONSTRUCTION

LIVERPOOL MUTUAL HOMES  
ENVIRONMENTALS

TYPICAL DETAILS - EDGINGS

Scale: 1:20 @A3  
Reviewed by : DG

job drawing rev  
5898 DT(90)02 D

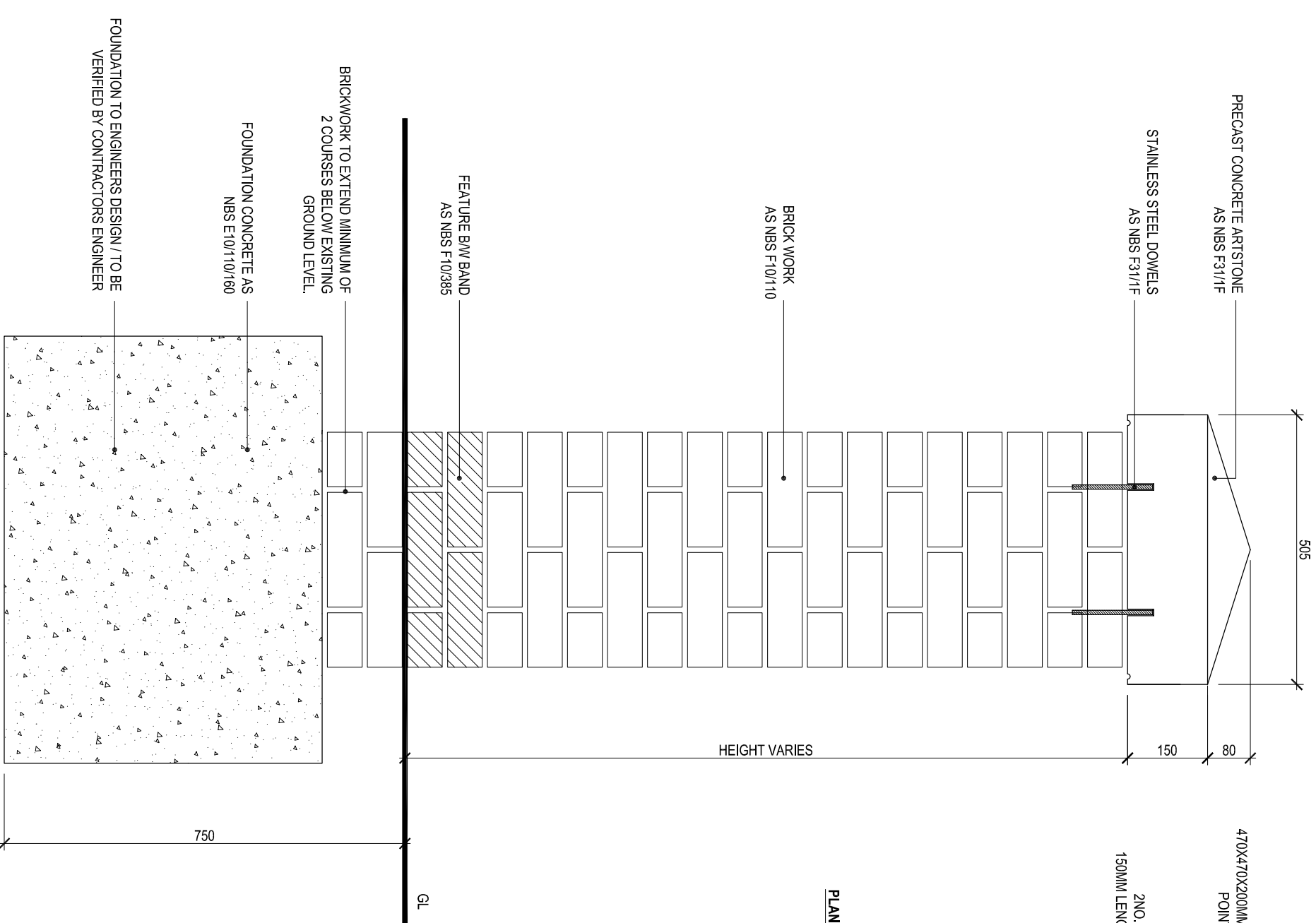
taylor young|ty

chadsworth house  
wilmslow road  
handforth  
cheshire  
sk9 3hp

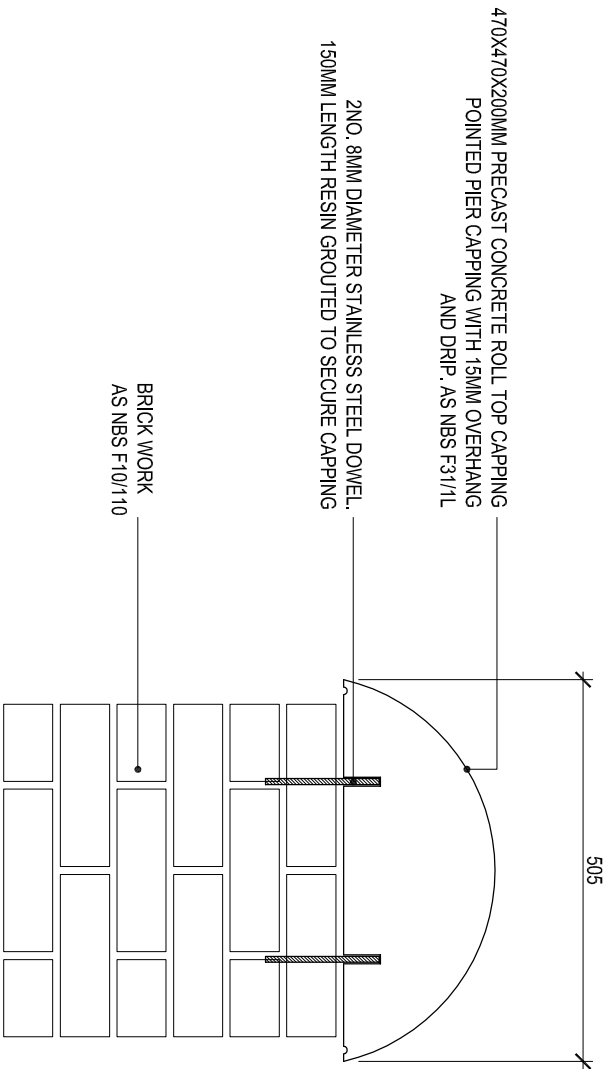
tel: 01625 542 200  
fax: 01625 542 250  
mail@tayloryoung.co.uk  
www.tayloryoung.co.uk



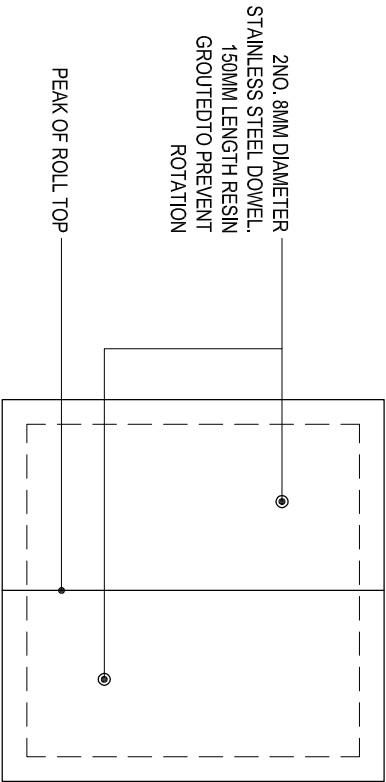
SECTION: 230MM HIGH POINTED ARTSTONE CAPPING TO BRICK PIER



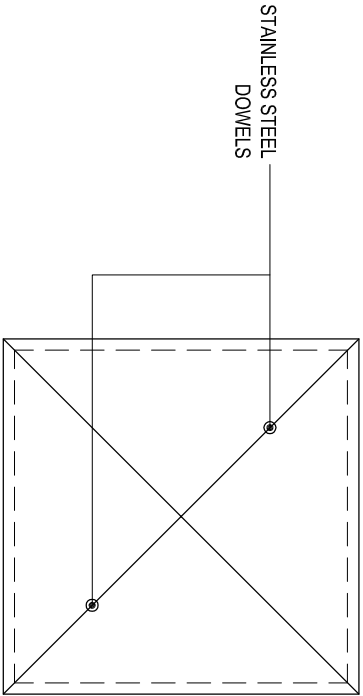
SECTION: 200MM HIGH ROLL TOP CAPPING TO BRICK PIER



PLAN: 200MM HIGH ROLL TOP CAPPING TO BRICK PIER



PLAN: 230MM HIGH POINTED ARTSTONE CAPPING TO BRICK PIER



NOTE:  
MAKE GOOD SURFACES EITHER SIDE / AROUND PIER COMPLETING TO MATCH, WELL COMPACTED BACK FILL AND MATCHING WEARING SURFACE.

NOTES:

1) UNDER NO CIRCUMSTANCES SHOULD DIMENSIONS BE SCALED FROM THIS DRAWING. IF IN DOUBT, ASK.

2) THIS DRAWING IS TO BE READ IN CONJUNCTION WITH ALL OTHER RELEVANT DRAWINGS. ANY DISCREPANCIES, ERRORS OR OMISSIONS TO BE BROUGHT TO THE ATTENTION OF TAYLOR YOUNG.

3) ALL DIMENSIONS TO BE CHECKED BEFORE COMMENCEMENT

4) THIS DRAWING IS THE PROPERTY OF TAYLOR YOUNG AND MUST NOT BE COPIED OR REPRODUCED EITHER IN WHOLE OR IN PART WITHOUT WRITTEN PERMISSION

drawing originated by: DM	date: 27/06/12
revisions	drawn/reviewed
REV A	KR/DG
Amended note to pier capping. For planning submission.	27/07/2012
REV B	DM/DMCK
200mm High Roll Top Capping detail added. Amended title and annotation to match landscape specification.	18/12/2012
REV C	DM/BR
Feature engineering brick courses amended	02/09/2014

FOR CONSTRUCTION

LIVERPOOL MUTUAL HOMES  
ENVIRONMENTALS

TYPICAL DETAILS - PIER CAPPINGS  
TO 440MM BRICK WALLS

Scale: 1:10@ A3  
Reviewed by : DG

job drawing rev  
5898 DT(90)07 C

taylor young|ty

chadsworth house  
willslow road  
handforth  
cheshire  
sk9 3hp

tel: 01625 542 200  
fax: 01625 542 250  
mail@tayloryoung.co.uk  
www.tayloryoung.co.uk

architecture

graphics

healthcare planning

interior design

landscape architecture

regeneration

town planning

urban design

3D visualisation



CHARTERED  
ARCHITECT  
REGISTERED  
STRUCTURAL  
ENGINEER

INCORPORATED  
IN THE UK



BS EN ISO 9001:2008



BS EN ISO 14001:2004

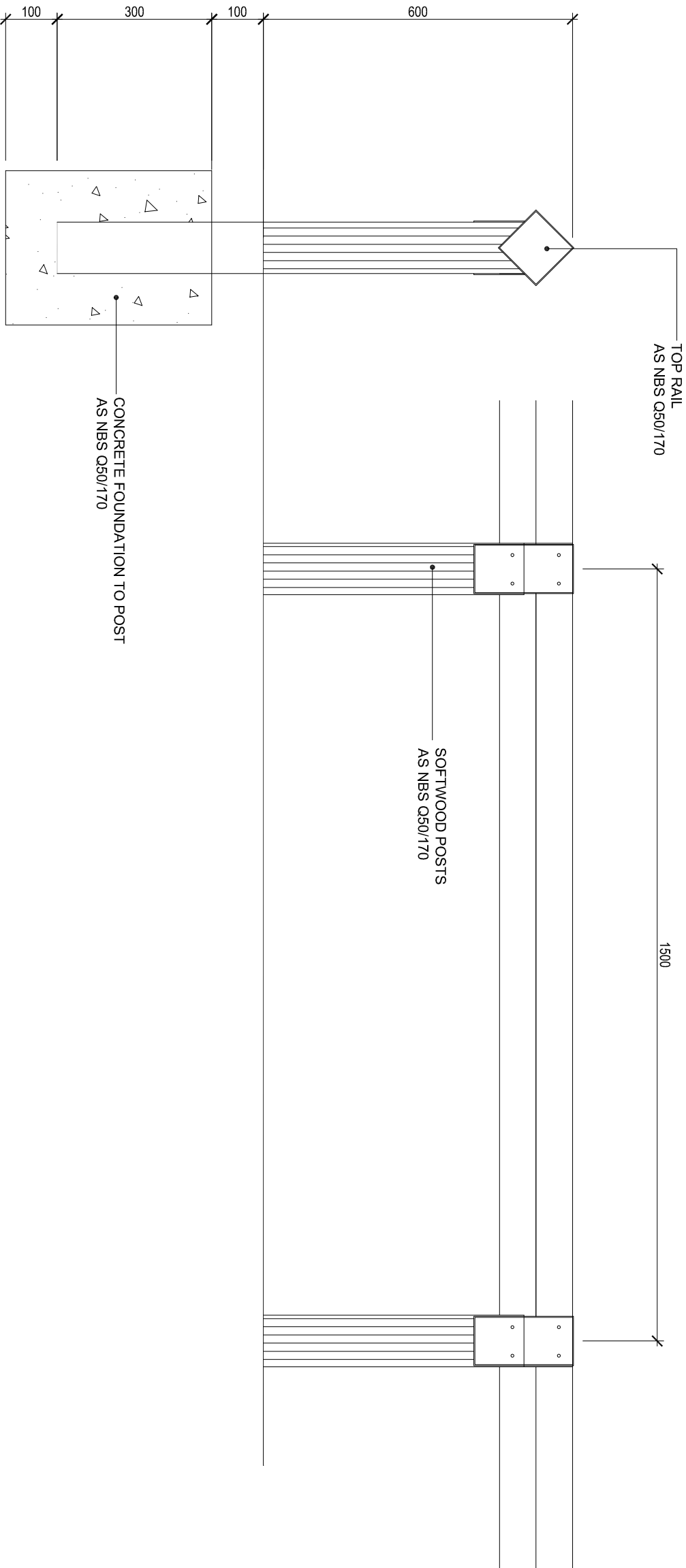


ISO 14001

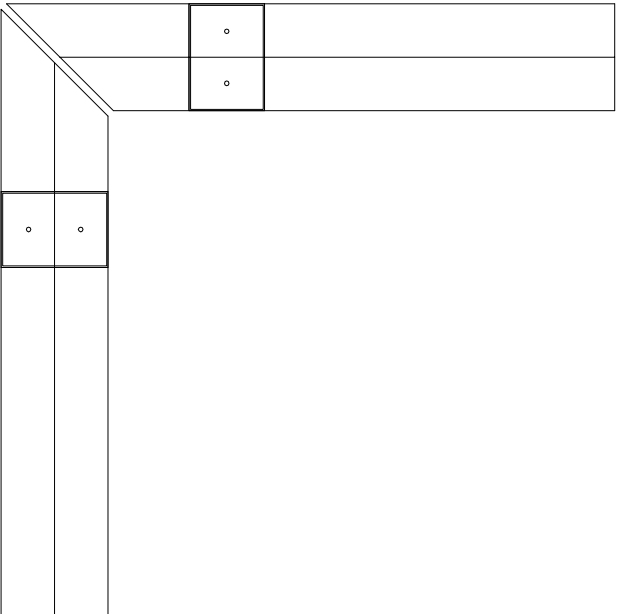
INVESTORS  
IN PEOPLE



600MM HEIGHT, TIMBER KNEE RAIL  
RAILING AS Q50/170



PLAN OF CORNER



- NOTES:
- 1) UNDER NO CIRCUMSTANCES SHOULD DIMENSIONS BE SCALED FROM THIS DRAWING. IF IN DOUBT, ASK
  - 2) THIS DRAWING IS TO BE READ IN CONJUNCTION WITH ALL OTHER RELEVANT DRAWINGS. ANY DISCREPANCIES, ERRORS OR OMISSIONS TO BE BROUGHT TO THE ATTENTION OF TAYLOR YOUNG.
  - 3) ALL DIMENSIONS TO BE CHECKED BEFORE COMMENCEMENT
  - 4) THIS DRAWING IS THE PROPERTY OF TAYLOR YOUNG AND MUST NOT BE COPIED OR REPRODUCED EITHER IN WHOLE OR IN PART WITHOUT WRITTEN PERMISSION

drawing originated by: DM		date: 27/06/12
revisions	drawn/checked	date
REV A	KR/DG	27/07/201
Timber rail extended and notes amended. For planning submission.		
REV B	JE/DM	14/09/201
Added title and NBS. For planning submission.		
REV C	JE/DM	14/12/201
Drawing updated to match Spec. Information from drawing (e.g. wood treatment) removed and added to Spec.		

FOR CONSTRUCTION

LIVERPOOL MUTUAL HOMES  
ENVIRONMENTALS

TYPICAL DETAILS - TIMBER KNEE RAIL

Scale: 1:10@A3  
Reviewed by : DG

job	drawing	rev
5898	DT(90)25	C

taylor young|ty

chadsworth house  
wilmslow road  
handforth  
cheshire  
sk9 3hp

tel: 01625 542 200  
fax: 01625 542 250  
mail@tayloryoung.co.uk  
www.tayloryoung.co.uk



BS EN ISO 9001:2008



BS EN ISO 14001:2004

ISO 9001:2008

ISO 14001:2004

INVESTORS  
IN PEOPLE

NOTES:

- 1) UNDER NO CIRCUMSTANCES SHOULD DIMENSIONS BE SCALED FROM THIS DRAWING. IF IN DOUBT, ASK
- 2) THIS DRAWING IS TO BE READ IN CONJUNCTION WITH ALL OTHER RELEVANT DRAWINGS. ANY DISCREPANCIES, ERRORS OR OMISSIONS TO BE BROUGHT TO THE ATTENTION OF TAYLOR YOUNG.

- 3) ALL DIMENSIONS TO BE CHECKED BEFORE COMMENCEMENT
- 4) THIS DRAWING IS THE PROPERTY OF TAYLOR YOUNG AND MUST NOT BE COPIED OR REPRODUCED EITHER IN WHOLE OR IN PART WITHOUT WRITTEN PERMISSION

drawing originated by: ESR	date: 03/07/12
revisions	drawn/reviewed
REV A	KR/DG
For planning submission.	31/07/12
REV B	JE/DM
Wall Type NBS added. For planning submission.	14/09/12
REV C	DM/DWck
Notes and annotations amended	02/02/13

FOR CONSTRUCTION

LIVERPOOL MUTUAL HOMES  
ENVIRONMENTALS

TYPICAL DETAILS - WALL TYPES

Scale: 1:20@A3  
Reviewed by : DG

job	drawing	rev
5898	DT(90)30	C

taylor young|ty

chadsworth house  
wilmslow road  
handforth  
cheshire  
sk9 3hp

tel: 01625 542 200  
fax: 01625 542 250  
mail@tayloryoung.co.uk  
www.tayloryoung.co.uk



BS EN ISO 9001:2004



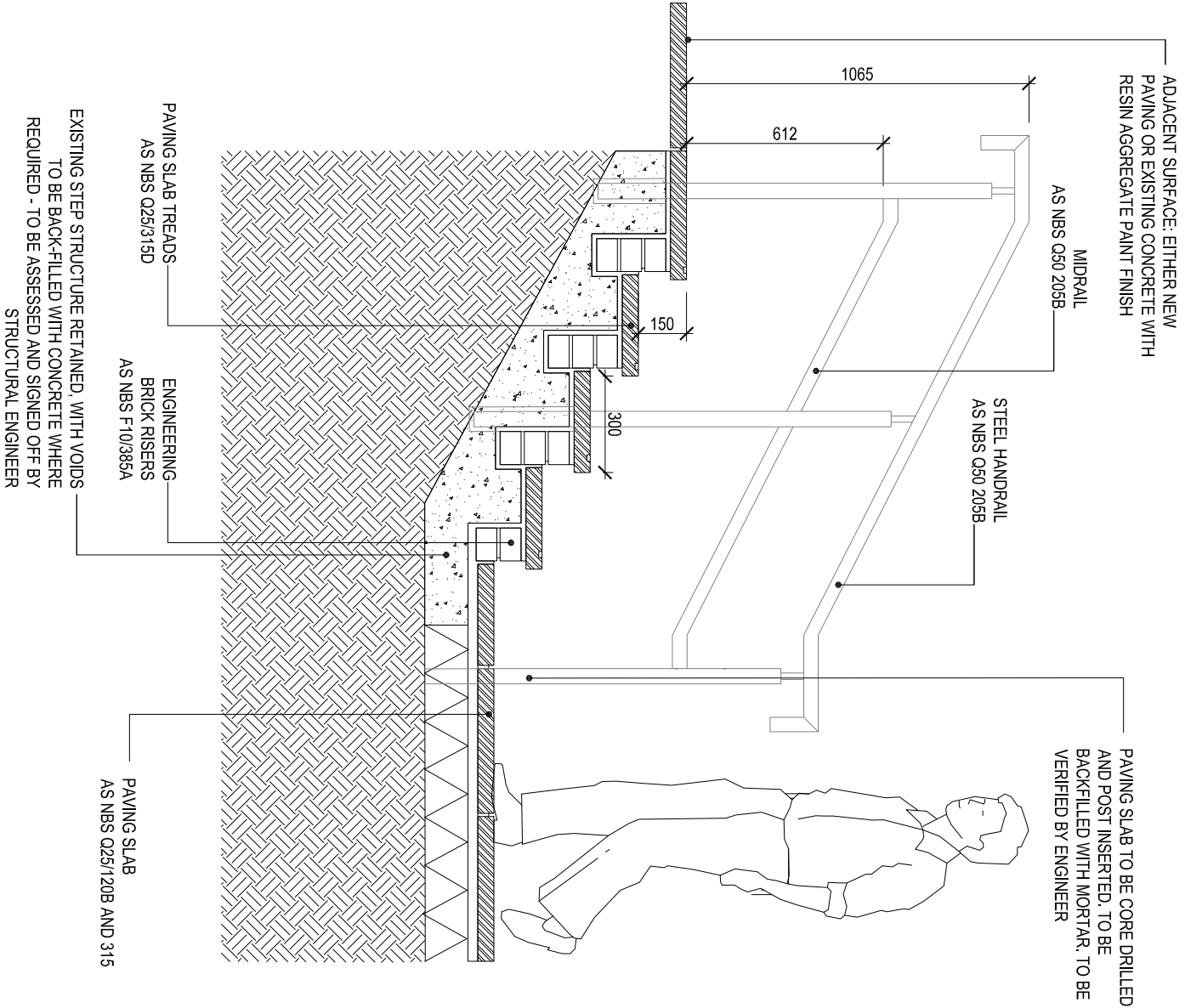
BS EN ISO 9001:2004

ISO 9001:2008

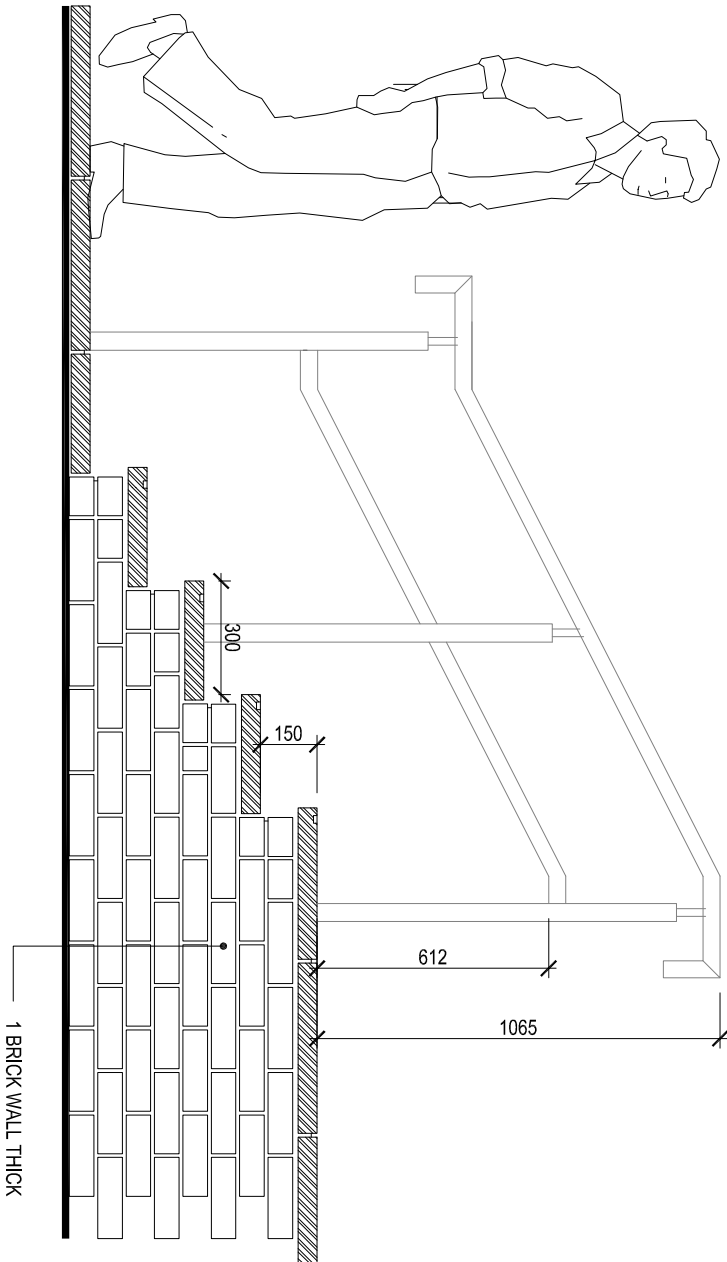
INVESTORS  
IN PEOPLE

3D visualisation

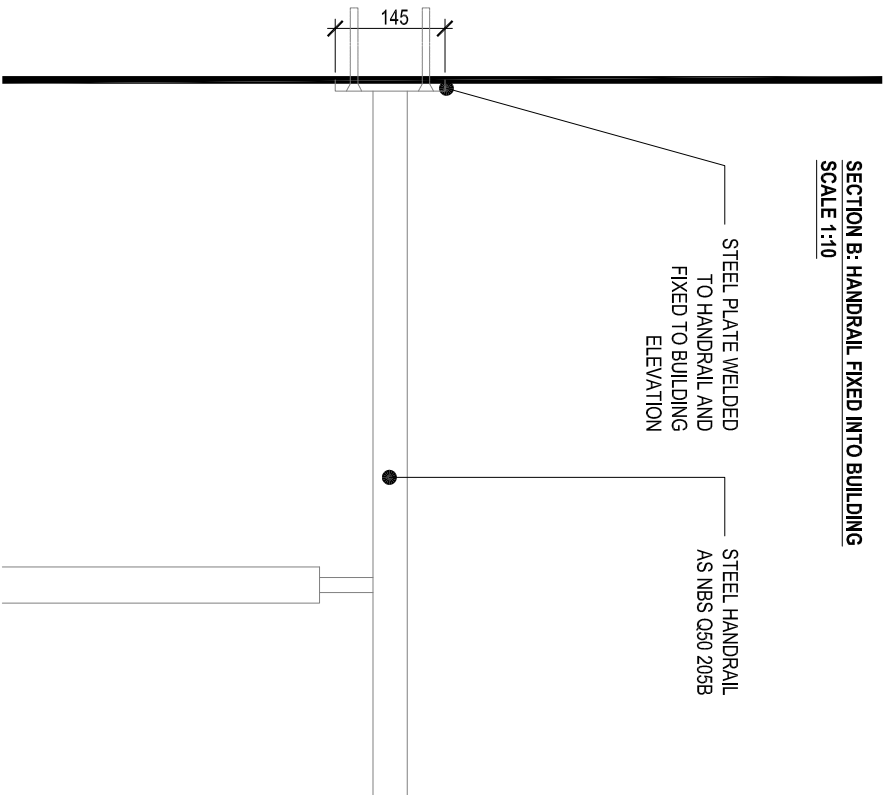
SECTION A: STEPS WITH BRICK PLINTH AND HANDRAIL  
SCALE 1:20



INDICATIVE ELEVATION: STEPS WITH BRICK RISERS AND HANDRAIL  
SCALE 1:20



SECTION B: HANDRAIL FIXED INTO BUILDING  
SCALE 1:10



- NOTES:
- 1) UNDER NO CIRCUMSTANCES SHOULD DIMENSIONS BE SCALED FROM THIS DRAWING 'IF IN DOUBT ASK'
  - 2) THIS DRAWING IS TO BE READ IN CONJUNCTION WITH ALL OTHER RELEVANT DRAWINGS. ANY DISCREPANCIES, ERRORS OR OMISSIONS TO BE BROUGHT TO THE ATTENTION OF TAYLOR YOUNG.
  - 3) ALL DIMENSIONS TO BE CHECKED BEFORE COMMENCEMENT
  - 4) THIS DRAWING IS THE PROPERTY OF TAYLOR YOUNG AND MUST NOT BE COPIED OR REPRODUCED EITHER IN WHOLE OR IN PART WITHOUT WRITTEN PERMISSION

drawing originated by: KR date: 18/07/13  
revisions drawn/reviewed date  
REV \_ \_ \_

CONSTRUCTION

LIVERPOOL MUTUAL HOMES  
ENVIRONMENTALS

TYPICAL DETAILS - STEPS WITH  
BRICK RISERS AND HANDRAIL TO  
BUILDING ENTRANCE

Scale: AS DRAWN @ A3  
Reviewed by : DM

job drawing rev  
5898 DT(90)45 -

taylor young|ty

chadsworth house  
wilmslow road  
handforth  
cheshire  
sk9 3hp

tel: 01625 542 200  
fax: 01625 542 250  
mail@tayloryoung.co.uk  
www.tayloryoung.co.uk

architecture  
graphics  
healthcare planning  
interior design  
landscape architecture  
regeneration  
town planning  
urban design  
3D visualisation



INCORPORATING



ENIS 77584 7854

BS ENISO 9001:2004



ISO 9001:2008

INVESTORS  
IN PEOPLE