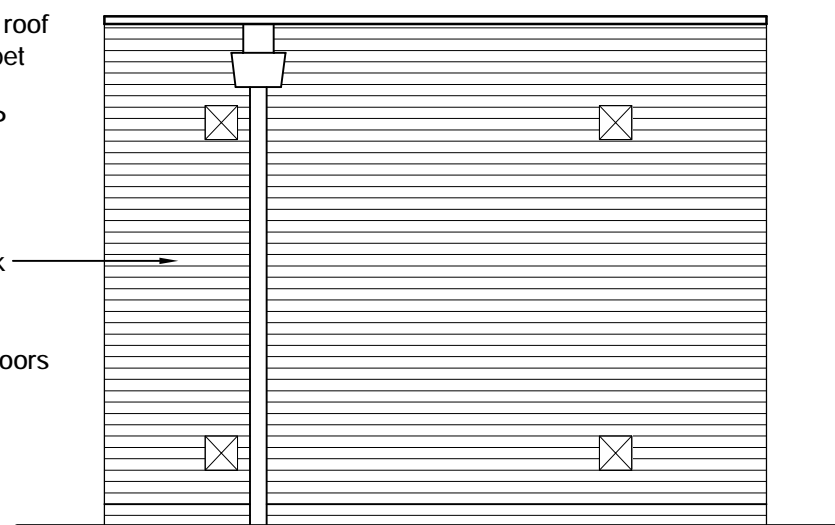
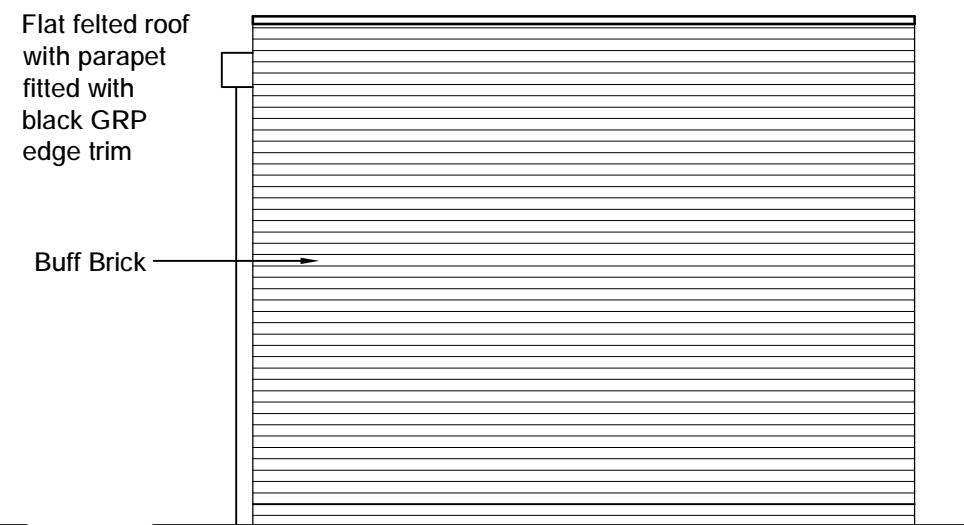


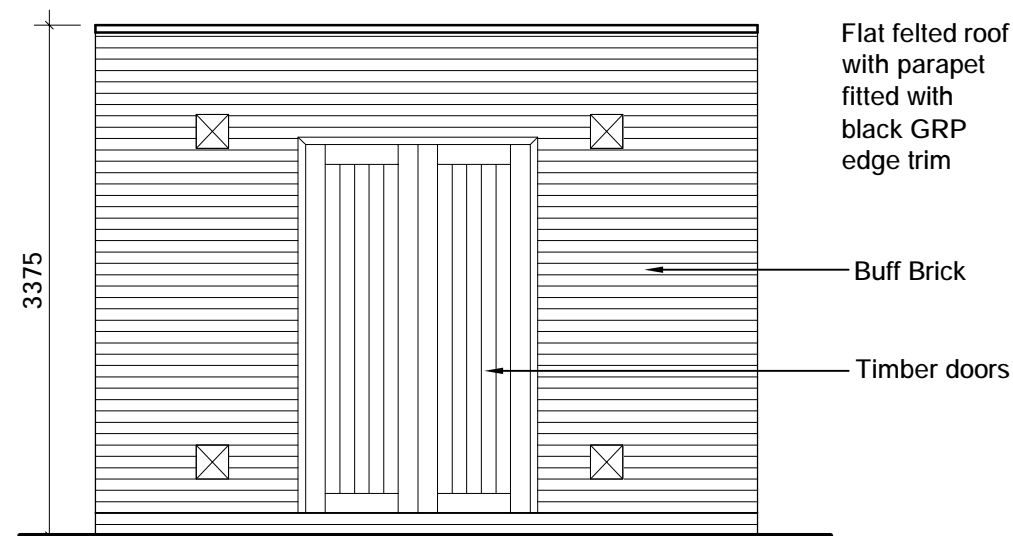
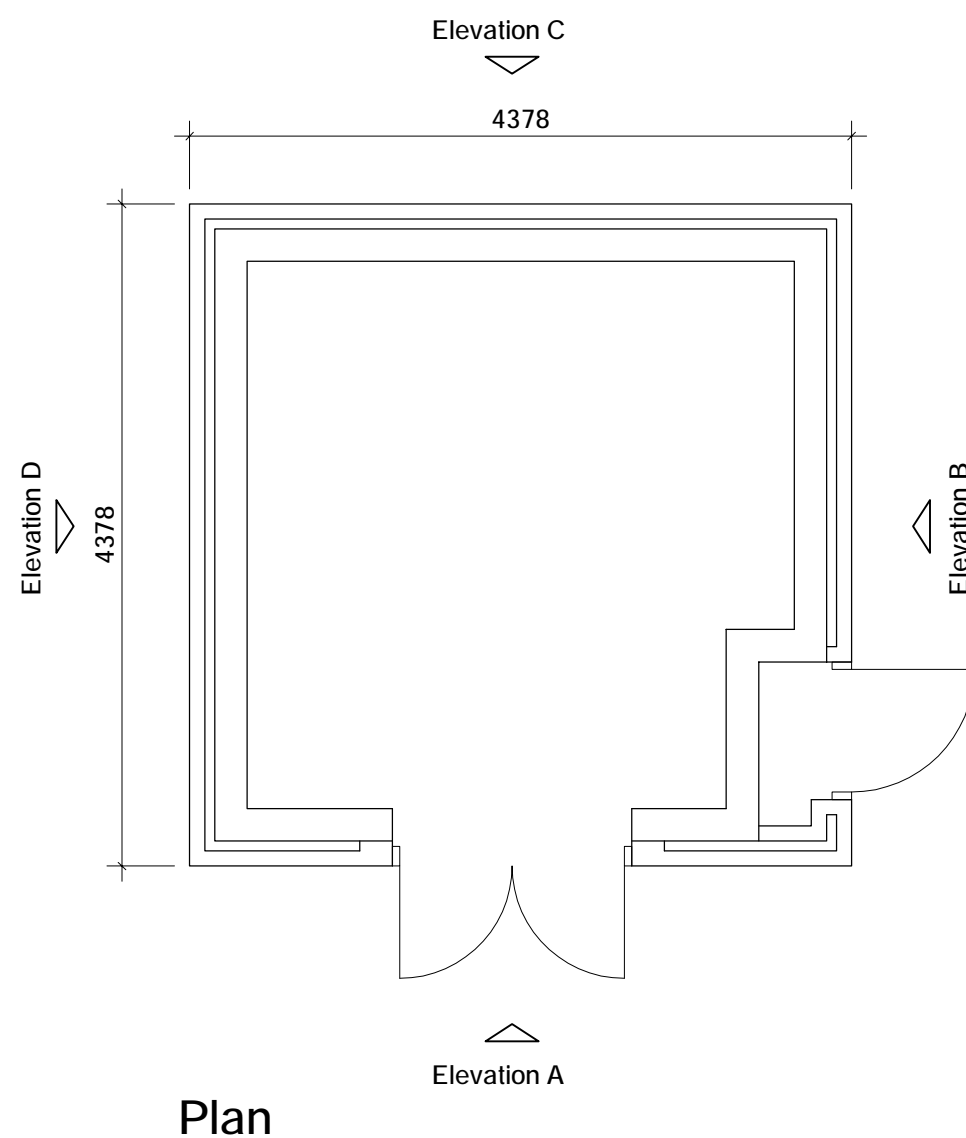
Elevation B



Elevation C



Elevation D



Elevation A

no.	date	revision	by
-----	------	----------	----



aja architects llp
1170 Elliott Court
Herald Avenue
Coventry Business Park
COVENTRY CV5 6UB
E: aja@aja-architects.com
W: www.aja-architects.com

aja architects llp is a limited liability partnership registered in England No. OC334721

client

T J Morris

project

Balance of G Park
Liverpool

drawing

Proposed Sub Station

scale 1:50 @ A3 drawn KS

checked JP date August 2015

no

5583 - 132
PLANNING