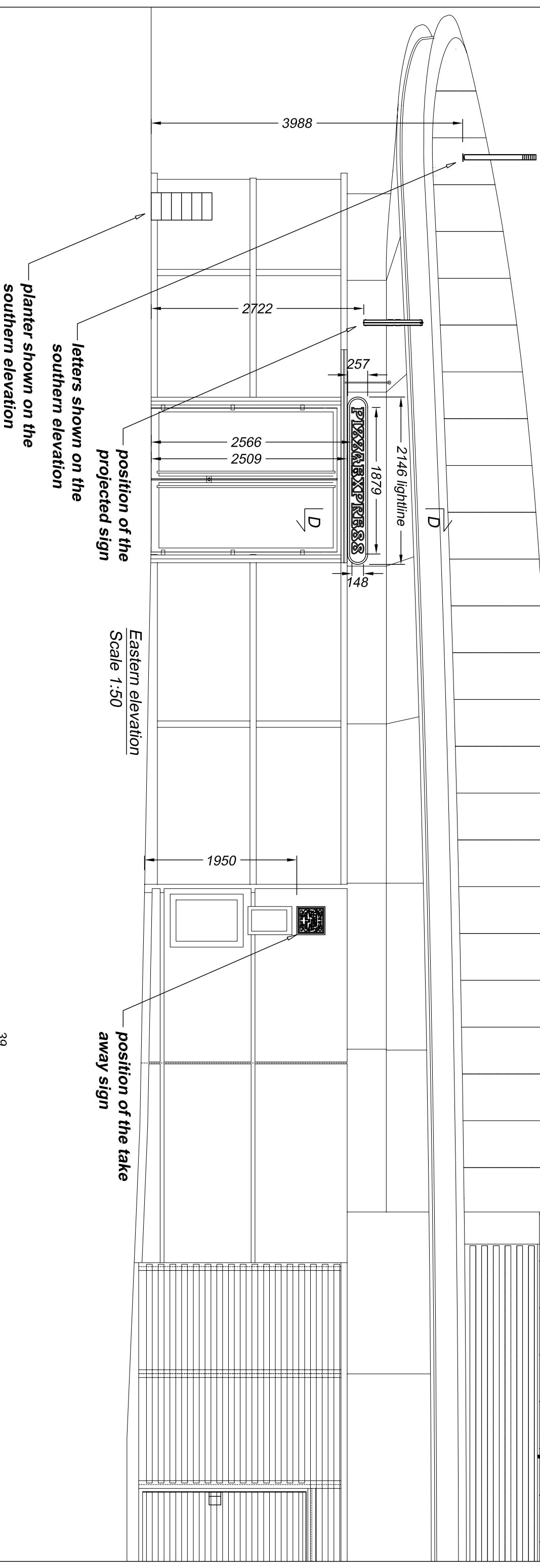


Proposed



Section D-D through text and orbiting lightline

Scale 1:5

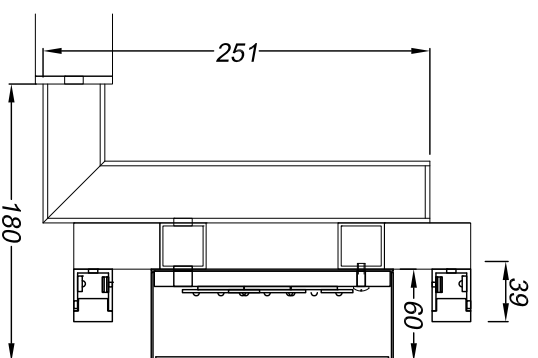
Built-up letters have 1.2mm descaled stainless steel returns, backs and face rims which are finished black. Faces to be push through 5mm opal 050 acrylic. Backs with 10mm white foamex fitted with low energy white LEDs for face illumination.

Lightlines are 2.5mm aluminium channels finished black and fitted with rebated 15mm opal 030 acrylic faces.

Low energy blue LEDs for face illumination.

Curved lightlines form an oblong shape around the text.

Text and lightlines fix to the existing frame above the door.



Projected Sign - 1 off

Scale 1:10

Manufactured from 1.2mm descaled stainless steel face rims and returns finished satin black.

Rims hold 6mm toughened glass faces which are backed by a black and white vinyl print which is translucent for the white logo graphics.

8mm blue acrylic ring for live edge blue illumination effect.

Inner roundel and bracket from mild steel.

Shroud from 0.9mm descaled stainless

steel also finished satin black.

Internally illuminated via low energy white

LEDs.

