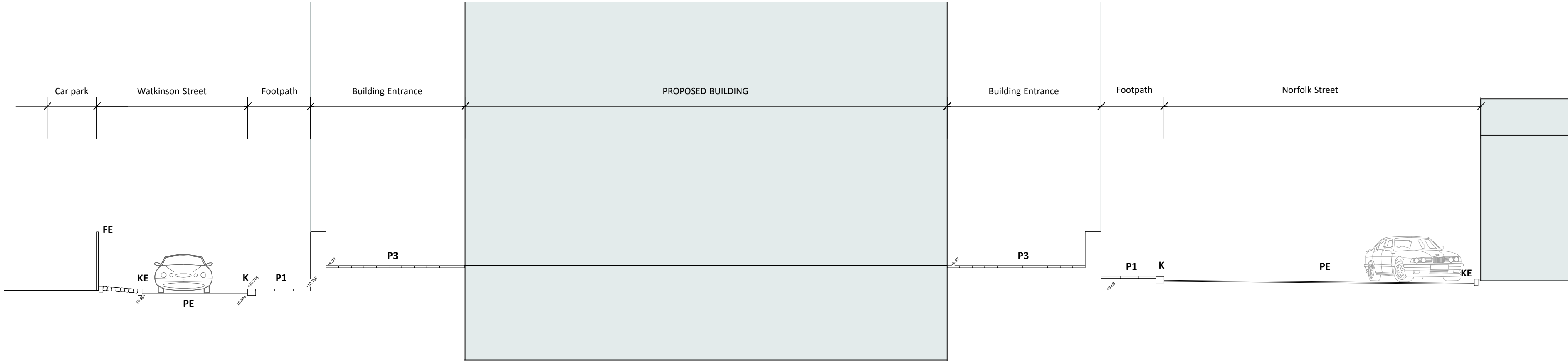
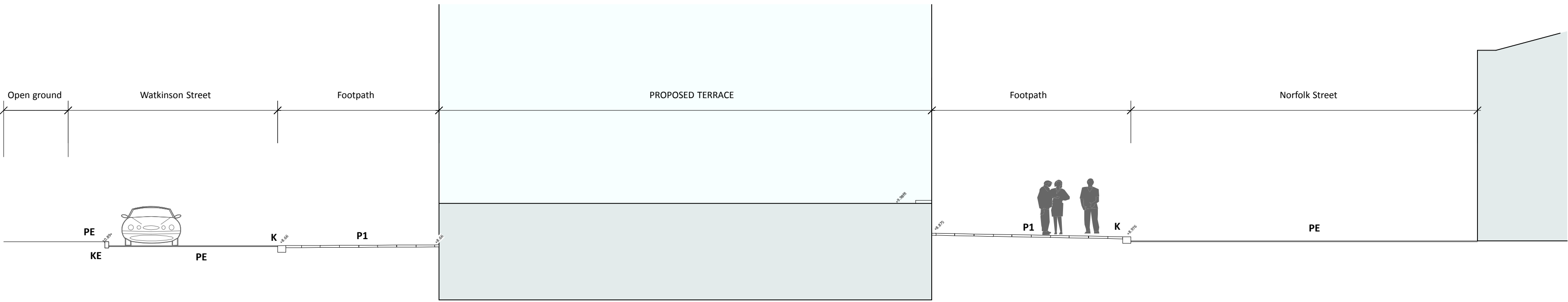


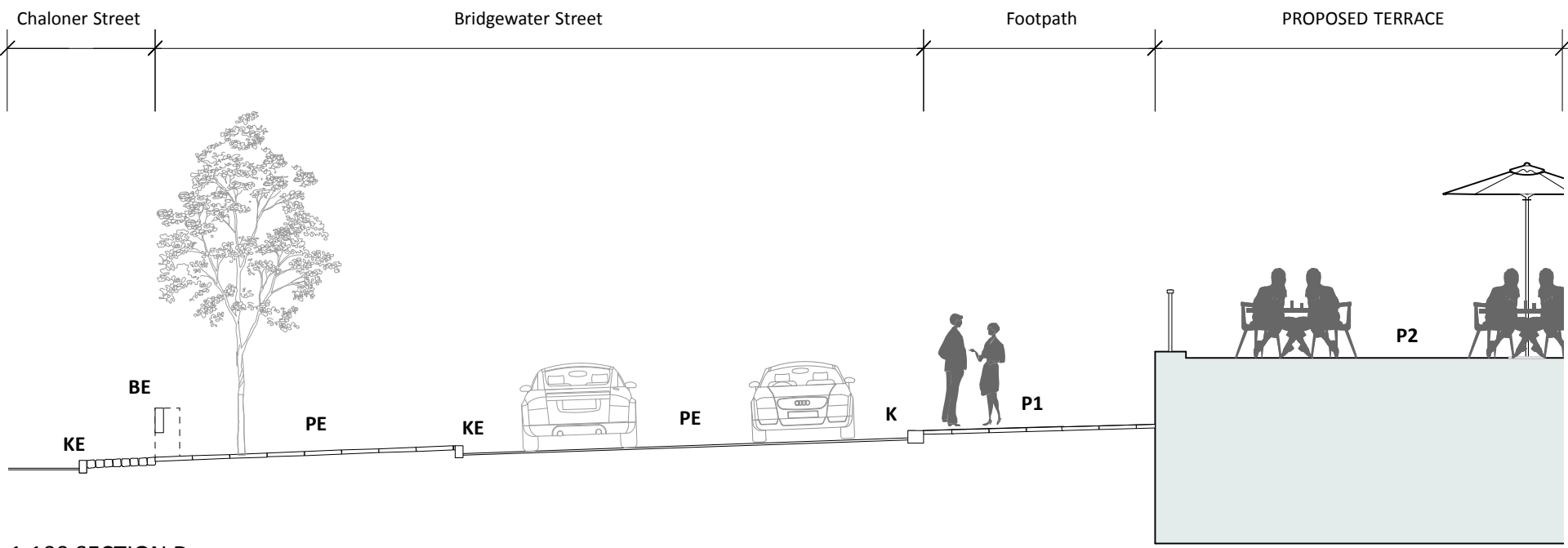
1:100 SECTION A



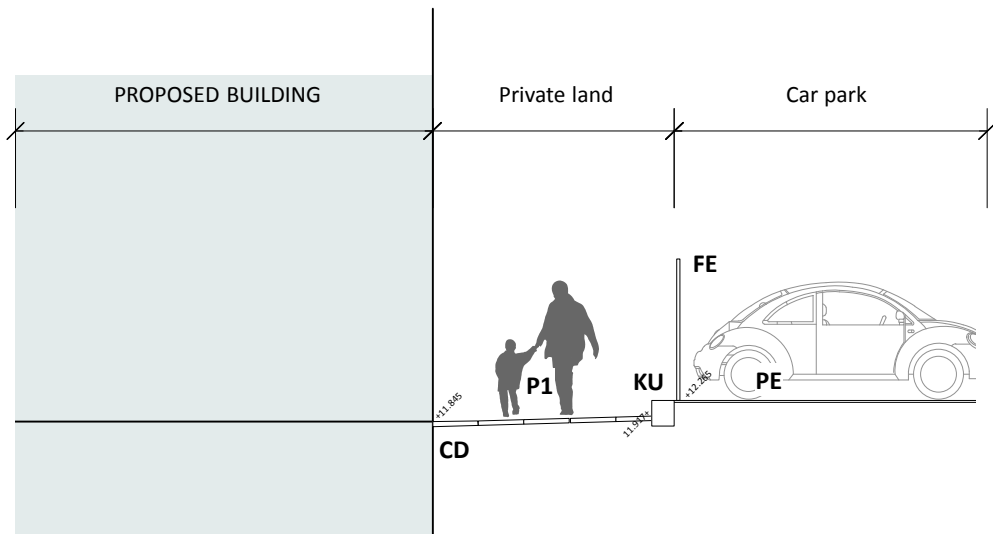
1:100 SECTION B



1:100 SECTION C



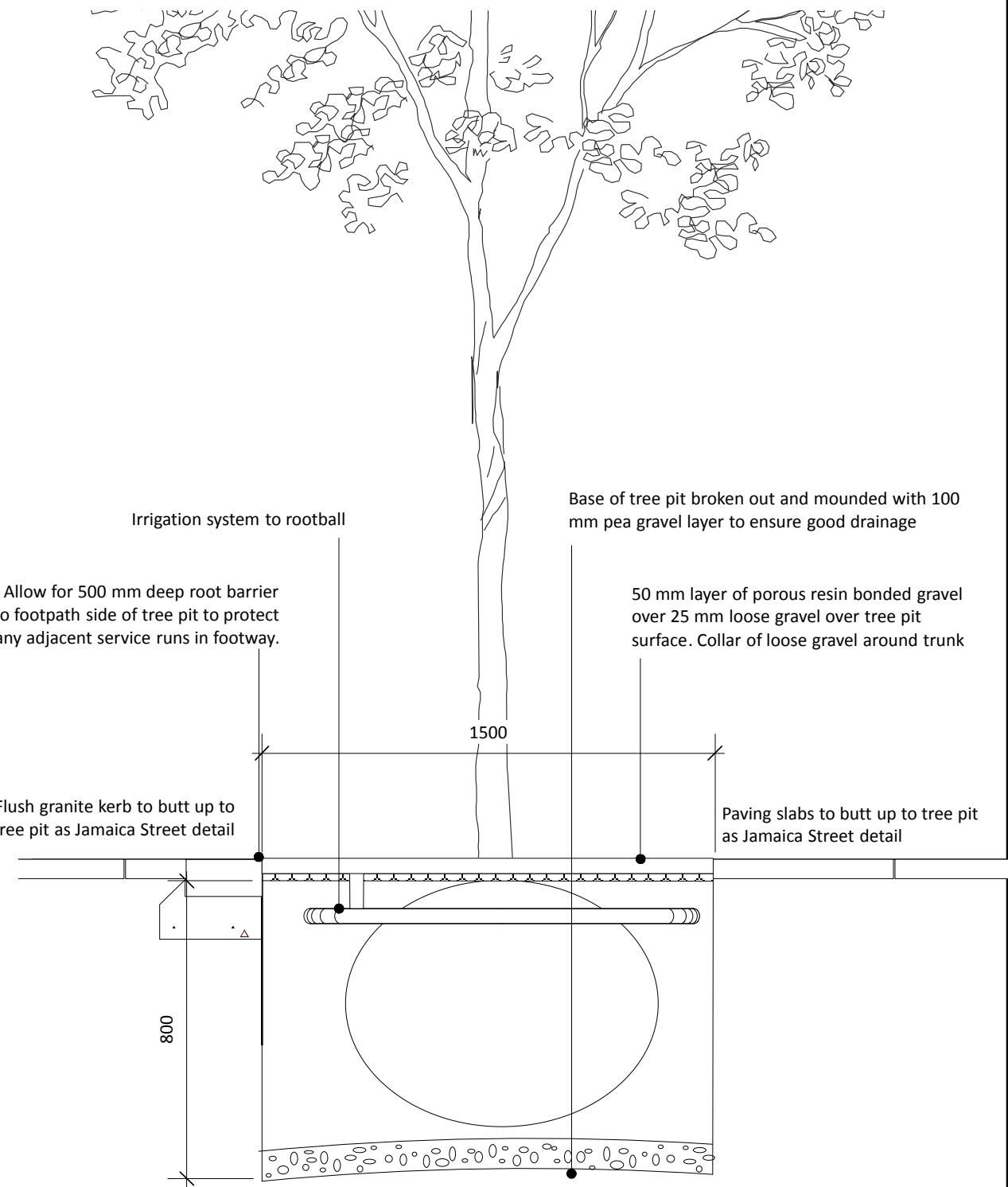
1:100 SECTION D



1:100 SECTION E

KEY

- P1 Standard precast concrete paving slabs 600 x 450 mm to match those on Jamaica Street. Laid perpendicular to building frontage.
- P2 Ecodeck surfacing to terrace
- P3 Blister tactile paving
- PE Existing paving/carriageway retained
- K Silver grey 300 mm wide granite kerb to carriageway to match those used on Jamaica Street laid with 125 mm upstand. Flush kerb at corner for crossing Norfolk and Watkinson Streets
- KF Silver grey 300 mm wide granite kerb laid flush with concrete slab paving. Granite to match that used for kerbs
- KU Silver grey 300 mm wide granite retaining upstand. Going from flush at Norfolk St to approx 350 mm high at Watkinson St.
- KE Existing concrete road kerb retained
- CD Channel drain close to building thresholds
- FE Existing fencing retained
- TP Existing fencing retained



© All information contained within this document remains copyright of Landscape Projects Ltd. and shall not be reproduced without prior consent.  
(1) Do not scale from drawings - use written dimensions only. (2) All dimensions are in millimeters unless noted. (3) All dimensions shall be verified on site before proceeding with the work. (4) Landscape Projects shall be notified of any discrepancies. (5) Engineer to specify all sub-bases. Any below ground construction is indicative.

Landscape Architecture & Design

31 Blackfriars Road Salford Manchester M3 7AQ  
PHONE: 0161 839 8336 FAX: 0161 839 7155  
EMAIL: post@landscapeprojects.co.uk

Project Title  
Norfolk Street 3  
(Chaloner Street), Liverpool

Drawn Date  
2015-10-08  
Scale  
varies @ A1

Drawn  
RD  
Status  
Planning

Checked  
NS

Drawing Title  
Landscape Sections  
Ground Floor

Drawing No.  
463.200

Revision  
-