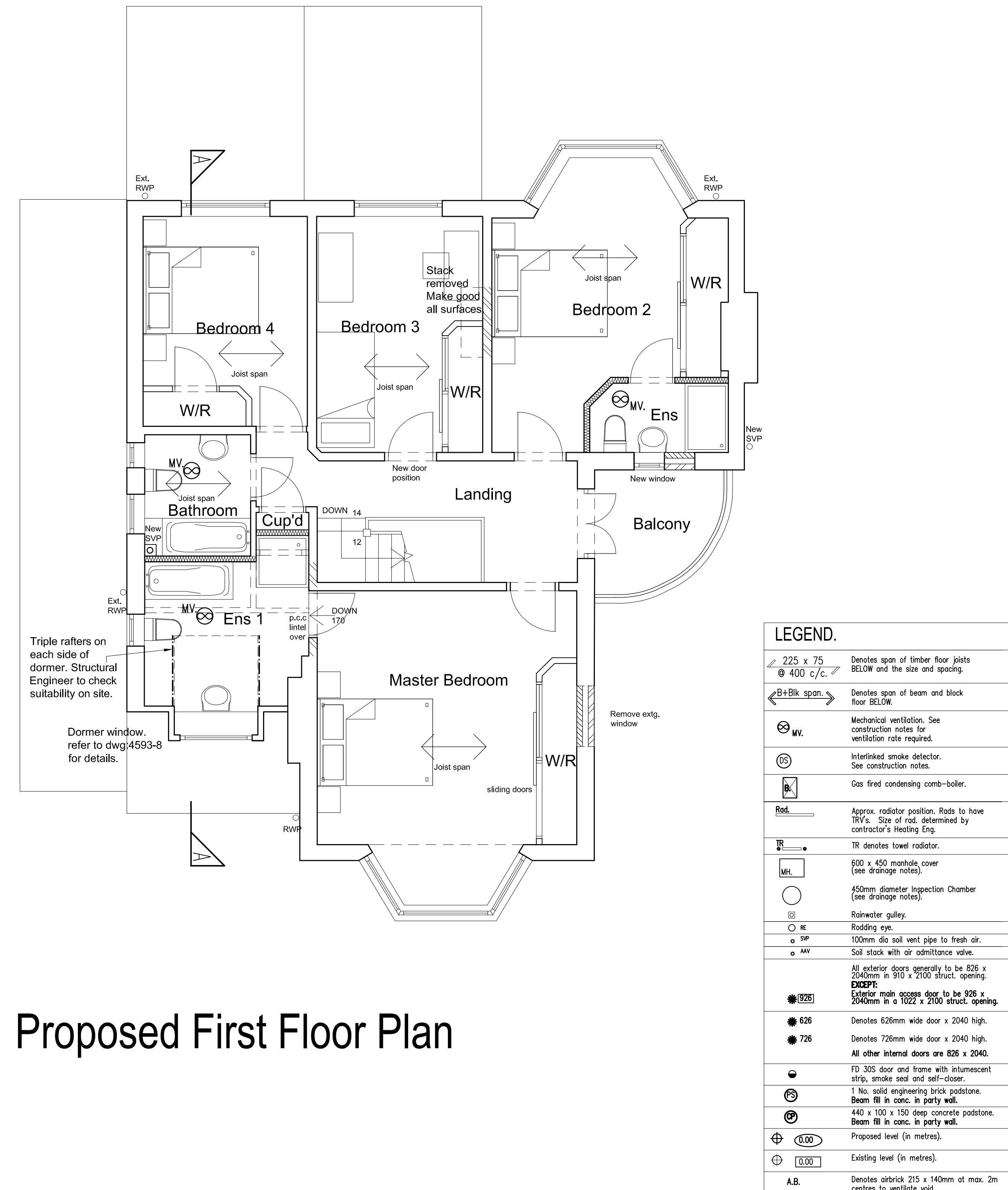


Proposed Ground Floor Plan



Proposed First Floor Plan

Copyright: This drawing is the property of K & J. Woodward Ltd and no information carrying on reproduced without their permission.

Rev.	Date.	<div>K. & J. WOODWARD</div> <div>Chartered Architects</div> <div>P.O. Box 82, Liverpool, L19 0WD.</div> <div>Tel. 0151 724 1790 Fax. 0151 494 1684</div>			
A.	07.01.12		Additional notes added, Structural Information added.		
B.	23.02.12		Additional notes added, Structural Information added.		
		<div>Project.</div> <div>No. 3 Blackwood Avenue</div> <div>Woolton</div> <div>Liverpool</div> <div>L25 4RN</div>			
		<div>Drg Title.</div> <div>PROPOSED PLANS</div>			
		<div>Date.</div> <div>10/11.</div>	<div>Scale.</div> <div>1:50 @ A1</div>	<div>Drg No.</div> <div>4593/6</div>	<div>Rev.</div> <div>B.</div>

O. S. Crown Copyright. All rights reserved. Licence Number 100020449

Site plans are produced from a combination of O.S. digital Superplan data and either topographical or measured survey. Care should be taken when measuring from one system to another. O.S. information is for guidance only.

Whilst reasonable care is taken in the preparation of these details and descriptions they are for guidance only. Local requirements may cause details to be varied. All dimensions are approximate and should be checked from site.

These details do not constitute any part of an offer or contract.

On no account may this drawing be scaled.
Any discrepancy in the figured dimensions is to be reported immediately.
Contractors must check all dimensions from site.