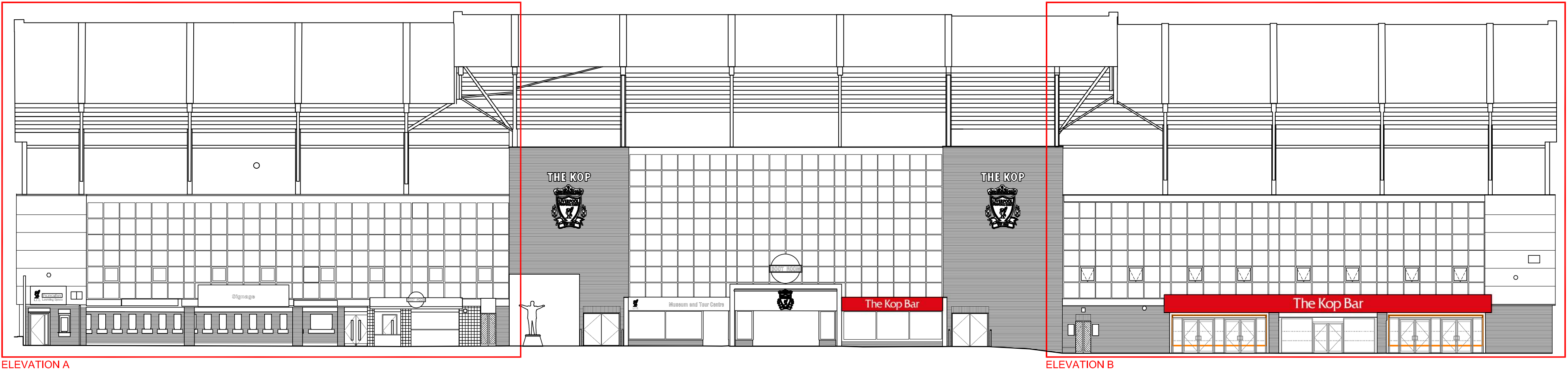


revision	date	description	sg	checked
P1	08.02.18	FOR PLANNING	RG	SG



ELEVATION A

ELEVATION B

Datum 52.00m

KOP STAND ELEVATION
SCALE 1:200 @A1
1:50 @A3

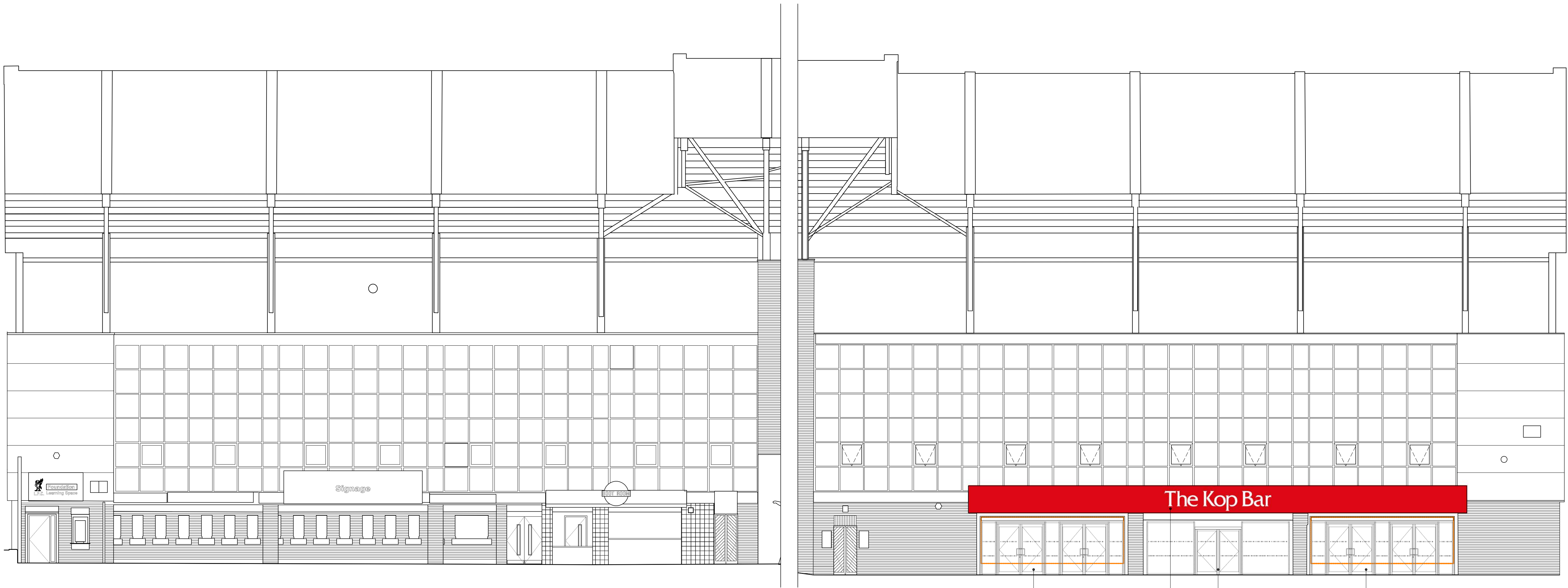


LEGEND

DEMOLISHED / REMOVED
STRUCTURE & DOORS

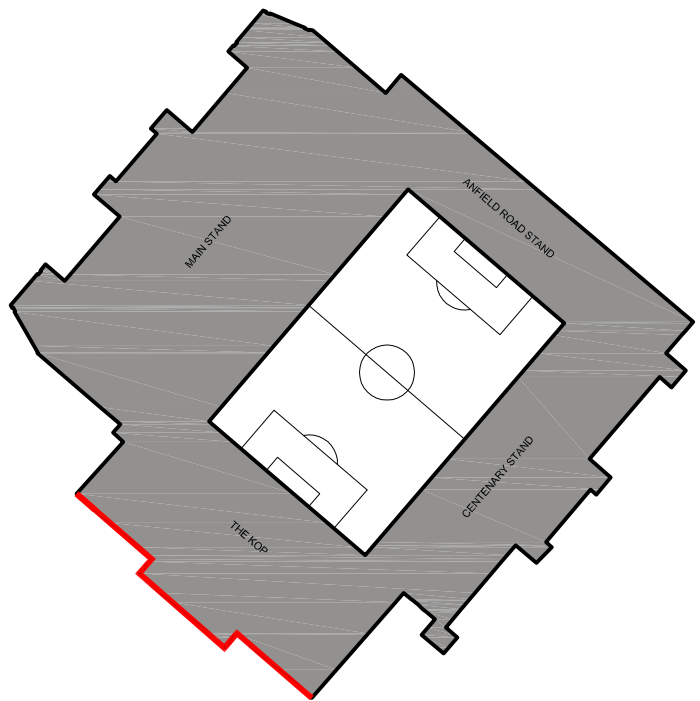
NOTES

- ① AMEND FACADE TO PROVIDE NEW OUTWARD SWINGING GLASS DOUBLE DOOR WITH GLAZED PANELS TO EACH SIDE, ROLLER SHUTTERS TO BE RETAINED
- ② EXISTING GLAZED AUTOMATIC DOUBLE DOOR TO BE RETAINED INCLUDING ADJACENT GLAZING.
- ③ AMENDED SIGNAGE ABOVE DOORS



Datum 52.00m
DETAIL ELEVATION A
SCALE 1:100 @A1
1:25 @A3

DETAIL ELEVATION B
SCALE 1:100 @A1
1:25 @A3



PLANNING ISSUE
contract
ANFIELD STADIUM
ANFIELD ROAD, LIVERPOOL
drawing
KOP STAND
PROPOSED SOUTH ELEVATIONS



KKA ARCHITECTURE HIGHPOINT HIGHFIELD STREET LIVERPOOL L3 6AA
0151 238 3186 ARCHITECTS@KKAARCHITECTURE.CO.UK WWW.KKAARCHITECTURE.CO.UK

drawn	RG	checked	SG	approved	TS
scale	1:200 @A1	date	FEB 18	cad file	4367.L04
job no.	4367	dwg no.	L04	revision	P1