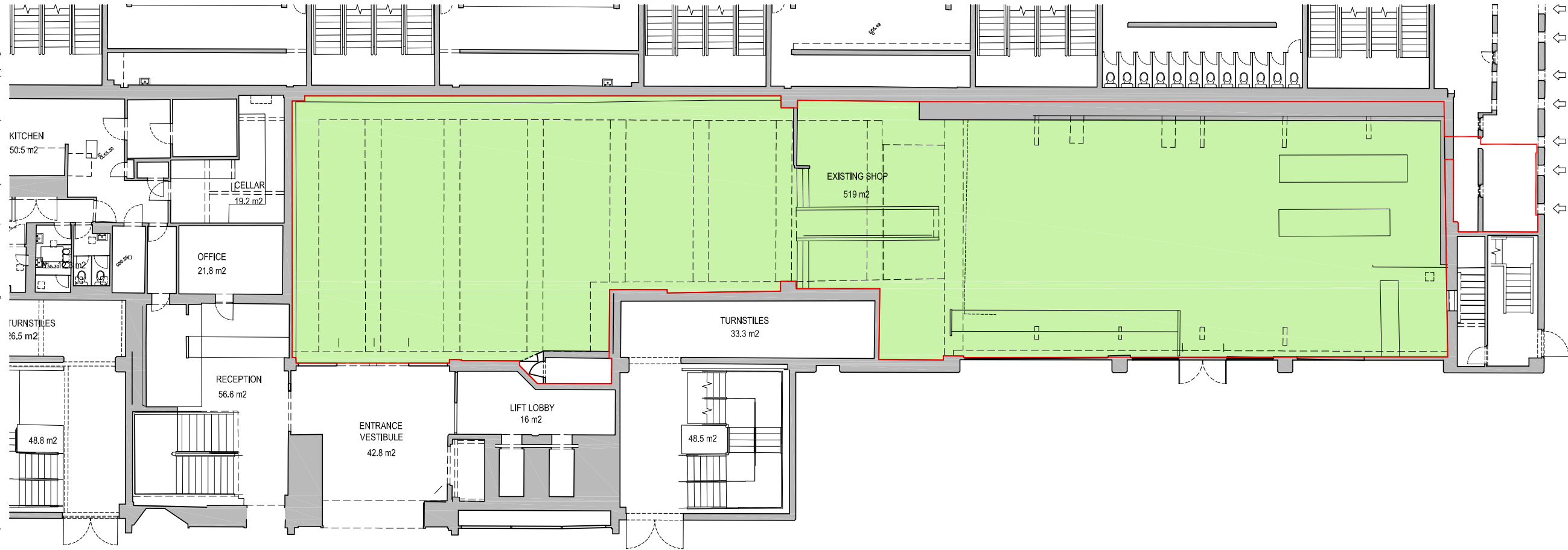
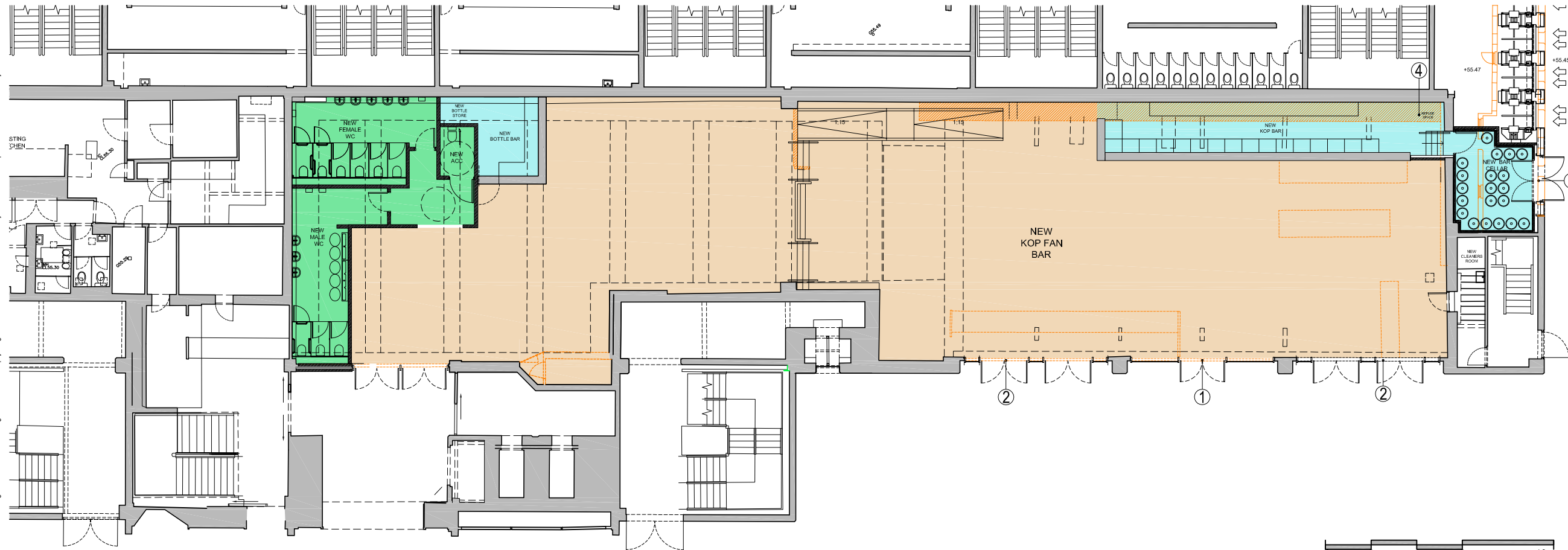


©KKA2017 This design and drawing is the copyright of KKA Ltd and may not be reproduced in any form whatsoever without prior written consent. Issue of the drawing does not impart any real or implied copyright licence



EXISTING PLAN



PROPOSED PLAN

This drawing must be read in conjunction with all architects, consultants, subcontractors and specialists drawings.

Rev.	Date	Description	Sig.
P1	08.02.18	PLANNING	RG

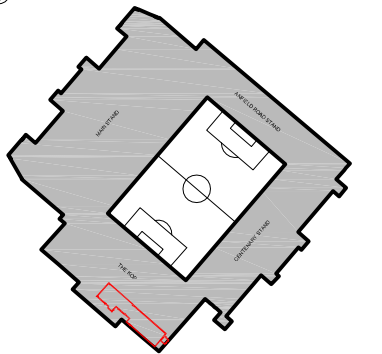
LEGEND

- DEMOLISHED/REMOVED WALLS, DOORS, FITTINGS
- NEW WALLS & STRUCTURE
- EXTENT OF KOP BAR, INCLUDING WCs & CELLAR

NOTES

L00

- EXISTING CENTRAL GLAZED AUTOMATIC DOUBLE DOORS RETAINED, INCLUDING ADJACENT GLAZING.
- FACADE AMENDED TO PROVIDE 4 NO. NEW OUTWARD SWINGING GLASS DOUBLE DOORS. RETAIN ROLLER SHUTTERS. REFER TO L03 - L05 FOR DETAIL SIZE & POSITION
- NEW VENT GRILLE ABOVE EXTERNAL DOUBLE DOORS. REFER TO L05 FOR POSITION & SIZE.
- BAR WASTE AREA; PROVISION FOR REFUSE / BINS



PLANNING ISSUE  
ANFIELD STADIUM  
ANFIELD ROAD, LIVERPOOL  
KOP FAN BAR PLANS  
4367 L02 P1  
SCALE 1:200

