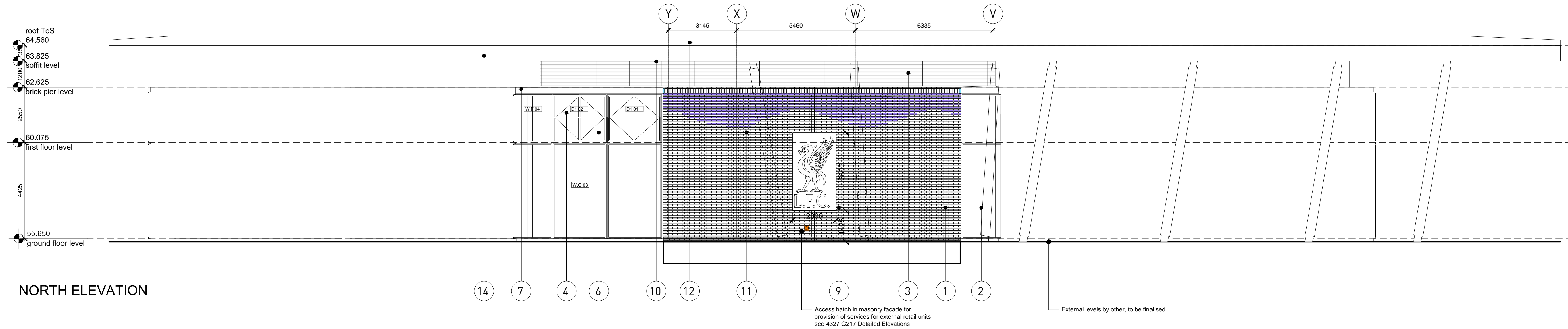
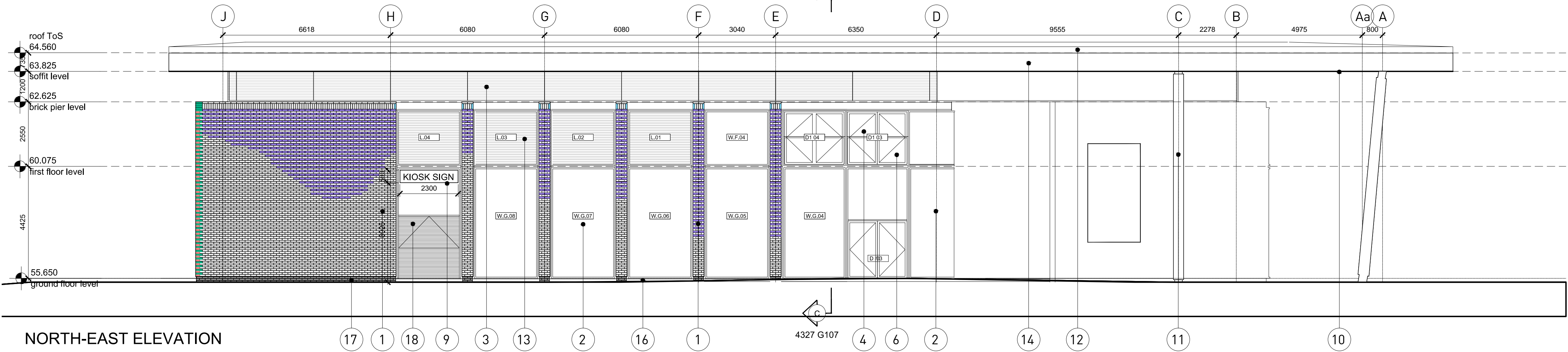
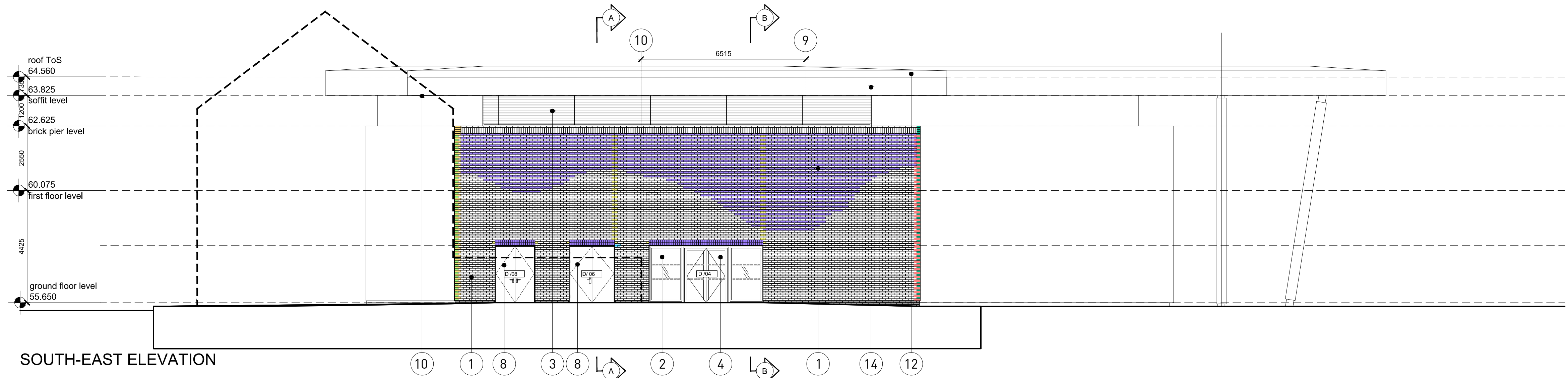


revision	date	description	sig.	checked
P1	30.03.17	revised kiosk sign location as per employer request	JM	
P2	04.04.17	sign dimensions	JM	



SKETCH ISSUE

KEY TO MATERIALS

- Red facing masonry - see 4327 G217 for brick types
- Double glazed polyester powder coated aluminium curtain walling with silicon vertical corner joints, dark grey RAL 7012. See 4327 G219 for curtain walling
- 16mm Multicell Danpalon 600 (colour red)
- Double glazed powder coated aluminium french doors, dark grey RAL 7012
- Bronze Metallic Anodised Aluminium 4327 G215 Entrance Enclosure

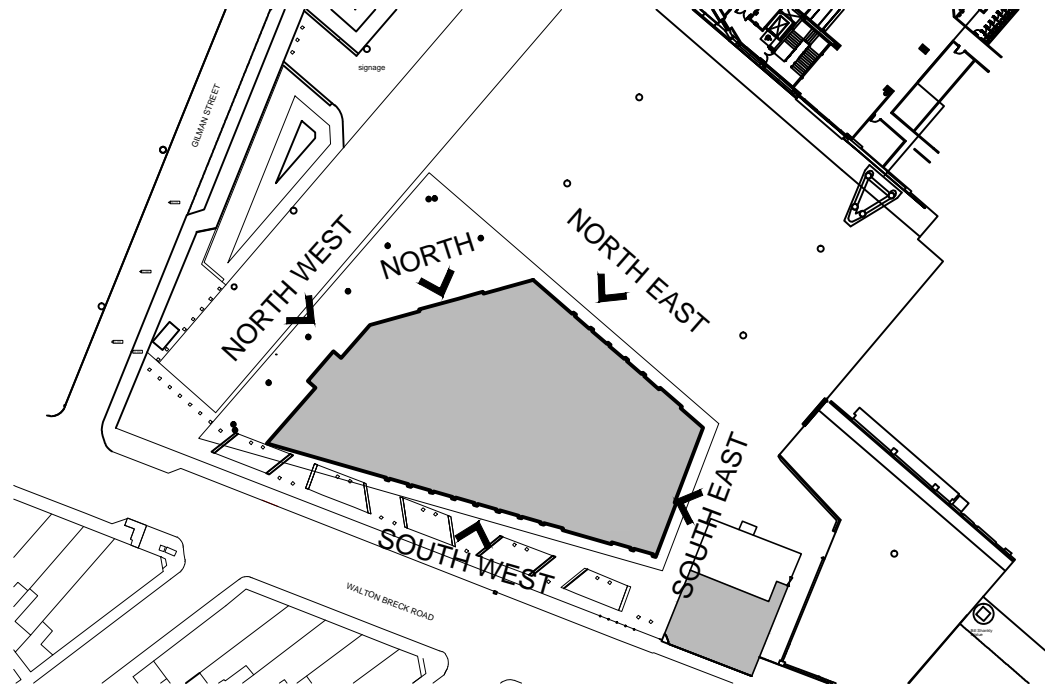
- Toughened glass balustrade, steel square section handrail, painted in RAL 7012
- Powder coated pre-formed channel, painted in RAL 7012
- Steel framed door RAL 7012
- Signage to adhere to existing branding strategy. Client direct item. Refer to notes
- Western red cedar soffit panel

- Steel columns, clad with GRP circular profile painted RAL 7012
- Membrane roofing, colour lead gray
- Aluminium single bank louvres, set within curtain walling framing, polyester powder coated RAL 7012
- Polyester powder coated aluminium fascia RAL 7040
- Exterior ground level - Levels under design development by others, generally 150mm below GF SSL

- Powder coated aluminium fascia below cill mounted on Unistrut channels with rigid insulation board and DPM to cavity. RAL 7012 to match curtain walling
- Slate blue smooth 2232 facing brick below DPC to brickwork piers 25mm inset of brickwork above
- Polyester powder coated aluminum kiosk door RAL 7012
- Polyester powder coated aluminum infill curtain walling panel

NOTE:

Signage specification
Aluminium fascia sign with new black satin finish. Lettering laser cut with 25mm clear acrylic routed. Capped in gold sprayed acrylic. All signage internally illuminated using LED light source. All signage depths 100mm
All external levels TBC by landscape designer



contract
**ANFIELD RETAIL STORE
LIVERPOOL**
drawing
N, NE & SE ELEVATIONS



KKA ARCHITECTURE HIGHPOINT HIGHFIELD STREET LIVERPOOL L3 6AA
TELEPHONE 0151 236 3186 EMAIL ARCHITECTS@KKA.LTD.UK WWW.KKA.LTD

drawn	JM	checked	-	approved	-
scale	1:100	date	MAY 16	cad file	4327 G209
job no.	4327	dwg no.	SK210	revision	P2