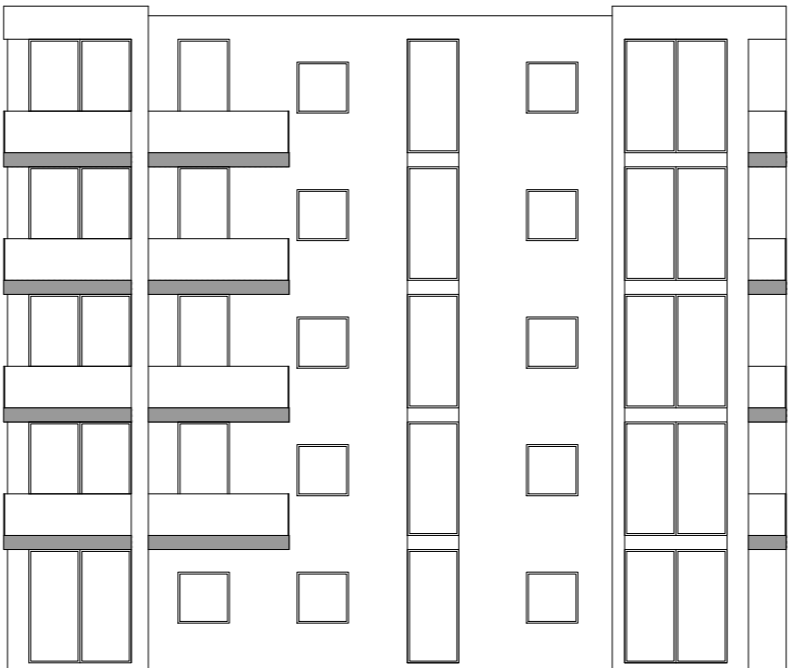


This drawing is the copyright of WD Architects and may not be reproduced in any form without prior written consent. Issue of this drawing does not impart any real or implied copyright licence.

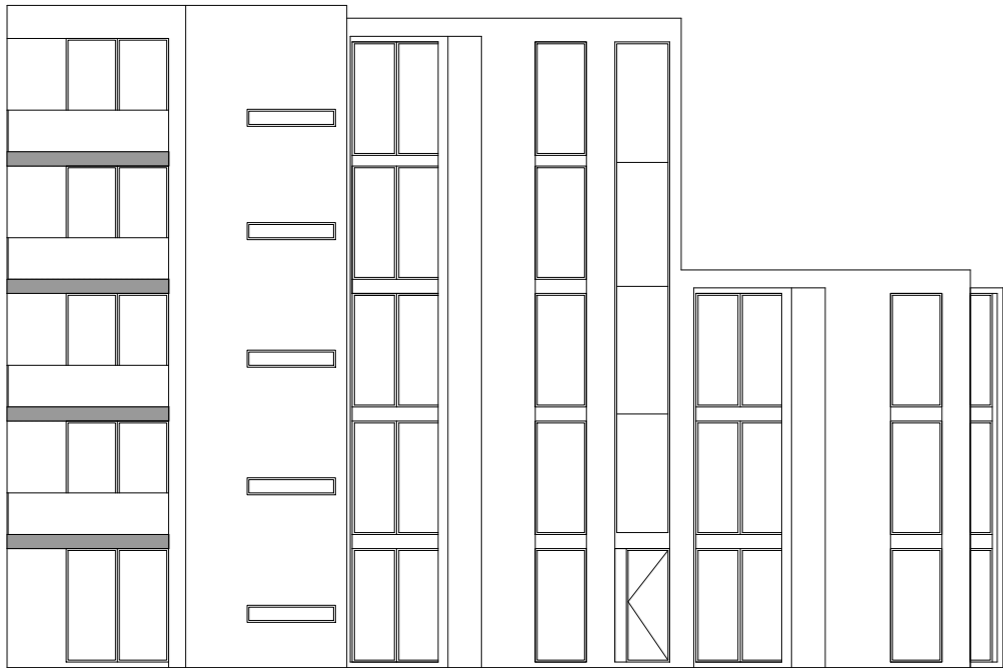
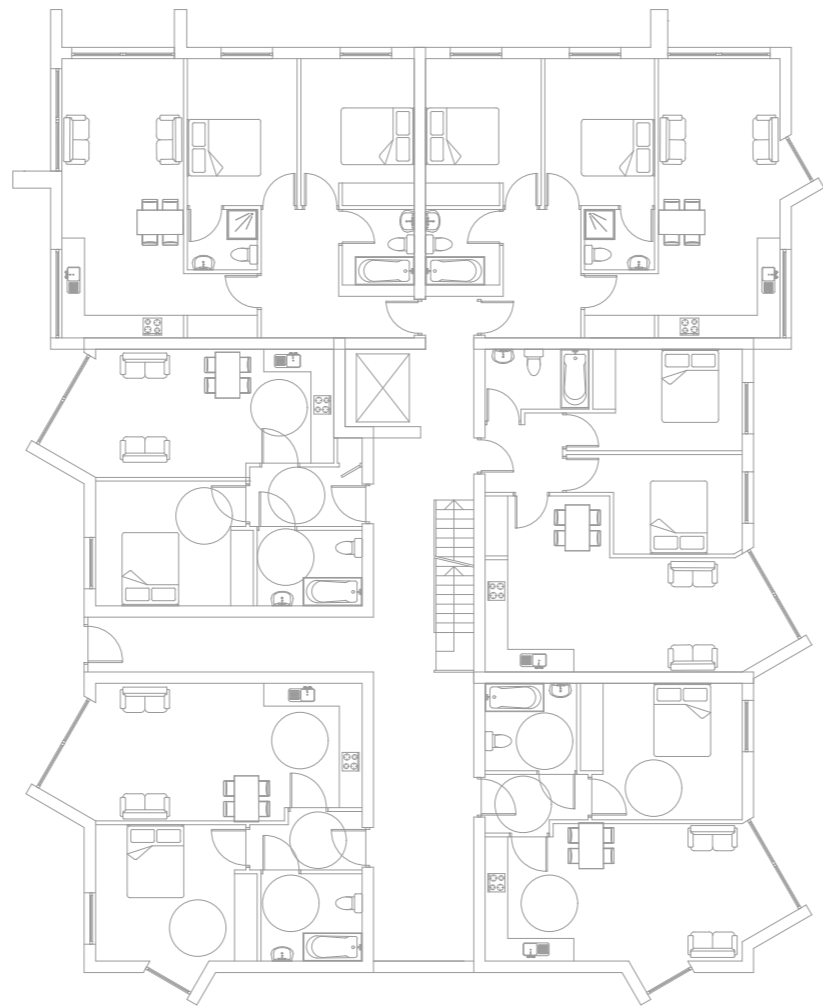
This drawing must be read in conjunction with all associated architect's, consultants', sub-contractors', specialists' drawings and specifications.

Do not scale from this drawing.

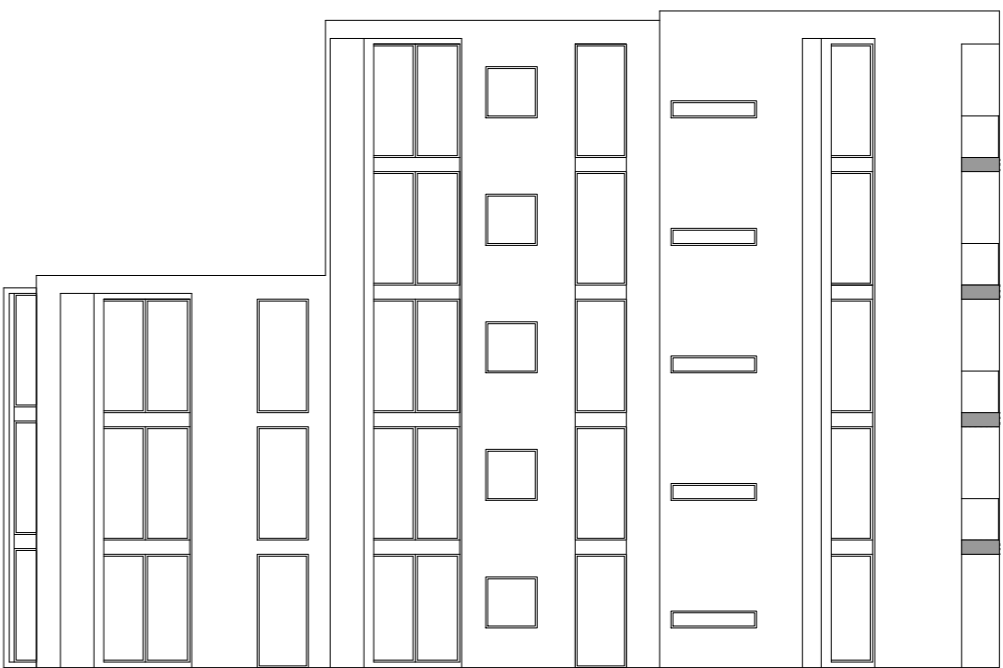
Notes:



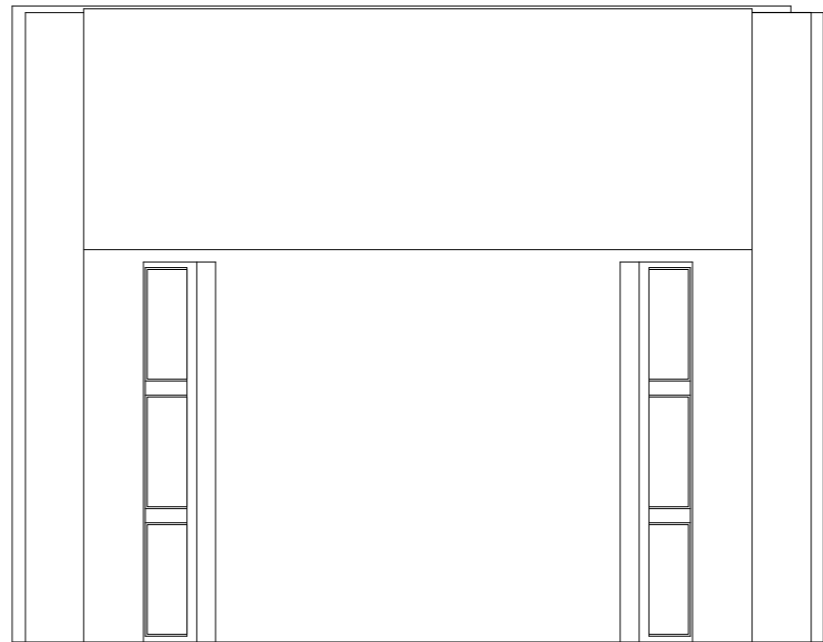
FRONT ELEVATION



LEFT SIDE ELEVATION



RIGHT SIDE ELEVATION



REAR ELEVATION

KEY:

Copper Coloured Powder
Coated Aluminium



DRAWING NUMBER	DATE
345-P-06	11/12/18
REVISION 3	SCALE 1:200 @ A2
	DRAWN XX

JOB TITLE
Land at Upper Parliament Street
Upper Parliament Street Liverpool L8 7SS
DRAWING TITLE
BLOCK 2 GF PLAN & ELEVATIONS

WD

Architects

RIBA

Chartered Architect

arb

Atlantic House
143 Sefton Street
Liverpool L8 5SN

0151 332 0120
info@wrootdesign.co.uk
wrootdesign.co.uk