

#### Health and Safety Information

In addition to the hazards/ risks normally associated with the types of work detailed on this drawing, please note the following.

#### Construction

Refer to Project CDM Significant Hazard and Risk Register

#### Maintenance / Cleaning / Operation

Refer to Project CDM Significant Hazard and Risk Register

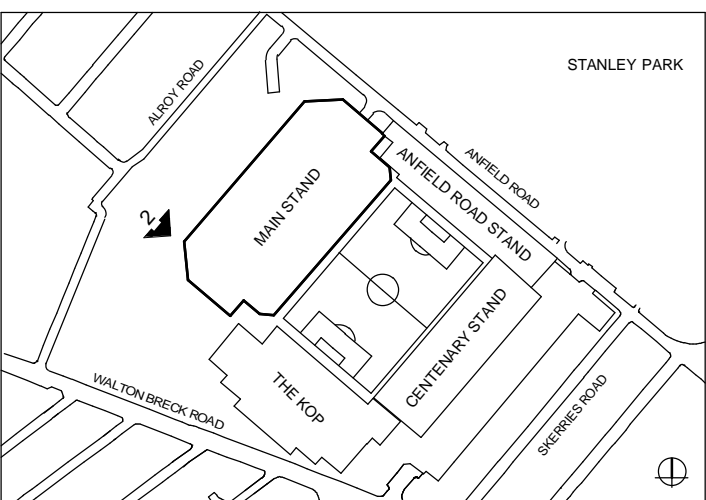
#### Decommissioning / Demolition

Refer to Project CDM Significant Hazard and Risk Register

#### Revisions

PL1	25.04.14	PLANNING ISSUE	SB	JF
-----	----------	----------------	----	----

- 1 DARK RED FACING BRICK IN STRETCHER BOND WITH SPECIAL BRICK SPLAYS & MATCHING COLOUR MORTAR
- 2 RED FACING BRICK IN STRETCHER BOND WITH SPECIAL BRICK SPLAYS & MATCHING COLOUR MORTAR
- 3 RED FACING BRICK FINS WITH STANDARD SPECIAL BRICK SPLAYS & SANDSTONE CAPPING DETAIL
- 4 LFC CLUB CREST PANEL WITH POWDER COATED FINISH - RAL 9006 SILVER METALLIC WITH RECESSED STRETCHER BRICK DETAIL FEATURE PANEL BEHIND
- 8 RECONSTITUTED SANDSTONE PARAPET CAPPING & PAINTED STEEL INCLINED OUTER BALUSTRADE - RAL 3020 RED / RAL 7004 LIGHT GREY
- 10 STOVE ENAMELLED PANEL CLADDING SURROUND TO RETAIL STORE ENTRANCE & PODIUM STAIR - RAL 3020 RED
- 13 SINGLE GLAZED CURTAIN WALLING WITH RED BACK PAINTED GLASS. GRADED RED DOT MATRIX FRITTING TO OUTER PANELS, AND MATCHING RED CAPPINGS - RAL 3020 RED
- 14 METAL UP AND OVER FIN DETAIL WITH POWDER COATED FINISH - RAL 7012 GREY
- 23 METAL PLANT LOUVRE SCREEN AND MATCHING DOORS WITH POWDER COATED FINISH - RAL 7012 GREY
- 24 ROOF LEVEL METAL PLANT LOUVRE SCREEN AND SUPPORT FRAME WITH POWDER COATED FINISH - RAL 7012 GREY
- 25 EXPOSED UNDERSIDE OF PRECAST CONCRETE UPPER TIER SEATING UNITS
- 26 STEEL UPPER TIER SUPPORT STRUCTURE WITH HIGH PERFORMANCE EPOXY PAINTED FINISH - RAL 7004 LIGHT GREY



KEY PLAN - PHASE 1

#### PLANNING

Client  
**LIVERPOOL FOOTBALL CLUB**

Project

**ANFIELD STADIUM EXPANSION  
MAIN STAND PHASE 1**

Drawing title

**DETAIL ELEVATION 3  
NORTH WEST ELEVATION**

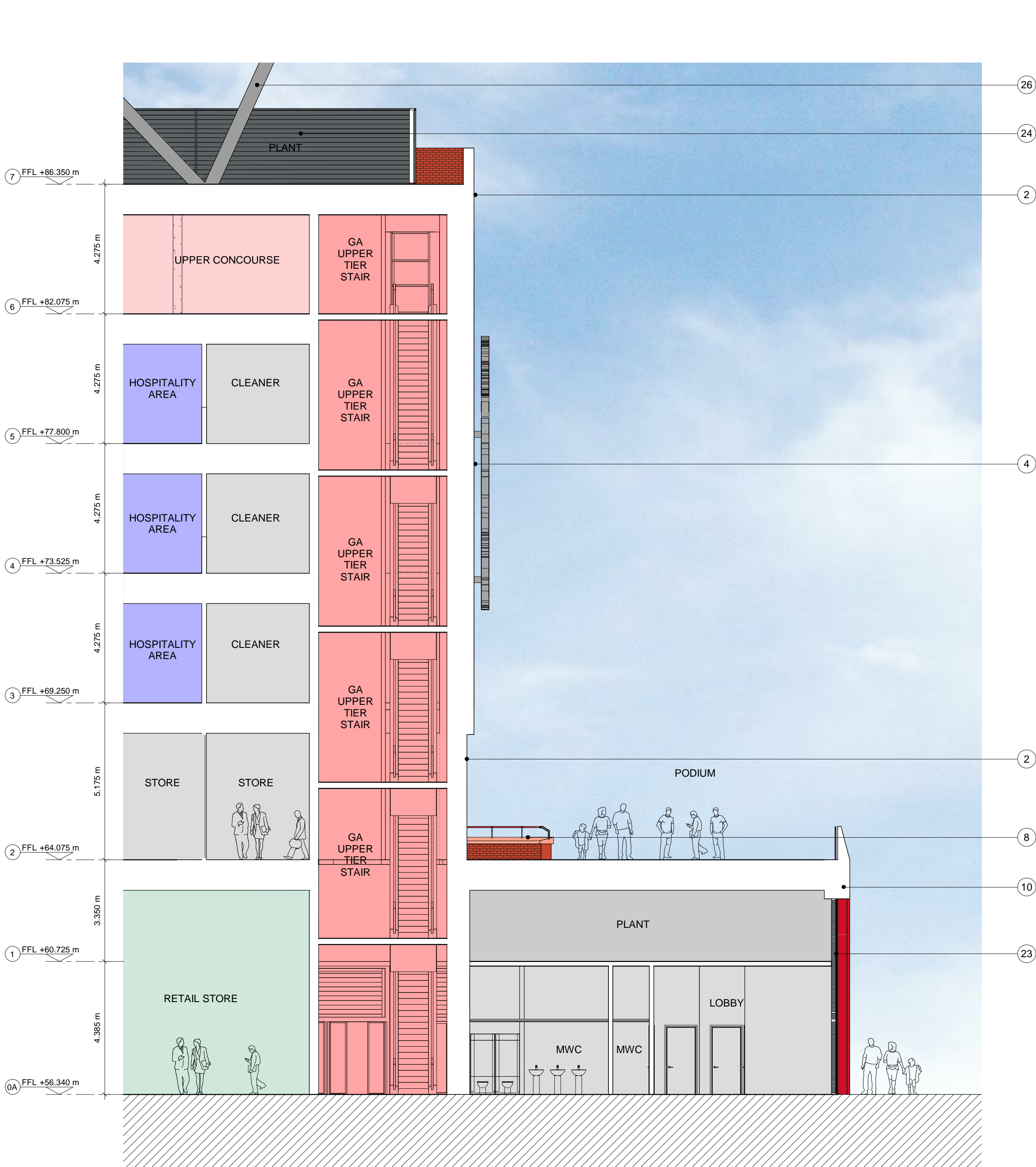
**KSS**

London  
1 James Street  
London W1U 1DR  
T+44(0)20 7507 2222  
F+44(0)20 7507 2299

Sevenoaks  
7 Blighs Walk  
Sevenoaks TN11 3 1DB  
T+44(0)20 7507 2222  
F+44(0)1732 467 841

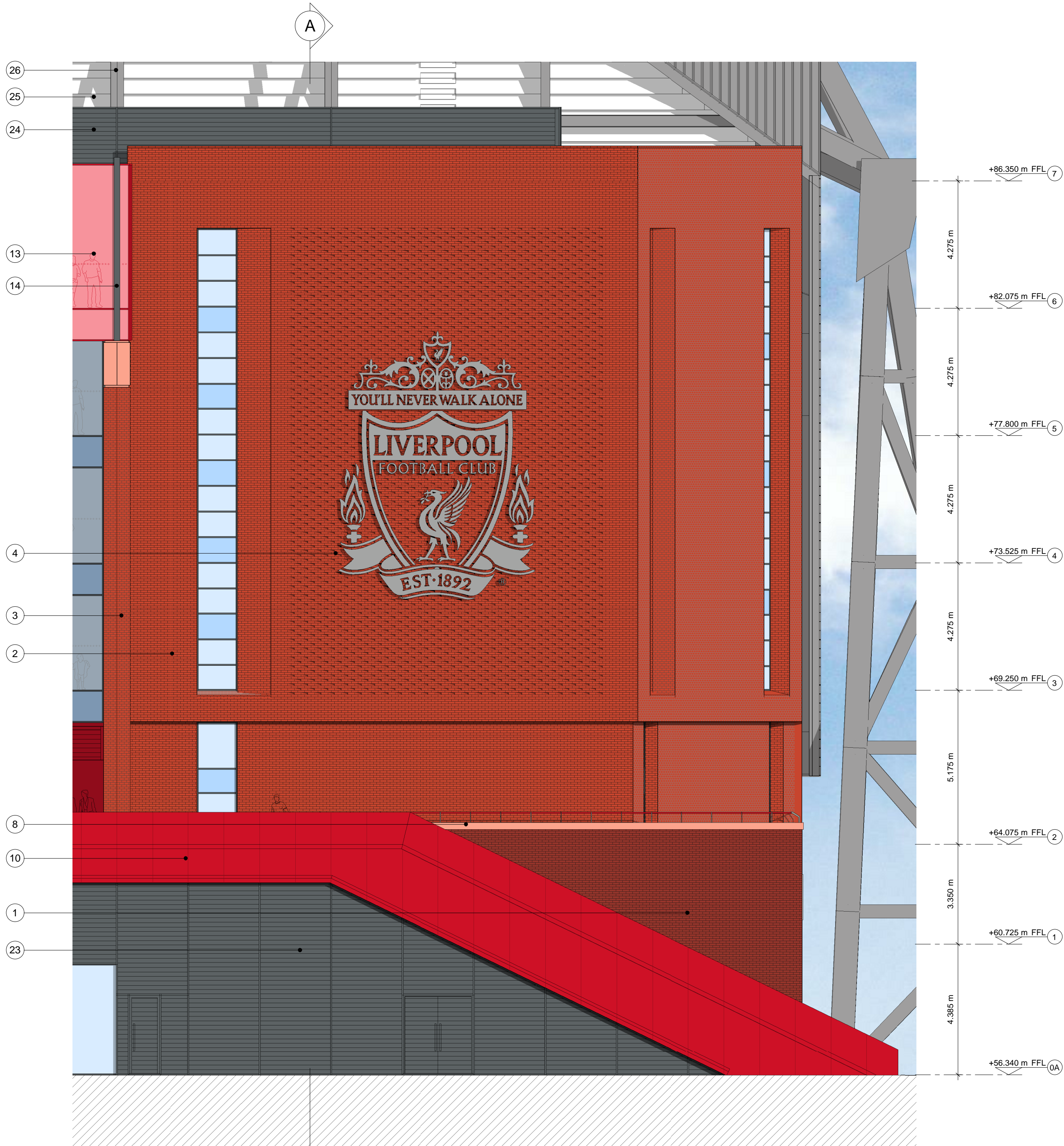
Scale at A1  
1 : 100  
File ref  
12609-ARCHMaster  
Drawn by  
Date drawn  
SB  
14.03.14  
Checked by  
Date checked  
JF  
22.04.14

Project number	Drawing number	Revision
12609	322	PL1



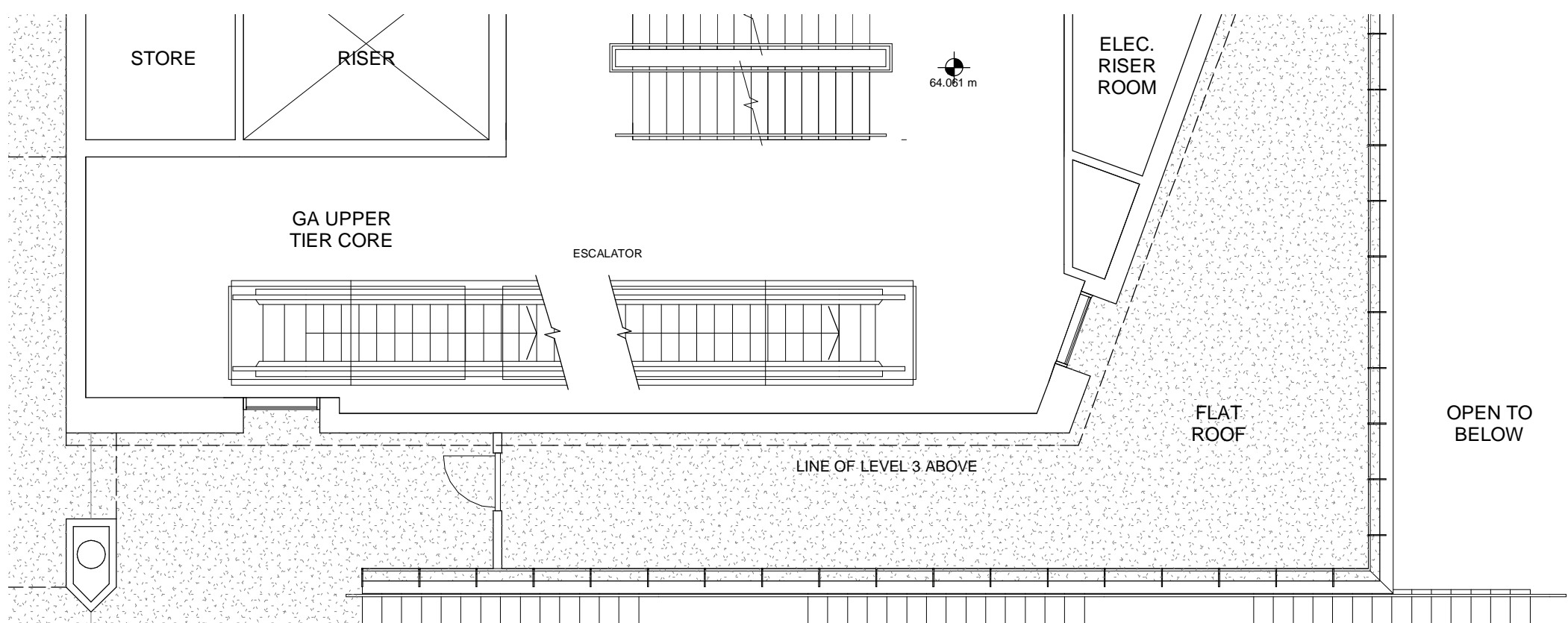
1 DETAIL SECTION

NORTH WEST ELEVATION



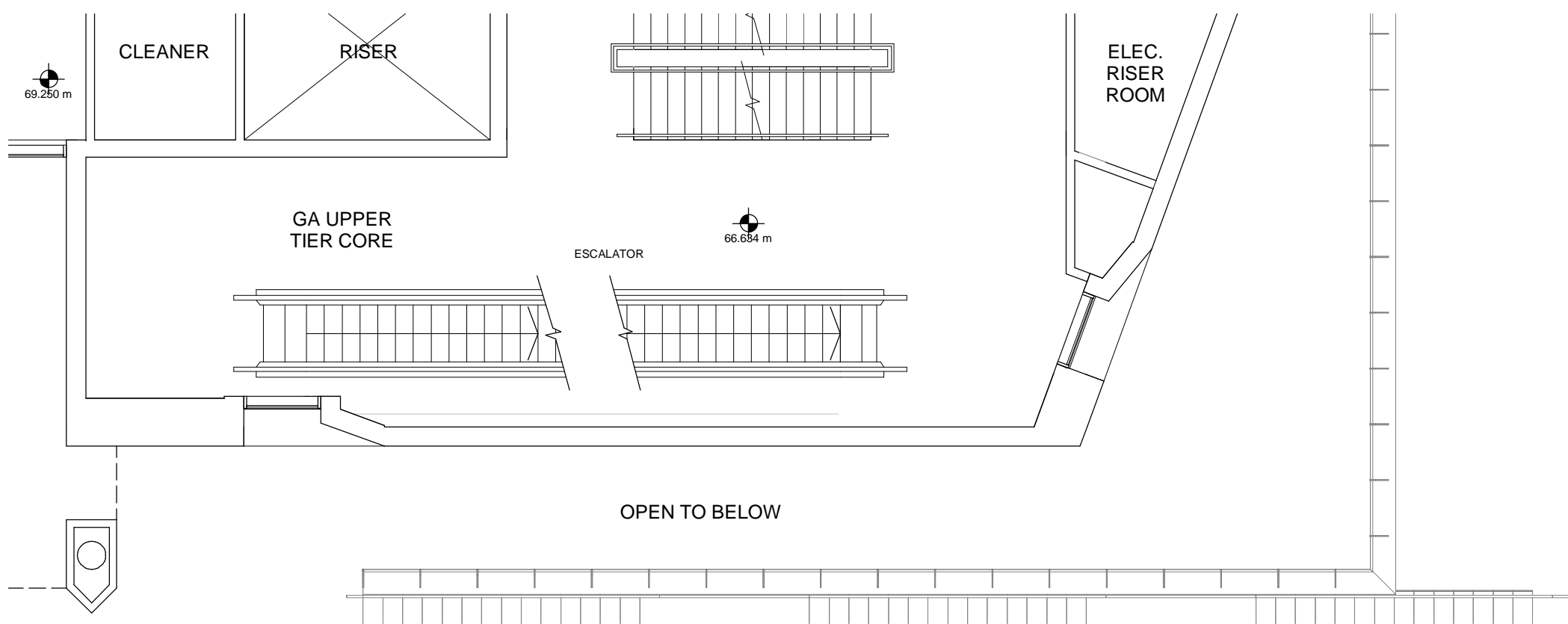
2 DETAIL ELEVATION

NORTH WEST ELEVATION



3 DETAIL LEVEL 2 PLAN

NORTH WEST ELEVATION



4 DETAIL LEVEL 3 PLAN

NORTH WEST ELEVATION

SCALE  
0m 1 2 5 10