

All rights reserved. KSS asserts its rights under the Copyright, Designs and Patents Act 1988. (Unless otherwise agreed in writing).
Figured dimensions only are to be taken from this drawing. All dimensions are in millimeters unless otherwise stated. All dimensions shall be checked on site prior to works commencing. Any discrepancies shall be reported to KSS. Do not scale this drawing.

Health and Safety Information

In addition to the hazards/ risks normally associated with the types of work detailed on this drawing, please note the following.

Construction

Refer to Project CDM Significant Hazard and Risk Register

Maintenance / Cleaning / Operation

Refer to Project CDM Significant Hazard and Risk Register

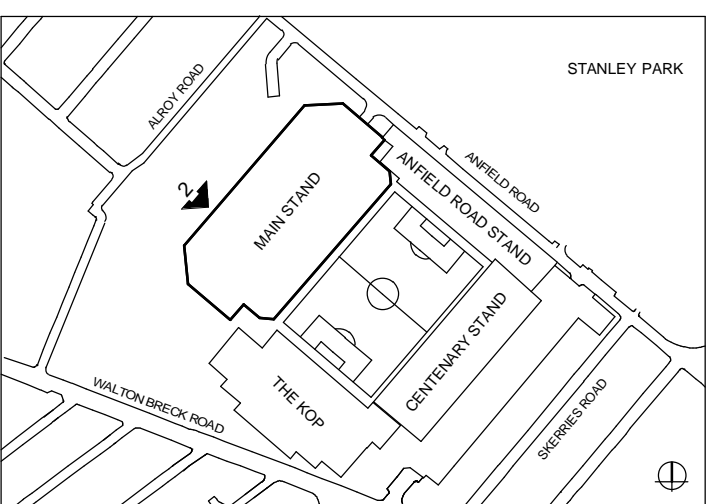
Decommissioning / Demolition

Refer to Project CDM Significant Hazard and Risk Register

Revisions

PL1	25.04.14	PLANNING ISSUE	SB	JF
-----	----------	----------------	----	----

- 1 DARK RED FACING BRICK IN STRETCHER BOND WITH SPECIAL BRICK SPLAYS & MATCHING COLOUR MORTAR
- 2 RED FACING BRICK IN STRETCHER BOND WITH SPECIAL BRICK SPLAYS & MATCHING COLOUR MORTAR
- 3 RED FACING BRICK FINS WITH STANDARD SPECIAL BRICK SPLAYS & SANDSTONE CAPPING DETAIL
- 4 LFC CLUB GREST PANEL WITH POWDER COATED FINISH - RAL 9006 SILVER METALLIC WITH RECESSED STRETCHER BRICK DETAIL FEATURE PANEL BEHIND
- 5 RECONSTITUTED SANDSTONE PARAPET CAPPING & PAINTED STEEL INCLINED OUTER BALUSTRADE - RAL 3020 RED / RAL 7004 LIGHT GREY
- 6 STOVE ENAMELLED PANEL CLADDING SURROUND TO RETAIL STORE ENTRANCE & PODIUM STAIR - RAL 3020 RED
- 7 STOVE ENAMELLED PANEL CLADDING TO EXPOSED PODIUM LIFT ENCLOSURE - RAL 3020 RED
- 8 DOUBLE GLAZED CURTAIN WALLING WITH RED BACK-PAINTED GLASS, GRADED RED DOT MATRIX FRITTING TO OUTER PANELS, AND MATCHING RED CAPPINGS - RAL 3020 RED
- 9 METAL UP AND OVER FIN DETAIL WITH POWDER COATED FINISH - RAL 7012 GREY
- 10 METAL FLUSH SOFFIT CLADDING PANELS WITH POWDER COATED FINISH - RAL 3020 RED
- 11 DOUBLE GLAZED METAL EXTERNAL DOORS WITH STAINLESS STEEL IRONMONGERY & POWDER COATED FINISH - RAL 7012 GREY
- 12 GENERAL ADMISSION METAL TURNSTILES AND EXIT DOORS WITH POWDER COATED FINISH - RAL 3020 RED
- 13 METAL LOUVRE SCREEN TURNSTILE OVER-PANEL WITH POWDER COATED FINISH - RAL 7012 GREY
- 14 METAL PLANT LOUVRE SCREEN AND MATCHING DOORS WITH POWDER COATED FINISH - RAL 7012 GREY
- 15 ROOF LEVEL METAL PLANT LOUVRE SCREEN AND SUPPORT FRAME WITH POWDER COATED FINISH - RAL 7012 GREY
- 16 EXPOSED UNDERSIDE OF PRECAST CONCRETE UPPER TIER SEATING UNITS
- 17 STEEL UPPER TIER SUPPORT STRUCTURE WITH HIGH PERFORMANCE EPOXY PAINTED FINISH - RAL 7004 LIGHT GREY



KEY PLAN - PHASE 1

PLANNING

Client

LIVERPOOL FOOTBALL CLUB

Project

ANFIELD STADIUM EXPANSION

MAIN STAND PHASE 1

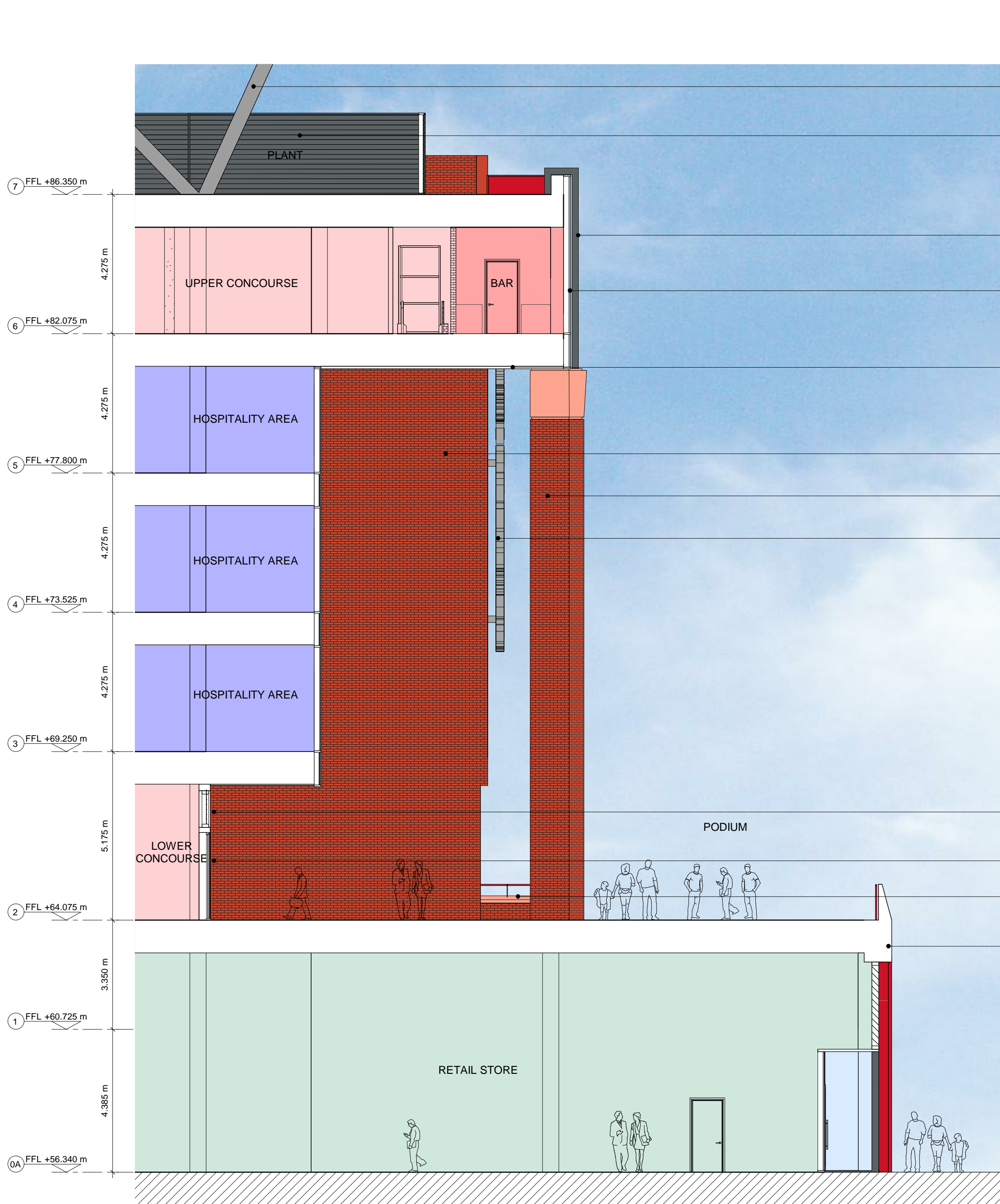
Drawing title

DETAIL ELEVATION 2
NORTH WEST ELEVATION

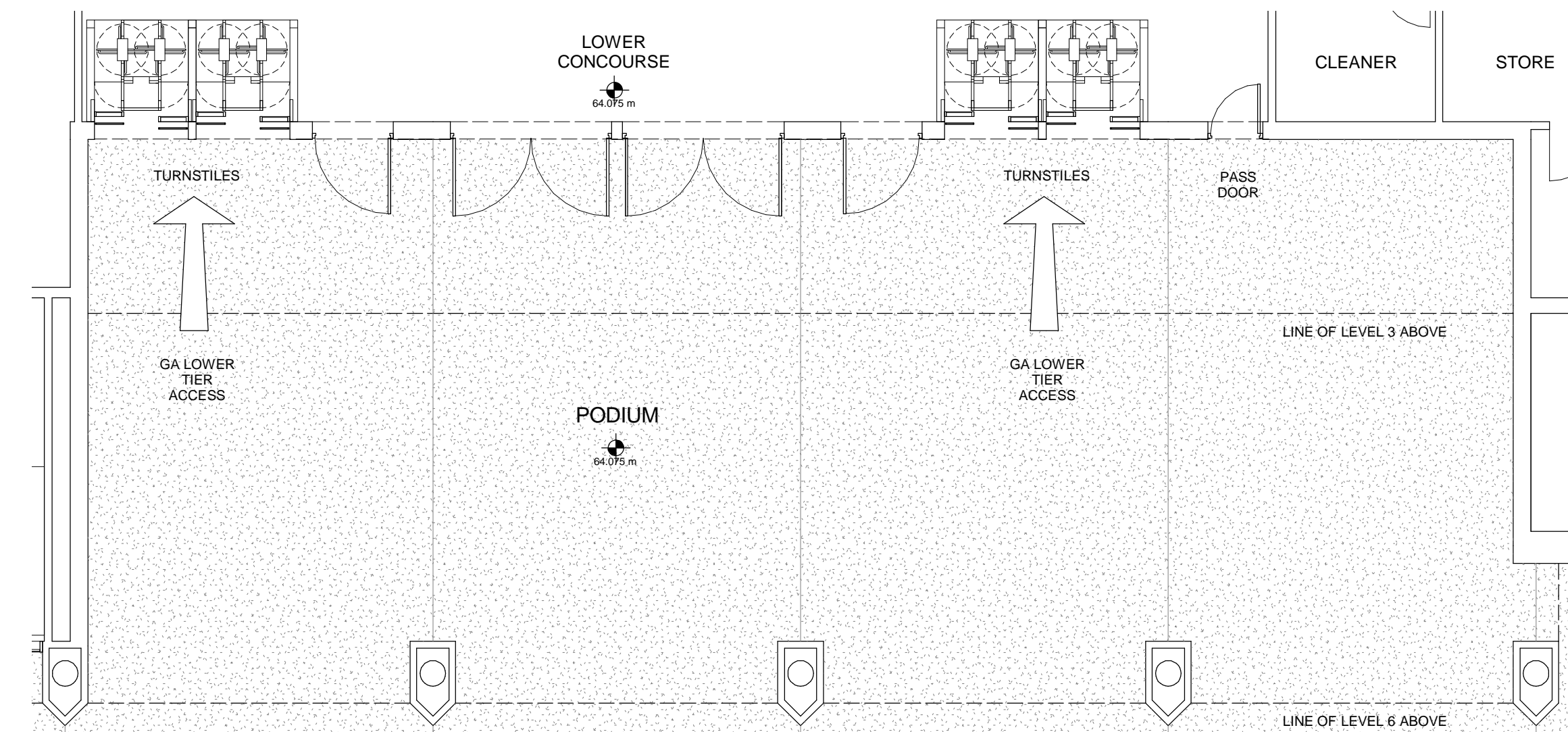
KSS

London 1 James Street London W1U 1DR T+44(0)20 7307 2222 F+44(0)20 7307 2299	Sevens Oaks 7 Blighs Walk Sevens Oaks TN11 3 1DB T+44(0)20 7307 2222 F+44(0)1732 467 841	Scale at A1 1 : 100 File ref 12609-ARCHMaster Drawn by SB Date drawn 14.03.14 Checked by JF Date checked 22.04.14
--	--	--

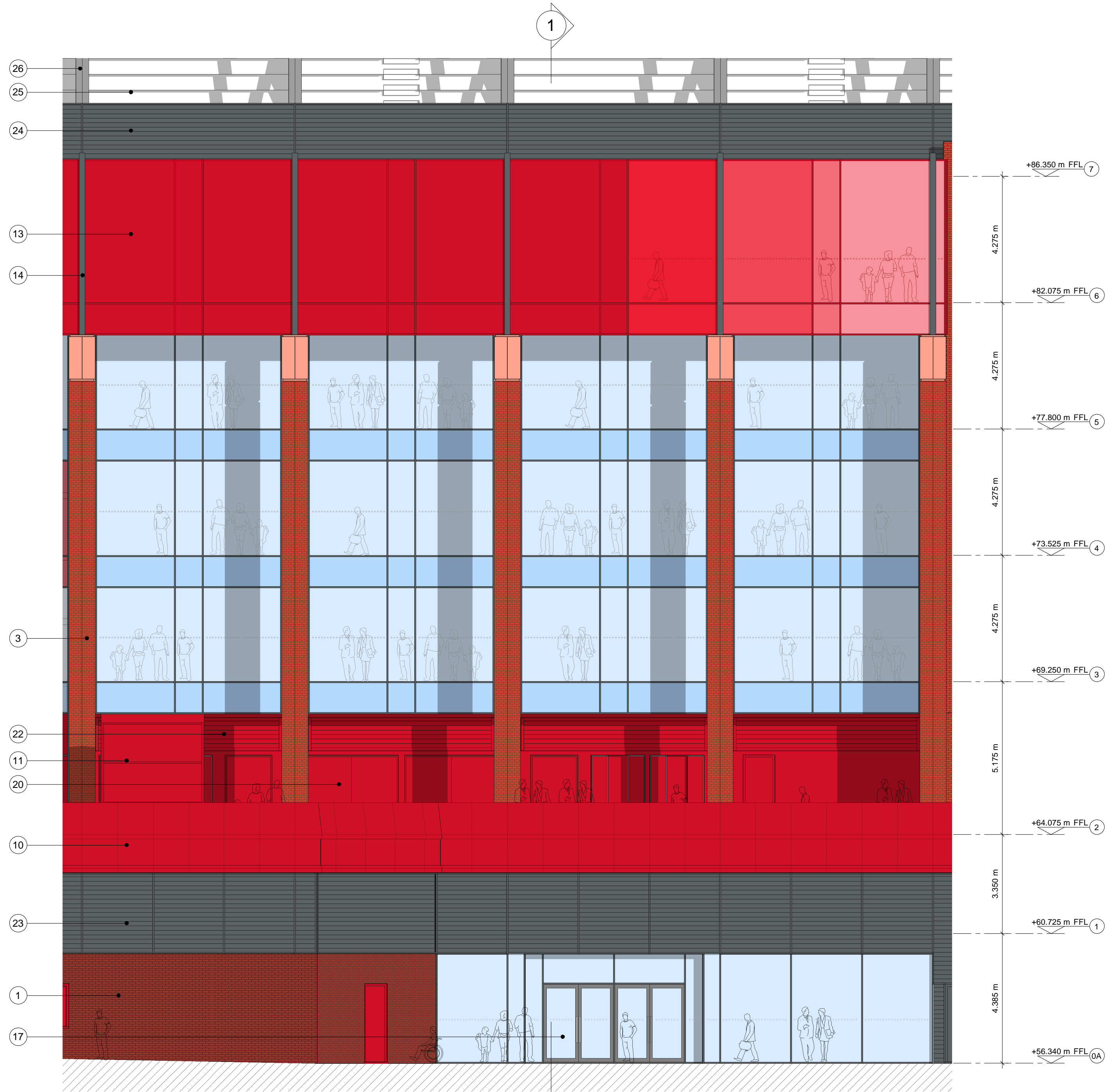
Project number	Drawing number	Revision
12609	321	PL1



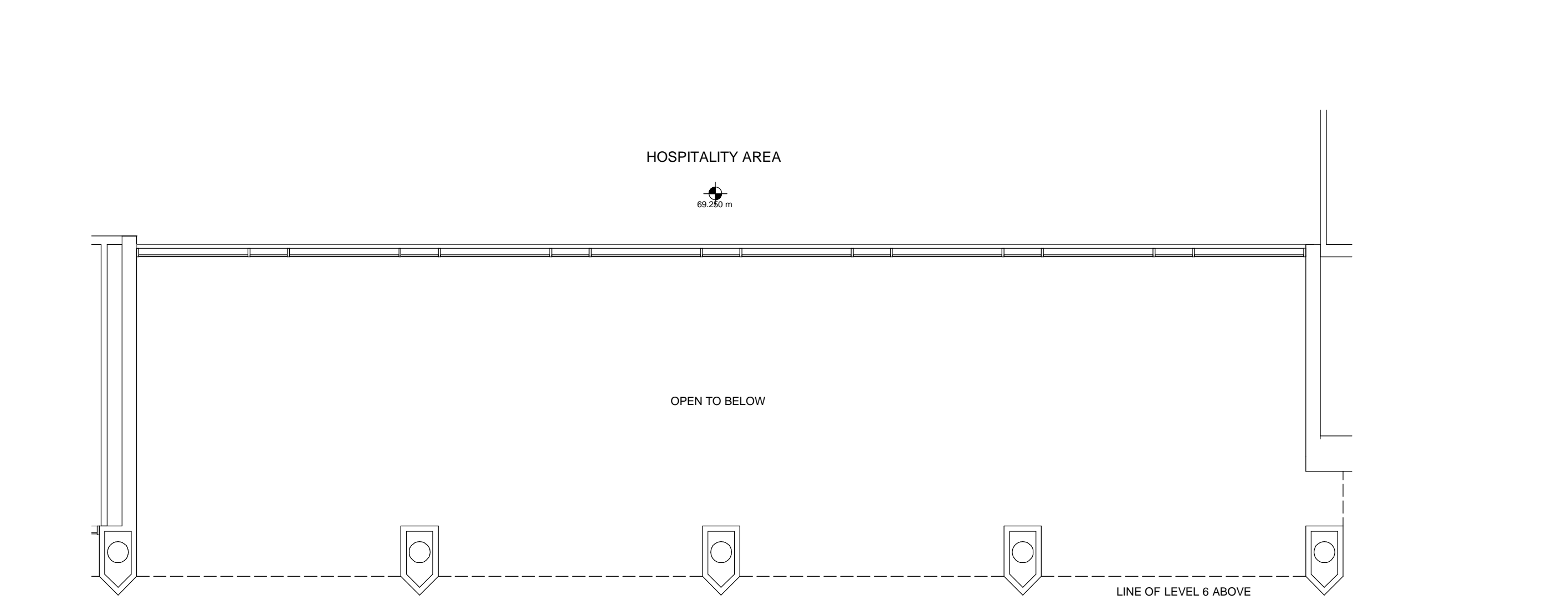
1
DETAIL SECTION
NORTH WEST ELEVATION



3
DETAIL LEVEL 2 PLAN
NORTH WEST ELEVATION



2
DETAIL ELEVATION
NORTH WEST ELEVATION



4
DETAIL LEVEL 3 PLAN
NORTH WEST ELEVATION

SCALE
0m 1 2 5 10