

#### Health and Safety Information

In addition to the hazards/ risks normally associated with the types of work detailed on this drawing, please note the following.

#### Construction

Refer to Project CDM Significant Hazard and Risk Register

#### Maintenance / Cleaning / Operation

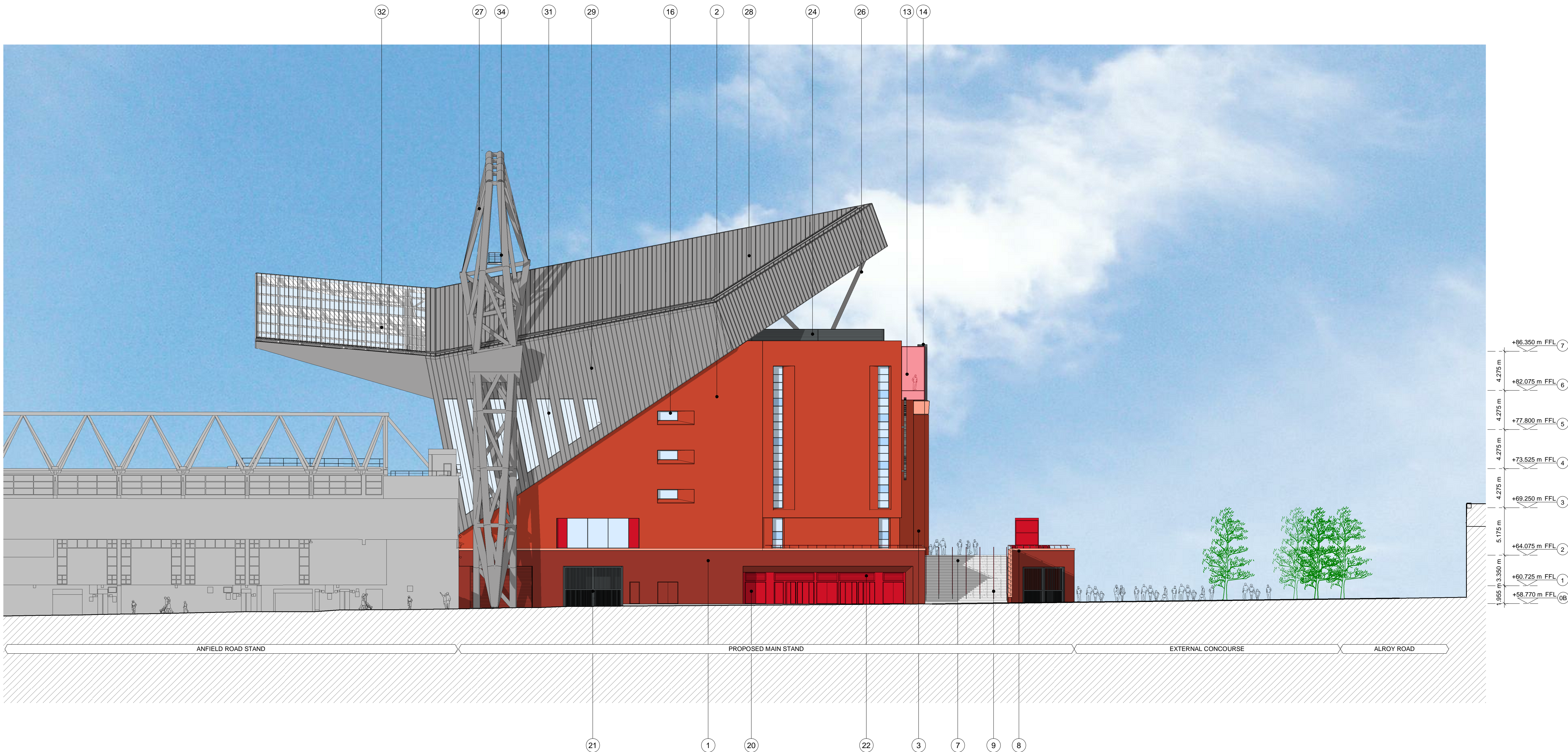
Refer to Project CDM Significant Hazard and Risk Register

#### Decommissioning / Demolition

Refer to Project CDM Significant Hazard and Risk Register

#### Revisions

PL1	25.04.14	PLANNING ISSUE	SB	JF
-----	----------	----------------	----	----



1

## NORTH EAST ELEVATION

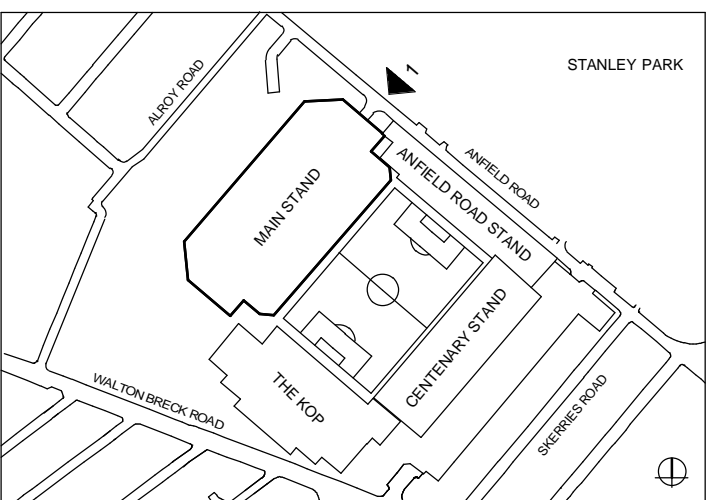
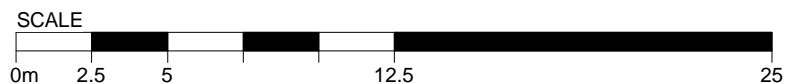
### PROPOSED GENERAL ARRANGEMENT ELEVATION

- 1 DARK RED FACING BRICK IN STRETCHER BOND WITH SPECIAL BRICK SPLAYS AND MATCHING COLOUR MORTAR
- 2 RED FACING BRICK IN STRETCHER BOND WITH SPECIAL BRICK SPLAYS AND MATCHING COLOUR MORTAR
- 3 RED FACING BRICK FINS WITH STANDARD SPECIAL BRICK SPLAYS AND SANDSTONE CAPPING DETAIL
- 4 LFC CLUB CREST PANEL WITH POWDER COATED FINISH - RAL 9006 SILVER METALLIC WITH RECESSED STRETCHER BRICK DETAIL FEATURE PANEL BEHIND
- 5 RANDOM COURSE SANDSTONE CLADDING TO HILLSBOROUGH MEMORIAL BACKDROP
- 6 PUBLIC ART PANEL ADJACENT HILLSBOROUGH MEMORIAL DESIGNED BY OTHERS
- 7 RED AND LIGHT GREY CONCRETE SLAB PAVING TO PODIUM AND STEPS, WITH TACTILE PANELS TO TOP AND BOTTOM
- 8 RECONSTITUTED SANDSTONE PARAPET CAPPING AND PAINTED STEEL INCLINED OUTER BALUSTRADE - RAL 3020 RED / RAL 7004 LIGHT GREY
- 9 PAINTED STEEL HANDRAILS AND BALUSTRADES TO PODIUM STEPS - RAL 3020 RED / RAL 7004 LIGHT GREY

- 10 STOVE ENAMELLED PANEL CLADDING SURROUND TO RETAIL STORE ENTRANCE AND PODIUM STAIR - RAL 3020 RED
- 11 STOVE ENAMELLED PANEL CLADDING TO EXPOSED PODIUM LIFT ENCLOSURE - RAL 3020 RED
- 12 DOUBLE GLAZED CURTAIN WALLING WITH GRADED RED BACK DOT MATRIX FRITTING TO CENTRAL PANELS AND POWDER COATED CAPPING TRIMS - RAL 7012 GREY
- 13 SINGLE GLAZED CURTAIN WALLING WITH RED BACK-PAINTED GLASS, GRADED RED DOT MATRIX FRITTING TO OUTER PANELS, AND MATCHING RED CAPPINGS - RAL 3020 RED
- 14 METAL UP AND OVER FIN DETAIL WITH POWDER COATED FINISH - RAL 7012 GREY
- 15 METAL FLUSH SOFFIT CLADDING PANELS WITH POWDER COATED FINISH - RAL 3020 RED
- 16 DOUBLE GLAZED METAL CASEMENT WINDOWS AND FIXED LIGHTS WITH POWDER COATED FINISH - RAL 7012 GREY
- 17 DOUBLE GLAZED METAL EXTERNAL DOORS WITH STAINLESS STEEL IRONMONGERY & POWDER COATED FINISH - RAL 7012 GREY
- 18 DOUBLE GLAZED AUTOMATIC BI-PARTING HOSPITALITY ENTRANCE DOORS WITH POWDER COATED FINISH - RAL 7012 GREY

- 19 METAL TICKET WINDOWS WITH INTEGRAL ROLLER SHUTTER AND POWDER COATED FINISH - RAL 3020 RED
- 20 GENERAL ADMISSION METAL TURNSTILES AND EXIT DOORS WITH POWDER COATED FINISH - RAL 3020 RED
- 21 PURPOSE DESIGNED AUTOMATIC STEEL GATES AND FRAMES WITH PAINTED FINISH - RAL 7016 DARK GREY
- 22 METAL LOUVRE SCREEN TURNSTILE OVER-PANEL WITH POWDER COATED FINISH - RAL 3020 RED
- 23 METAL PLANT LOUVRE SCREEN AND MATCHING DOORS WITH POWDER COATED FINISH - RAL 7012 GREY
- 24 ROOF LEVEL METAL PLANT LOUVRE SCREEN AND SUPPORT FRAME WITH POWDER COATED FINISH - RAL 7012 GREY
- 25 EXPOSED UNDERSIDE OF PRECAST CONCRETE UPPER TIER SEATING UNITS
- 26 STEEL UPPER TIER SUPPORT STRUCTURE WITH HIGH PERFORMANCE EPOXY PAINTED FINISH - RAL 7004 LIGHT GREY
- 27 STEEL ROOF SUPPORT STRUCTURE WITH HIGH PERFORMANCE EPOXY PAINTED FINISH - RAL 7004 LIGHT GREY

- 28 PROFILED METAL CLADDING TO ROOF TOP SURFACE WITH PROPRIETARY PVF2 FINISH - RAL 7004 LIGHT GREY
- 29 PROFILED METAL CLADDING TO ROOF FOLDED GABLE ELEMENTS WITH PVF2 FINISH - RAL 7004 LIGHT GREY
- 30 METAL SOFFIT CLADDING TO UNDERSIDE OF MAIN ROOF STRUCTURE WITH PVF2 FINISH - RAL 3020 RED
- 31 PROFILED CLEAR POLYCARBONATE SHEET CLADDING PANELS TO ROOF AND GABLES
- 32 PROFILED CLEAR POLYCARBONATE SHEET CLADDING ON GALVANISED STEEL BOX TO ROOF FRONT SECTION
- 33 METAL CLADDING FRONT FASCIA TO ROOF WITH POWDER COATED FINISH - RAL 7004 LIGHT GREY
- 34 GALVANISED STEEL MAINTENANCE WALKWAY WITH LANYARD SYSTEM SET WITHIN PRISMATIC ROOF TRUSS PROFILE



KEY PLAN - PHASE 1

#### PLANNING

Client

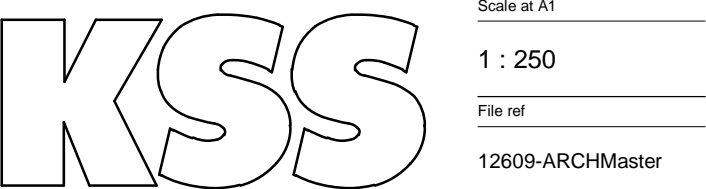
LIVERPOOL FOOTBALL CLUB

Project

ANFIELD STADIUM EXPANSION  
MAIN STAND PHASE 1

Drawing title

NORTH EAST ELEVATION



London 1 James Street London W1U 1DR T+44(0)20 7307 2222 F+44(0)20 7307 2299	Sevenoaks 7 Blighs Walk Sevenoaks TN11 3 1DB T+44(0)20 7307 2222 F+44(0)1732 467 841
--	--

Project number	Drawing number	Revision
12609	312	PL1