

The use of this data by the recipient acts as an agreement of the following statements. Do not use this data if you do not agree with any of the following statements:-

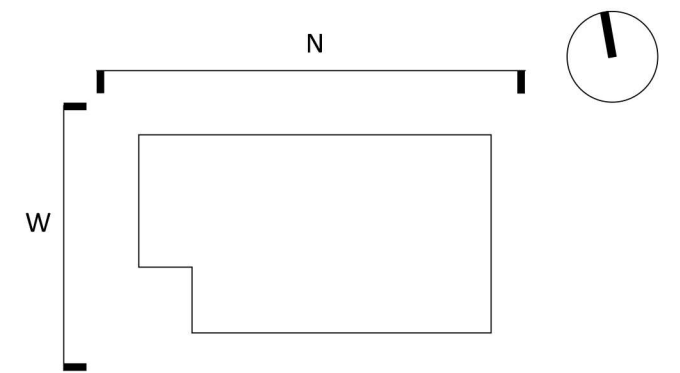
All drawings are based upon site information supplied by third parties and as such their accuracy cannot be guaranteed. All features are approximate and subject to clarification by a detailed topographical survey, statutory service enquiries and confirmation of the legal boundaries.

The controlled version of this drawing should be viewed in DWF or PDF format not DWG or other formats. All prints of this drawing must be made in full colour.

Where this drawing has been based upon Ordnance Survey data, it has been reproduced under the terms of Ryder Licence No. 100000144. Reproduction of this drawing in whole or in part is prohibited without the prior permission of Ordnance Survey.

Do not scale the drawing. Use figured dimensions in all cases. Check all dimensions on site. Report any discrepancies in writing to Ryder before proceeding.

#### Key Plan



#### Material Key

- A** All facades - Corten weathering steel rainscreen cassette system with concealed fixings located to joints. Pre-formed Corten panels to all window reveals including cills, jambs and soffits. Typically 1250mm horizontal centres and floor to floor height panels.
- B** Cantilever soffit - Corten weathering steel rainscreen cassette system with concealed fixings located to joints. Soffit joints to align with façade joints to form a grid arrangement.
- C** Double glazed 'punched window' glazing module with anodised aluminium finish. No opening lights.
- D** Double glazed curtain walling with anodised aluminium finish to main entrance.
- E** Double glazed door integrated into curtain walling system with anodised aluminium finish.
- F** Steel fire escape doors. RAL colour tbc.
- G** Corten expanded profiled mesh with aluminium louvres behind.
- H** Structural glass system to main entrance lobby walls and roof with silicone seal joints fixed back to SHS framework with stainless steel fixings. No visible fixings to external pane. Automatic glazed sliding doors.
- I** Louvred proprietary steel doors.
- J** Stainless steel signage to brand standards.
- K** Corten parapet capping.
- L** Feature polished blockwork.

Revision	Date	Drawn by	Checked by
P05	21/05/19	DPA	EMA

Issued for Planning

Revision	Date	Drawn by	Checked by
P04	25/03/19	DPA	PSW

Updated in line with agreed Stage 2 VE changes

Revision	Date	Drawn by	Checked by
P03	08/02/19	DPA	EMA

Updated in line with MS comments dated 5th Feb on Stage 2 Report Rev 01

Revision	Date	Drawn by	Checked by
P02	25/01/19	DPA	PSW

Updated in line with current layouts

Revision	Date	Drawn by	Checked by
P01	18/12/18	DPA	PSW

First Issue

Amendment

Purpose of Issue

Preliminary

Project

Morgan Sindall

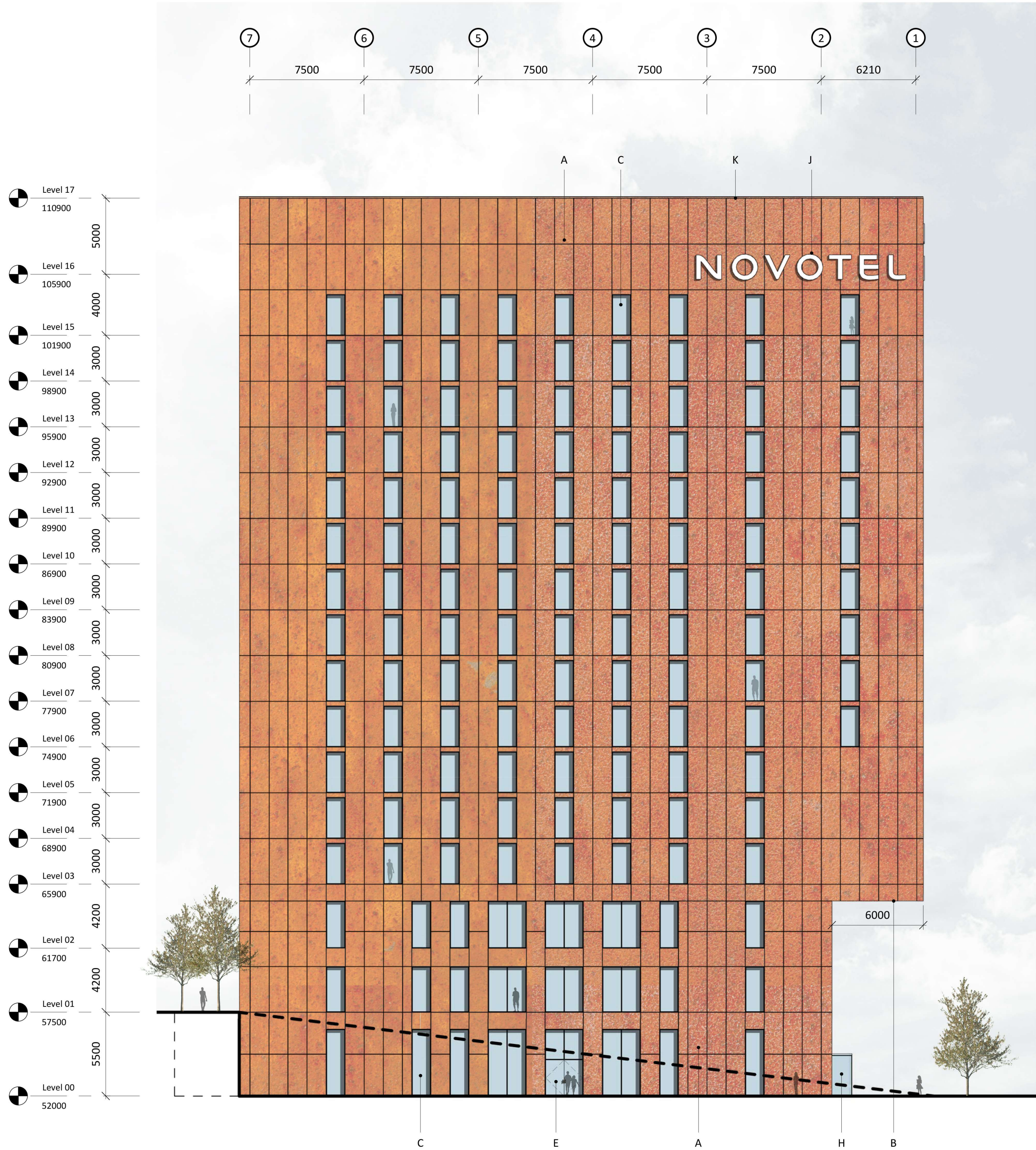
Paddington Village Hotel

Liverpool

Drawing

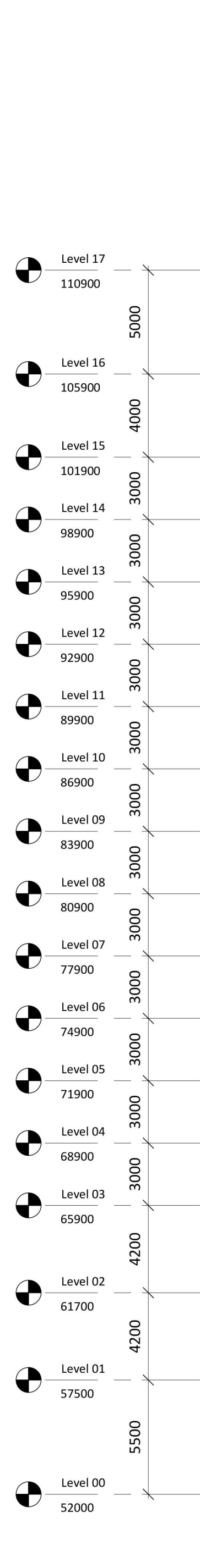
GA Elevations - North and West

Drawing No.	Project ID	Originator	Zone	Level	Type	Role	Number
HOTEL	-	RYD	-00	-ZZ	-DR	-A	-3600
Ryder Project No.	Scale at A1	Drawn By	Status	Revision			
3087-02	1 : 200	DPA	S2	P05			



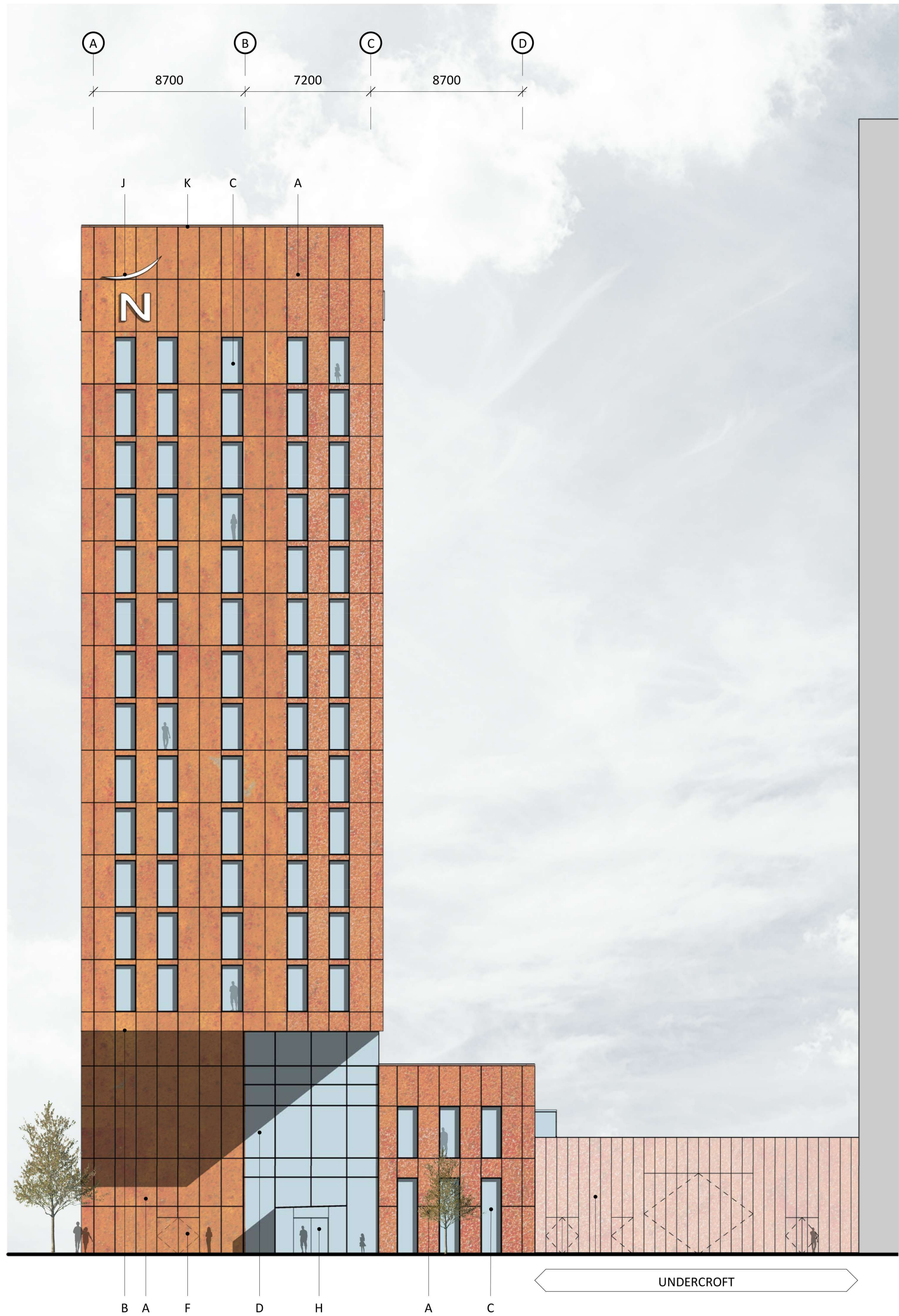
North Elevation

1 : 200



West Elevation

1 : 200



UNDERCROFT