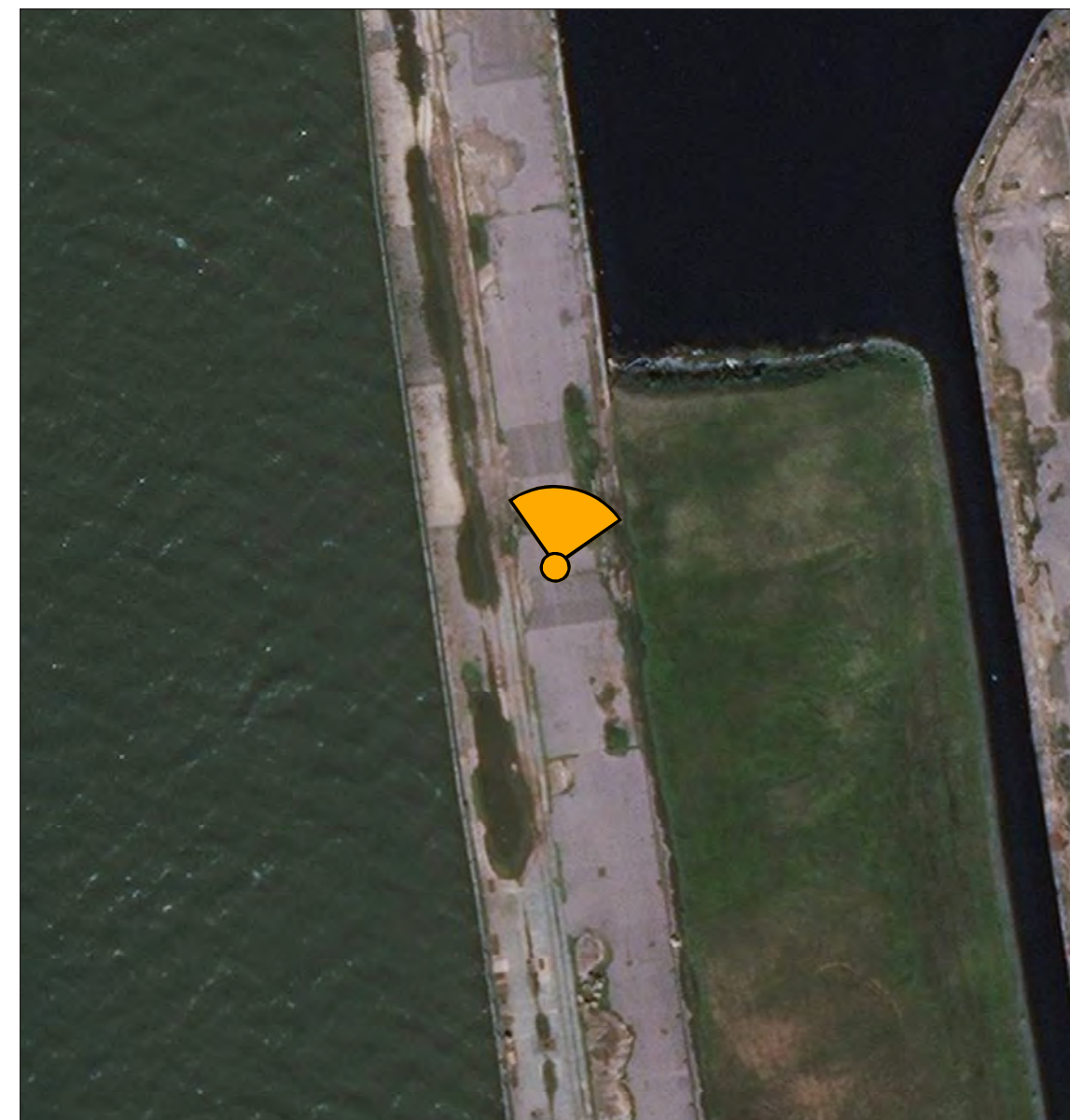


Scale 1:5,000



Scale 1:1,250

**Viewpoint 26:** View looking north-east from dock area south-west of Trafalgar Dock (and west of canal)

**Viewpoint information:**

OS reference: 333319.5, 391839

Ground level: 7.1m AOD

Direction of view: 10°

Distance to site: 520m

© Crown copyright and database rights 2020 Ordnance Survey 0100031673.  
Aerial Source: Esri, DigitalGlobe, GeoEye, Earthstar Geographics, CNES/Airbus DS,  
USDA, USGS, AeroGRID, IGN, and the GIS User Community.

**Viewpoint Photographs &  
Accurate Visual Representations**

**LA.35.0**

**Project no. A100795**  
The People's Project

**August 2020**

**Everton Stadium  
Development  
Limited**







Baseline Photograph

View flat at a comfortable arm's length

<b>Viewpoint information:</b>		Horizontal field of view:	90° (cylindrical projection)	Correct printed image size:	820 x 250mm
OS reference:	333319.5, 391839	Vertical field of view:	27°	Camera:	EOS 6D Mk II
Ground level:	7.1m AOD	Enlargement factor:	96%	Lens:	50mm (Canon EF 24-70mm f/4 IS USM)
Direction of view:	10°	Principal distance:	812.5mm	Camera height:	1.6m AGL
Distance to site:	520m	Paper size:	840 x 297mm (extended A3)	Date and time:	12/09/19 12:44

**Viewpoint 26:** View looking north-east from dock area south-west of Trafalgar Dock (and west of canal)

<b>Revision</b>	
A	Sheet layout updated

12/08/20

**Viewpoint Photographs &  
Accurate Visual Representations**

**LA.35.1** [B]

Project no. **A100795**  
The People's Project

August 2020

**Everton Stadium  
Development  
Limited**







Type 4 Visualisation - Photomontage

View flat at a comfortable arm's length





Type 4 Visualisation - Cumulative Photomontage

Note:  
Viewpoint 26 is located within one of the consented  
development blocks of Liverpool Waters

View flat at a comfortable arm's length

**Viewpoint information:**

OS reference: 333319.5, 391839  
Ground level: 7.1m AOD  
Direction of view: 10°  
Distance to site: 520m

Horizontal field of view: 90° (cylindrical projection)  
Vertical field of view: 27°  
Enlargement factor: 96%  
Principal distance: 812.5mm  
Paper size: 840 x 297mm (extended A3)

Correct printed image size: 820 x 250mm  
Camera: EOS 6D Mk II  
Lens: 50mm (Canon EF 24-70mm f/4 IS USM)  
Camera height: 1.6m AGL  
Date and time: 12/09/19 12:44

**Viewpoint 26:** View looking north-east from dock area south-west of Trafalgar Dock  
(and west of canal)

Revision		
A	Lighting column locations amended	28/01/20
B	Sheet layout updated, photomontage updated for revised stadium design, cumulative developments updated	12/08/20

**Key to Cumulative Developments:**

Under Construction	Submitted application
Consented	Awaiting submission of application

**Viewpoint Photographs &  
Accurate Visual Representations**

LA.35.3[B]

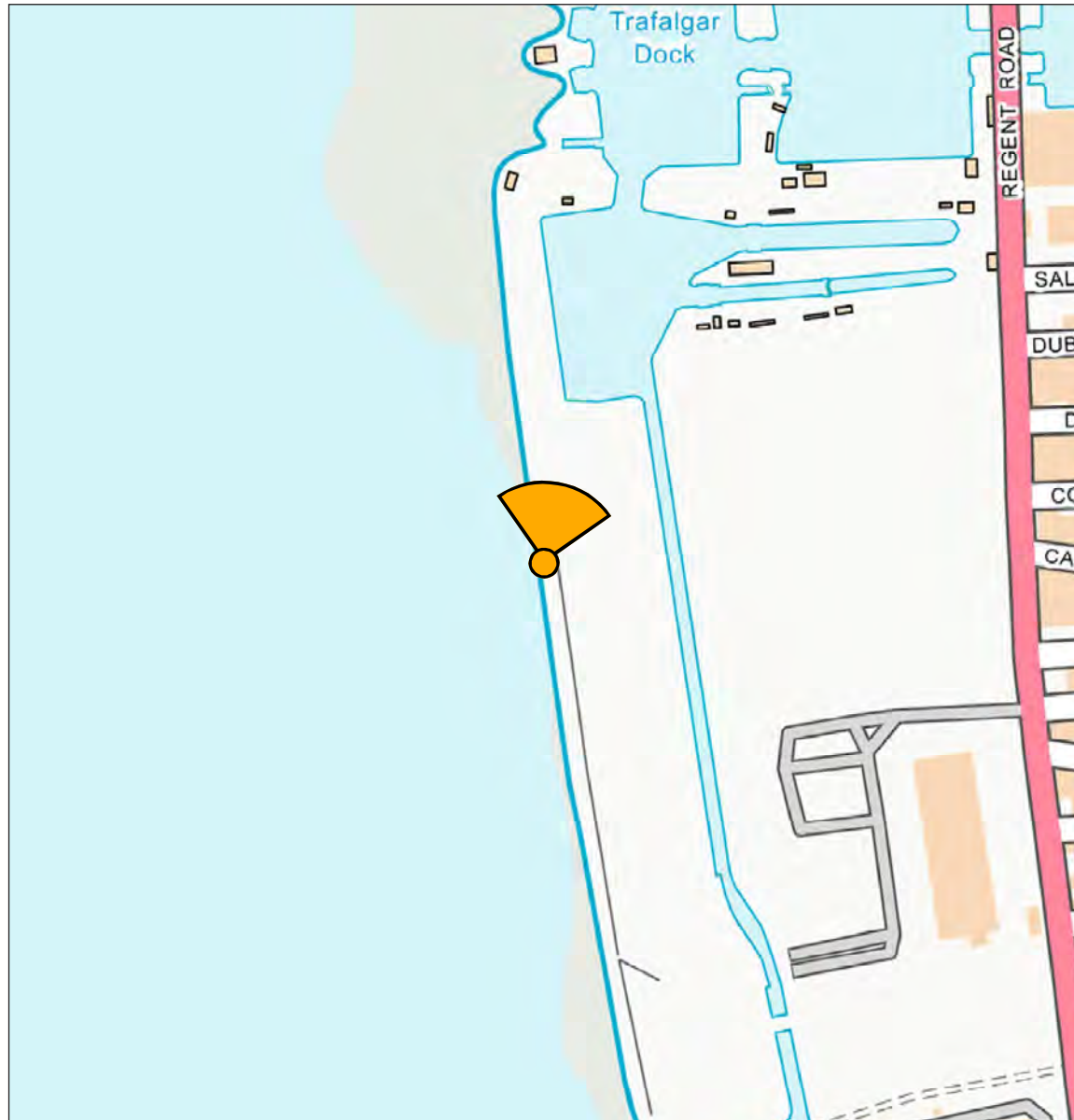
Project no. A100795  
The People's Project

August 2020

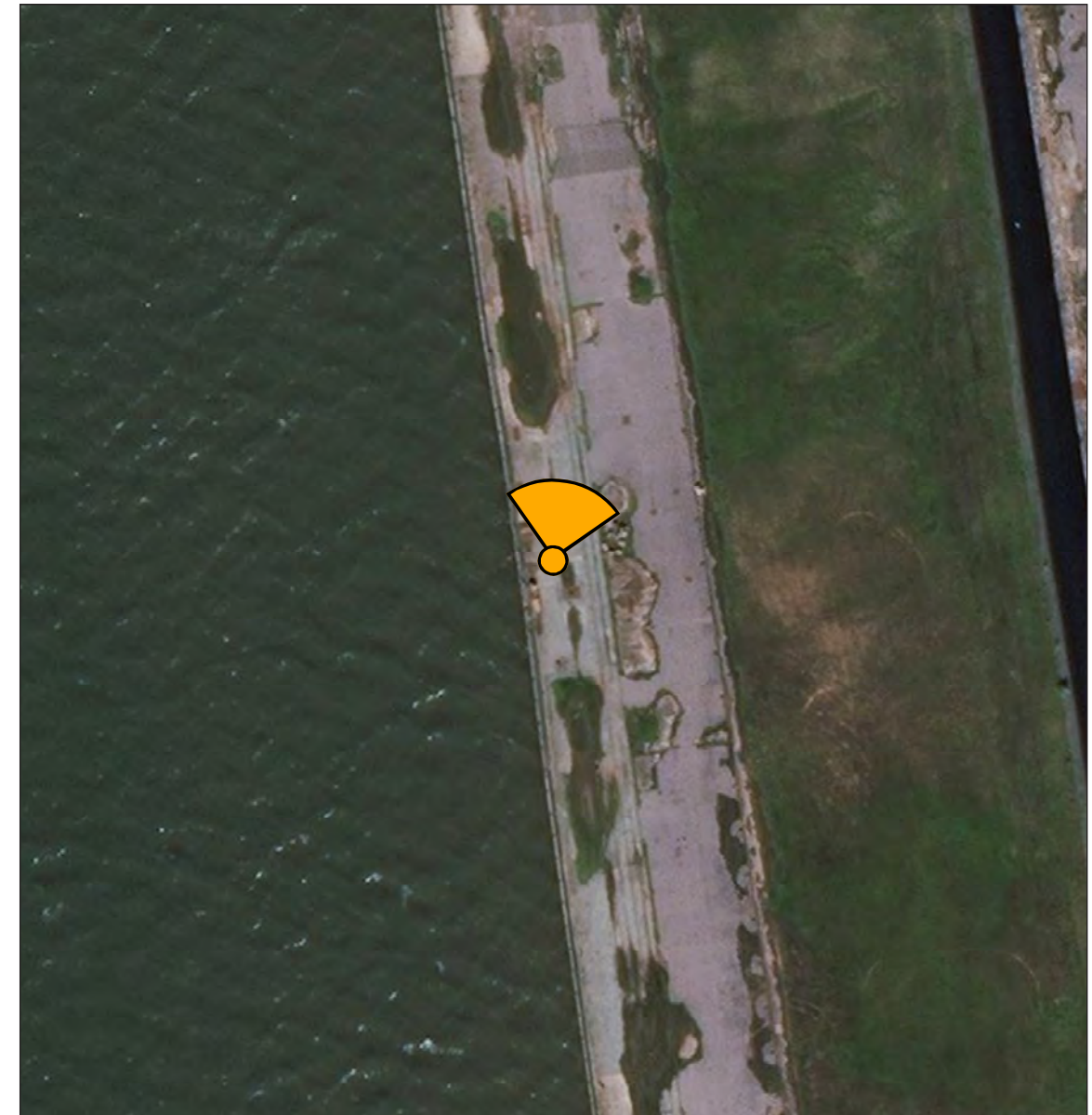
Everton Stadium  
Development  
Limited







Scale 1:5,000



Scale 1:1,250

**Viewpoint 26A:** View looking north-east from dock area south-west of Trafalgar Dock (and west of canal) (Night-time location)

**Viewpoint information:**

OS reference: 333315, 391764.25  
 Ground level: 6.9m AOD  
 Direction of view: 10°  
 Distance to site: 595m

© Crown copyright and database rights 2020 Ordnance Survey 0100031673.  
 Aerial Source: Esri, DigitalGlobe, GeoEye, Earthstar Geographics, CNES/Airbus DS,  
 USDA, USGS, AeroGRID, IGN, and the GIS User Community.

**Viewpoint Photographs &  
 Accurate Visual Representations**

**LA.35.00**

**Project no. A100795**  
 The People's Project

**August 2020**

**Everton Stadium  
 Development  
 Limited**







Baseline Night-time Photograph

View flat at a comfortable arm's length





Type 4 Visualisation - Night-time Photomontage (event night)

View flat at a comfortable arm's length

<b>Viewpoint information:</b>			
OS reference:	333315, 391764.25	Horizontal field of view:	90° (cylindrical projection)
Ground level:	6.9m AOD	Vertical field of view:	27°
Direction of view:	10°	Enlargement factor:	96%
Distance to site:	595m	Principal distance:	812.5mm
		Paper size:	840 x 297mm (extended A3)
		Correct printed image size:	820 x 250mm
		Camera:	EOS 5D Mk III
		Lens:	50mm (Canon EF 50mm f/1.8 II)
		Camera height:	1.6m AGL
		Date and time:	14/03/18 20:20

**Viewpoint 26A:** View looking north-east from dock area south-west of Trafalgar Dock (and west of canal) (Night-time location)

<b>Revision</b>		
A	Lighting column locations amended	28/01/20
B	Sheet layout updated, photomontage updated for revised stadium design	12/08/20
C	Updated to include additional wind mitigation structures	22/10/20

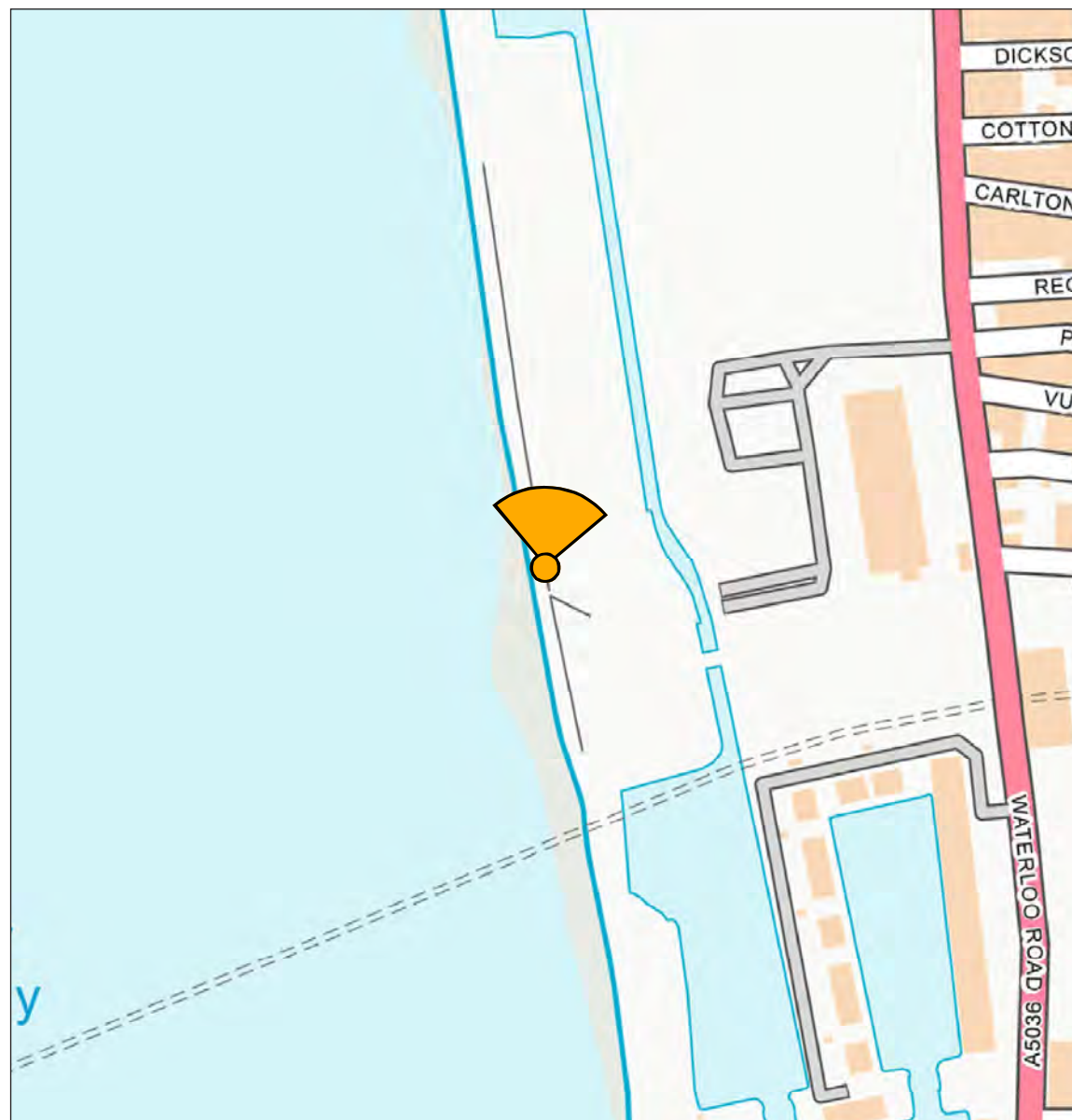
**Viewpoint Photographs &  
Accurate Visual Representations**

LA.35.5[c]

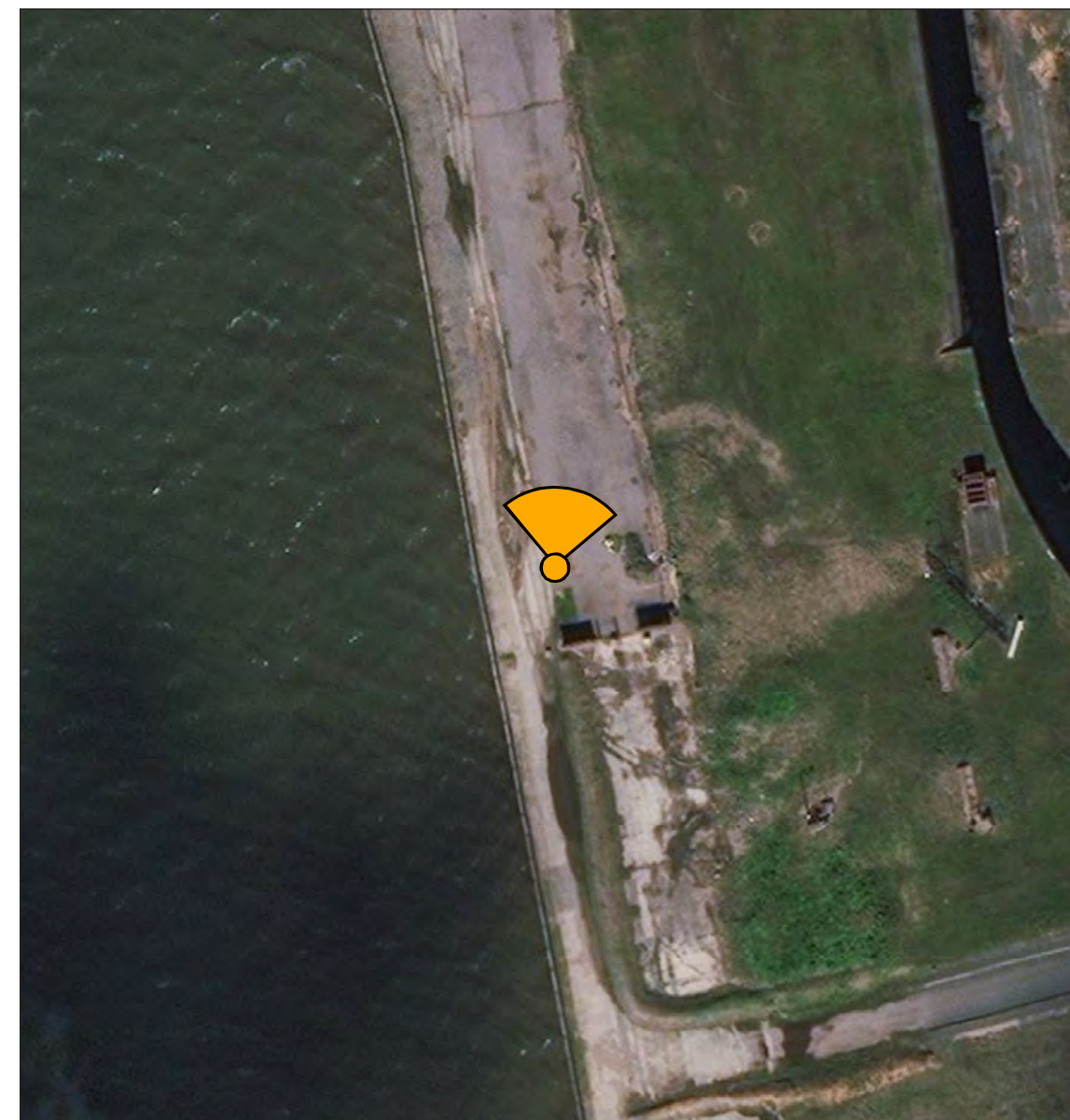
Project no. A100795  
The People's Project

August 2020





Scale 1:5,000



Scale 1:1,250

**Viewpoint 27:** View looking north-east from road over canal (south-west of Trafalger Dock)

**Viewpoint information:**

OS reference: 333362.25, 391516.75

Ground level: 6.6m AOD

Direction of view: 5°

Distance to site: 845m

© Crown copyright and database rights 2020 Ordnance Survey 0100031673.  
Aerial Source: Esri, DigitalGlobe, GeoEye, Earthstar Geographics, CNES/Airbus DS,  
USDA, USGS, AeroGRID, IGN, and the GIS User Community.





Baseline Photograph

View flat at a comfortable arm's length

**Viewpoint information:**

OS reference: 333362.25, 391516.75  
Ground level: 6.6m AOD  
Direction of view: 5°  
Distance to site: 845m

Horizontal field of view: 90° (cylindrical projection)  
Vertical field of view: 27°  
Enlargement factor: 96%  
Principal distance: 812.5mm  
Paper size: 840 x 297mm (extended A3)

Correct printed image size: 820 x 250mm  
Camera: EOS 6D Mk II  
Lens: 50mm (Canon EF 24-70mm f/4 IS USM)  
Camera height: 1.6m AGL  
Date and time: 12/09/19 12:51

**Viewpoint 27:** View looking north-east from road over canal (south-west of Trafalger Dock)

**Revision**  
A Sheet layout updated

12/08/20

**Viewpoint Photographs &  
Accurate Visual Representations**

LA.36.1 [B]

Project no. A100795  
The People's Project

August 2020

Everton Stadium  
Development  
Limited







Type 4 Visualisation - Photomontage

View flat at a comfortable arm's length

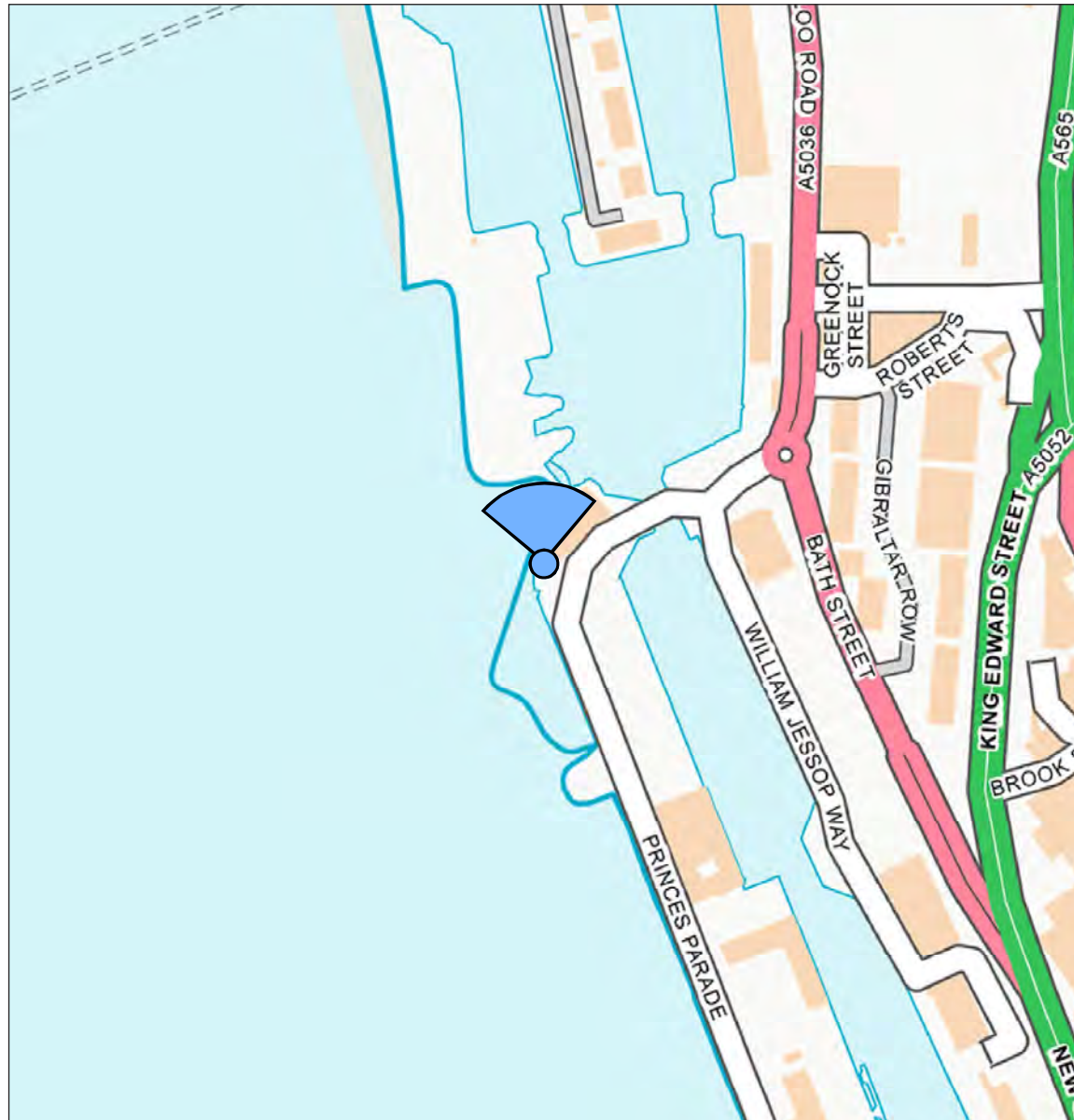




Type 4 Visualisation - Cumulative Photomontage

View flat at a comfortable arm's length



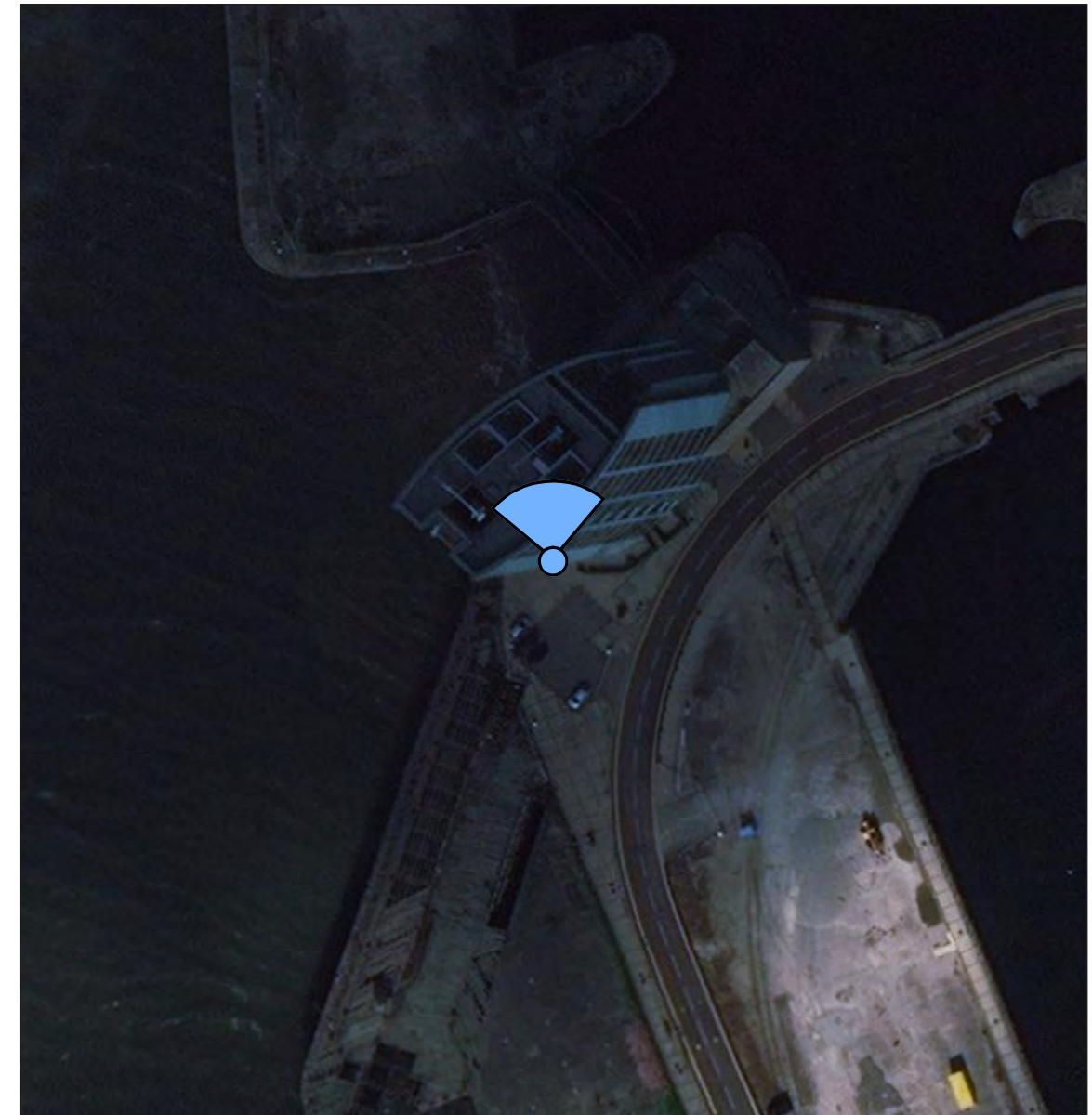


Scale 1:5,000

**Viewpoint 28:** View looking north-east from outside Alexandra Tower (off Princes Parade)

**Viewpoint information:**

OS reference: 333513.25, 390931.5  
 Ground level: 7.8m AOD  
 Direction of view: 355°  
 Distance to site: 1435m



Scale 1:1,250

© Crown copyright and database rights 2020 Ordnance Survey 0100031673.  
 Aerial Source: Esri, DigitalGlobe, GeoEye, Earthstar Geographics, CNES/Airbus DS,  
 USDA, USGS, AeroGRID, IGN, and the GIS User Community.

**Viewpoint Photographs &  
 Accurate Visual Representations**

**LA.37.0**

**Project no. A100795**  
 The People's Project

**August 2020**

**Everton Stadium  
 Development  
 Limited**







Baseline Photograph

View flat at a comfortable arm's length

<b>Viewpoint information:</b>		Horizontal field of view:	90° (cylindrical projection)	Correct printed image size:	820 x 250mm
OS reference:	333513.25, 390931.5	Vertical field of view:	27°	Camera:	EOS 6D Mk II
Ground level:	7.8m AOD	Enlargement factor:	96%	Lens:	50mm (Canon EF 24-70mm f/4 IS USM)
Direction of view:	355°	Principal distance:	812.5mm	Camera height:	1.6m AGL
Distance to site:	1435m	Paper size:	840 x 297mm (extended A3)	Date and time:	04/09/19 16:32

**Viewpoint 28:** View looking north-east from outside Alexandra Tower (off Princes Parade)

<b>Revision</b>	
A	Sheet layout updated

12/08/20

**Viewpoint Photographs &  
Accurate Visual Representations**

LA.37.1 [A]

Project no. A100795  
The People's Project

August 2020

**Everton Stadium  
Development  
Limited**



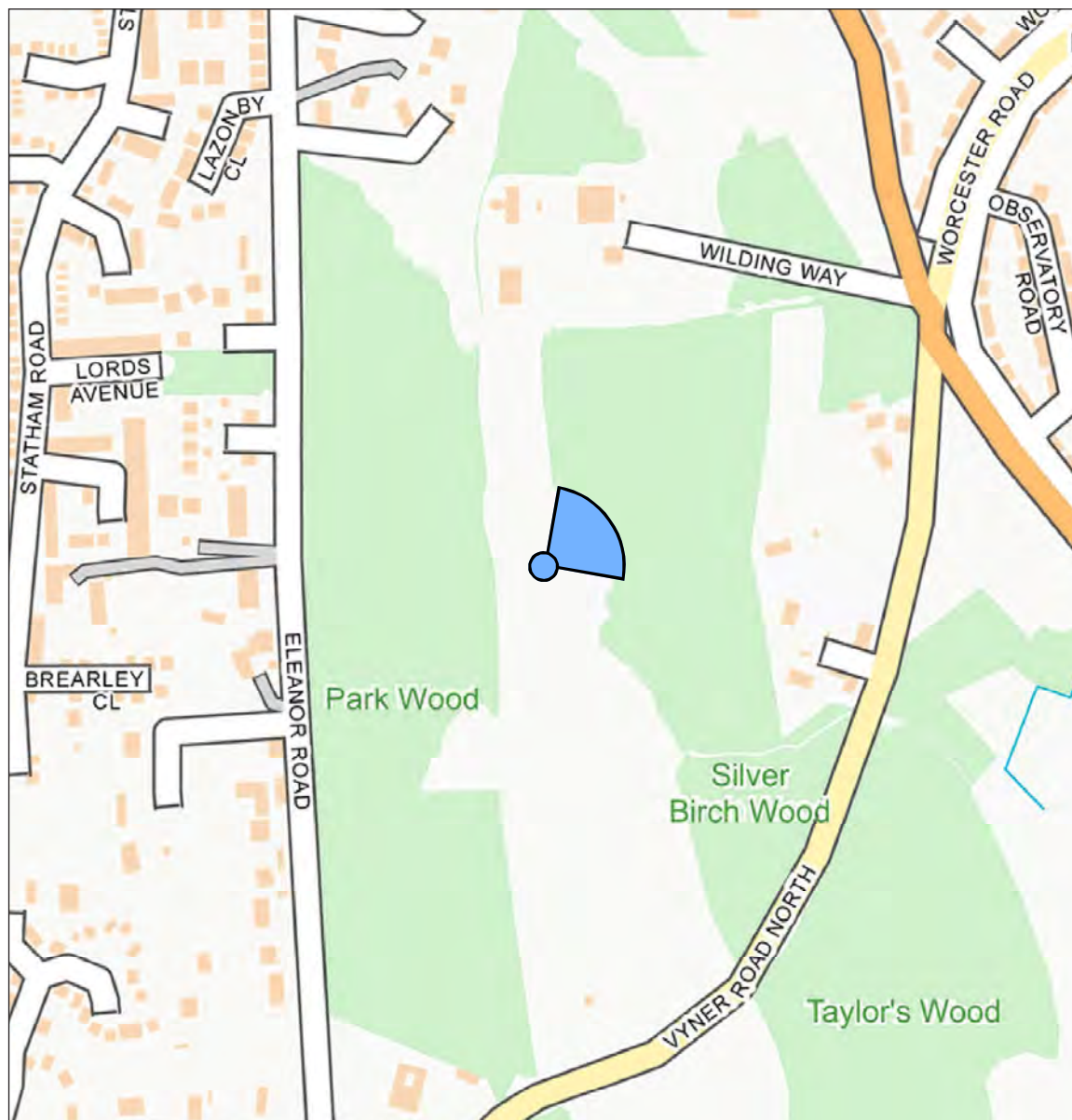




Type 4 Visualisation - Photowire

View flat at a comfortable arm's length





Scale 1:5,000

**Viewpoint 29:** View looking north-east from Bidston Hill

**Viewpoint information:**

OS reference: 328695.5, 389658.5

Ground level: 67.0m AOD

Direction of view: 55°

Distance to site: 5300m



Scale 1:1,250

© Crown copyright and database rights 2020 Ordnance Survey 0100031673.  
Aerial Source: Esri, DigitalGlobe, GeoEye, Earthstar Geographics, CNES/Airbus DS,  
USDA, USGS, AeroGRID, IGN, and the GIS User Community.

**Viewpoint Photographs &  
Accurate Visual Representations**

**LA.38.0**

**Project no. A100795**  
The People's Project

**August 2020**

**Everton Stadium  
Development  
Limited**







**Viewpoint information:**

OS reference: 328695.5, 389658.5  
Ground level: 67.0m AOD  
Direction of view: 55°  
Distance to site: 5300m

Horizontal field of view: 90° (cylindrical projection)  
Vertical field of view: 27°  
Enlargement factor: 96%  
Principal distance: 812.5mm  
Paper size: 840 x 297mm (extended A3)

Correct printed image size: 820 x 250mm  
Camera: EOS 5D Mark III  
Lens: 50mm (Canon EF 50mm f/1.4 USM)  
Camera height: 1.6m AGL  
Date and time: 25/07/19 09:04

**Viewpoint 29:** View looking north-east from Bidston Hill

**Revision**  
A Sheet layout updated

12/08/20

**Viewpoint Photographs &  
Accurate Visual Representations**

LA.38.1 [A]

Project no. A100795  
The People's Project

August 2020

Everton Stadium  
Development  
Limited







Type 4 Visualisation - Photowire

View flat at a comfortable arm's length