



Baseline Photograph

View flat at a comfortable arm’s length

Viewpoint information:	Horizontal field of view:	90° (cylindrical projection)	Correct printed image size:	820 x 250mm
OS reference: 332545.5, 390861.5	Vertical field of view:	27°	Camera:	EOS 5D Mark III
Ground level: 7.2m AOD	Enlargement factor:	96%	Lens:	50mm (Canon EF 50mm f/1.4 USM)
Direction of view: 25°	Principal distance:	812.5mm	Camera height:	1.6m AGL
Distance to site: 1660m	Paper size:	840 x 297mm (extended A3)	Date and time:	24/07/19 15:40

Viewpoint 22: View looking north-east from Seacombe Ferry Terminal across the River Mersey

Revision	
A	Sheet layout updated
	12/08/20

**Viewpoint Photographs &
Accurate Visual Representations**

LA.31.1 [A]

Project no. A100795
The People's Project

August 2020





Scale 1:5,000



Scale 1:1,250

Viewpoint 23: View looking north-east from Wallasey Town Hall across the River Mersey

Viewpoint information:

OS reference: 332164.75, 391526
 Ground level: 6.6m AOD
 Direction of view: 50°
 Distance to site: 1375m

© Crown copyright and database rights 2020 Ordnance Survey 0100031673.
 Aerial Source: Esri, DigitalGlobe, GeoEye, Earthstar Geographics, CNES/Airbus DS,
 USDA, USGS, AeroGRID, IGN, and the GIS User Community.



Baseline Photograph

View flat at a comfortable arm's length

Viewpoint information:		Horizontal field of view:	90° (cylindrical projection)	Correct printed image size:	820 x 250mm
OS reference:	332164.75, 391526	Vertical field of view:	27°	Camera:	EOS 5D Mark III
Ground level:	6.6m AOD	Enlargement factor:	96%	Lens:	50mm (Canon EF 50mm f/1.4 USM)
Direction of view:	50°	Principal distance:	812.5mm	Camera height:	1.6m AGL
Distance to site:	1375m	Paper size:	840 x 297mm (extended A3)	Date and time:	24/07/19 16:12

Viewpoint 23: View looking north-east from Wallasey Town Hall across the River Mersey

Revision	
A	Sheet layout updated
	12/08/20

**Viewpoint Photographs &
Accurate Visual Representations**

LA.32.1 [A]

Project no. A100795
The People's Project

August 2020



Type 4 Visualisation - Photomontage

View flat at a comfortable arm's length

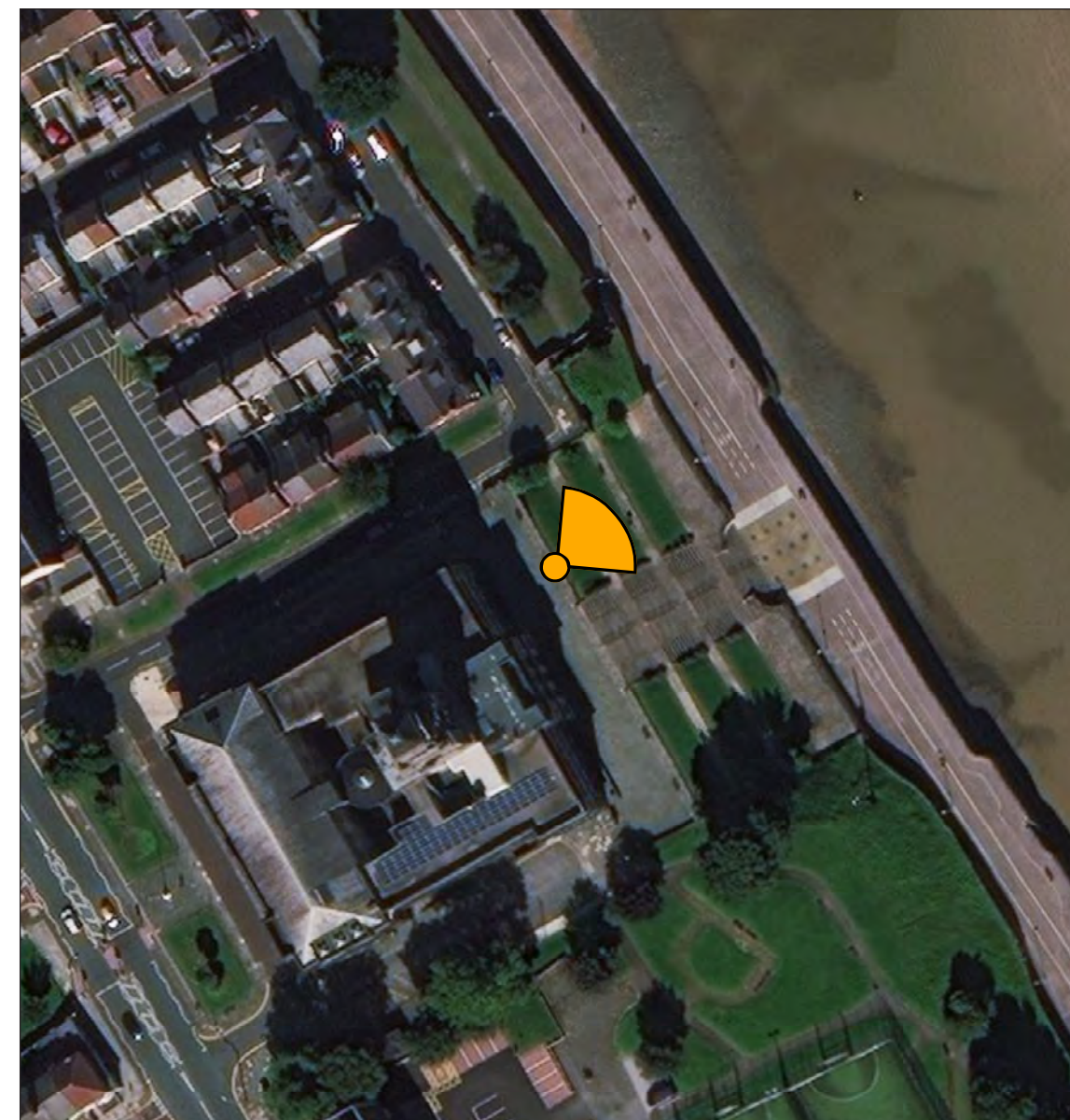


Type 4 Visualisation - Cumulative Photomontage

View flat at a comfortable arm's length



Scale 1:5,000



Scale 1:1,250

Viewpoint 23A: View looking north-east from Wallasey Town Hall across the River Mersey (Night-time location)

Viewpoint information:

OS reference: 332126.5, 391523.5
 Ground level: 16m AOD
 Direction of view: 50°
 Distance to site: 1405m

© Crown copyright and database rights 2020 Ordnance Survey 0100031673.
 Aerial Source: Esri, DigitalGlobe, GeoEye, Earthstar Geographics, CNES/Airbus DS,
 USDA, USGS, AeroGRID, IGN, and the GIS User Community.



Baseline Night-time Photograph

View flat at a comfortable arm's length

Viewpoint information:		Horizontal field of view:	90° (cylindrical projection)	Correct printed image size:	820 x 250mm
OS reference:	332126.5, 391523.5	Vertical field of view:	27°	Camera:	EOS 5D Mk III
Ground level:	16m AOD	Enlargement factor:	96%	Lens:	50mm (Canon EF 50mm f/1.8 II)
Direction of view:	50°	Principal distance:	812.5mm	Camera height:	1.6m AGL
Distance to site:	1405m	Paper size:	840 x 297mm (extended A3)	Date and time:	13/03/18 20:18

Viewpoint 23A: View looking north-east from Wallasey Town Hall across the River Mersey

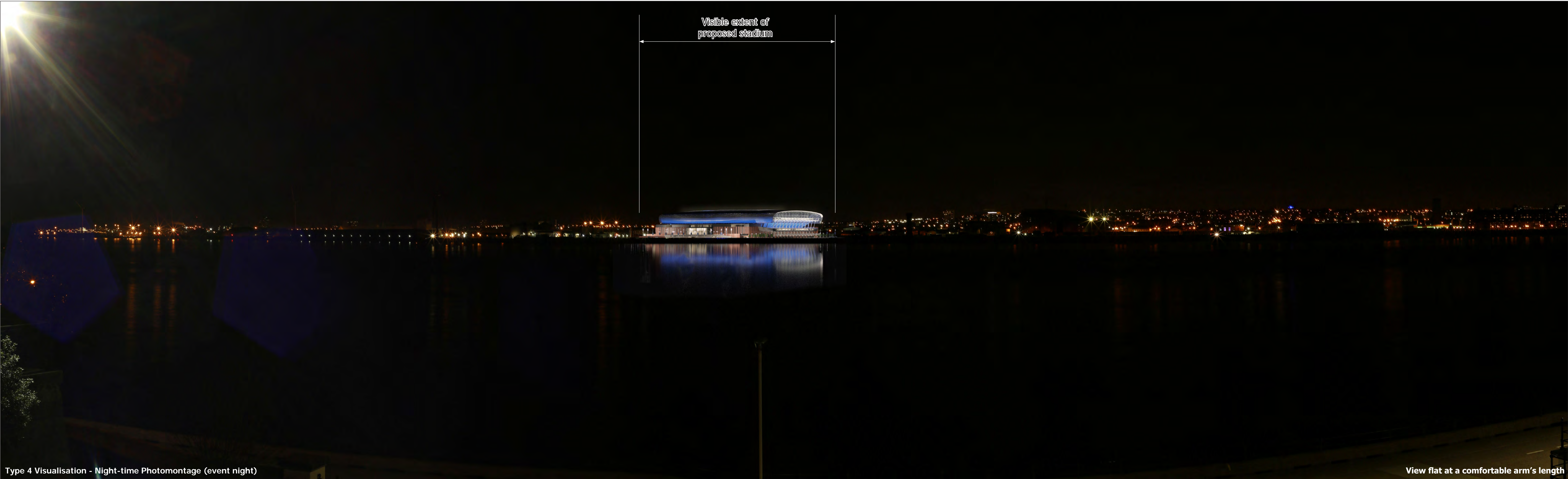
Revision		
A	Sheet layout updated	12/08/20

**Viewpoint Photographs &
Accurate Visual Representations**

LA.32.4[A]

Project no. A100795
The People's Project

August 2020



Type 4 Visualisation - Night-time Photomontage (event night)

View flat at a comfortable arm’s length

Viewpoint information:		Horizontal field of view:	90° (cylindrical projection)
OS reference:	332126.5, 391523.5	Vertical field of view:	27°
Ground level:	16m AOD	Enlargement factor:	96%
Direction of view:	50°	Principal distance:	812.5mm
Distance to site:	1405m	Paper size:	840 x 297mm (extended A3)
		Correct printed image size:	820 x 250mm
		Camera:	EOS 5D Mk III
		Lens:	50mm (Canon EF 50mm f/1.8 II)
		Camera height:	1.6m AGL
		Date and time:	13/03/18 20:18

Viewpoint 23A: View looking north-east from Wallasey Town Hall across the River Mersey

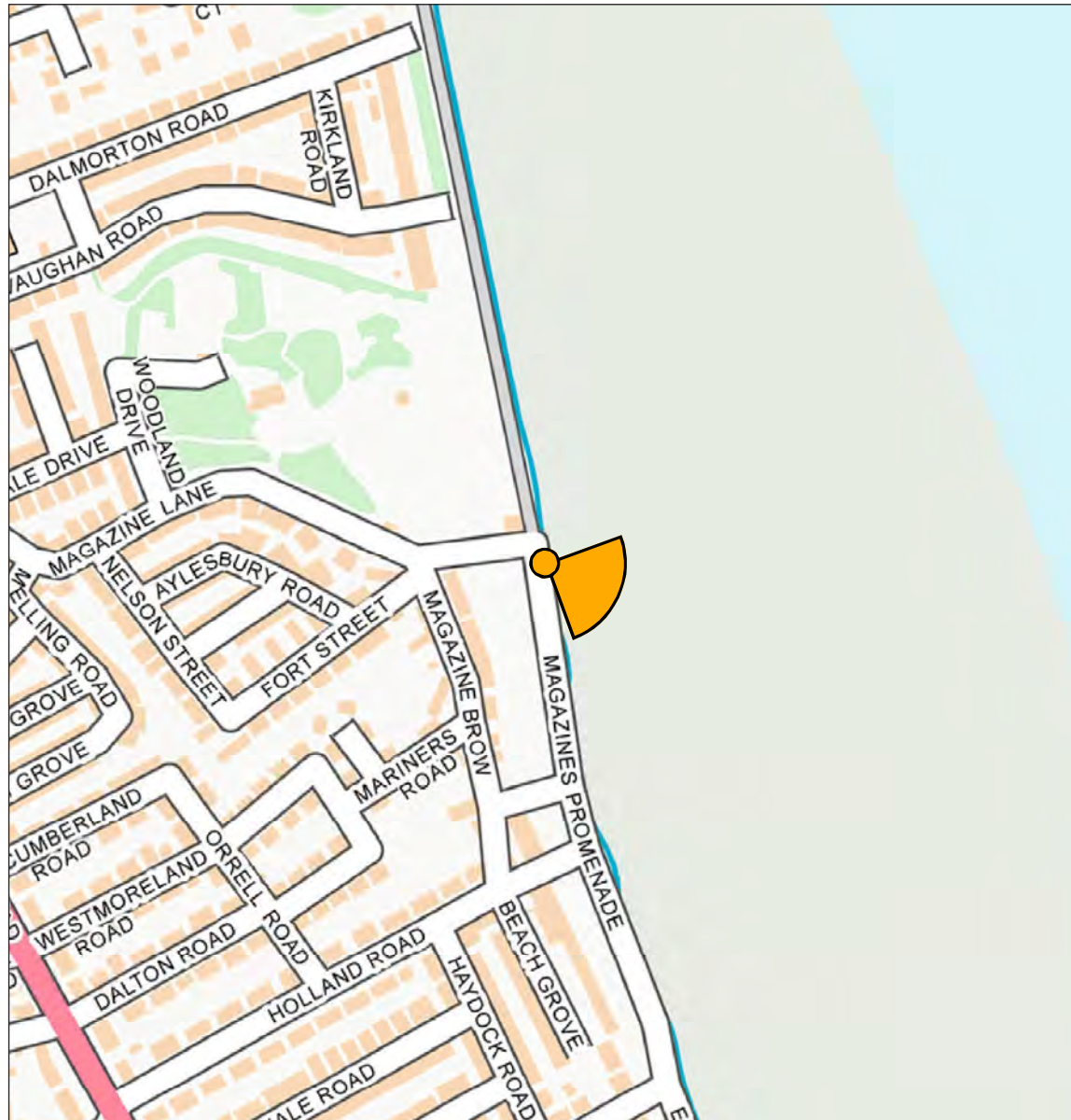
Revision		
A	Sheet layout updated, photomontage updated for revised stadium design	12/08/20
B	Updated to include additional wind mitigation structures	22/10/20

**Viewpoint Photographs &
Accurate Visual Representations**

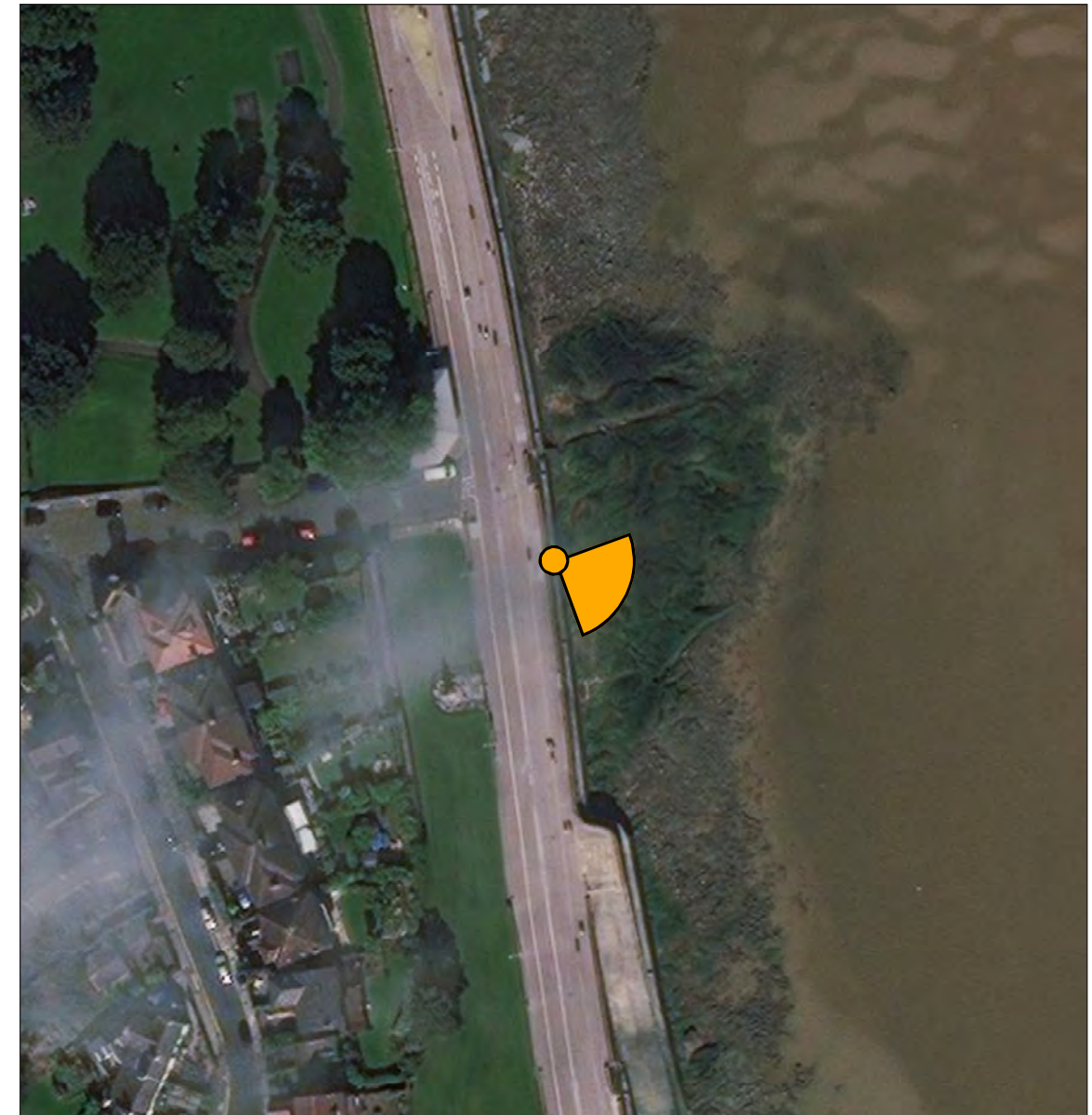
LA.32.5[B]

Project no. A100795
The People's Project

August 2020



Scale 1:5,000



Scale 1:1,250

Viewpoint 24: View looking south-east from Magazine Promenade across the River Mersey

Viewpoint information:

OS reference: 331451.5, 393346.5
 Ground level: 7.0m AOD
 Direction of view: 115°
 Distance to site: 1970m

© Crown copyright and database rights 2020 Ordnance Survey 0100031673.
 Aerial Source: Esri, DigitalGlobe, GeoEye, Earthstar Geographics, CNES/Airbus DS,
 USDA, USGS, AeroGRID, IGN, and the GIS User Community.



Baseline Photograph

View flat at a comfortable arm's length

Viewpoint information:		Horizontal field of view:	90° (cylindrical projection)	Correct printed image size:	820 x 250mm
OS reference:	331451.5, 393346.5	Vertical field of view:	27°	Camera:	EOS 5D Mark III
Ground level:	7.0m AOD	Enlargement factor:	96%	Lens:	50mm (Canon EF 50mm f/1.4 USM)
Direction of view:	115°	Principal distance:	812.5mm	Camera height:	1.6m AGL
Distance to site:	1970m	Paper size:	840 x 297mm (extended A3)	Date and time:	24/07/19 17:43

Viewpoint 24: View looking south-east from Magazine Promenade across the River Mersey

Revision	
A	Sheet layout updated
	12/08/20

**Viewpoint Photographs &
Accurate Visual Representations**

LA.33.1 [A]

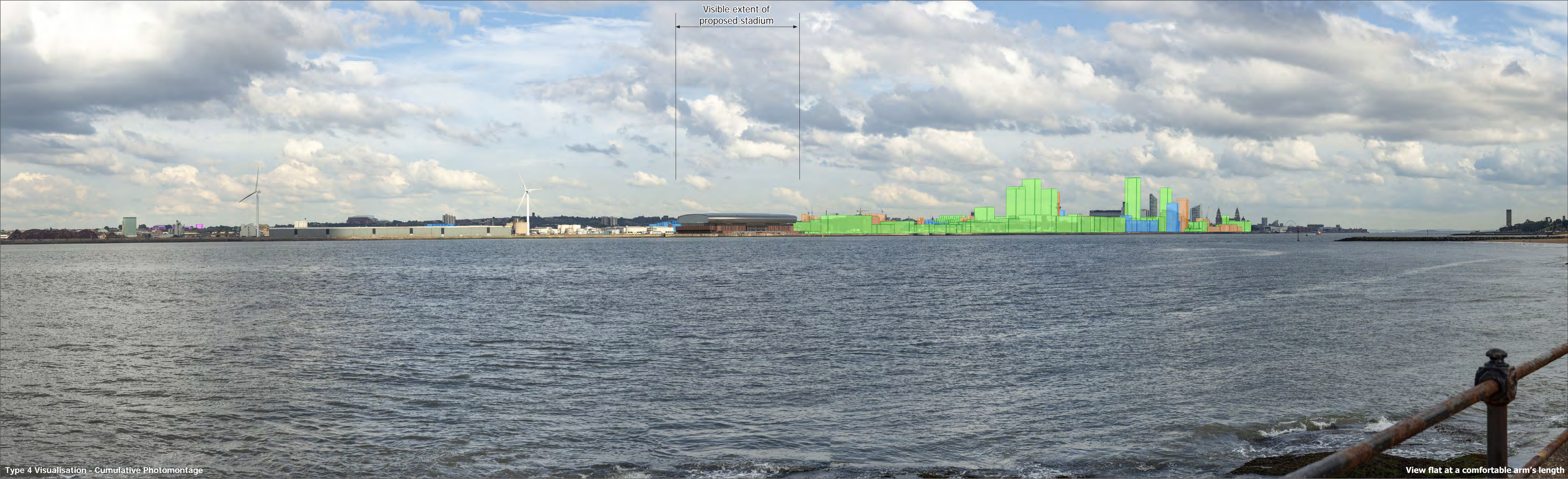
Project no. **A100795**
The People's Project

August 2020



Type 4 Visualisation - Photomontage

View flat at a comfortable arm's length



Type 4 Visualisation - Cumulative Photomontage

View flat at a comfortable arm's length





Type 4 Visualisation - Night-time Photomontage (event night)

View flat at a comfortable arm's length

Viewpoint information:		Horizontal field of view:	90° (cylindrical projection)
OS reference:	331451.5, 393346.5	Vertical field of view:	27°
Ground level:	7.0m AOD	Enlargement factor:	96%
Direction of view:	115°	Principal distance:	812.5mm
Distance to site:	1970m	Paper size:	840 x 297mm (extended A3)
		Correct printed image size:	820 x 250mm
		Camera:	EOS 5D Mk III
		Lens:	50mm (Canon EF 50mm f/1.8 II)
		Camera height:	1.6m AGL
		Date and time:	13/03/18 19:56

Viewpoint 24: View looking south-east from Magazine Promenade across the River Mersey

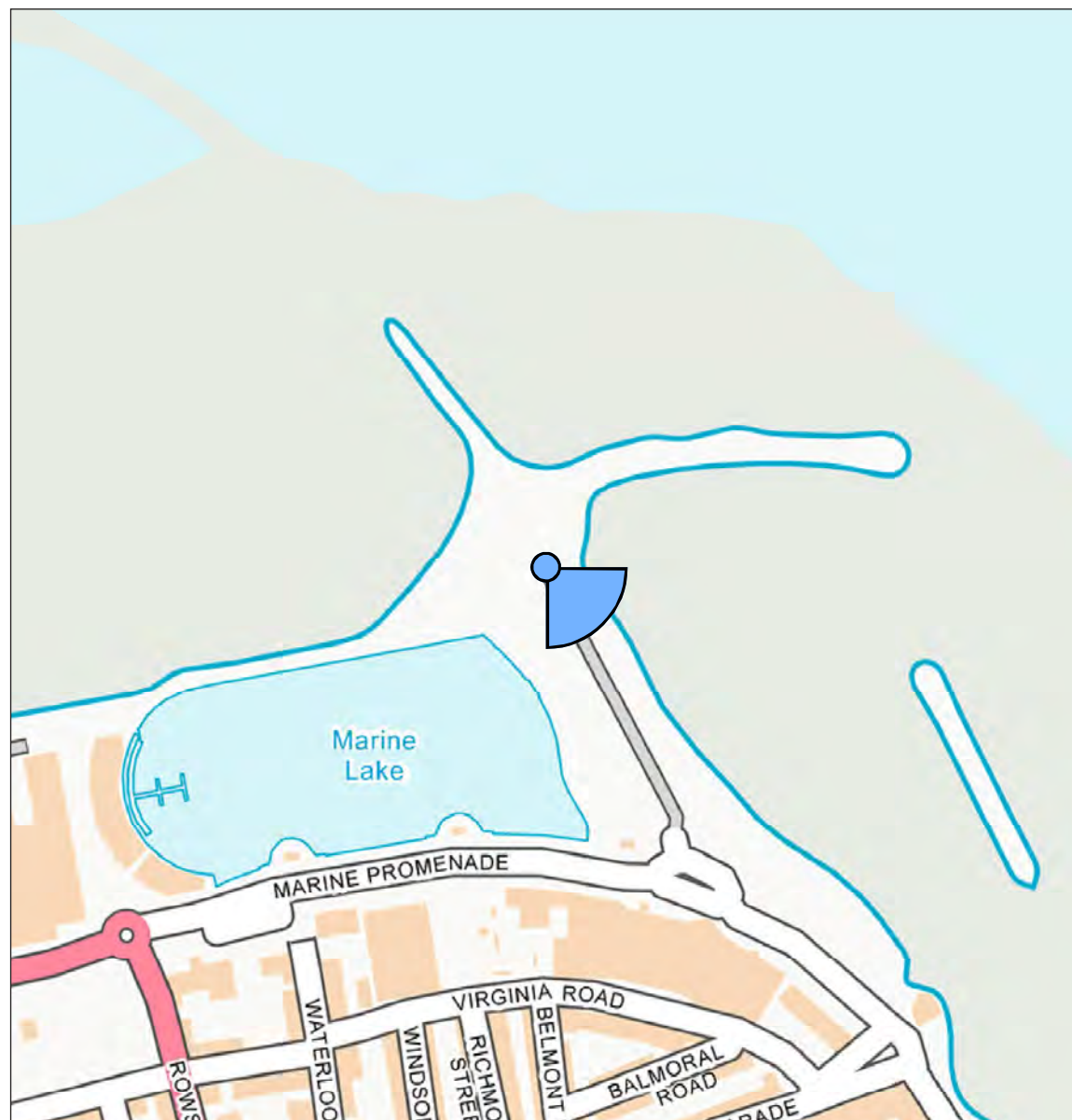
Revision		
A	Sheet layout updated, photomontage updated for revised stadium design	12/08/20
B	Updated to include additional wind mitigation structures	22/10/20

Viewpoint Photographs &
Accurate Visual Representations

LA.33.5[B]

Project no. A100795
The People's Project

August 2020



Scale 1:5,000

Viewpoint 25: View looking south-east from Fort Perch Rock across the River Mersey

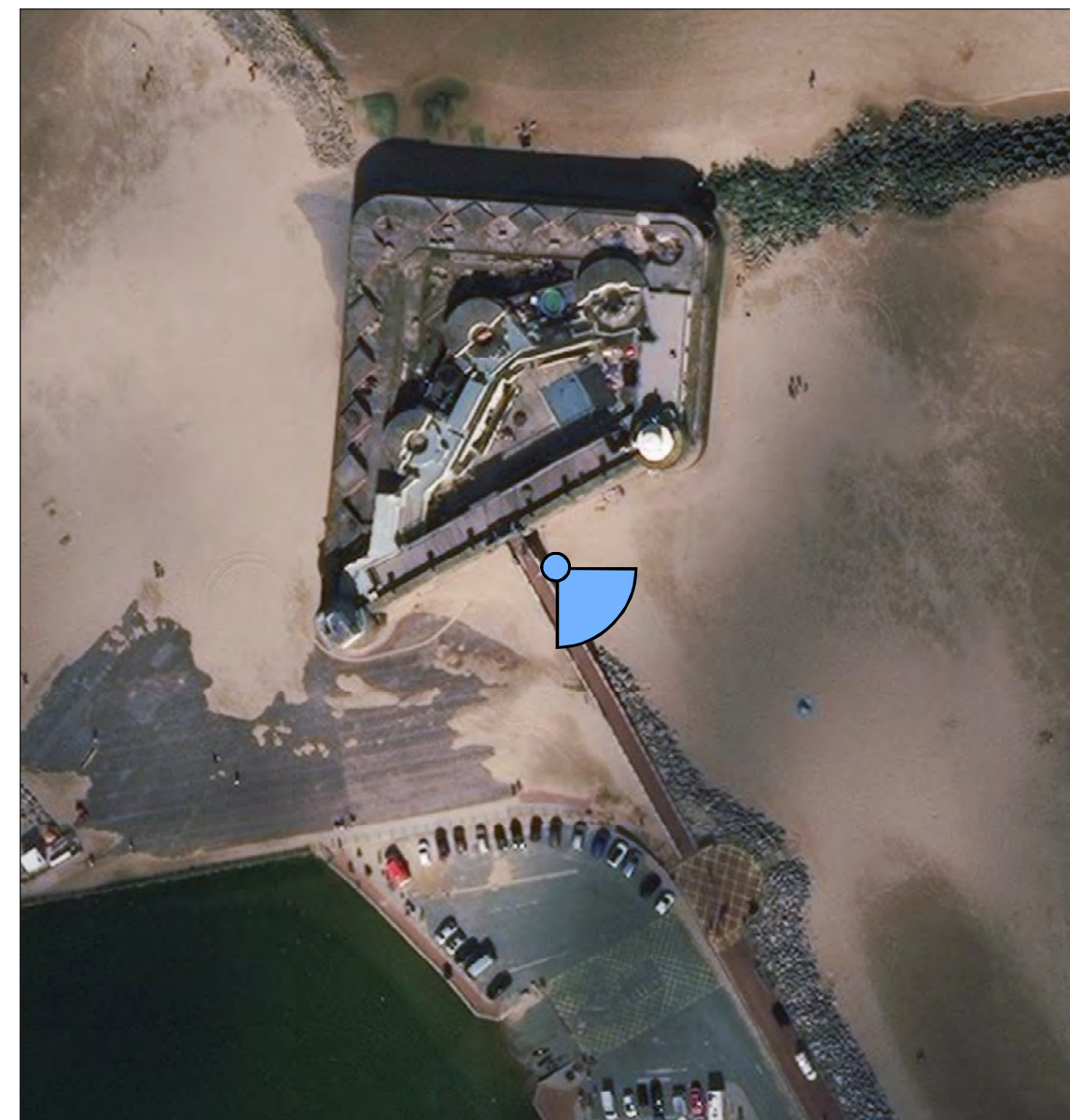
Viewpoint information:

OS reference: 330968.25, 394452.75

Ground level: 4.8m AOD

Direction of view: 135°

Distance to site: 2970m



Scale 1:1,250

© Crown copyright and database rights 2020 Ordnance Survey 0100031673.
Aerial Source: Esri, DigitalGlobe, GeoEye, Earthstar Geographics, CNES/Airbus DS,
USDA, USGS, AeroGRID, IGN, and the GIS User Community.

**Viewpoint Photographs &
Accurate Visual Representations**

LA.34.0

Project no. A100795
The People's Project

August 2020

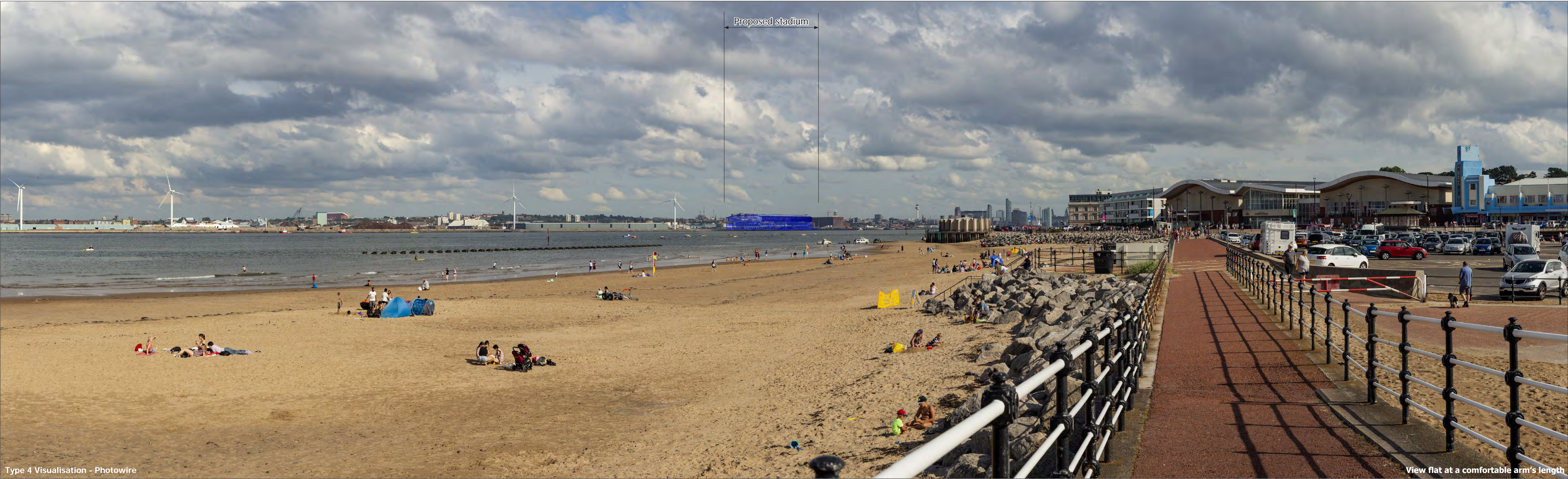
**Everton Stadium
Development
Limited**





Baseline Photograph

View flat at a comfortable arm's length



Type 4 Visualisation - Photowire

View flat at a comfortable arm's length