

Revisions

Rev	Date	Description
A	JUN 16	ROOF PARAPET OMITTED

BUILDING MANAGEMENT SERVICES LTD

Huddersfield Road
 Elland, West Yorkshire
 HX5 9BW
 TELEPHONE: ELLAND (01422) 371616
 FAX No: (01422) 376717
 email: mail@bmselland.com

**Building
 Management
 Services**

Client



Commercial Development Projects Limited

Project

Proposed Industrial Units - Phase .2.
 Liverpool Business Park,
 Liverpool

Sheet

Unit 2 - Proposed Elevations

Drawn	ndj	Date	may 2016
Scale	1:125 @ A0		
Status	PLANNING		
Drawing No.	M2987-2-02	Revision	REV A

EXTERNAL MATERIALS :-

1. Kingspan KS1000MR - Micro -rib composite panels , colour :- Alaska Grey .
2. Horizontal Euroclad half round cladding ,colour :- Grey Aluminium RAL 9007 .
3. Horizontal Euroclad half round cladding ,colour :- Metallic Silver Ral 9006 .
4. Kingspan KS1000MR - Micro -rib composite panels laid vertically in various lengths , colours :- Metallic Silver RAL 9006, Jet, RAL 9005, Diamond RAL 9023 & Pearl RAL 9010 .
5. Kingspan Optimo flat panels , colour :- Metallic Silver RAL 9006 .

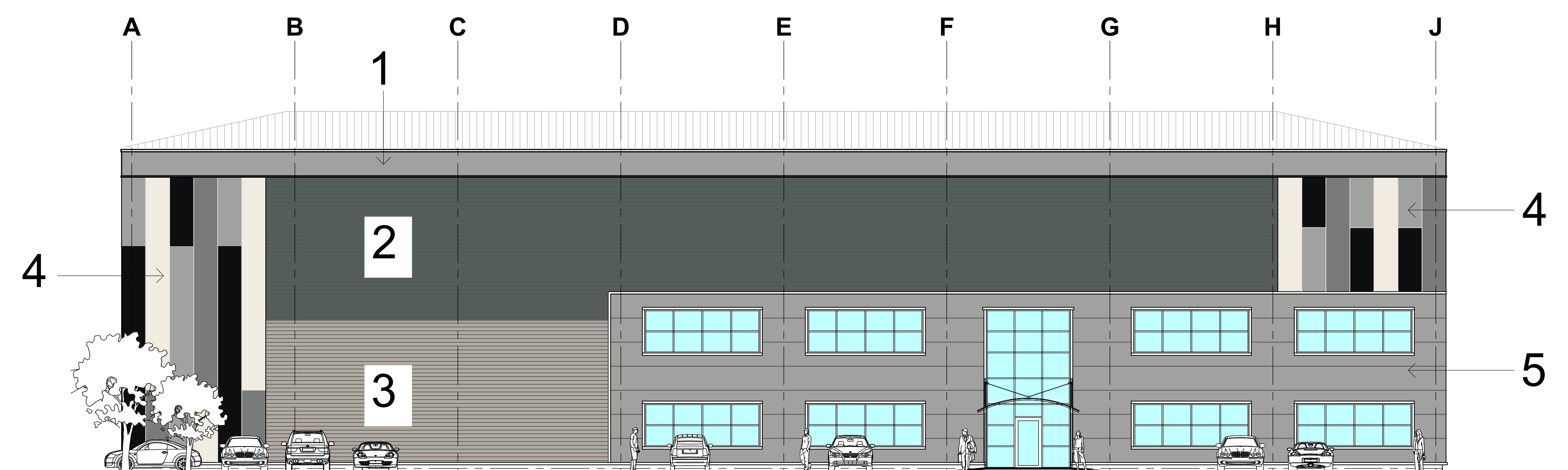
All flashings to be contrasting black .

Doors / windows are to be RAL 9007 .

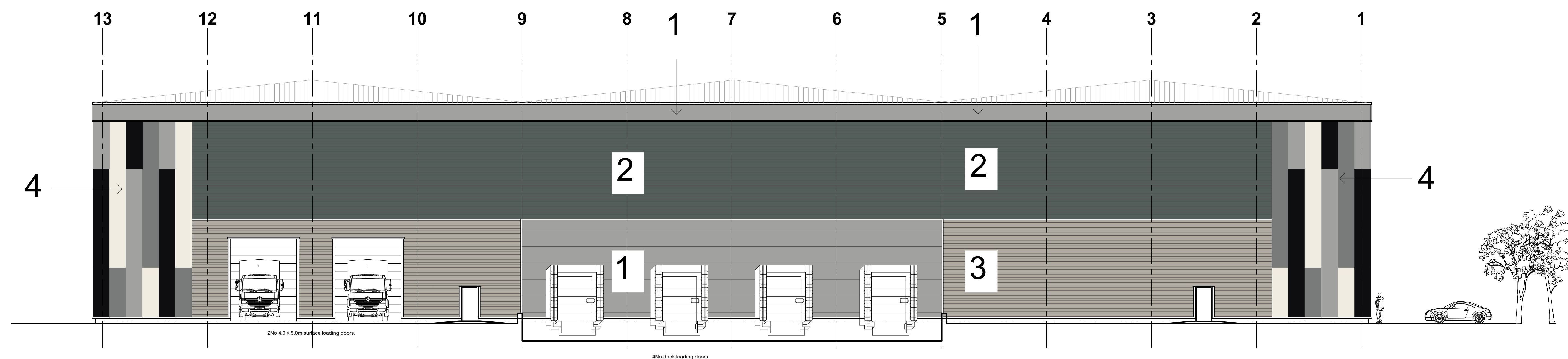
Office fascia to be Alaska Grey composite with black flashings .

Office brickwork to be Ibstock 65mm Atlas smooth blue with black colourd mortar .

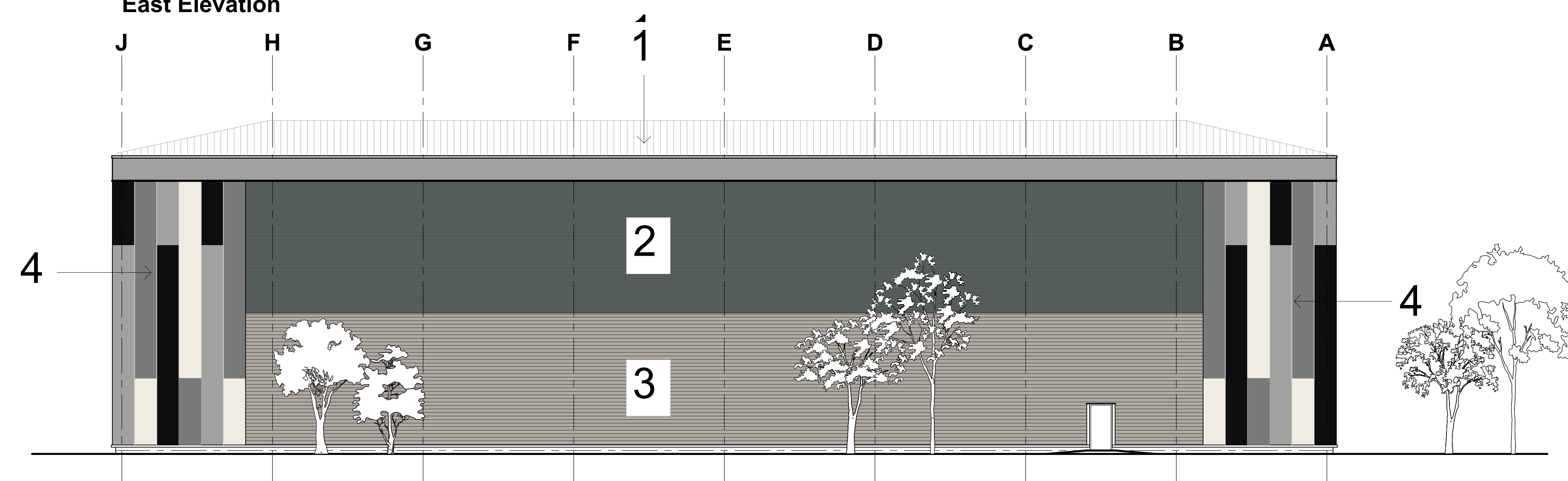
Colours & finishes to be agreed with Local Authority .



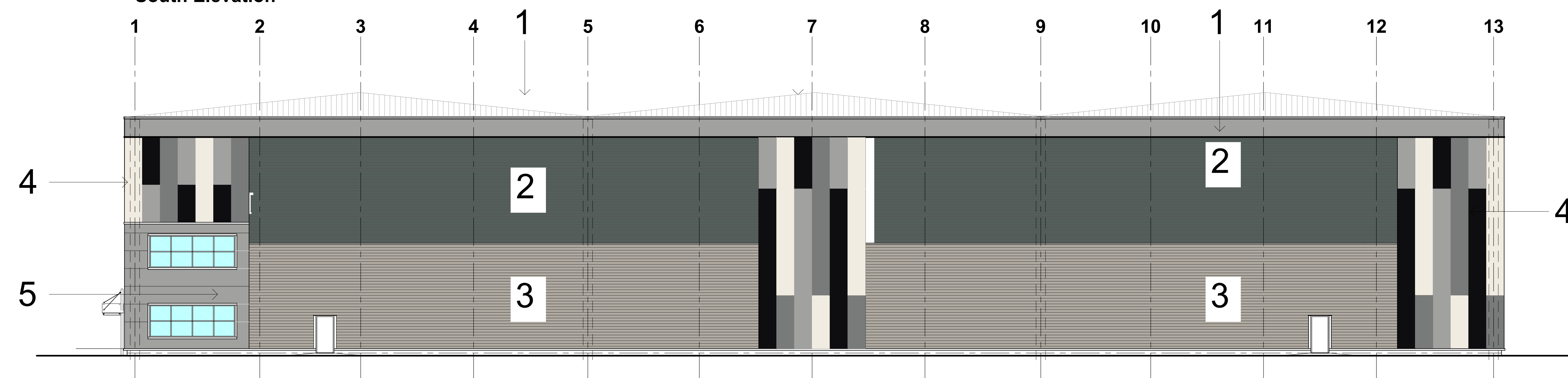
North Elevation



East Elevation



South Elevation



West Elevation

Unit .2. - Elevations

Liverpool Business Park