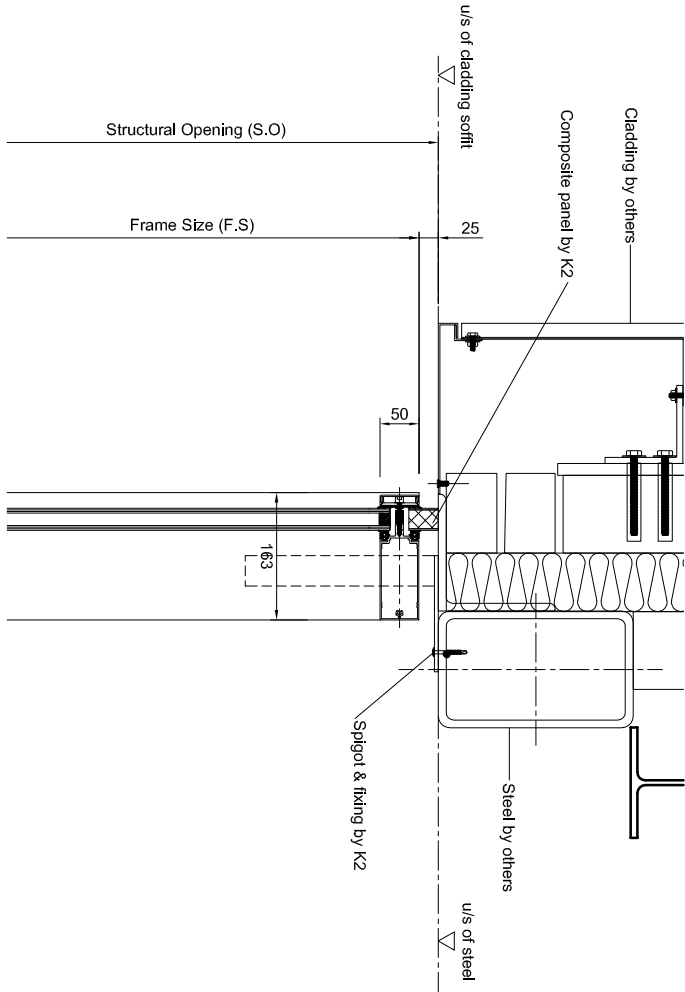
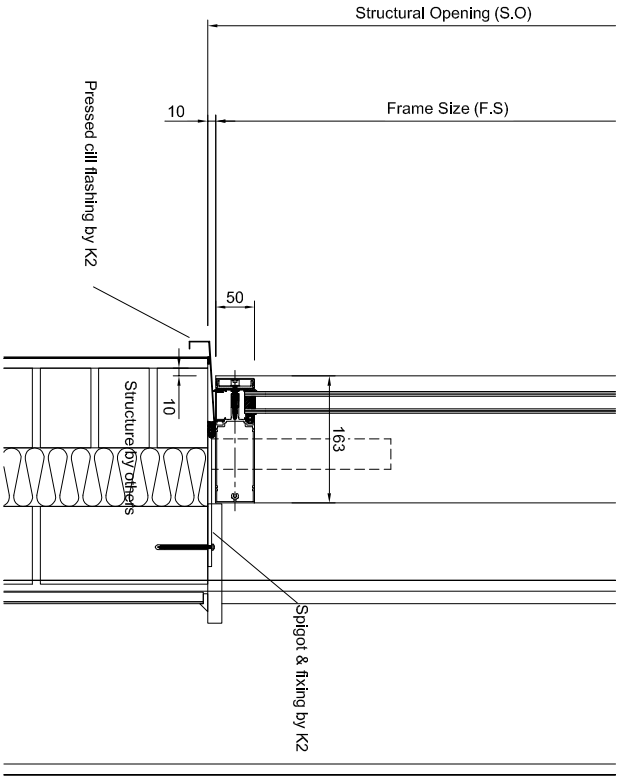


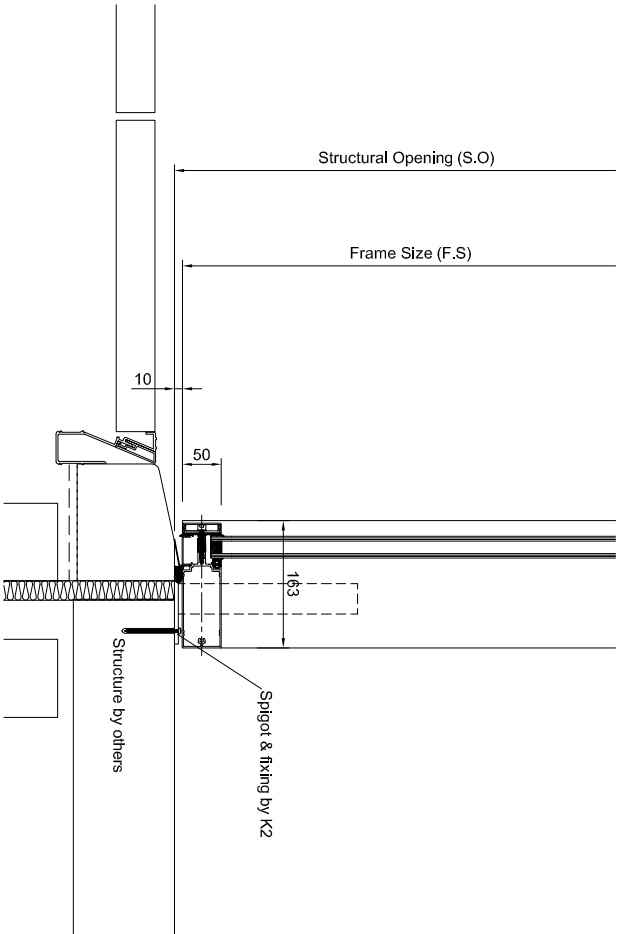
Detail 2: Typical head detail - units 1 & 2



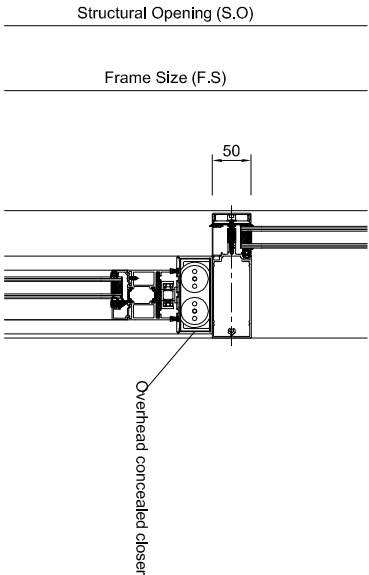
Detail 4: Typical head detail - unit 3



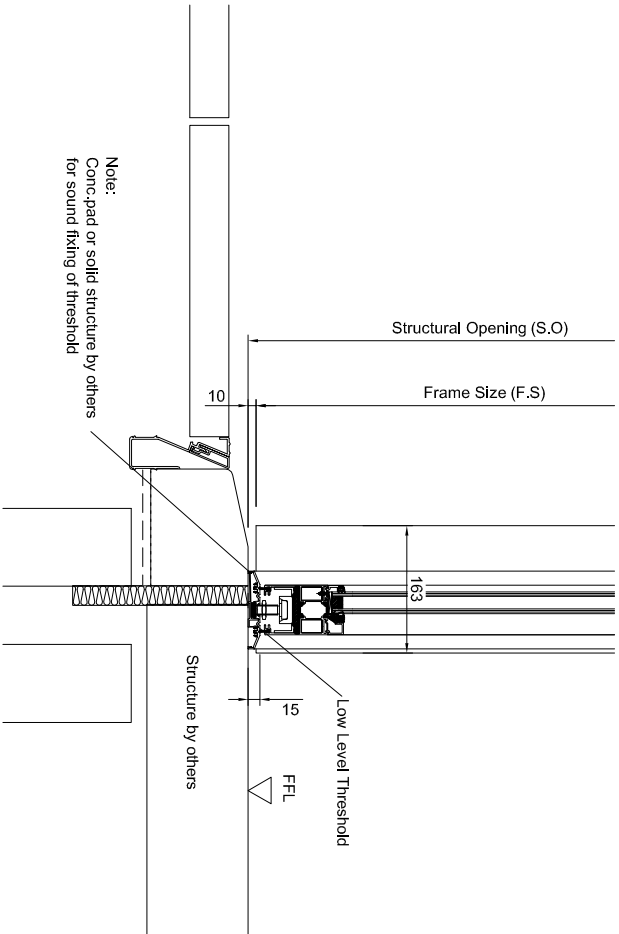
Detail 1: Typical cill detail - units 1 & 2



Detail 3: Typical cill detail - unit 3



Detail 6: Typical door head detail - swing door



Detail 5: Typical threshold detail - unit 3 (Piazza)

| | | | |
|--|--|--|----------|
| B | | Construction Issue | 18.09.15 |
| A | | Frame Moved Forward Detail 1 & 2 CW Section Detail 6 Updated. | 04.09.15 |
| Rev No. | Description | Date | |
| Specification | | | |
| Refer To K2 Drawing 2312-100 For Specification | | | |
| - REVISION B ISSUE - | | | |
| Project | Rat & Parrot, Queens Square, Liverpool | | |
| Drawing Title | Typical Section Details 1 - 6 | | |
| Client | W H Snow Ltd | | |



2

K2 Aluminium Systems Ltd
250 Edgeley Way
Merrington Business Park
Ch41 1DL
Tel: 0151 651 0600 e-mail: mark@k2fastcork
Fax: 0151 651 0601 Web: www.k2fastcork

| | | |
|-------|----------------|------------------|
| Scale | 1:5 @ A1 | Drawing No. |
| Drawn | MLW | MLW-2312-300revB |
| Date | 27th July 2015 | |

This drawing must NOT be copied without full permission from K2 Ltd.