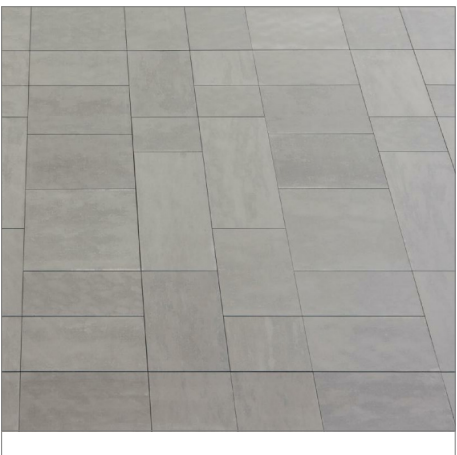
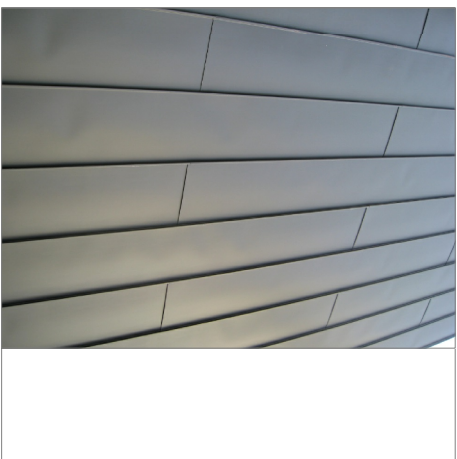


MAIN ELEVATION @ 1:200 SCALE



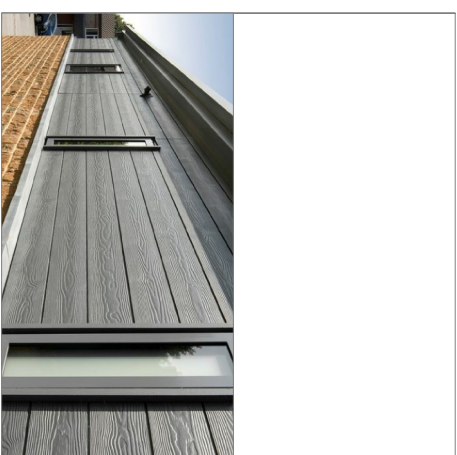
1 Equitone tectiva
(TE20 Pebble)



② Zinc Cladding



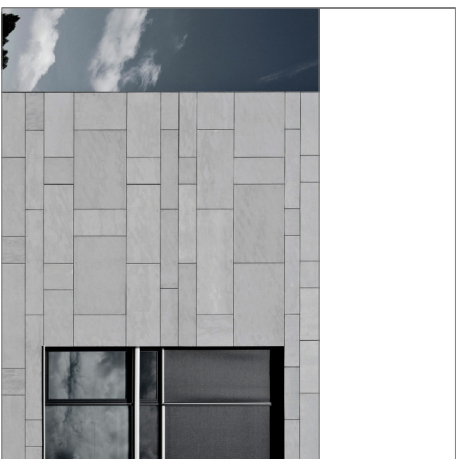
3 Eternit Cedar Lap
(C105 Dark Oak)



4 Eternit Cedral Lap
(C51 Silver Grey)



5 Grey engineering brick base



6 Powder coated aluminium dark grey window frames



7 Frameless toughened
glazed balustrade

Material Specification

Greenbank Synagogue Site

STATUS: PLANNING

Reaction	Item	Date	Doc


NC Architecture, 1st Flr Suite, The Strand, St Ann's Parade
Alderley Rd, Whitlow, Cheshire, SK9 7HG
T: 01625 536 767
F: 01625 536 755
E: info@ncarchitecture.com
W: www.ncarchitecture.com

Project	Residential Development @ Greenbank Synagogue Site
Drawn by	Proposed Material Specification
Provisional	L17 1AN

Print No 2214	Dwg No P-600	Contract TK	Rev ---
Drawn By IL	Scale 1:200 @ A3	Date (MM/YY) March 16	

Figured dimensions to be followed in preference to scaled. All dimensions to be checked on site, in the event of any discrepancy refer to the Architect. This drawing remains the copyright of the Architect and may not be copied in whole or part without prior written consent.