

#### Health and Safety Information

In addition to the hazards/ risks normally associated with the types of work detailed on this drawing, please note the following.

#### Construction

Refer to Project CDM Significant Hazard and Risk Register

#### Maintenance / Cleaning / Operation

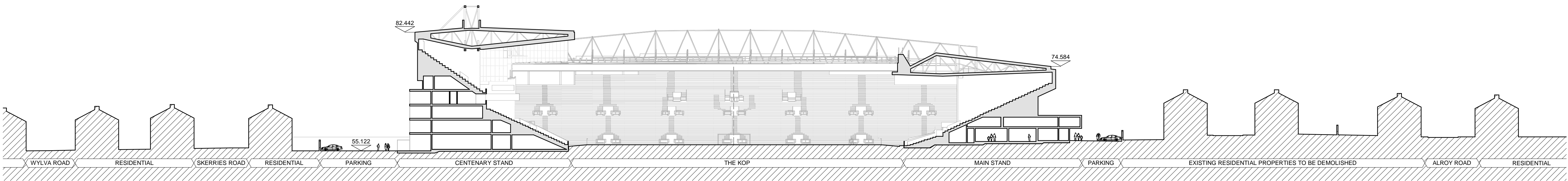
Refer to Project CDM Significant Hazard and Risk Register

#### Decommissioning / Demolition

Refer to Project CDM Significant Hazard and Risk Register

#### Revisions

PL1	25.04.14	PLANNING ISSUE	MB	JF
-----	----------	----------------	----	----

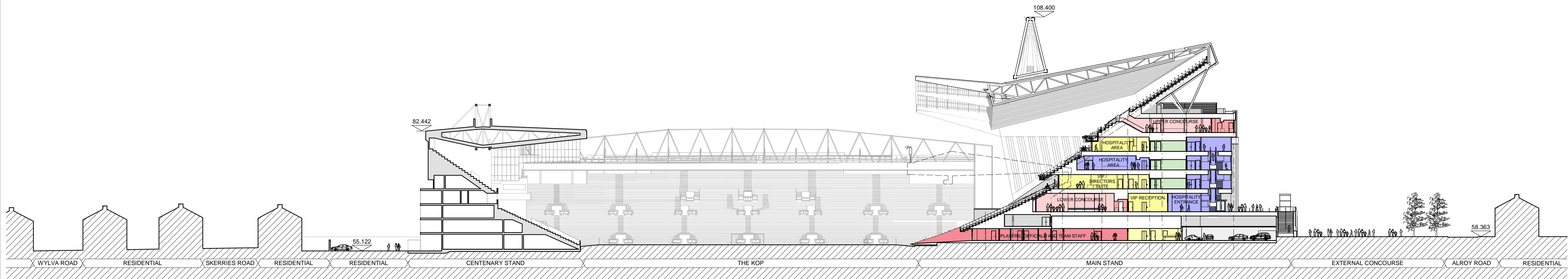


1

### EXISTING SITE SECTION

MAIN STAND AND CENTENARY STAND

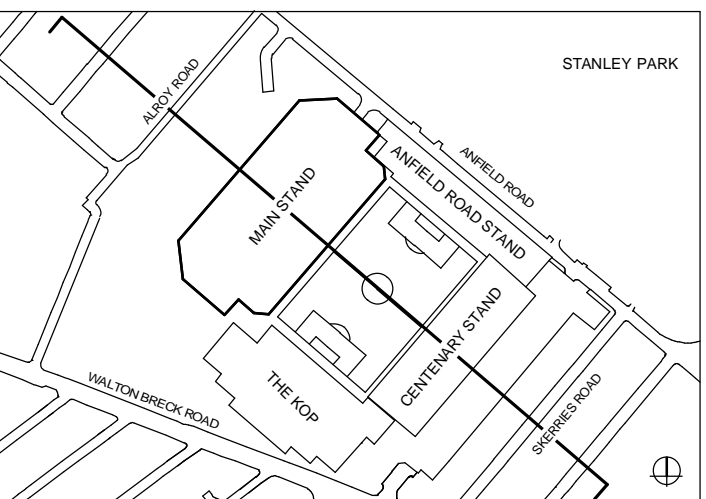
- PLAYERS, OFFICIALS & TEAM STAFF
- CATERING FACILITIES
- HOSPITALITY VIP
- HOSPITALITY VIP WCs & CIRCULATION
- HOSPITALITY LOUNGES & BOXES
- GENERAL ADMISSION CONCOURSE
- GENERAL ADMISSION WCs, CONCESSIONS & CIRCULATION
- VENUE STAFF FACILITIES, SERVICING & STORAGE
- PLANT
- CAR PARKING



2

### PROPOSED SITE SECTION

MAIN STAND AND CENTENARY STAND



KEY PLAN - PHASE 1

#### PLANNING

Client

LIVERPOOL FOOTBALL CLUB

Project

ANFIELD STADIUM EXPANSION  
MAIN STAND PHASE 1

Drawing title

EXISTING & PROPOSED SITE SECTION

**KSS**

London 1 James Street London W1U 1DR T+44(0)20 7907 2222 F+44(0)20 7907 2299	Sevensnoaks 7 Blighs Walk Sevensnoaks TN11 3 1DB T+44(0)20 7907 2222 F+44(0)1732 467 841
--	--

Project number	Drawing number	Revision
12609	210	PL1

SCALE  
0m 5 10 25 50