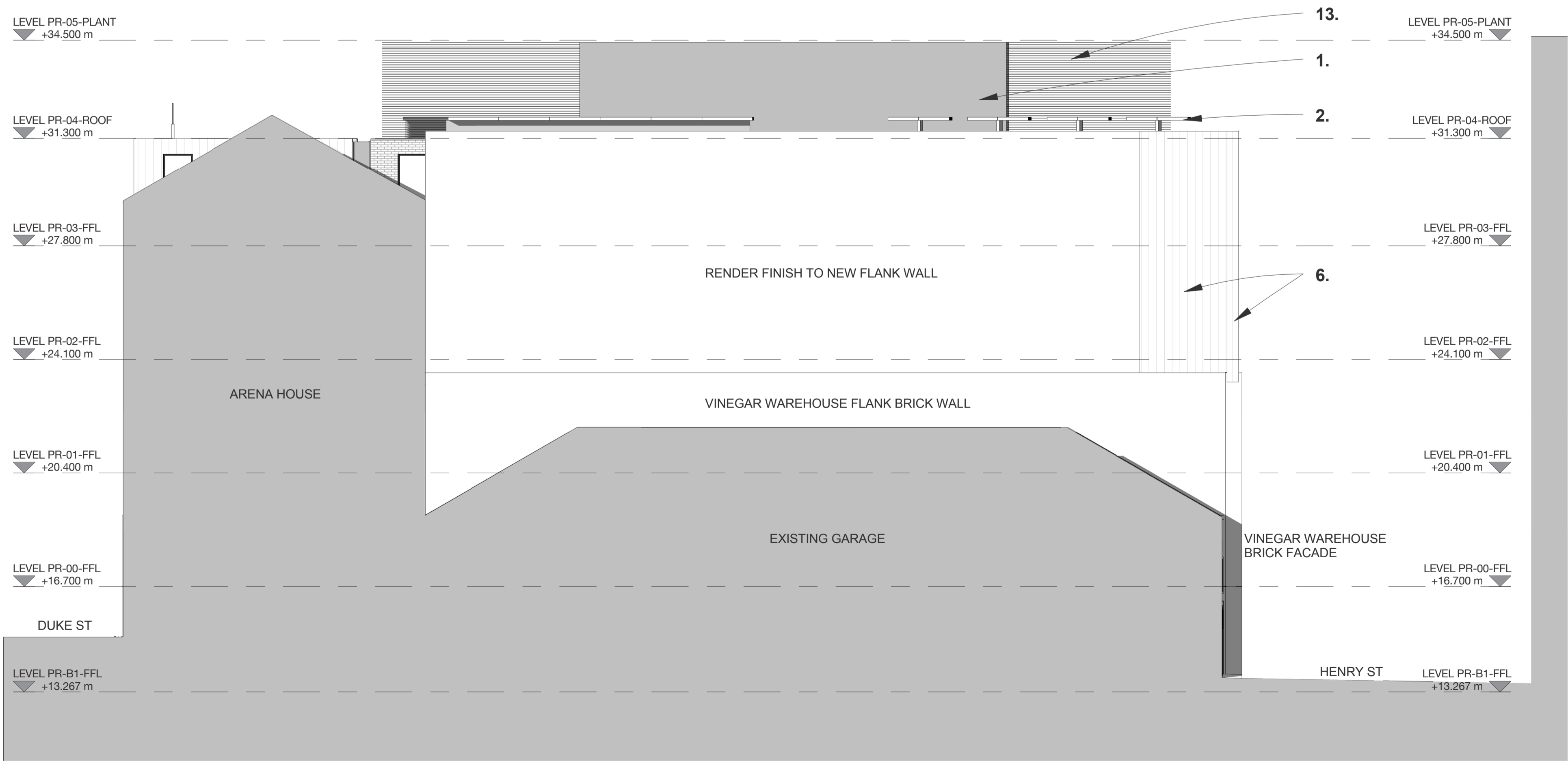


Henry St Elevation

1 : 100



North West Elevation

1 : 100

Material Key

1. Colour coated metal cladding to high level plan screening
2. Roof mounted PV's on metal colour coated framing
3. Roof edge capping detail in colour coated metal
4. 1/2 lap stretcher bond facing brickwork with recessed coloured mortar joints
5. Feature horizontal stone coping with feature horizontal shadow joint
6. Feature metal cladding with standing seam welded joints running vertically
7. Colour coated metal framed window system with clear glazed double glazing and acid etched look-a-like panels
8. Feature metal window framing in metalwork to match feature metal cladding
9. Low level colour coated metal fixed blade louvers to basement areas
10. Low level stone plinth generally
11. Feature corner windows with frameless glazing at the corners, to match the glazing systems generally elsewhere
12. Planar glazed entrance lobby complete with glass revolving doors and night screen. Lobby to have glass fin support system with stainless steel spider fixings as required by specialist manufacturer
13. Colour coated metal fixed blade louvers to external roof plant areas
14. Vertical steel channel

FOR PLANNING

DLA ARCHITECTURE

www.dla-architecture.co.uk  
Pearl Assurance House | 23 Princess Street  
MANCHESTER | M2 4ER  
T : 0161 834 4550 E : info@dl-a-architecture.co.uk

PROJECT  
DUKE STREET  
LIVERPOOL, MERSEYSIDE

TITLE  
PROPOSED  
ELEVATIONS 2 of 3

SCALE  
1 : 100 @ A1  
DATE  
05/04/13

DRAWN  
CW  
REVIEWED  
JK

DRAWING NO  
2012-047\_213  
REVISION

FILE PATH  
C:\Revit\Local  
~\2012.047-B01-XX-M3-AR-Duke-St-Planning  
030413\_CW.rvt

