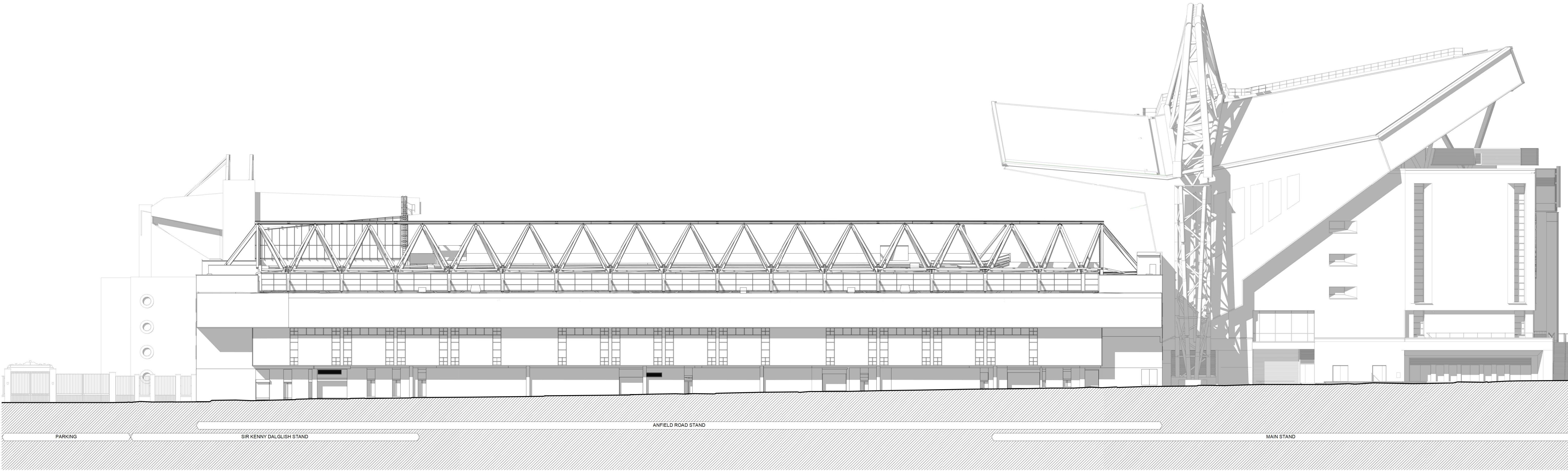


Do not scale this drawing or associated computer digital data, and use figured dimensions only. All dimensions are in millimetres and levels in metres unless noted otherwise. All dimensions should be checked on site prior to works commencing. Any discrepancies or items where dimensions cannot be determined should be reported to KSS. Revision clouds on drawing refer to changes against previous revision.

REVISIONS			
REV	DATE	DESCRIPTION	DRWN CHKD
P1	13.03.20	DRAFT-PLANNING ISSUE	GP JF
P2	26.03.20	PLANNING ISSUE	JTT JT

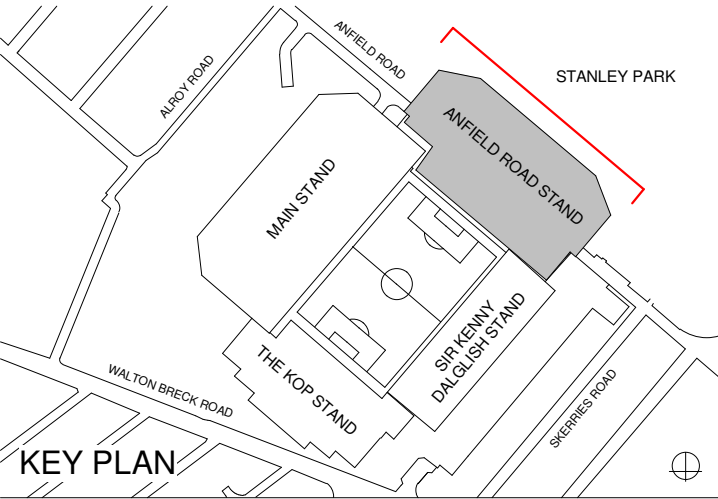
GENERAL NOTES AND LEGEND

NOTE: FOR ALL LANDSCAPE PROPOSALS REFER TO LANDSCAPE ARCHITECTS DRAWINGS



1 EXISTING NORTH-EAST ELEVATION

1 : 250



KSS London 1 James Street London W1U 1DR
Kent 7 Bighs Walk Sevenoaks TN13 1DB
KSSGROUP.COM T: +44 (0)20 7907 2222

CLIENT
LIVERPOOL FOOTBALL CLUB

PROJECT
ANFIELD ROAD STAND EXPANSION

TITLE
EXISTING NORTH-EAST ELEVATION

Suitability codes to BS1192:
S0 WIP, S1 Suitable for Coordination S2 Suitable for Information, S3 Suitable for Review & Comment, S4 Suitable for Stage Approval, S6 Suitable for PM Authorisation, S7 Suitable for AIM Authorisation,
D1 Suitable for Costing, D2 Suitable for Tender, D3 Suitable for Contractor Design,
D4 Suitable for Manufacture/Procurement, A1, A2, An Approved and accepted as stage complete, B1, B2, Bn Partially Signed Off, CR As Construction Record documentation

FILE REFERENCE

AR-ZZ-DR-A-SK09

SCALE	FORMAT	SUITABILITY	REVISION
1 : 250	@ A1	S2	P2

REFERENCE

19870-KSS-AR-ZZ-DR-A-9306

