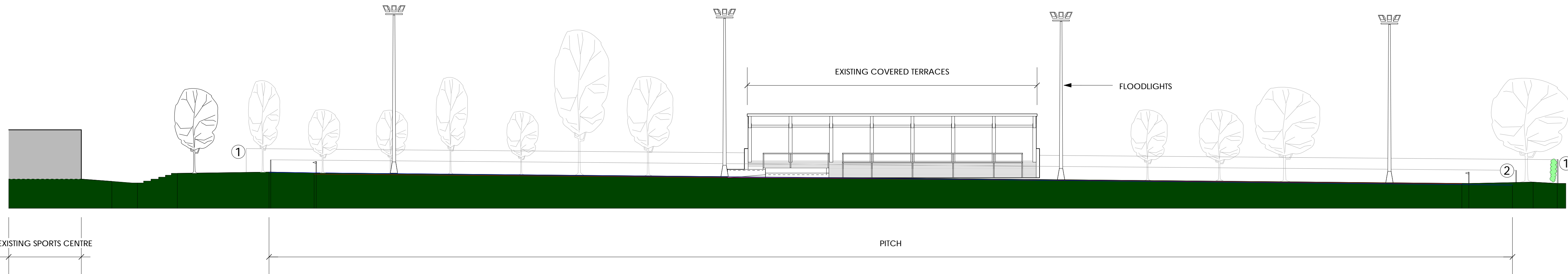
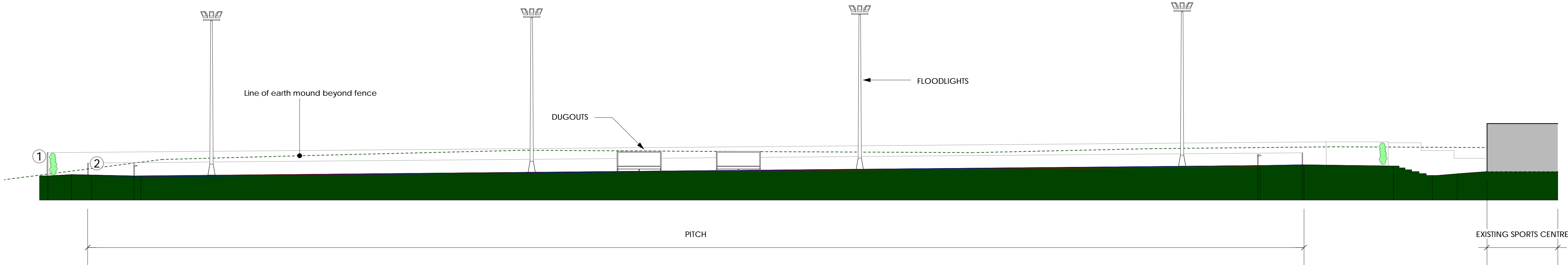


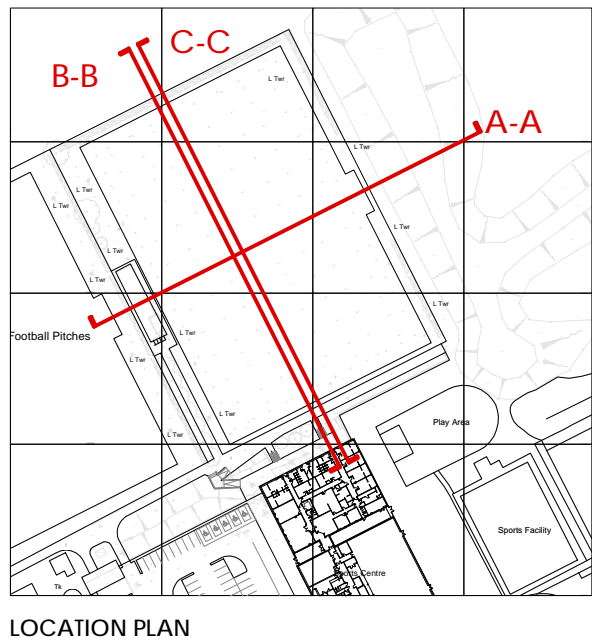
SECTION A-A



SECTION B-B



SECTION C-C



- NOTES
- 1. This drawing is copyright of Condy and Luffhouse Ltd. and may not be reproduced in any way without their specific permission.
  - 2. All dimensions are to be checked on site. Do not rely on the drawing, work to agreed dimensions only. Any queries please contact the architect.
- MATERIALS PROHIBITED
- Materials prohibited from use, except where used in accordance with Good Practice in the Schedule of Construction Materials, March 2017 or unless required by the Contract.
- 1. high-strength concrete in the structural concrete.
  - 2. avoid steel reinforcement in permanent formwork to concrete.
  - 3. calcium chloride admixtures for use in reinforced concrete.
  - 4. asbestos or asbestos-containing products, as defined in the Control of Asbestos at Work Regulations, as amended 2012 or any other statutory notification or restriction thereof.
  - 5. any heavily corroding or rust-prone material where the material, such as steel or steel, is in contact with a thickness of 3 mm or less and a length of 200 mm or less, unless they are adequately sealed to prevent ingress of fibres.
  - 6. aggregates for use in reinforced concrete which do not comply with BS EN 12620:2002 properties of aggregates used in concrete.
  - 7. BS EN 12620:2002 properties of aggregates used in concrete.
  - 8. BS EN 12620:2002 Part 1 & 2 properties of lightweight aggregates.
  - 9. BS EN 12620:2002 & Concrete Society Technical Report 24 (1998).
  - 10. BS EN 12620:2002 & Concrete Society Technical Report 24 (1998).
  - 11. BS EN 12620:2002 & Concrete Society Technical Report 24 (1998).
  - 12. BS EN 12620:2002 & Concrete Society Technical Report 24 (1998).
  - 13. BS EN 12620:2002 & Concrete Society Technical Report 24 (1998).
  - 14. BS EN 12620:2002 & Concrete Society Technical Report 24 (1998).
  - 15. BS EN 12620:2002 & Concrete Society Technical Report 24 (1998).
  - 16. BS EN 12620:2002 & Concrete Society Technical Report 24 (1998).
  - 17. BS EN 12620:2002 & Concrete Society Technical Report 24 (1998).
  - 18. BS EN 12620:2002 & Concrete Society Technical Report 24 (1998).
  - 19. BS EN 12620:2002 & Concrete Society Technical Report 24 (1998).
  - 20. BS EN 12620:2002 & Concrete Society Technical Report 24 (1998).
  - 21. BS EN 12620:2002 & Concrete Society Technical Report 24 (1998).
  - 22. BS EN 12620:2002 & Concrete Society Technical Report 24 (1998).
  - 23. BS EN 12620:2002 & Concrete Society Technical Report 24 (1998).
  - 24. BS EN 12620:2002 & Concrete Society Technical Report 24 (1998).
  - 25. BS EN 12620:2002 & Concrete Society Technical Report 24 (1998).
  - 26. BS EN 12620:2002 & Concrete Society Technical Report 24 (1998).
  - 27. BS EN 12620:2002 & Concrete Society Technical Report 24 (1998).
  - 28. BS EN 12620:2002 & Concrete Society Technical Report 24 (1998).
  - 29. BS EN 12620:2002 & Concrete Society Technical Report 24 (1998).
  - 30. BS EN 12620:2002 & Concrete Society Technical Report 24 (1998).
  - 31. BS EN 12620:2002 & Concrete Society Technical Report 24 (1998).
  - 32. BS EN 12620:2002 & Concrete Society Technical Report 24 (1998).
  - 33. BS EN 12620:2002 & Concrete Society Technical Report 24 (1998).
  - 34. BS EN 12620:2002 & Concrete Society Technical Report 24 (1998).
  - 35. BS EN 12620:2002 & Concrete Society Technical Report 24 (1998).
  - 36. BS EN 12620:2002 & Concrete Society Technical Report 24 (1998).
  - 37. BS EN 12620:2002 & Concrete Society Technical Report 24 (1998).
  - 38. BS EN 12620:2002 & Concrete Society Technical Report 24 (1998).
  - 39. BS EN 12620:2002 & Concrete Society Technical Report 24 (1998).
  - 40. BS EN 12620:2002 & Concrete Society Technical Report 24 (1998).
  - 41. BS EN 12620:2002 & Concrete Society Technical Report 24 (1998).
  - 42. BS EN 12620:2002 & Concrete Society Technical Report 24 (1998).
  - 43. BS EN 12620:2002 & Concrete Society Technical Report 24 (1998).
  - 44. BS EN 12620:2002 & Concrete Society Technical Report 24 (1998).
  - 45. BS EN 12620:2002 & Concrete Society Technical Report 24 (1998).
  - 46. BS EN 12620:2002 & Concrete Society Technical Report 24 (1998).
  - 47. BS EN 12620:2002 & Concrete Society Technical Report 24 (1998).
  - 48. BS EN 12620:2002 & Concrete Society Technical Report 24 (1998).
  - 49. BS EN 12620:2002 & Concrete Society Technical Report 24 (1998).
  - 50. BS EN 12620:2002 & Concrete Society Technical Report 24 (1998).
  - 51. BS EN 12620:2002 & Concrete Society Technical Report 24 (1998).
  - 52. BS EN 12620:2002 & Concrete Society Technical Report 24 (1998).
  - 53. BS EN 12620:2002 & Concrete Society Technical Report 24 (1998).
  - 54. BS EN 12620:2002 & Concrete Society Technical Report 24 (1998).
  - 55. BS EN 12620:2002 & Concrete Society Technical Report 24 (1998).
  - 56. BS EN 12620:2002 & Concrete Society Technical Report 24 (1998).
  - 57. BS EN 12620:2002 & Concrete Society Technical Report 24 (1998).
  - 58. BS EN 12620:2002 & Concrete Society Technical Report 24 (1998).
  - 59. BS EN 12620:2002 & Concrete Society Technical Report 24 (1998).
  - 60. BS EN 12620:2002 & Concrete Society Technical Report 24 (1998).
  - 61. BS EN 12620:2002 & Concrete Society Technical Report 24 (1998).
  - 62. BS EN 12620:2002 & Concrete Society Technical Report 24 (1998).
  - 63. BS EN 12620:2002 & Concrete Society Technical Report 24 (1998).
  - 64. BS EN 12620:2002 & Concrete Society Technical Report 24 (1998).
  - 65. BS EN 12620:2002 & Concrete Society Technical Report 24 (1998).
  - 66. BS EN 12620:2002 & Concrete Society Technical Report 24 (1998).
  - 67. BS EN 12620:2002 & Concrete Society Technical Report 24 (1998).
  - 68. BS EN 12620:2002 & Concrete Society Technical Report 24 (1998).
  - 69. BS EN 12620:2002 & Concrete Society Technical Report 24 (1998).
  - 70. BS EN 12620:2002 & Concrete Society Technical Report 24 (1998).
  - 71. BS EN 12620:2002 & Concrete Society Technical Report 24 (1998).
  - 72. BS EN 12620:2002 & Concrete Society Technical Report 24 (1998).
  - 73. BS EN 12620:2002 & Concrete Society Technical Report 24 (1998).
  - 74. BS EN 12620:2002 & Concrete Society Technical Report 24 (1998).
  - 75. BS EN 12620:2002 & Concrete Society Technical Report 24 (1998).
  - 76. BS EN 12620:2002 & Concrete Society Technical Report 24 (1998).
  - 77. BS EN 12620:2002 & Concrete Society Technical Report 24 (1998).
  - 78. BS EN 12620:2002 & Concrete Society Technical Report 24 (1998).
  - 79. BS EN 12620:2002 & Concrete Society Technical Report 24 (1998).
  - 80. BS EN 12620:2002 & Concrete Society Technical Report 24 (1998).
  - 81. BS EN 12620:2002 & Concrete Society Technical Report 24 (1998).
  - 82. BS EN 12620:2002 & Concrete Society Technical Report 24 (1998).
  - 83. BS EN 12620:2002 & Concrete Society Technical Report 24 (1998).
  - 84. BS EN 12620:2002 & Concrete Society Technical Report 24 (1998).
  - 85. BS EN 12620:2002 & Concrete Society Technical Report 24 (1998).
  - 86. BS EN 12620:2002 & Concrete Society Technical Report 24 (1998).
  - 87. BS EN 12620:2002 & Concrete Society Technical Report 24 (1998).
  - 88. BS EN 12620:2002 & Concrete Society Technical Report 24 (1998).
  - 89. BS EN 12620:2002 & Concrete Society Technical Report 24 (1998).
  - 90. BS EN 12620:2002 & Concrete Society Technical Report 24 (1998).
  - 91. BS EN 12620:2002 & Concrete Society Technical Report 24 (1998).
  - 92. BS EN 12620:2002 & Concrete Society Technical Report 24 (1998).
  - 93. BS EN 12620:2002 & Concrete Society Technical Report 24 (1998).
  - 94. BS EN 12620:2002 & Concrete Society Technical Report 24 (1998).
  - 95. BS EN 12620:2002 & Concrete Society Technical Report 24 (1998).
  - 96. BS EN 12620:2002 & Concrete Society Technical Report 24 (1998).
  - 97. BS EN 12620:2002 & Concrete Society Technical Report 24 (1998).
  - 98. BS EN 12620:2002 & Concrete Society Technical Report 24 (1998).
  - 99. BS EN 12620:2002 & Concrete Society Technical Report 24 (1998).
  - 100. BS EN 12620:2002 & Concrete Society Technical Report 24 (1998).

18-167-160

Walton Hall Park  
Ground Upgrading  
Existing Site Sections

1:2000 A1 PD Feb '19

18-167-160