

NOTES

Retain existing windows W10 & W11 and provide new draught strips to parting bead, staff bead and meeting rail and ease & adjust window. Provide aluminium secondary glazing reveal fixed with tilting facility for internal cleaning by Grenada.

Retain existing windows W5 & W6 and provide new draught strips to parting bead, staff bead and meeting rail and ease & adjust window. Provide aluminium secondary glazing reveal fixed with tilting facility for internal cleaning by Grenada.

Retain existing windows W1 & W2 and provide new draught strips to parting bead, staff bead and meeting rail and ease & adjust window. Provide aluminium secondary glazing reveal fixed with tilting facility for internal cleaning by Grenada.

Replace existing windows W14 to rear elevation with new concealed box sash double glazed weighted windows in 4/4/4mm double glazed units with xenon fill. Retain existing boxes etc... adjust existing weights to suit

Replace existing windows W9 to rear elevation with new concealed box sash double glazed weighted windows in 4/4/4mm double glazed units with xenon fill. Retain existing boxes etc... adjust existing weights to suit

Replace existing windows W12 to rear elevation with new concealed box sash double glazed weighted windows in 4/4/4mm double glazed units with xenon fill. Retain existing boxes etc... adjust existing weights to suit

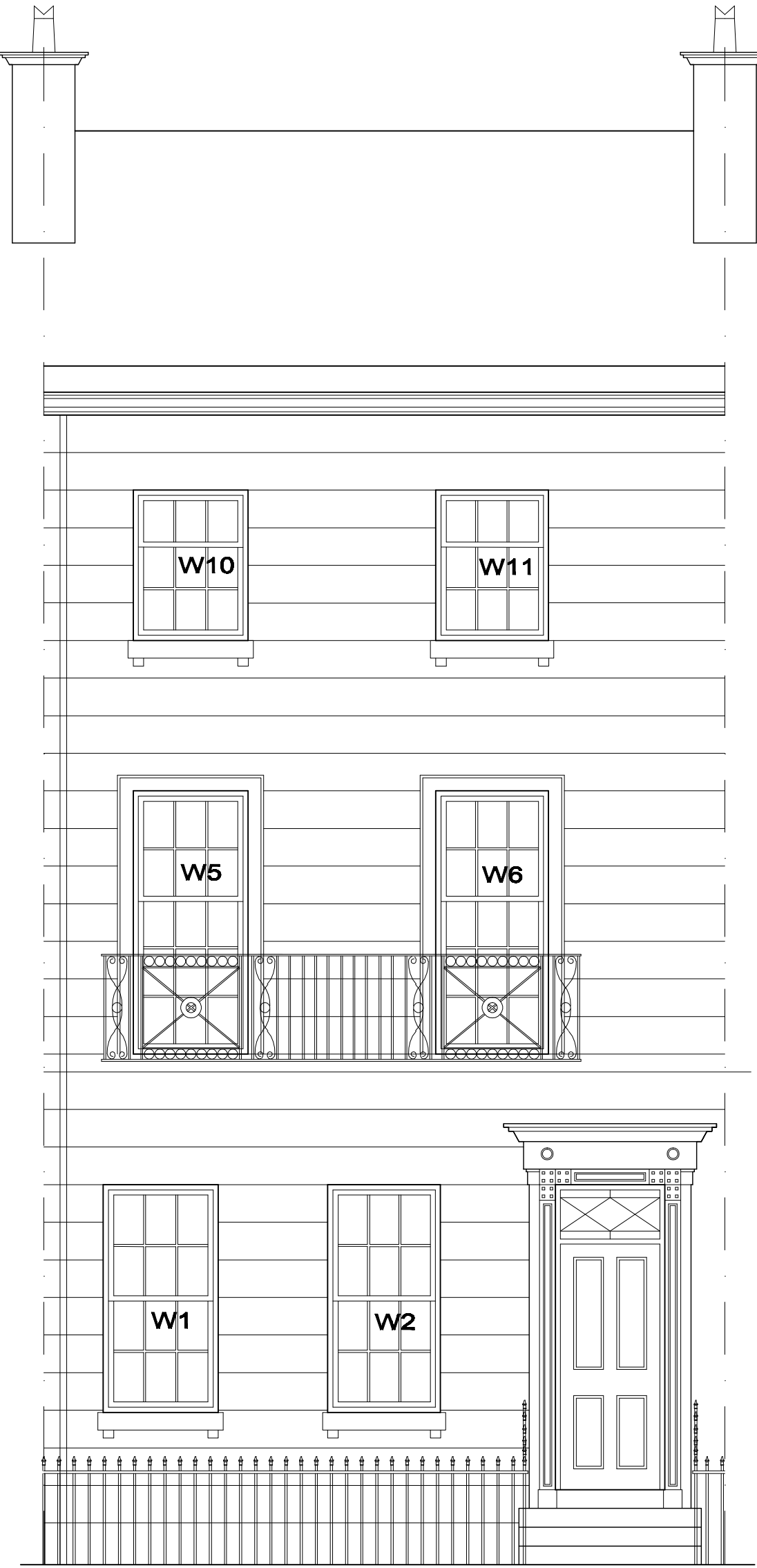
Replace existing windows W7 to rear elevation with new concealed box sash double glazed weighted windows in 4/4/4mm double glazed units with xenon fill. Retain existing boxes etc... adjust existing weights to suit

Retain existing windows W3 and provide new draught strips to parting bead, staff bead and meeting rail and ease & adjust window. Provide aluminium secondary glazing reveal fixed with tilting facility for internal cleaning by Grenada.

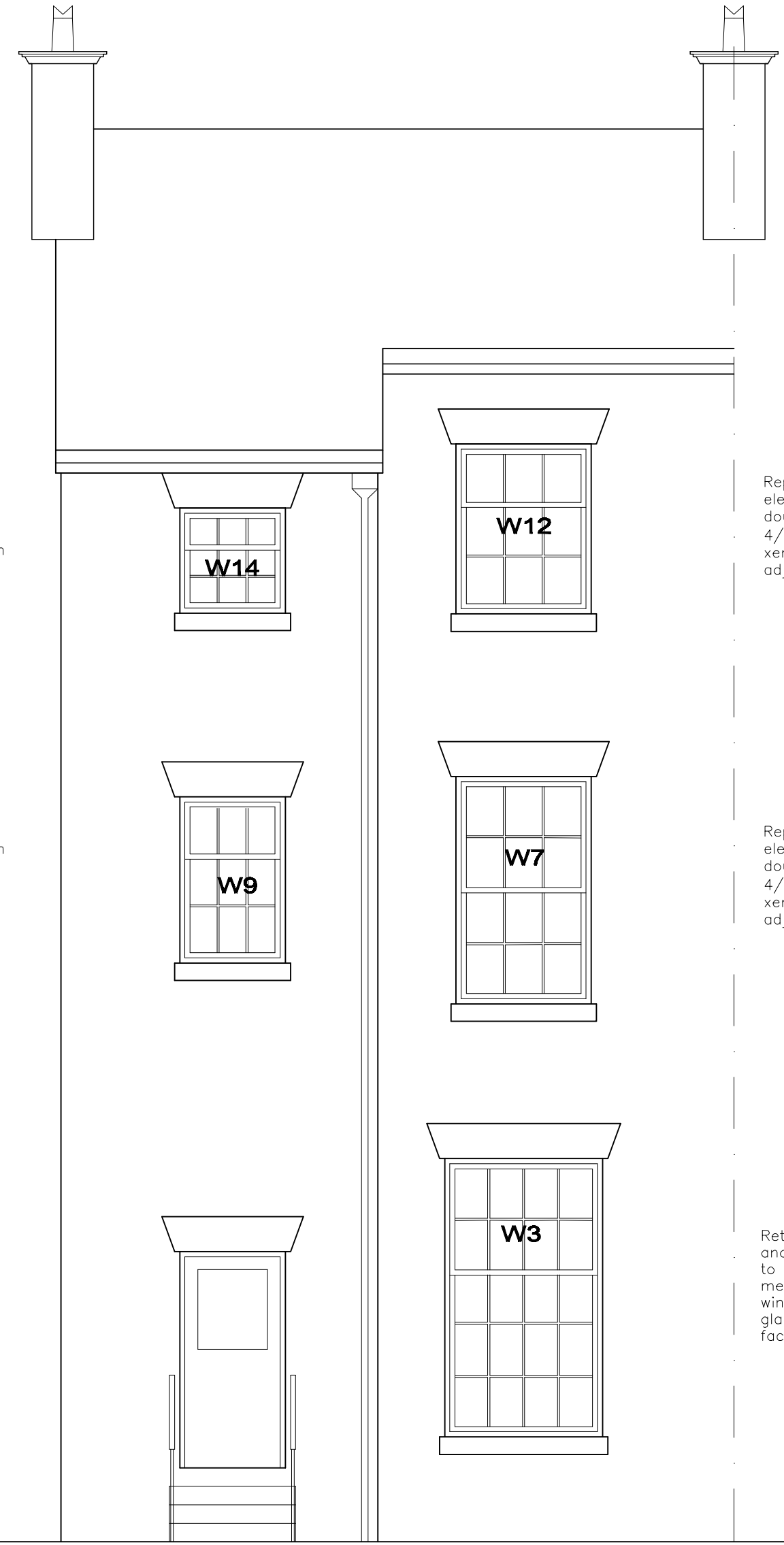
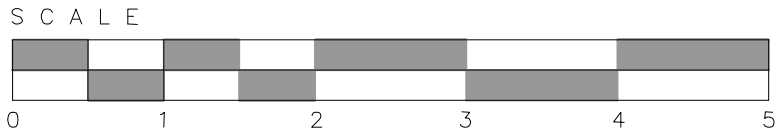
Replace existing windows W13 to side elevation with new concealed box sash double glazed weighted windows in 4/4/4mm double glazed units with xenon fill. Retain existing boxes etc... adjust existing weights to suit

Replace existing windows W8 to side elevation with new concealed box sash double glazed weighted windows in 4/4/4mm double glazed units with xenon fill. Retain existing boxes etc... adjust existing weights to suit

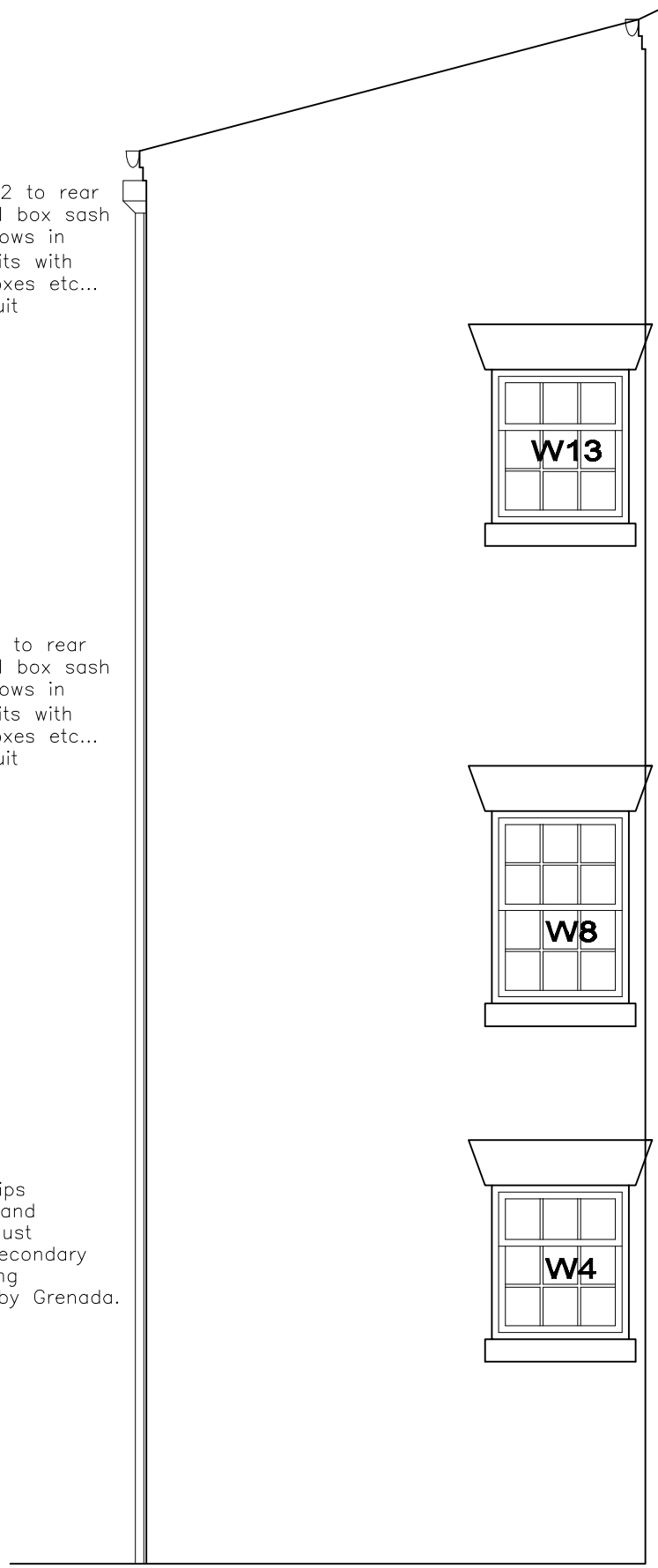
Retain existing window W4 and provide new draught strips to parting bead, staff bead and meeting rail and ease & adjust window.



FRONT ELEVATION



REAR ELEVATION



SIDE ELEVATION

F	W3 noted as retained with secondary glazing	03.10.16
E	W7 & W12 altered	12.02.16
D	W10 & W11 to be retained rear elev redrawn	14.01.16
C	Notes amended	27.10.15
B	Notes amended	30.11.12
A	Notes amended	07.11.12
REVISIONS		DATE

DWG TITLE		PROPOSED ELEVATIONS	
JOB		30 PERCY STREET LIVERPOOL L8 7LU	
CLIENT		O V H	
SCALE	1:50 @ A1	DWG No	1737/121F
DRAWN	TA	DATE	19.10.12



ARCHITECTS . PROJECT MANAGERS . PROPERTY CONSULTANTS . COM PLANNING CONSULTANTS

B Y A Limited
Alina House, 10 St Vincent Street, Liverpool, L3 5XW
Tel: 0151 708 6121 Fax: 0151 708 9141