
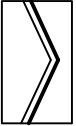
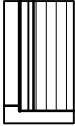


NOTES


FACING MATERIALS


- 


Roofs: Interlocking concrete roof tiles, flat profile, grey
- 

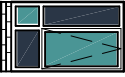
Roofs: upvc dry verge units
- 

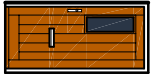
Roofs: eaves, upvc fascias, grey Rainwater goods, upvc, black

- 

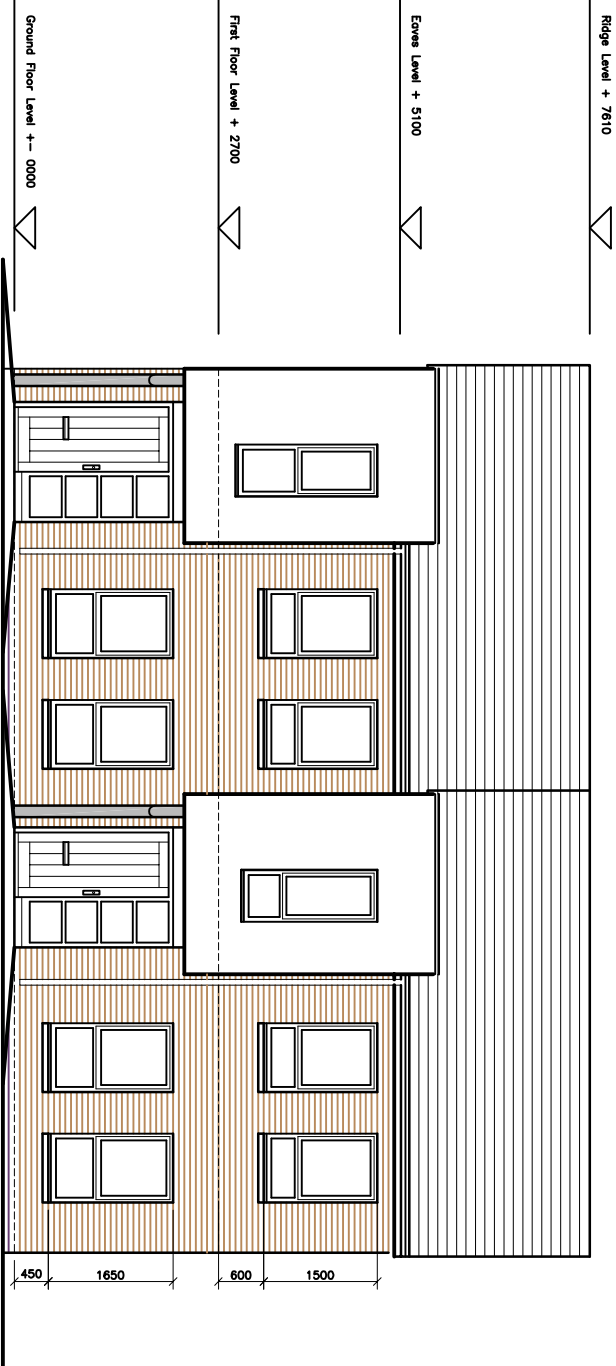
Walls: Facing brick 1 red/buff
- 

Walls: Facing brick 2 blue
- 

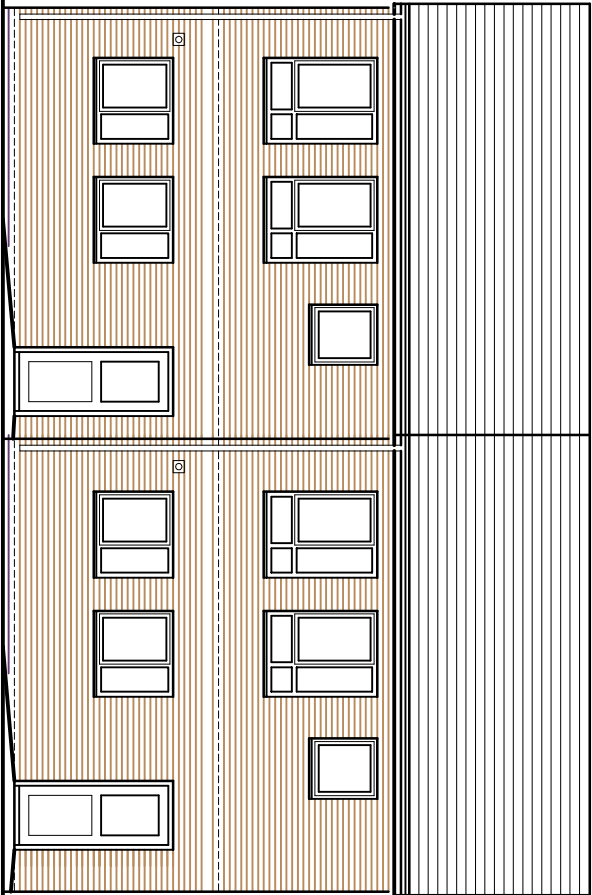
Walls: Render off-white
- 

Windows: upvc, colour grey to house, 16mm double glazing, 16mm sub-sills of houses to have plinth stretcher
- 

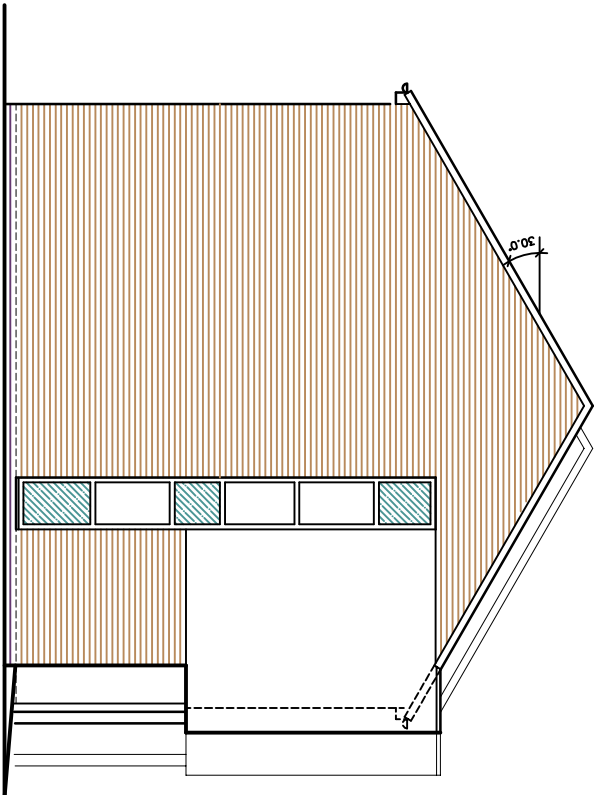
Front doors to houses: gfp/linbar composite



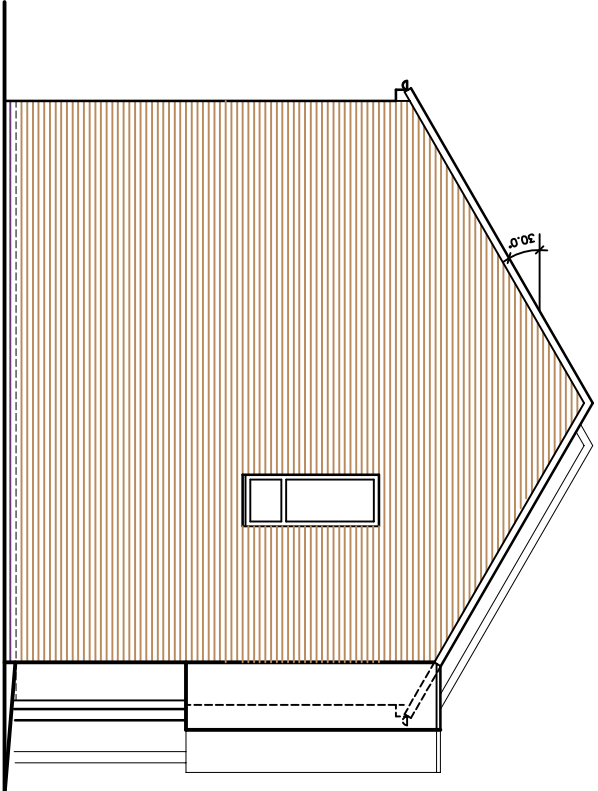
FRONT



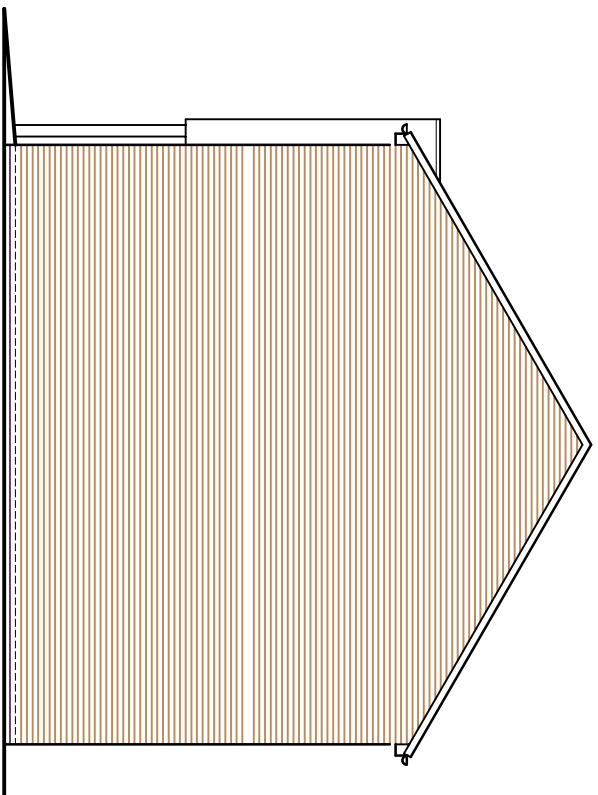
REAR



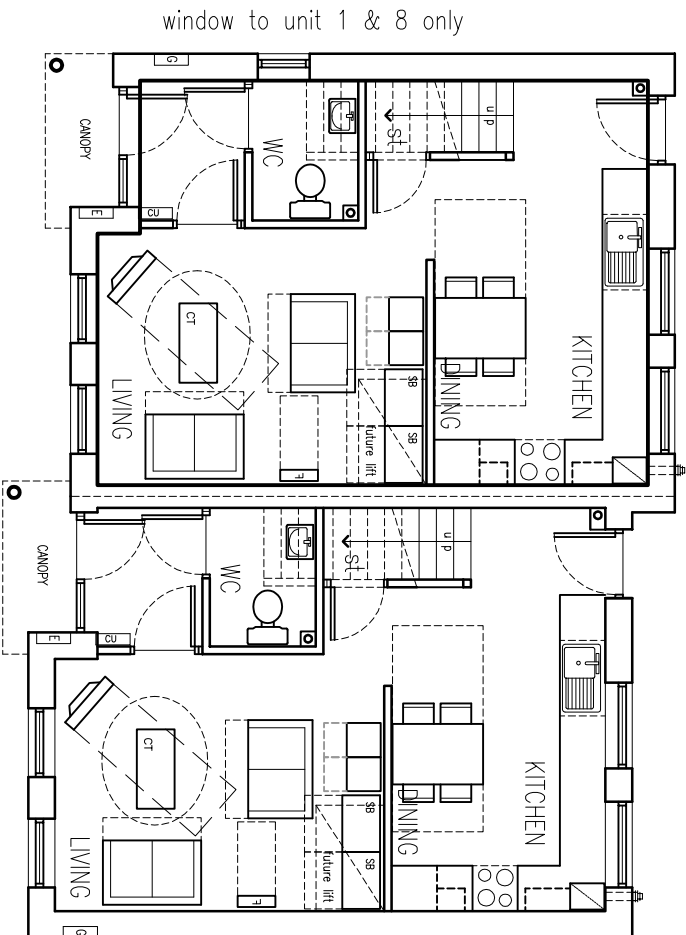
GABLE UNIT 1  
UNIT 9 HANDED



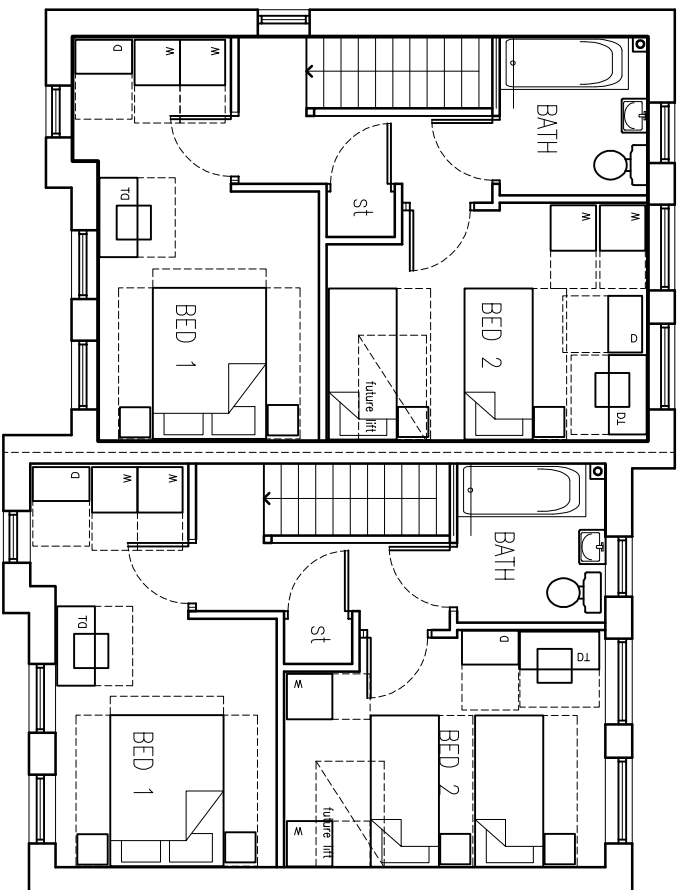
GABLE UNIT 3, 5 & 7  
UNIT 11 HANDED



GABLE UNIT 2, 4, 6 & 8  
UNIT 10 & 12 HANDED



GROUND FLOOR  
Total 77 sqm



FIRST FLOOR

Units 1-8  
Units 9-12 HANDED  
2 bed UNITS

DWG TITLE		05.03.15
PROPOSED 2 BEDROOM HOUSE		
UNITS 1 - 12		
16 New houses at land at		
TETLOW STREET		
Liverpool L4		
DATE		

SCALE		DATE
1:100@A2		22.03.13
DRAWN		
GM		

B	Y	A
---	---	---