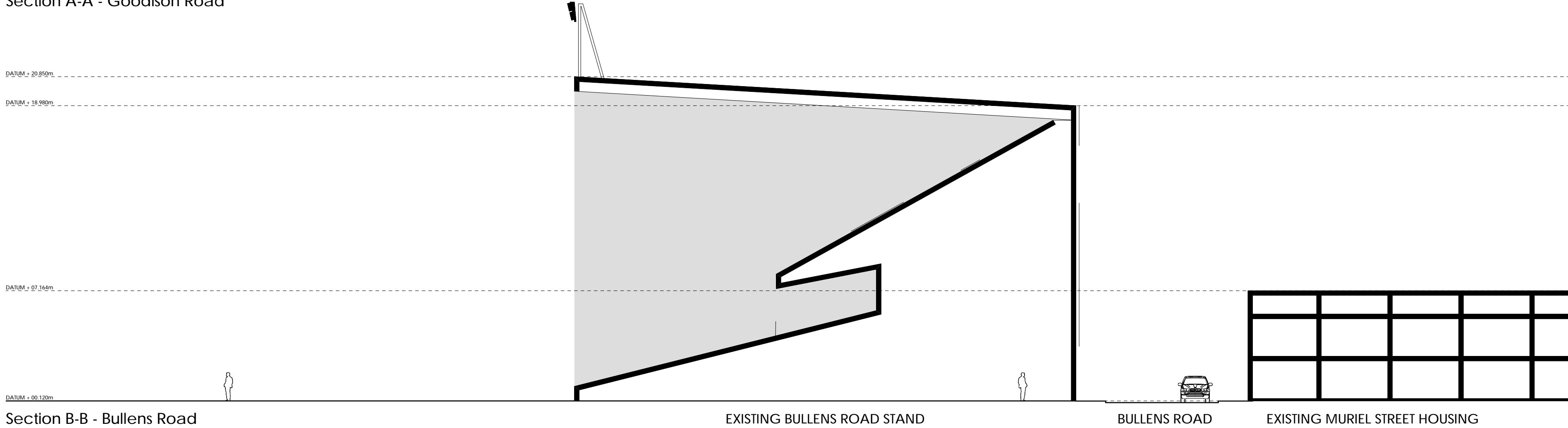
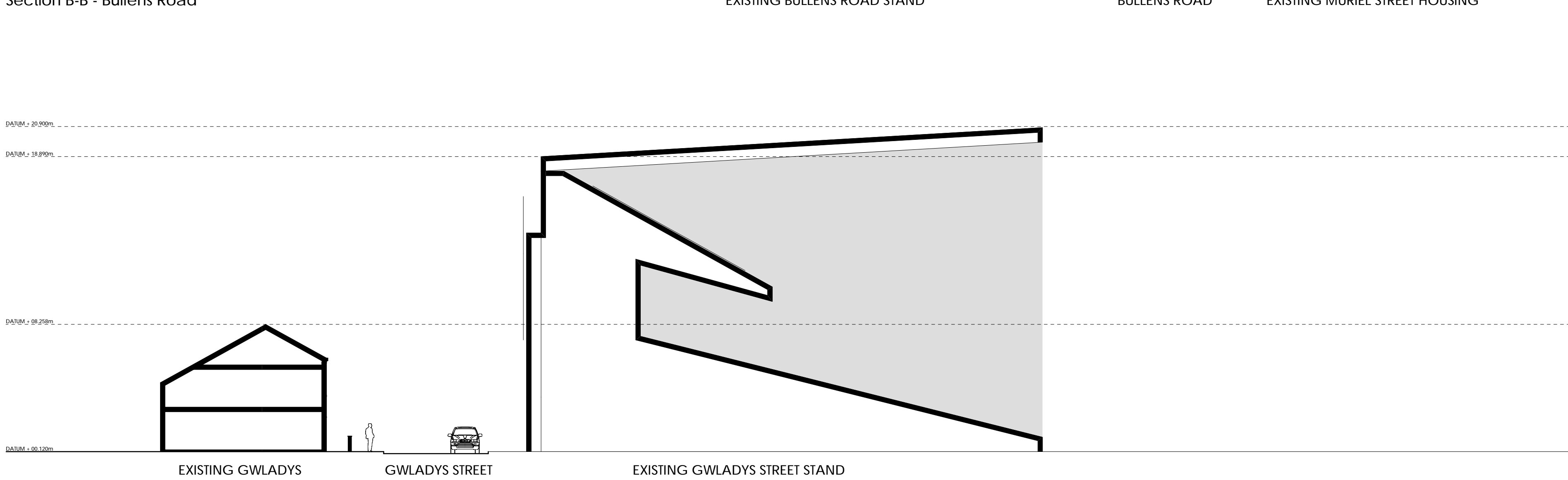


Section A-A - Goodison Road

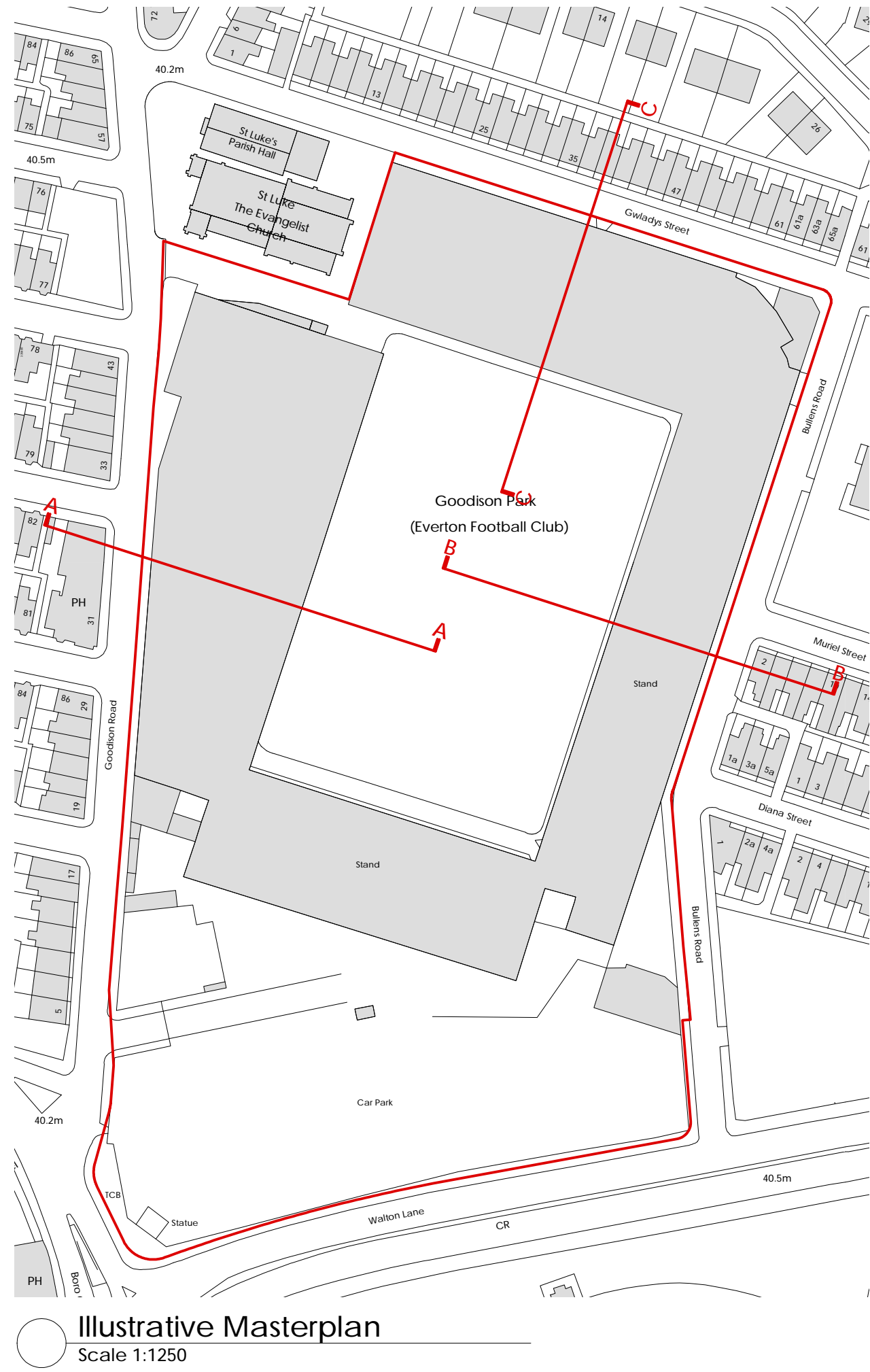
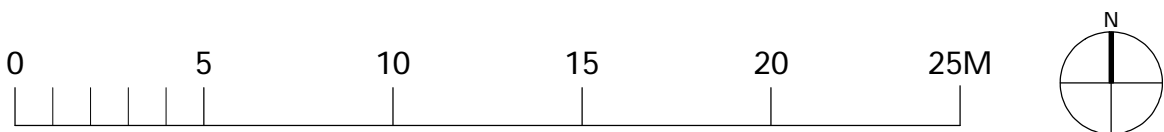


Section B-B - Bullens Road



Section C-C - Gwladys Street

Existing Site Sections A-C  
Scale 1:200



## NOTES

- This drawing is copyright of Condy and Lofthouse Ltd. and may not be reproduced in any way without their specific permission.
- All dimensions are to be checked on site. Do not scale from this drawing, work to figured dimensions only. Any queries please contact the architect.

## MATERIALS PROHIBITED

Materials prohibited from use, except where used in accordance with Good Practice in the Selection of Construction Materials (March 2011) or unless required by the Contract.

- high alumina cement in the structural elements;
- wood wool slabs in permanent formwork to concrete;
- calcium chloride admixtures for use in reinforced concrete;
- asbestos or asbestos containing products, as defined in the Control of Asbestos at Work Regulations, as amended 2012 or any other statutory modification or re-enactment thereof;
- any naturally occurring or man-made mineral fibres (for example, rock wool or slag wool) with a thickness of 5 microns or less and a length of 200 microns or less, unless they are appropriately sealed to prevent migration of fibres;
- aggregates for use in reinforced concrete which do not comply with:
  - BS EN 12620:2002: Properties of aggregates used in concrete;
  - BS EN 12620:2002: Properties of aggregates used in mortar;
  - BS EN 12620:2002: Properties of lightweight aggregates;
  - BS EN 12620:2002: Properties of lightweight aggregates.Guidance on avoiding alkali-silica reaction and limitations on alkali content in BRE Digest 330 (2004) & Concrete Society Technical Report 30 (1999);
- lead, lead paint or any other materials containing lead which may be ingested, inhaled or absorbed, except where copper alloy fittings also containing lead are specifically required in drinking water pipework by any relevant statutory requirement or where lead flashings or other lead roof coverings are specifically provided for in the Contract;
- urea formaldehyde foam or materials which may release formaldehyde in quantities which may be hazardous with reference to the limits set by the Health and Safety Executive:
  - calcium silicate bricks or tiles;
  - verticals unless it is established as being fibre-free; calcium silicate bricks or tiles;
  - any products containing cadmium referred to in Statutory Instrument 'S' 2006/3311Controls on dangerous substances and preparations Regulations 2006. Reference should also be made to HSE GS62/99: Cadmium and you;
- any new timber treated with pentachlorophenol;
- non galvanneal mild steel structural fixings for building elements particularly susceptible to corrosion;
- concrete used in circumstances where it is susceptible to alkali-silica reaction;
- materials containing chlorofluorocarbons (CFC's);
- solvent based paints except where water based paints are unsuitable for unavailability; any new materials not in accordance with statutory requirements, British Standards, Codes of Practice and good building practice current at the date of incorporation of the relevant materials into the Works or the specifications thereof;

Note: Layout subject to full measured survey, input from structural engineer, details of all easements, rights of way and wayleaves, statutory approvals and utility information.

P3	Updated	2020-02-07 PD
P2	Updated	2019-11-12 EE
P1	First Issue	2019-10-01 PD

REVISION DETAILS date / by

- Preliminary
- For Approval
- Tender
- Construction

CLIENT

Everton Stadium Development Limited

PROJECT

Goodison Park Legacy Project

DRAWING TITLE

Existing Site Sections A-C

SCALE drawn by date

1:200@A1 PD SEPT 19

DRAWING NO revision

17-087-160 P3



T: 0151 207 4371 • F: 0151 207 7087