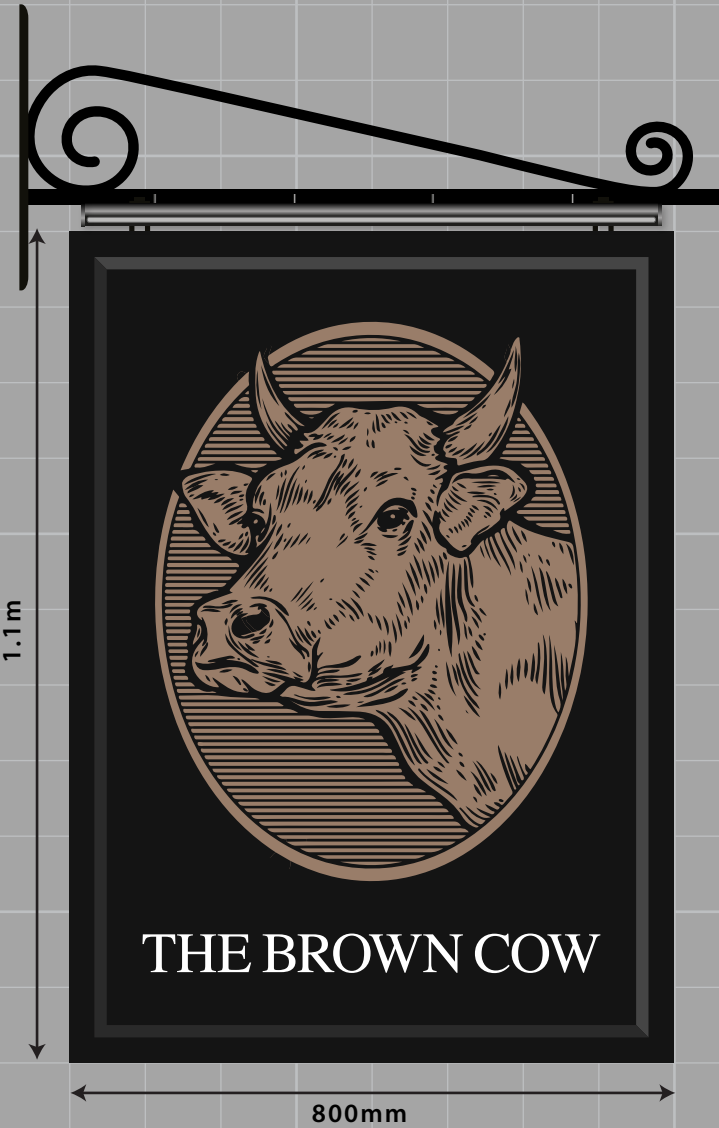
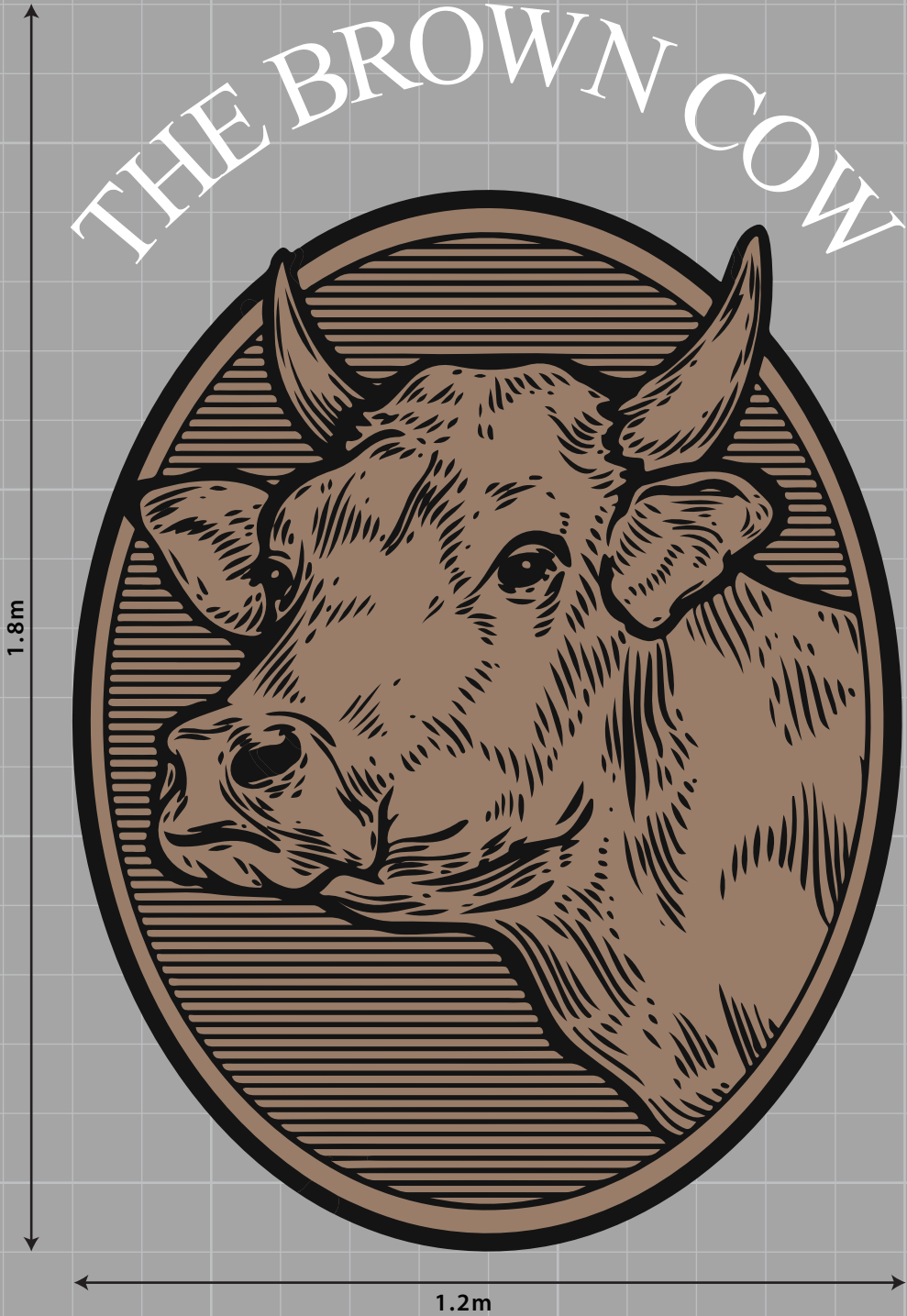


A ONE x new double sided pictorial with vinyl display, new linolites,
new wrought iron bracket.
Size 800mm x 1.1m. H.A.G 3.6m



B ONE x new set of signwriting to gates
Size 1.2m x 1.8m. H.A.G 500mm.



C ONE x new lantern.
Size 600mm x 600mm x 800mm H.A.G 2.5m

'Decorlight- Hyde Park A' Lantern

Die cast aluminium lantern with acrylic glazing box.
Solid cast mounting and bracket, suitable for top or
bottom fixing. Polyester powder coat finish in black
or Victorian bronze.



D FOUR x new LED floodlights.
H.A.G 5m x 3, 6.4m x 1.



SIGN COLOURS:

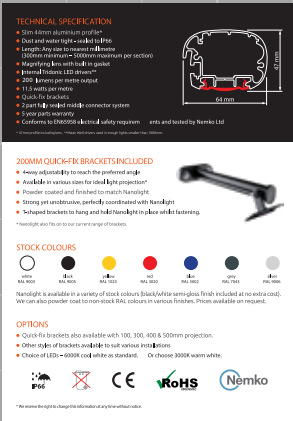
BLACK



WHITE



BS 08 B 21



1:10 @ A3

srsigns
Limited

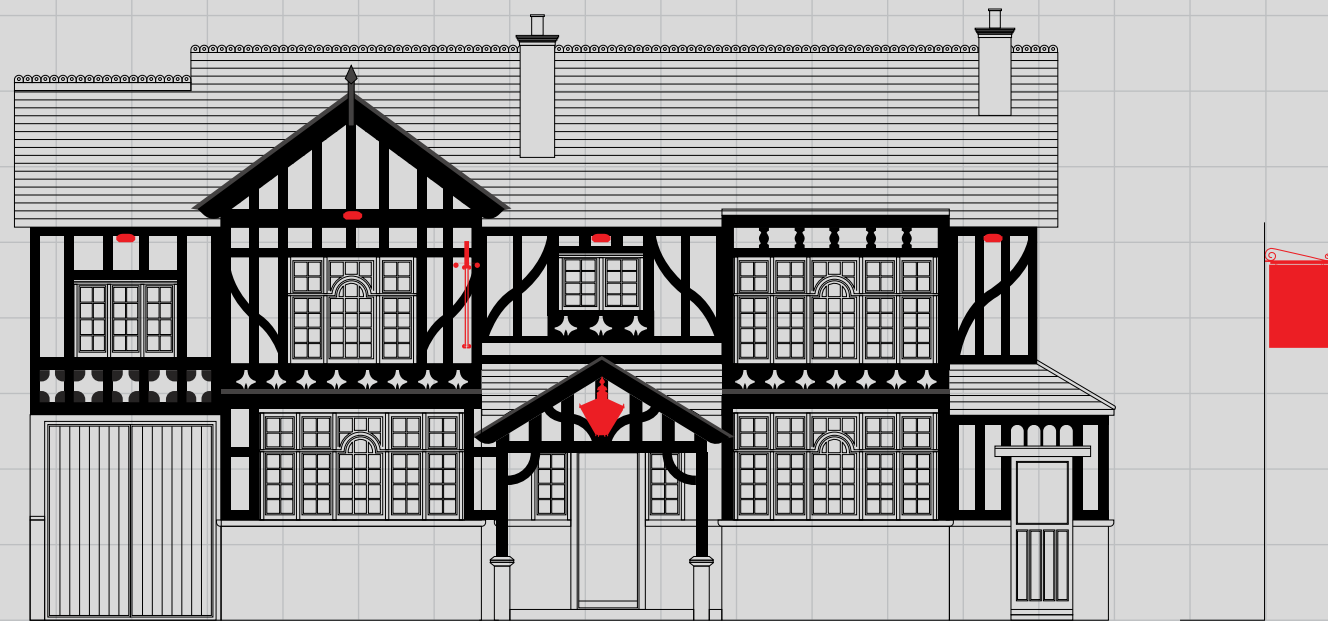
BROWN COW . LIVERPOOL. HAWTHORNE 4.2.21. 16974-planning AH

PRINTED COLOURS MAY NOT SHOW TRUE REPRESENTATION

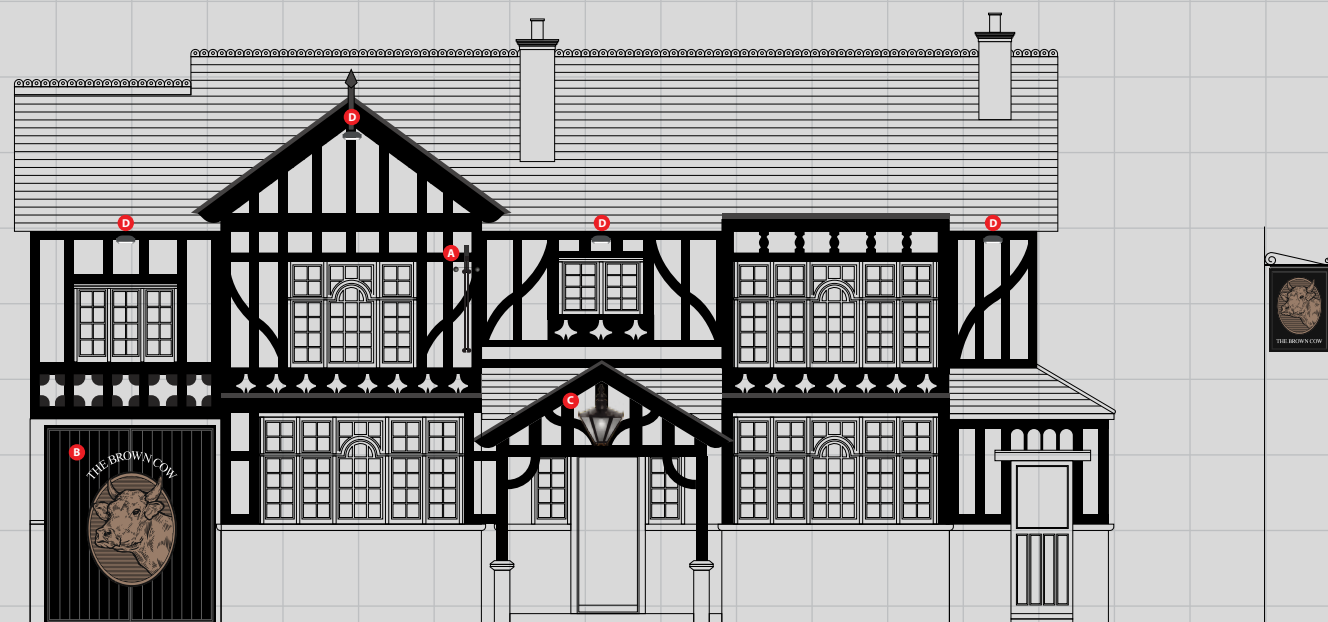
THIS DRAWING SHOULD NOT BE REPRODUCED UNLESS BY EXPLICIT CONSENT

SR SIGNS LIMITED: 0113 2798266 sales@sr-signs.co.uk

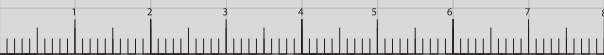




EXISTING ELEVATION



PROPOSED ELEVATION



1 SQUARE 1M X 1M

1:100 @ A3



BROWN COW .LIVERPOOL. HAWTHORNE 4.2.20. 16970 Planning elevation AH

PRINTED COLOURS MAY NOT SHOW TRUE REPRESENTATION

THIS DRAWING SHOULD NOT BE REPRODUCED UNLESS BY EXPLICIT CONSENT

SR SIGNS LIMITED: 0113 2798266 sales@sr-signs.co.uk

