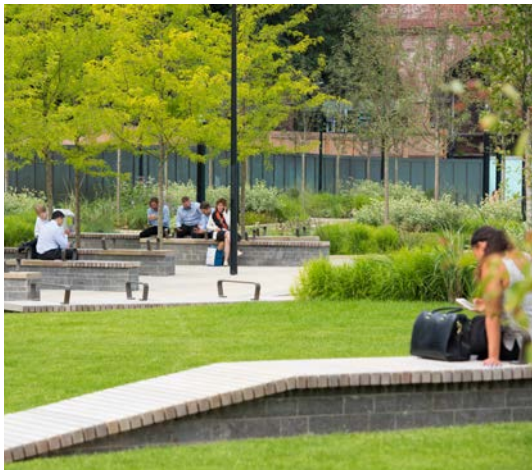




PAVING DETAIL ACROSS THE PRIMARY FOOTPATHS





Raised Seating Edges and Lawns

KEY:

1. High quality amenity lawns
2. Articulated timber seating platform
3. Raised lawn edge with seating. Heights vary between 450 and 600mm
4. Primary footpath route running between the lawns
5. Broadleaf tree planting set within the lawns
6. Mixed planting verge 1.5m deep
7. Clear stemmed tree planting within the street with associated seating elements
8. 150mm upstand to lawns with level elements to enable pram and wheelchair access
9. Opportunity for seating spillout associated with the ground floor units
10. Lighting columns to key pedestrian routes

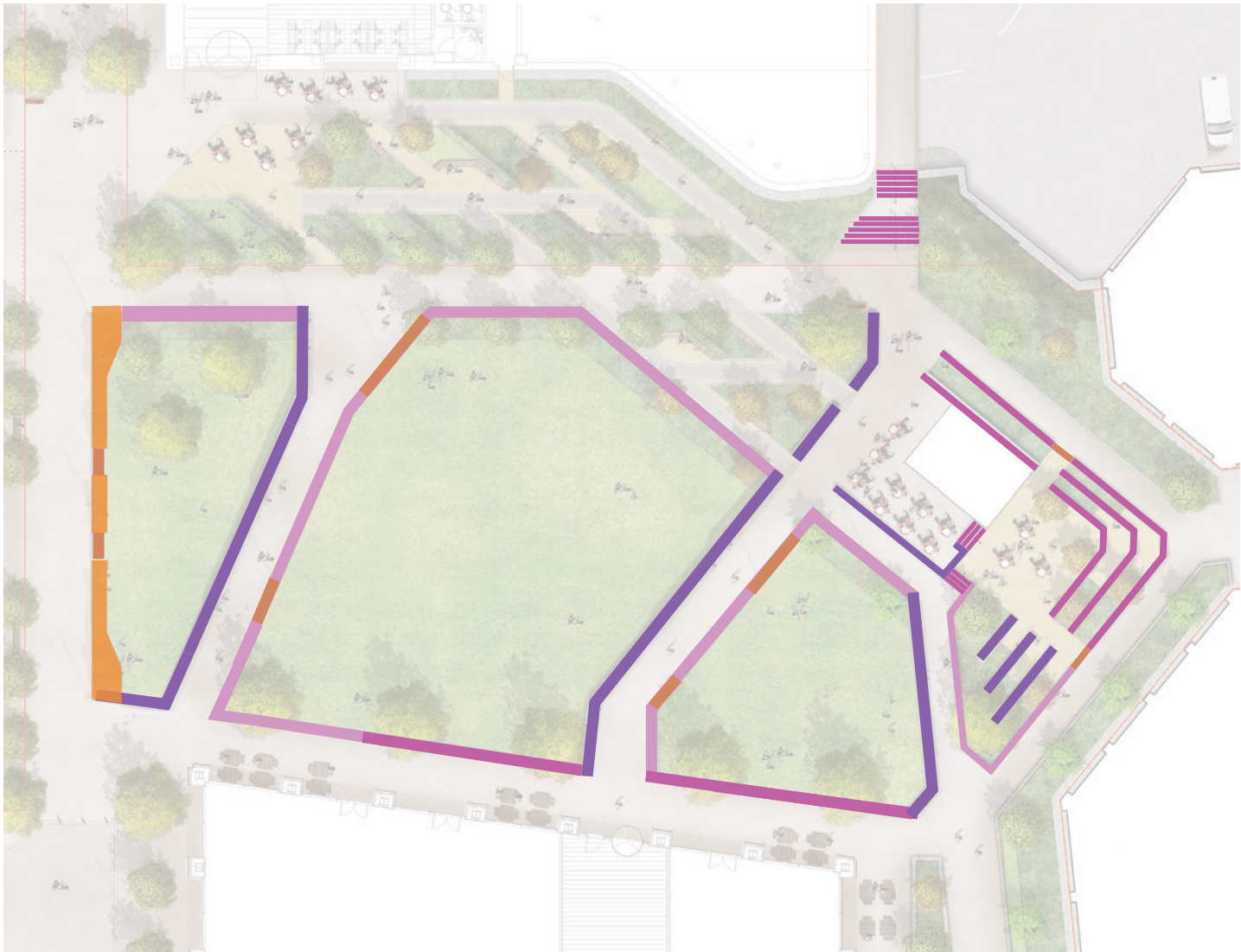
8.12 THE LAWNS

Lying at the heart of the park are a series of open lawns. Raised to protect the edges from excessive wear these lawns provide opportunity for flexible uses from informal play to picnics. The lawns are split into three and terrace down throughout the space enabling the edges to be utilised as seating.

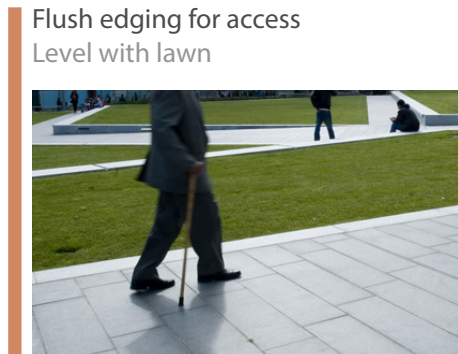
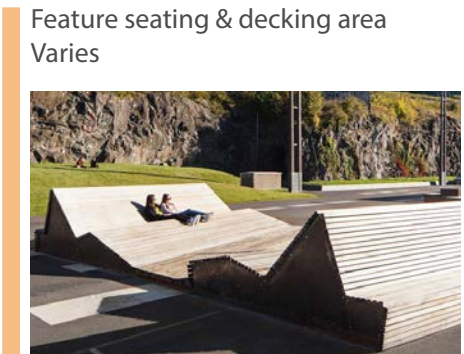
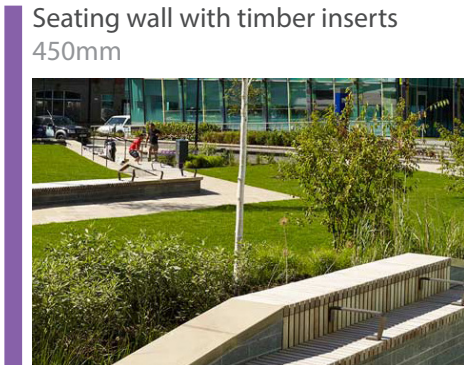
- 8.12.1 Lawns are largely level to enable flexible use with opportunity for small scale events, such as makers markets, or community days to be programmed.
- 8.12.2 Raised edges to the lawns provide opportunities for informal seating.
- 8.12.3 Flush channels will enable level access onto the lawns.
- 8.12.4 Tree planting is incorporated to the northern most lawn to offer some dappled shade for users.
- 8.12.5 A boarder of mixed shrub planting marks the edge of the lawns and the garden spaces.



Illustrative section of seating platform to the north of the lawns



KEY:



8.12 THE LAWNS

Due to the level changes across the site the lawns sit as a series of level terraces with a seating populating one edge. Alongside the seating are a series of differing treatments than enable protection of corners and access points. These can be broken down into the following:

8.12.1 Seating edges:

Set at a average height of 450mm these edges lie alongside the key routes and protect the lawns from excessive wear and inform users of the key footpaths.

8.12.2 Stepped edge:

A series of 2 steps mark the transition from the seating edge to the a more standard upstand. 150mm high risers with 300mm treads allow access to the lawn level.

8.12.3 Standard edge:

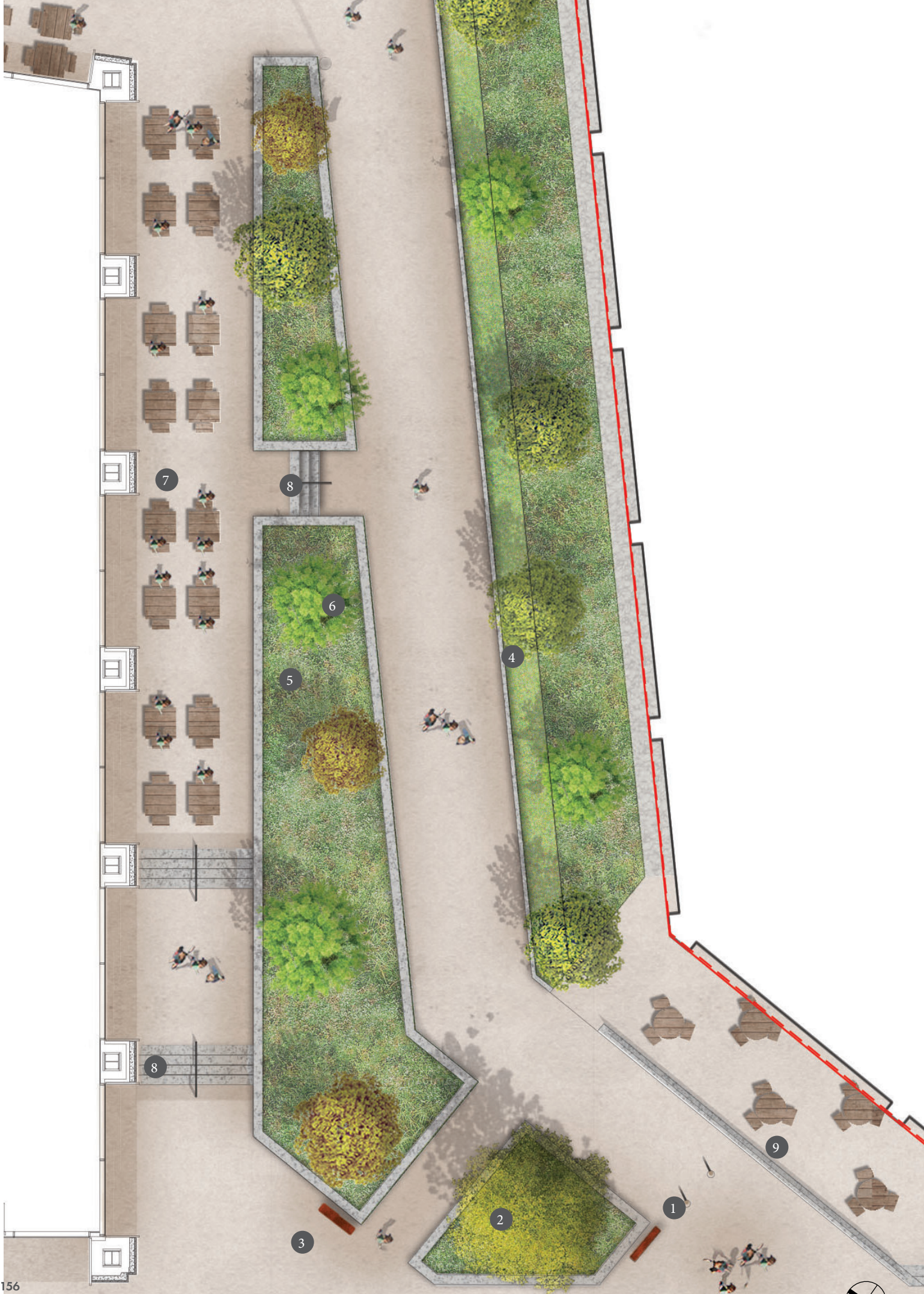
With an upstand of 150mm these edges help protect the lawns from wear along their edges.

8.12.4 Feature seating area:

A series of articulated seating decks are positioned along the northern edge of the lawn in the sunniest position of the site. Encouraging people to stop and sit the decks are arranged such that they offer a variety of seating orientations.

8.12.5 Flush edging for access:

A series of flush channels will be positioned around the lawns to enable access for prams, users with wheelchairs and maintenance.





Seating terrace with Tree planting

KEY:

1. Primary accessible footpath linking from Bixteth Street into the park 3.5 - 4.0m
2. Feature entrance tree
3. Signage elements
4. Planted verge with multi stemmed tree planting
5. Raised planter with mixed herbaceous and evergreen planting
6. Raised planter wall between 200- 600mm high
7. South facing terrace for ground floor units
8. Stepped access to terrace with handrails to relevant standards
9. Terraced edge to Exchange Station building to allow future spillout from corner unit

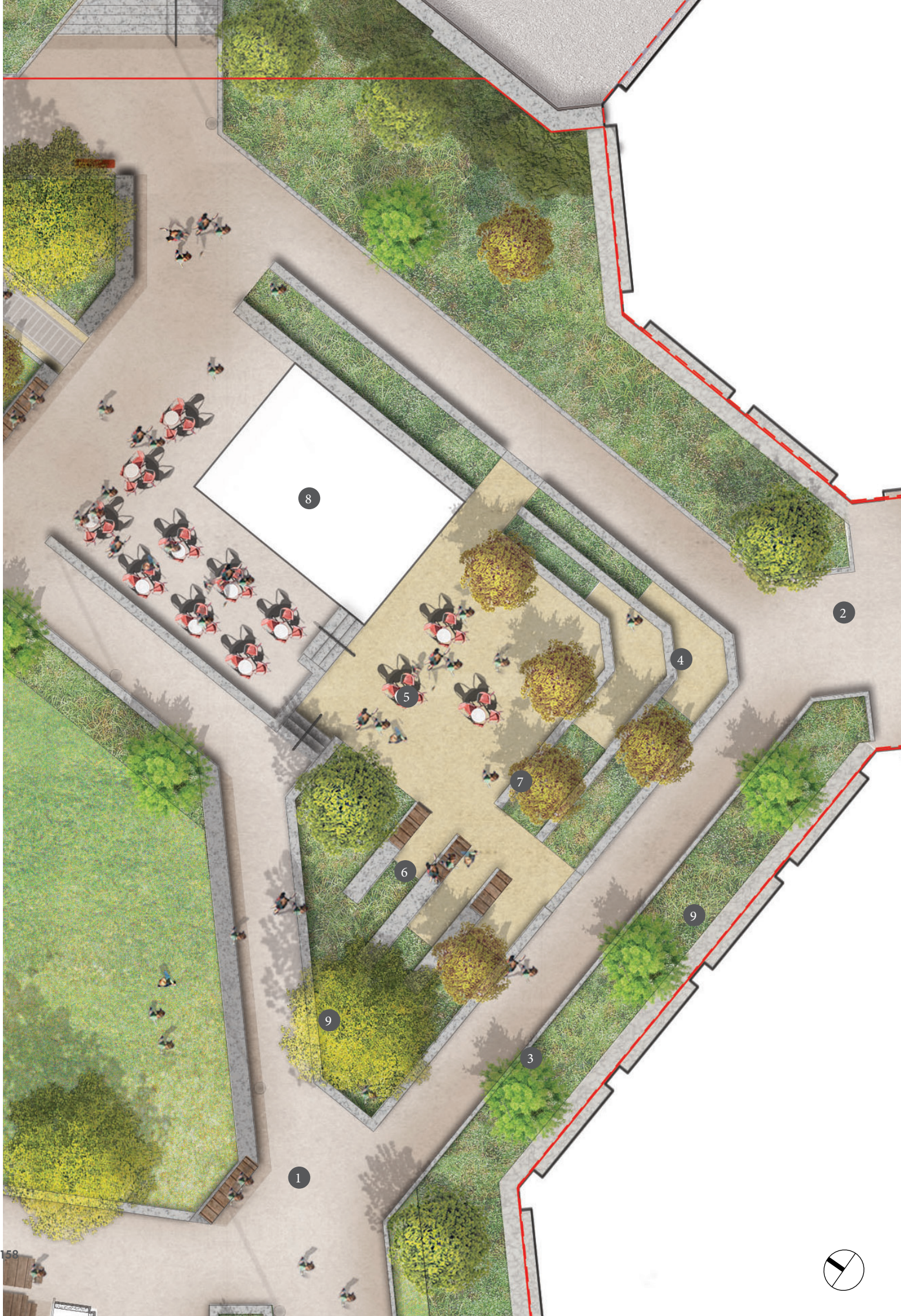
8.13 BIXTETH WALK

One of the key routes into the site, Bixteth Walk creates a positive pedestrian connection to the Exchange Building from the street. New tree planting and mixed ornamental shrub planting lines the route drawing the character of the park and gardens down to Bixteth street, extending its impact onto the surrounding streets.

- 8.13.1 The pedestrian path takes into account the change in level with a gentle gradient and provides step free access to the terraces and park beyond.
- 8.13.2 A series of south facing spillout terraces line the edge of Building A responding to the buildings internal changes in level whilst offering an generous external space for the ground floor restaurant to utilise.
- 8.13.3 A generous buffer of soft landscaping creates a threshold between the Exchange building and the main public route. However this has been removed at the corner of Bixteth Street and replaced with a level terrace to provide opportunity for a more active ground floor use on the corner of this site and further animate the street.



Illustrative section of seating terrace and main pedestrian route



8

2

4

5

7

6

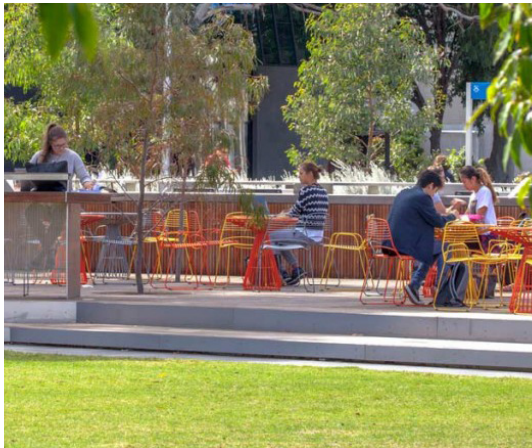
9

9

3

1





Stepped seating terrace with planting

KEY:

1. Accessible footpath linking from Bixteth Street into the park 3.5 - 4.0m
2. Entrance route to the Exchange Building
3. Planted verge with multi stemmed tree planting
4. Stepped planting terrace for informal seating
5. Seating terrace/ event space
6. Plinth seating elements
7. Ornamental tree planting with spring and autumn interest
8. Future pavillion position with surrounding cafe spillout space
9. Feature anchor tree picking up key sightlines from Bixteth Street

8.14 TERRACED GARDENS

Linking directly from the Exchange Station building the terraced gardens harness the change in level into the heart of the park creating a positive outlook for the office building, culminating in the pavilion at the top terrace. These gentle terraces enable a series of informal seating edges sat within a garden setting.

- 8.13.1 Mixed ornamental shrub planting with stepped edges. Large percentage of evergreen species with mixed herbaceous emergent species which create year round interest for the gardens.
- 8.13.2 Multi-stemmed tree planting with spring blossom and good autumn colour are scattered through the terraces.
- 8.13.3 Opportunity for use as a small scale event space
- 8.13.4 Level footpaths enable step free access into the terraced garden space.
- 8.13.5 The pavilion sits adjacent to one of the primary routes across the park and benefits from both south and west facing seating terraces, both fully accessible. The southern terrace sits 300mm below the western terrace due to the changes in level across the site.



Illustrative section of seating terrace and main pedestrian route