

rice house st vincent's school liverpool

Hardwood vertical sliding box sash windows to match existing & ironmongery.

internal

external

proposed head detail

scale 1:2

- Insulated Plasterboard
on trsw battens & dpc
- Existing External Wall
- Internal Timber Linings - Casing/Architrave
- DPC
- External Timber Linings - with mastic
Parting Bead
- Top Rail of Top Sash
- Putty
- 4mm Glass

meeting rails detail

scale 1:2

- Putty and 4mm Glass
- Meeting Rail

glazing bar detail

scale 1:2

proposed cill detail

scale 1:2

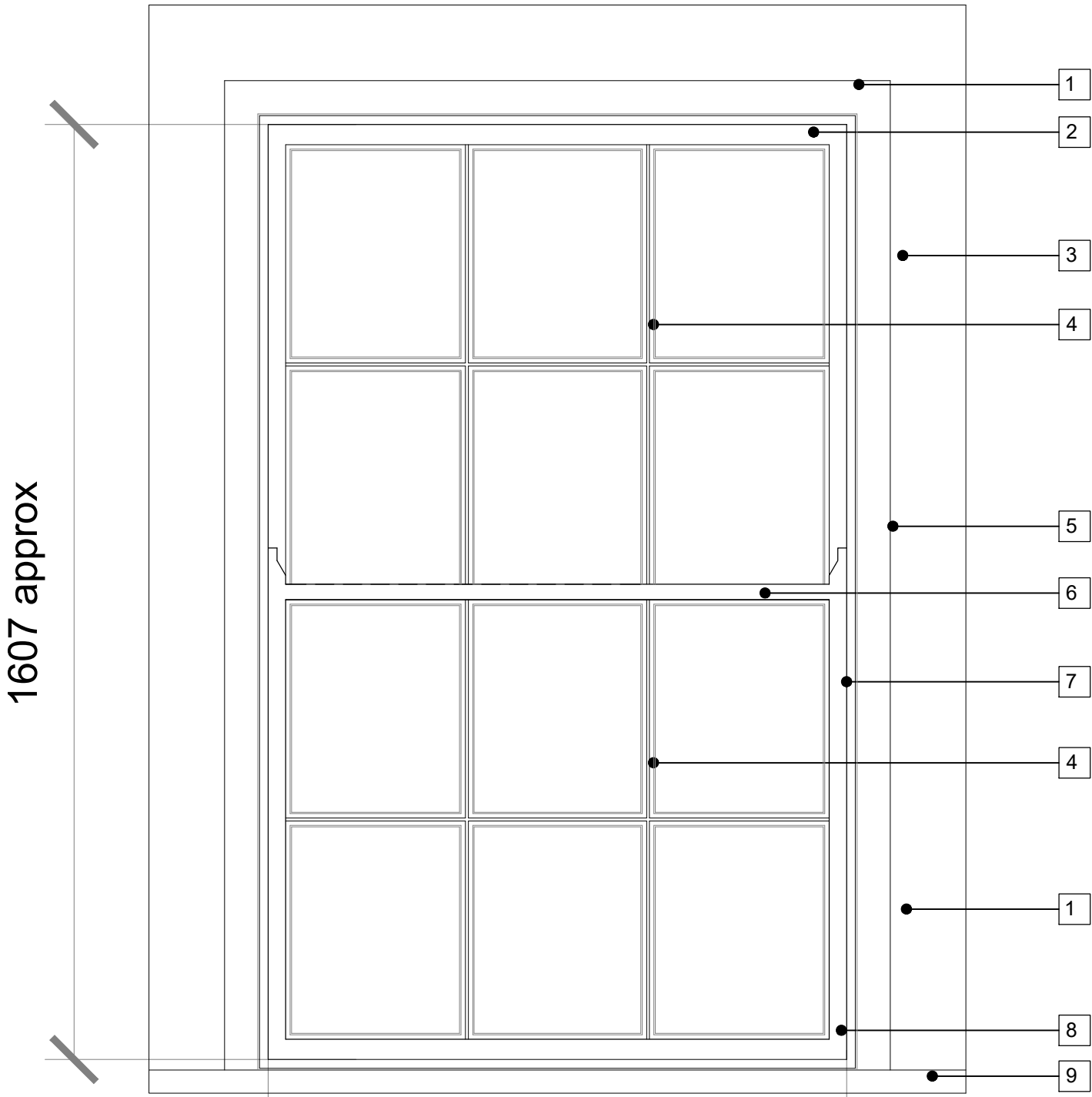
- Putty and 4mm Glass
- Bottom Rail of Bottom Sash
- Cill
- Top of internal timber cill
- Mastic
- Insulated Plasterboard
on trsw battens & dpc
- External Painted Stone cill
- DPC
- Existing External Wall

existing sash window

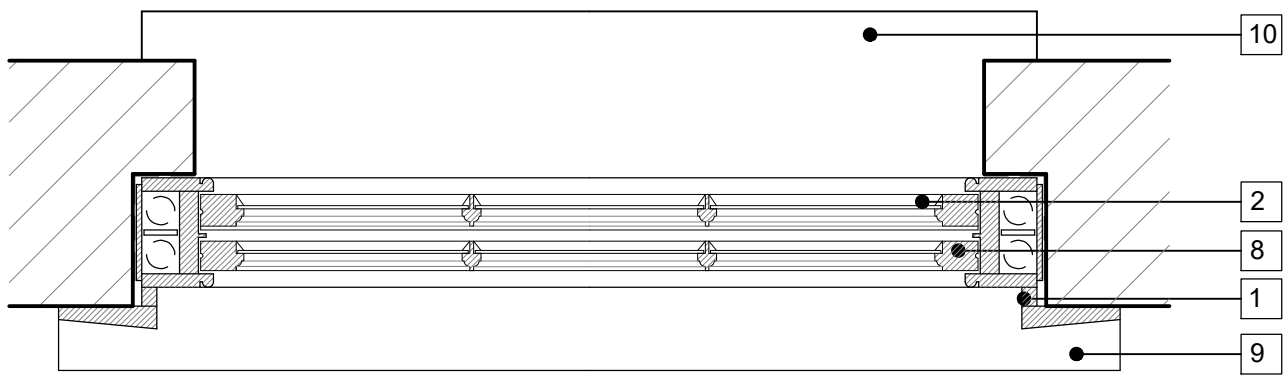
Internal view of existing sash window - scale 1:10

Vertical double-hung box framed sliding sash [c 1750 - 1850]

All existing windows to be removed - replace with hardwood sash windows to match existing.

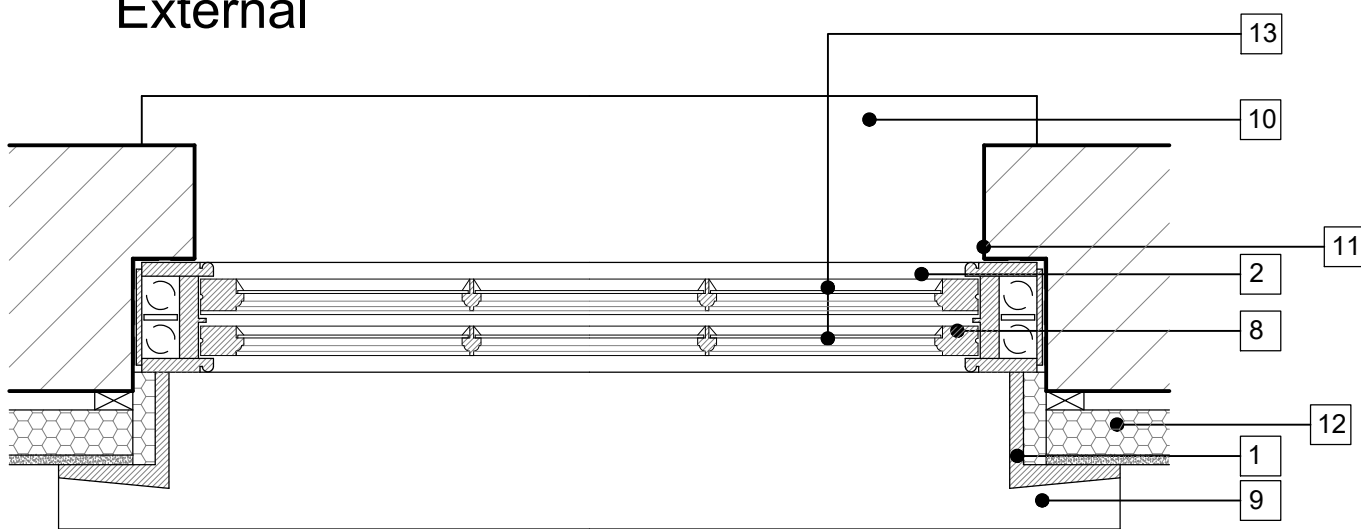


External 994 approx



proposed sash window -
with internal insulation

External



Internal
Key of Components [match as existing]

- 1 Internal Timber Linings - Casing/Architrave
- 2 Top Rail of Top Sash
- 3 Sash cord/Weight pockets.
- 4 Glazing Bar - vertical/horizontal divides the
Stiles and Rails - six over six panes
- 5 Pulley Wheel/Window lock.
- 6 Meeting Rail
- 7 Stile - restored
- 8 Bottom Rail of Bottom Sash
- 9 Top of timber cill
- 10 External Painted Stone cill
- 11 DPC
- 12 Insulated Plasterboard
on trsw battens & dpc
- 13 4mm Glass

GENERAL NOTES
DIMENSIONS MUST NOT BE SCALED. ALL
DIMENSIONS IN MILLIMETRES - SHOULD BE
VERIFIED ON SITE.
ARCHITECT NOTIFIED IN WRITING OF ANY
DISCREPANCIES.

St Vincent's School Liverpool

Elevations
New windows to match existing

Drwg No: WA 42 - 16 Rev : -
Date: May 2016 Scale: 1:10,1:2 @ A1 Checked by : jg

williams architecture
106 Timber Wharf Worsley Street Manchester M15 4LR