

General Notes

All site dimensions shall be verified by the Contractor on site prior to commencing any works.

Do not scale from this drawing.

Only work to written dimensions.

This drawing is the property of Fletcher-Rae (UK) Limited (t/a Fletcher-Rae) and copyright is reserved by them. The drawing is not to be copied or disclosed by or to any unauthorised persons without the prior written consent of Fletcher-Rae (UK) Limited.

PLANNING

Legend

1 Bed

2 Bed

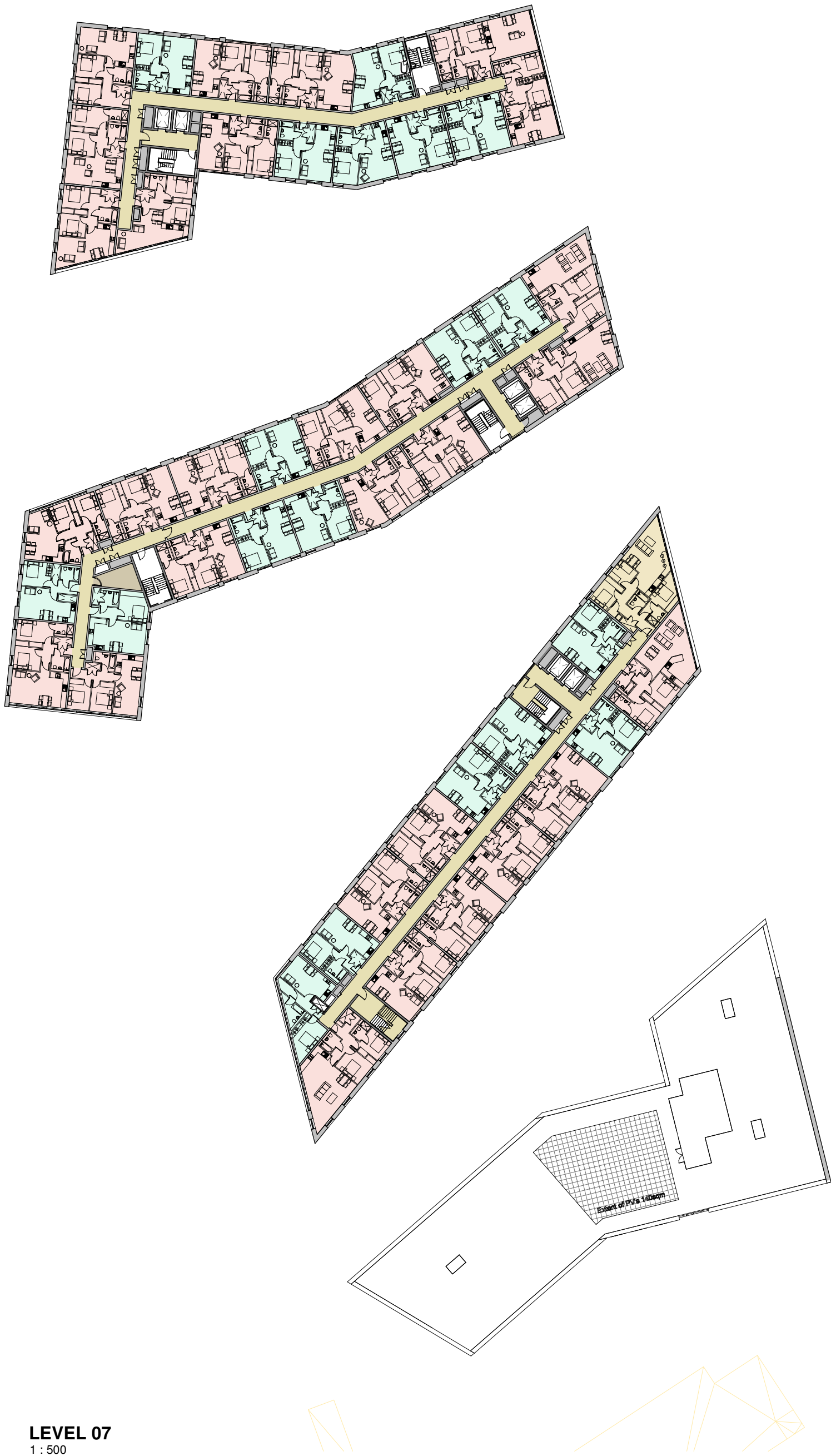
3 Bed

Circualtion

Anciliary

Plant

Retail



LEVEL 07  
1 : 500



LEVEL 08  
1 : 500

|   |  |          |
|---|--|----------|
| 3 | Further changes to tree layout and other wind mitigation measures following consultant input   | 20190911 |
| 2 | Changes to landscaping including wind mitigation measures following planning meeting and consultant feedback   | 20190709 |
| 1 | Changes to scheme following consultation feedback. Reduction to timber terracing at ground floor public realm between building 2 and 3. Reduction of height and change to fence type (see landscaping plan). Extra windows added to various parts of each building. External cladding to roof plant space changed to metallic rainscreen, to match upper portion of each building. | 20190517 |

Revision:

|            |              |    |
|------------|--------------|----|
| Scale      | As indicated | A1 |
| Status     | Planning     |    |
| Drawn By   | Author       |    |
| Checked By | Checker      |    |
| Date       | 11/21/17     |    |

Client:  
**Maro Developments**  
Project:  
**Brunswick Quay**

Sheet Name:  
**Level 07 and Level 08**

|                 |            |           |   |
|-----------------|------------|-----------|---|
| Drawing Number: | 16047_PL05 | Revision: | 3 |
|-----------------|------------|-----------|---|

fletcher|rae  
Architects | Master Planners | Designers

Hill Quays, 5 Jordan Street, Manchester, M15 4PY

t +44 (0) 161 242 1140  
f +44 (0) 161 242 1141  
w www.fletcher-rae.com  
e info@fletcher-rae.com

