

5.0 APPEARANCE

5.1 Precedent – Historic, Current and Proposed

The following images illustrate the material palette used historically in the area, along with more recent additions, all of which have contributed stimulus to the design process for the proposals.



Material reference: industrial history

Existing Context Palette

stone



timber



sandstone

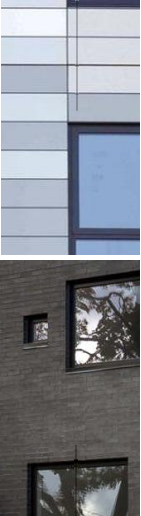


iron

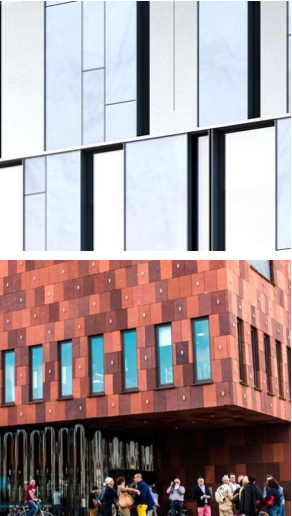
brick

Proposed Palette

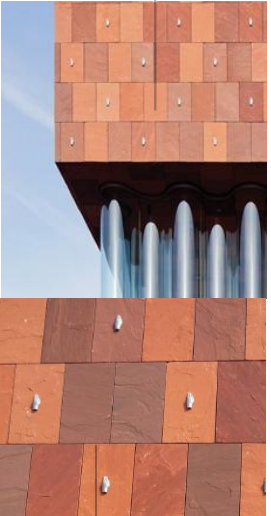
Metal



Glass



Stone



black brick

stone

stone

5.0 APPEARANCE

5.2 Materials

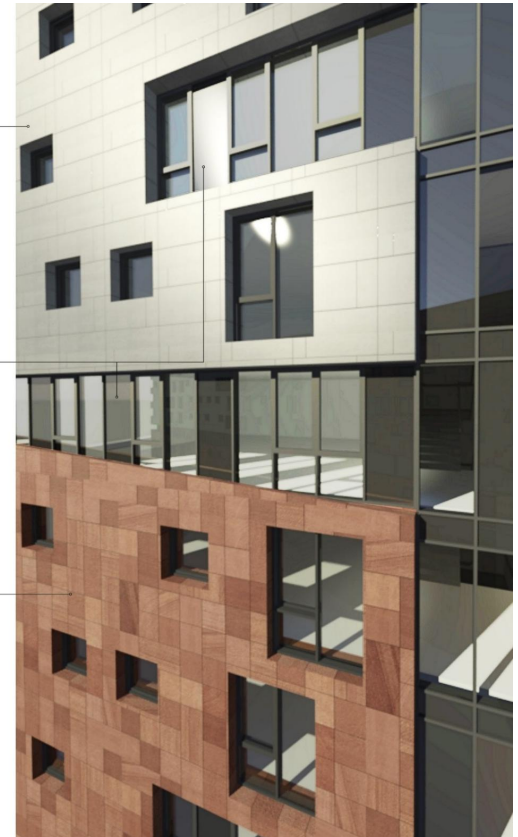
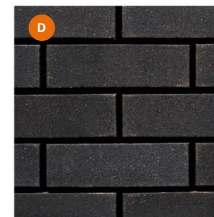
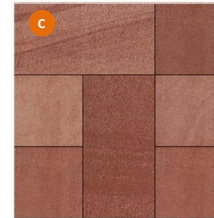
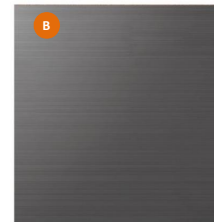
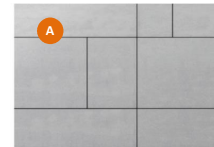
The proposed materials align with the following images:

- A** LID_metal rainscreen cladding
- B** CENTRAL BAND_glazing and metallic spandrels
- C** BODY_stone panel cladding
- D** PLINTH_black brick



fletcher | rae

The proposed materials have been chosen to complement those in the current context. Particular interest has been given to how the scheme will appear in conjunction with the Liverpool Anglican Cathedral (pink sandstone building)



5.0 APPEARANCE

5.3 Perspective Elevations_NORTH & SOUTH

The following images illustrate the final proposed material palette.



5.0 APPEARANCE

5.4 3D View from Coburg Bridge

The following image illustrate the final proposed material palette in context.

Recently consented scheme_Brunswick Way / Summers Road



5.0 APPEARANCE

5.5 Perspective Elevations_EAST & WEST

The following images illustrate the final proposed material palette

East Elevation Perspective



West Elevation Perspective



5.0 APPEARANCE

5.6 3D View From the River Mersey

The following image illustrate the final proposed material palette in context.

Under construction_X1 the Quarter

Recently consented scheme_Brunswick Way / Summers Road



5.0 APPEARANCE

5.4 3D View From the Anchorage

The following image illustrate the final proposed material palette in context.



5.0 APPEARANCE

5.4 3D View From the Riverside Edge

The following image illustrate the final proposed material palette in context.



6.0 THE BUILDING DESIGN

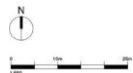
6.1 Scheme Drawings - Plans



Ground Floor



Mezzanine



General Notes

All site dimensions shall be verified by the Contractor on site prior to commencing any works.

Do not scale from this drawing.

Only work to written dimensions.

This drawing is the property of Fletcher-Rae (UK) Limited (UK) and copyright is reserved by them. The drawing is not to be copied or disclosed by or to any unauthorised persons without the prior written consent of Fletcher-Rae (UK) Limited.

PLANNING

Legend

1 Bed
2 Bed
3 Bed
Circulation
Amklay
Plant
Retail

Works shown on land outside Applicant's ownership subject to agreement with third party. If such agreement cannot be reached, the extent of works will need to be adjusted to reflect Applicant's ownership.

Revision:

Scale	As indicated @ A1
Status	Planning
Drawn By	Author
Checked By	Checker
Date	04/23/15

Client:

Maro Developments
Brunswick Quay

Sheet Name:

Level 00 and MEZZANINE

Drawing Number:

10047_PL01

Revision:

fletcher | rae

Architects | Master Planners | Designers
Hill Quay, 5 Jordan Street, Manchester, M15 4PY

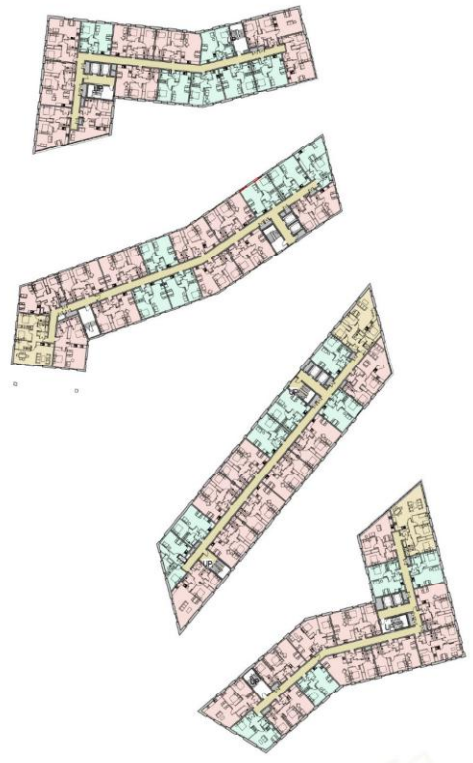
T: +44 (0) 161 242 1140
F: +44 (0) 161 242 1141
W: www.fletcher-rae.com
E: info@fletcher-rae.com

6.0 THE BUILDING DESIGN

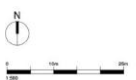
6.1 Scheme Drawings - Plans



Level 01



Level 02



General Notes

All site dimensions shall be verified by the Contractor on site prior to commencing any works.

Do not scale from this drawing.

Only work to written dimensions.

This drawing is the property of Fletcher-Rae (UK) Limited (U/a Fletcher-Rae) and copyright is reserved by them. The drawing is not to be copied or disclosed by or to any unauthorised persons without the prior written consent of Fletcher-Rae (UK) Limited.

PLANNING

Legend

- 1 Bed
- 2 Bed
- 3 Bed
- Circulation
- Ancillary
- Plant
- Retail

Works shown on land outside Applicant's ownership subject to agreement with third party. If such agreement cannot be reached, the extent of works will need to be adjusted to reflect Applicant's ownership.

Revision:

Scale	As indicated @ A1
Status	Planning
Drawn By	Author
Checked By	Checker
Date	05/10/17

Client:

Maro Developments

Project:

Brunswick Quay

Sheet Name:

Level 01 and Level 02

Drawing Number:

10047_PL02

fletcher | rae

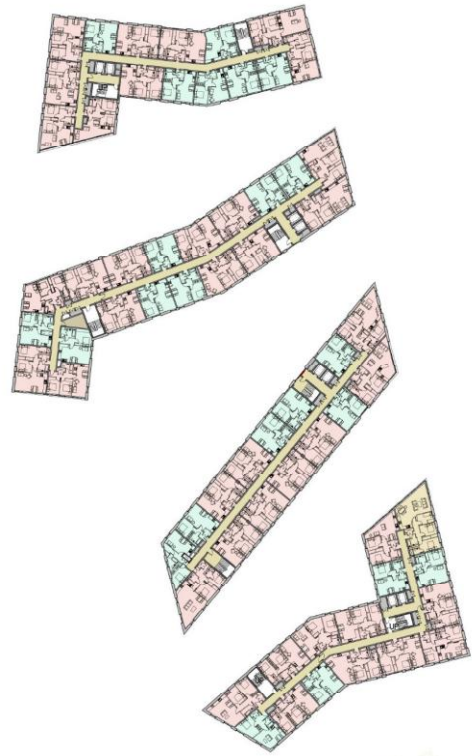
Architects | Master Planners | Designers

Hill Quay, 5 Jordan Street, Manchester, M15 4PY

T: +44 (0) 161 242 1140
F: +44 (0) 161 242 1141
W: www.fletcher-rae.com
E: info@fletcher-rae.com

6.0 THE BUILDING DESIGN

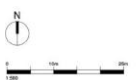
6.1 Scheme Drawings - Plans



Level 03



Level 04



General Notes

All site dimensions shall be verified by the Contractor on site prior to commencing any works.

Do not scale from this drawing.

Only work to written dimensions.

This drawing is the property of Fletcher-Rae (UK) Limited (U/a Fletcher-Rae) and copyright is reserved by them. The drawing is not to be copied or disclosed by or to any unauthorised persons without the prior written consent of Fletcher-Rae (UK) Limited.

PLANNING

Legend

- 1 Bed
- 2 Bed
- 3 Bed
- Circulation
- Ancillary
- Plant
- Retail

Revision:

Scale	As indicated @ A1
Status	Planning
Drawn By	Author
Checked By	Checker
Date	05/10/17

Client:

Maro Developments

Brunswick Quay

Sheet Name:

Level 03 and Level 04

Drawing Number:

10047_PL03

fletcher | rae

Architects | Master Planners | Designers

Hill Quay, 5 Jordan Street, Manchester, M15 4PY

T: +44 (0) 161 242 1140
F: +44 (0) 161 242 1141
W: www.fletcher-rae.com
E: info@fletcher-rae.com

6.0 THE BUILDING DESIGN

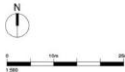
6.1 Scheme Drawings - Plans



Level 05



Level 06



General Notes

All site dimensions shall be verified by the Contractor on site prior to commencing any works.

Do not scale from this drawing.

Only work to written dimensions.

This drawing is the property of Fletcher-Rae (UK) Limited (U.K. Fletcher-Rae) and copyright is reserved by them. The drawing is not to be copied or disclosed by or to any unauthorised persons without the prior written consent of Fletcher-Rae (UK) Limited.

PLANNING

Legend

1 Bed
2 Bed
3 Bed
Circulation
Ancillary
Plant
Retail

Revision:

Scale	As indicated @ A1
Status	Planning
Drawn By	Author
Checked By	Checker
Date	11/12/17

Client:

Maro Developments

Brunswick Quay

Sheet Name:

Level 05 and Level 06

Drawing Number:

10047_PL04

fletcher | rae

Architects | Master Planners | Designers

Hill Quay, 5 Jordan Street, Manchester, M15 4PY

T: +44 (0) 161 242 1140
F: +44 (0) 161 242 1141
W: www.fletcher-rae.com
E: info@fletcher-rae.com

6.0 THE BUILDING DESIGN

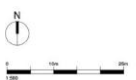
6.1 Scheme Drawings - Plans



Level 07



Level 08



General Notes

All site dimensions shall be verified by the Contractor on site prior to commencing any works.

Do not scale from this drawing.

Only work to written dimensions.

This drawing is the property of Fletcher-Rae (UK) Limited (U/a Fletcher-Rae) and copyright is reserved by them. The drawing is not to be copied or disclosed by or to any unauthorised persons without the prior written consent of Fletcher-Rae (UK) Limited.

PLANNING

Legend

- 1 Bed
- 2 Bed
- 3 Bed
- Circulation
- Ancillary
- Plant
- Retail

Revision:

Scale	As indicated @ A1
Status	Planning
Drawn By	Author
Checked By	Checker
Date	11/12/17

Client:

Maro Developments

Brunswick Quay

Sheet Name:

Level 07 and Level 08

Drawing Number:

10047_PL05

fletcher | rae

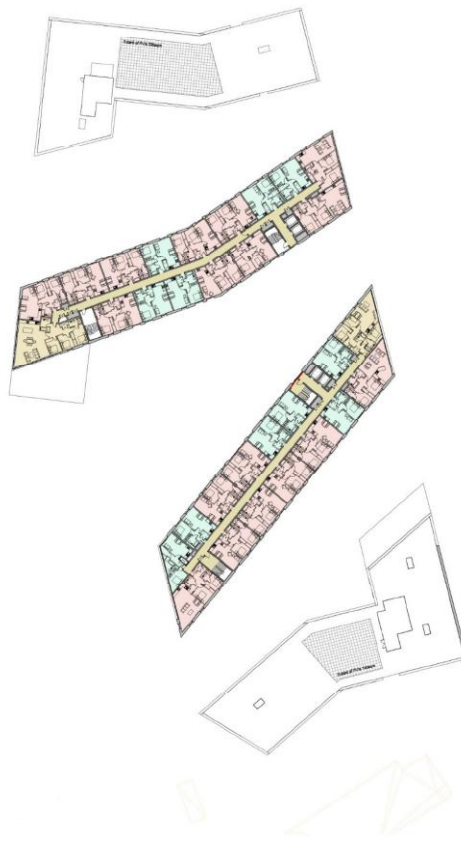
Architects | Master Planners | Designers

Hill Quay, 5 Jordan Street, Manchester, M15 4PY

T: +44 (0) 161 242 1140
F: +44 (0) 161 242 1141
W: www.fletcher-rae.com
E: info@fletcher-rae.com

6.0 THE BUILDING DESIGN

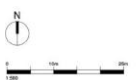
6.1 Scheme Drawings - Plans



Level 09



Level 10



General Notes

All site dimensions shall be verified by the Contractor on site prior to commencing any works.

Do not scale from this drawing.

Only work to written dimensions.

This drawing is the property of Fletcher-Rae (UK) Limited (U/a Fletcher-Rae) and copyright is reserved by them. The drawing is not to be copied or disclosed by or to any unauthorised persons without the prior written consent of Fletcher-Rae (UK) Limited.

PLANNING

Legend

- 1 Bed
- 2 Bed
- 3 Bed
- Circulation
- Ancillary
- Plant
- Retail

Revision:

Scale	As indicated @ A1
Status	Planning
Drawn By	Author
Checked By	Checker
Date	11/11/17

Client:

Maro Developments

Brunswick Quay

Sheet Name:

Level 09 and Level 10

Drawing Number:

10047_PL06

fletcher | rae

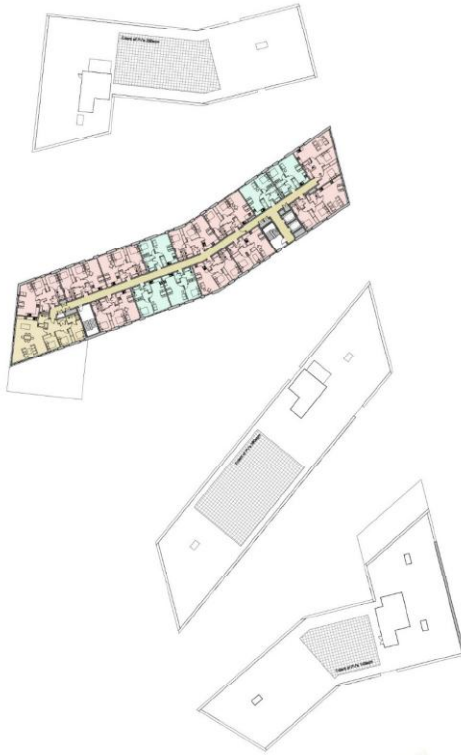
Architects | Master Planners | Designers

Hill Quay, 5 Jordan Street, Manchester, M11 4PY

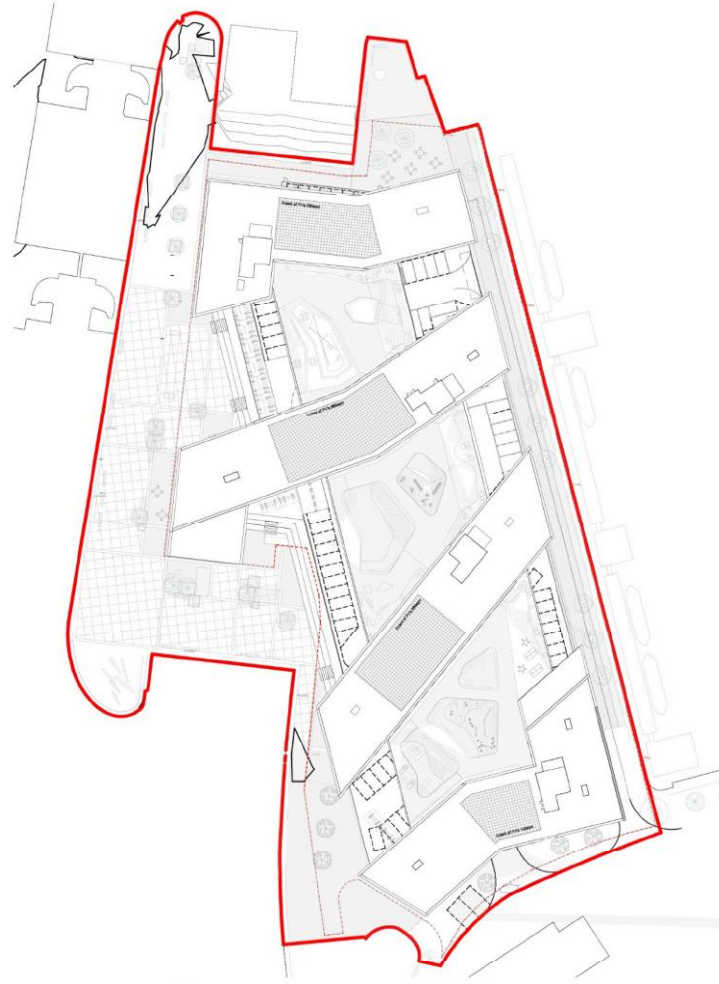
T: +44 (0) 161 242 1140
F: +44 (0) 161 242 1141
W: www.fletcher-rae.com
E: info@fletcher-rae.com

6.0 THE BUILDING DESIGN

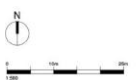
6.1 Scheme Drawings - Plans



Level 11



Roof



General Notes

All site dimensions shall be verified by the Contractor on site prior to commencing any works.

Do not scale from this drawing.

Only work to written dimensions.

This drawing is the property of Fletcher-Rae (UK) Limited (U/a Fletcher-Rae) and copyright is reserved by them. The drawing is not to be copied or disclosed by or to any unauthorised persons without the prior written consent of Fletcher-Rae (UK) Limited.

PLANNING

Legend

- 1 Bed
- 2 Bed
- 3 Bed
- Circulation
- Ancillary
- Plant
- Retail

Revision:

Scale	As indicated @ A1
Status	Planning
Drawn By	Author
Checked By	Checker
Date	11/11/17

Client:

Maro Developments

Project:

Brunswick Quay

Sheet Name:

Level 11 and Roof

Drawing Number:

10047_PL07

fletcher | rae

Architects | Master Planners | Designers

Hill Quay, 5 Jordan Street, Manchester, M11 4PY

T: +44 (0) 161 242 1140
F: +44 (0) 161 242 1141
W: www.fletcher-rae.com
E: info@fletcher-rae.com