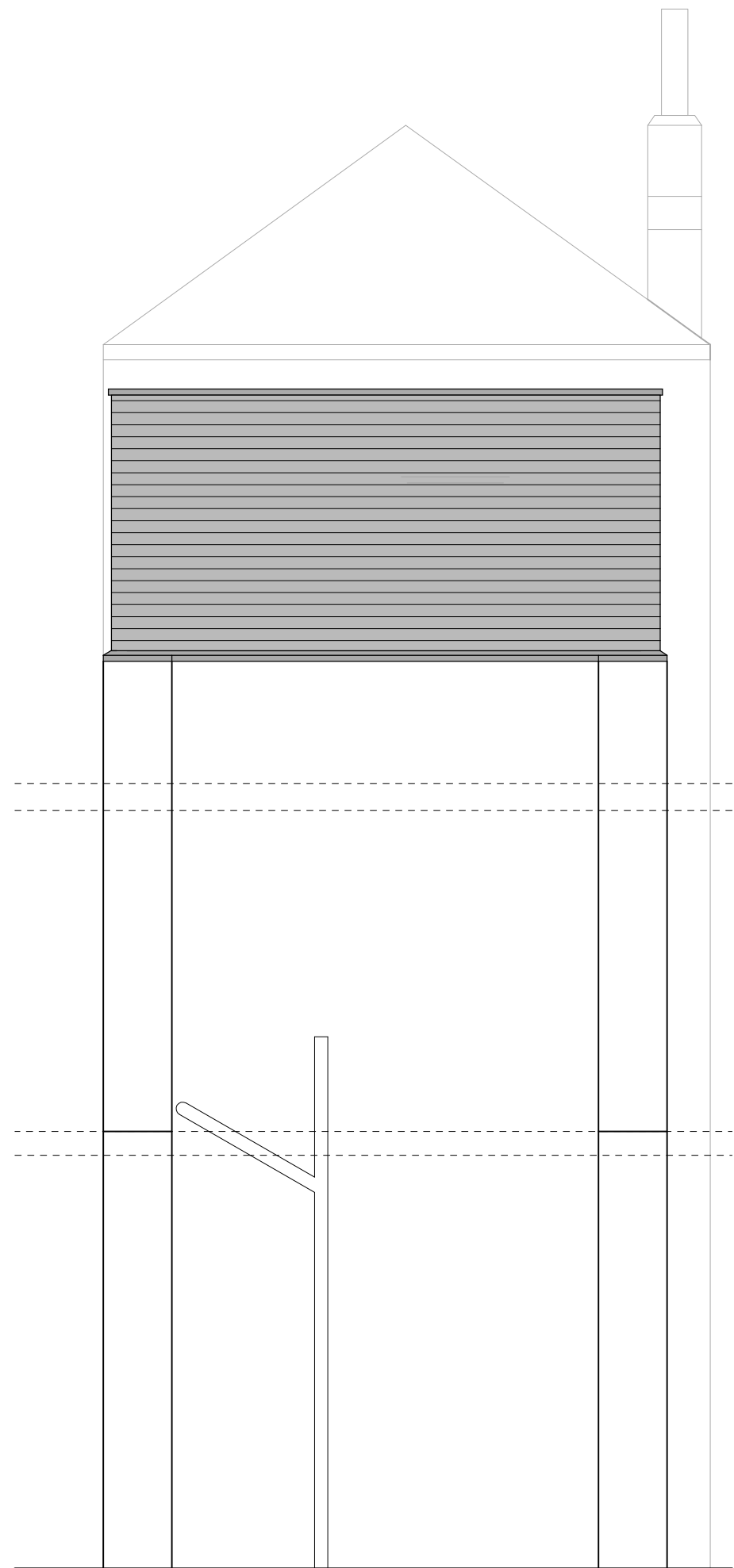


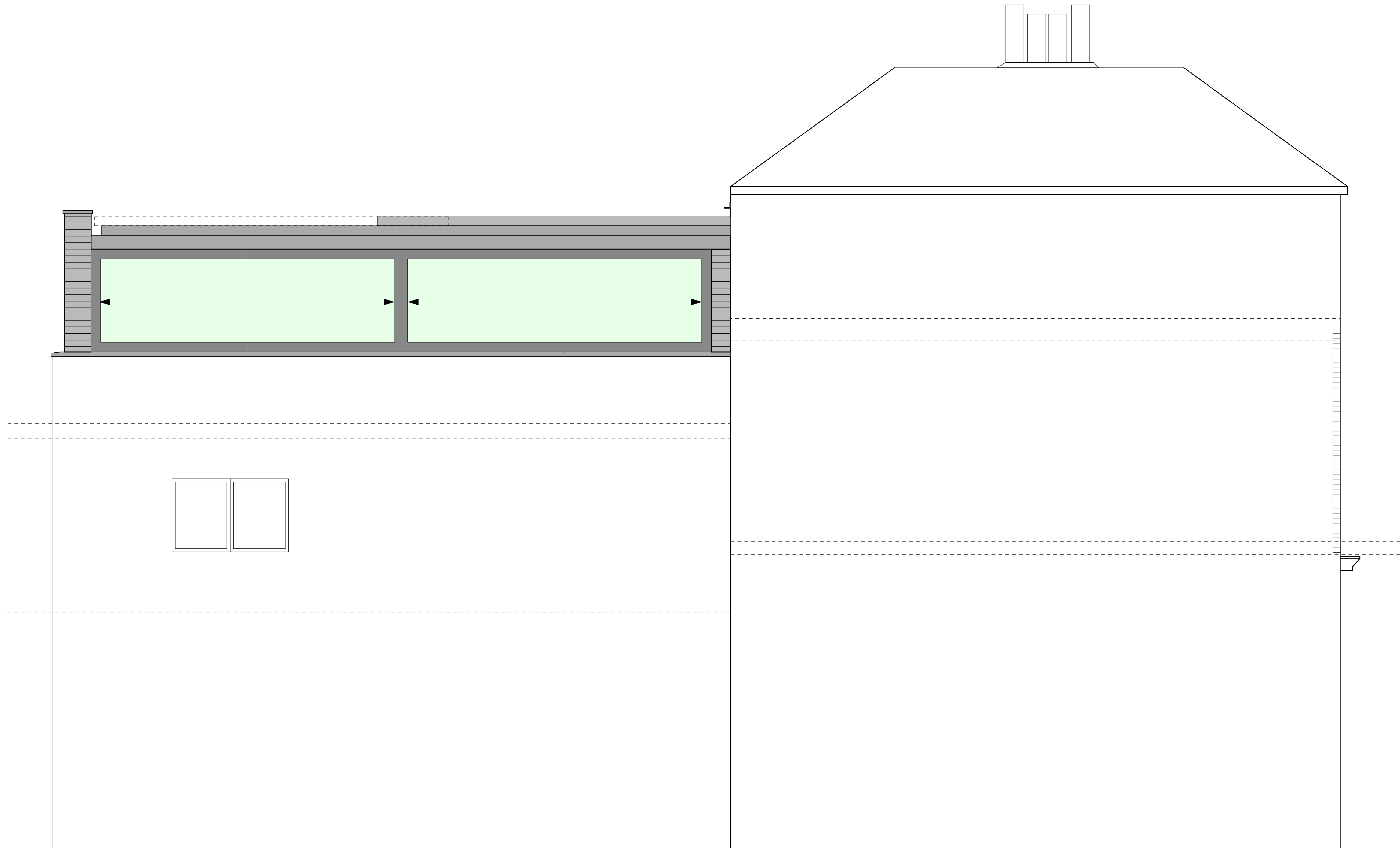
1 South Elevation
1:50 @ A1



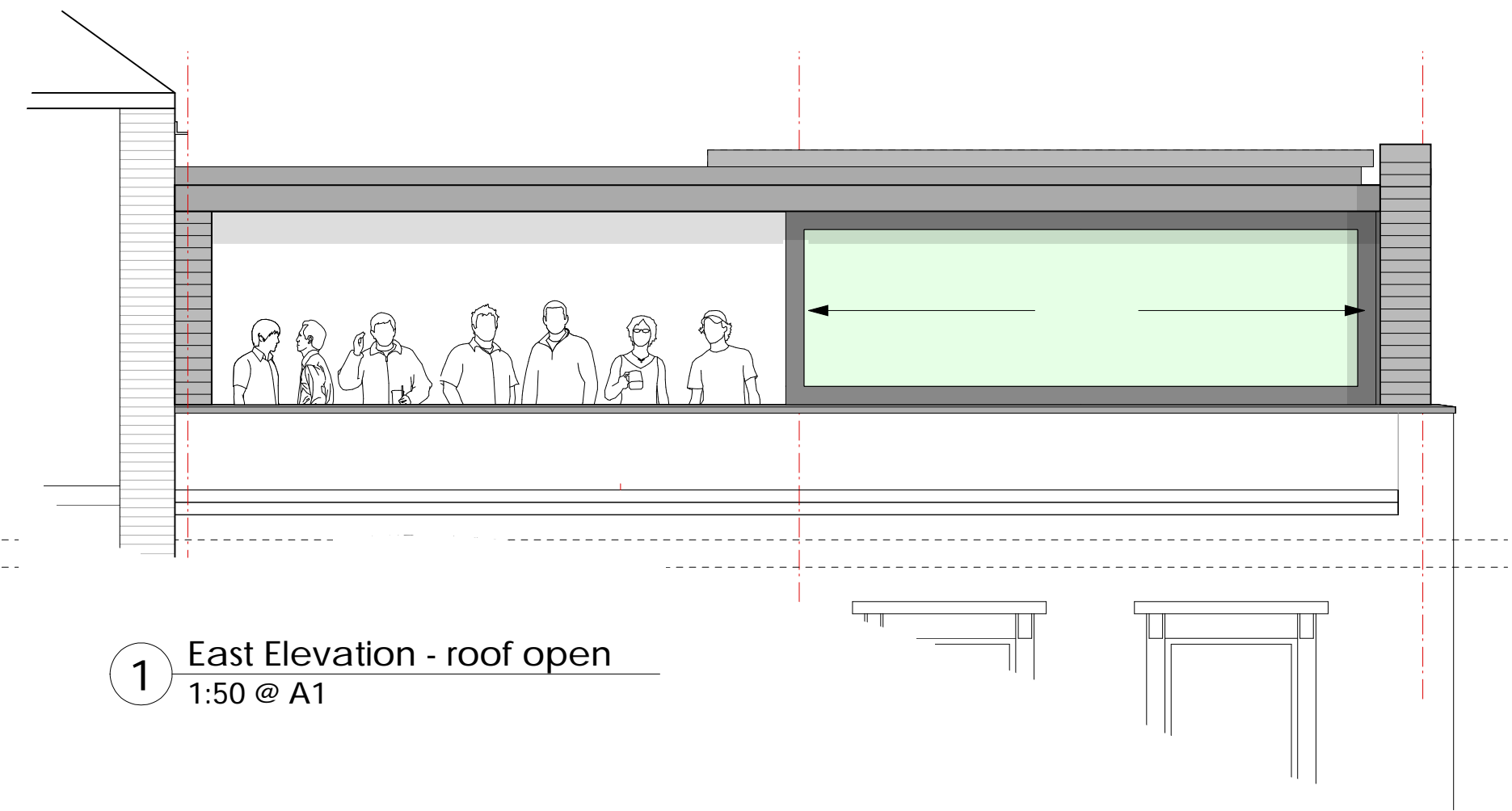
1 North Elevation
1:50 @ A1



1 East Elevation
1:50 @ A1



1 West Elevation
1:50 @ A1



1 East Elevation - roof open
1:50 @ A1

NOTES

- The drawing is copyright of Candy and Lofthouse Ltd. and may not be reproduced in any way without their specific permission.
- All dimensions are to be checked on site. Do not scale from this drawing. Work to agreed dimensions only. Any queries please contact the architect.
- MATERIALS PROHIBITED**
Materials prohibited from use, except where used in accordance with Good Practice in the selection of Construction Materials (March 2017) or where required by the Contract.
High strength concrete in the structural elements.
Wood used shall be permanent framework to concrete.
Cementitious materials for use in structural concrete.
Adhesives or adhesives containing products, as defined in the Contract of Adherence of Work Regulations, as amended 2004 or any other statutory modification or re-enactment thereof.
Any material containing or made from mineral fibres (for example, rock wool or slag wool) with a thickness of 1 inches or less, and a length of 200 inches or less, unless they are specifically stated to prevent migration of fibres.
Aggregates for use in reinforced concrete which do not comply with:
BS EN 12620:2002 properties of aggregates used in concrete.
BS EN 12620:2002 Properties of aggregates used in concrete.
BS EN 12620:2002 Part 1 & 2 properties of lightweight aggregates.
Guidance on avoiding alkal-silica reaction and limitations on alkali content in BS EN 12620:2002 & Concrete Society Technical Report No. 44 (1997).
Weak, weak grade or any other materials containing wood which may be degraded, treated or altered, except where treated with preservative and containing wood is specifically required in writing and approved by any relevant statutory requirement or where local building or other local codes specify any specifically permitted for in the Contract.
Use of thermally treated or materials which may release formaldehyde in quantities which may be hazardous with reference to the limit set by the Health and Safety Executive.
Carbon fibre or fibre.
Vitreous enamel or a substituted as being fibre-free. Carbon fibre or fibre or fibre.
Carbon or aggregate, asbestos and asbestos containing materials. Asbestos should also be made to the ECR 2011. Carbon and fibre.
Any new fibre based with particle board.
Any glass-based or glass-based fibre for building elements particularly susceptible to erosion.
Concrete used in construction where it is susceptible to alkali-silica reaction.
Materials containing chlorophenols (PCP).
Solvent based paints except where water based paints are available for consideration.
Any new materials not in accordance with relevant requirements, BS standards, Codes of Practice and good building practice in the state of occupation of the relevant materials into the Works or the specifications thereof.

- Issued for Planning 2016-06-12
- Revision 1: 15-16-151
- Preliminary
- For Approval
- Tender
- Construction
- CLT
- Iona Group
- Shenanigans Pub rooftop extension
- Proposed Elevations
- Scale: 1:50 @ A1
- Drawn by: AS
- Checked by: Jun 2016
- Revision: 15-16-151



T: 0151 207 4371 • F: 0151 207 7087